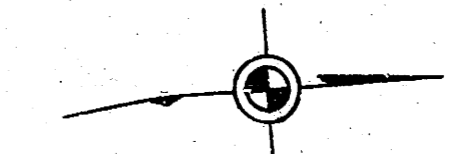


B. M. 132.19 City Std. 49' W. and 34' S. of School & Ridge.
 B. M. 132.046 "X" on N. end E. Headwall conc. culvert 150' S.
 of School St. W. on Ridge Road. (3220 set by others)

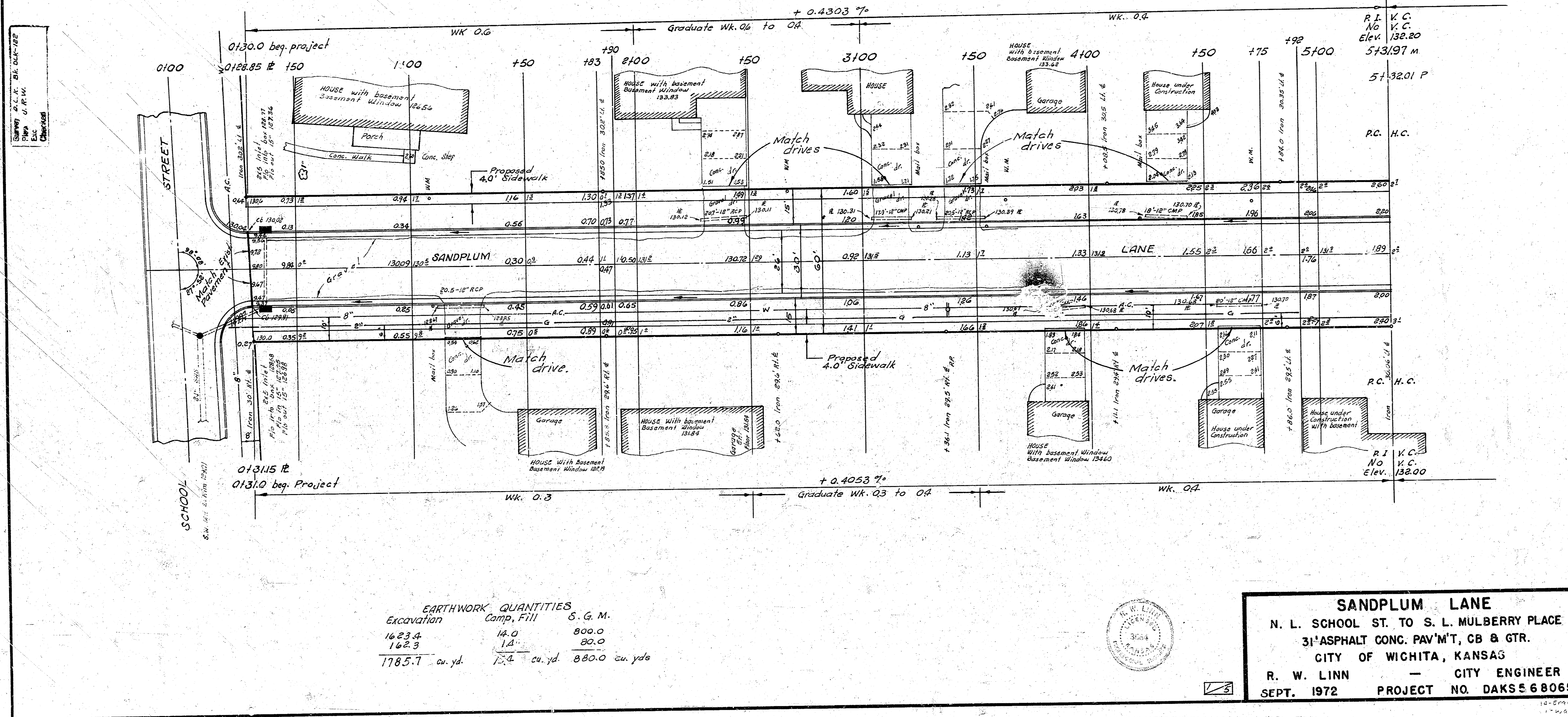
B. M. 130.002 "D" top N.-cb School St. East line
 Sandplum. (730.00 set by King DUK 119)
 B. M. 129.907 "M" in Mid Kansas N.-End N.E. return
 Sandplum of School. (29.89 set by others)

B. M. 133.127 S.E. cor. conc. porch 113 Sandplum.
 B. M. 147.029 S.W. cor. conc. Step W.-face House
 1206 Mulberry Place

± = ± St.



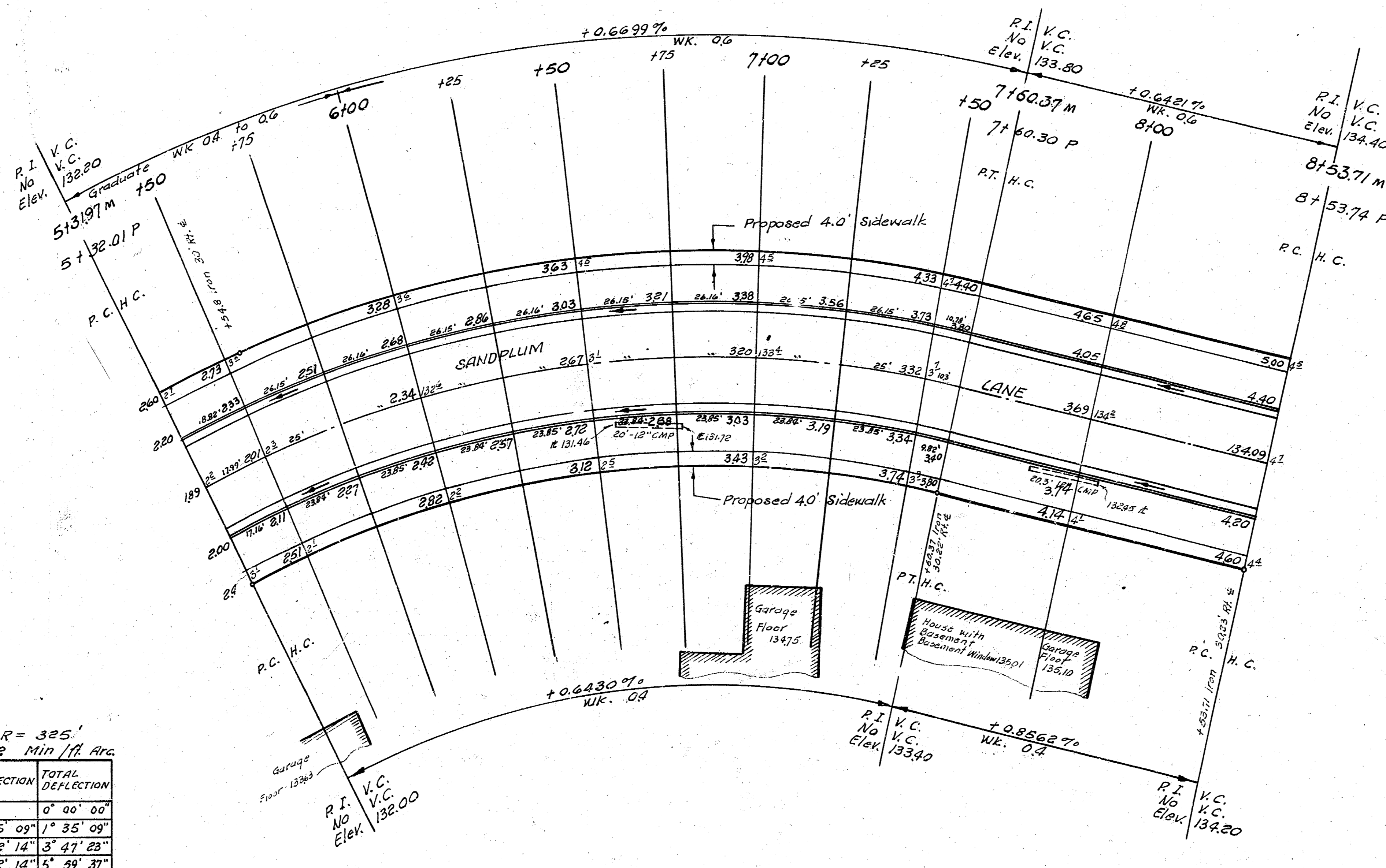
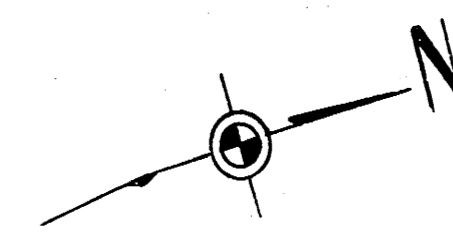
Scale 1" = 20'



EARTHWORK QUANTITIES		
Excavation	Comp. Fill	S. G. M.
1623.4	14.0	800.0
162.3	1.4	80.0
1785.7 cu. yd.	15.4 cu. yd.	880.0 cu. yds



SANDPLUM LANE
 N. L. SCHOOL ST. TO S. L. MULBERRY PLACE
 3" ASPHALT CONC. PAV'T, CB & GTR.
 CITY OF WICHITA, KANSAS
 R. W. LINN — CITY ENGINEER
 SEPT. 1972 PROJECT NO. DAKS 68065



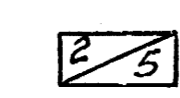
B. M. 142.026 R. R. Spk. W. face P. R. S.W. cor. 11th & Ridge. (142.19 Set by others)
 B. M. 133.533 N. Rim M. H. S.W. cor. School and Ridge. (133.65 Set by others)
 B. M. 132.20 60° Spk. E. side P-Pole S.W. cor. School and Ridge. (132.33 Set by others)

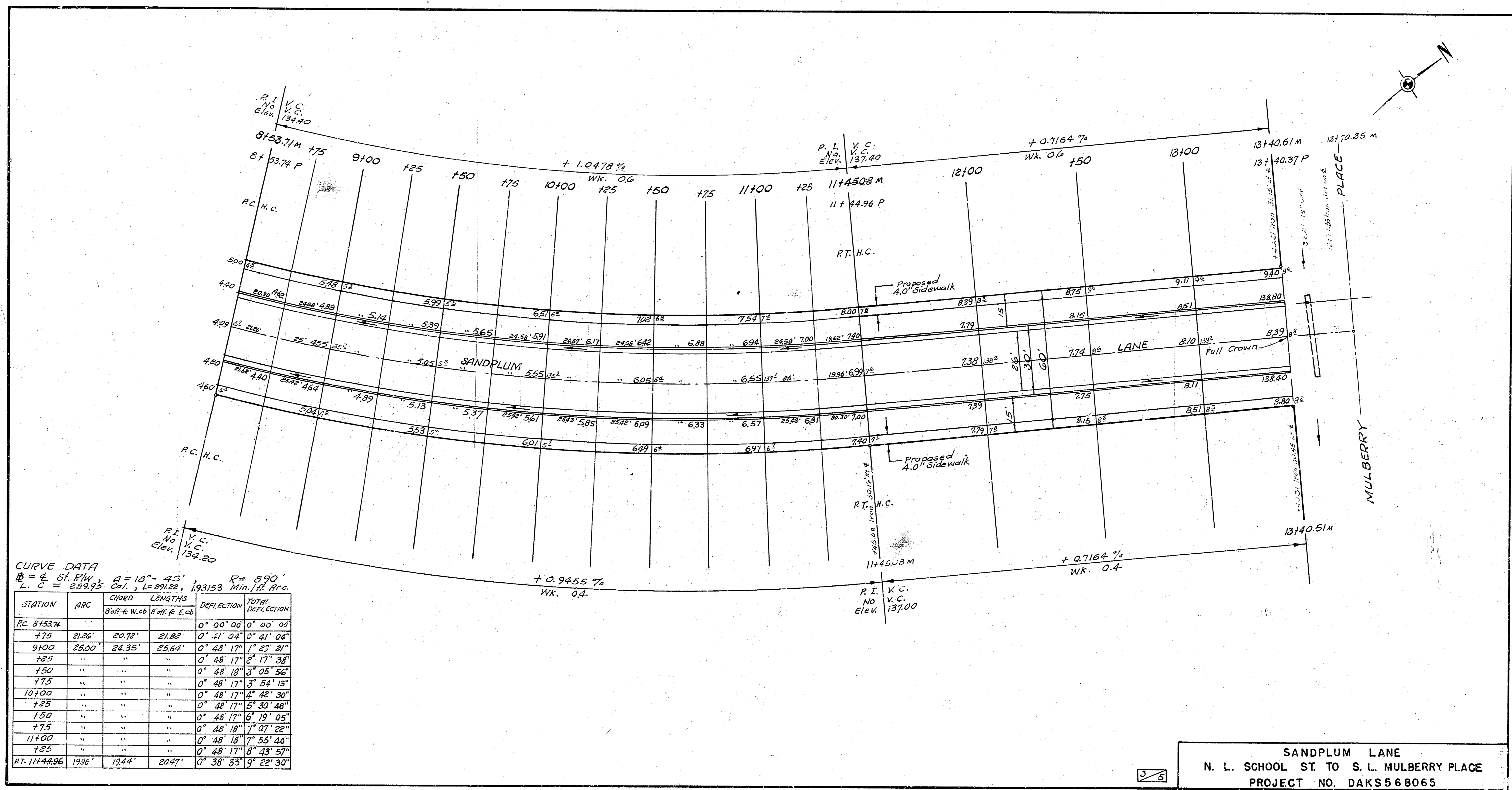
CURVE DATA

$B = E$ St. R/W, $\Delta = 40^\circ - 15''$ $R = 325'$
 $L C = 223.65$ cal., $L = 228.27'$, 5.28932 Min / ft. Arc

STATION	ARC	CHORD LENGTHS		DEFLECTION	TOTAL DEFLECTION
		B' W. S. W. C. B	B' W. R. E. C. B		
P.C. 513201					0° 00' 00"
150	17.99'	19.86'	16.71'	1° 35' 09"	1° 35' 09"
175	23.00'	24.07'	20.88'	2° 12' 14"	3° 47' 23"
6100	"	"	"	2° 12' 14"	5° 59' 37"
125	"	"	"	2° 12' 14"	8° 11' 51"
150	"	"	"	2° 12' 14"	10° 24' 05"
175	"	"	"	2° 12' 14"	12° 36' 19"
7100	"	"	"	2° 12' 14"	14° 48' 33"
125	"	"	"	2° 12' 14"	17° 00' 47"
150	"	"	"	2° 12' 14"	19° 13' 01"
P.T. 716230	10.30'	11.03'	9.57'	0° 54' 29"	20° 07' 30"

SANDPLUM LANE
 N. L. SCHOOL ST. TO S. L. MULBERRY PLACE
 PROJECT NO. DAKS5 68065





CURVE DATA
 B = E ST. P.W. $\Delta = 10^\circ - 45'$ $R = 890'$
 L. C. = 289.75 $\text{Chd. L} = 291.22$ $193153 \text{ Min. I.P. Arc.}$

STATION	ARC	CHORD	LENGTHS	DEFLECTION	TOTAL DEFLECTION
		B+H-E W.C.B	B+H-F E.C.B		
RC 8+53.71				0° 00' 00"	0° 00' 00"
775	21.26'	20.76'	21.82'	0° 31' 04"	0° 31' 04"
9+00	25.00'	24.35'	25.64'	0° 48' 17"	1° 22' 21"
9+25	"	"	"	0° 48' 17"	2° 10' 38"
9+50	"	"	"	0° 48' 18"	3° 05' 56"
9+75	"	"	"	0° 48' 17"	3° 54' 13"
10+00	"	"	"	0° 48' 17"	4° 42' 30"
10+25	"	"	"	0° 48' 17"	5° 30' 48"
10+50	"	"	"	0° 48' 17"	6° 19' 05"
10+75	"	"	"	0° 48' 18"	7° 07' 22"
11+00	"	"	"	0° 48' 18"	7° 55' 40"
11+25	"	"	"	0° 48' 17"	8° 43' 57"
RT 11+44.96	19.96'	19.44'	20.47'	0° 38' 33"	9° 22' 30"

SANDPLUM LANE
 N. L. SCHOOL ST. TO S. L. MULBERRY PLACE
 PROJECT NO. DAKS 568065