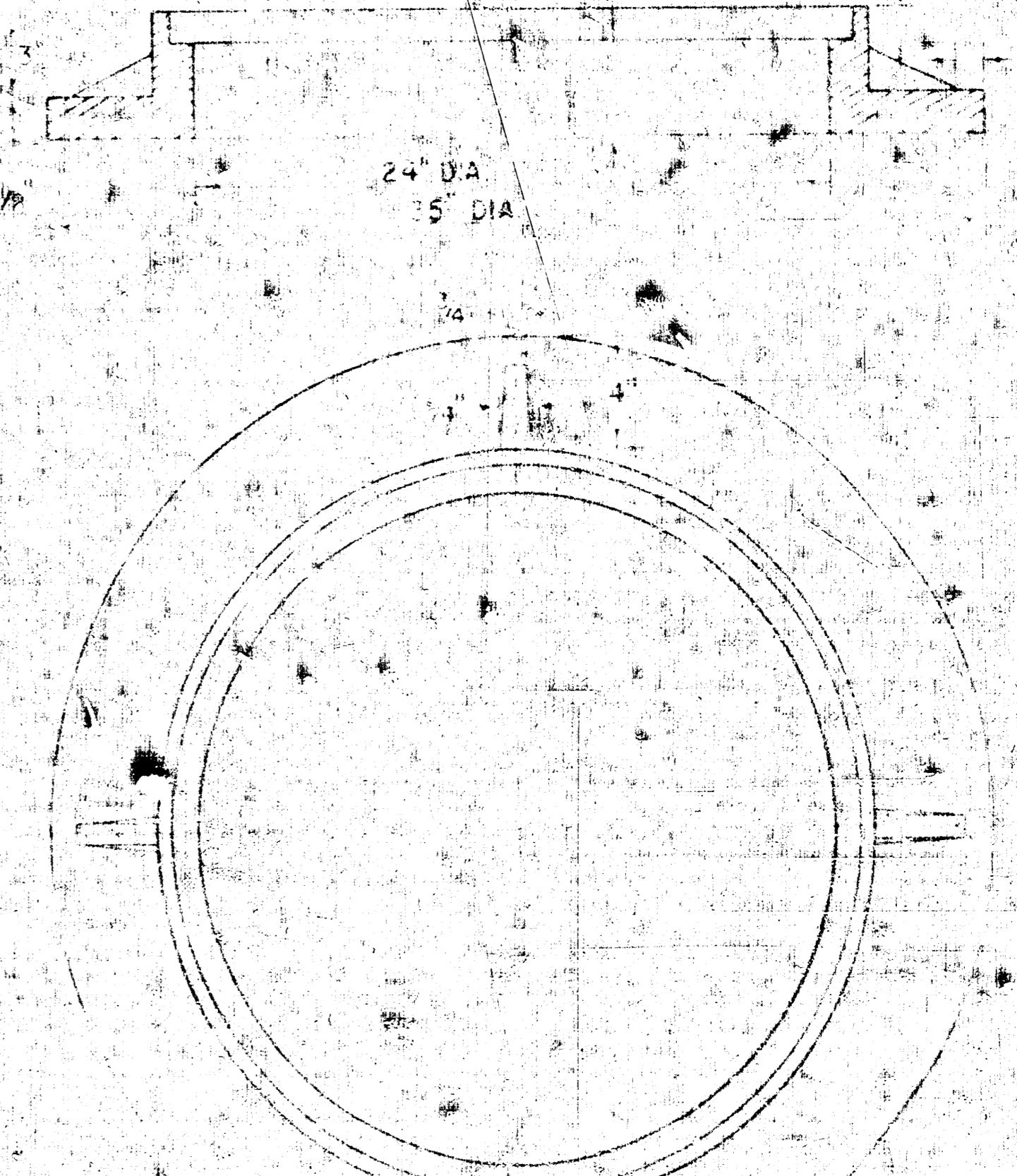
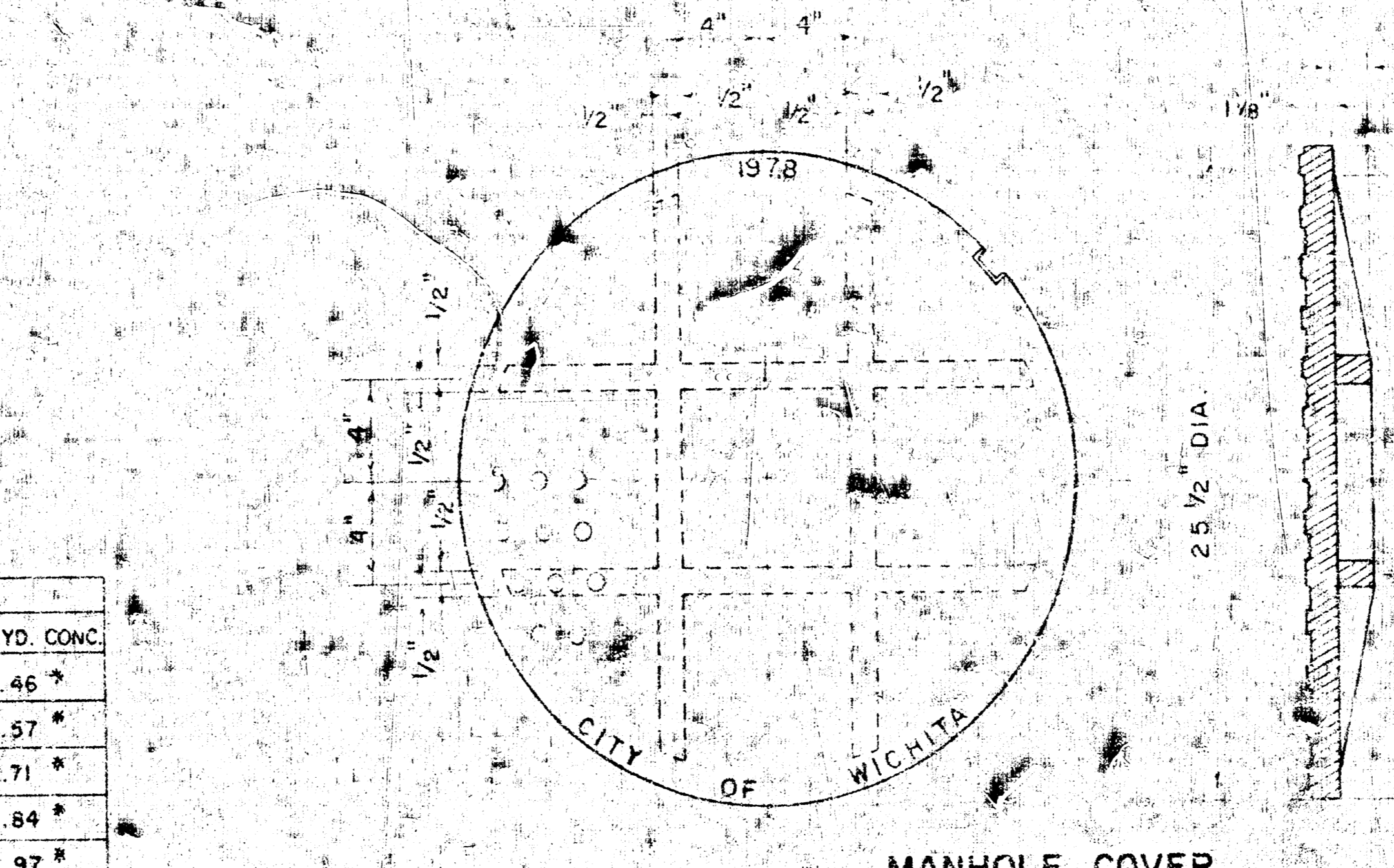
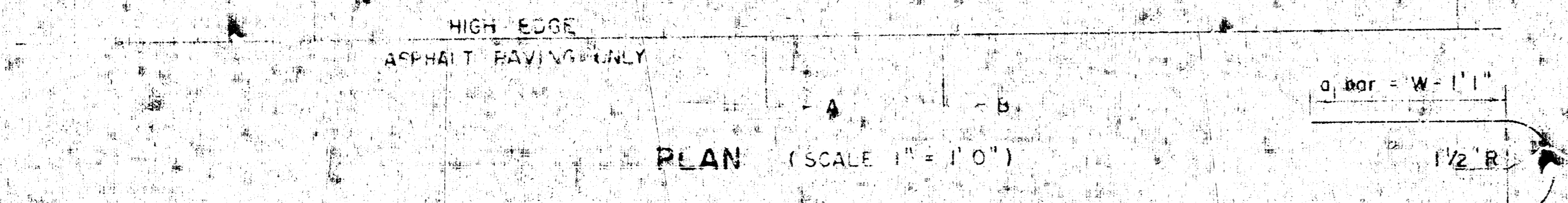
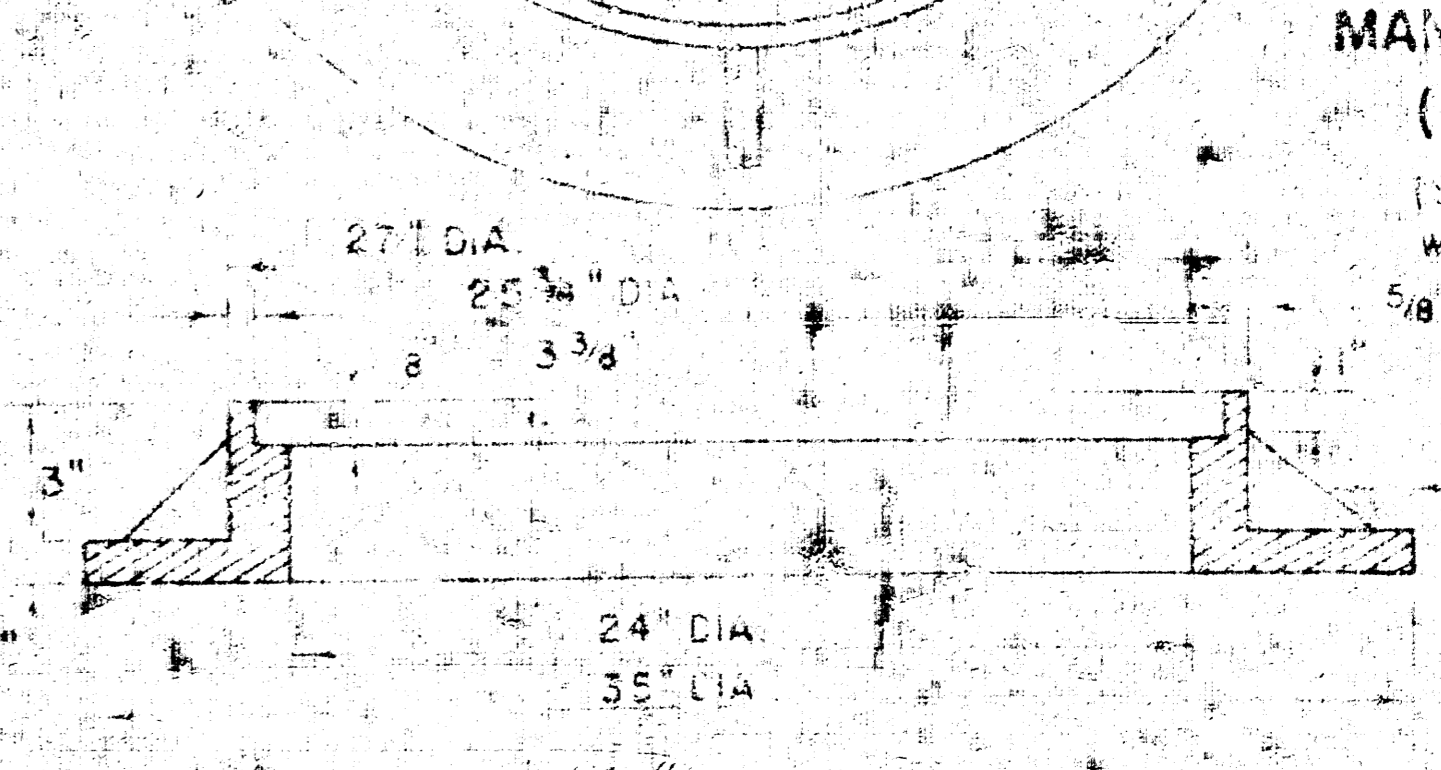


SECTION A-A  
(SCALE 1" = 1'0")

MANHOLE FRAME  
(SCALE 1" = 6")  
WEIGHT = 180 LBS.



MANHOLE COVER  
(SCALE 1" = 6")  
WEIGHT = 170 LBS.



MANHOLE FRAME  
(ALTERNATE)  
(SCALE 1" = 6")  
WEIGHT = 180 LBS.

STEEL SCHEDULE

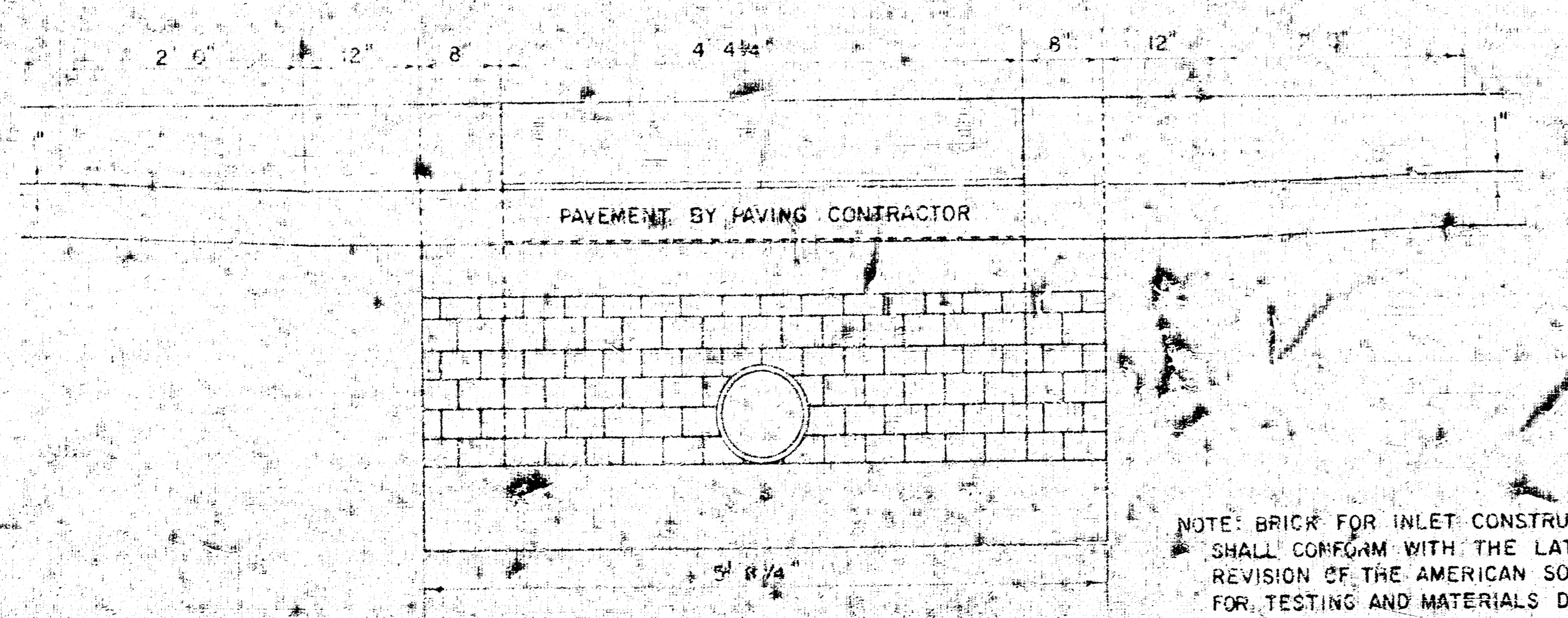
BAR NUMBER	C1	C2	W-42	W-50	W-60	W-70	W-80	W-90	W-100	W-120	W-144	WT LBS.
1	1	2	3	4	5	6	7	8	9	10	11	12
SIZE	1/2"	3/8"	3/8"	3/8"	3/8"	3/8"	3/8"	3/8"	3/8"	3/8"	3/8"	
W-42	6.5"	5.4"	5.5"									60"
W-50	8.1"	4.4"	5.5"									77"
W-60	10.1"	5.4"	5.5"									97"
W-70	11.1"	6.4"	5.5"									111"
W-80	12.1"	7.4"	5.5"									124"

STANDARD CURB INLET PRECAST TOPS

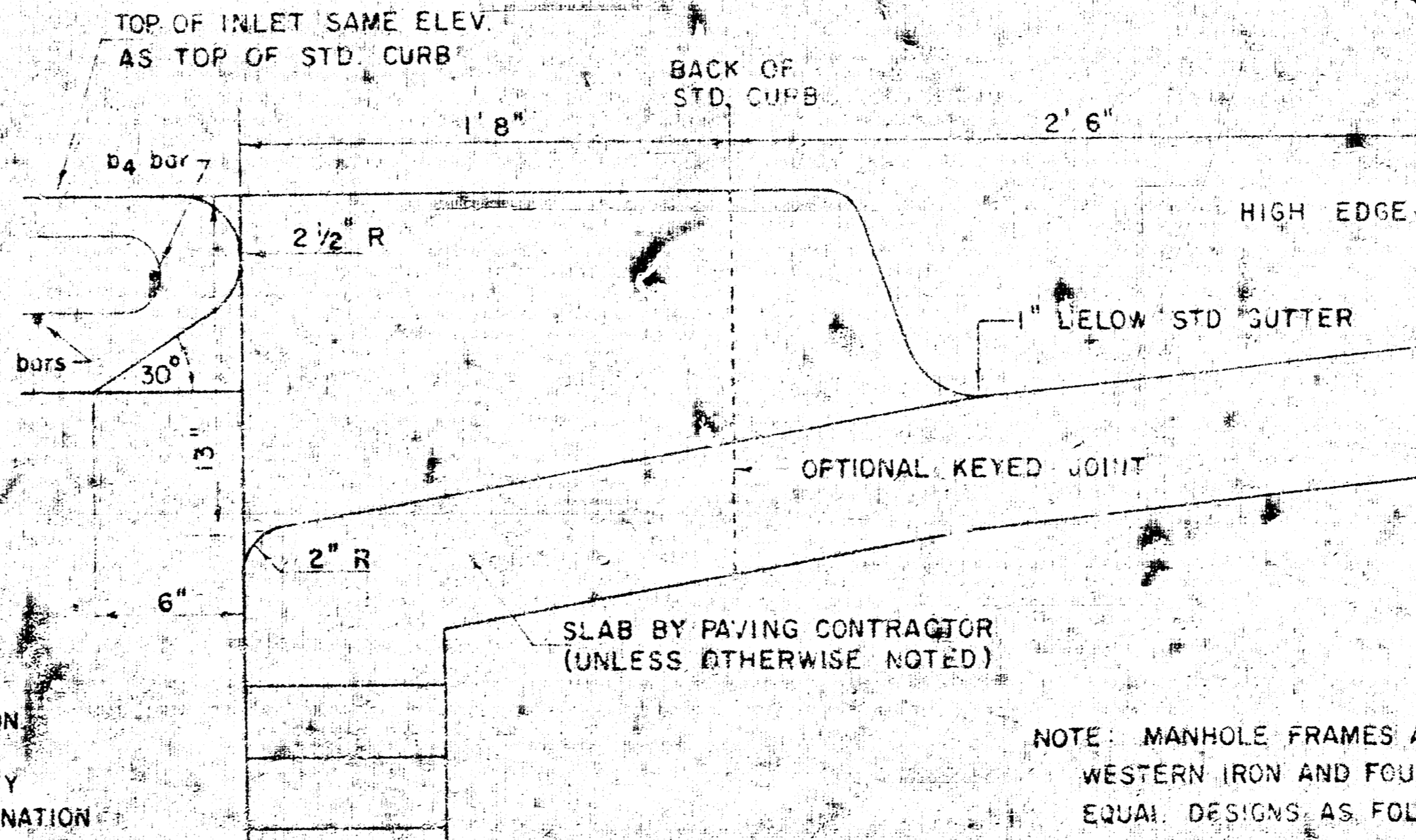
W	PRE-CAST TOP SIZE	PIPE SIZE	CU. YD. CONC.
4' 2"	36" x 5' 8 1/4" x 7 1/2"	21" & SMALLER	0.46 *
5' 0"	44" x 5' 8 1/4" x 7 1/2"	24" & 30"	0.57 *
6' 0"	54" x 5' 8 1/4" x 7 1/2"	36" & 42"	0.71 *
7' 0"	64" x 5' 8 1/4" x 7 1/2"	48" & 54"	0.84 *
8' 0"	74" x 5' 8 1/4" x 7 1/2"	60" & 66"	0.97 *

\* GROSS VOLUME

NOTE: C2 BARS TO BE PLACED APPROX. 2" BELOW TOP OF INLET COVER



SECTION C-C  
(SCALE 1" = 1'0")



SECTION B-B  
(SCALE 1" = 6")

NOTE: BRICK FOR INLET CONSTRUCTION SHALL CONFORM WITH THE LATEST REVISION OF THE AMERICAN SOCIETY FOR TESTING AND MATERIALS DESIGNATION C-32 FOR MANHOLE BRICK GRADE MS.

NOTE: MANHOLE FRAMES AND COVER ARE WESTERN IRON AND FOUNDRY CO. INC. OR EQUAL DESIGNS AS FOLLOWS  
FRAME: 500 L64  
FRAME (ALTERNATE): 500 A4  
COVER: 222 S4 "NOBBY"

DETAIL STANDARD TYPE IA CURB INLET  
CITY OF WICHITA, KANSAS  
R. W. LINN - CITY ENGINEER  
OCTOBER 1978  
PAGE 3 OF 3