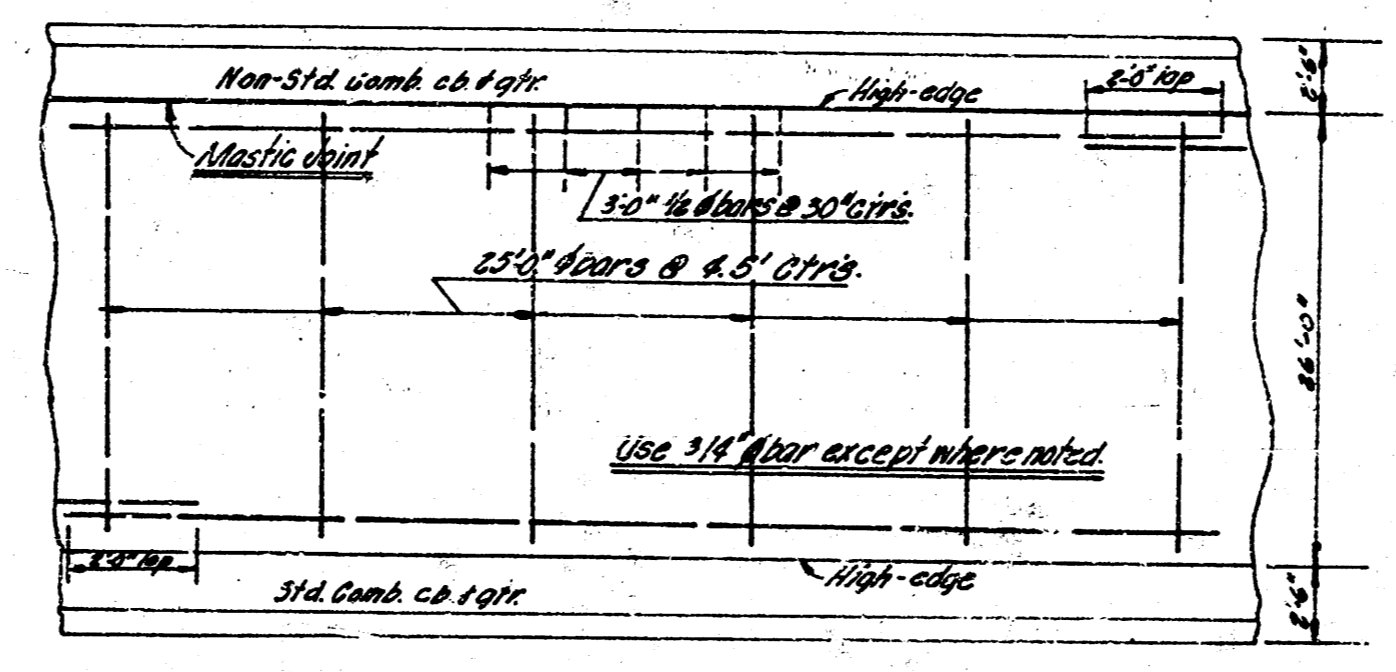
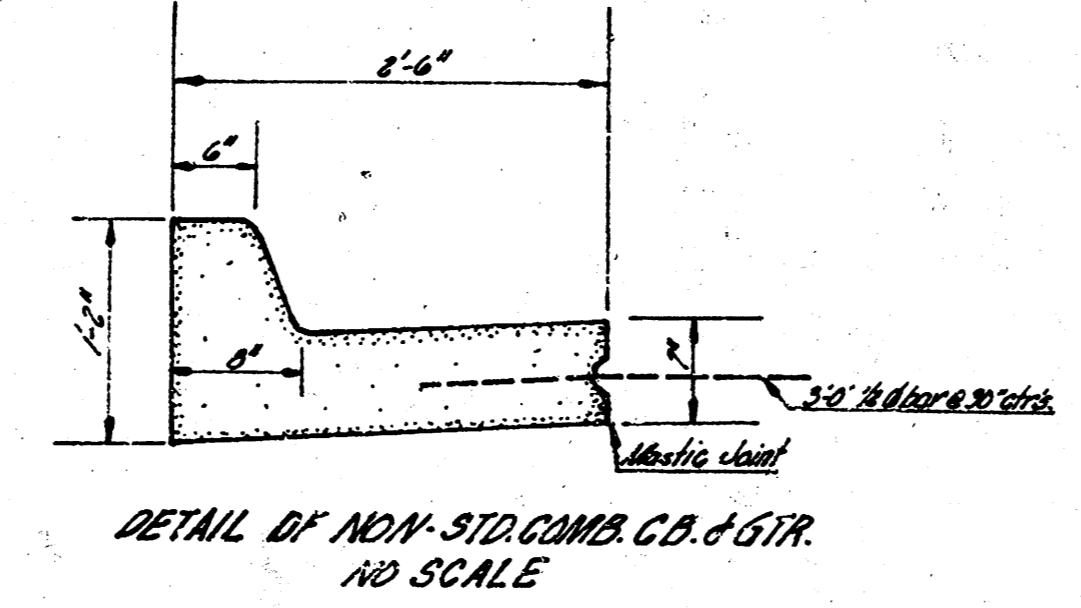
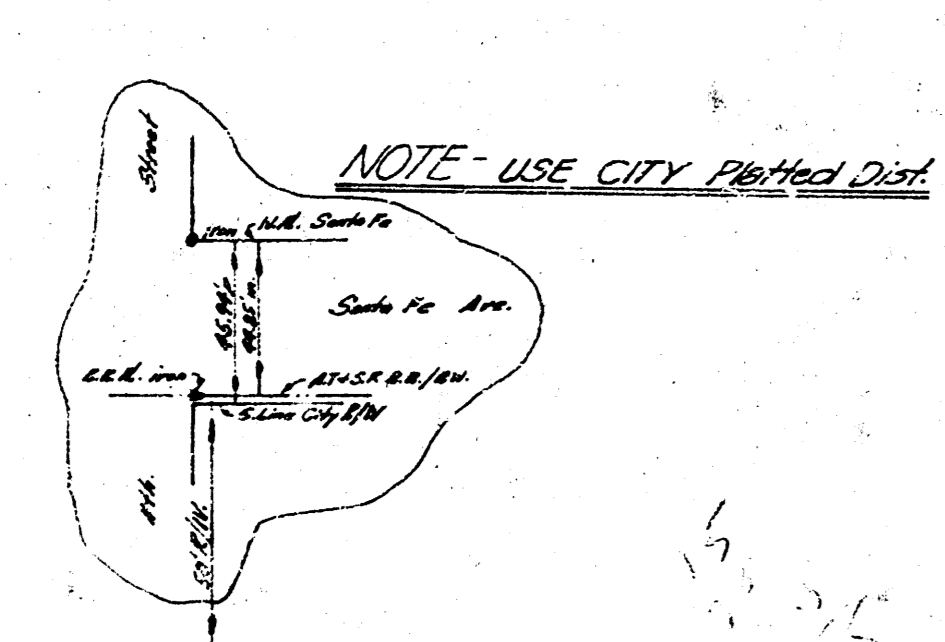
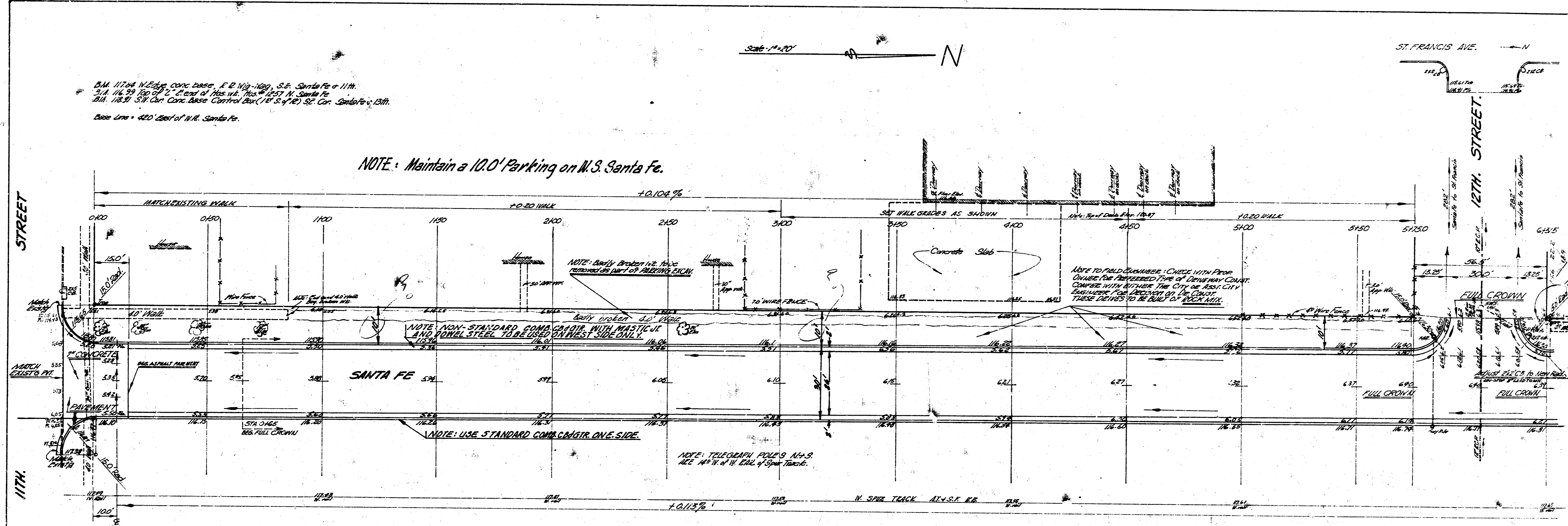
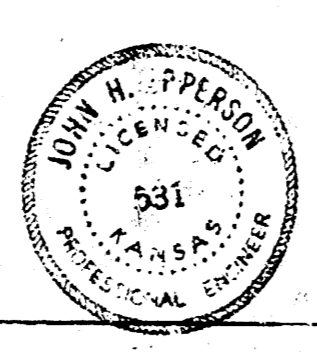
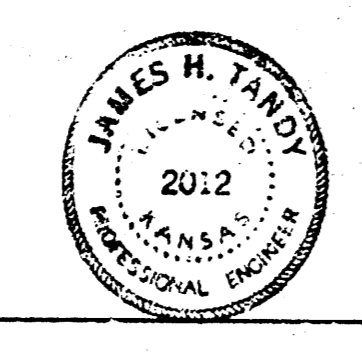


B.M. 117th N. Edge Conc. Base, E. D. 117th-120th, S.E. Santa Fe & 11th.  
 S.A. 1/4 Sec. 29, T. 2 S., R. 10 W., M. 1 N., Santa Fe Co., Kan.  
 S.A. 1/4 Sec. 29, T. 2 S., R. 10 W., M. 1 N., Santa Fe Co., Kan.  
 Base Line - 400' East of N.E. Santa Fe.

NOTE: Maintain a 10.0' Parking on W.S. Santa Fe.

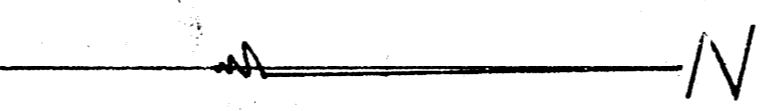


Prop.	Excavation
1078 4' x 4'	15' 0" 299.5
1078 4' x 4'	14' 0" 297.9
2670 3' x 4'	17' 0" 328.7



SANTA FE AVENUE  
 N.L. 117th STREET - S.L. 127th STREET  
 26-2-30 A.C.  
 City of Wichita, Kansas  
 B.E. SMITH CITY ENGINEER  
 DATE: MAY 1959, PROJ. NO. C18-153

Sheet 1 of 1



NOTE TO FIELD ENGINEER/CONTRACTOR: When Constructing 100' Concrete Slab Bridge over Santa Fe River, (a) Wall Section to be placed with Rock Mix in New Drive Area.

NOTE: Maintain a 100' Parking on N.S. Santa Fe.

