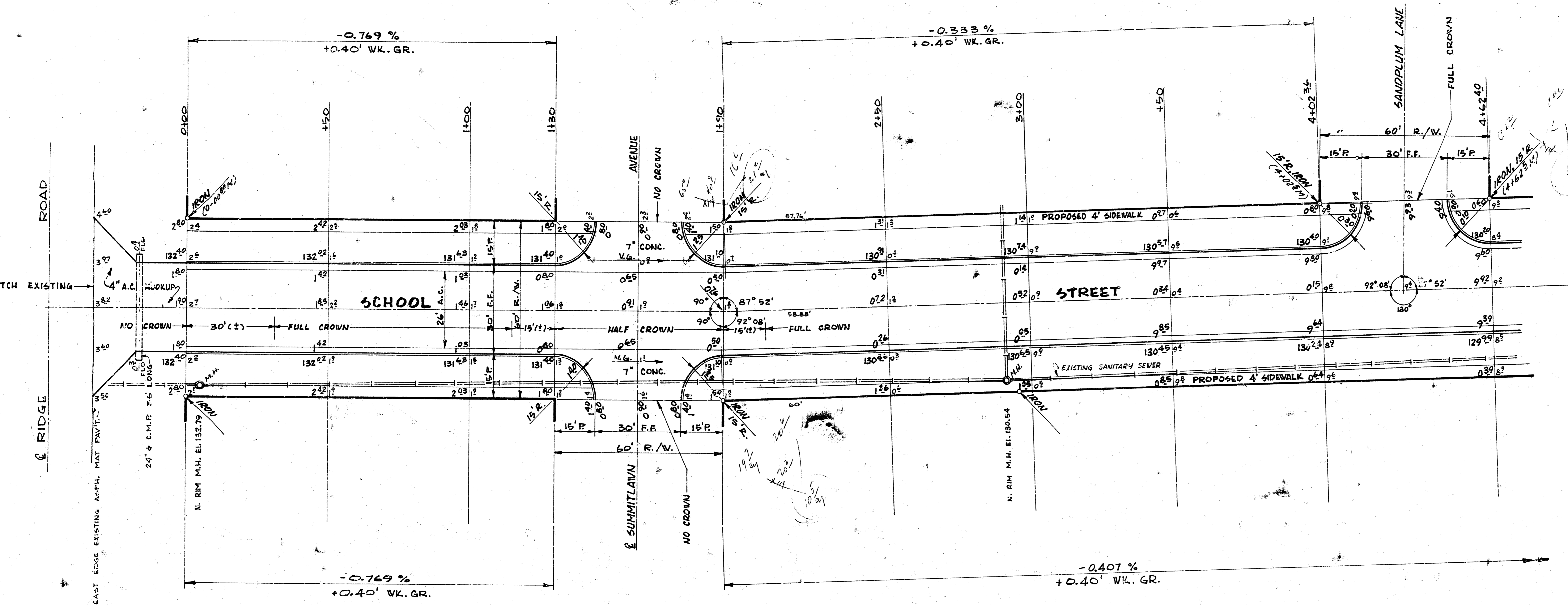


B.M. 142.19 R.R. SPIKE W. SIDE P. POLE S.W. COR. 11TH ST. & RIDGE RD.
 B.M. 132.33 60' SPIKE E. SIDE P. POLE S.W. COR. SCHOOL ST. & RIDGE ROAD.
 B.M. 132.20 "X" ON N. END E. HEADWALL CONC. CULVERT 150' S. OF S. SCHOOL ST. W., ON RIDGE RD.

BASE LINE ON S. R.

GENERAL NOTES:

- 1) CONTRACTOR TO CLEAR R/W, GRADE PARKING, AND COMPACT FILL AS NECESSARY TO CONSTRUCT PROPOSED 4' SIDEWALK. SIDEWALK TO BE CONSTRUCTED BY OTHERS.
- 2) ALL EXCESS EXCAVATION IS TO BE USED TO COMPACT FILL IN ROADWAY ON HAZLEWOOD LANE, PROJECT NO. C18-64.
- FIELD ENGINEER TO TAKE PRELIMINARY & FINAL CROSS-SECTIONS OF FILL AREA ON HAZLEWOOD.
- 3) ALL DIMENSIONS BASED ON PLATTED DIMENSIONS, EXCEPT FOR MEASURED DISTANCE NOTED BY FOLLOWING THE DISTANCE.



SCHOOL STREET FROM E.L. RIDGE ROAD TO E.L. LOT 14, BLK. 'L', COUNTRY ACRES 4TH 'B' ADDN.

26'-2'-30" ASPHALTIC CONCRETE PAVEMENT

CITY of VICHITA, KANSAS.

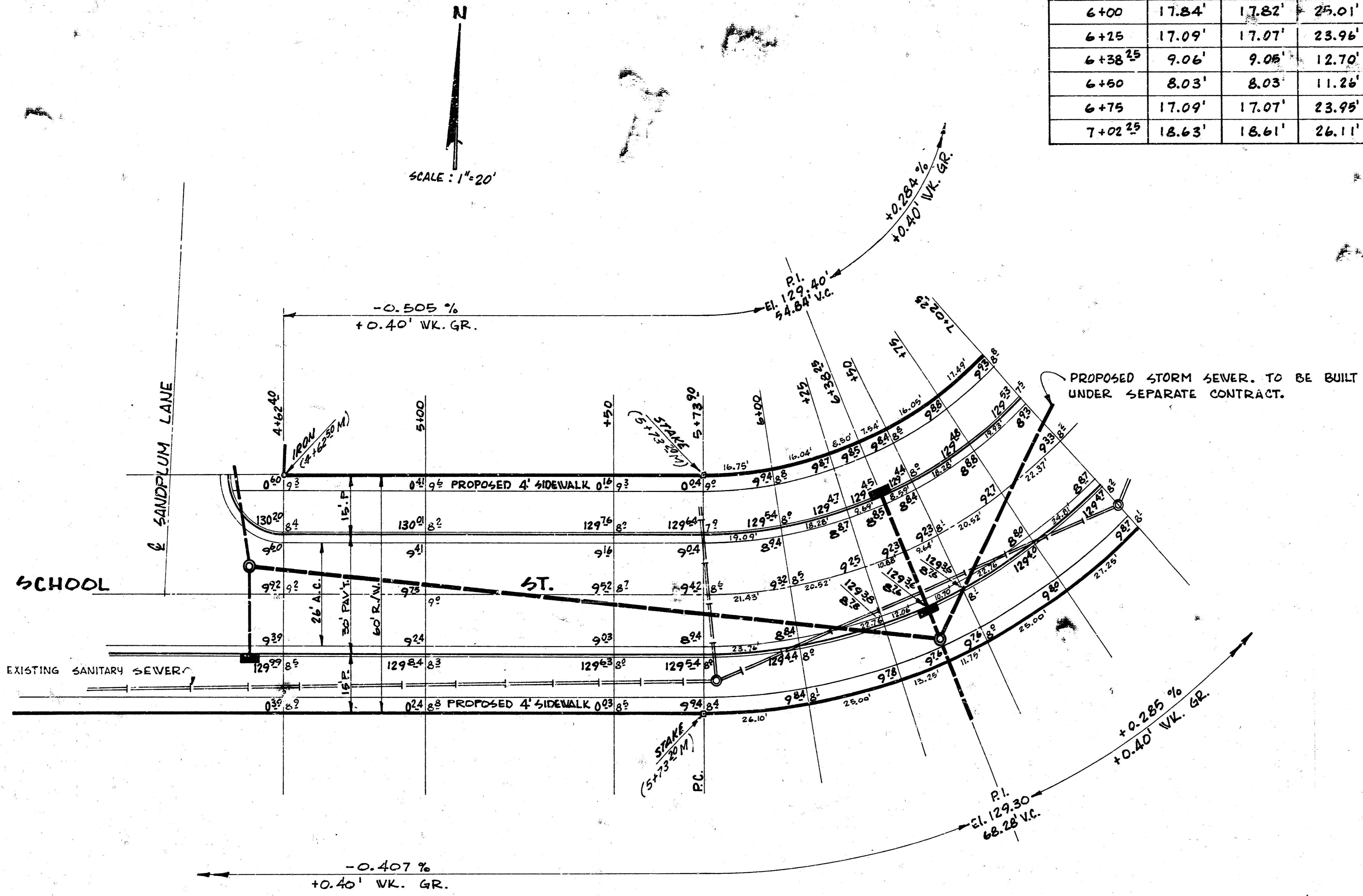
B.E. SMITH CITY ENGINEER

DATE: OCT., 1968

PROJECT No. C18-66
 SHEET 1 of 3

CURVE DATA : BASED ON S.P. R=167.50' Δ=43° 54' 14" DEFLECTION=10.26193 MIN./FT.

STATION	S' OFFSET FROM FACE OF N. CL.		S' OFFSET FROM FACE OF S. CL.		DEFLECTION	ACCUMULATED DEFLECTION
	ARC	CHORD	ARC	CHORD		
P.C. 5+73.30	—	—	—	—	—	—
6+00	17.84'	17.82'	25.01'	24.98'	4° 27' 50"	4° 27' 50"
6+25	17.09'	17.07'	23.96'	23.94'	4° 16' 35"	8° 44' 25"
6+38.25	9.06'	9.05'	12.70'	12.69'	2° 15' 58"	11° 00' 21"
6+50	8.03'	8.03'	11.26'	11.26'	2° 00' 35"	13° 00' 56"
6+75	17.09'	17.07'	23.95'	23.93'	4° 16' 33"	17° 17' 29"
7+02.25	18.63'	18.61'	26.11'	26.08'	4° 39' 38"	21° 57' 07"



SCHOOL STREET

PROJECT NO. C18-66
SHEET 2 OF 3

