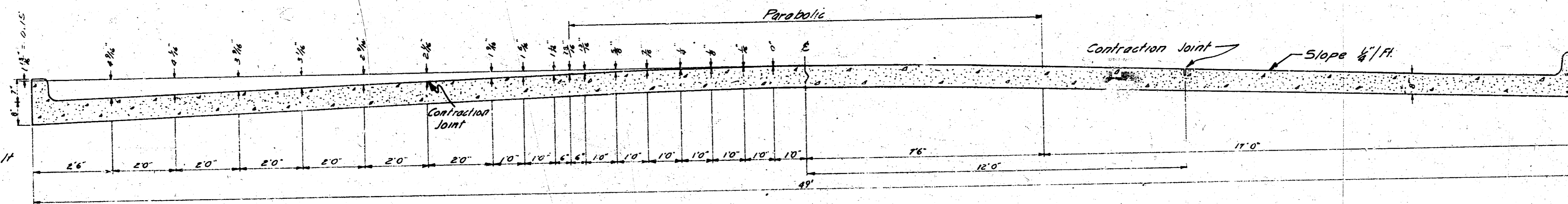


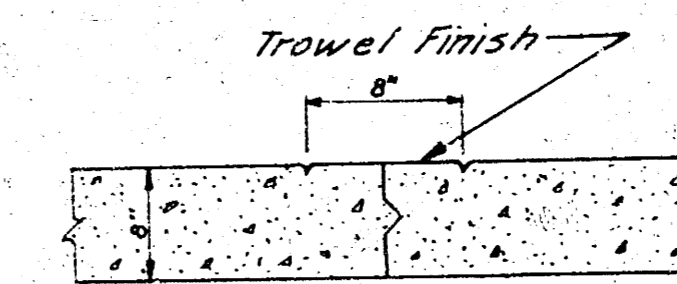
SENECA

FROM S.L. PAWNEE TO S.L. ESTHNER

PROJECT NO. C 17-31

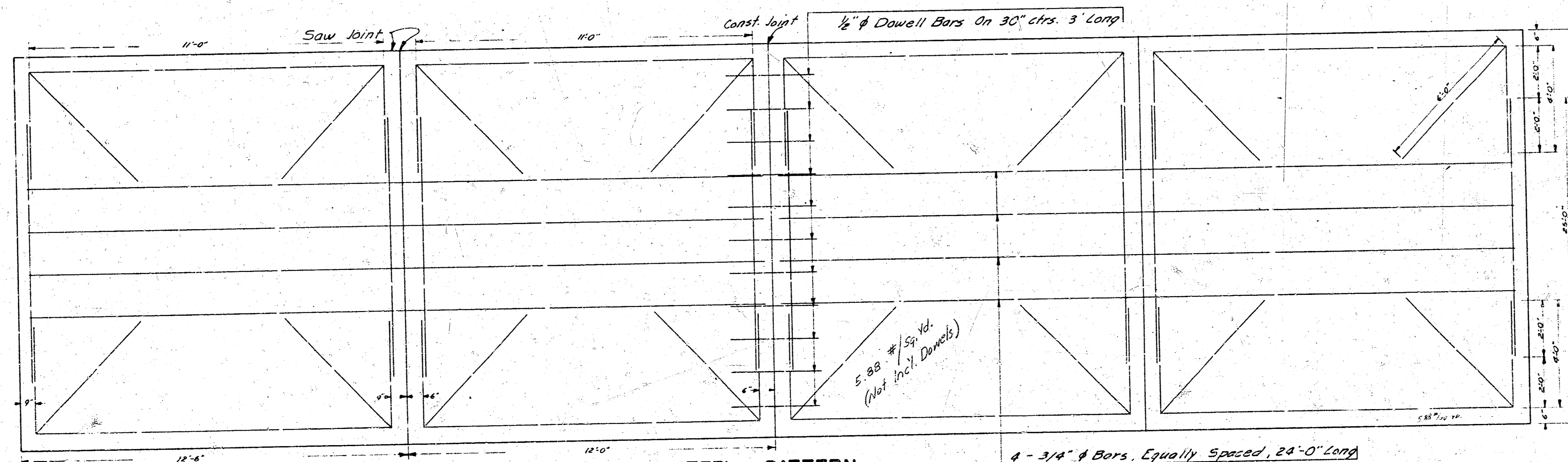


TYPICAL SECTION
No Scale



MARKER DETAIL
No Scale
Place Full Length of Job

CONTRACTION JOINT
No Scale
To Be Used At 30' Intervals
Except Where An Expansion
Joint Is Used



STEEL PATTERN
No Scale

Use 3/8" ϕ Bars Unless Otherwise Specified

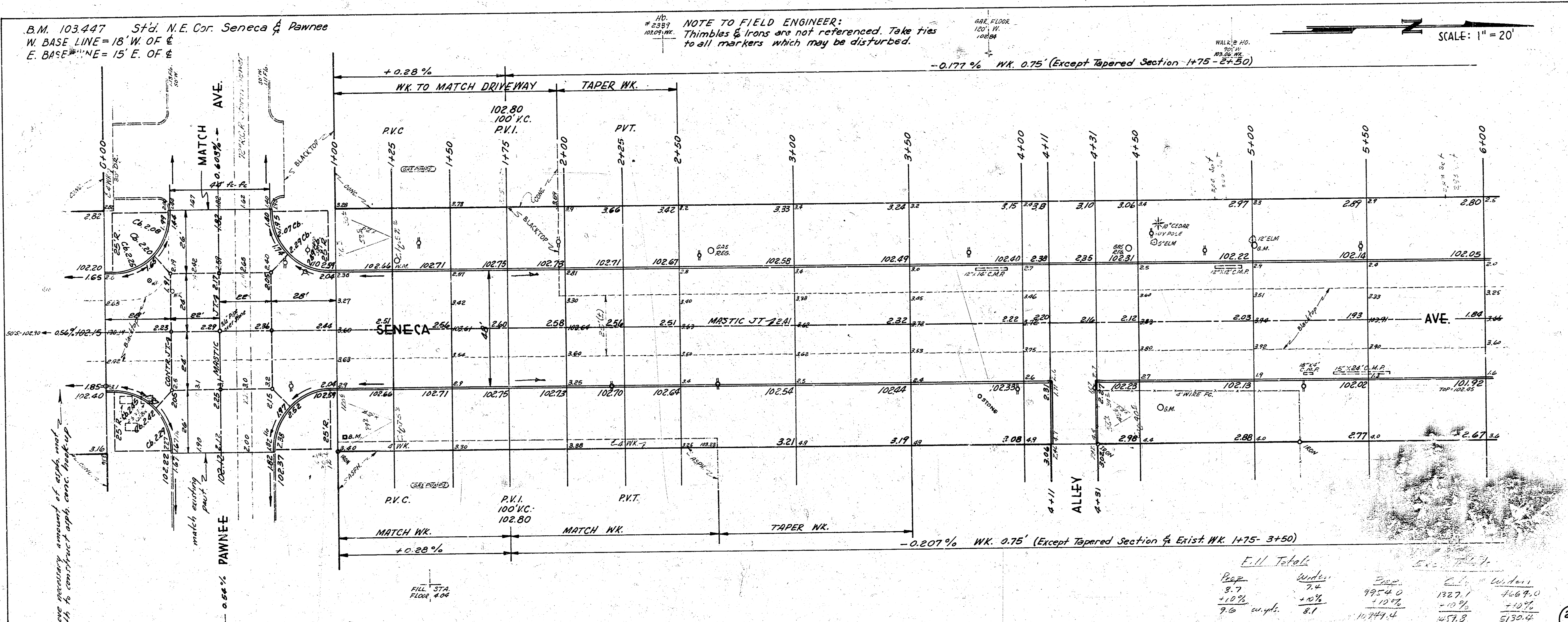
EXPANSION JOINT
No Scale
To Be Used At 120' Intervals

1/17

B.M. 103.447 Std. N.E. Cor. Seneca & Pawnee
 W. BASE LINE = 18' W. OF E
 E. BASE LINE = 15' E. OF E

NOTE TO FIELD ENGINEER:
 Thimbles & Irons are not referenced. Take ties
 to all markers which may be disturbed.

SCALE: 1" = 20'



Remove necessary amount of asphalt
 south to construct asphalt curb through

NOTE: Entrance Pipes to be disposed of
 as directed by City Dirt Checker.
 Wood entrance culverts to be com-
 pay them incidental to excavation.

NOTE: Traffic signals to be installed at Pawnee.
 Construction to coordinate with traffic exp.
 Intersections at Pawnee to be completed & open
 to traffic as quickly as possible.

Detour Route: West from Seneca on Esthner
 to Vine; south on Vine to Pawnee; east on
 Pawnee to Seneca.

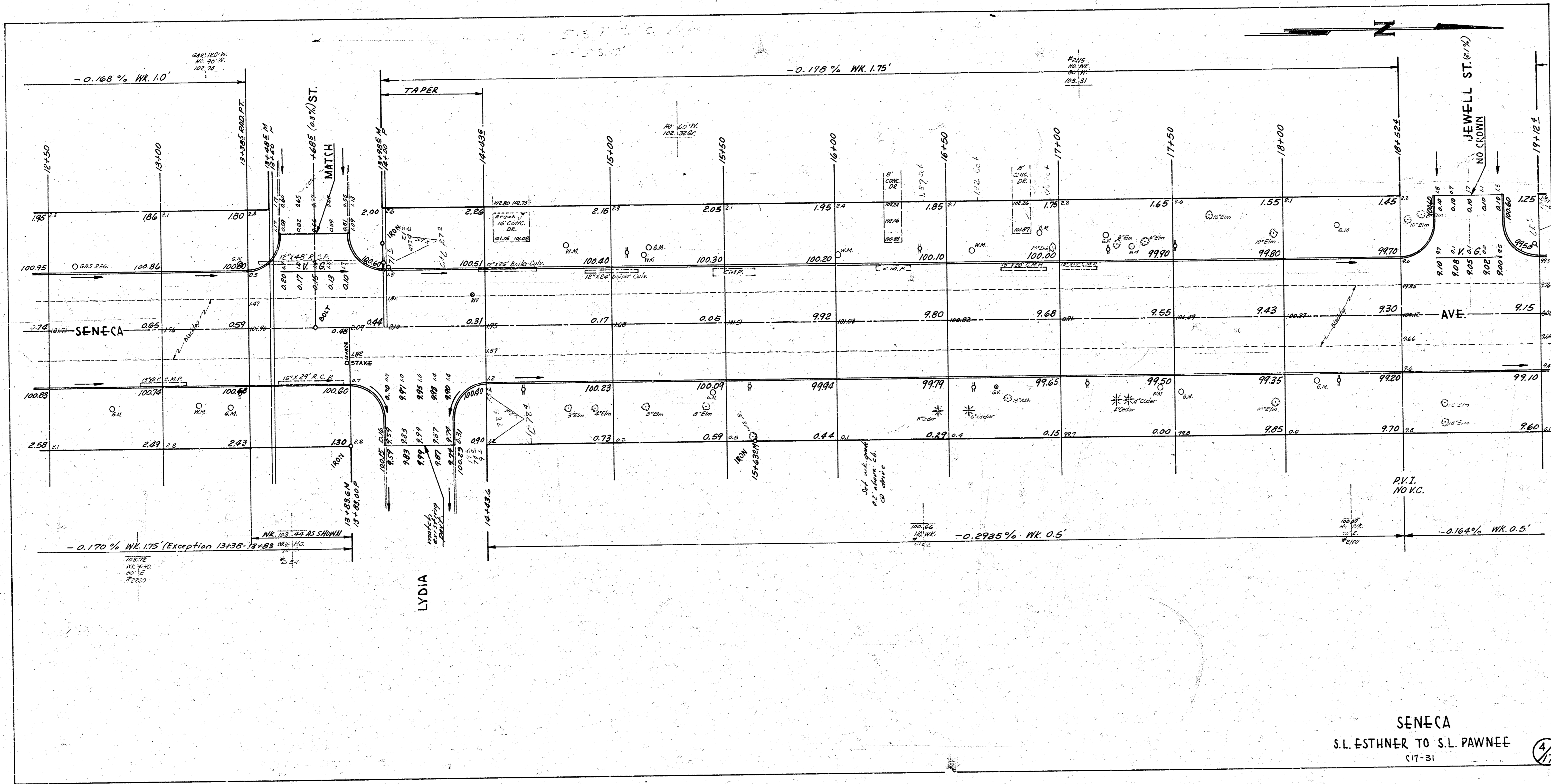
Fill Totals

Prop.	Width	Depth	Volume
3.7	7.4	1.0	9954.0
+10%	+20%	+10%	1327.1
7.0 cu. yds.	8.7		11281.1

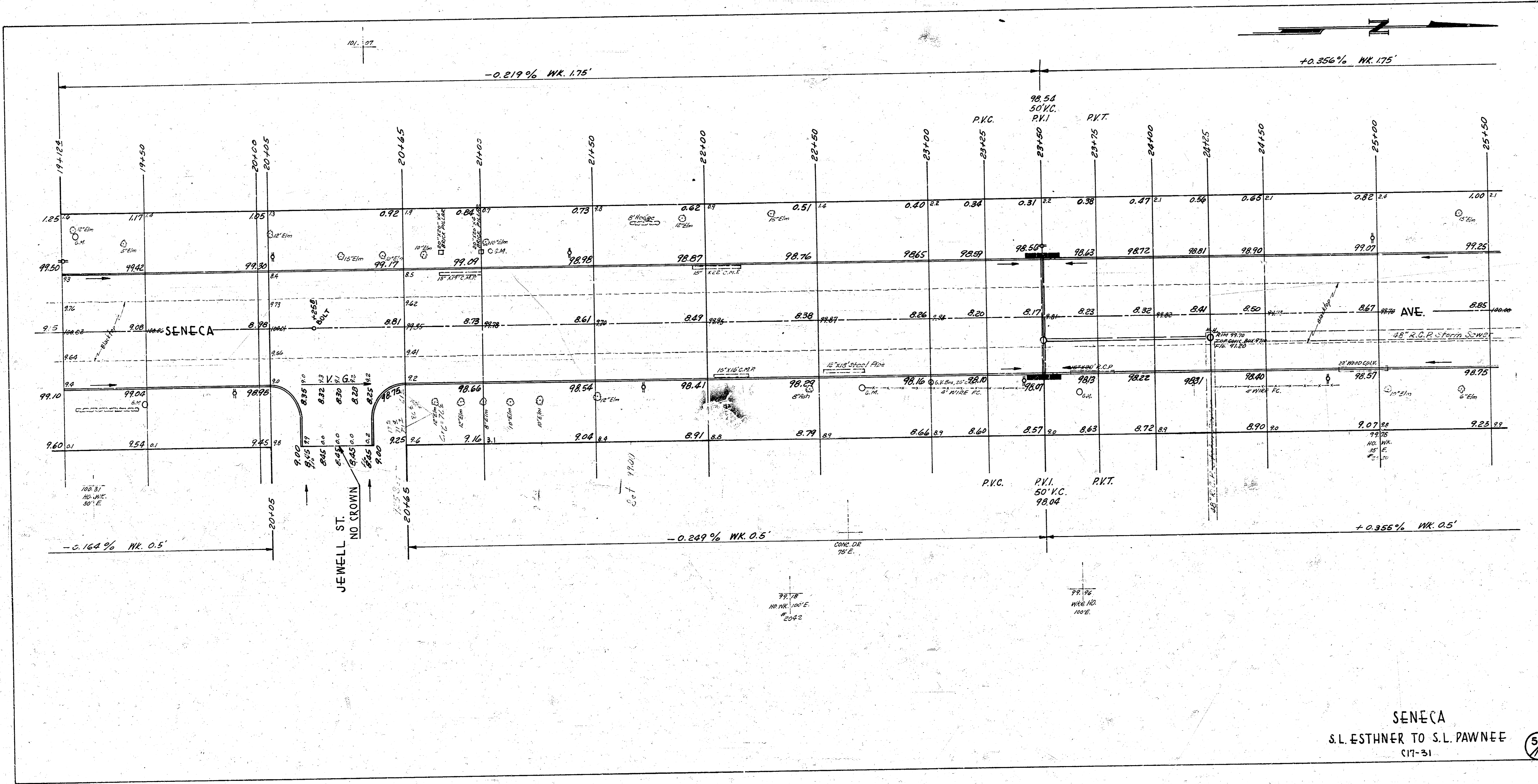
SENECA
 S.L. ESTHNER TO S.L. PAWNEE
 30' CONC. & CB.-WIDEN TO 48'-8"
 CITY OF WICHITA, KANSAS
 B.E. SMITH CITY ENGINEER
 MARCH 1959, PROJ. NO. C17-31



2/17



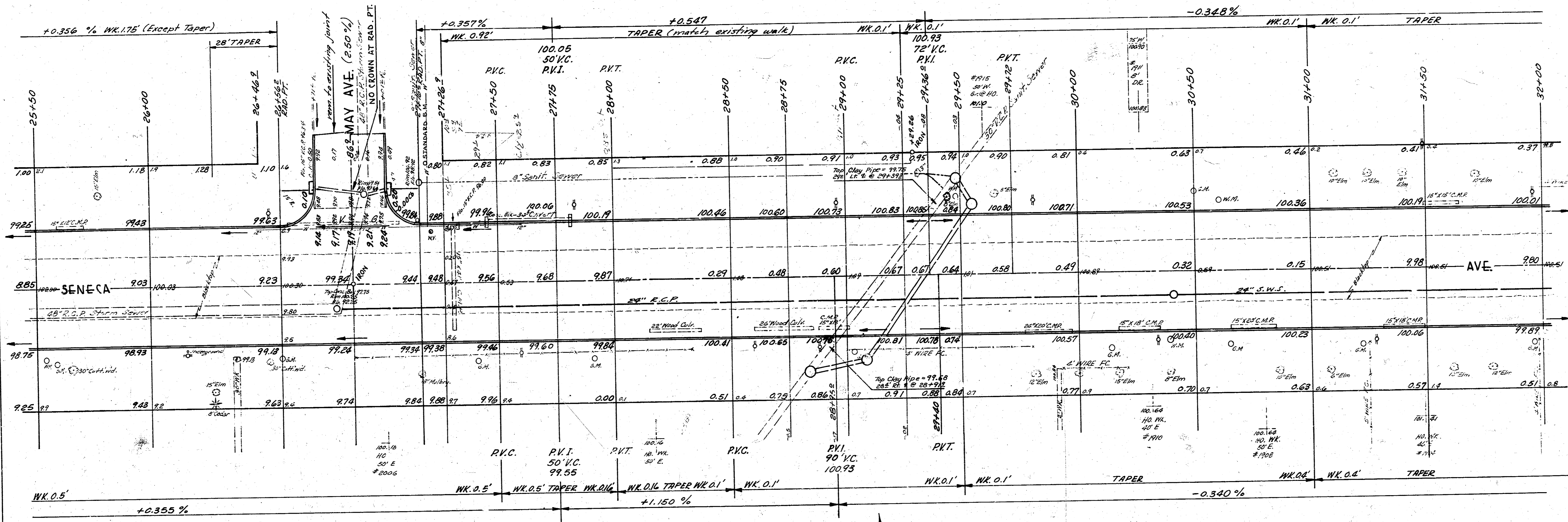
SENECA
 S.L. ESTHNER TO S.L. PAWNEE
 C17-31 (4/17)



SENECA
S.L. ESTHNER TO S.L. PAWNEE
C17-31

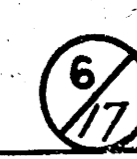
5/17

B.M. 101.111 Std. N.W. Cor. Seneca & May

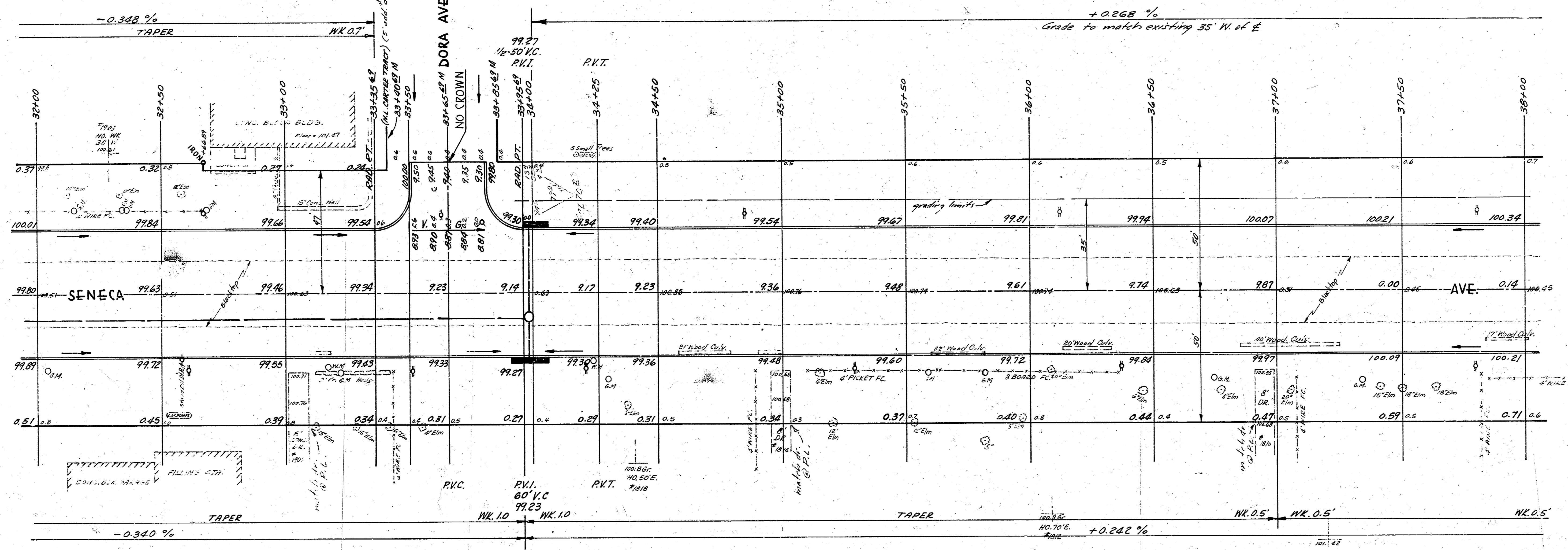


NOTE: Paving contractor is to break in top of 30" V.C.P. & fill with sand after sewer contractor has completed installation. Bid price at time award will include all costs of breaking & filling old pipe.

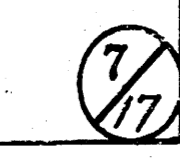
SENECA
S.L. ESTHNER TO S.L. PAWNEE
(17-31)

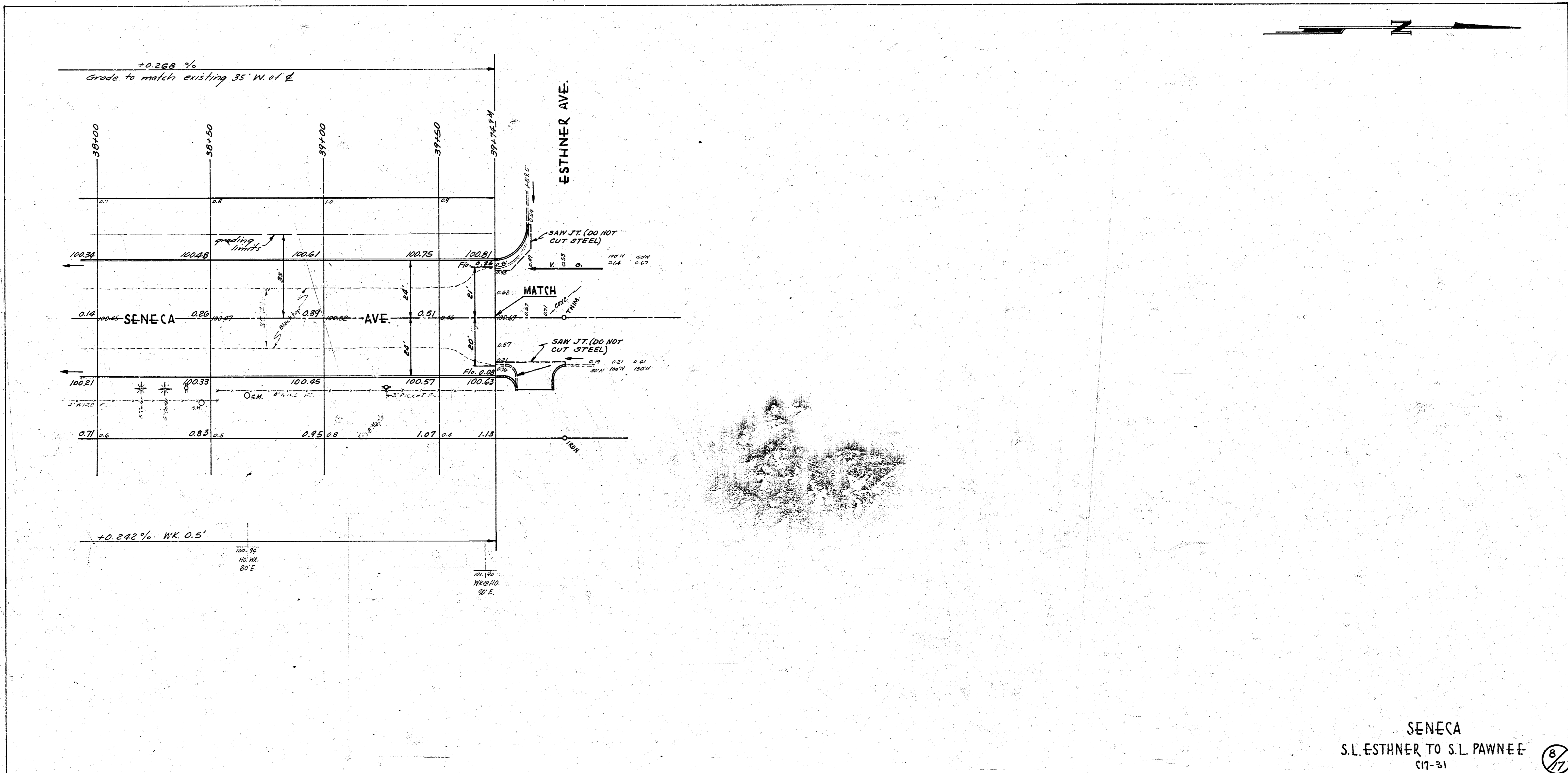


B.M. 111.19 "a" on N.W. Cor. Gas Pump Base E. of 32+47



SENECA
S.L. ESTHNER TO S.L. PAWNEE
(11-31)

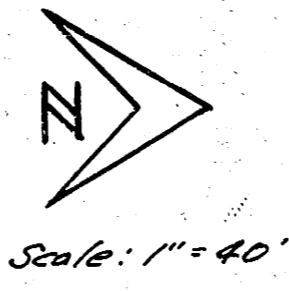




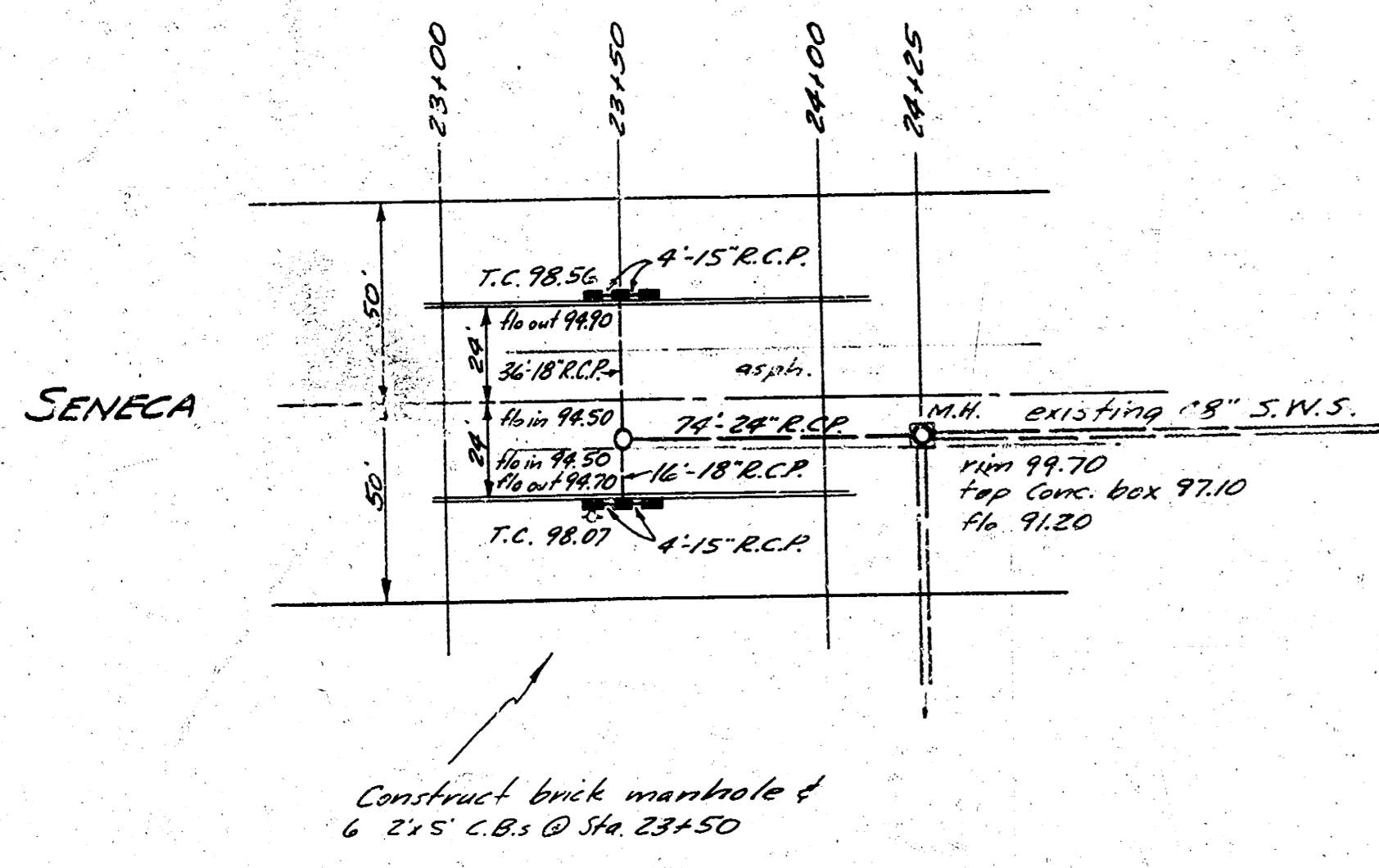
SENECA
 S.L. ESTHNER TO S.L. PAWNEE
 117-31 (8/11)

B.M. 101.11 Standard N.W. Cor. Seneca & May

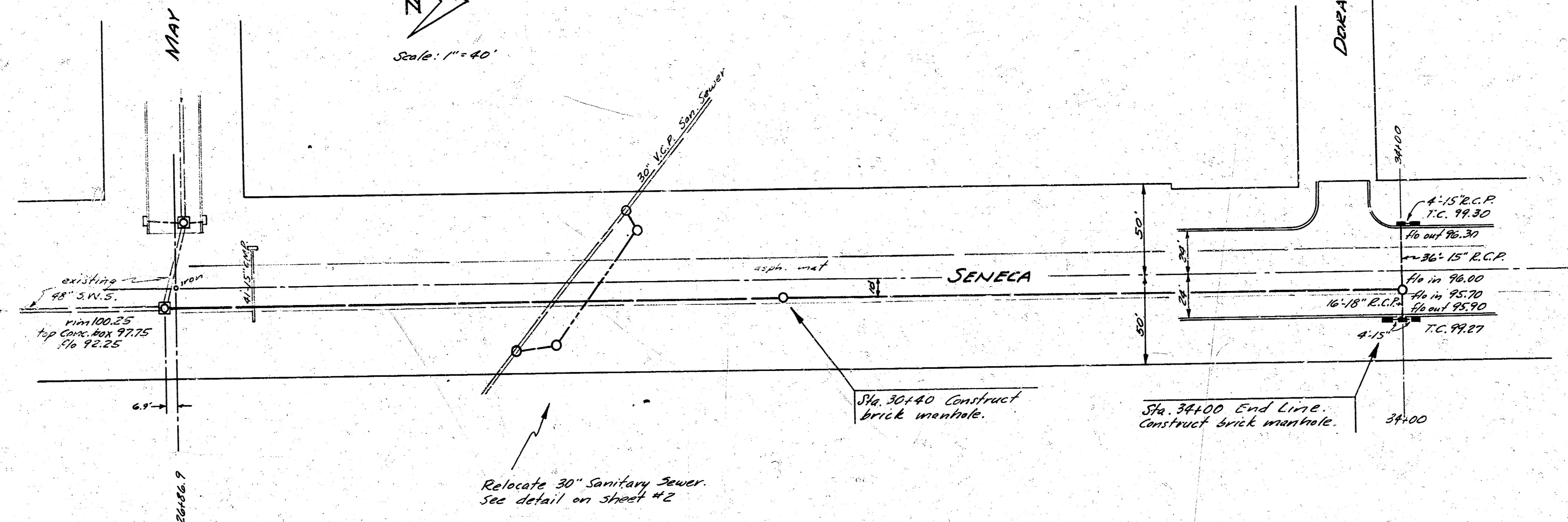
B.M. 111.19 "d" on N.W. Cor. Gas Pump Base E @ 32+97



Scale: 1"=40'



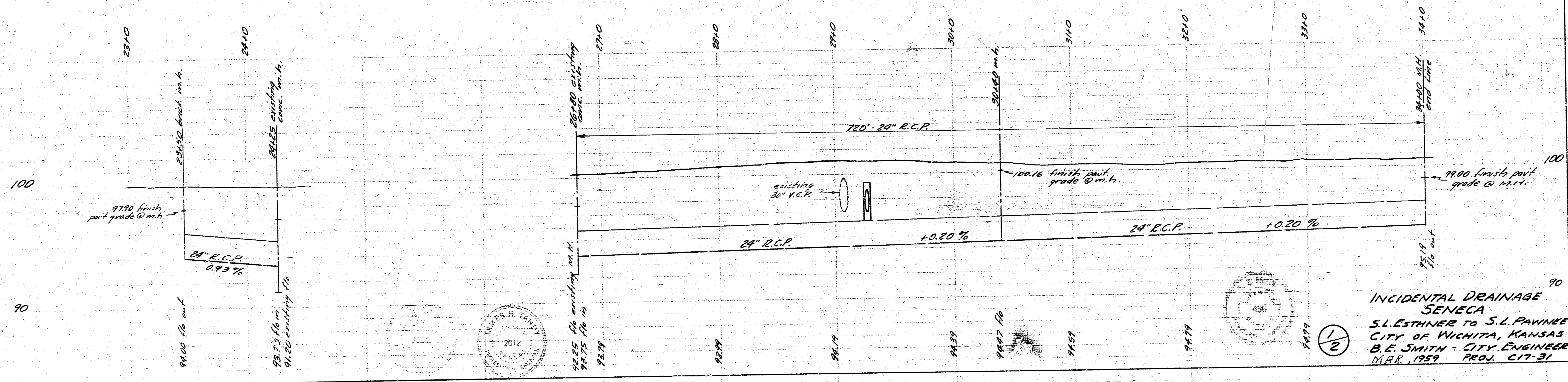
Construct brick manhole & 6 2'x5' C.B.s @ Sta 23+50



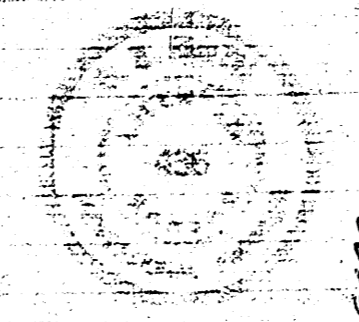
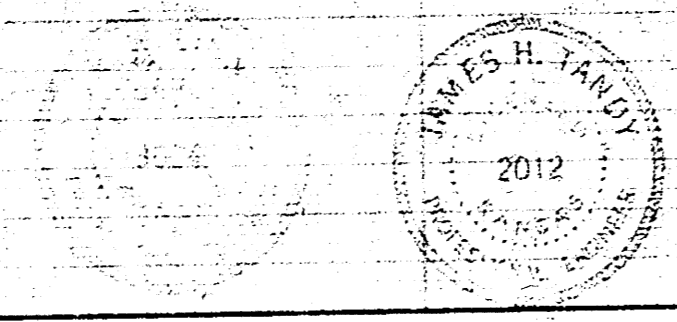
Relocate 30" Sanitary Sewer. See detail on sheet #2

Sta. 32+40 Construct brick manhole.

Sta. 34+00 End Line. Construct brick manhole.

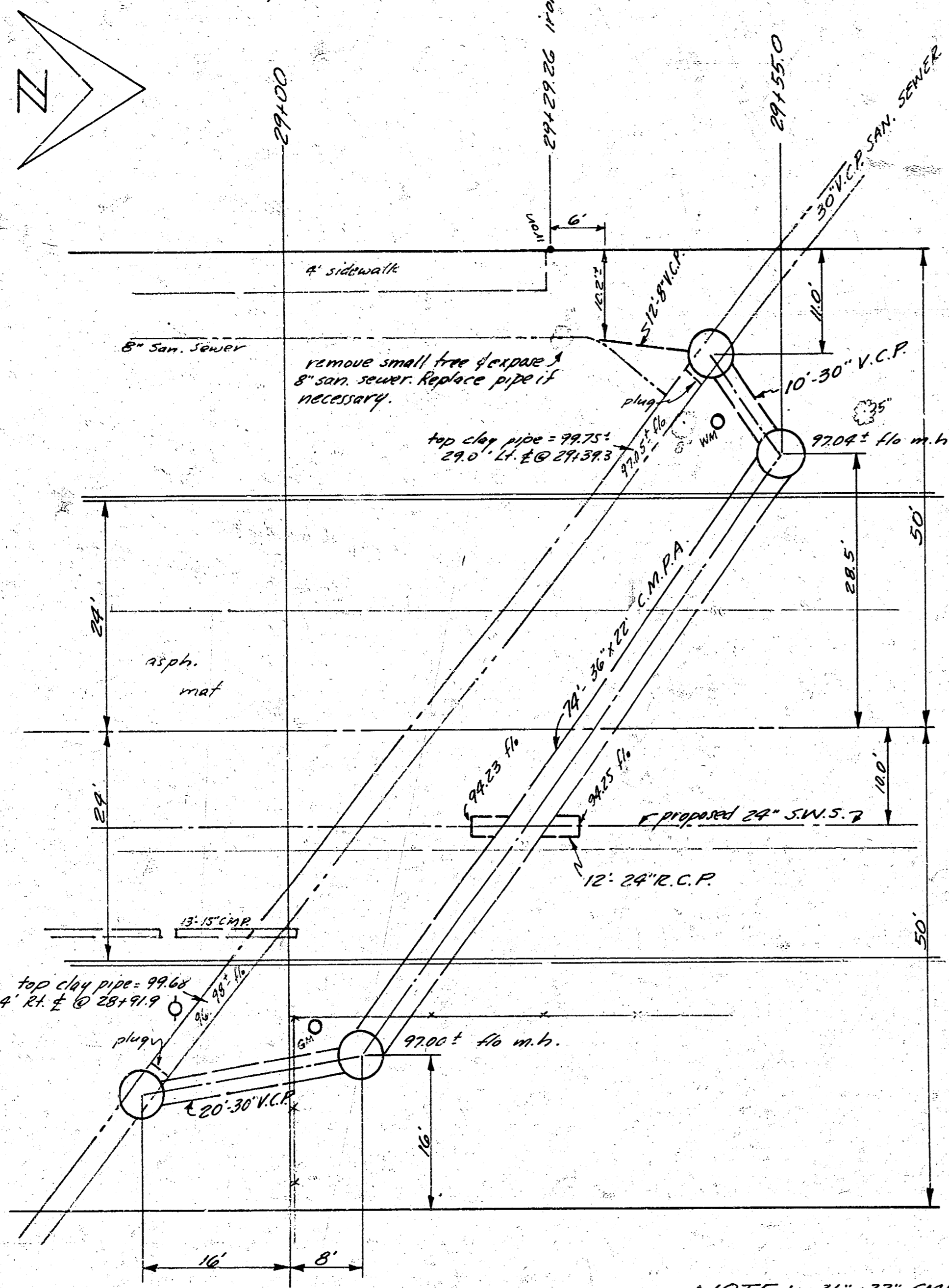


INCIDENTAL DRAINAGE
 SENECA
 S.L. ESTHNER TO S.L. PANNKE
 CITY OF VICHITA, KANSAS
 B.E. SMITH - CITY ENGINEER
 MARCH, 1959 PROJ. C-17-31



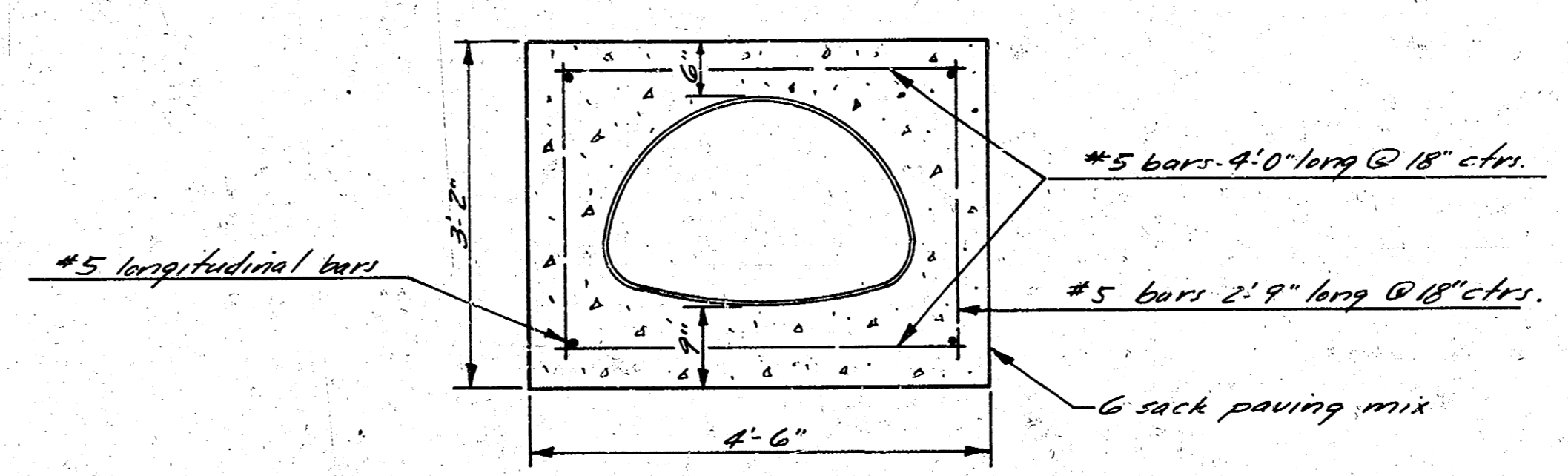
1/2

B.M. 101.11 Standard N.W. Cor. Seneca & May



Sanitary Sewer Relocation
Scale: 1" = 10'

NOTE: 36" x 22" C.M.P.A. is to be installed, encased, 30" V.C.P. laid, and manhole on existing 30" San. Sewer built up to top of pipe prior to breaking into old sewer. Existing 8" san. sewer is to be connected to new manhole prior to plugging old line between manholes. After plugging old line at new manhole the abandoned section is to be burried out. Cost of plugging & pumping old line, & all other necessary work of relocation not covered by bid items to be included in bid price of non-standard brick manholes. Contractor has option to install all of 24" S.W.S. prior to sanitary relocation or to install 12' of 24" R.C.P. only @ relocation as shown.



TYPICAL SECTION - REINFORCED CONC. ENCASUREMENT
Scale: 3/4" = 1'-0"

Use Armo asbestos-bonded or coated pipe arch 36" x 22" - 14 gage. Use two piece standard corrugated connecting bands over neoprene gasket.

INCIDENTAL DRAINAGE
SENECA AVE.
PROJ. C17-31

3/2

6