

CITY OF WICHITA, KANSAS

STREET IMPROVEMENTS

(G.P-S. 3RD ADDITION)

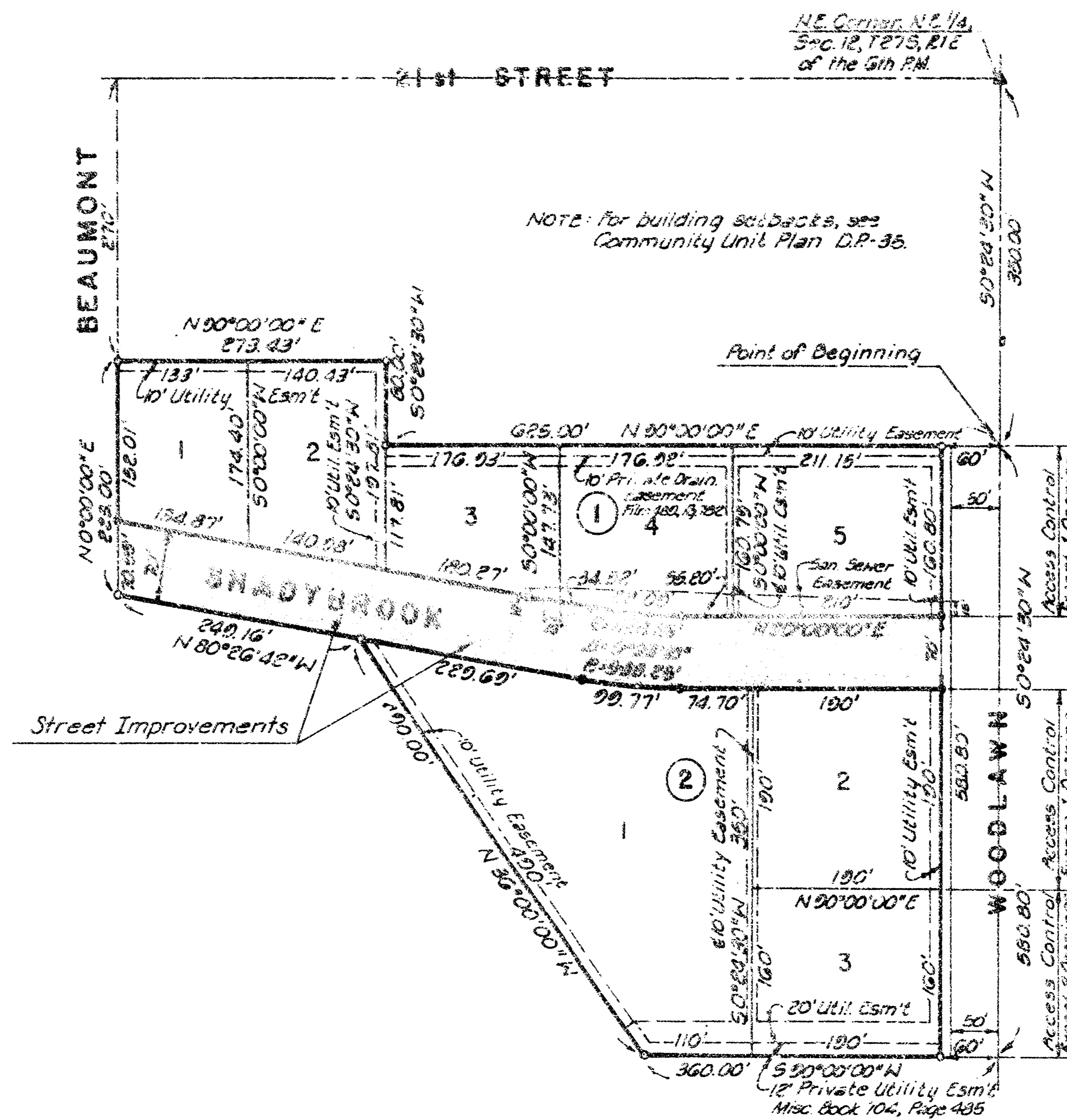
R. W. BRUGGEMAN - DIRECTOR OF ENGINEERING/CITY ENGINEER

PROJECT NO. 472-76-245-81114-000-000-001

BENCH MARKS

B.M. - City of Wichita Bench Mark Disc, NE Cor. of 21st Street & Woodlawn. Elev. = 200.65

B.M. - R.R. Spike in Power Pole, SW Cor. of Bowling Alley. Elev. = 209.67



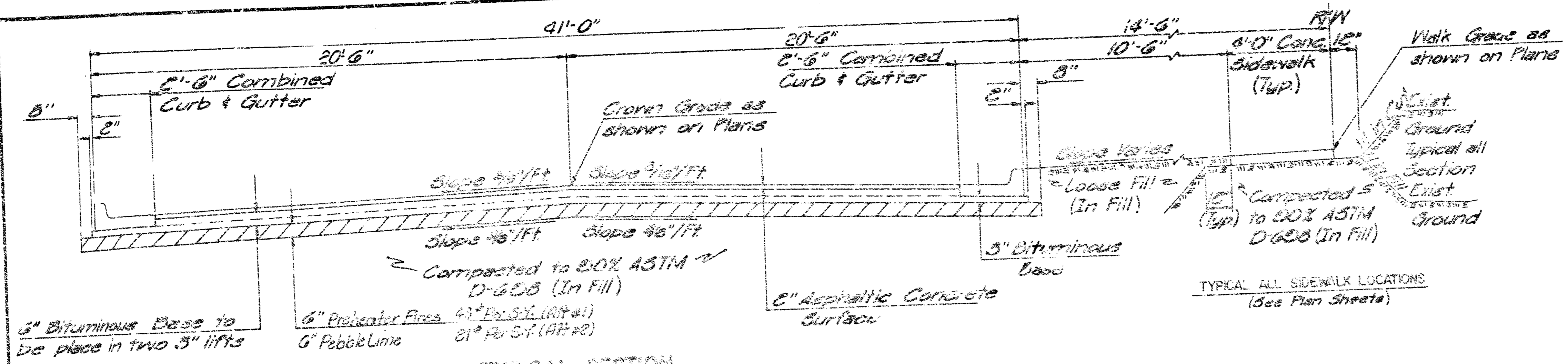
JUNE, 1982

INDEX OF SHEETS

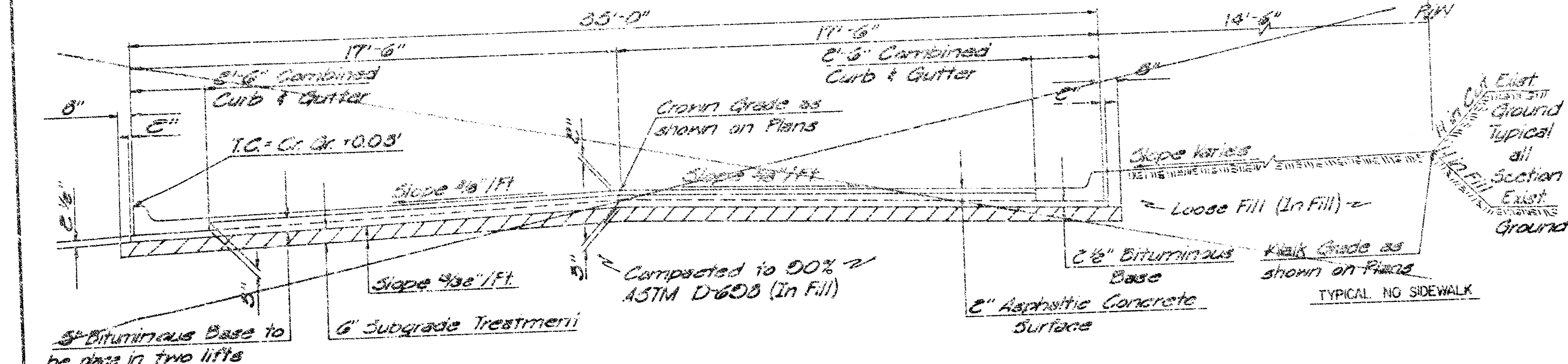
1. TITLE SHEET
2. TYPICAL SECTIONS
- 3-4. PLAN SHEETS
5. PAVING DETAILS
6. STORM SEWER PLAN & PROFILE
7. TYPE 22 CURB INLET
8. TYPE 22 CURB INLET (RADIUS)
- 9-II. CROSS SECTIONS

Note: All excess excavated material from street construction shall be wasted on Block 1 of G.P-S. 3rd Addition. The waste material shall be leveled such that no Stockpiles are formed and graded to drain.

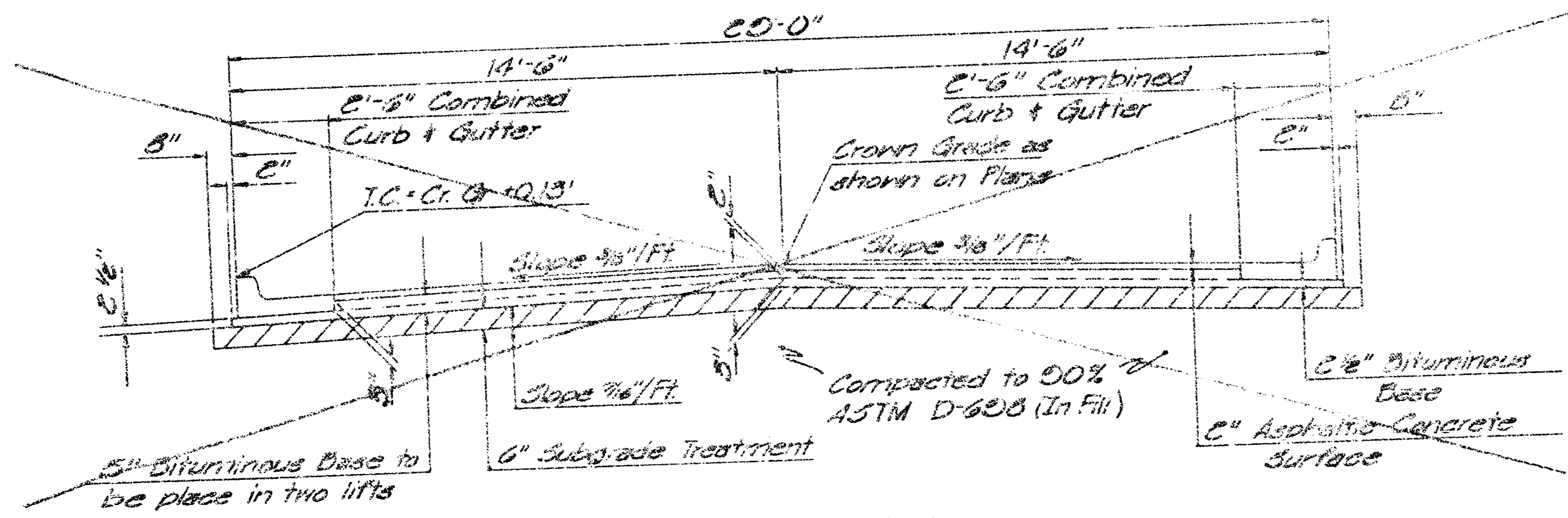
	CITY OF WICHITA, KANSAS	
	TITLE SHEET	
STREET IMPROVEMENTS		
PROJ. NO. 472-76-245-81114-000-000-001		
PROFESSIONAL ENGINEERING CONSULTANTS, P.A.		
ENGINEERS		
WICHITA, KANSAS		
Designed by BER	Job No. 8228	
Drawn by JGP	Date June, 1981	



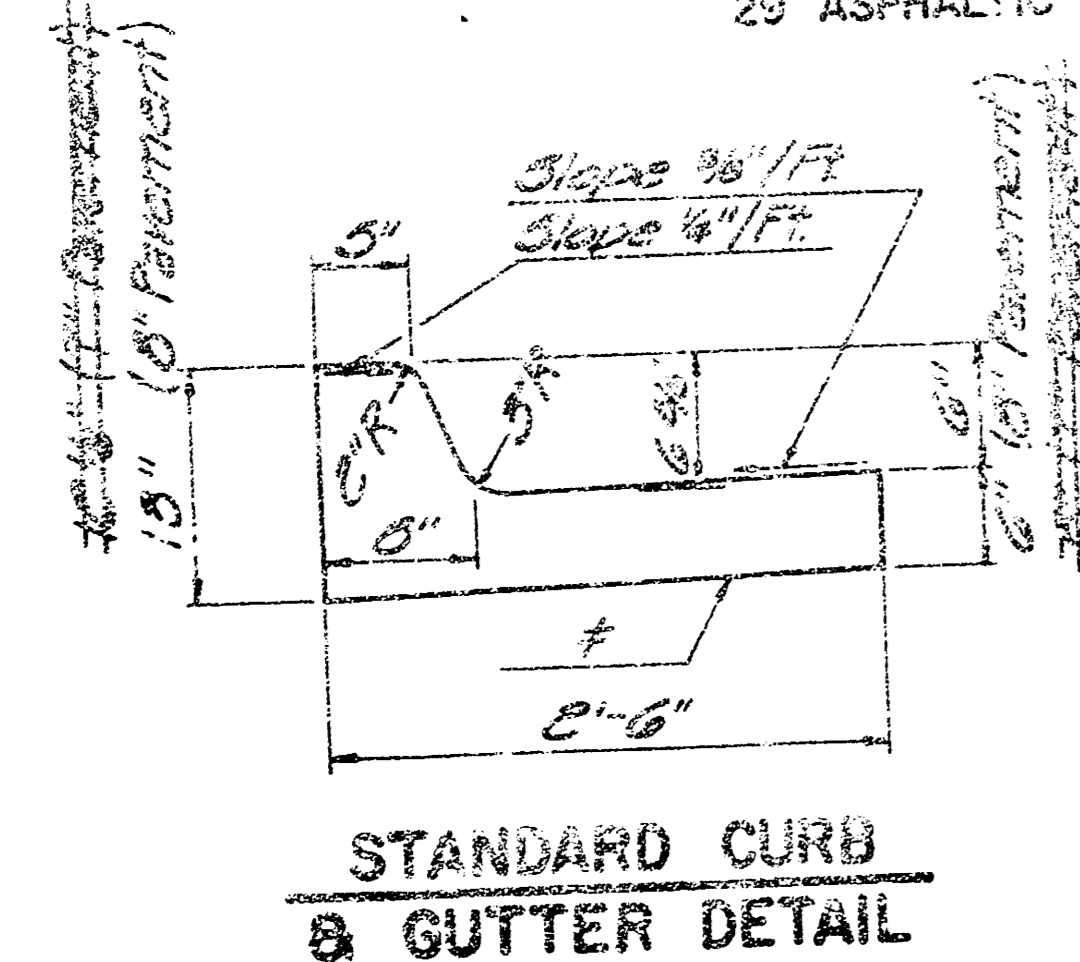
TYPICAL SECTION
41' ASPHALTIC CONCRETE PAVEMENT WITH BITUMINOUS BASE



TYPICAL SECTION
35' ASPHALTIC CONCRETE PAVEMENT WITH BITUMINOUS BASE

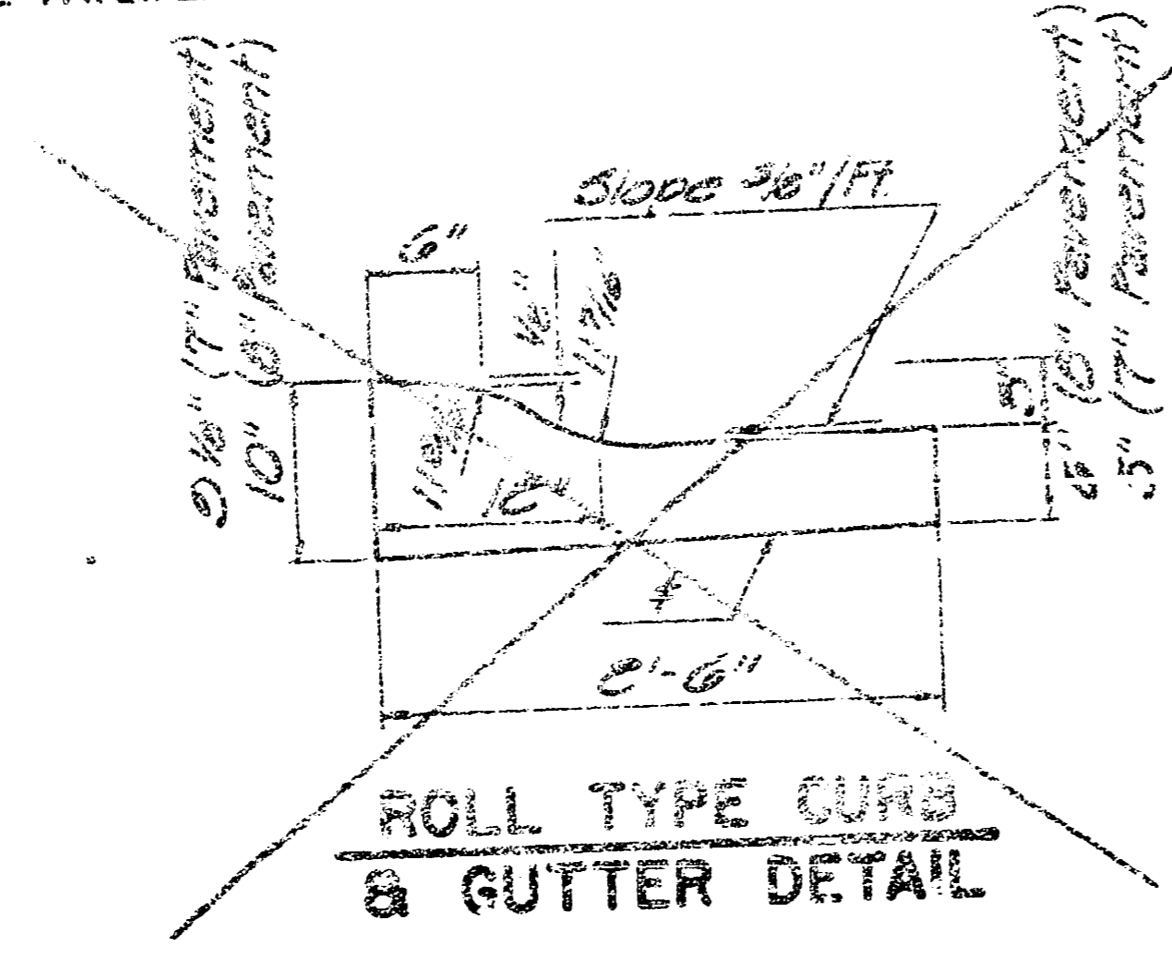


TYPICAL SECTION
29' ASPHALTIC CONCRETE PAVEMENT WITH BITUMINOUS BASE

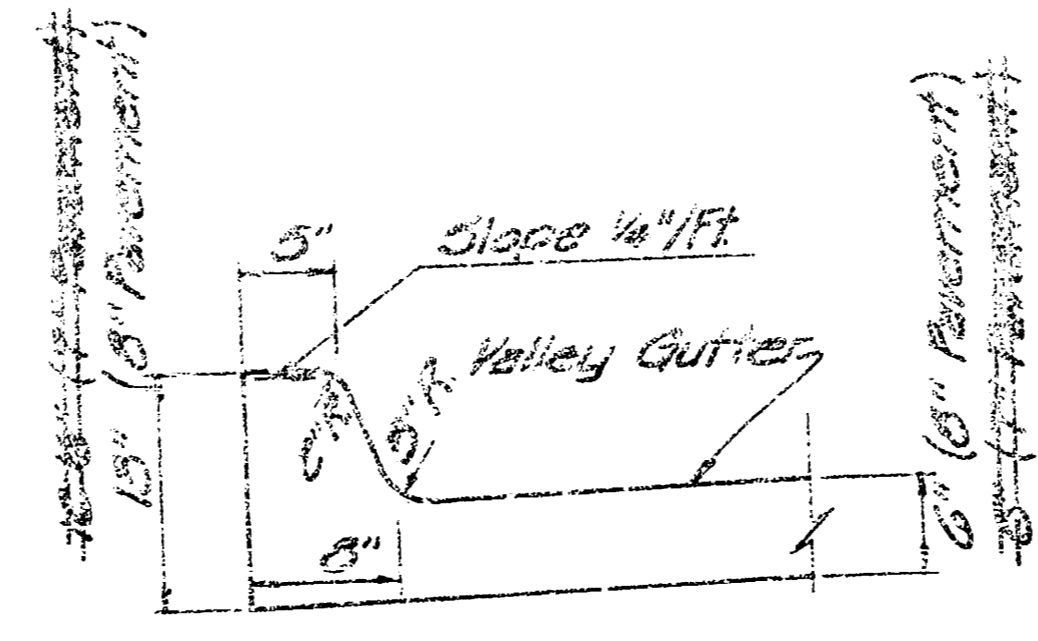


STANDARD CURB & GUTTER DETAIL

* Slope 3/8"/ft (41' Pavement)
* Slope 1/4"/ft (35' Pavement)
* Slope 1/8"/ft (29' Pavement)

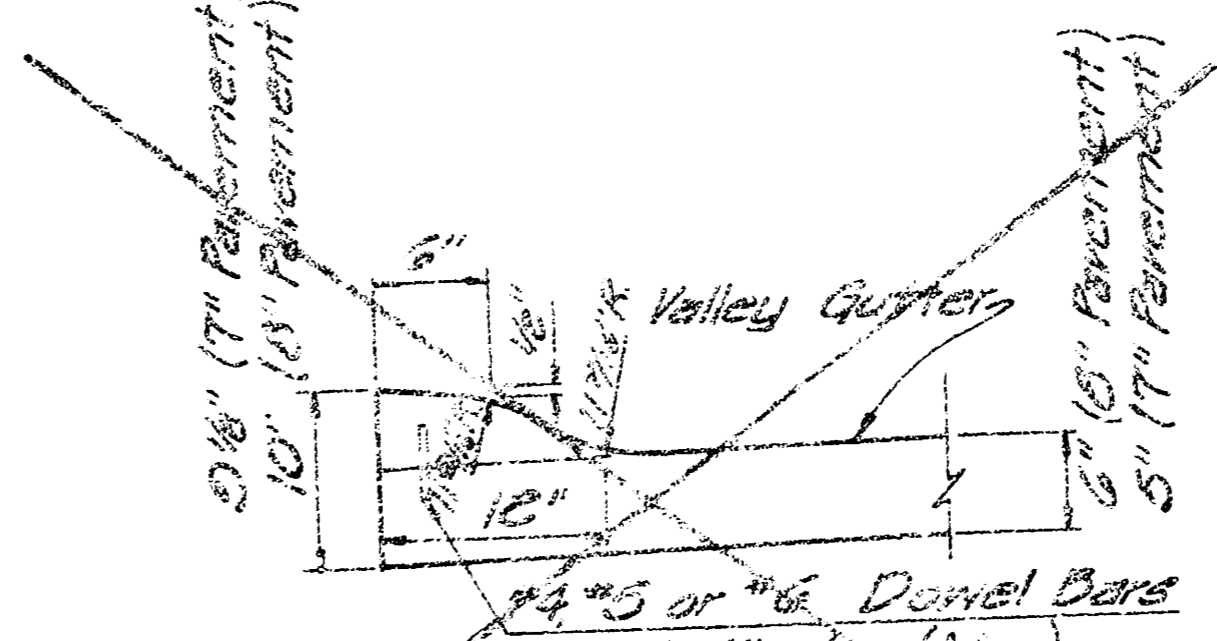


ROLL TYPE CURB & GUTTER DETAIL



STANDARD INTEGRAL CURB & GUTTER DETAIL

Note: Integral Curb shall be poured monolithic with valley gutter.



ROLL TYPE INTEGRAL CURB & GUTTER DETAIL

DETAIL OF TRANSVERSE CONSTRUCTION JOINTS

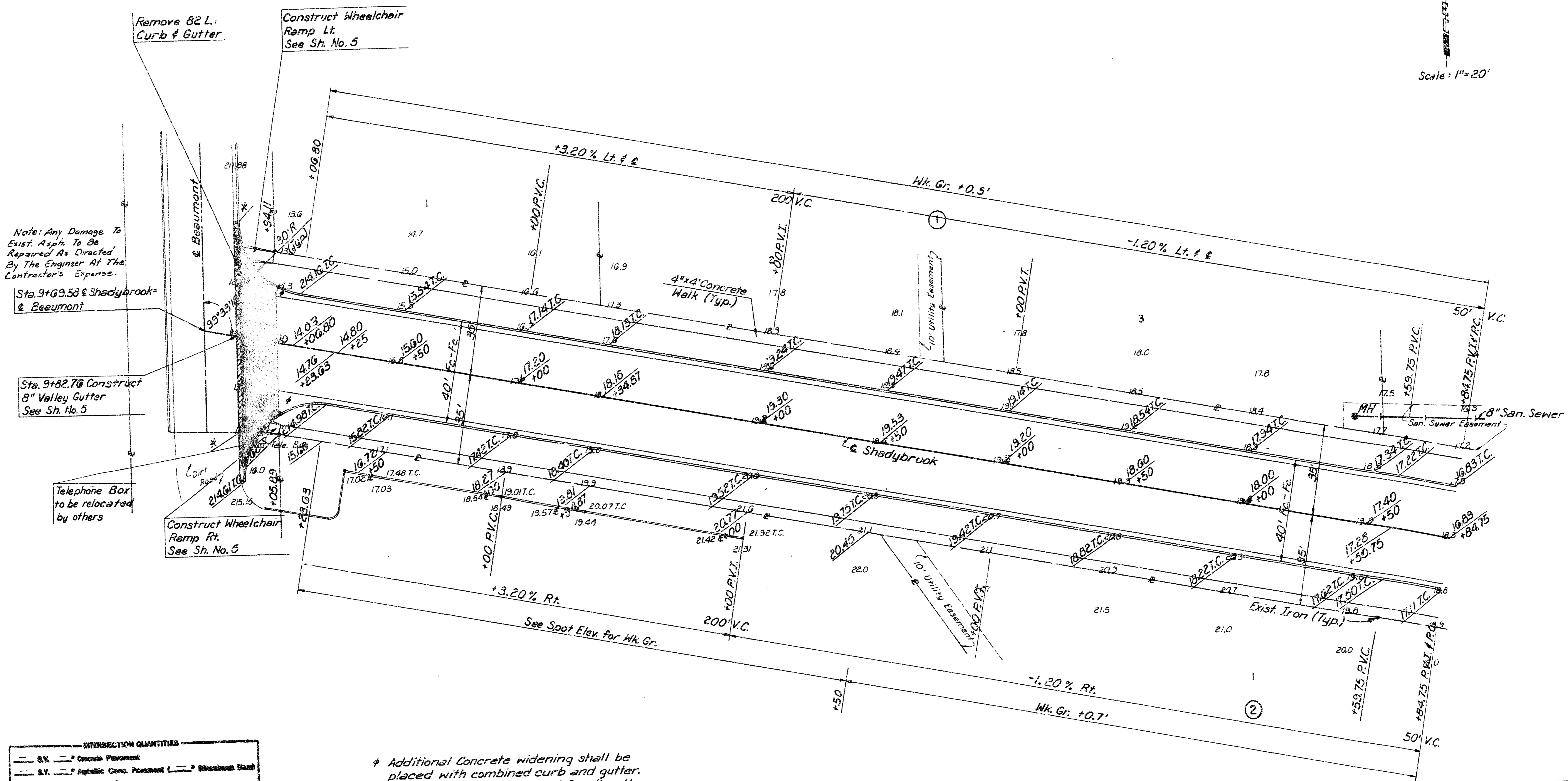
Transverse Construction Joints shall be constructed in flexible base pavements at locations where pavement temporarily ends to facilitate future pavement construction as shown by detail. The cost of constructing the Transverse Construction Joints shall not be measured or paid for directly but shall be included in the bid price for square yards of asphaltic concrete pavement.

- GENERAL NOTES
- A THIN COAT OF EMULSIFIED ASPHALT (ES-1H) SHALL BE APPLIED AT AN APPROXIMATE RATE 2.00 GALLONS PER SQUARE YARD BETWEEN LIFTS OF ASPHALTIC MATERIALS ORDERED BY THE CONTRACTOR. THIS COAT WILL NOT BE PAID FOR DIRECTLY AND SHALL BE CONSIDERED AS NECESSARY TO PRICE BID FOR ASPHALTIC PAVEMENT.
 - REINFORCING BARS FOR CURBS AND GUTTERS SHALL BE PLACED WITH A LAYING MACHINE HAVING SUITABLE GAUGES FOR CURB AND GUTTER. CONSTRUCTION JOINTS IN EACH LIFT SHALL BE STAGGERED A MINIMUM DISTANCE OF 1 FOOT WITH JOINTS IN PRECEDING LIFTS AND SUCH THAT A JOINT WILL BE CONSTRUCTED ON THE PAVEMENT CENTERLINE IN THE TOP LIFT.
 - THE 3" BITUMINOUS BASE UNDER CURBS AND GUTTERS IS TO BE PAID AS CHANGE YARD 3" BITUMINOUS BASE.
 - SIDEWALKS INDICATED IN THE TYPICAL SECTION ARE FOR LOCATION ON THAT SECTION ONLY. SIDEWALKS SHALL BE CONSTRUCTED WHERE SHOWN ON THE PLAN SHEET AS PART OF THIS PROJECT.
 - CONSTRUCTION JOINTS MAY BE CONSTRUCTED IN CURBS BY SAVING WITH AN APPROVED CONCRETE SAW. THE SAW SHALL EXTEND THROUGH THE CURB TO THE PAVEMENT. SAWED CONSTRUCTION JOINTS SHALL HAVE A MAXIMUM SPACING OF 10'.
 - THE CONTRACTOR SHALL BE RESPONSIBLE FOR PROTECTING PROPERTY LINES. THE CONTRACTOR SHALL BE REQUIRED TO RE-ESTABLISH ANY PROPERTY LINES WHICH ARE DAMAGED OR DESTROYED BY HIS CONSTRUCTION OPERATIONS. SUCH IRONS SHALL BE RE-ESTABLISHED BY A LICENSED LAND SURVEYOR OR A LICENSED PROFESSIONAL ENGINEER IN ACCORDANCE WITH APPLICABLE STATE LAWS.
 - NO MORE THAN 4-25' DRIVEWAYS APPROACHES OR THE EQUIVALENT TO BE CONSTRUCTED.

No.	Revision	By	Date
CITY OF WICHITA, KANSAS			
TYPICAL SECTIONS			
STREET IMPROVEMENTS			
PROJ. NO. 472-75-245-81114 -000-000-001			
PROFESSIONAL ENGINEERING CONSULTANTS, P.A.			
ENGINEERS WICHITA, KANSAS			
Designed by	Job No. E2218	Sheet	2/11
Drawn by	Date June, 1932		

ORIGINAL (KEEP)

Scale: 1" = 20'



INTERSECTION QUANTITIES

— S.Y. —	Concrete Pavement
— S.Y. —	Asphaltic Conc. Pavement (—) Bituminous Sand
— S.Y. —	Bituminous Stone
— L.F. —	Combined Curb & Gutter
— L.F. —	Integral Curb
— S.F. —	4" Wheelchair Ramp
— S.F. —	4" Walk
— C.Y. —	Excavation
— C.Y. —	Compacted Fill
— Lbs. —	Reinforcing Steel
— S.Y. —	Manipulation
— Tons —	Line of Concrete
— S.Y. V.B. —	Concrete & Asphaltic Concrete Base

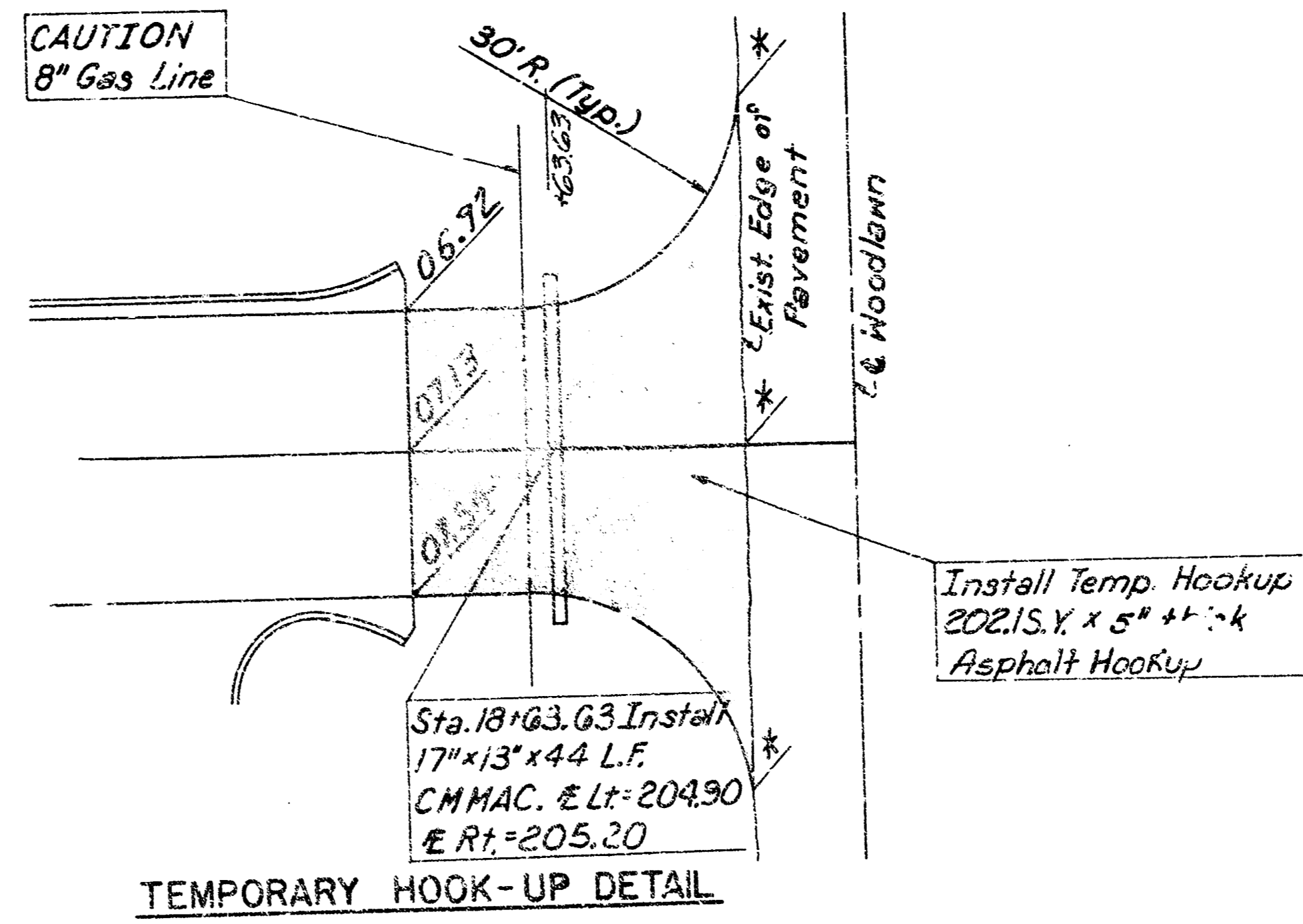
* Additional Concrete widening shall be placed with combined curb and gutter. This work shall not be paid for directly, but shall be considered subsidiary to the bid item "Combined Curb and Gutter."

* Match Existing

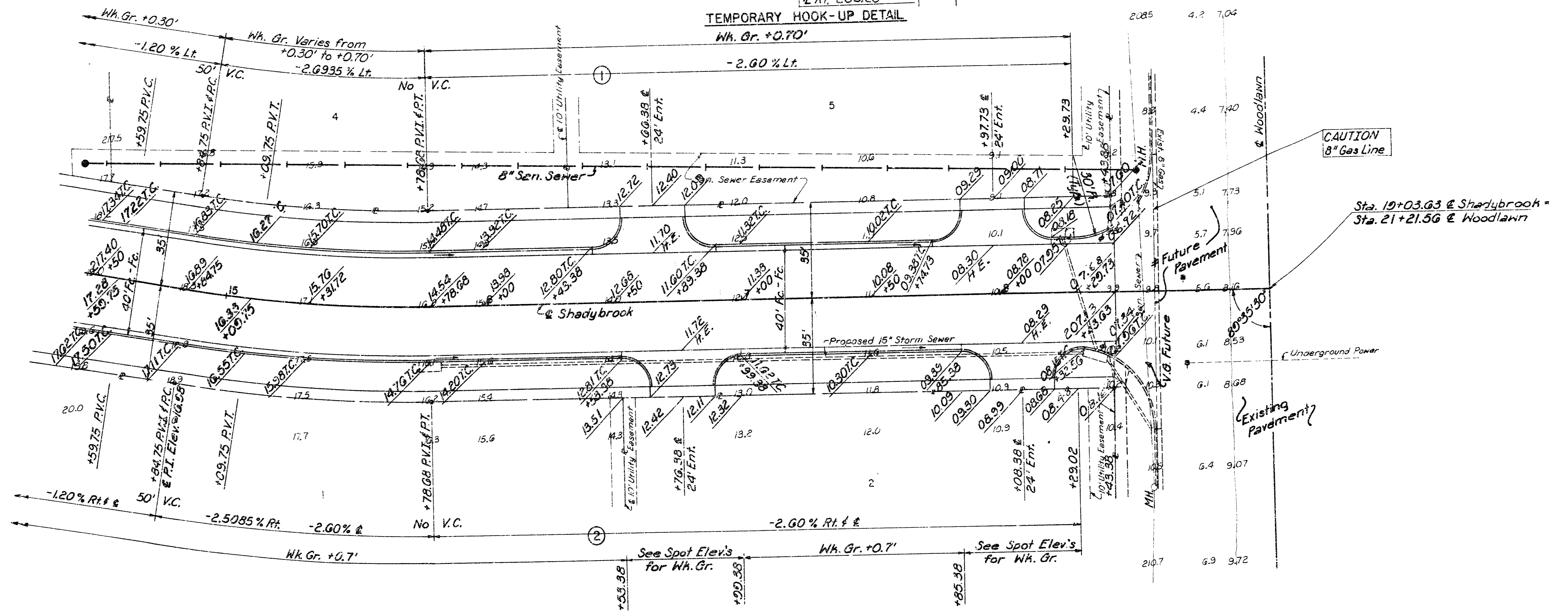
No.	Revision	By	Date
CITY OF WICHITA, KANSAS SHADYBROOK STA. 9+83.39 TO STA. 14+50			
PROFESSIONAL ENGINEERING CONSULTANTS, P.A. <small>ENGINEERS WICHITA, KANSAS</small>			
Designed by	BER	Job No.	82213
Drawn by	JGF	Date	June, 1982
		Sheet	3 / 11

CURVE DATA BASED ON C RADIUS $\Delta/2 = 4^{\circ} 46' 39''$					
STATION	C ARC LENGTH	CHORD LENGTH		C DEFLECTION ANGLE	C TOTAL DEFLECTION
		8' OFF LEFT FACE CURB	8' OFF RIGHT FACE CURB		
14+64.75	—	—	—	0°00'00"	0°00'00"
15+00.00	15.25'	14.48'	16.00'	0°46'31"	0°46'31"
15+25.00	25.00'	23.76'	26.24'	1°16'18"	2°02'49"
15+50.00	25.00'	23.76'	26.24'	1°16'18"	3°19'07"
15+75.00	25.00'	23.76'	26.24'	1°16'18"	4°35'25"
15+78.68	3.68'	3.57'	3.86'	0°11'14"	4°46'39"

Curve Data
 $\Delta = 9^{\circ} 33' 18''$
 $D = 10^{\circ} 10' 21''$
 $R = 563.25'$
 $T = 4^{\circ} 07'$
 $L = 33.93'$



Scale: 1"=20'



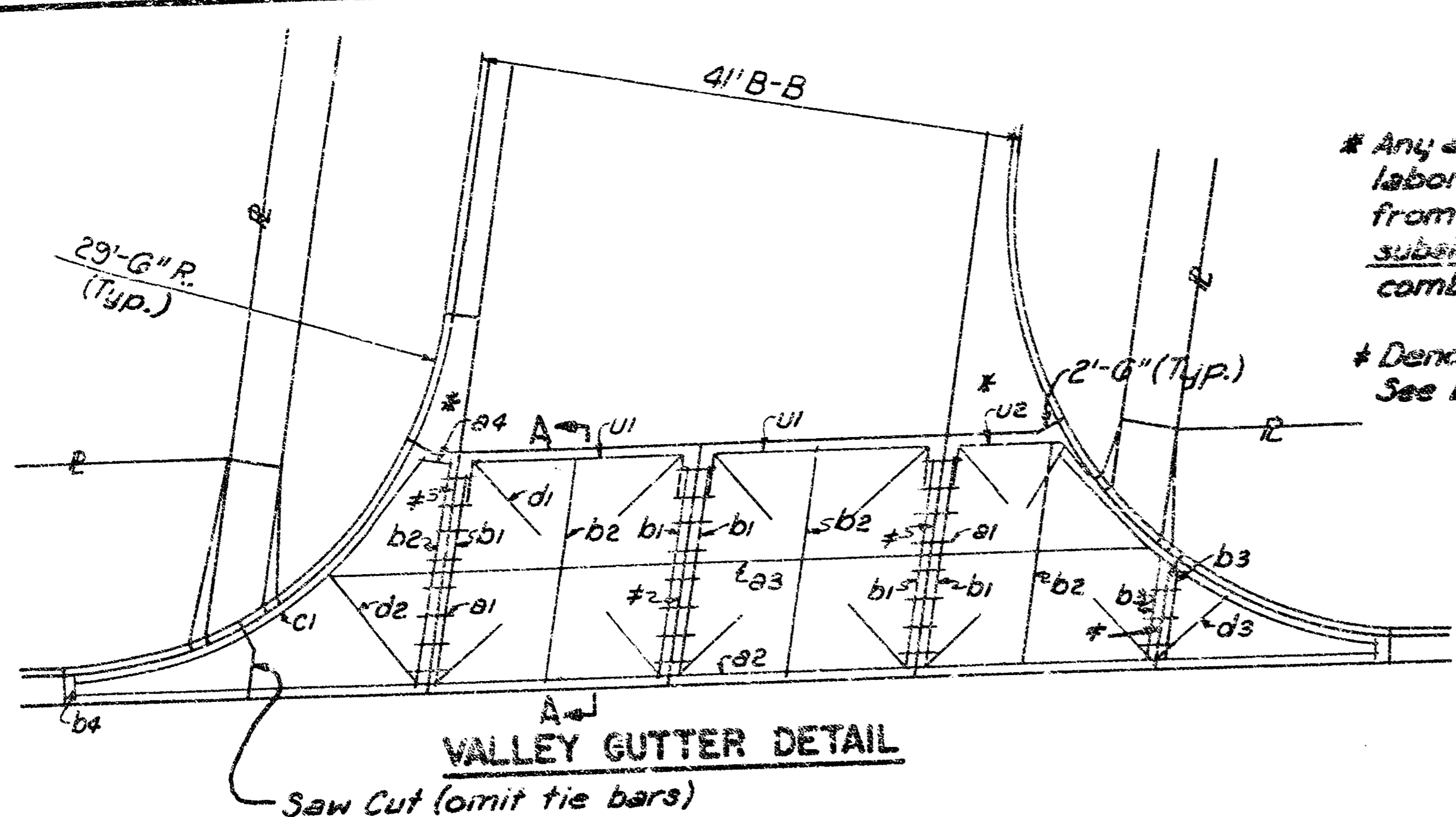
See Sheet No. 5 for entrance details

* Additional concrete to be placed with combined Curb and Gutter. This work shall not be paid for directly, but shall be considered subsidiary to the bid item "Combined Curb and Gutter."

* Match Existing

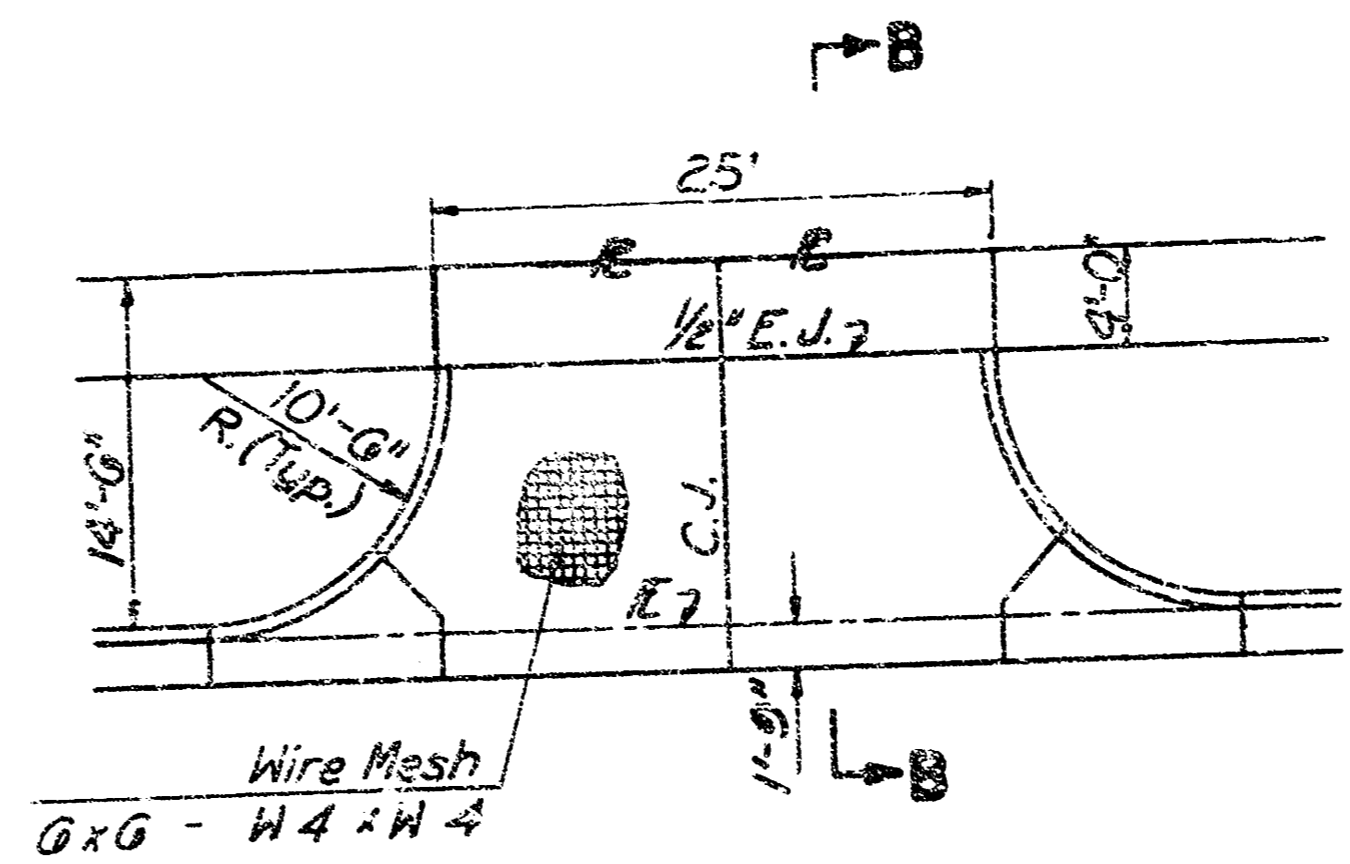
* If the proposed improvement to Woodlawn is not complete, a temporary "hook-up" shall be constructed. See detail this sheet. Quantities for this work have been computed, but may be underrun 100%.

Revision	By	Date
CITY OF WICHITA, KANSAS SHADYBROOK STA. 14+50 TO STA. 16+43.63		
PROFESSIONAL ENGINEERING CONSULTANTS, P.A. ENGINEERS WICHITA, KANSAS		
Designed by BER	Job No. 82218	Sheet 4 of 11
Drawn by JGP	Date June, 1982	

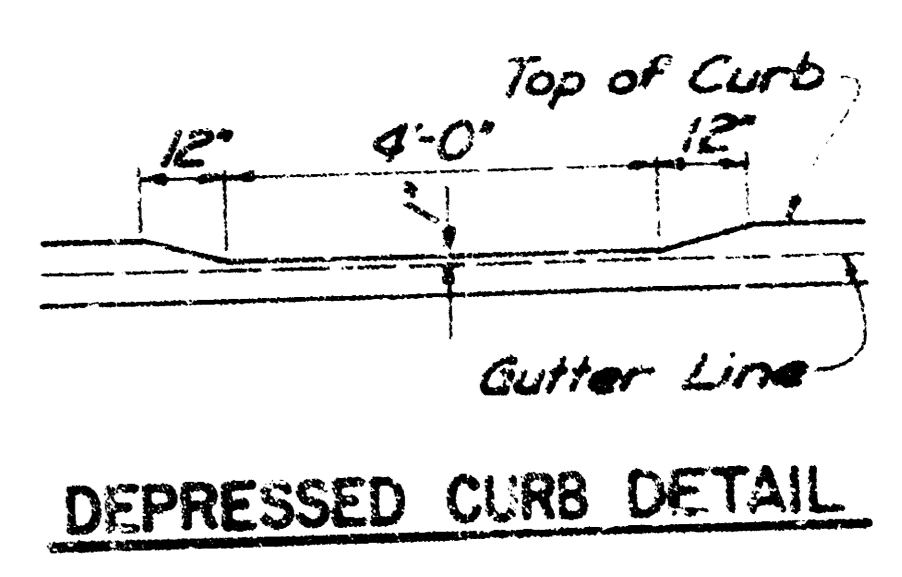
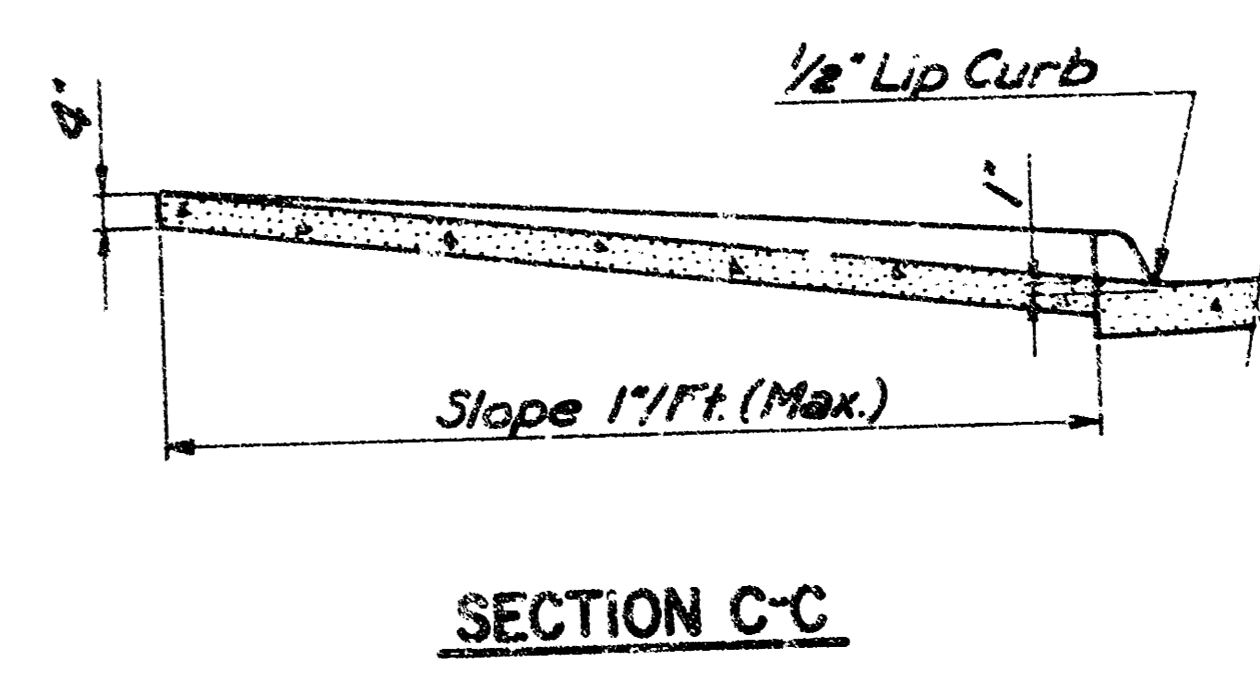
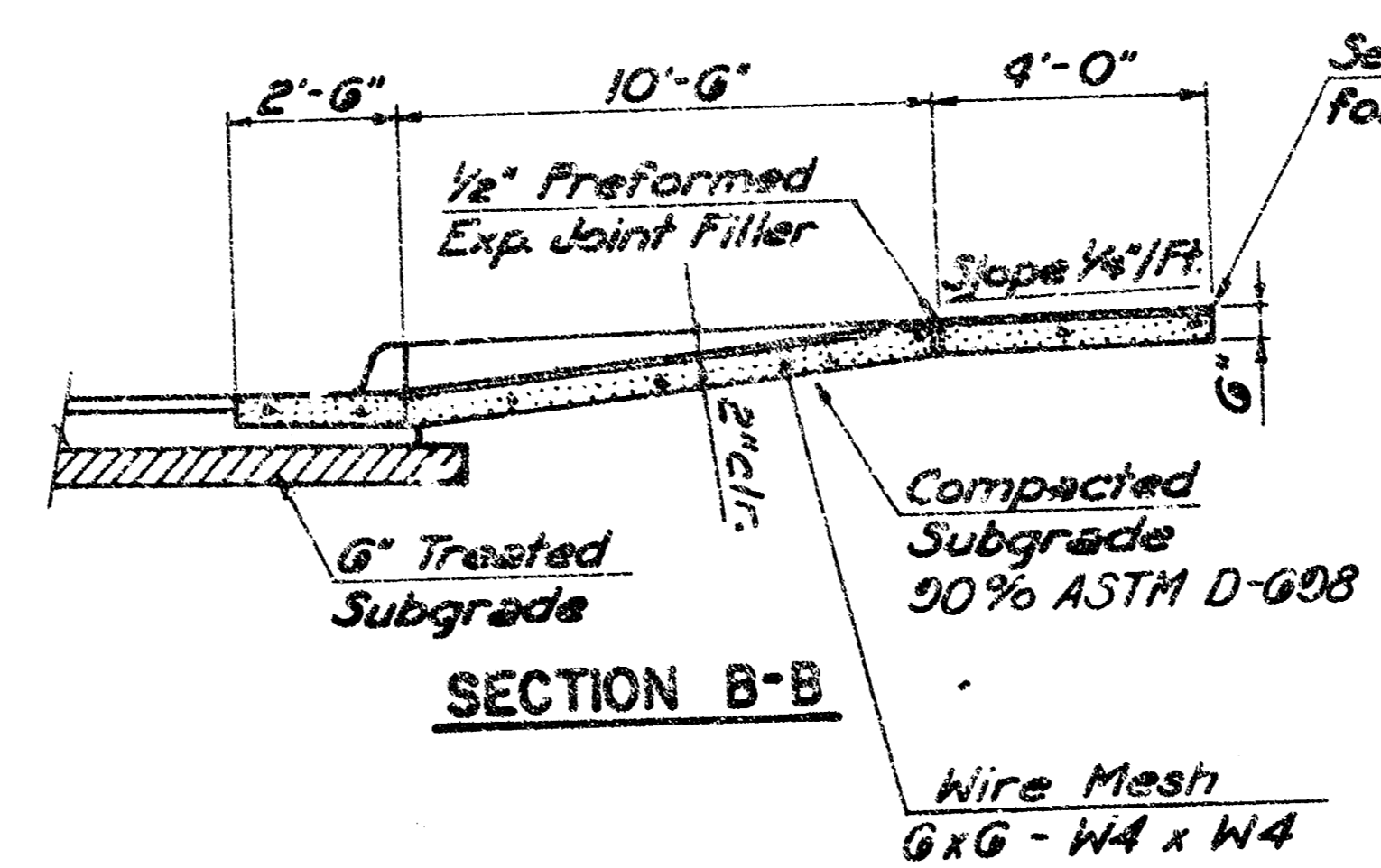
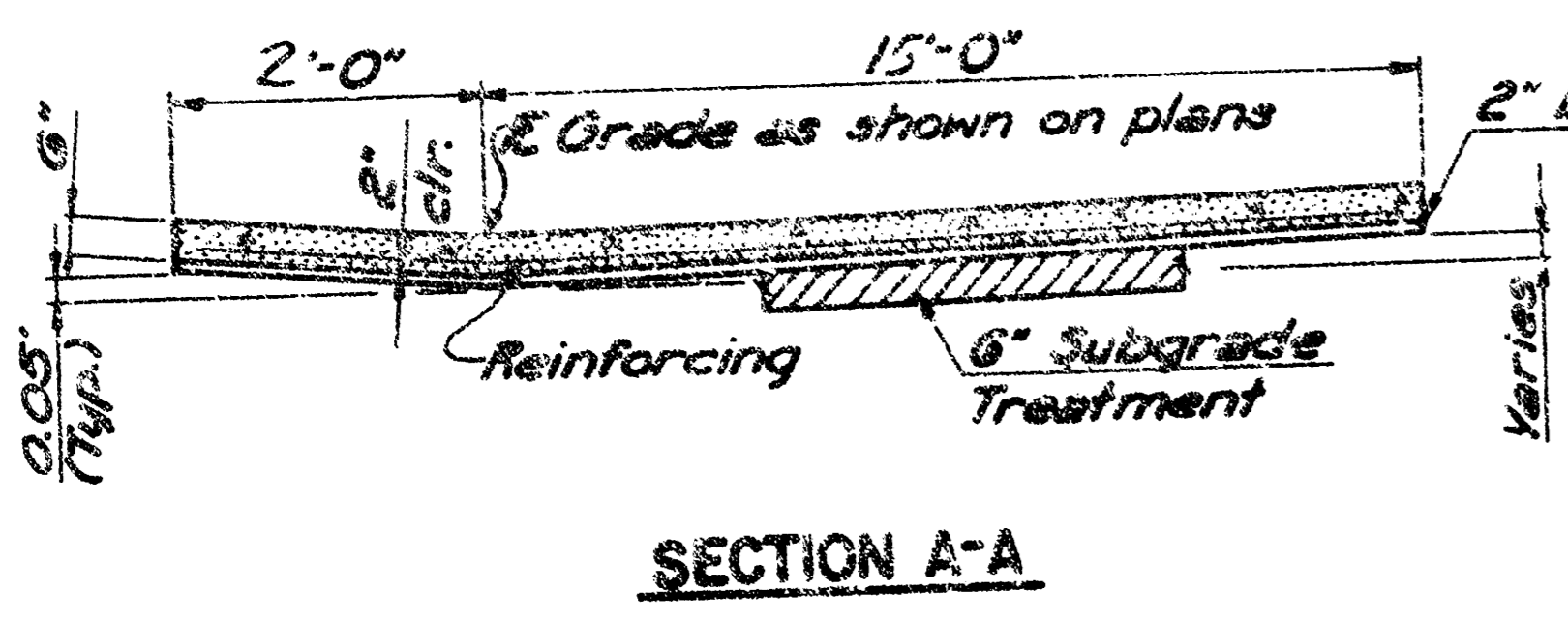
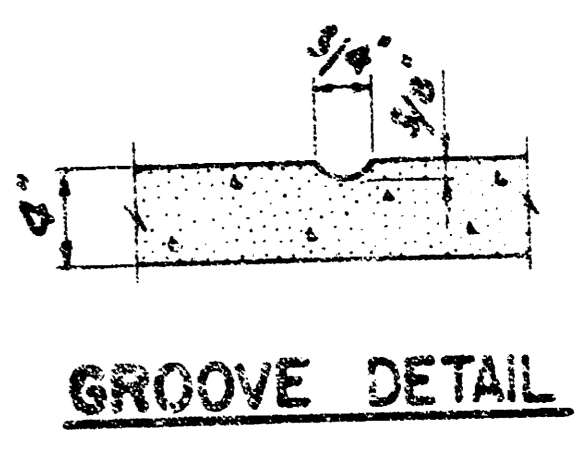
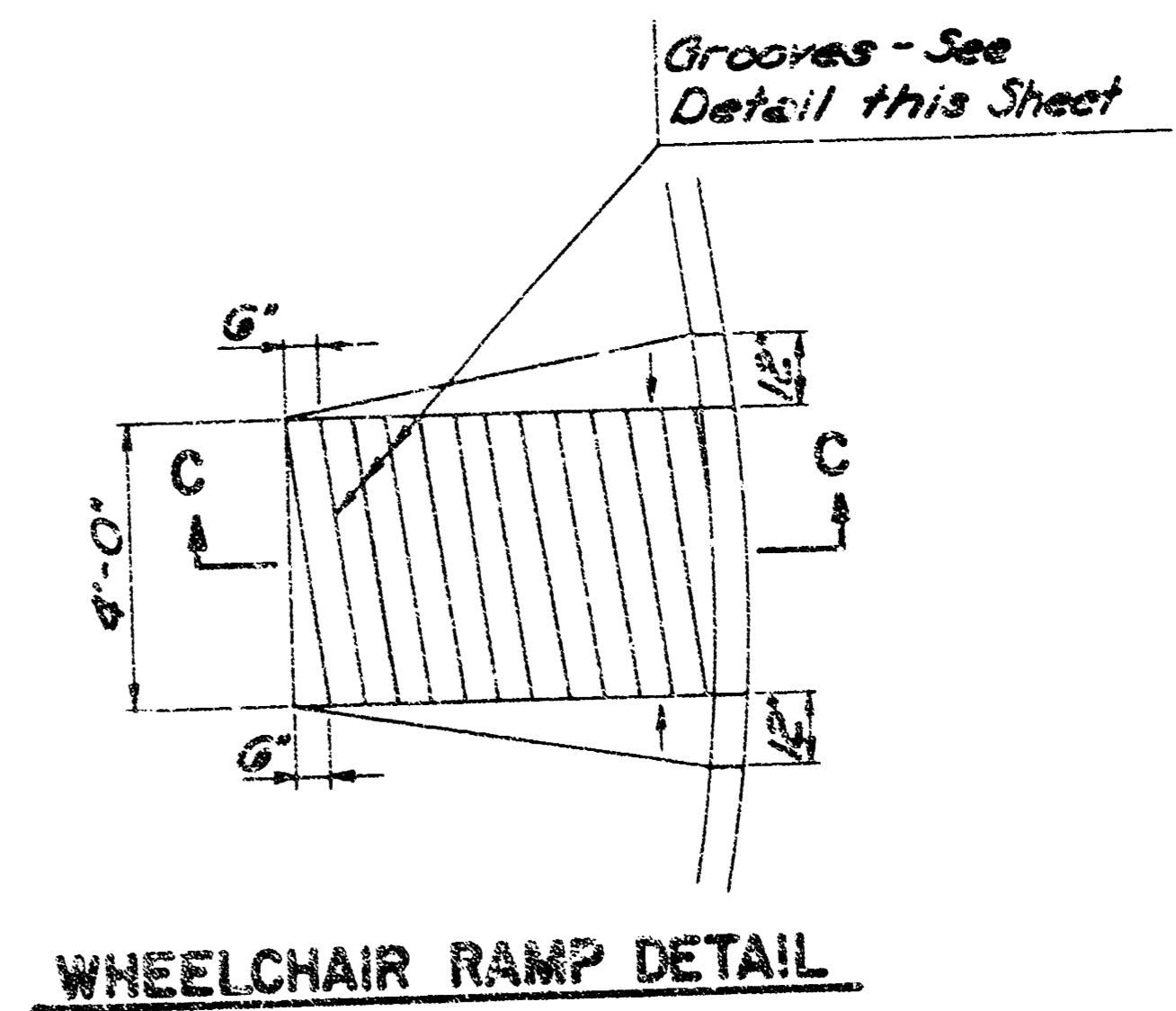


* Any additional materials or labor required due to flares from typical section shall be subsidiary to base bid for combined Curb & Gutter.

* Denotes Construction Joint, See Details this sheet.



Note: Shall Gutter through Drive Opening should be paid for as S.F. 6" Drive.

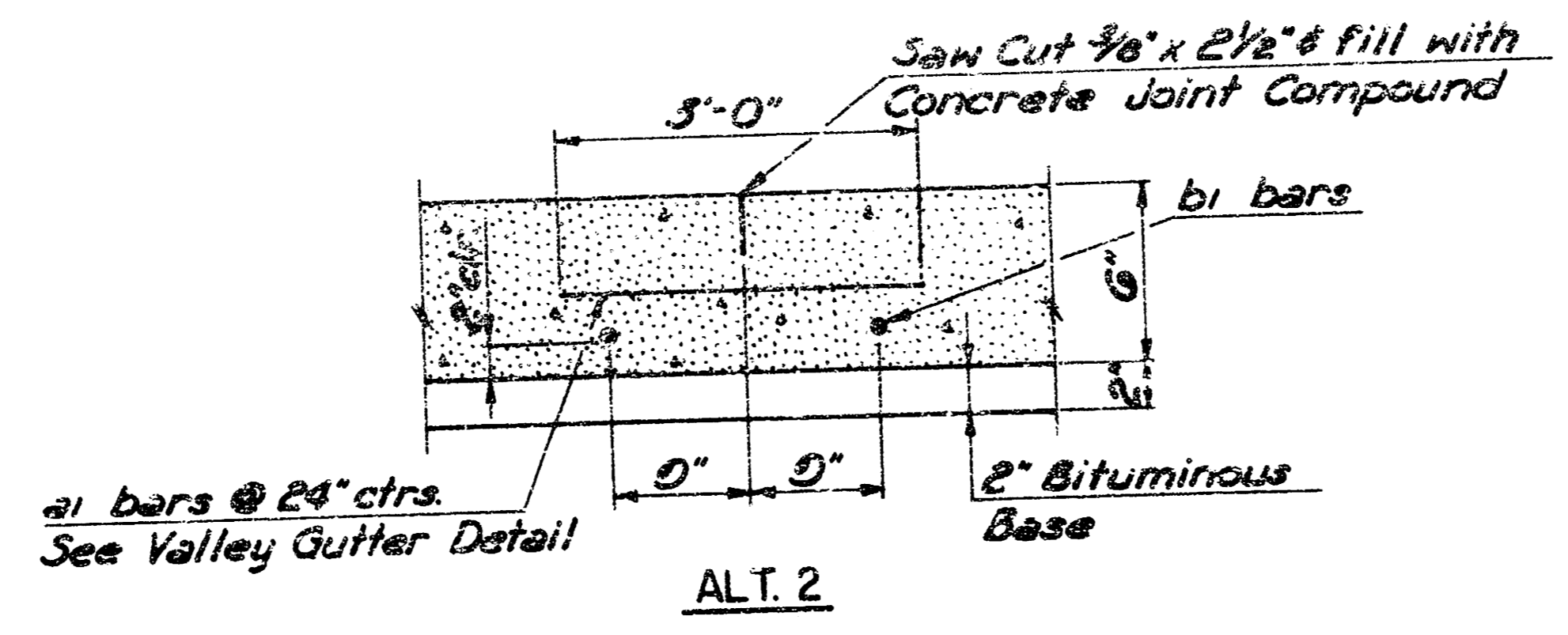
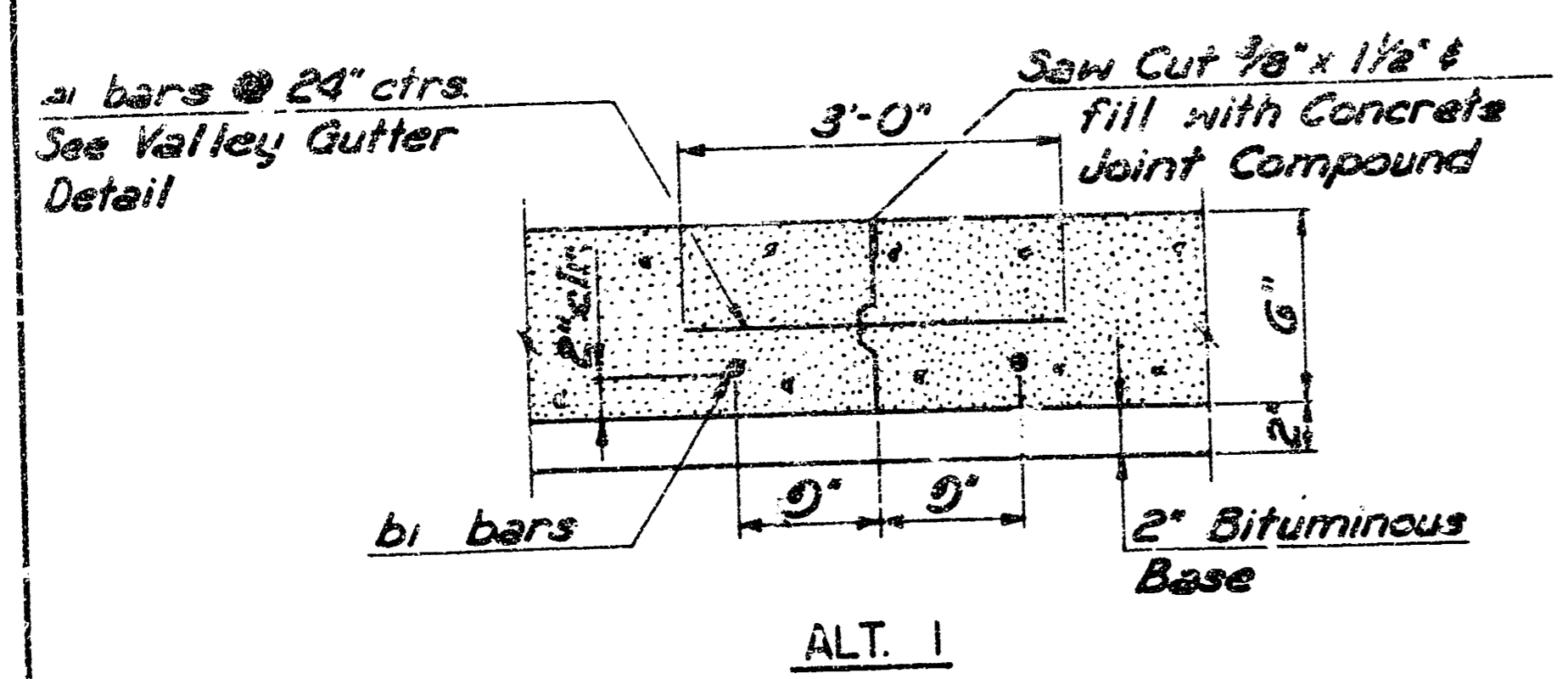
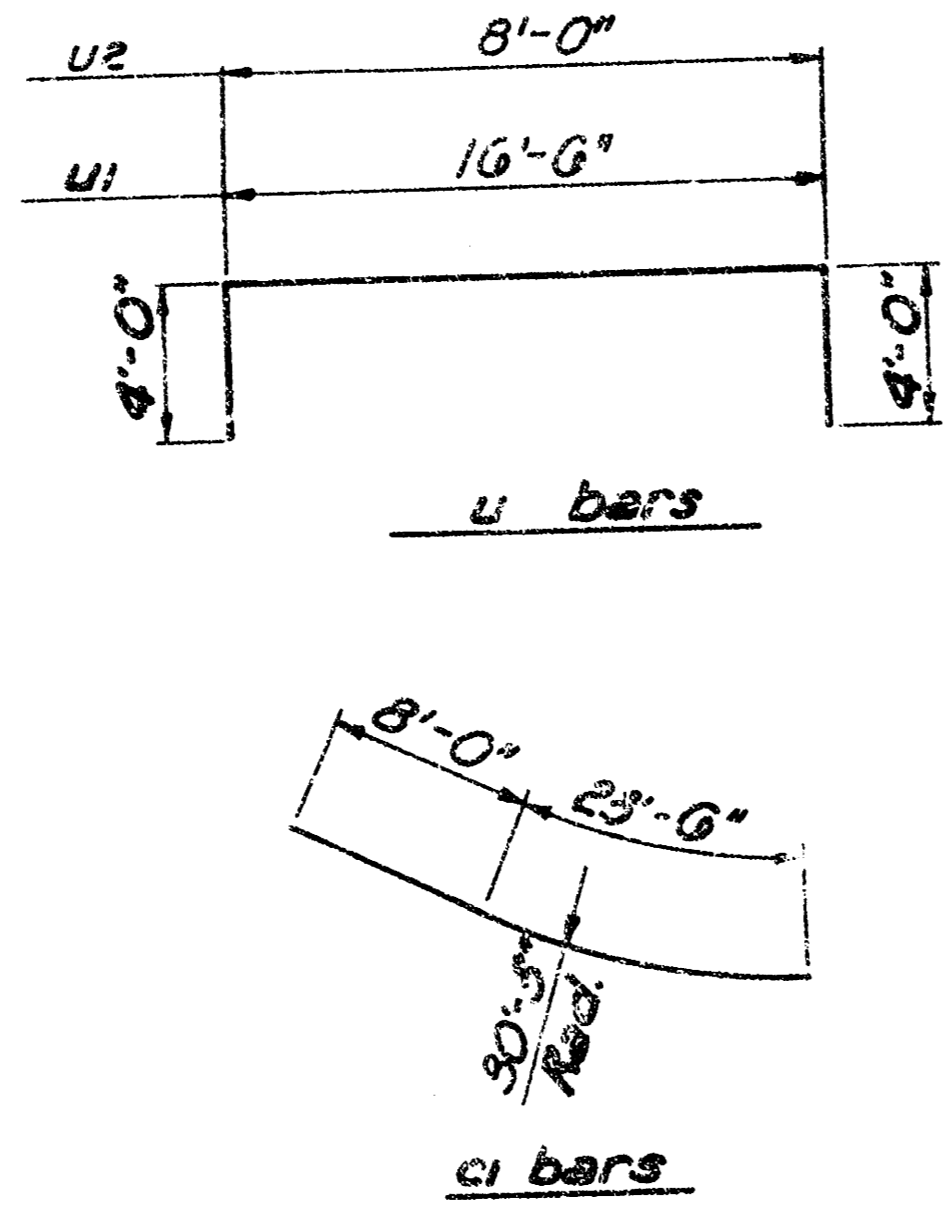


Additional excavation and/or compaction required for drive construction shall not be paid for directly, but shall be considered subsidiary to the bid item "6" Concrete Pavement."

TYPICAL WHEELCHAIR RAMP DETAILS

Bar	No.	Size	Length
a1	27	#6	31'-0"
a2	1	#6	2'-0"
a3	1	#6	2'-0"
a4	1	#6	2'-0"
b1	5	#6	10'-0"
b2	4	#6	10'-0"
b3	2	#6	8'-0"
b4	2	#6	2'-0"
c1	2	#6	31'-0"
d1	12	#6	6'-0"
d2	1	#6	11'-0"
d3	1	#6	7'-0"
u1	2	#6	24'-0"
u2	1	#6	16'-0"

Reinf. Steel = 861.4 Lbs.

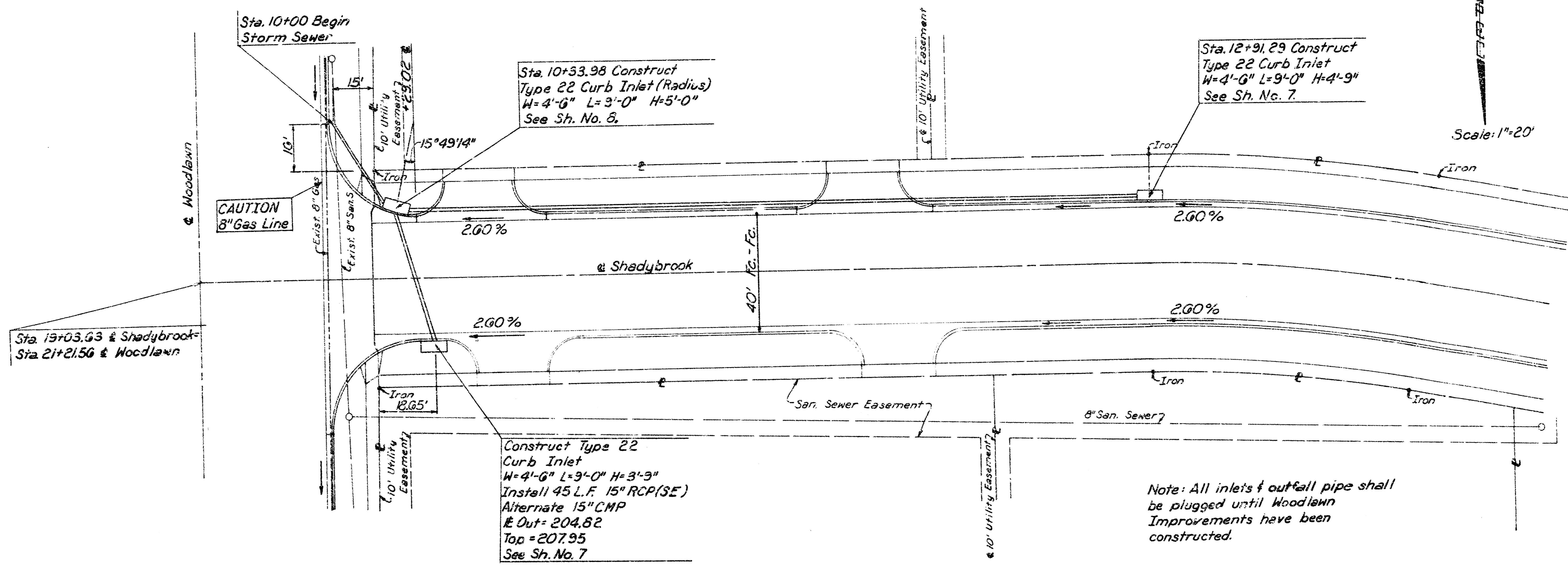


CONSTRUCTION JOINT DETAILS

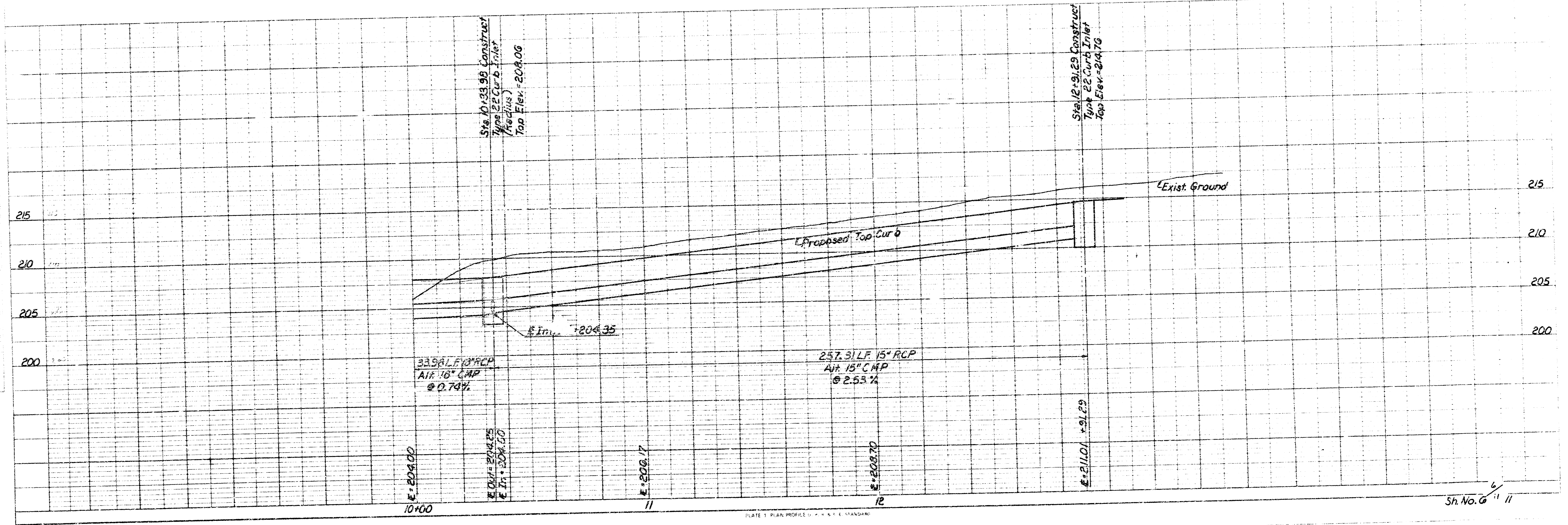
Revision		By	Date
CITY OF WICHITA, KANSAS PAVING DETAILS STREET IMPROVEMENTS			
PROJ. NO. 472-76-245		-000-000-001	
PROFESSIONAL ENGINEERING CONSULTANTS, P.A. ENGINEERS WICHITA, KANSAS			
Designed by	Sub No. 82218	Sh. 5/11/11	
Drawn by	Date JUL 28, 1982		

Original (KEEP)

NOTE: TYPE 22 INLETS AS SHOWN ON THESE PLANS MAY BE SET BACK OF THE CURB SIMILAR TO CITY STANDARD TYPE 1A INLETS WITH THE APPROVAL OF THE ENGINEER.

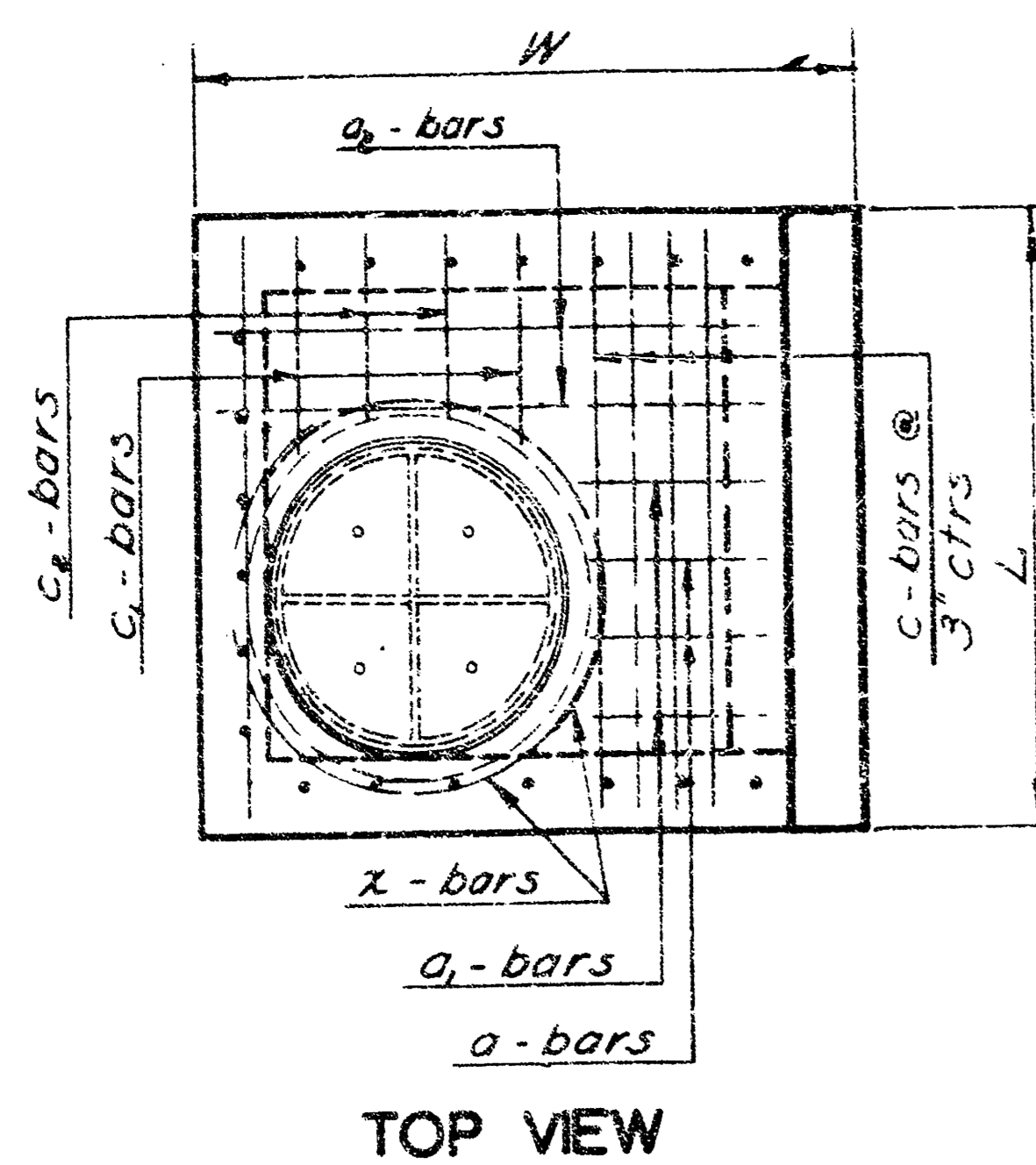


Scale: 1"=20'

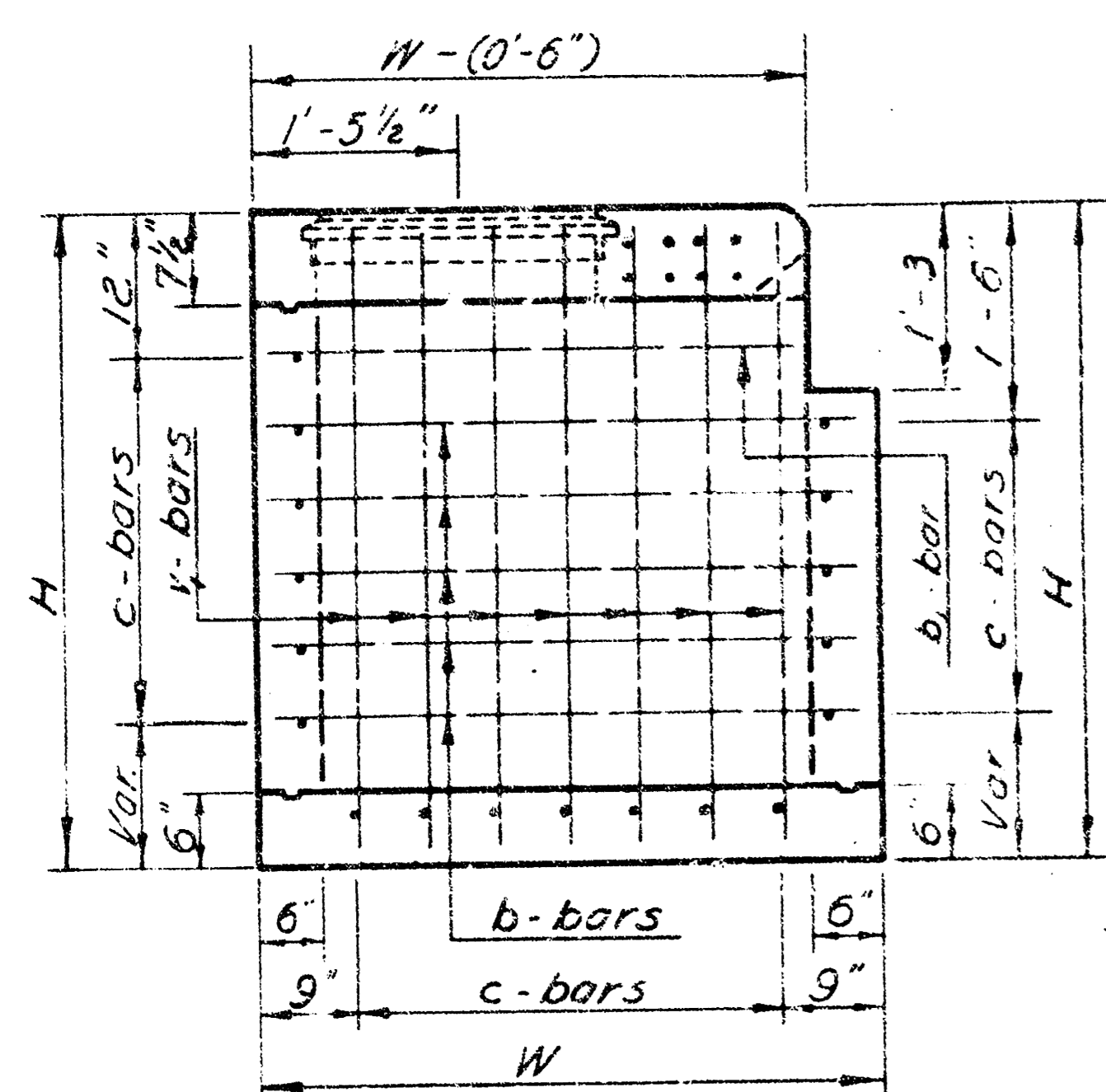


PROFILE

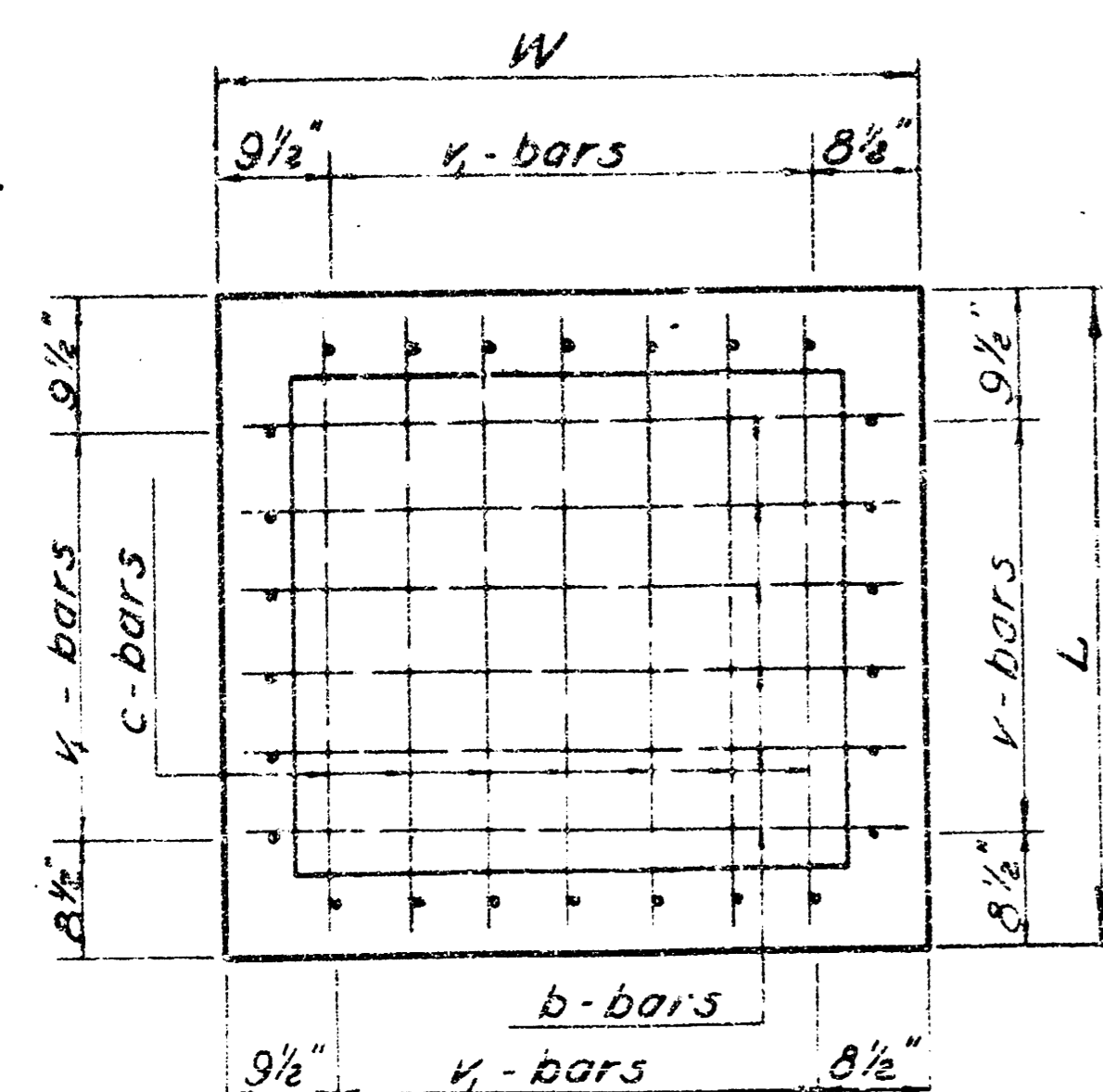
FHWA NO.	STATE	PROJECT NO.	YEAR	SHEET TOTAL
7	KANSAS		197	NO. SHEETS



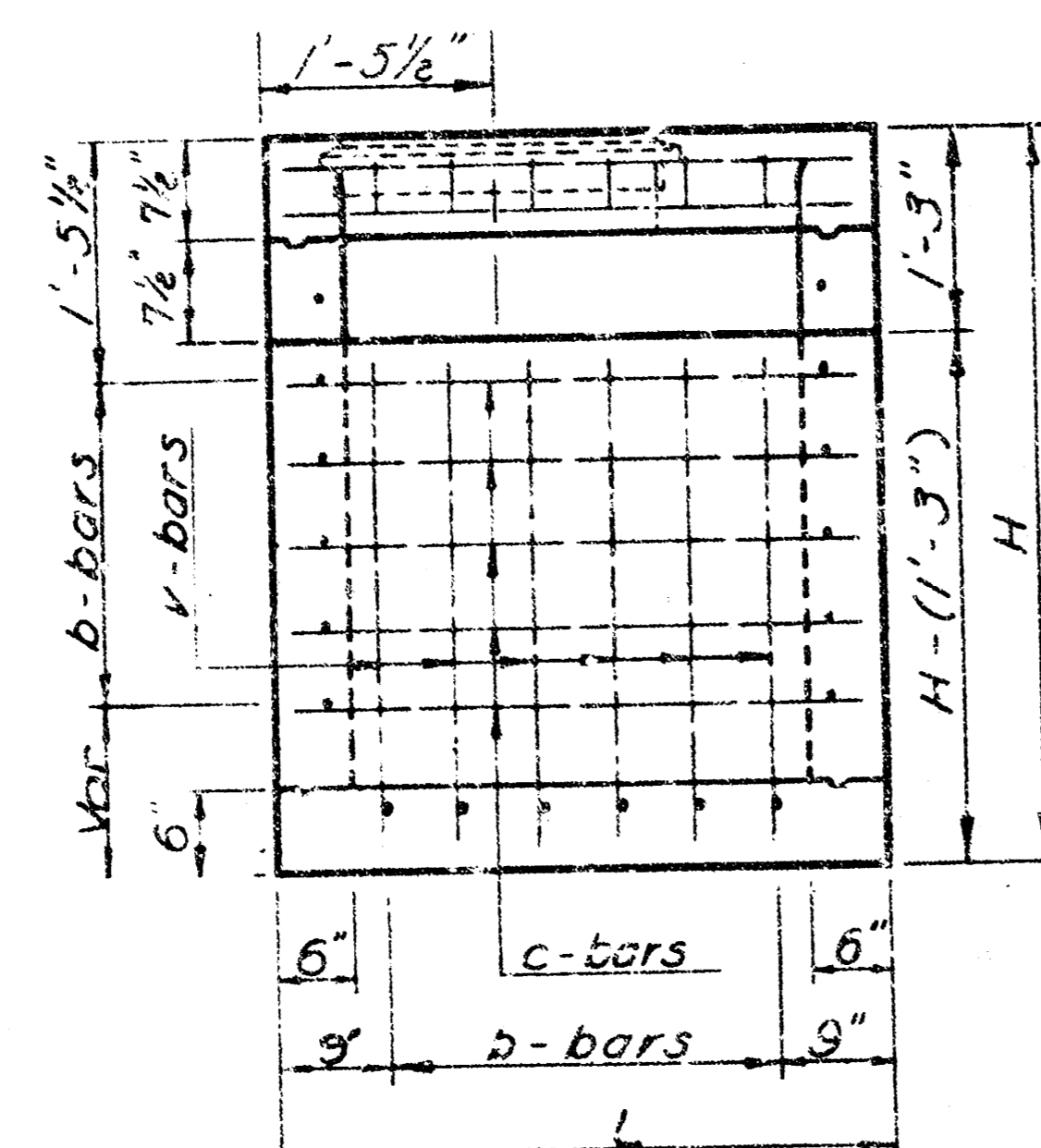
TOP VIEW



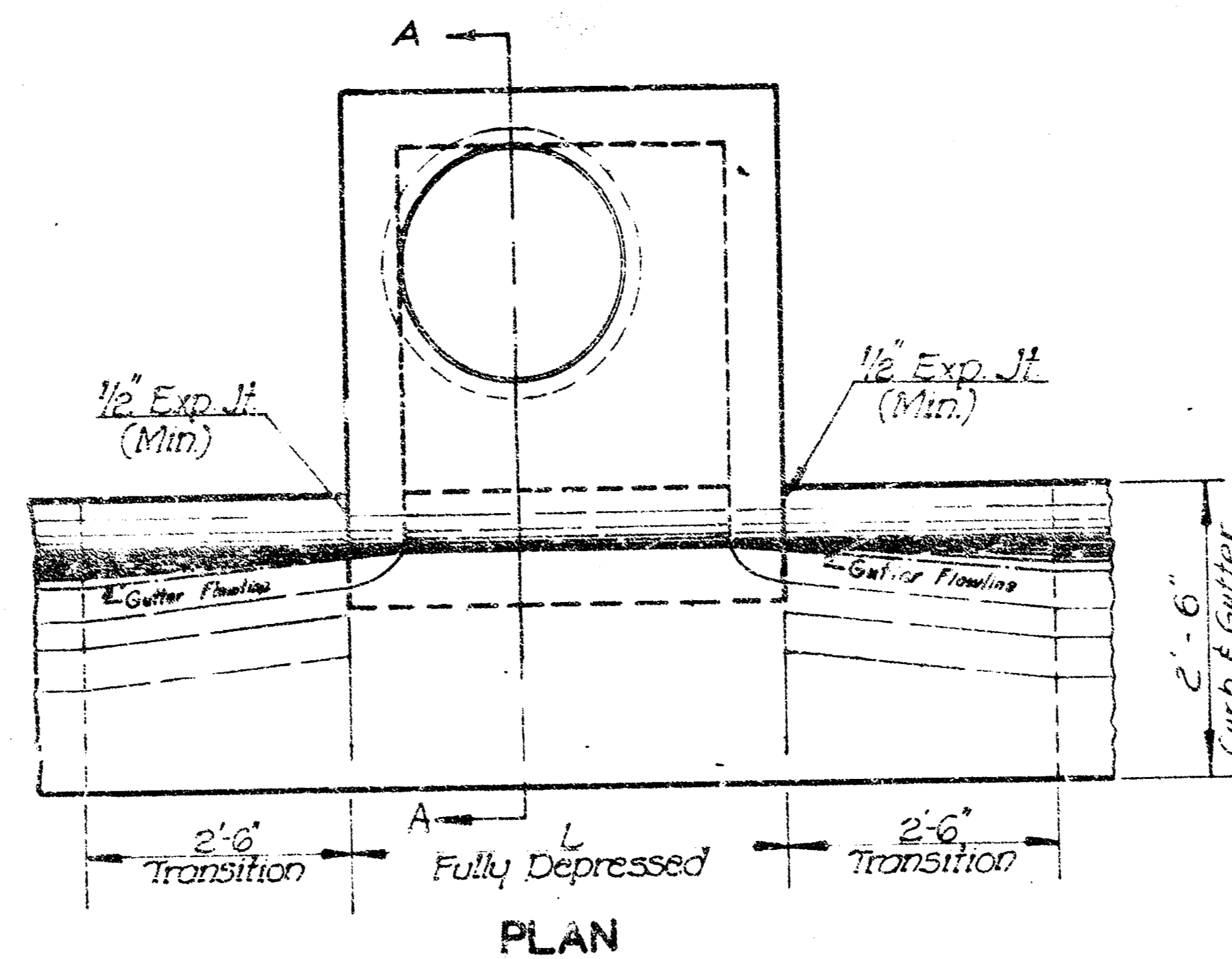
SIDE VIEW



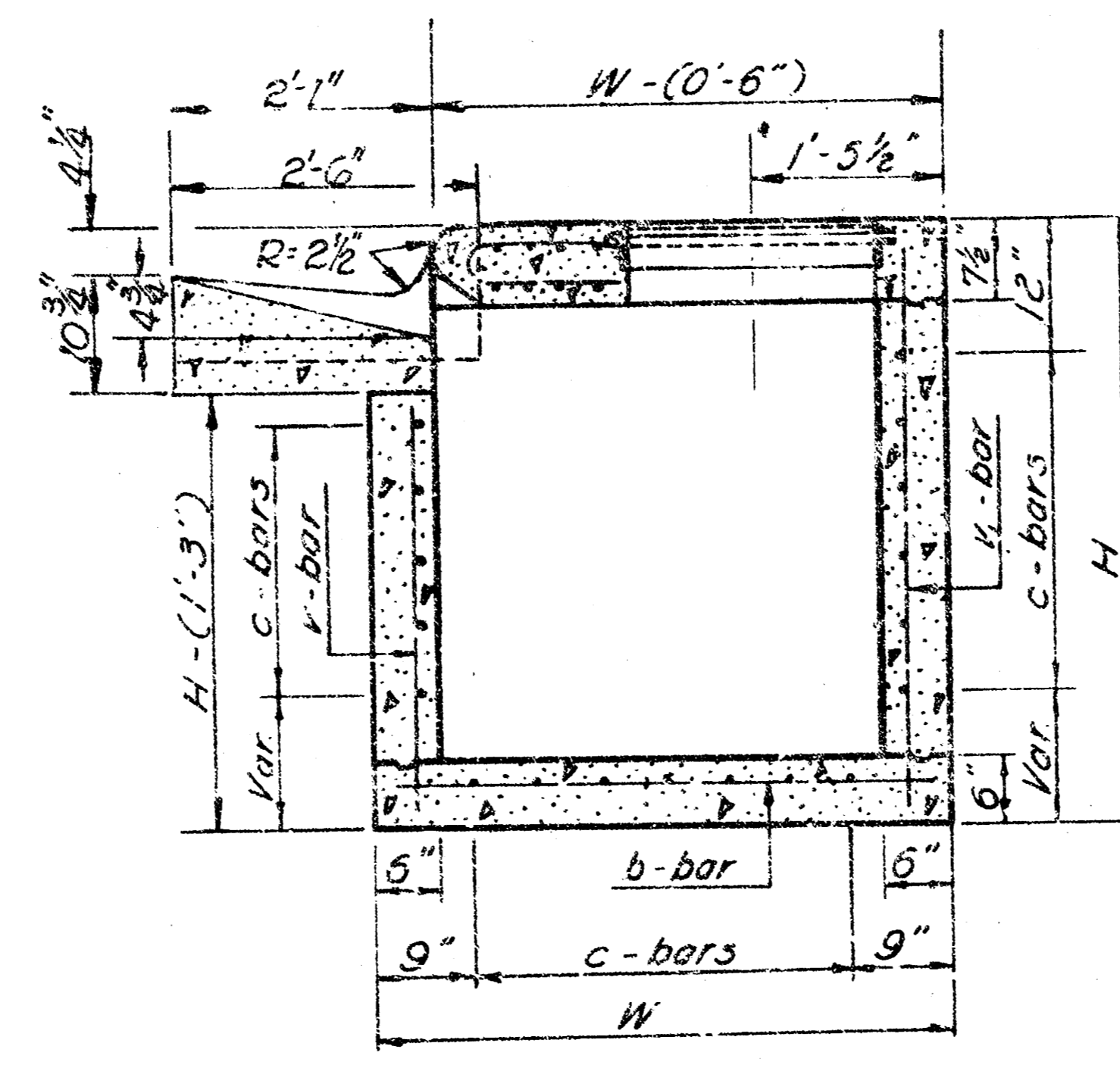
BOTTOM VIEW



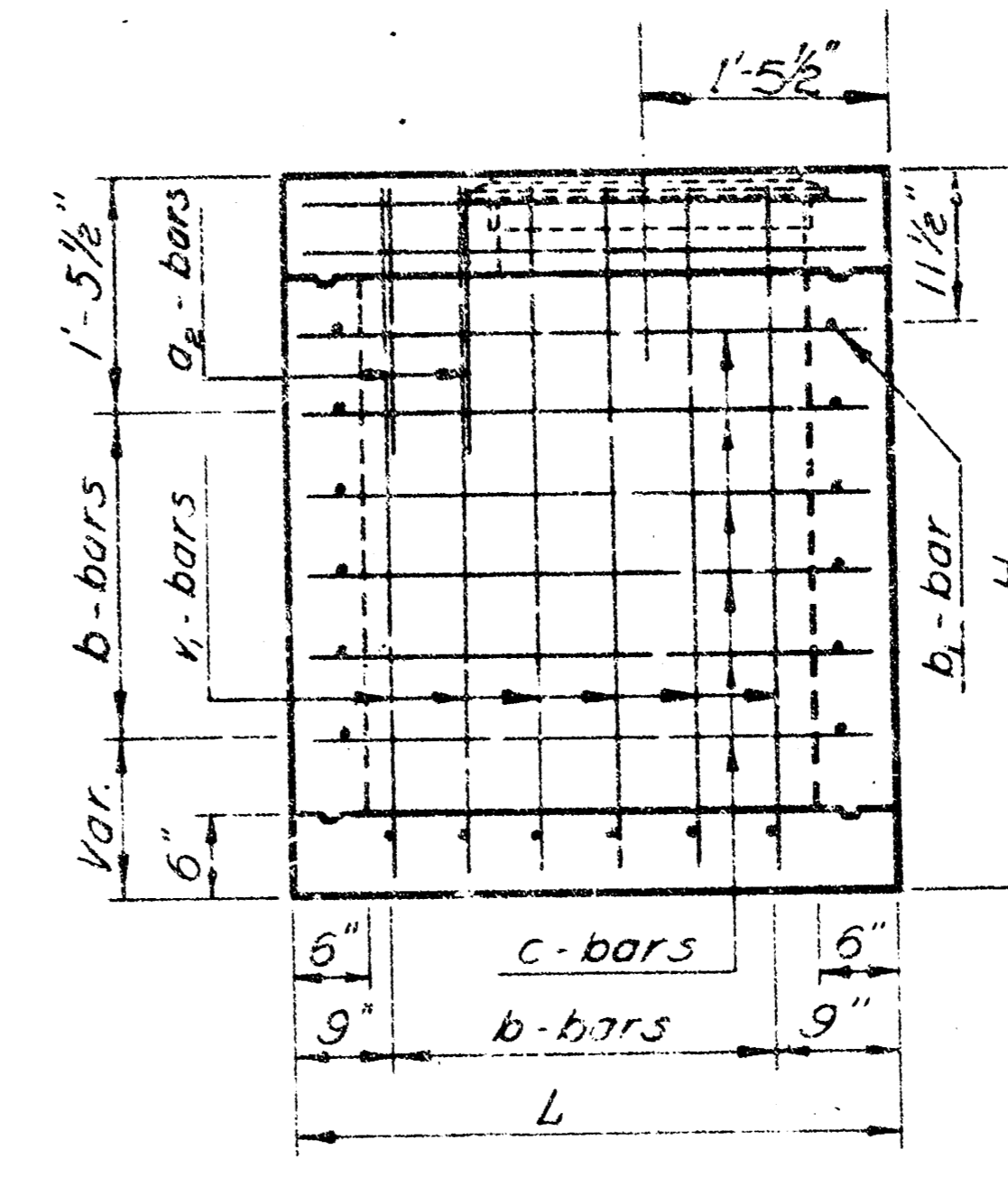
FRONT VIEW



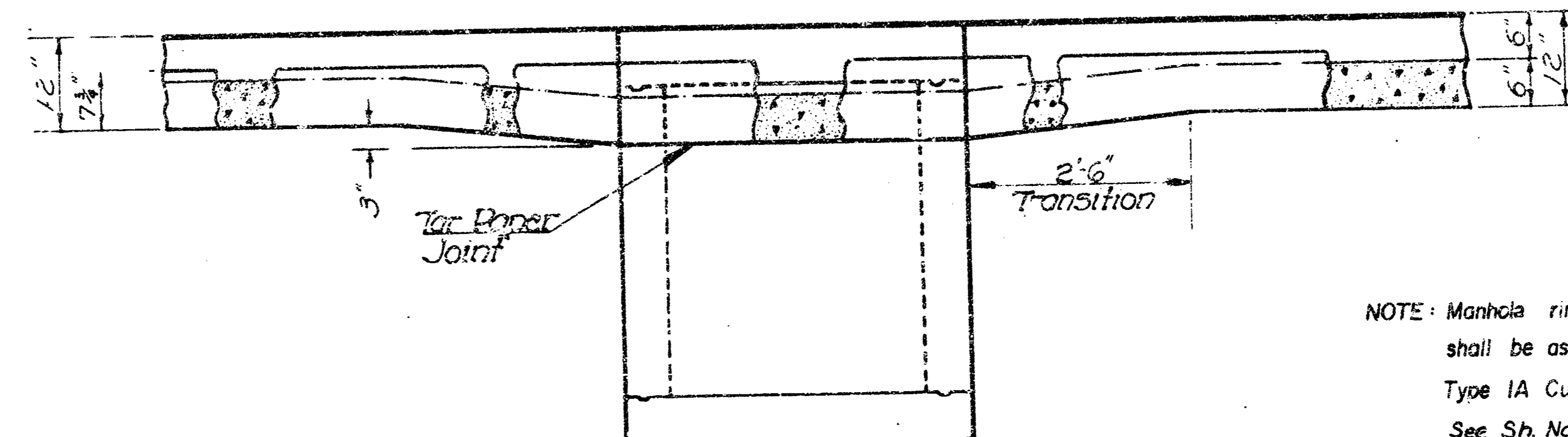
PLAN



SECTION A-A



REAR VIEW



NOTE: Manhole ring and cover to inlet tops shall be as per City of Wichita Standard Type IA Curb Inlet Precast Top. See Sh. No. 6 for Ring & Cover Details and Bending Diagrams.

GENERAL NOTE

CONCRETE

Shall conform to the City of Wichita Concrete Pavement Specifications.

Bevel all exposed 90° concrete edges with a 3/4" triangular bevel.

CAST IRON

All exposed cast iron surfaces not subject to traffic shall receive one coat of a zinc dust paint applied either in the shop or in the field and two coats of aluminum paint applied in the field.

REINFORCING STEEL

All dimensions relative to reinforcing steel are to the center of bars unless otherwise noted on the plans. Reinforcing steel shall be spaced at 6" centers and shall be 1-1/2" clear distance from slab surfaces unless otherwise shown on the plans.

All reinforcing steel shall be placed within 1/4" of plan dimension unless waived by the Engineer. Reinforcing steel shall be bent around all pipes unless otherwise directed by the Engineer.

MISCELLANEOUS

When directed by the Engineer the top of the inlet shall be sloped in order to match the longitudinal roadway grade ground line and/or other conditions.

When directed by the Engineer small openings may be required in the back of the inlet in order to drain a low area. No deductions in concrete quantities will be made for these openings.

Expansion joint material shall be either poured joint sealing compound (hot or cold) or pre-molded joint filler (non-extruding Type B) unless otherwise noted on the plans.

Inlet floors shall be shaped as directed by the Engineer.

No concrete quantities shall be computed for this work.

Gutter shaping shall be accomplished as shown and payment shall be subsidiary to the adjacent type of curb and gutter.

BASIS OF PAYMENT & METHOD OF MEASUREMENT

Curb Inlet (Type 22) shall be measured & paid for at the contract unit price bid per each. This shall be considered full compensation for all excavation, backfilling, for all materials, labor, equipment, tools & incidentals necessary to complete this work.

No separate payment shall be made for "Inlet Hook-Up". No deduction in combined curb & gutter shall be made.

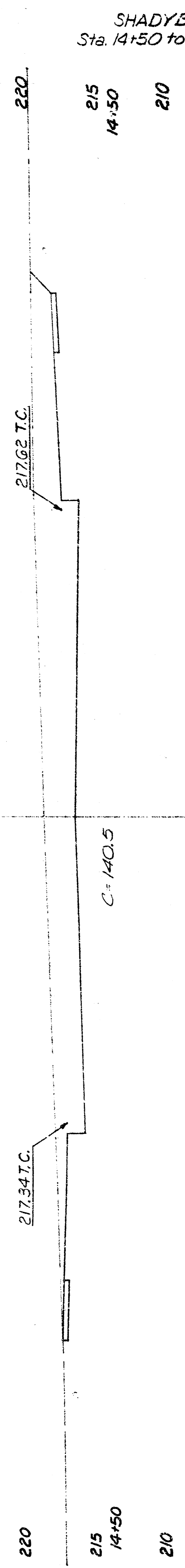
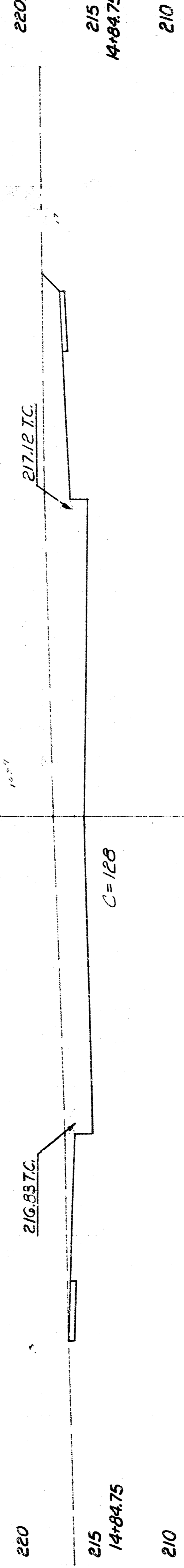
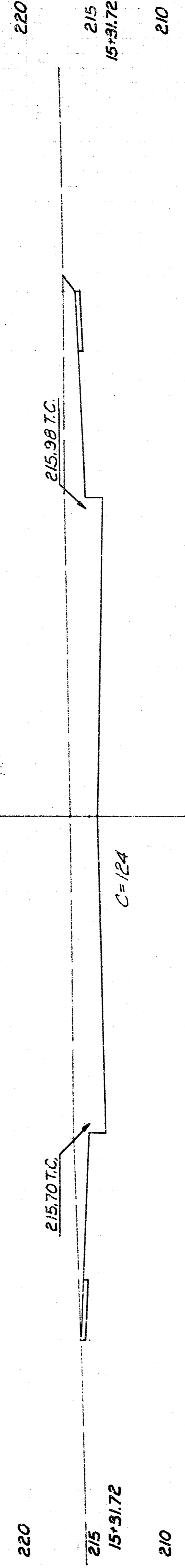
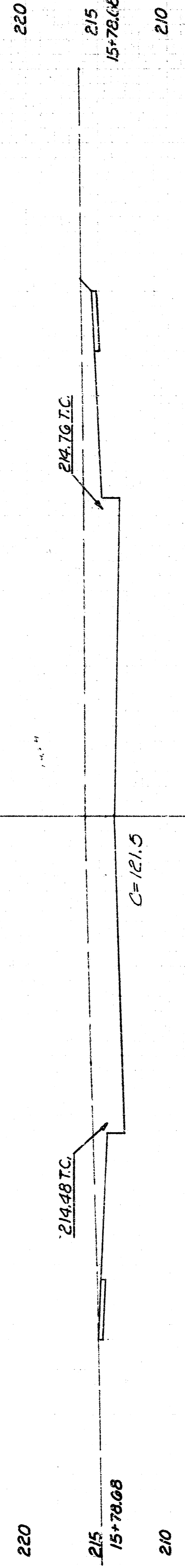
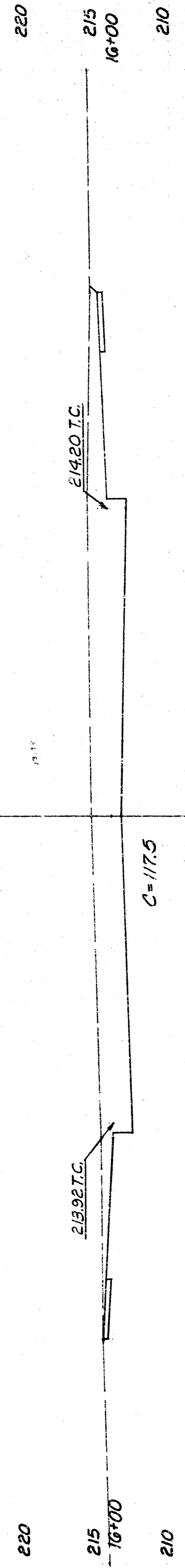
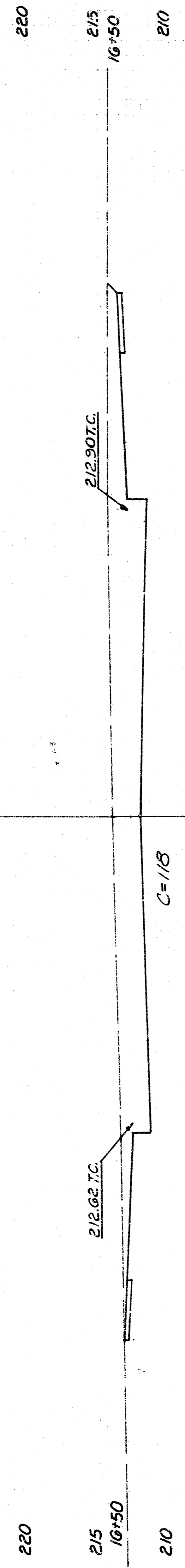
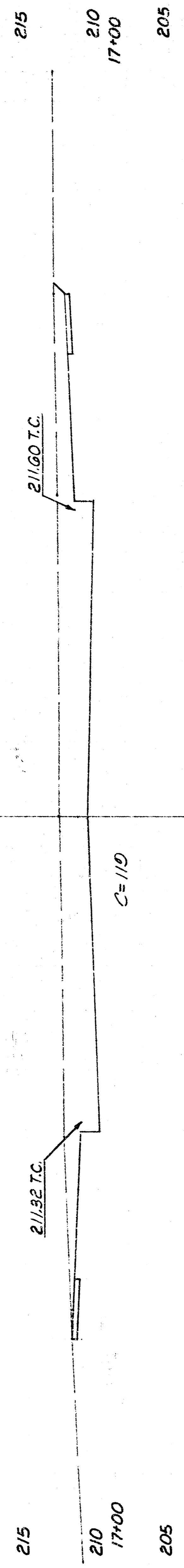
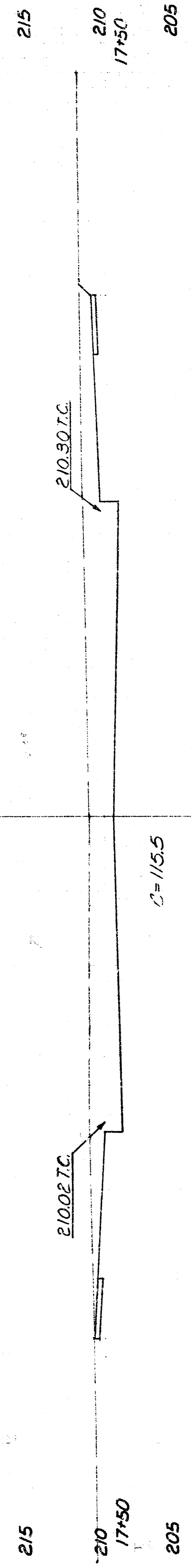
NO.	DATE	REVISIONS	BY	APP'D.

STATE HIGHWAY COMMISSION OF KANSAS

TYPE 22 CURB INLET

SHEET NO.	OF	SCALE	APP'D.	TRAINED
DESIGNED				
DESIGN CR.				

40 30 20 10 0 10 20 30 40



SHADYBROOK
Sta. 14+50 to Sta. 17+50

