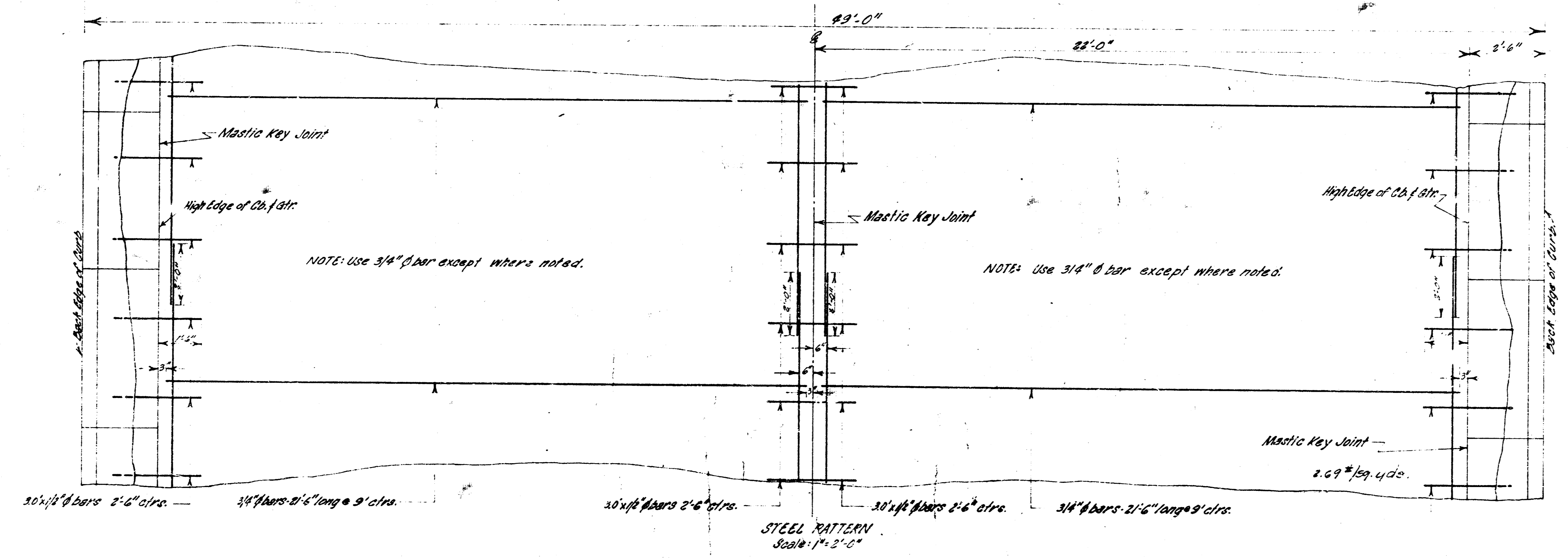
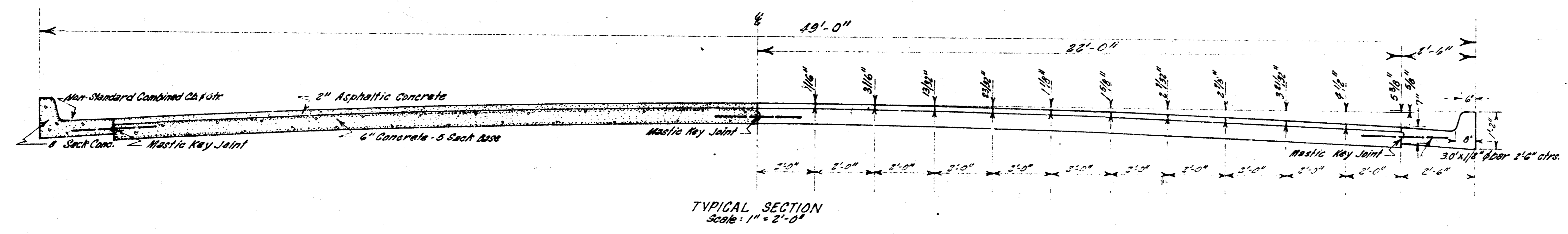
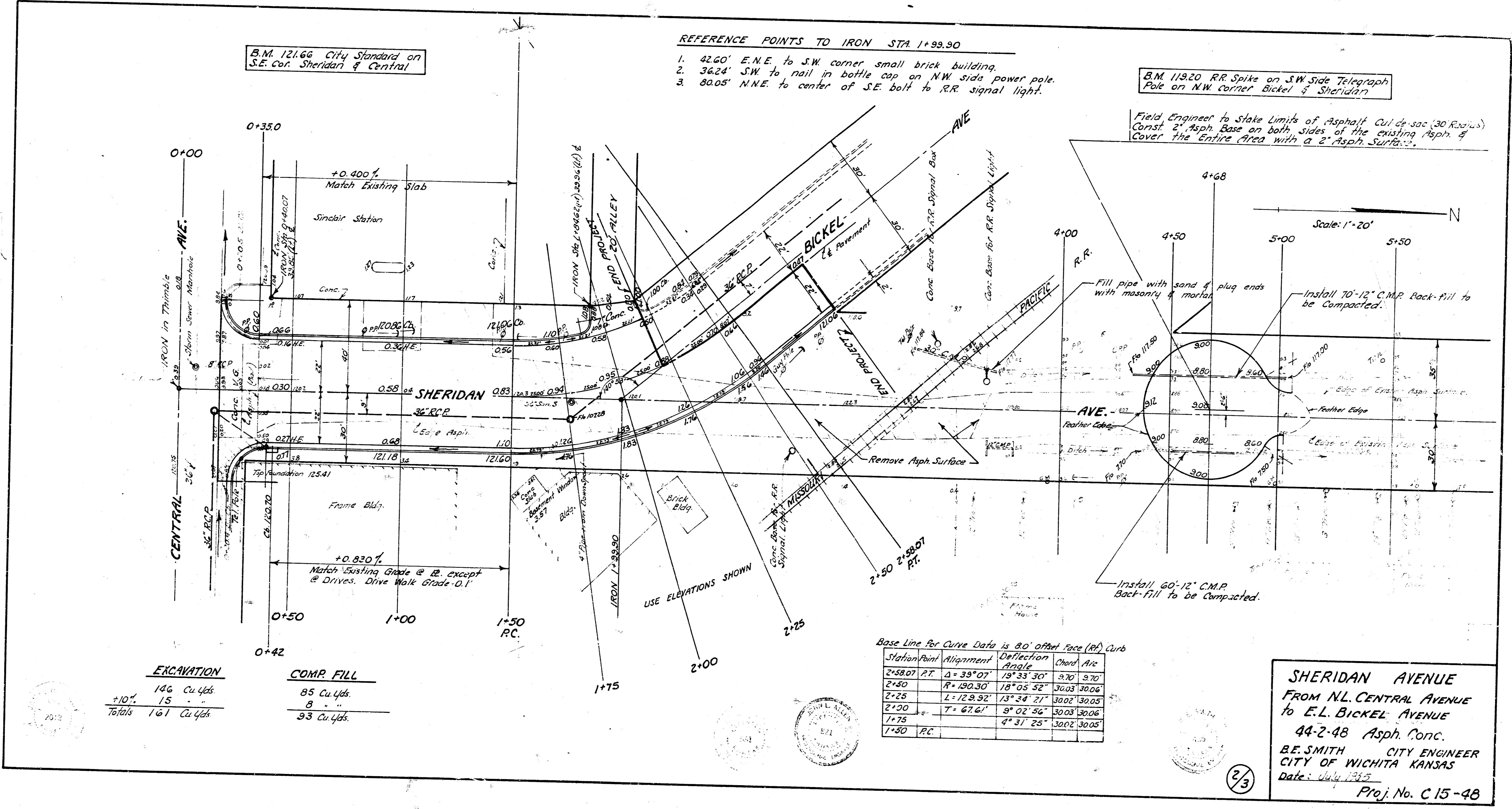


SHERIDAN AVENUE
 FROM N.L. CENTRAL AVE. TO E.L. BICKEL AVE.
 CITY OF WICHITA KANSAS. B.E. SMITH CITY ENGINEER

PROJECT NO. C 15-48





B.M. 121.66 City Standard on S.E. Cor. Sheridan & Central

REFERENCE POINTS TO IRON STA. 1+99.90

- 42.60' E.N.E. to S.W. corner small brick building.
- 36.24' S.W. to nail in bottle cap on N.W. side power pole.
- 80.05' N.N.E. to center of S.E. bolt to R.R. signal light.

B.M. 119.20 R.R. Spike on S.W. Side Telegraph Pole on N.W. corner Bickel & Sheridan

Field Engineer to Stake Limits of Asphalt Curb & 30' Radius Const. 2\"/>

W.F.C. M.H.S. W.C.A.

EXCAVATION		COMP. FILL	
+10'	146 Cu Yds		85 Cu Yds
	15 "		8 "
Totals	161 Cu Yds		93 Cu Yds

Base Line for Curve Data is 8.0' offset face (R) Curb

Station Point	Alignment	Deflection Angle	Chord	Arc
2+58.07 P.T.	$\Delta = 39^{\circ} 07'$	$19^{\circ} 33' 30''$	3.70	3.70
2+50	$R = 190.30'$	$18^{\circ} 05' 32''$	30.03	30.06
2+25	$L = 129.92'$	$13^{\circ} 34' 21''$	30.02	30.05
2+00	$T = 67.61'$	$9^{\circ} 02' 36''$	30.03	30.06
1+75			30.02	30.05
1+50 P.C.				

SHERIDAN AVENUE
 FROM N.L. CENTRAL AVENUE
 TO E.L. BICKEL AVENUE
 44-2-48 Asph. Conc.
 B.E. SMITH CITY ENGINEER
 CITY OF WICHITA KANSAS
 Date: July 1935
 Proj. No. C 15-48