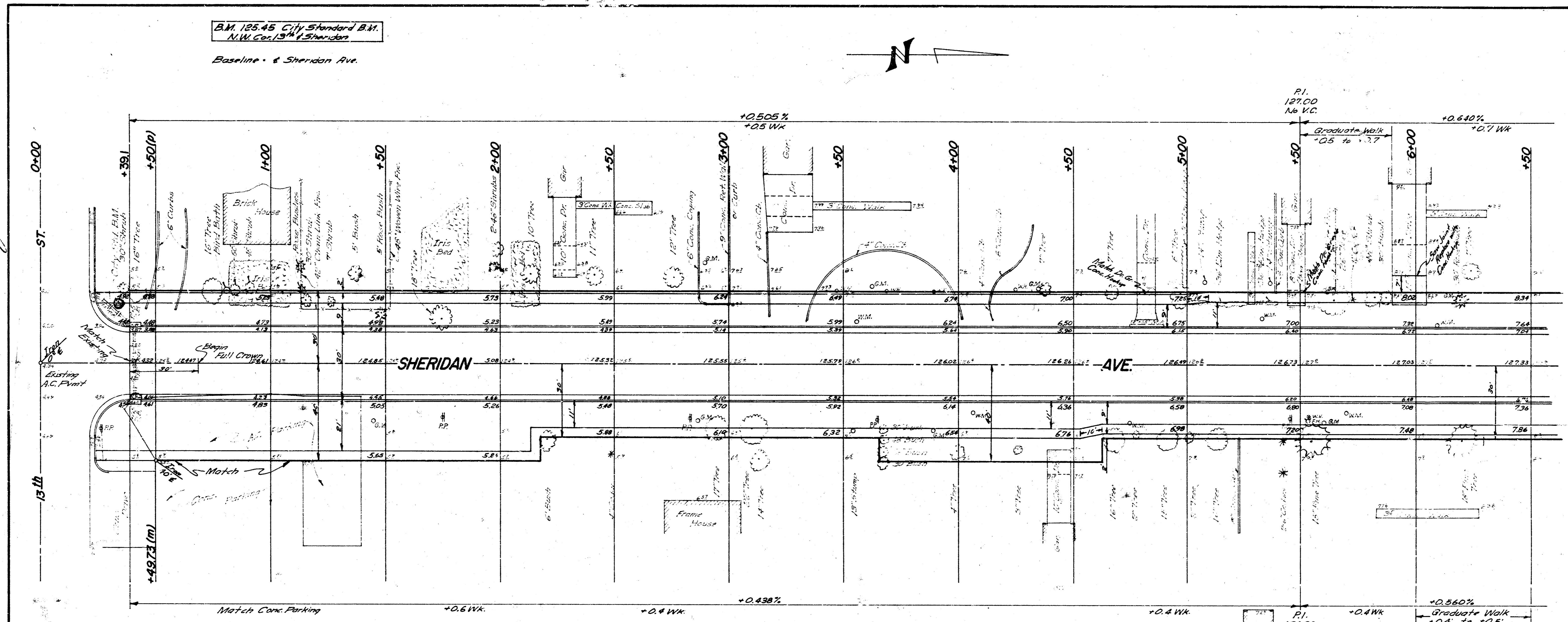
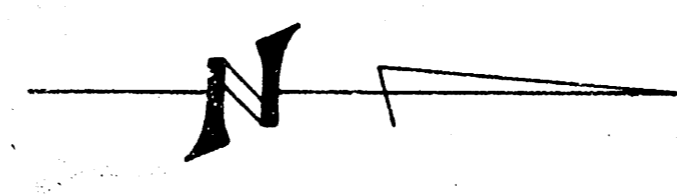


BM 125.45 City Standard B.M.  
N.W. Cor. 13th & Sheridan  
Baseline - & Sheridan Ave.



Surveyed  
B. E. Smith  
City Engineer  
June 1967

NOTE TO FIELD ENGINEER AND CONTRACTOR  
Grade and Clear Parking for Proposed  
Sidewalk. Walk Grades Shown as to  
Back of Walk at Proposed Location.  
SIDEWALK TO BE CONSTRUCTED BY OTHERS

EARTHWORK QUANTITIES  
Property  
Excavation 2565.6 C.Y.  
+10% 256.6  
2822.2 C.Y.



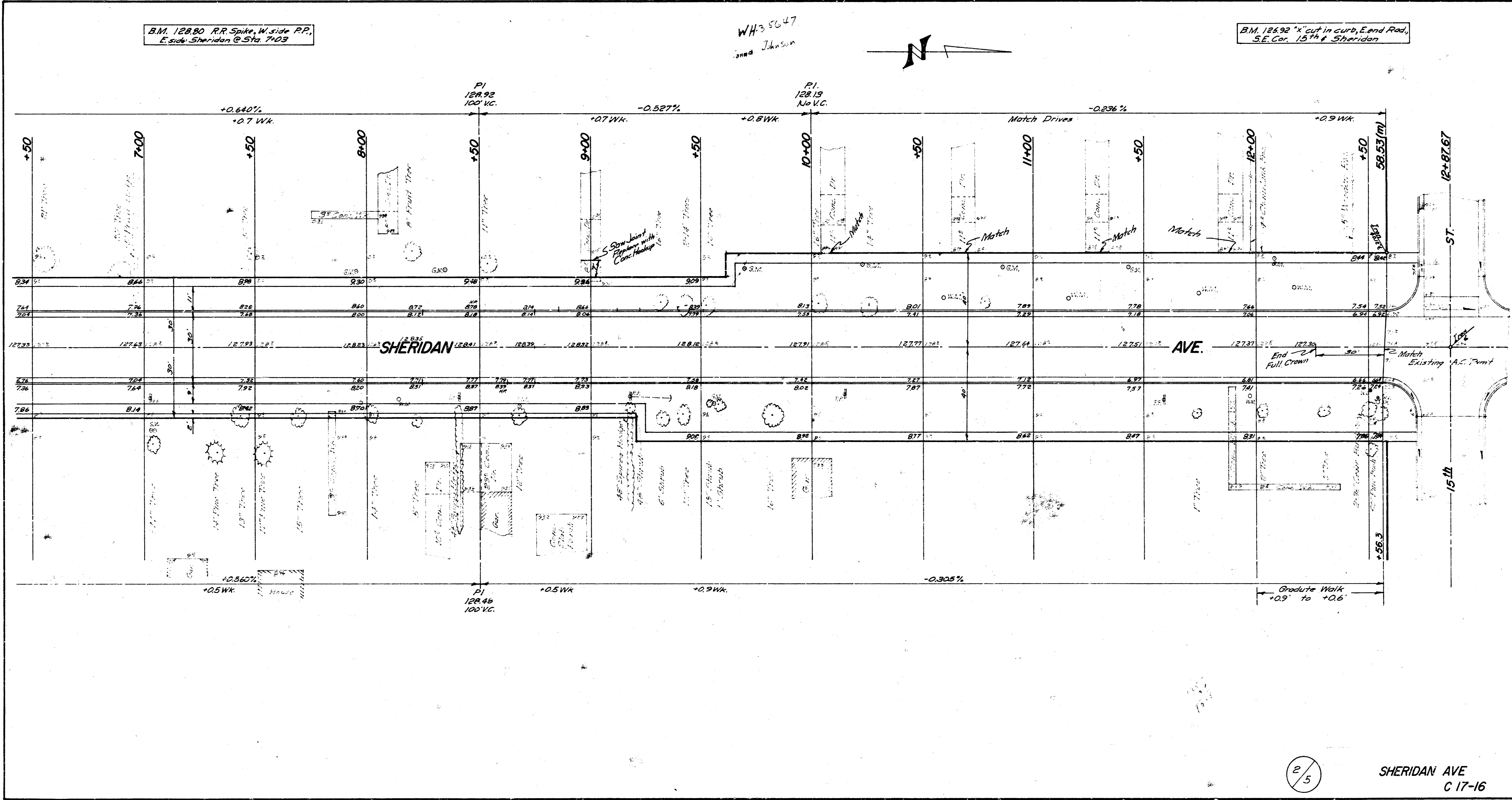
**SHERIDAN AVENUE**  
From N.L. 13th STREET  
To S.L. 15th STREET  
26'-2'-30' A.C.  
B. E. SMITH CITY ENGINEER  
CITY OF WICHITA, KANSAS  
DATE JUNE 1967 C 17-16

1/5

B.M. 12880 RR Spike, W. side RR,  
E. side Sheridan @ Sta. 7103

W.H. 35047  
J. W. Johnson

B.M. 12892 "X" cut in curb, E. end Road,  
S.E. Cor. 15th & Sheridan



2/5

SHERIDAN AVE  
C 17-16