

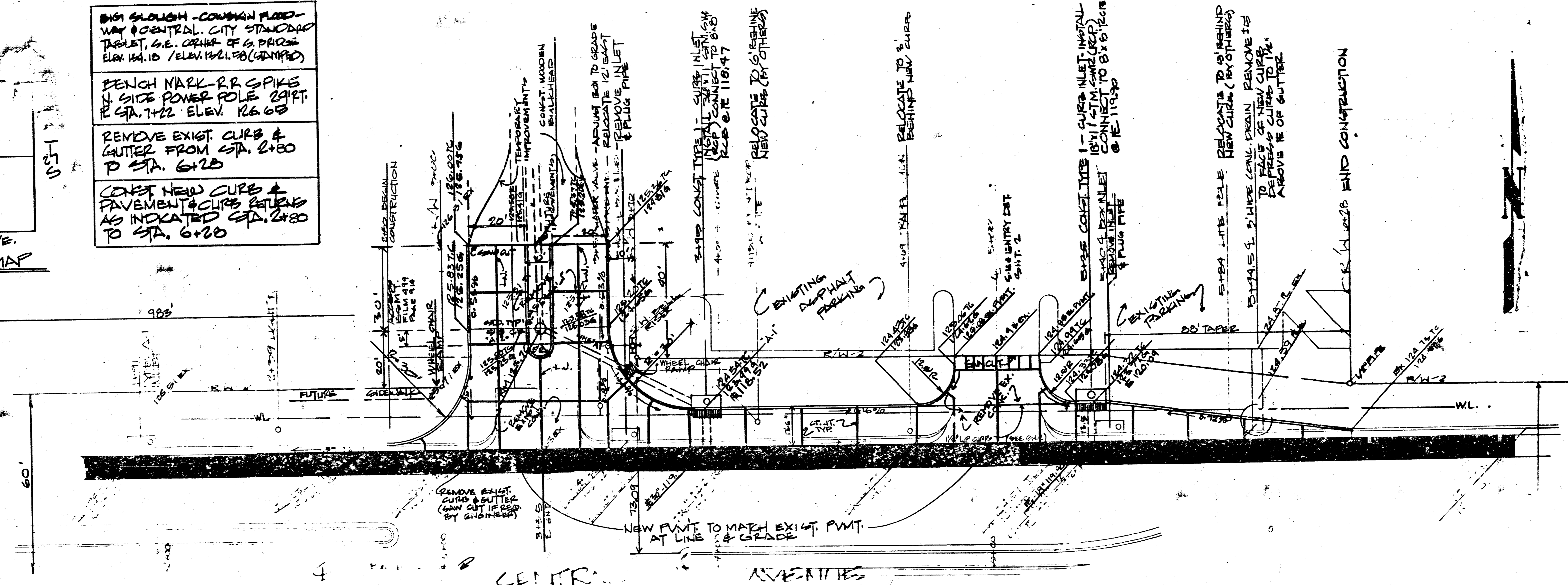
8101 SLOUGH - CONDUIT FLOOR-WAY # CENTRAL CITY STANDARD TABLE, S.E. CORNER OF 2 BRIDGE ELEV. 124.10 / ELEV. 122.00 (G.M.P.F.D.)

FENCH MARK - RR SPIKE N. SIDE POWER POLE 29 FT. P STA. 1+22 ELEV. 126.03

REMOVE EXIST. CURB & GUTTER FROM STA. 2+80 TO STA. 6+20

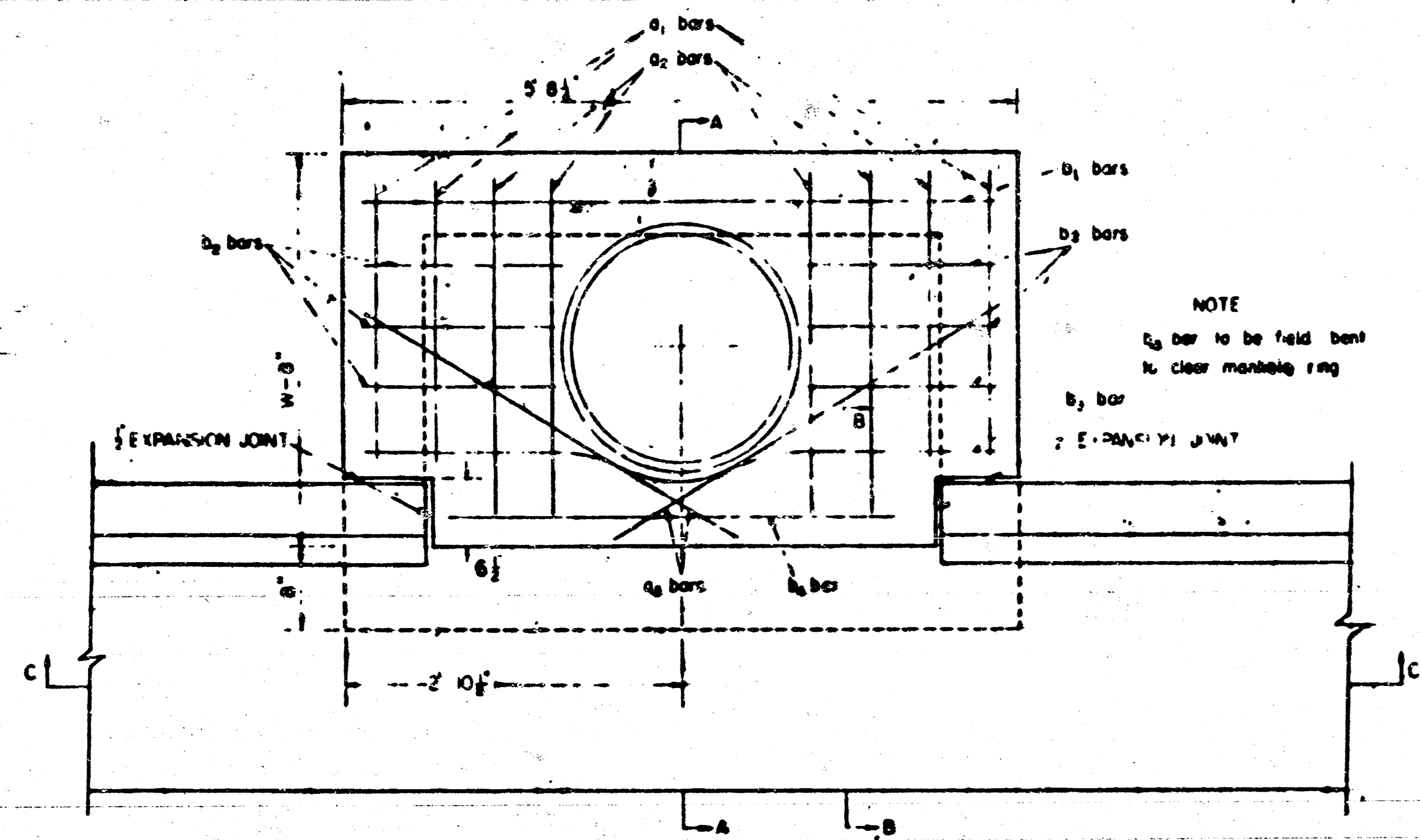
CONVERT NEW CURB & PAVEMENT CURBS RETURN AS INDICATED STA. 2+80 TO STA. 6+20

SECTION LINE

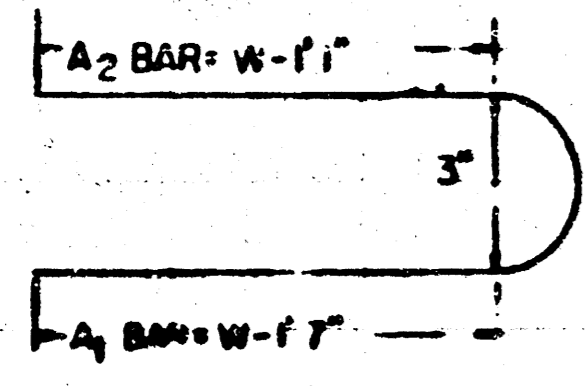


REVISION		BY	DATE	PLAN SCALE	DRAWN C. PROCTOR	APPROVED:
				1"=20'	DESIGNED JAT	
				PROFILE SCALE	PAVEMENT JOINTING	
				HORIZONTAL:	PLAN	
				VERTICAL:	RECOMMENDED	
					DESIGNED DIRECTOR	
				FILE: 4118	DRAWING:	DATE:
				ATLAS PAGE NO:		SHEET 2 OF 6 SHEETS

PROJECT NO.
472-76-245-0000-000-000-03
CITY OF WICHITA, KANSAS
A.C. YOUNG & ASSOCIATES
208 S. PEGASUS, SUITE 100, WICHITA, KANSAS 67202-2801

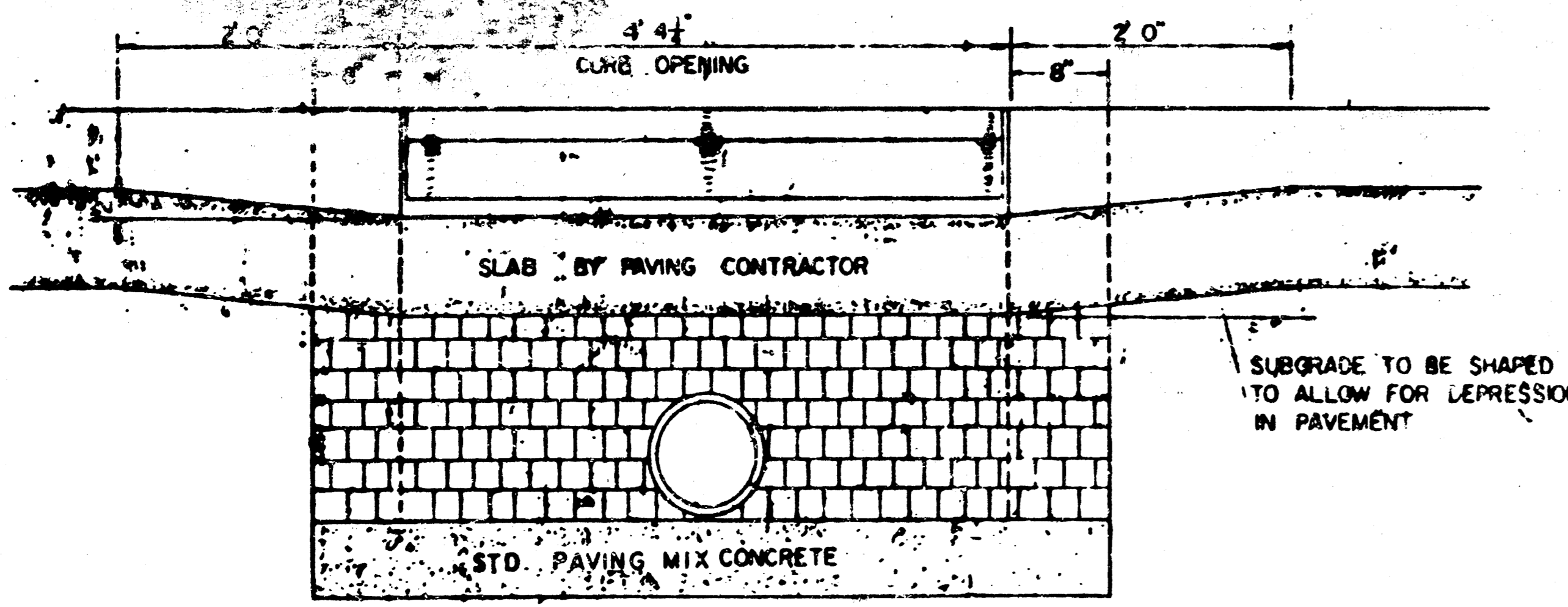


PLAN
SCALE 1"=10'



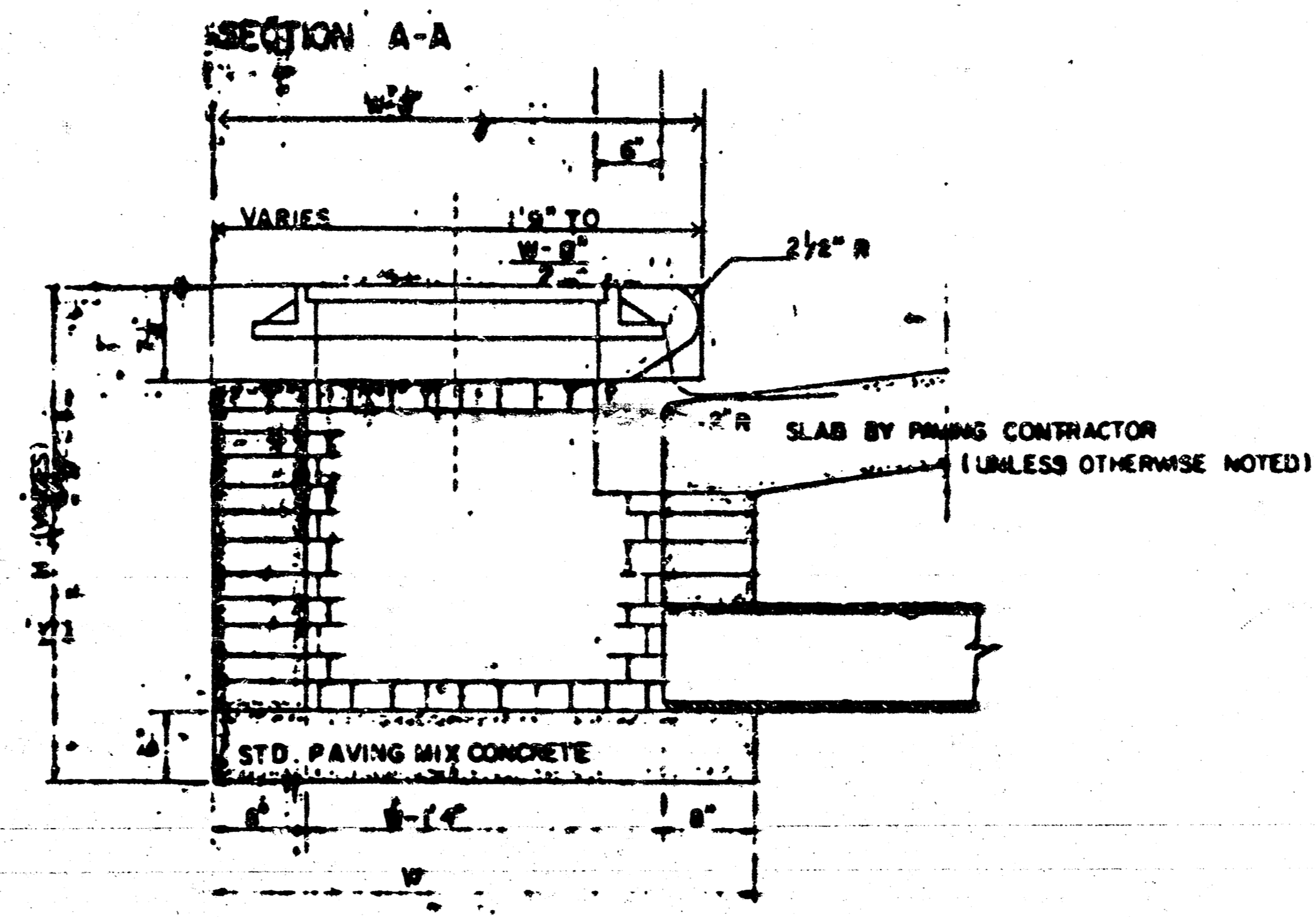
BAR	a ₁	a ₂	a ₃	b ₁	b ₂	b ₃	b ₄	b ₅	b ₆	WT Lbs
SIZE	"4	"4	"4	"4	"4	"4	"4	"4	"6	
NUMBER	4	4	2	3	5	6				
W=4'2"	5'5"	6'5"	3'7"	5'5"	-	-	1'7"	5'6"	4'0"	6'0"
W=5'2"	7'1"	3'1"	4'7"	-	5'5"	-	1'7"	5'6"	4'3"	7'7"
W=6'0"	8'1"	10'1"	5'7"	-	5'5"	1'7"	5'6"	4'0"	9'7"	

*NOTE: ALL BARS TO BE PLACED APPROXIMATELY 2" BELOW TOP OF BRICK COVER



SECTION C-C
SCALE 1"=10'

BRICK FOR INLET CONSTRUCTION SHALL CONFORM WITH THE LATEST REVISION OF THE AMERICAN SOCIETY FOR TESTING AND MATERIALS DESIGNATION C32 FOR MANHOLE BRICK GRADE MS



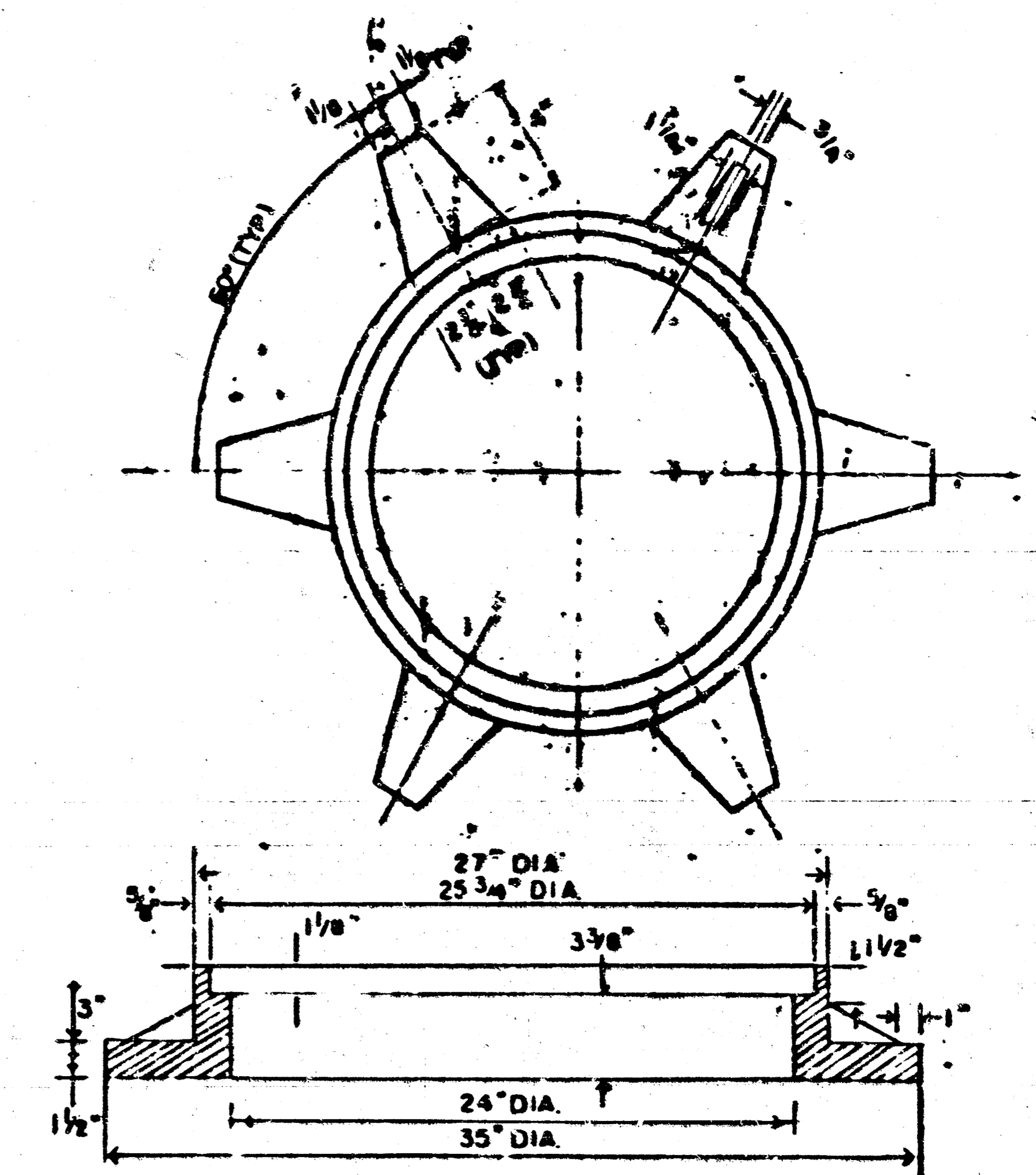
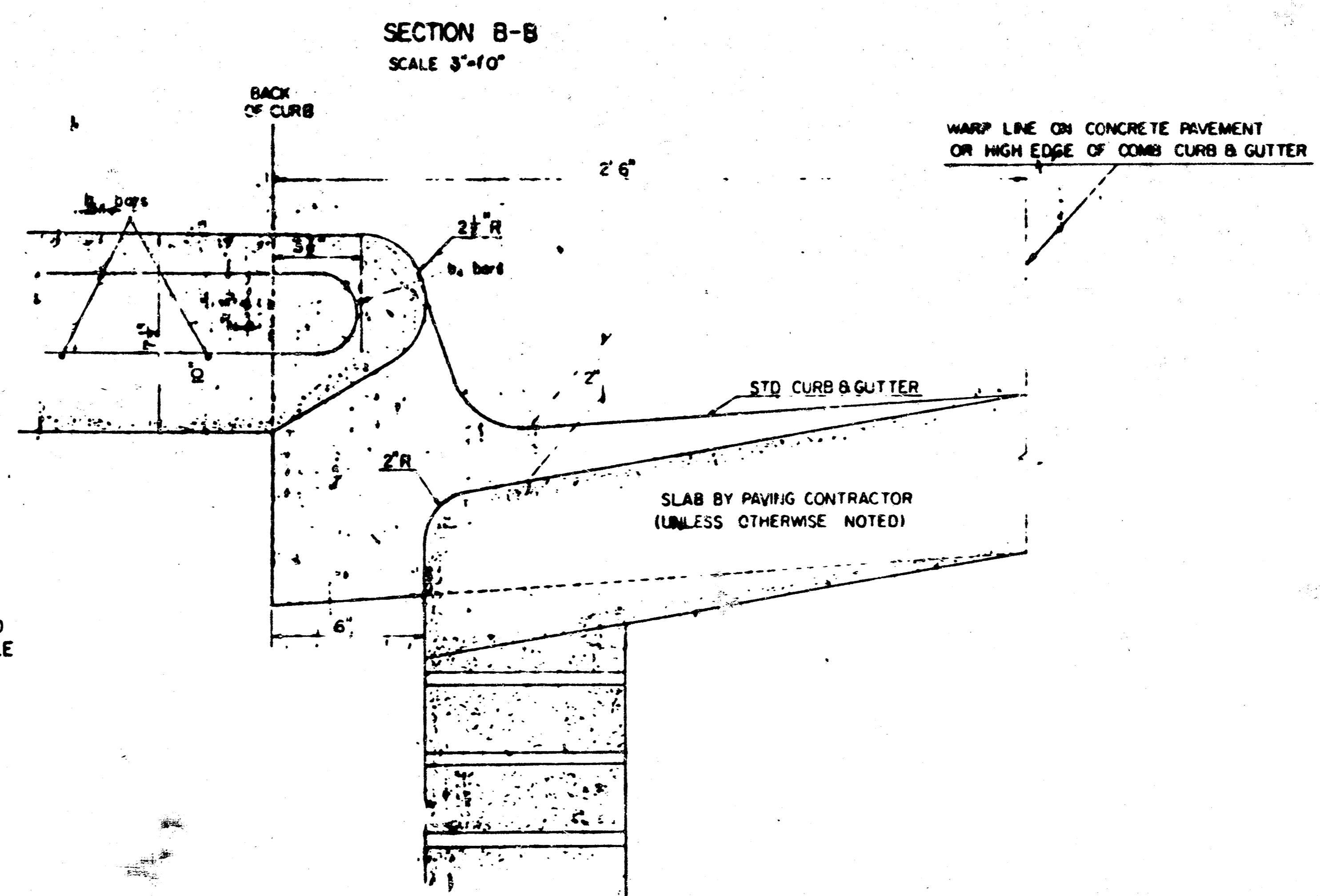
SECTION A-A
SCALE 1"=10'

STD CURB INLET CONCRETE TOP

W	SIZE	PIPE SIZE	D. YD CONC.
4'2"	36" X 58" X 7"	24" B SMALLER	0.46 ^g
5'0"	44" X 58" X 7"	30" B 36"	0.57 ^g
6'0"	54" X 58" X 7"	42" B 48"	0.71 ^g

^gGROSS VOLUME

CONCRETE TOPS TO BE INSTALLED ON THIN MORTAR CUSHION TO INSURE FULL SUPPORT ALONG BRICK WALLS. CONCRETE TOPS MAY BE CAST IN PLACE OR PRECAST CONCRETE FOR INLET TOPS AND FLOORS SHALL BE STD. PAVING MIX.

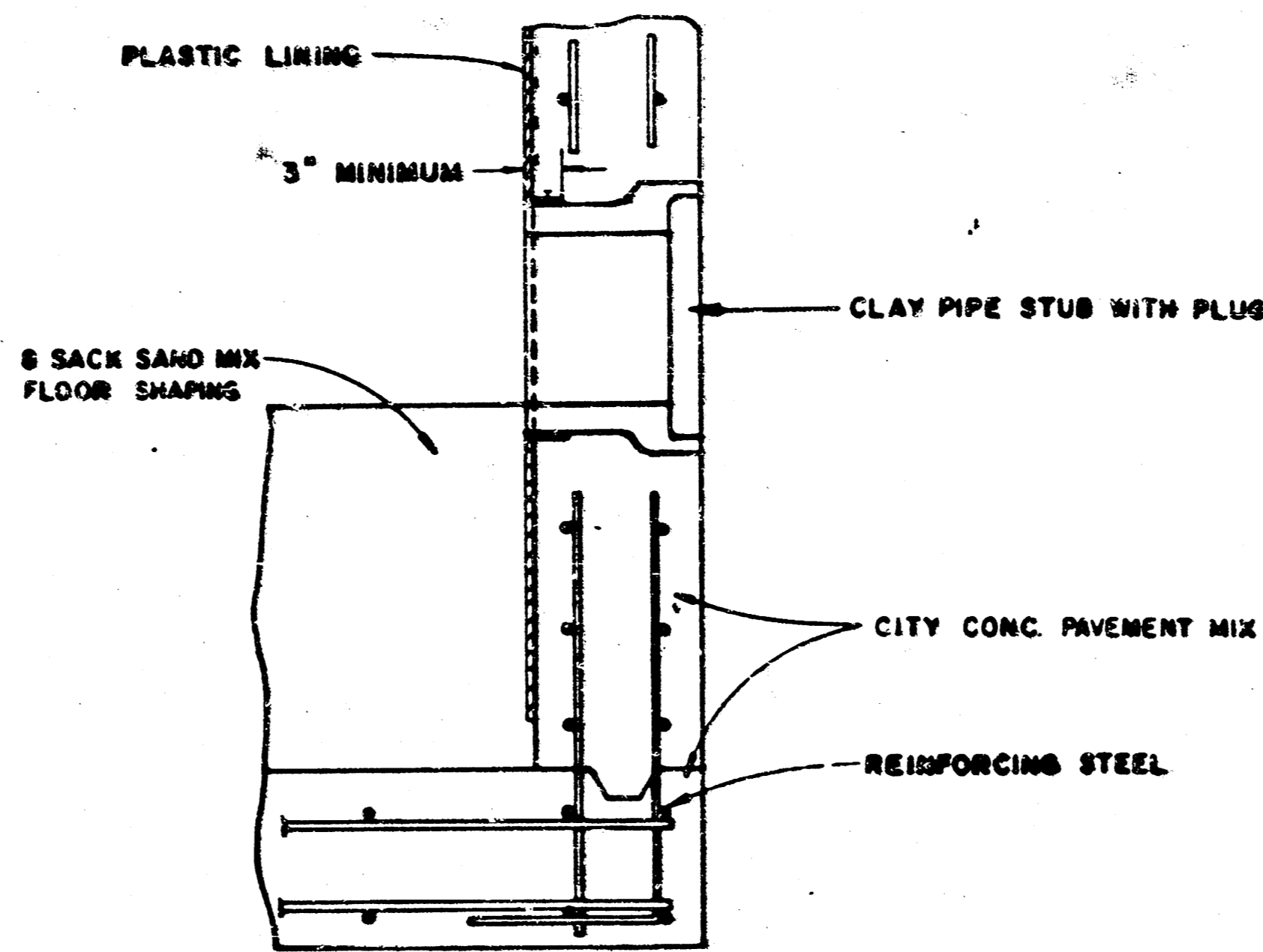
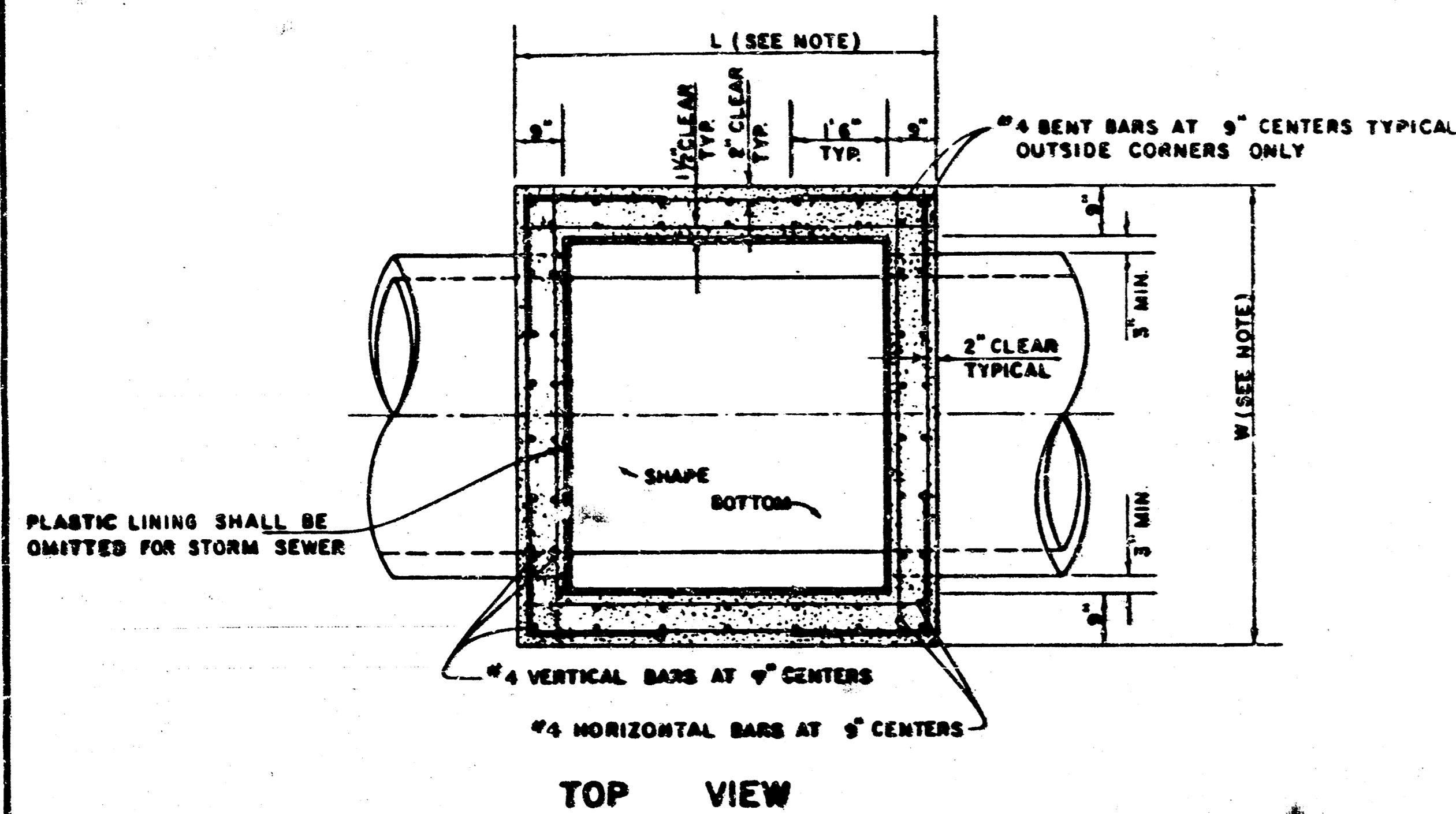


THIS TYPE INLET TO BE USED WHEN PAVEMENT IS ASPHALT PAVEMENT WITH CONCRETE BASE AND/OR WHEN PAVEMENTS HAVE FULL HEIGHT STANDARD CURBS.

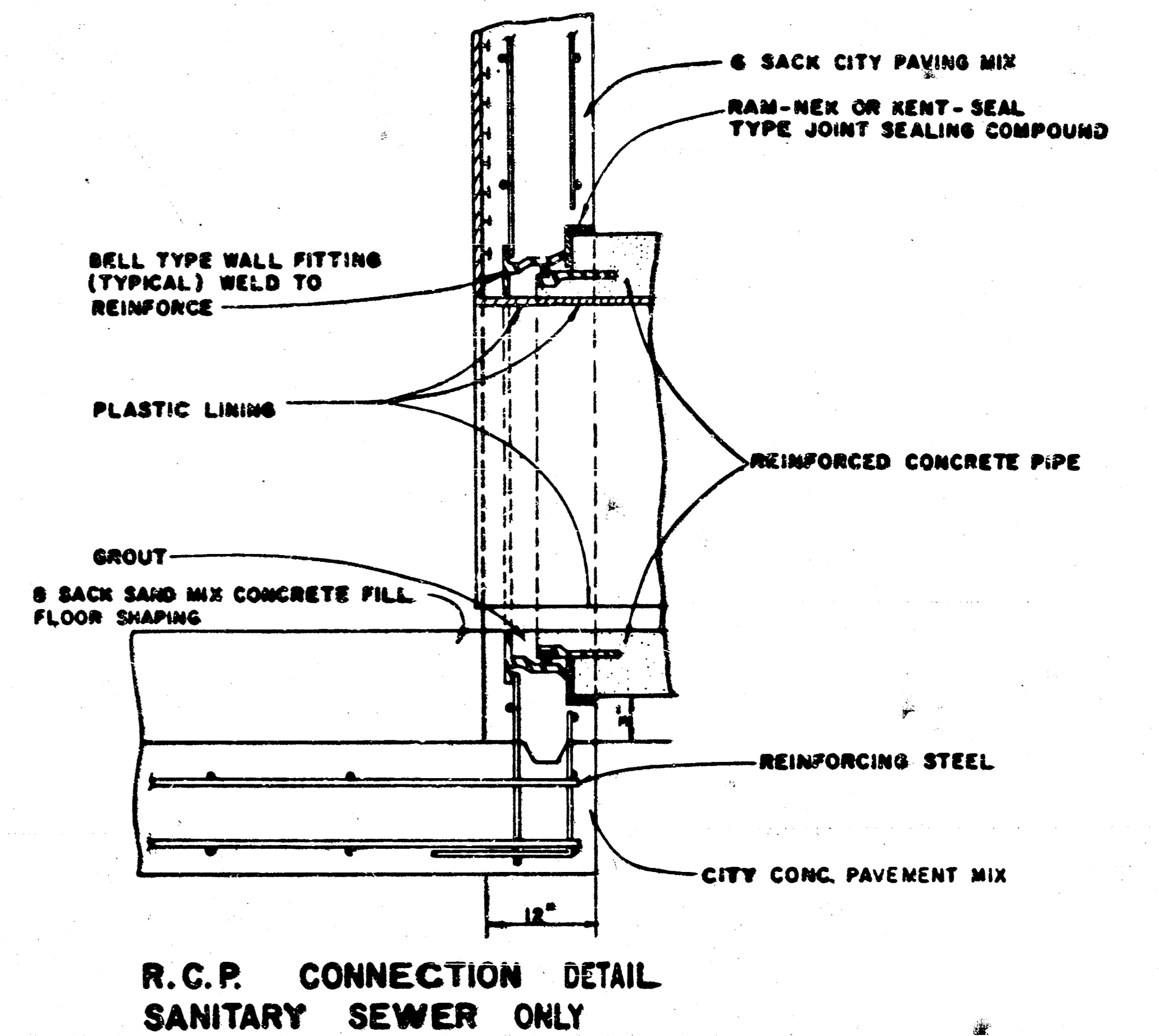
DETAIL
STANDARD CURB INLET-TYPE I
CITY OF WICHITA, KANSAS

FEBRUARY, 1975

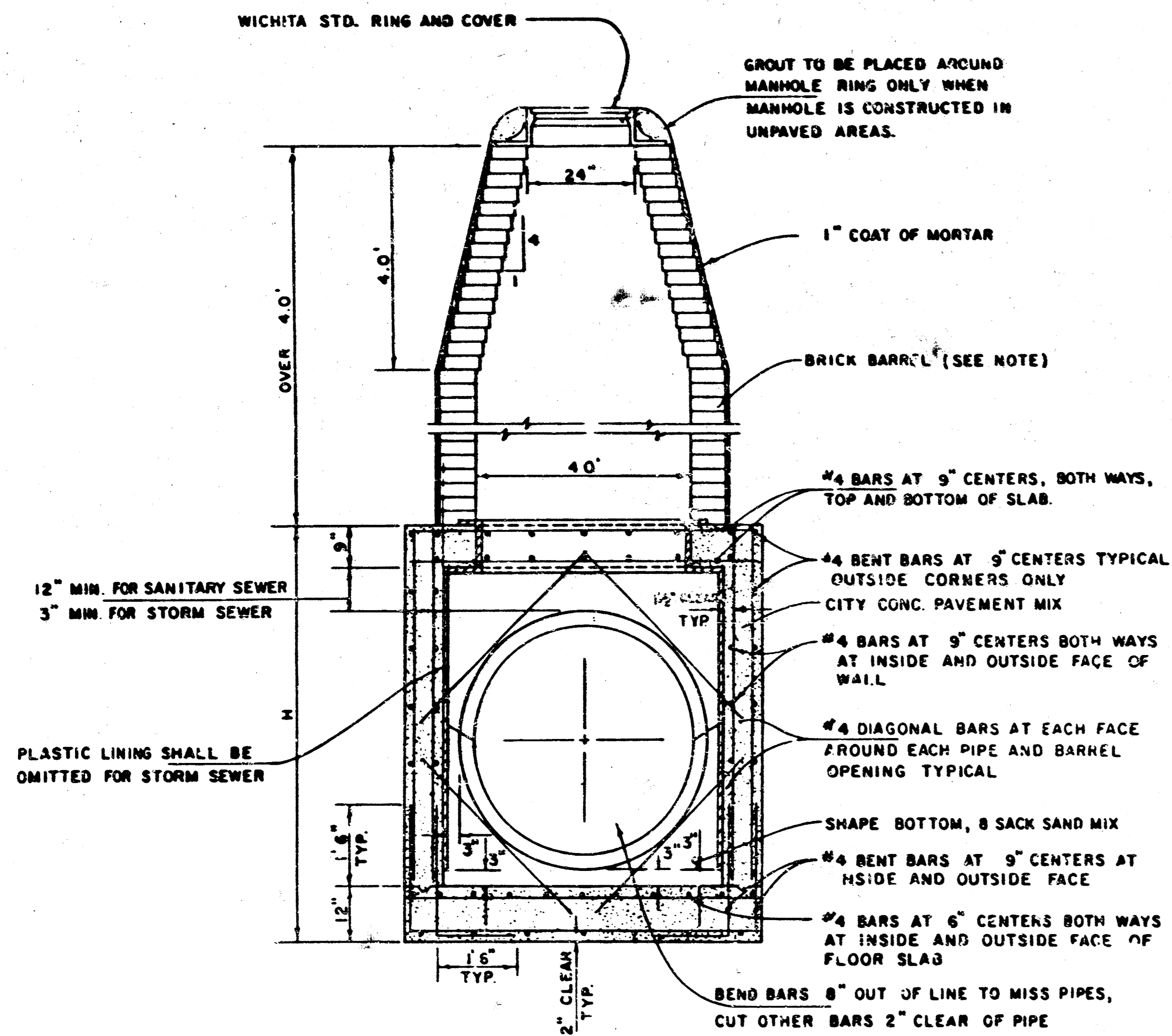
SHEET 4 OF 6



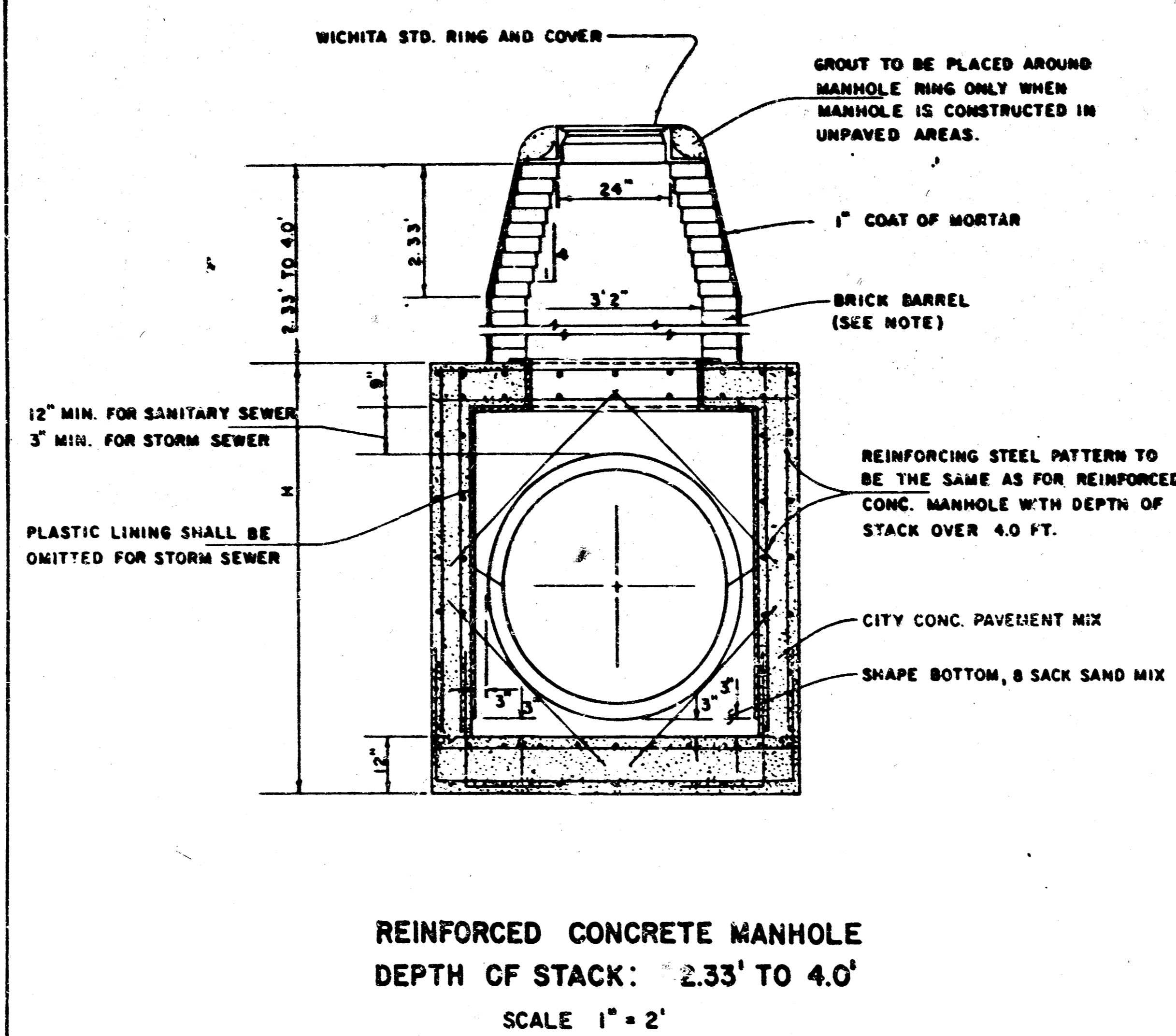
V.C.P. CONNECTION DETAIL
SANITARY SEWER ONLY



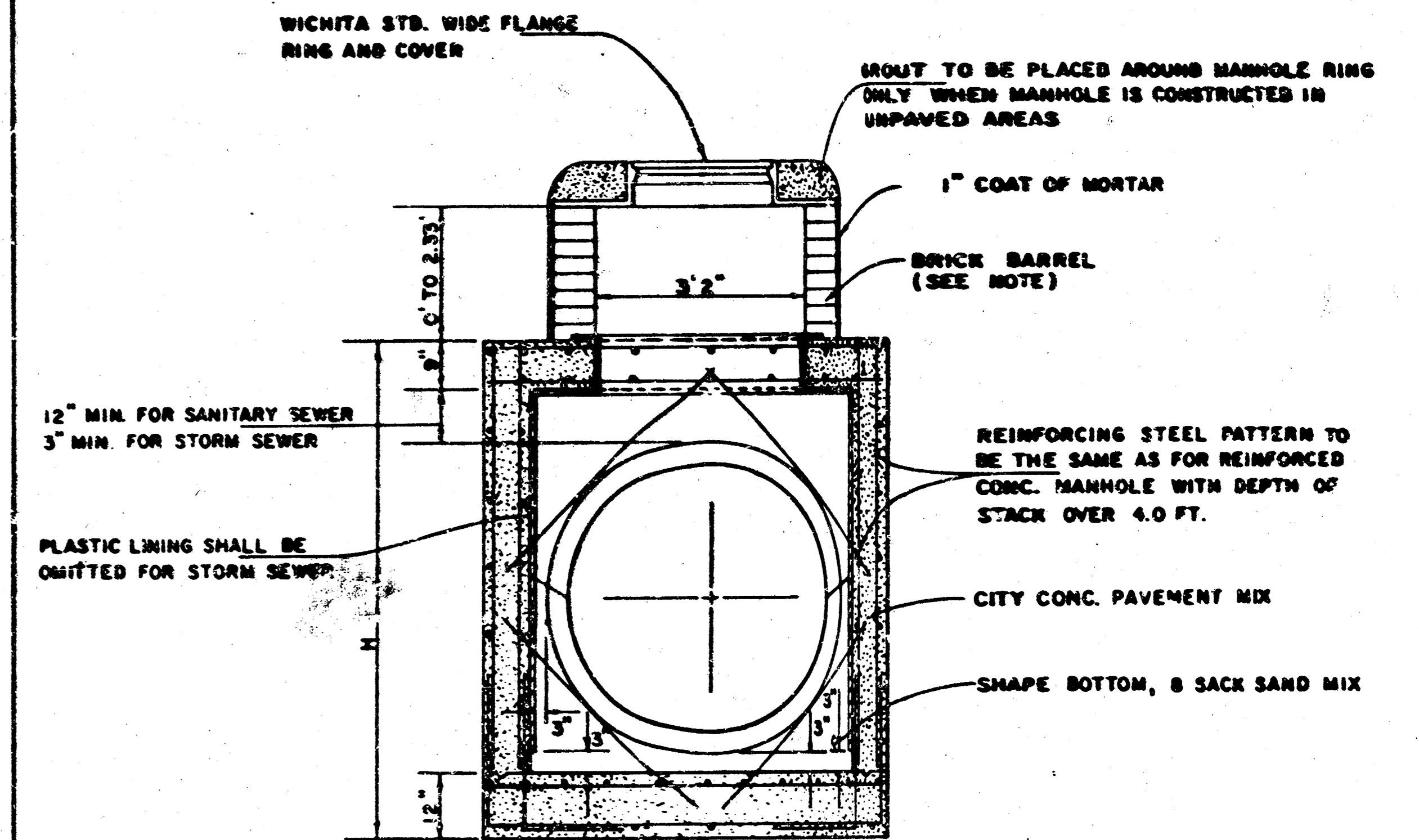
R.C.P. CONNECTION DETAIL
SANITARY SEWER ONLY



REINFORCED CONCRETE MANHOLE
DEPTH OF STACK: OVER 4.0'
SCALE 1" = 2'



REINFORCED CONCRETE MANHOLE
DEPTH OF STACK: 2.33' TO 4.0'
SCALE 1" = 2'



REINFORCED CONCRETE MANHOLE
DEPTH OF STACK: 0' TO 2.33'
SCALE 1" = 2'

NOTE:
BRICK BARRELS LESS THEN 16' DEEP SHALL HAVE 8" WALLS EXCEPT WHEN LOCATED WITHIN PUBLIC STREET OR ALLEY PAVEMENT THEN THE WALL SHALL BE 12". BRICK BARRELS MORE THEN 16' DEEP SHALL HAVE 12" WALLS. THE "L" AND "W" DIMENSIONS SHALL BE A MINIMUM OF 5'6" FOR BRICK BARRELS WITH 8" WALLS AND 6'2" FOR BRICK BARRELS WITH 12" WALLS.

MANHOLE FRAME AND COVER DETAIL

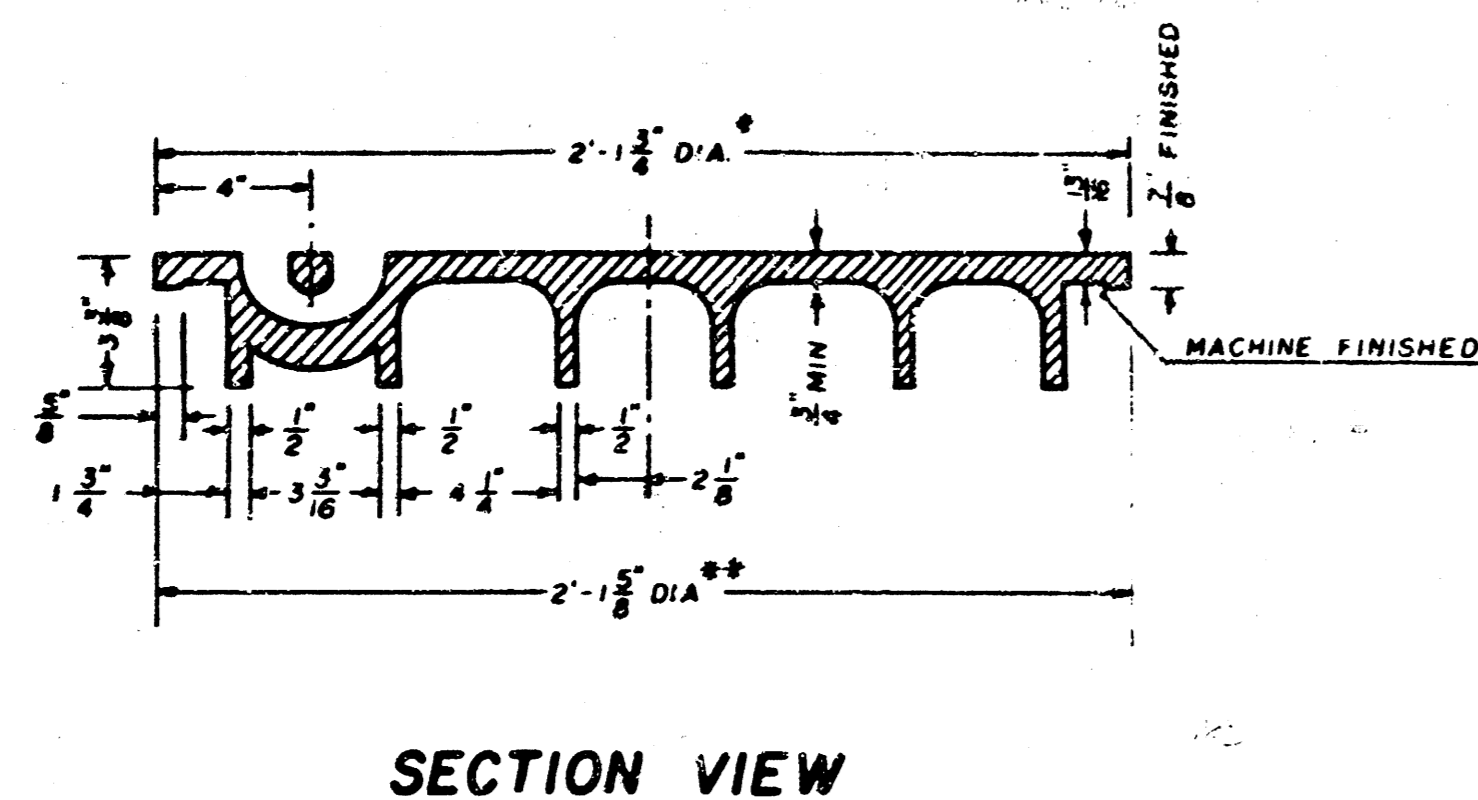
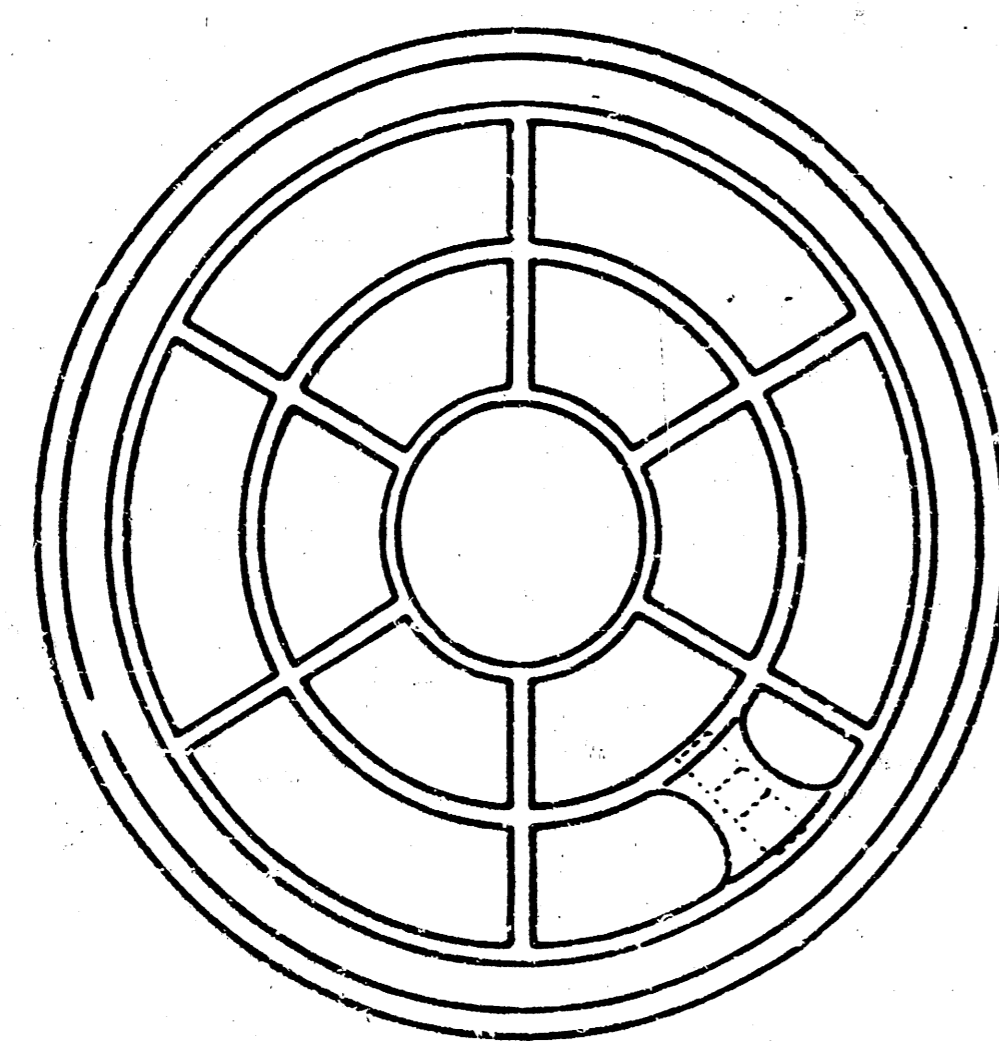
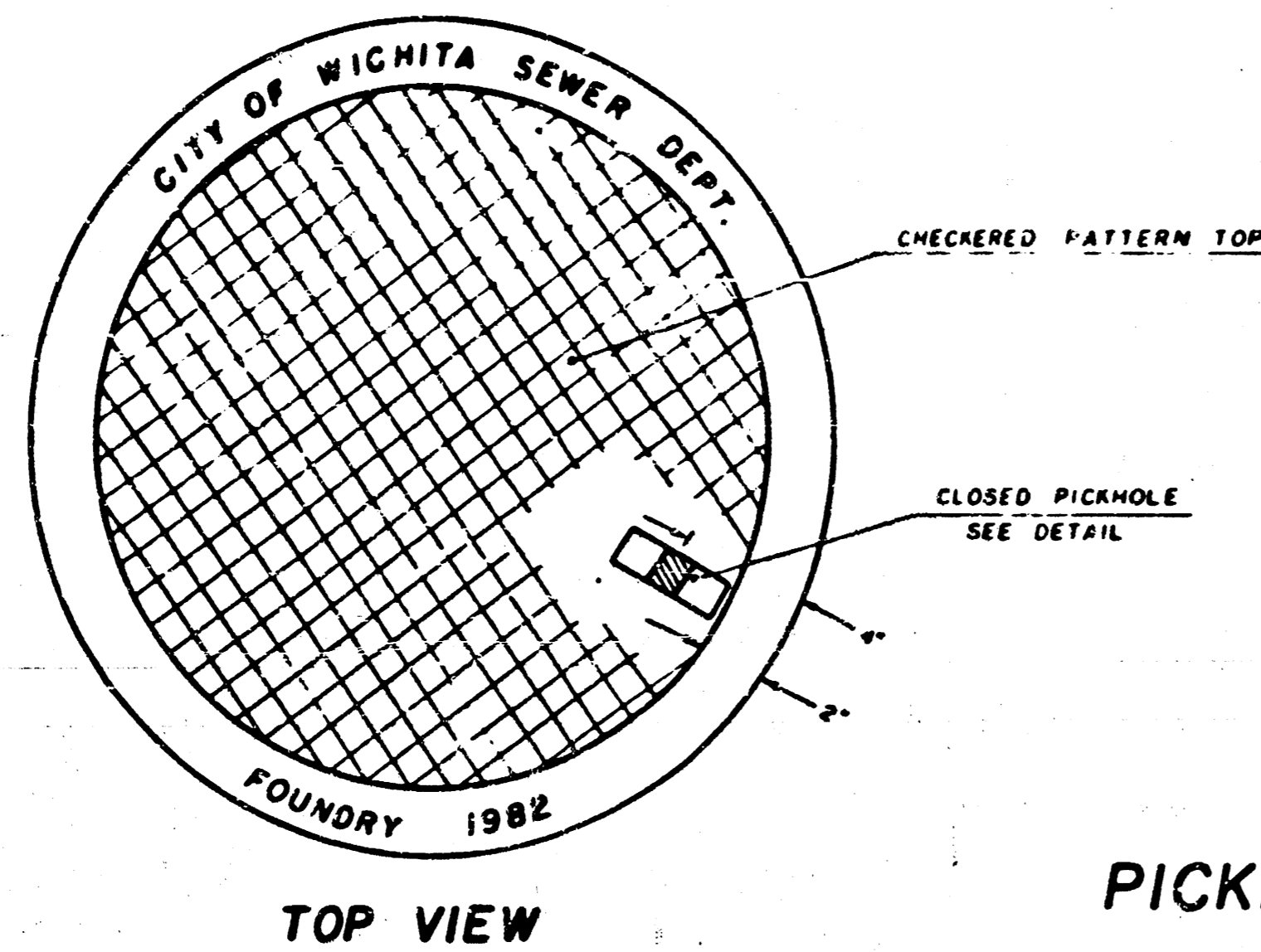
ADOPTED AS STANDARD DESIGN

BY

City of Wichita, Kansas

MANHOLE COVER

Weight: 180 Lbs.

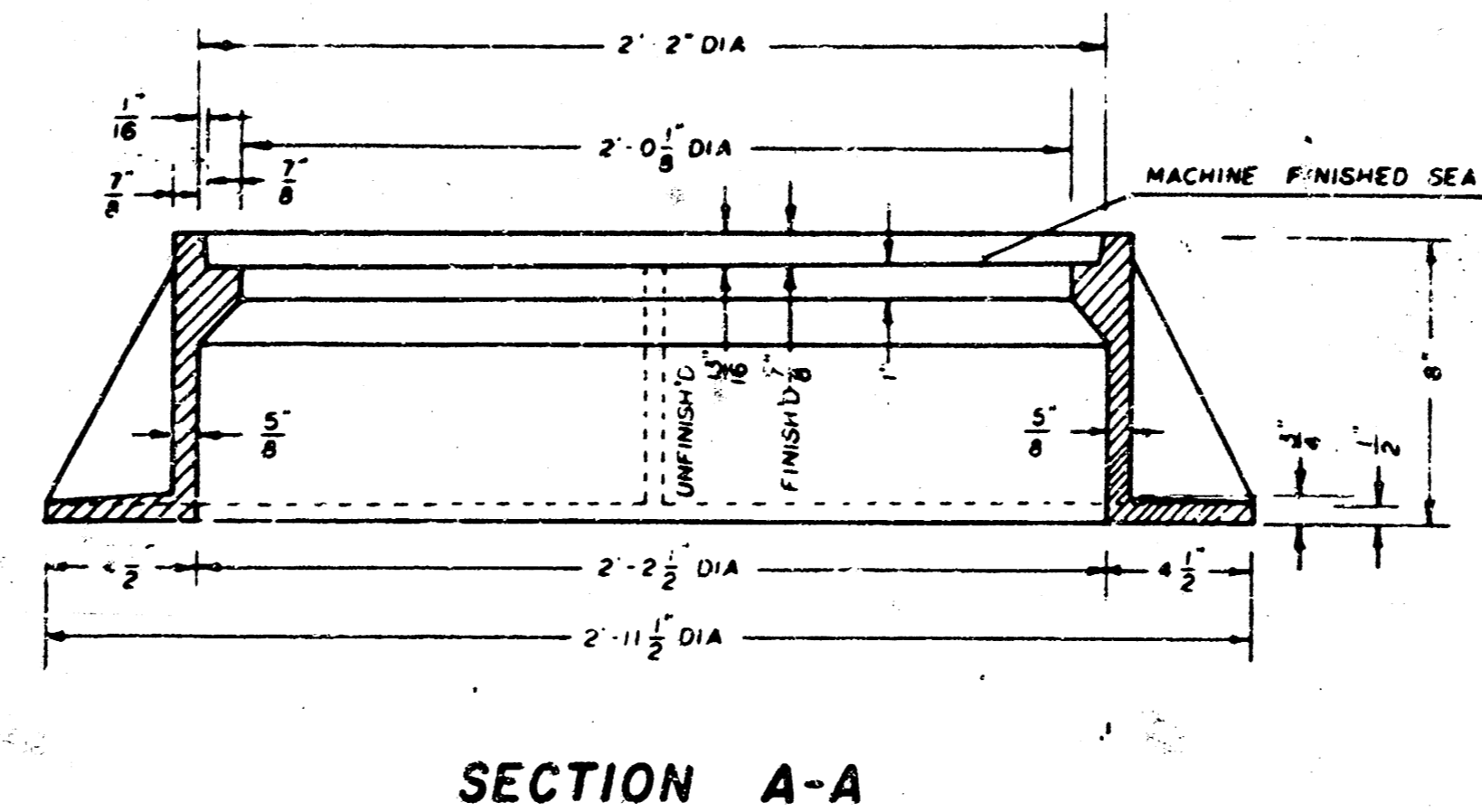
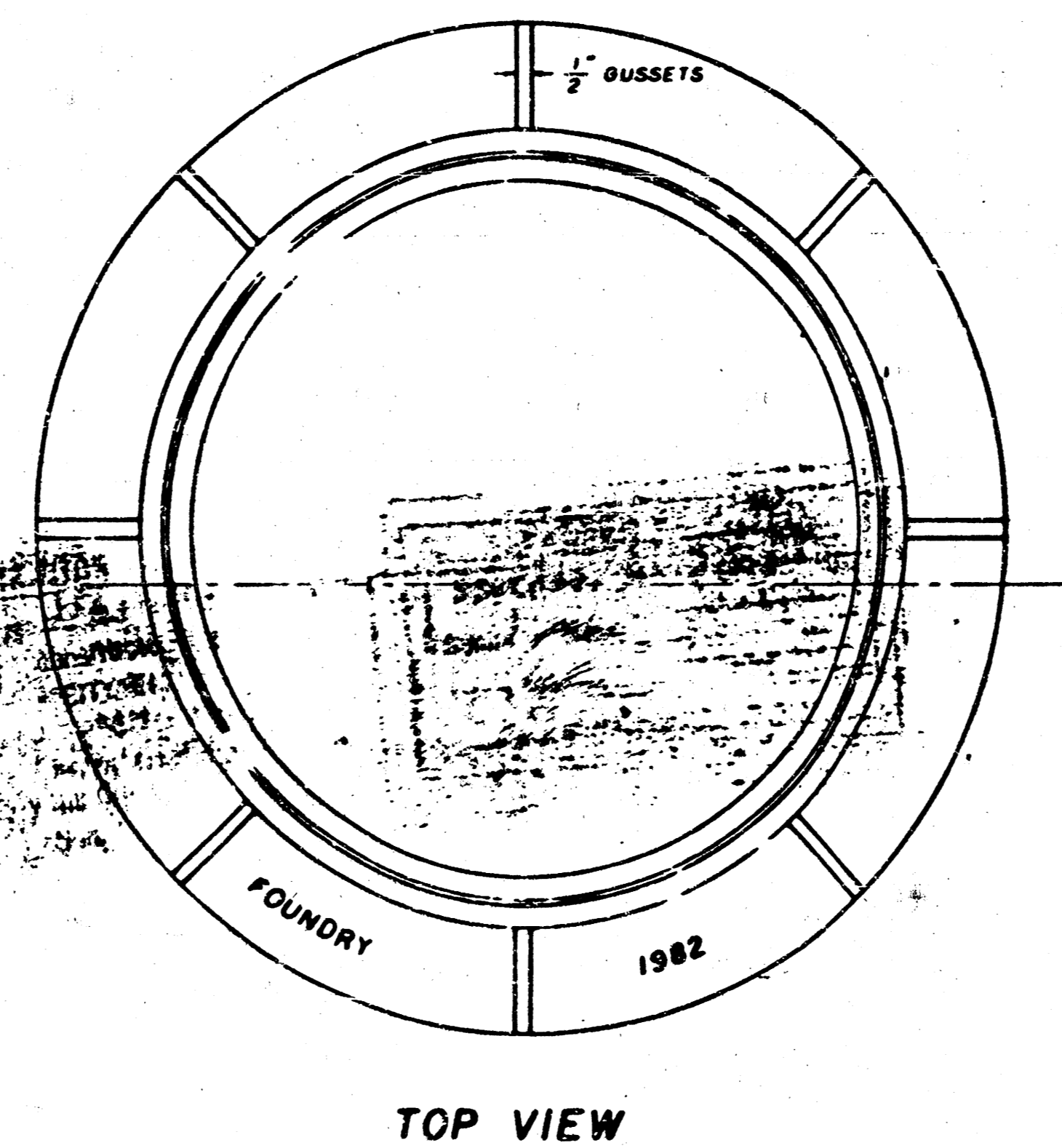
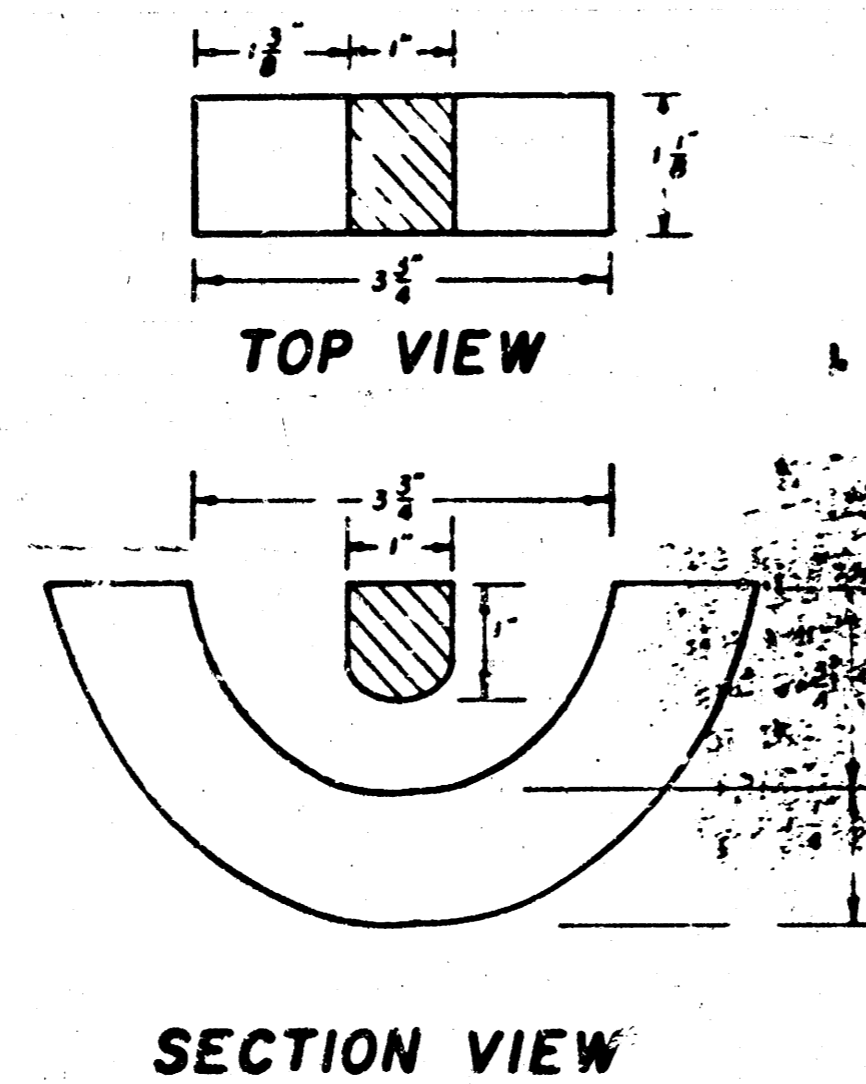


* OUTSIDE DIA TOP OF COVER
** OUTSIDE DIA BOTTOM OF COVER

MANHOLE FRAME

Weight: 240 Lbs.

PICKHOLE DETAIL



GENERAL NOTES

- MANHOLE CASTINGS SHALL BE MANUFACTURED USING GOOD QUALITY GRAY IRON CONFORMING TO CLASS 30 OF A.S.T.M. DESIGNATION A-48. DIMENSIONS AND WEIGHTS SHOWN ON THE DETAILED DRAWINGS SHALL BE CONSIDERED AS MINIMUM REQUIREMENTS AND ANY DEVIATIONS FROM THE DIMENSIONS SHOWN MUST BE SPECIFICALLY APPROVED. THE FINISHED CASTINGS SHALL BE OF UNIFORM QUALITY, FREE FROM BLOWHOLES, POROSITY, HARD SPOTS, SHRINKAGE DISTORTIONS OR OTHER DEFECTS.
- MANHOLE CASTINGS SHALL BE COATED WITH AN ASPHALT PAINT RESULTING IN A SMOOTH, TOUGH AND TENACIOUS COATING WHICH IS NOT BRITTLE OR TACKY.
- MANHOLE CASTINGS SHALL BE MANUFACTURED SUCH THAT A COVER MANUFACTURED BY ANY ONE FOUNDRY WILL FIT INTERCHANGEABLY INTO A FRAME MANUFACTURED BY ANOTHER FOUNDRY AND STILL MEET ALLOWABLE CLEARANCES AND NON-ROCKING REQUIREMENTS. THIS WILL REQUIRE MANUFACTURING OF THE MATCHING FACES OF THE COVER AND THE FRAME TO CLOSE TOLERANCES.
- THE OUTSIDE CIRCUMFERENCE OF THE VERTICAL FACE OF THE COVER AND THE INSIDE CIRCUMFERENCE OF THE VERTICAL FACE IN THE FRAME SHALL BE MANUFACTURED TO TOLERANCES SUCH THAT THE CLEARANCE BETWEEN THE COVER AND FRAME WILL NOT EXCEED 1/8" AT ANY POINT AROUND THE CIRCUMFERENCE OF THE COVER. THE SEATING SURFACES BETWEEN THE COVER AND FRAME SHALL BE MACHINED SUCH THAT THESE SURFACES SHALL MAKE FULL CONTACT FOR THEIR FULL CIRCUMFERENCE TO PRECLUDE THE COVER FROM ROCKING IN THE FRAME.
- THE MANHOLE FRAME AND COVER SHALL BE MARKED WITH LETTERING INDICATING THE NAME OF THE MANUFACTURER AND THE YEAR WHEN THE COVER OR FRAME WAS CAST. THE COVER SHALL BE FURTHER IDENTIFIED WITH REGARDS TO OWNERSHIP USING LETTERS AT LEAST 1" IN HEIGHT. THIS IDENTIFICATION SHALL BE "CITY OF WICHITA SEWER DEPARTMENT". THE WORD DEPARTMENT MAY BE ABBREVIATED. THE TEXTURE OF THE TOP SURFACE OF THE COVER SHALL BE MANUFACTURED IN A CHECKERED PATTERN DESIGN AS INDICATED ON THE DRAWINGS. SMOOTH BLOCKOUTS SHALL BE UTILIZED TO HIGHLIGHT THE LETTERING ON THE COVER SURFACE. THE TOTAL AREA OF SMOOTH SURFACE BLOCKOUT SHALL NOT EXCEED THE AREA AS INDICATED ON THE DRAWING. POSITIONING OF SMOOTH BLOCKOUTS AND LETTERING MAY VARY FROM THAT SHOWN ON THE DETAILED DRAWING.