

*Excavation*

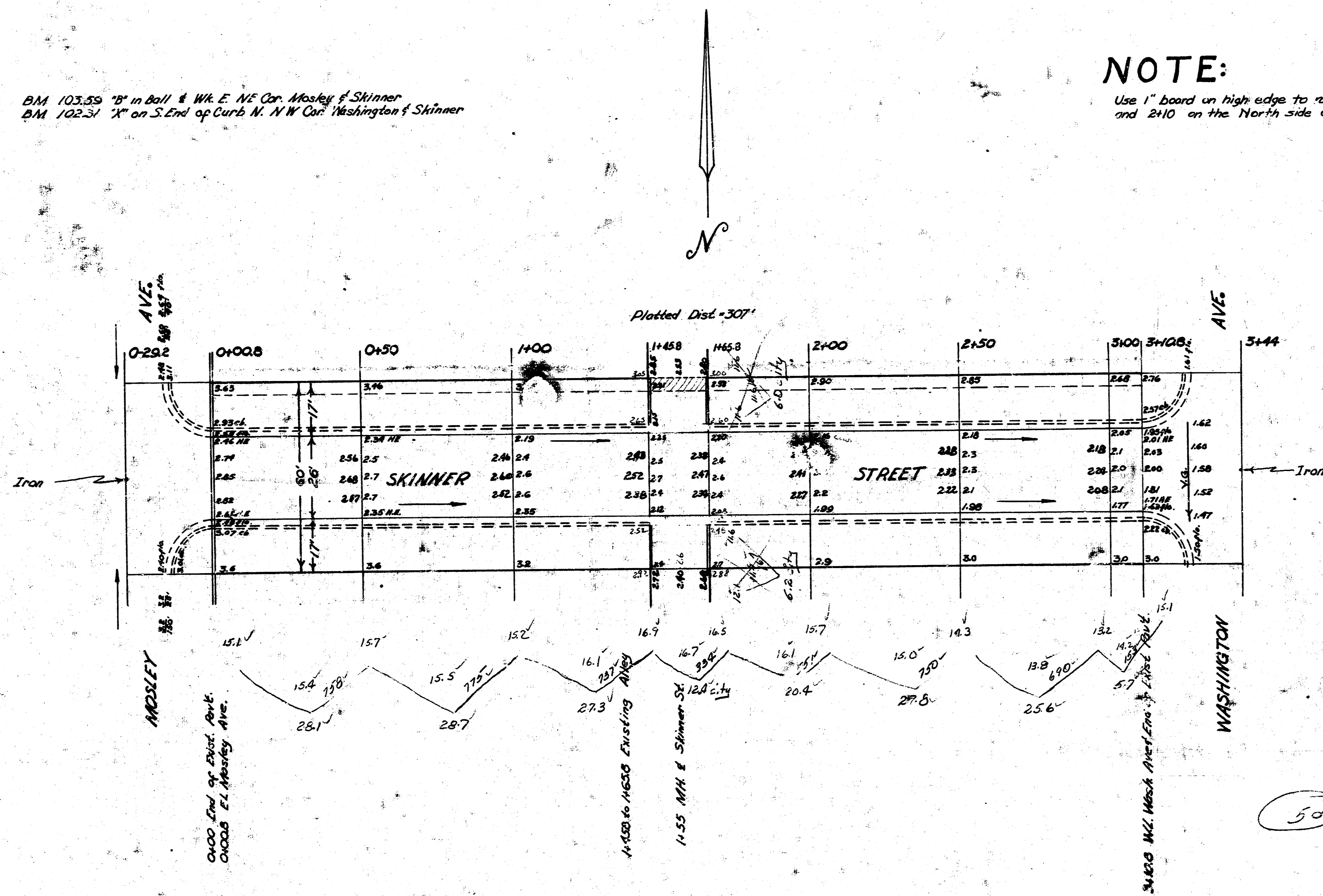
Property	City
28.1	12.4
28.2	6.0
27.3	6.2
20.4	29.6
22.8	2.5
25.6	102
5.7	27.1 cu yds.
163.6	
16.9	
146.7	

+108  
180.0 cu yds.

BM 103.55 12" in Ball & Wk. E. NE Cor. Mosley & Skinner  
 BM 102.34 12" on S. End of Curb N. NW Cor. Washington & Skinner

**NOTE:**

Use 1" board on high edge to raise pavement between Sta 0+60 and 2+10 on the North side of Street.



SKINNER ST.  
 ELMOSLEY to WIL. WASHINGTON  
 26' Conc. T"  
 CITY OF WICHITA KANSAS  
 L.N. White City Engineer  
 Jan, 1951 Proj. No. C10-210

