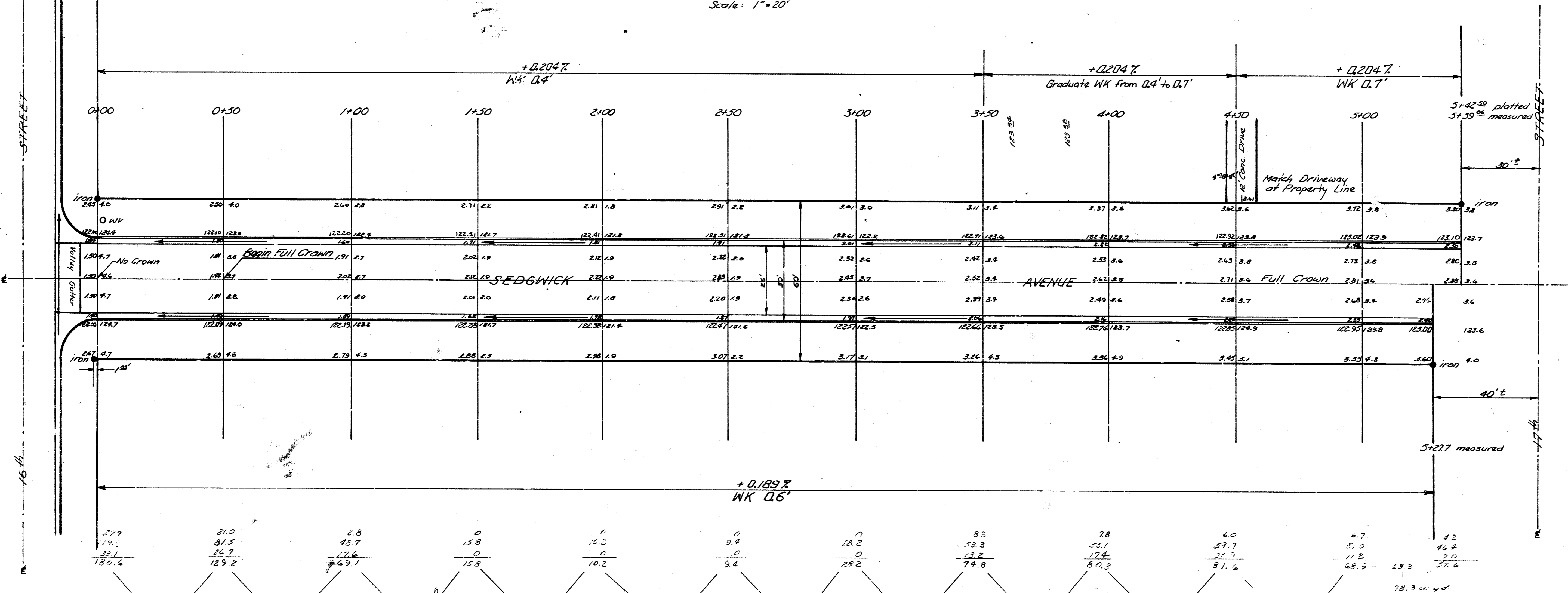
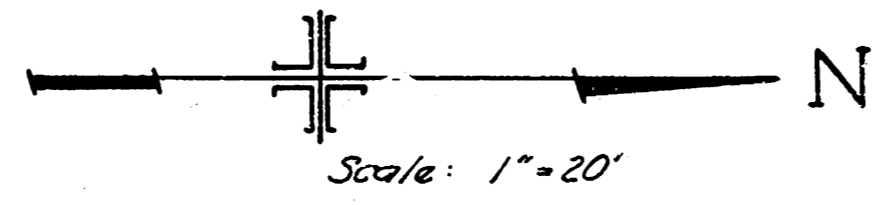


B.M. 12081 Top Catch Basin 12' S of N end radius NE 16th Meridian
 B.M. 12334 Standard at 17th Meridian
 Base Line along West Property Line of Sedgwick Avenue



Survey 16/7/77 BK 76317
 Plan Corrected 6/20/59
 Checked 1/77



Excavation
 Property Cut 1,232.9
 +10% 1,232.2
 1,356.2 cu yd



SEDGWICK AVENUE
 N.L. 16TH STREET - S.L. 17TH STREET
 26'-2"-30" ASPH. CONC.
 CITY OF WICHITA, KANSAS
 B.E. SMITH CITY ENGINEER
 DATE: July 6, 1959 PROJ. NO. C19-71