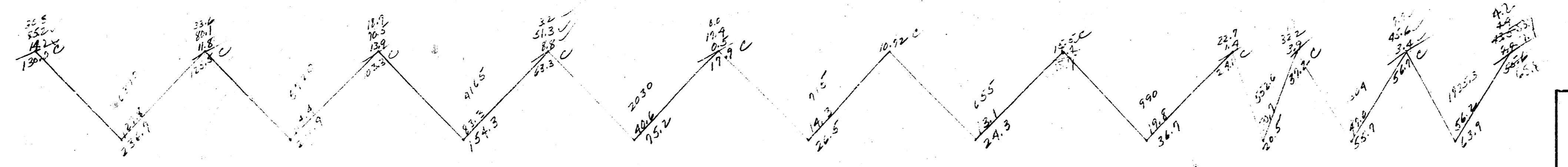
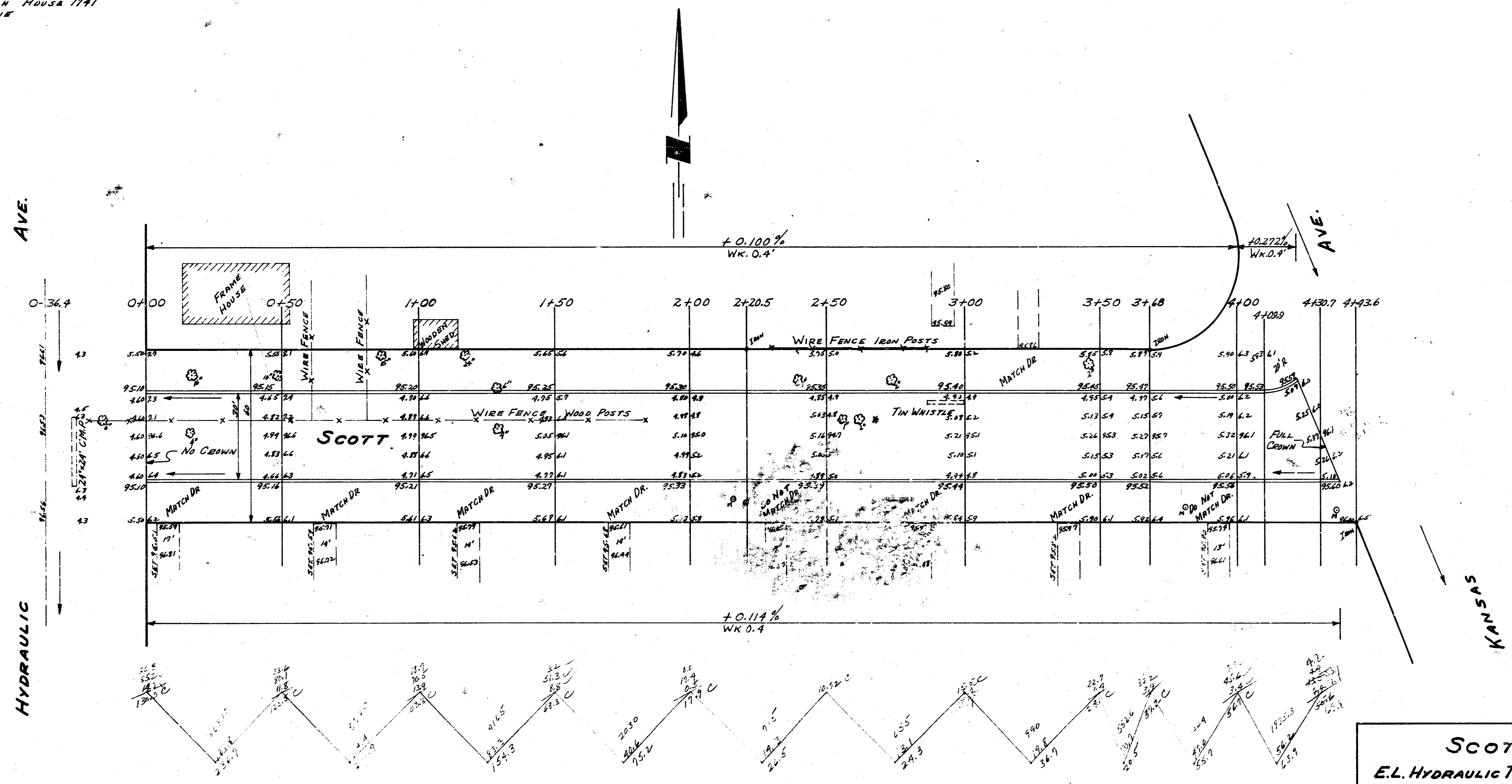


B.M. 99.46 S.E. CORNER PORCH HOUSE 2327 S HYDRAULIC
 B.M. 98.16 N.E. CORNER CONC. PORCH HOUSE 1741
 CHIRPING E ON SOUTH PROP LINE

STUDY 8/11/54 BK 60
 PLAN BY B.E. SMITH
 CHECKED 7/7



PROPERTY
 CUI
 70.5.7
 70.6
 796.3 CU YDS CUT.



SCOTT
 E.L. HYDRAULIC TO W.L. KANSAS
 30' CONC & CB.
 CITY OF WICHITA KAN.
 B.E. SMITH CITY ENGINEER
 AUG. 1954 Proj. No C13-287