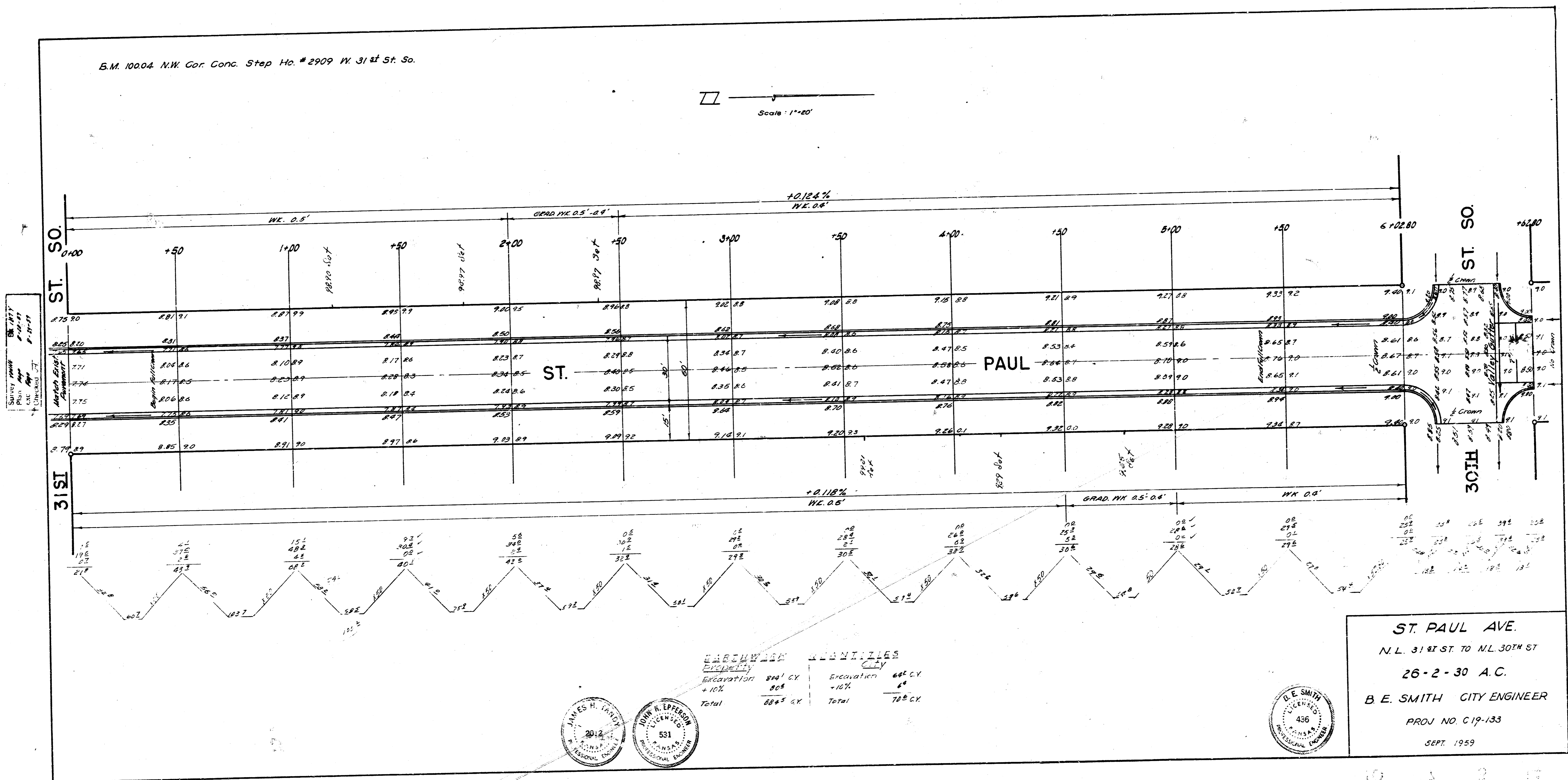


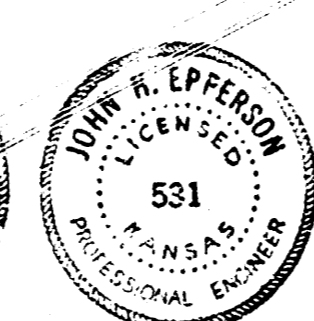
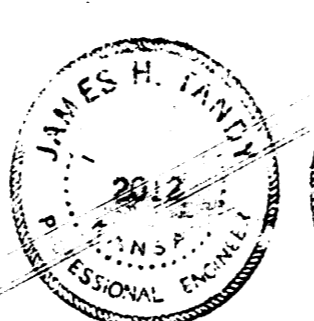
B.M. 100.04 NW Cor. Conc. Step Ho. # 2909 W. 31st St. So.

Scale: 1"=20'



Survey done  
 by  
 C.E. Smith  
 8-19-59  
 Checked by  
 B.E. Smith

EXISTING		PROPOSED	
Excavation	894 CY	Excavation	648 CY
+10%	868	+10%	603
Total	884.5 CY	Total	708 CY



**ST. PAUL AVE.**  
 N.L. 31st ST. TO N.L. 30th ST  
 26-2-30 A.C.  
 B. E. SMITH CITY ENGINEER  
 PROJ. NO. C 19-133  
 SEPT. 1959