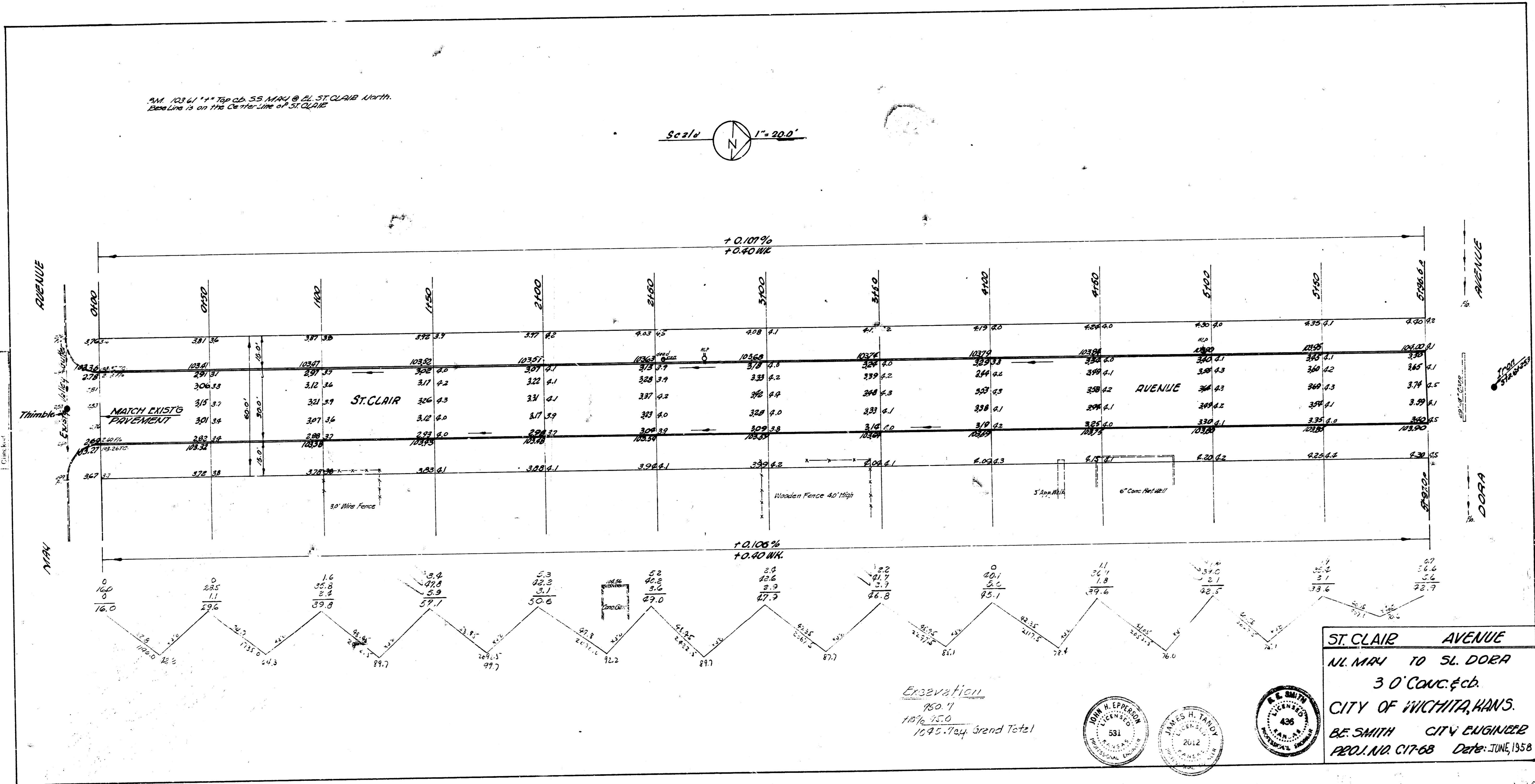
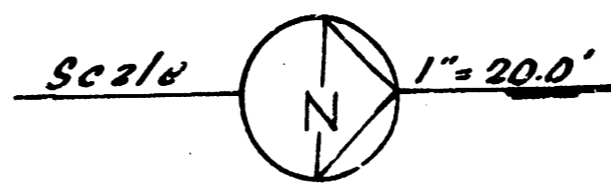
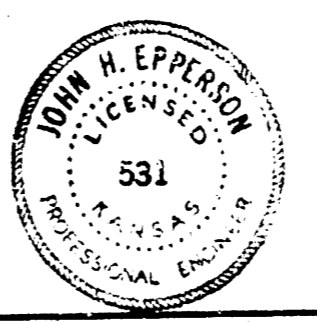


PM 103.61** Top of 55' MARY @ EL ST. CLAIR North.
 Base Line is on the Center Line of ST. CLAIR



Subway G. DOWD 128' U
 1' Pipe 5' Seal
 1' Clear

Elevation
 150'
 1076.75.0
 1695.704 Grand Total



ST. CLAIR AVENUE
 N. MARY TO S. DORA
 3' 0" CONC. & C&G
 CITY OF WICHITA, KANS.
 B.E. SMITH CITY ENGINEER
 PROJ. NO. C17-68 Date: JUNE, 1958