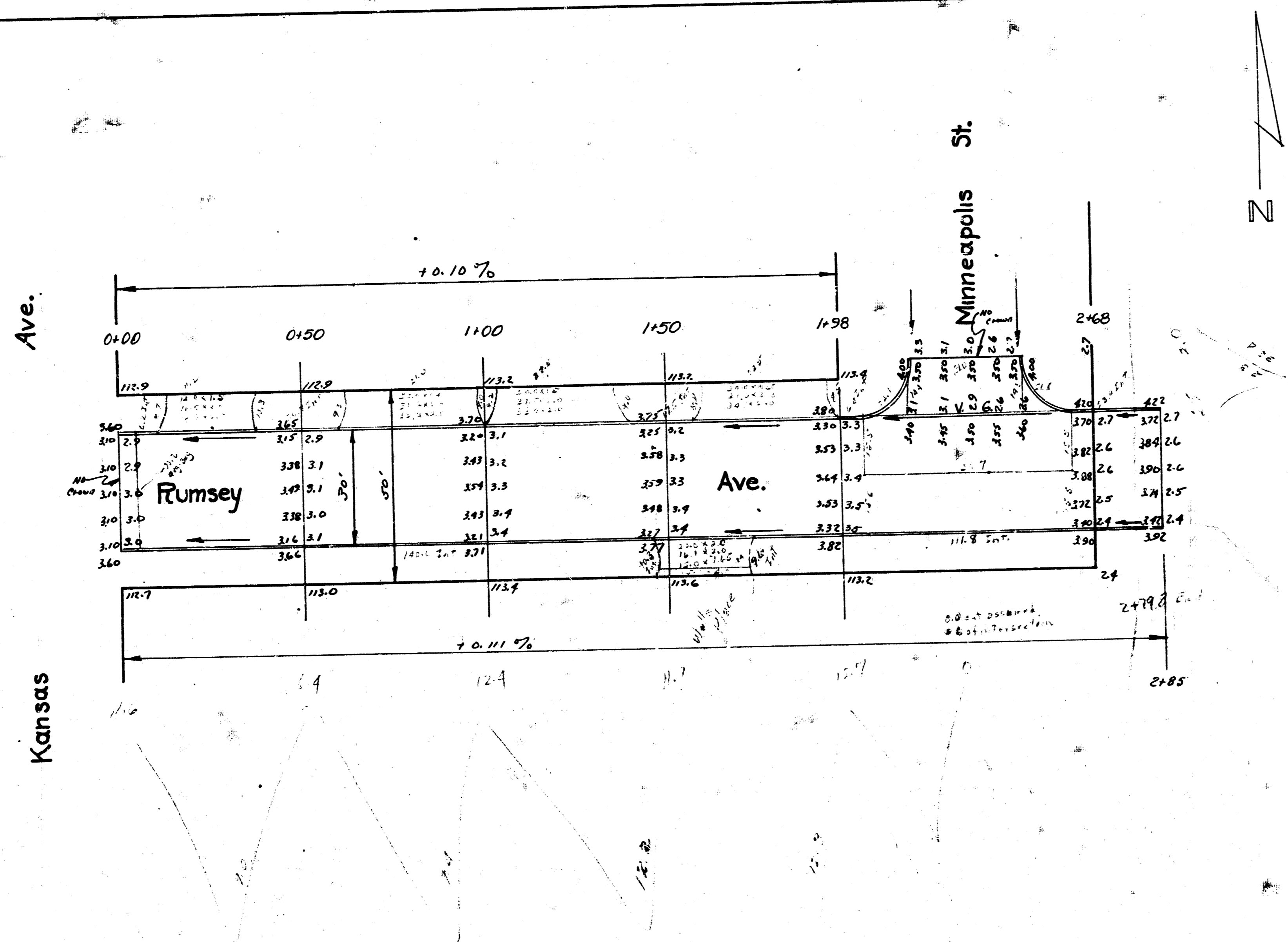


394

B.M. 11635 7' in Mueller, 1st hyd. N.W. corner Hydraulic #11th.

NOTE: -
Any fill under pavement to be stabilized by mixing
1/2 sand with 1/2 dirt & compacting with sheep-
foot roller.



Rumsey Ave.
 E.L. Kans. to 17' E. of E.L. Minneapolis
 30' conc & cb.
 City of Wichita, Kansas
 L.K. White - City Engineer
 October 1950 Private Job

4 e 4 55