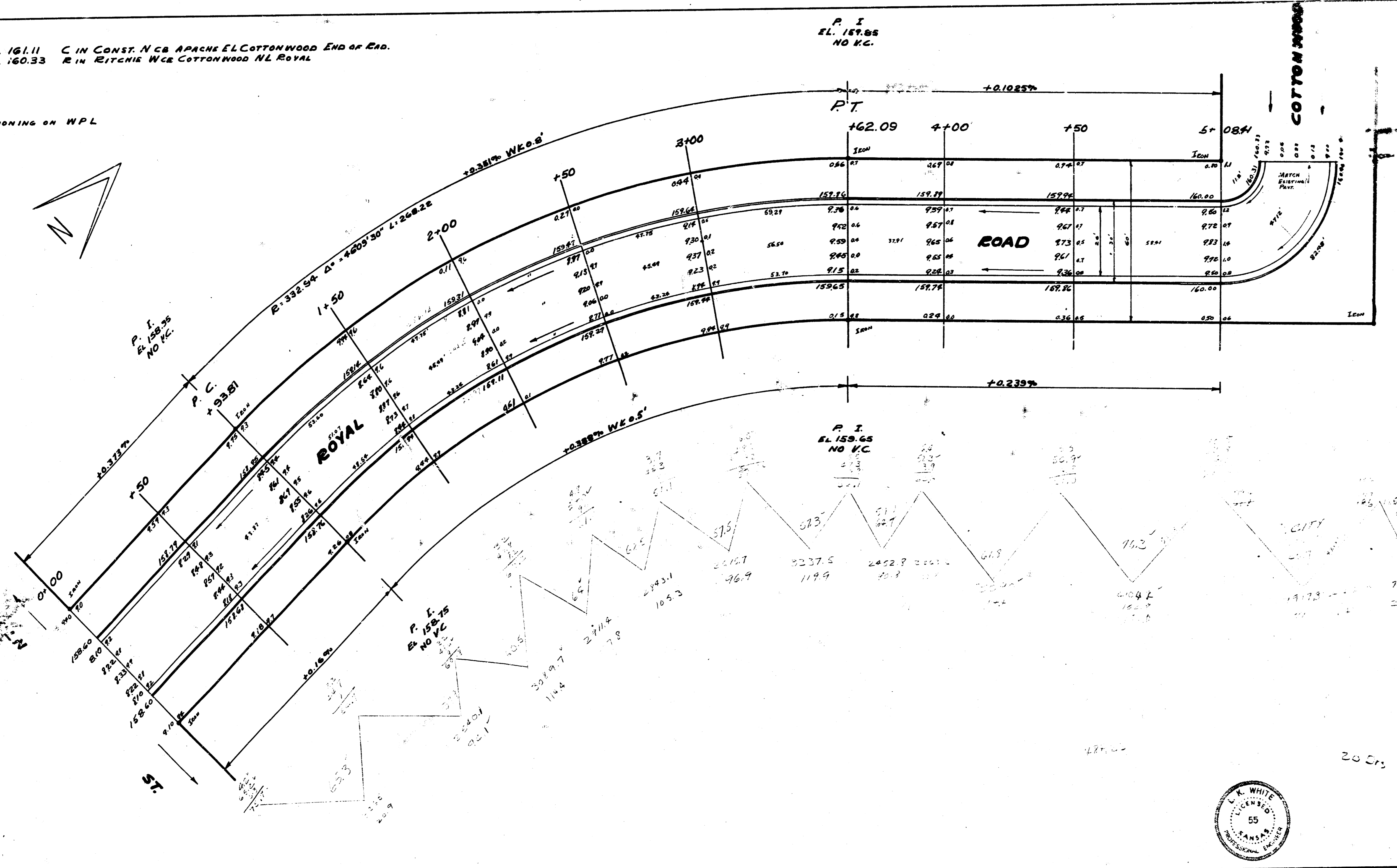
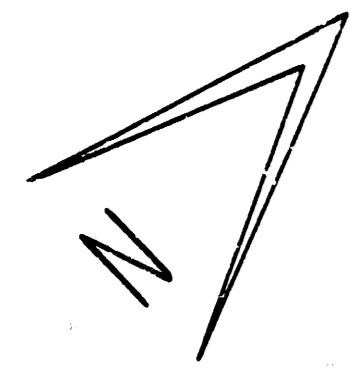


CHM-81

B.M. 161.11 C IN CONST. N CB APACHE EL COTTONWOOD END OF EAD.
 B.M. 160.33 R IN RITCHIE WCB COTTONWOOD NL ROYAL

STATIONING ON WPL



ROYAL ROAD
 ALL LINCOLN TO S. COTTONWOOD INTERSECTION
 26-2-30 AC.
 CITY OF WICHITA KANS.
 L.K. WHITE CITY ENGINEER
 MAY 1952 PROJ. NO. C12-26

