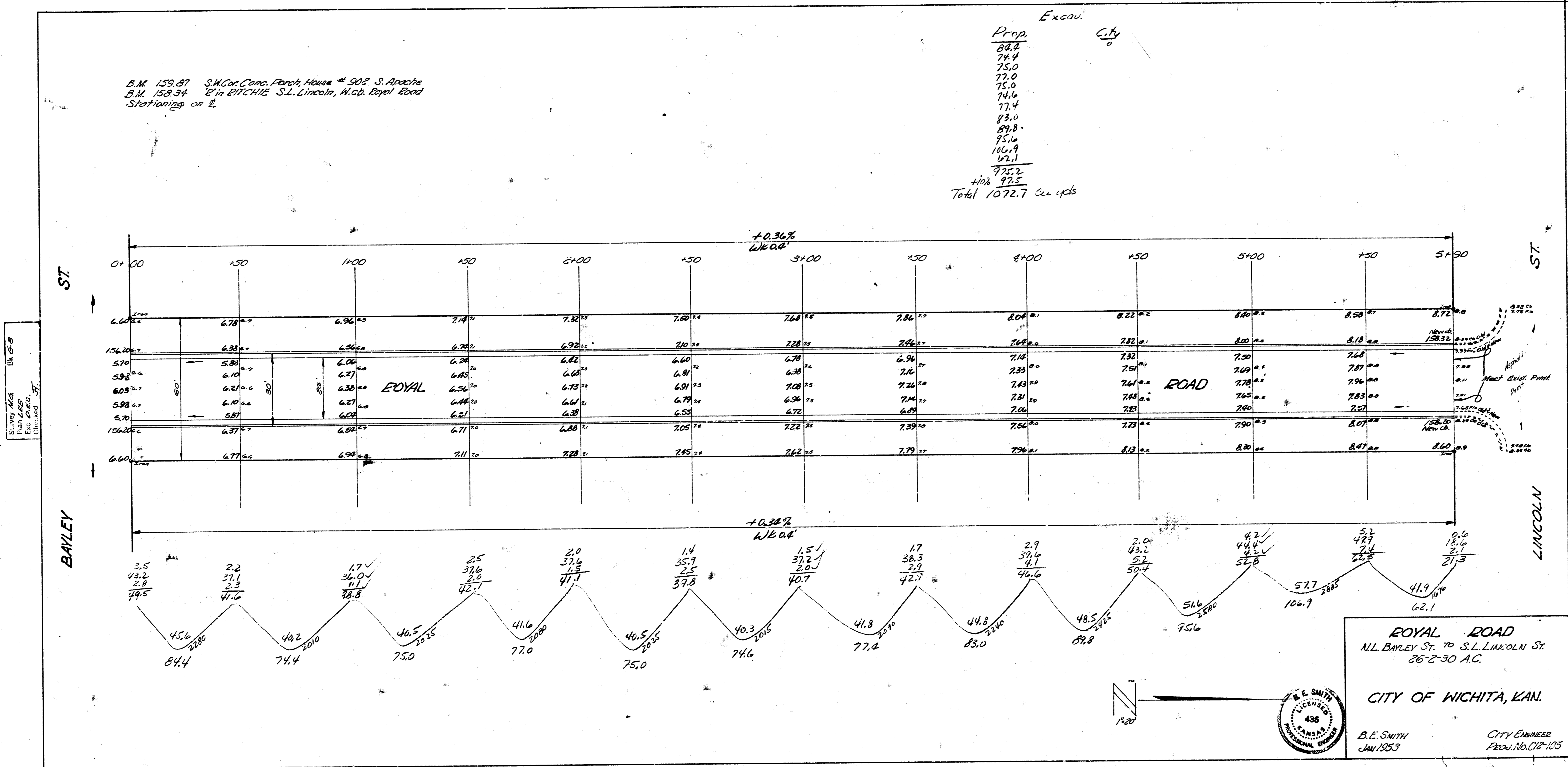


B.M. 159.87 S.W. Cor. Conc. Porch, House # 902 S. Archer
 B.M. 159.34 E. in FITCHIE S.L. Lincoln, W. ab. Royal Road
 Stationing as E.

Excav. City
 Prop.
 84.4
 74.4
 75.0
 77.0
 75.0
 74.6
 77.4
 83.0
 89.8
 75.6
 106.9
 62.1
 975.2
 +102 93.5
 Total 1072.7 cu yds



ROYAL ROAD
 N.L. BAYLEY ST. TO S.L. LINCOLN ST.
 26'-2'-30" A.C.

CITY OF WICHITA, KAN.

B.E. SMITH
 Jan 1953
 CITY ENGINEER
 PROJ. NO. 012-105

