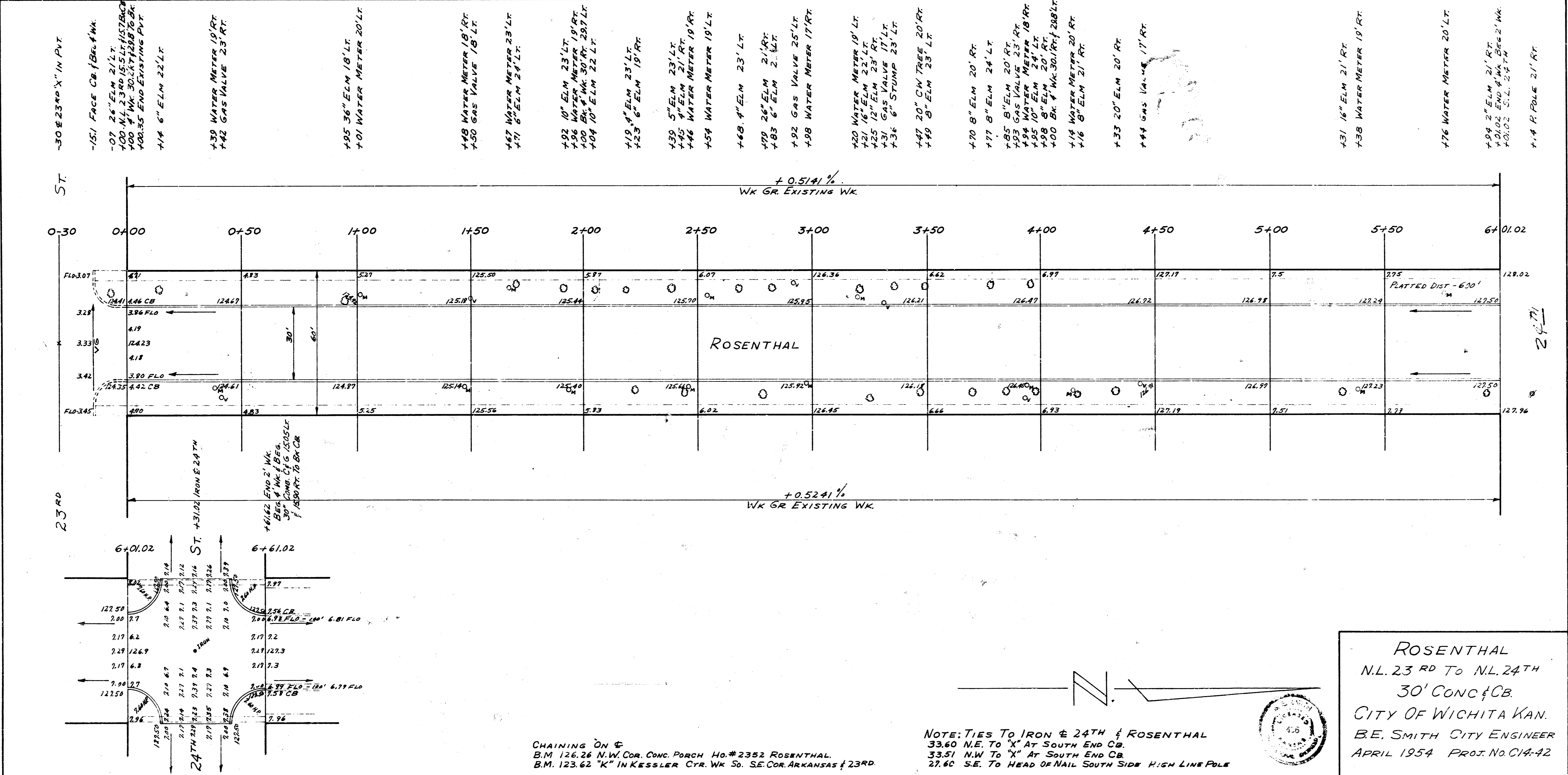
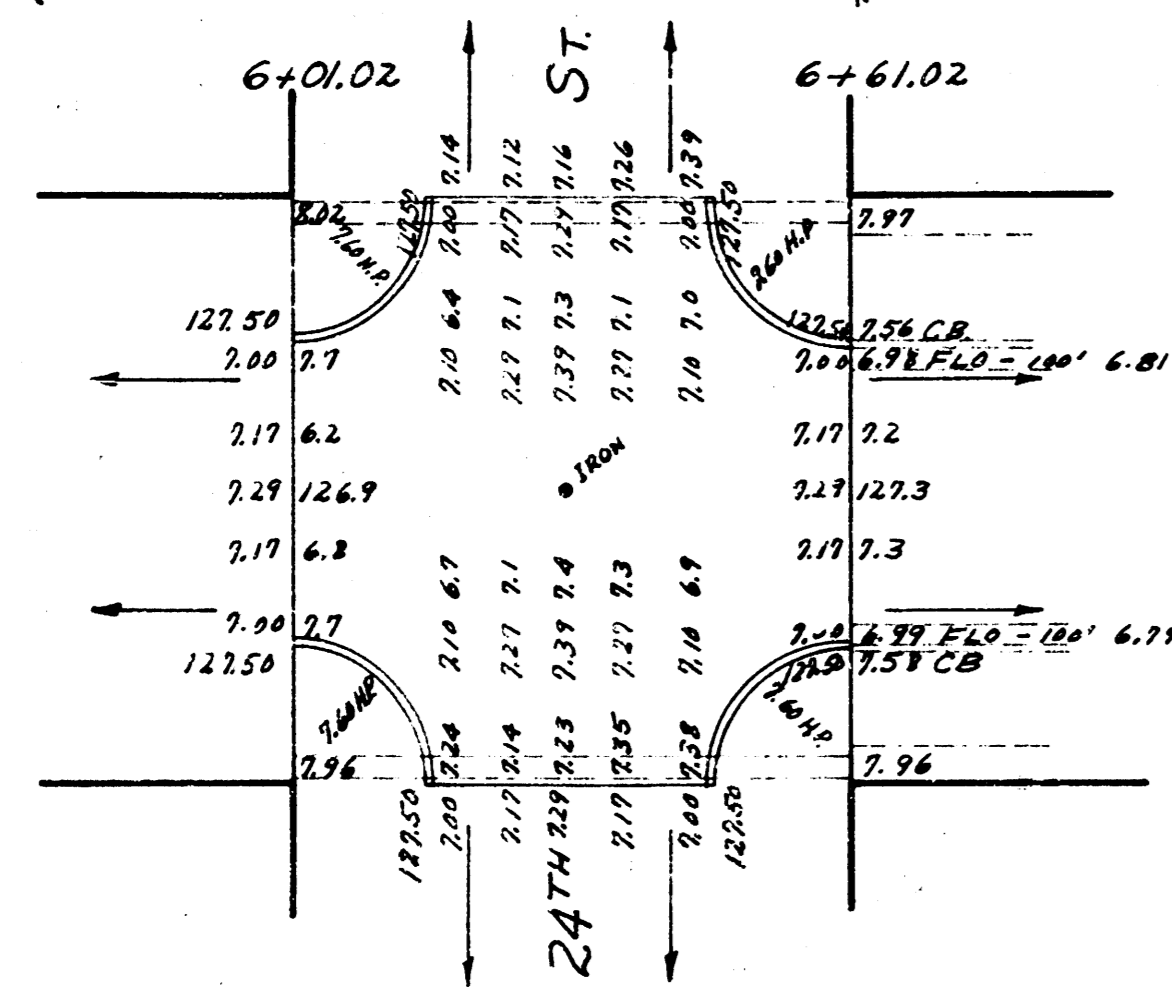


BK  
 Survey  
 Plan  
 Checked



- 30" x 23" x 40" X" IN. P.V.
- 151' FACE CB (Bk) Wk.
- 07' 24" ELM 2' LT.
- 100' N.L. 23" RD 15.5' (15.5' Bk)
- 100' 4" Wk 30' LT (15.5' Bk)
- 100.35' END EXISTING P.V.
- 114' 6" ELM 22' LT.
- 439' WATER METER 19' RT.
- 442' GAS VALVE 23' RT.
- 495' 36" ELM 18' LT.
- 701' WATER METER 20' LT.
- 448' WATER METER 18' RT.
- 450' GAS VALVE 18' LT.
- 457' WATER METER 23' LT.
- 471' 8" ELM 24' LT.
- 492' 10" ELM 23' LT.
- 496' WATER METER 19' RT.
- 400' Bk 4" Wk 30' RT 23' LT.
- 404' 10" ELM 22' LT.
- 419' 4" ELM 23' LT.
- 423' 6" ELM 19' RT.
- 439' 5" ELM 23' LT.
- 445' 4" ELM 21' RT.
- 446' WATER METER 19' RT.
- 454' WATER METER 19' LT.
- 468' 4" ELM 23' LT.
- 499' 24" ELM 21' RT.
- 483' 6" ELM 2' LT.
- 492' GAS VALVE 25' LT.
- 498' WATER METER 17' RT.
- 420' WATER METER 19' LT.
- 421' 16" ELM 22' LT.
- 425' 12" ELM 23' RT.
- 431' GAS VALVE 17' LT.
- 436' 6" STUMP 23' LT.
- 447' 20" CM TREE 20' RT.
- 449' 8" ELM 23' LT.
- 470' 8" ELM 20' RT.
- 477' 8" ELM 24' LT.
- 485' 8" ELM 20' RT.
- 493' GAS VALVE 23' RT.
- 494' WATER METER 18' RT.
- 498' 18" ELM 20' RT.
- 400' Bk 4" Wk 30' RT 23' LT.
- 414' WATER METER 20' RT.
- 416' 8" ELM 21' RT.
- 433' 20" ELM 20' RT.
- 444' Gas Valve 17' RT.
- 431' 16" ELM 21' RT.
- 438' WATER METER 19' RT.
- 476' WATER METER 20' LT.
- 498' 27" ELM 21' RT.
- 401.02' END 4" Wk 30' RT 23' LT.
- 401.02' S.L. 24' W.
- 414' R. POLE 21' RT.



CHAINING ON &  
 B.M. 126.26 N.W. COR. CONC. PORCH HO. #2352 ROSENTHAL.  
 B.M. 123.62 "K" IN KESSLER CYR. Wk 50. S.E. COR. ARKANSAS & 23RD

NOTE: TIES TO IRON & 24TH & ROSENTHAL  
 33.60' N.E. TO "X" AT SOUTH END CB.  
 33.51' N.W. TO "X" AT SOUTH END CB.  
 27.60' S.E. TO HEAD OF NAIL SOUTH SIDE HIGH LINE POLE



ROSENTHAL  
 N.L. 23 RD TO N.L. 24TH  
 30' CONC & CB  
 CITY OF WICHITA KAN.  
 B.E. SMITH CITY ENGINEER  
 APRIL 1954 PROJ. NO. C14-42