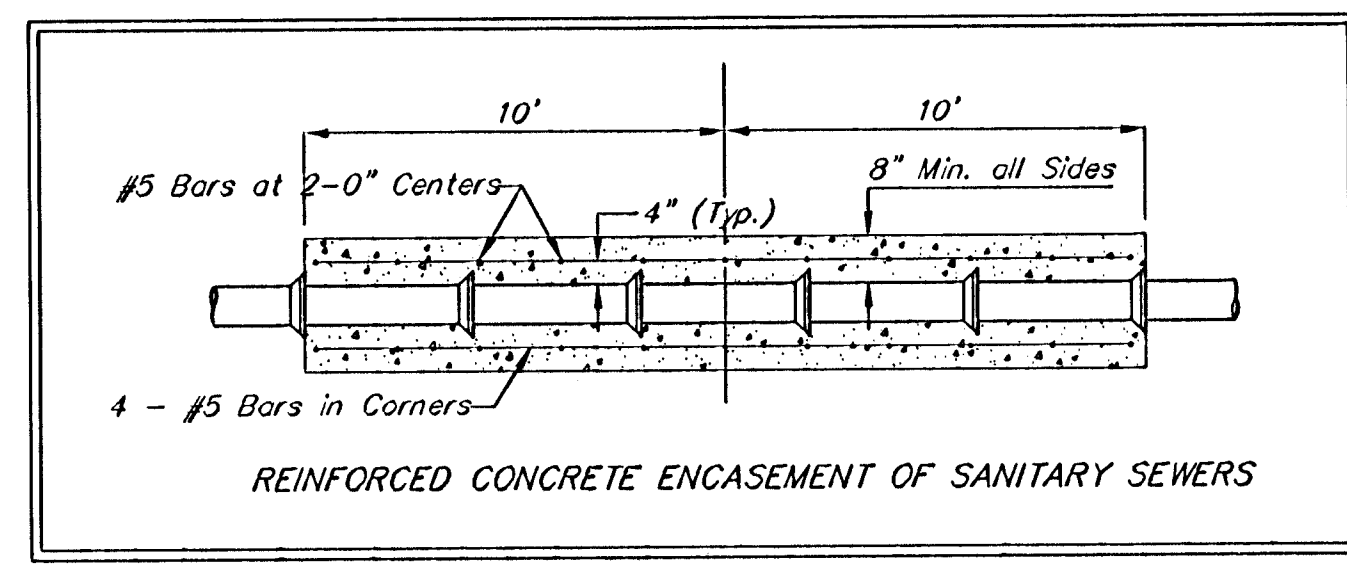


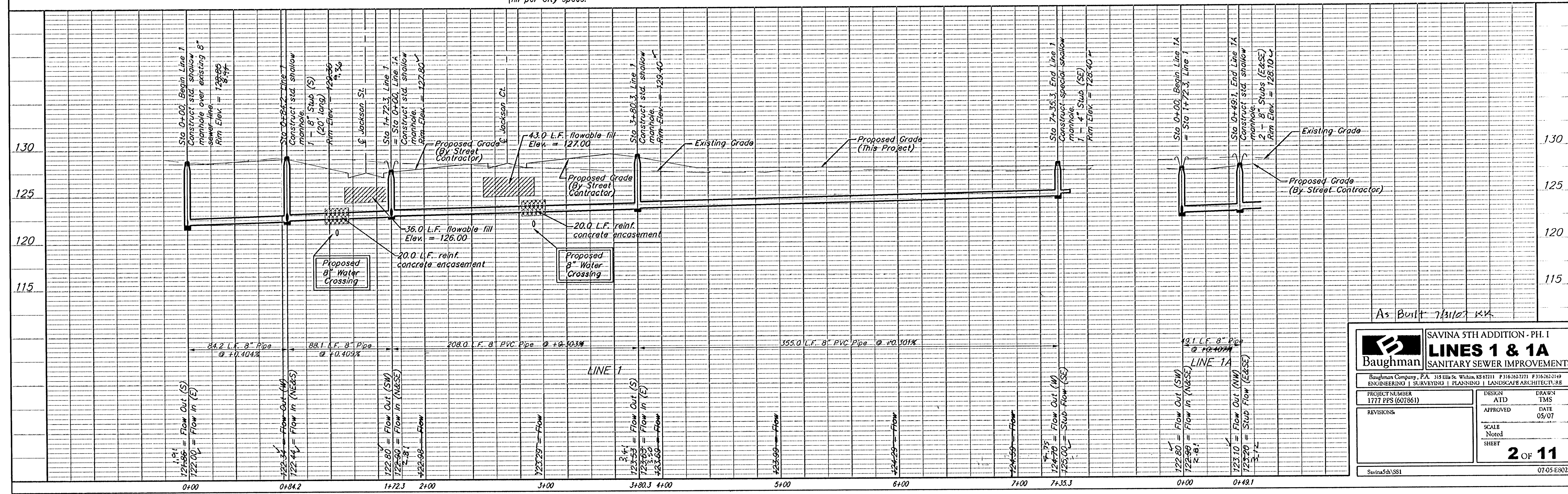
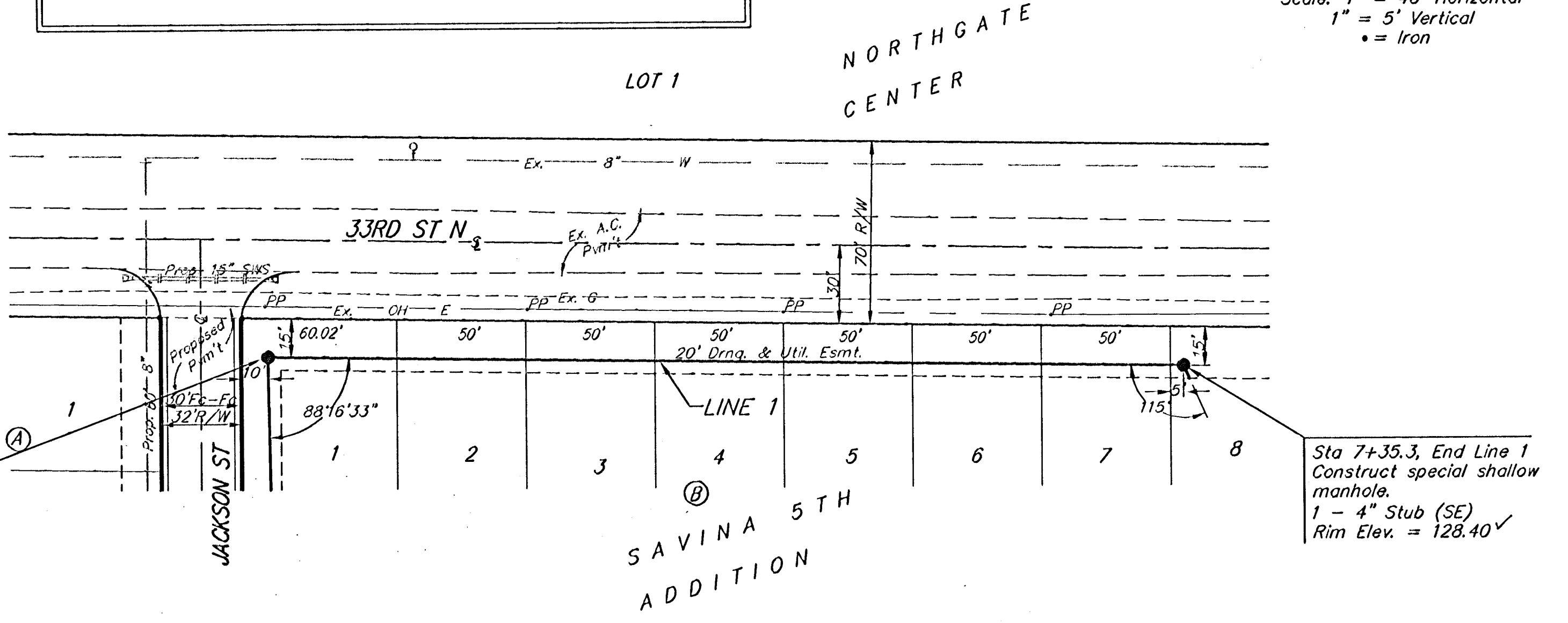
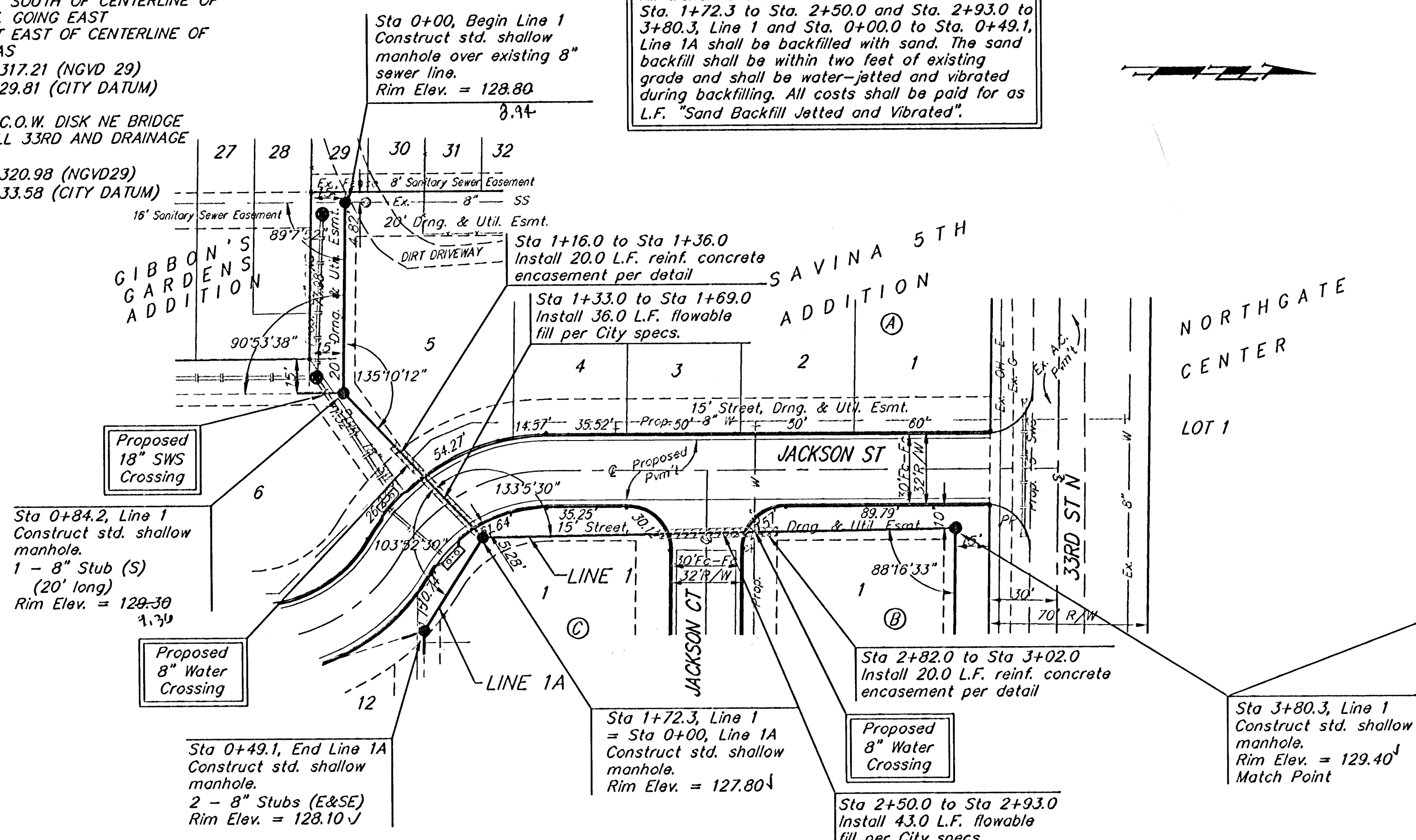
BENCHMARK:
 BM #1: ARKANSAS AND 33RD ST. N.
 C.O.W. BENCHMARK
 32.00 FT SOUTH OF CENTERLINE OF
 33RD ST. GOING EAST
 22.00 FT EAST OF CENTERLINE OF
 ARKANSAS
 ELEV= 1317.21 (NGVD29)
 ELEV= 129.81 (CITY DATUM)

BM #2: C.O.W. DISK NE BRIDGE
 HEADWALL 33RD AND DRAINAGE
 CANAL
 ELEV= 1320.98 (NGVD29)
 ELEV= 133.58 (CITY DATUM)

All trench and manhole excavation areas from
 Sta. 1+72.3 to Sta. 2+50.0 and Sta. 2+93.0 to
 3+80.3, Line 1 and Sta. 0+00.0 to Sta. 0+49.1,
 Line 1A shall be backfilled with sand. The sand
 backfill shall be within two feet of existing
 grade and shall be water-jetted and vibrated
 during backfilling. All costs shall be paid for as
 L.F. "Sand Backfill Jetted and Vibrated".



Scale: 1" = 40' Horizontal
 1" = 5' Vertical
 • = Iron



As Built 7/31/07 KJA

Baughman SAVINA 5TH ADDITION - PH. I
LINES 1 & 1A
 SANITARY SEWER IMPROVEMENTS

Baughman Company, P.A. 315 Ellis St. Wichita, KS 67211 P 316-262-7271 F 316-262-0149
 ENGINEERING | SURVEYING | PLANNING | LANDSCAPE ARCHITECTURE

PROJECT NUMBER: 1771 PPS (607861) DESIGN: ATD DRAWN: TMS
 APPROVED: DATE: 05/07

REVISIONS: SCALE: Noted
 SHEET: **2 OF 11**

Savina5th/SSI 07-05-E802