

CONSTRUCTION PLANS FOR PRIVATE STORM SEWER TO SERVE NORTHWEST METHODIST ADDITION TO THE CITY OF WICHITA, KANSAS

JAMES ARMOUR, P.E. - CITY ENGINEER
1725 PPS (607861)

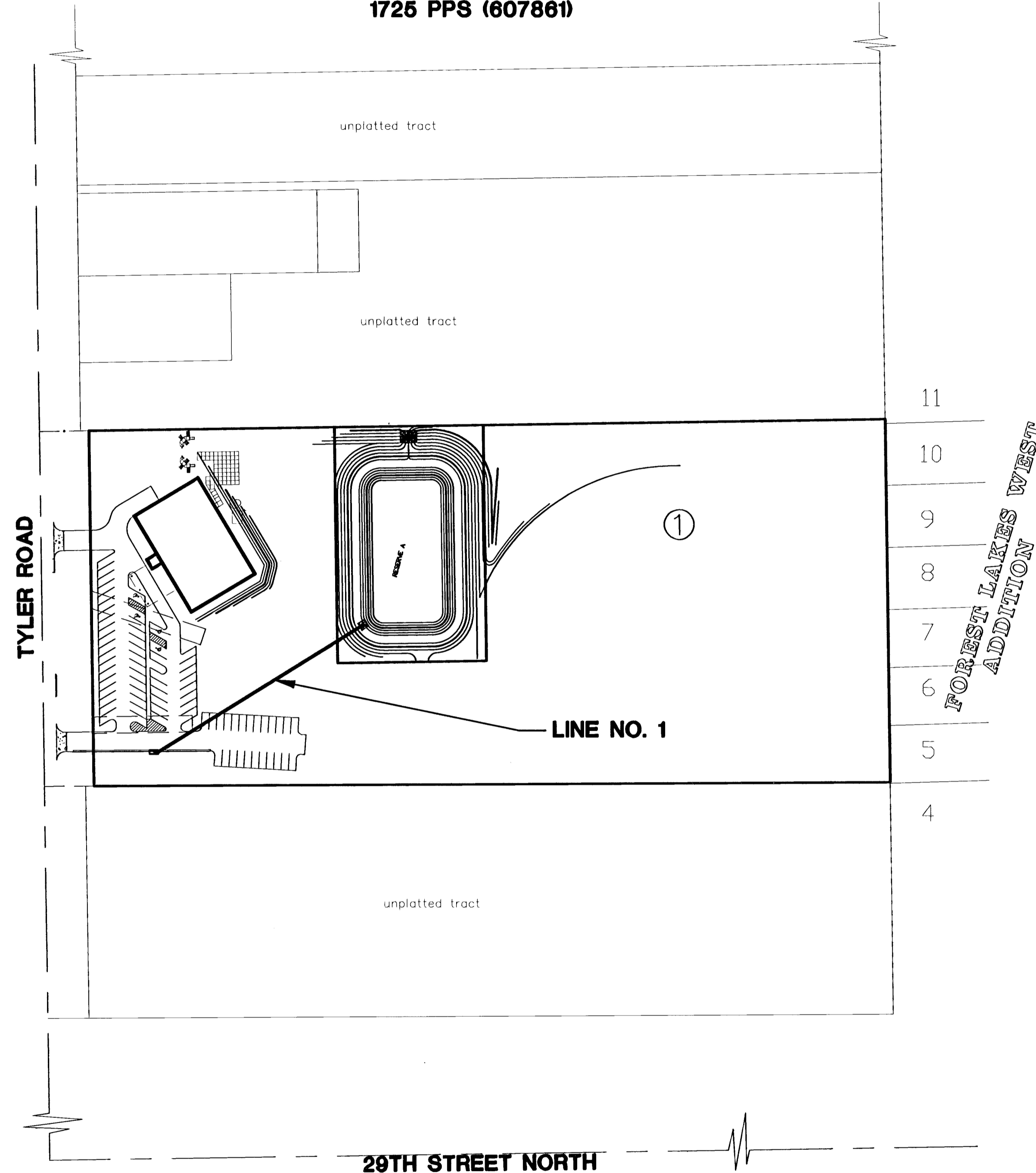
GENERAL NOTES

- Contractor will be required to provide a minimum advance notice of twenty-four (24) hours to utility companies prior to starting any excavation as follows:

Kansas One-Call	1-800-344-7233
-----------------	----------------

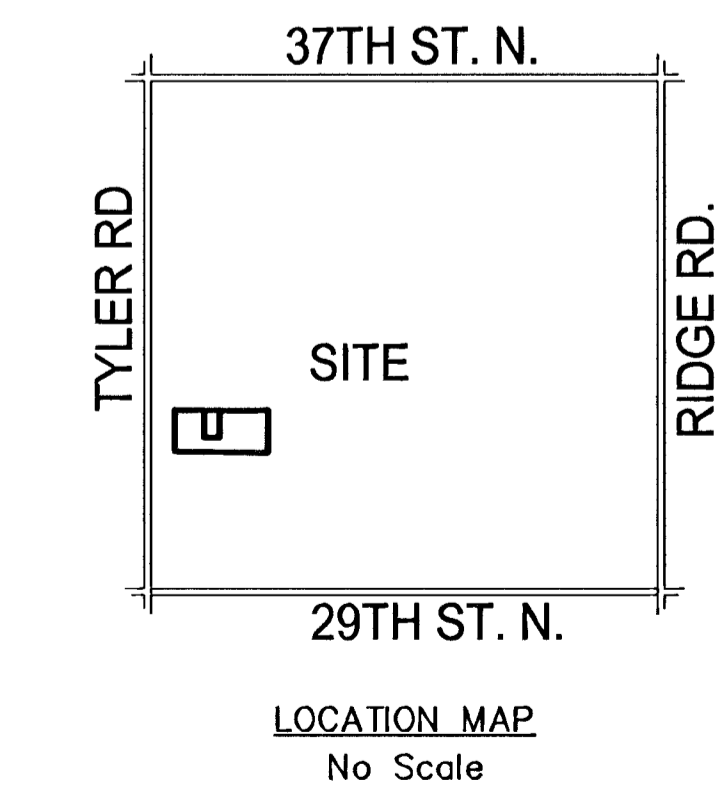
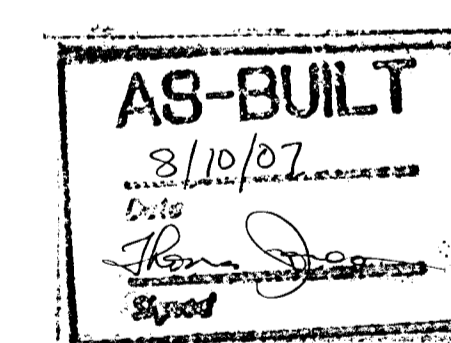
The Contractor must notify the following in case of an emergency:

Cox Cable	262-4270 or 263-2061
Kansas Gas & Electric - Gas	263-7511
Kansas Gas & Electric - Electric	264-1141
Arkla Gas Company	942-8350 or 263-8161
Southwestern Bell Tel. Co.	1-571-2611
City of Wichita Water Department	268-4908
City of Wichita Sewer Maintenance	268-4071
- Existing utility lines and their location, as shown on the plans, represent the best information obtainable for design. The contractor will be required to work around existing utilities within the right-of-way which do not conflict with proposed construction.
- The Contractor to verify utility locations prior to construction of this project.
- Utility service and installation shall be coordinated with the respective utility owners.
- All areas disturbed by construction shall be seeded with rye Rebel II Fescure grass at a rate of 350 lbs./acre immediately following construction in that area.
- Traffic affected by the construction of this project shall be handled in accordance with the latest edition of the Manual on Uniform Traffic Control Devices.
- All lawn/turf areas disturbed by construction of proposed improvements shall be restored with the same grass/ sod as existing. Restoration of disturbed areas shall include, but not be limited to, top soil preparation, seeding, mulch and/or reseeded. All seeding/sodding work shall be in accordance with the City of Wichita standard specifications and the City of Wichita administrative regulation No. AR78 which governs cleanup and replacement following construction. All costs for this work shall be subsidiary to the lump sum price bid for "Site Restoration."
- Existing flowline information obtained from city records.



INDEX

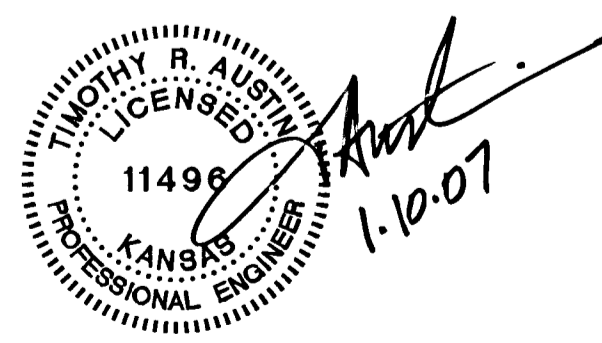
TITLE SHEET	SHEET 1
LINE NO. 1	SHEET 2
INLET DETAILS	SHEET 3
EROSION CONTROL DETAILS	SHEET 4-6
STORM WATER POLLUTION PREVENTION PLAN	SHEET 7
GRADING PLAN	SHEET 8
DRAINAGE PLAN	SHEET 9
COPY OF PLAT	SHEET 10



APPROVED AS NOTED BY CITY ENGINEER OF WICHITA

STORM SEWER H.C. Ark 1/10/07

Inspection and testing for this project are to be provided by a Licensed Consulting Engineering Firm under contract with the Owner/Developer. Said inspection is to be in accordance with the City of Wichita standard construction engineering practices and certified by a Licensed Professional Engineer. No work shall be performed in dedicated easements or public right-of-way by the Contractor without such inspection nor shall work be commenced without written authorization by the City Engineer. All construction and materials shall comply with the City of Wichita Specifications and Standards (on file and available in the City Engineer's Office).



JANUARY 2007

PLANS PREPARED
BY



POE & ASSOCIATES, INC.
CONSULTING ENGINEERS
5940 E. Central, Suite 200 ■ Wichita, KS 67208-4242
Phone 316/685-4114 ■ FAX 316/685-4444

BENCH MARKS

- City of Wichita Datum
- City of Wichita BM#1, Pnt.#140 Bench Mark. Tee Time and 29th St. North, NW corner of bridge, NW corner of wing wall.
Elev. = 142.20 (City of Wichita Datum)