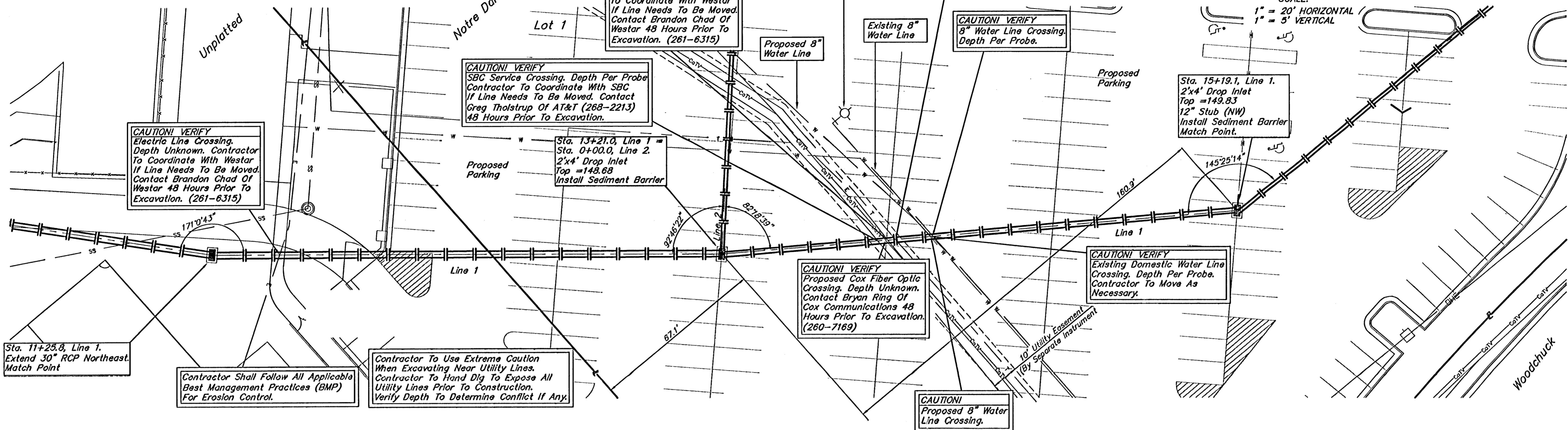


Bench Marks:

Woodchuck & Central
City of Wichita Bench Mark.
52.00 ft. North of center line.
24.00 ft. West of center line.
Elevation = 154.05 (City Datum)



Sta. 11+25.8, Line 1.
Extend 30" RCP Northeast.
Match Point

Contractor Shall Follow All Applicable
Best Management Practices (BMP)
For Erosion Control.

Contractor To Use Extreme Caution
When Excavating Near Utility Lines.
Contractor To Hand Dig To Expose All
Utility Lines Prior To Construction.
Verify Depth To Determine Conflict If Any.

CAUTION! VERIFY
SBC Service Crossing. Depth Per Probe
Contractor To Coordinate With SBC
If Line Needs To Be Moved. Contact
Greg Tholstrup Of AT&T (268-2213)
48 Hours Prior To Excavation.

CAUTION! VERIFY
Electric Line Crossing. Depth
Per Probe. Contractor
To Coordinate With Westar
If Line Needs To Be Moved.
Contact Brandon Chad Of
Westar 48 Hours Prior To
Excavation. (261-6315)

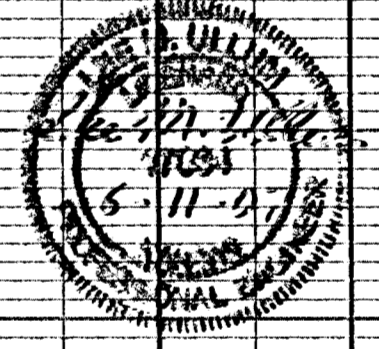
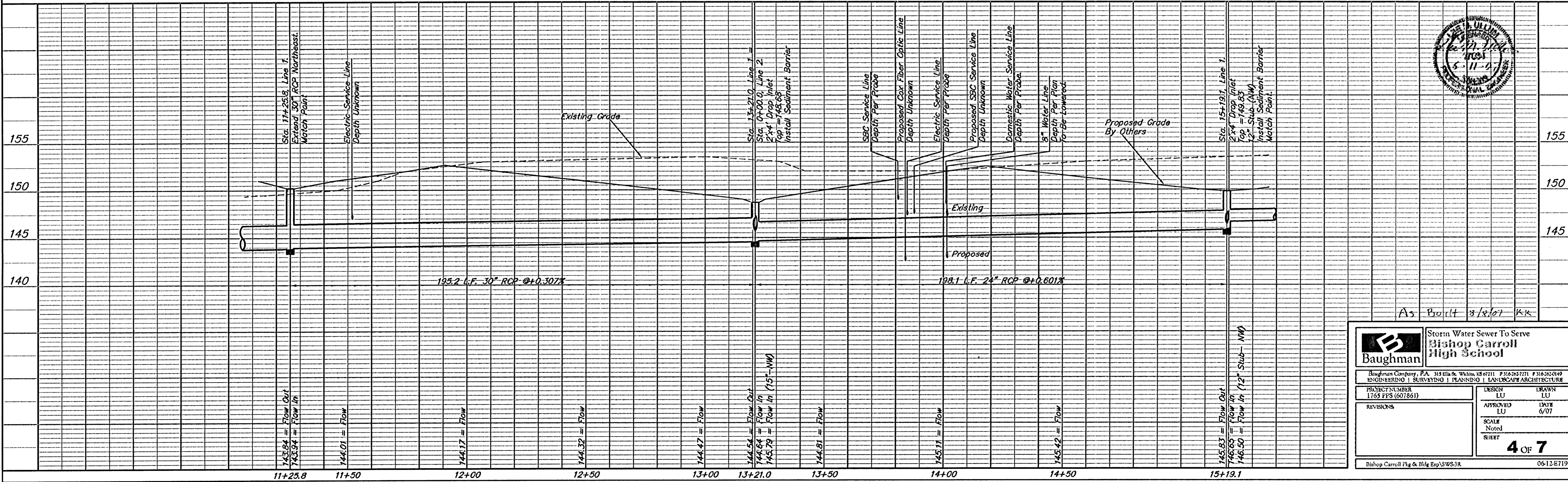
CAUTION! VERIFY
Proposed SBC Service Crossing.
Contact Greg Tholstrup Of AT&T
(268-2213) 48 Hours Prior To
Excavation.

CAUTION! VERIFY
8" Water Line Crossing.
Depth Per Probe.

CAUTION! VERIFY
Proposed Cox Fiber Optic
Crossing. Depth Unknown.
Contact Bryan Ring Of
Cox Communications 48
Hours Prior To Excavation.
(260-7189)

CAUTION! VERIFY
Existing Domestic Water Line
Crossing. Depth Per Probe.
Contractor To Move As
Necessary.

CAUTION!
Proposed 8" Water
Line Crossing.



		Storm Water Sewer To Serve Bishop Carroll High School	
Baughman Company, P.A. 315 Elm St., Wichita, KS 67211 P:316.263.7711 F:316.262.0149 ENGINEERING SURVEYING PLANNING LANDSCAPE ARCHITECTURE			
PROJECT NUMBER 1765 PPS (607861)		DESIGN LU DATE 6/07	
REVISIONS		SCALE Note SHEET	
		4 OF 7	
Bishop Carroll Pkg & Bldg Exp/SWS-3R 0612E719			