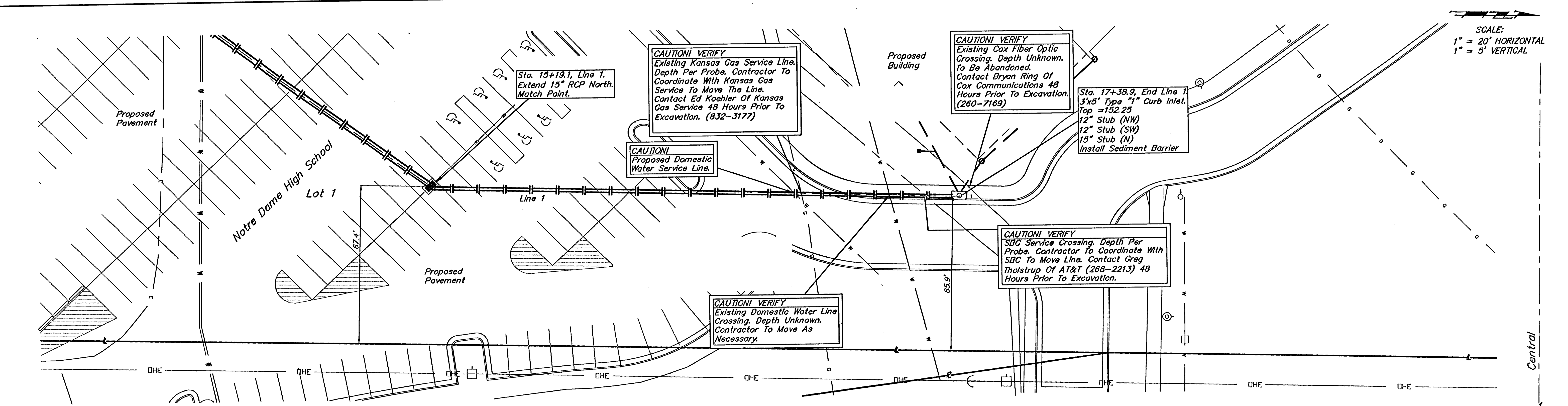


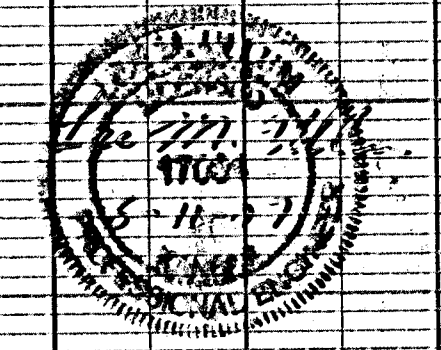
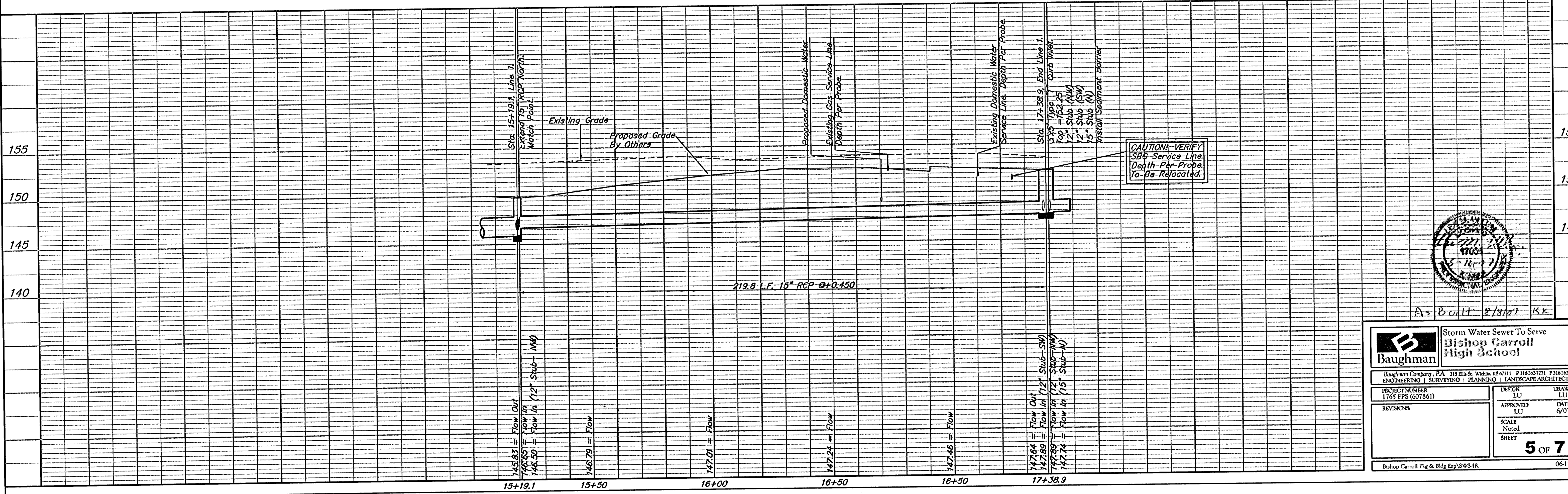
SCALE:  
1" = 20' HORIZONTAL  
1" = 5' VERTICAL



**Bench Marks**  
Woodchuck & Central  
City of Wichita Bench Mark.  
52.00 ft. North of center line.  
24.00 ft. West of center line.  
Elevation = 154.05 (City Datum)

Contractor Shall Follow All Applicable Best Management Practices (BMP) For Erosion Control.

Contractor To Use Extreme Caution When Excavating Near Utility Lines. Contractor To Hand Dig To Expose All Utility Lines Prior To Construction. Verify Depth To Determine Conflict If Any.



As Built 8/3/07 KK

<b>Baughman</b>		Storm Water Sewer To Serve <b>Bishop Carroll High School</b>	
Baughman Company, P.A. 315 Ella St. Wichita, KS 67211 P 316-262-7271 F 316-262-0149 ENGINEERING   SURVEYING   PLANNING   LANDSCAPE ARCHITECTURE			
PROJECT NUMBER 1765 PPS (607861)	DESIGN LU	APPROVED LU	DATE 6/07
REVISIONS	SCALE Noted	SHEET <b>5 OF 7</b>	
Bishop Carroll Pkg & Bldg Exp/SWS4R			06-12-B719