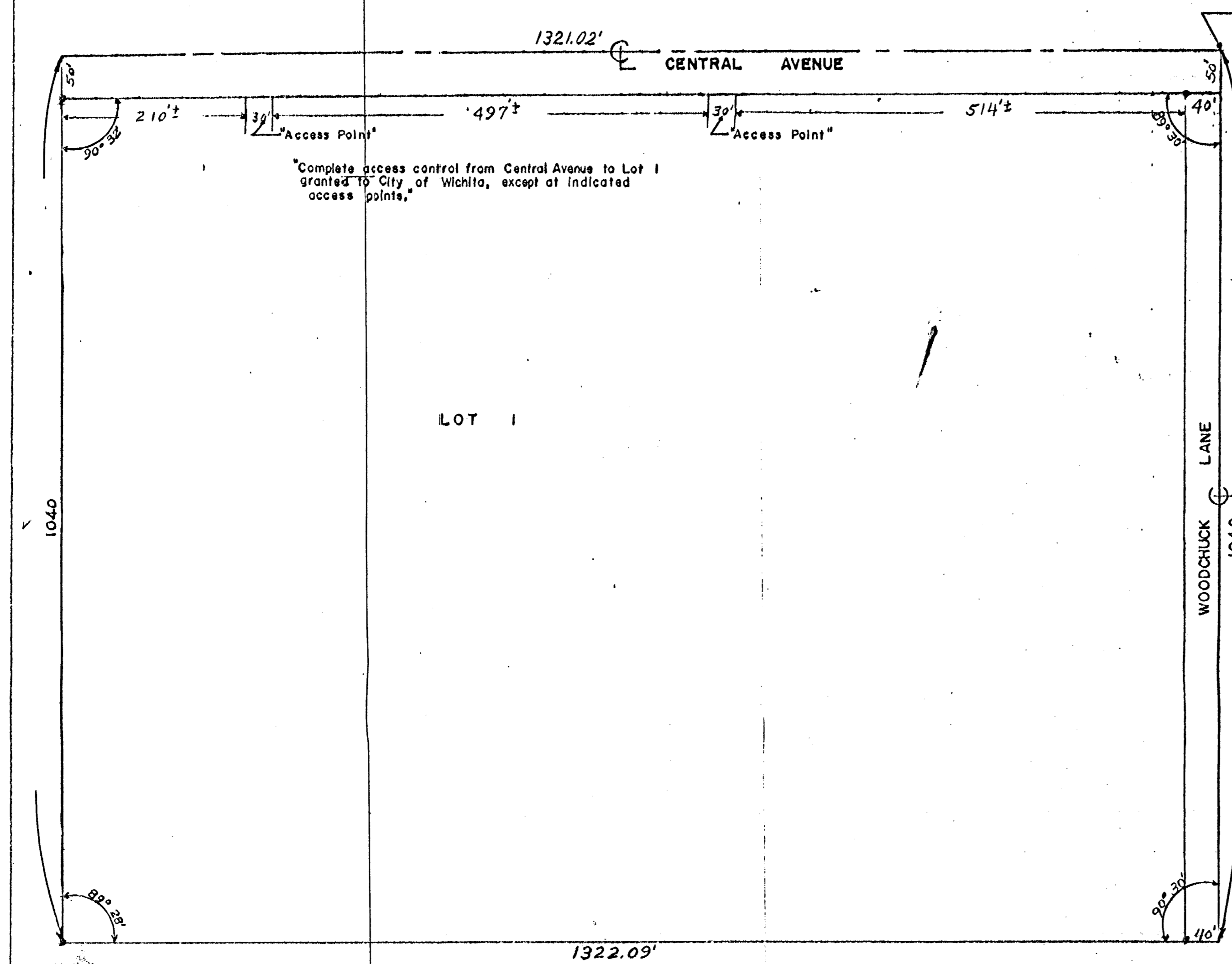


NOTRE DAME HIGH SCHOOL
AN ADDITION IN WICHITA, SEDGWICK COUNTY, KANSAS



NE Cor., NE 1/4, NW 1/4, Sec 21, Twp. 27, R-1-W

STATE OF KANSAS)
COUNTY OF SEDGWICK) ss

I, Floyd B. Devlin, a Licensed Engineer in and for said County and State, do hereby certify that I have surveyed NOTRE DAME HIGH SCHOOL, an addition in Wichita, Sedgwick County, Kansas, and that the accompanying plat is a true and correct exhibit of properly surveyed, described as follows: Beginning at a point on the east line of the NE 1/4, NW 1/4, Section 21, T-27-S, R-1-W of the 6th R.M., thence south along the east line of said NE 1/4, a distance of 1040 feet; thence right at an internal angle of 90° 30', for a distance of 1322.09 feet; thence right at an internal angle of 89° 28', for a distance of 1040 feet; thence right at an internal angle of 90° 32' for a distance of 1321.02 feet to the point of beginning.

Floyd B. Devlin
FLOYD B. DEVLIN - Consulting Engineer

Scale 1"=100'

Known unto these presents that CATHOLIC DIOCESE OF WICHITA, a non-profit corporation, has caused the land described in the surveyors certificate to be platted into one lot and one street and one avenue to be known as NOTRE DAME HIGH SCHOOL, an addition in Wichita, Sedgwick County, Kansas.

All streets shown on the plat and plat hereof dedicated are hereby dedicated to and for the use of the public. Complete access control from Central Ave. from that portion of Lot 1, NOTRE DAME HIGH SCHOOL ADDITION except those two 30 foot access areas shown on the face of the plat, is hereby granted to the City of Wichita.

CATHOLIC DIOCESE OF WICHITA
Leo C. Byrne
LEO C. BYRNE - President
Thomas C. Glynn
THOMAS C. GLYNN - Secretary

STATE OF KANSAS)
COUNTY OF SEDGWICK) ss

Be remembered, that on this 20th day of MARCH, 1963, before me a notary in and for said county and state, came LEO C. BYRNE, known to me to be the President of CATHOLIC DIOCESE OF WICHITA, who is personally known to me to be the same person who executed the foregoing instrument of writing, and such person duly acknowledged the execution of the same for and in behalf of and as the act and deed of said corporation. In testimony whereof I have hereunto set my hand and affixed my notarial seal the day and year above written.

J. Francis Hessel NOTARY PUBLIC

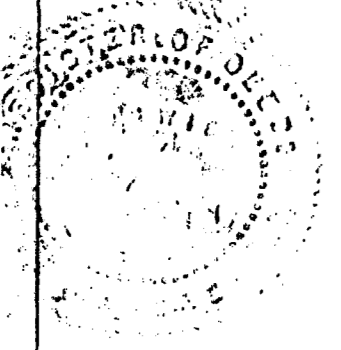
My commission expires July 21, 1966

This plat of NOTRE DAME HIGH SCHOOL has been submitted to and considered by the WICHITA-SEDGWICK COUNTY METROPOLITAN AREA PLANNING COMMISSION, Wichita, Kansas, and is hereby transmitted to the Board of Commissioners of the City of Wichita, Kansas, with the recommendation that such plat be approved as proposed.

Dated this 21st day of March, 1963.

Wichita-Sedgwick County Metropolitan Area Planning Commission
By *Charles D. Caudrey* Chairman
Deland R. Edwards Secretary

Approved by the Board of City Commissioners this 26th day of March, 1963.
Carla Beebe Mayor
W. H. Williams City Clerk



6256

STATE OF KANSAS)
COUNTY OF SEDGWICK) ss

This is to certify that this instrument was filed for record in the Register of Deeds office on the 10th day of April, 1963, at 11:22 o'clock, and is duly recorded.

Refus E. Steering Register of Deeds
Paul Wilbert Deputy

Approved by the Board of County Commissioners this 30th day of March, 1963.

W. H. Williams County Clerk
Entered on transfer record this 1st day of April, 1963.
W. H. Williams County Clerk

320