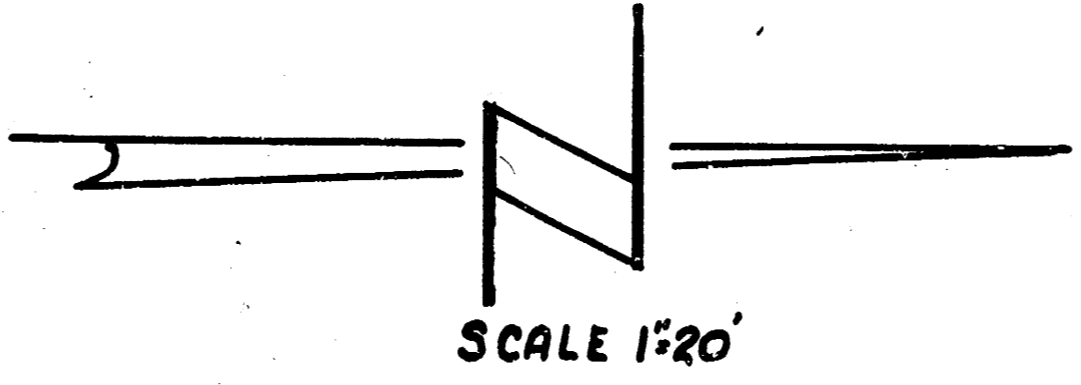


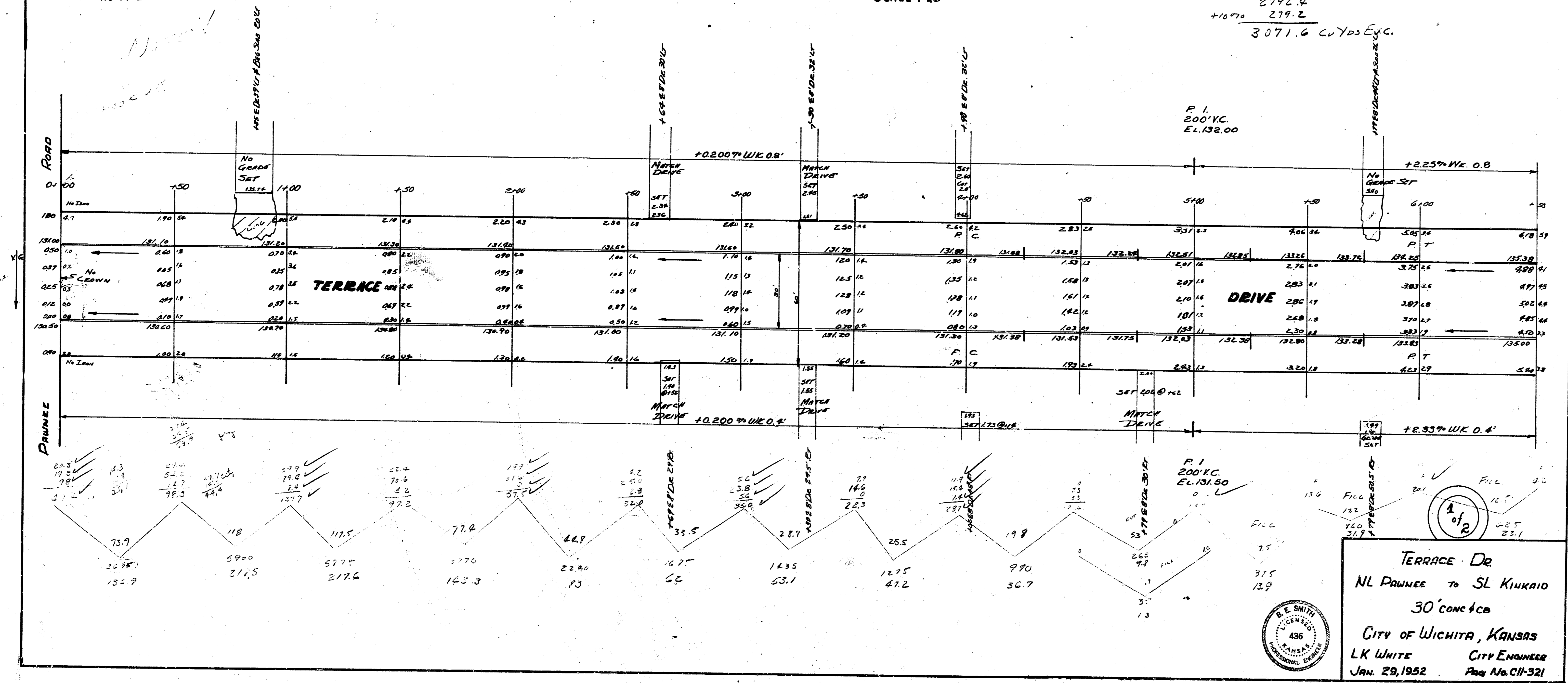
B.M. 1835 NW Cor. City Block No. 2200 Terrace Drive
B.M. 1835 Sta. Pawnee & Outer NW Cor.



PROPERTY
741
+10.70
8 1/2 Cu Yds Fill

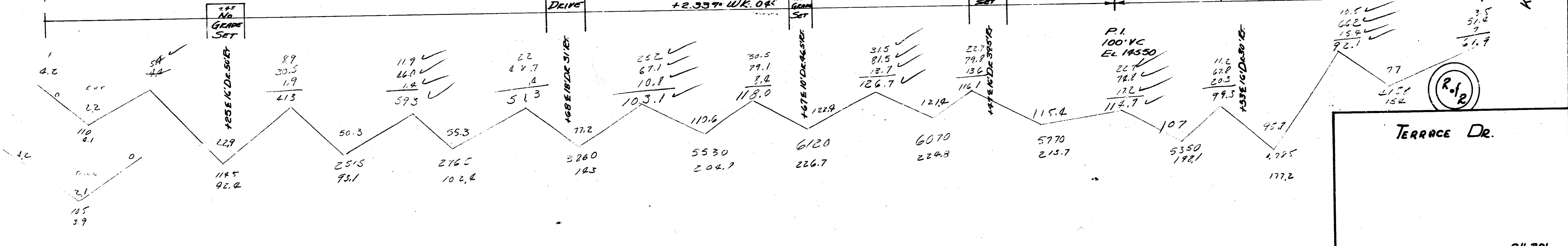
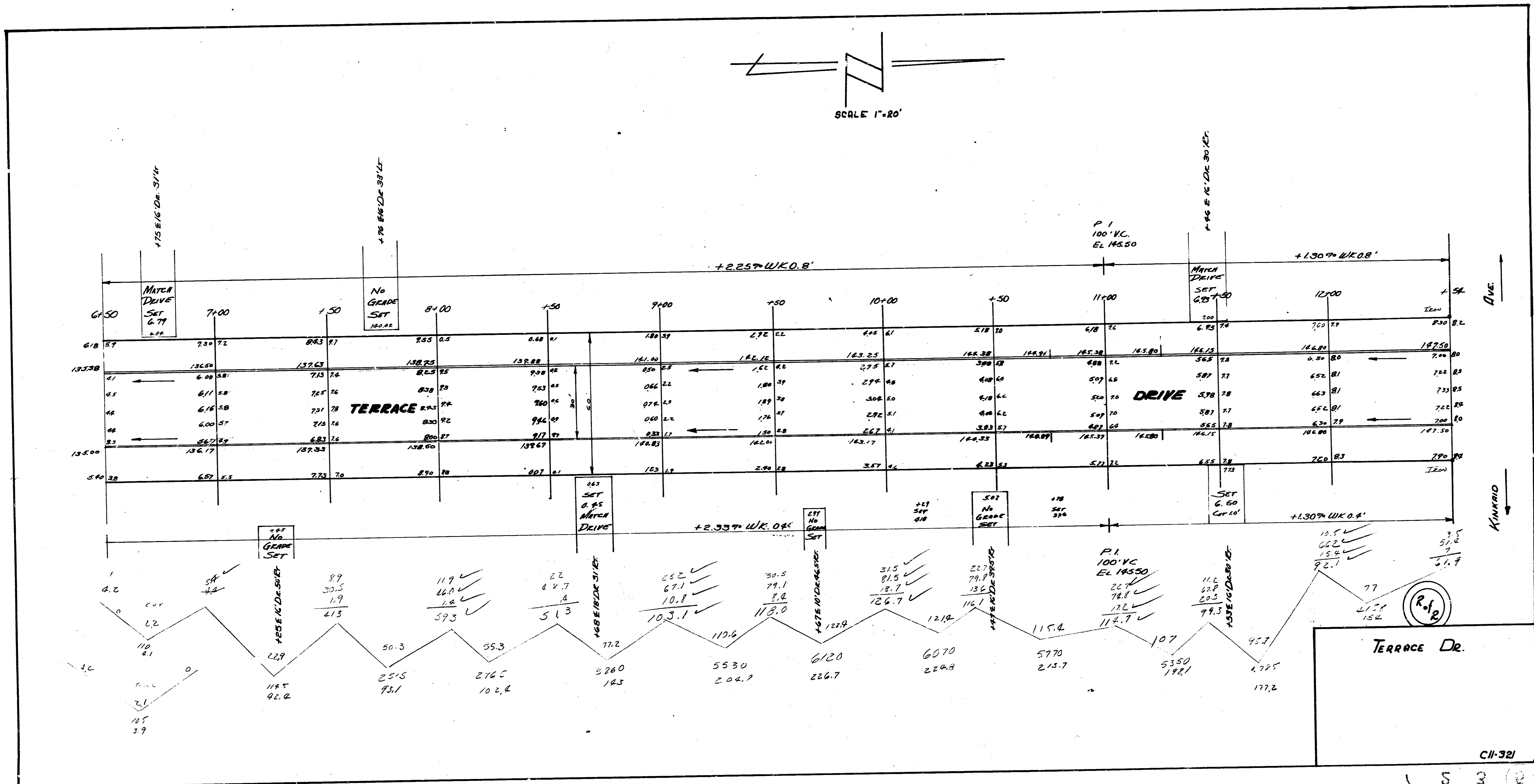
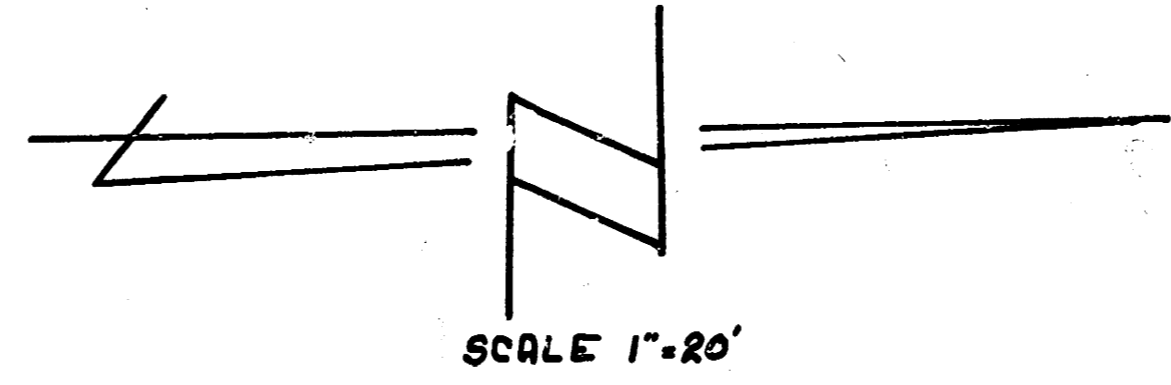
2792.4
279.2
3071.6 Cu Yds Exc.

STATIONING ON E



TERRACE DR
NW PAWNEE TO SE KINKAID
30' CONC + CB
CITY OF WICHITA, KANSAS
L.K. WHITE CITY ENGINEER
JAN. 29, 1952 Page No. C11-321





1 5 3 2

CH-321