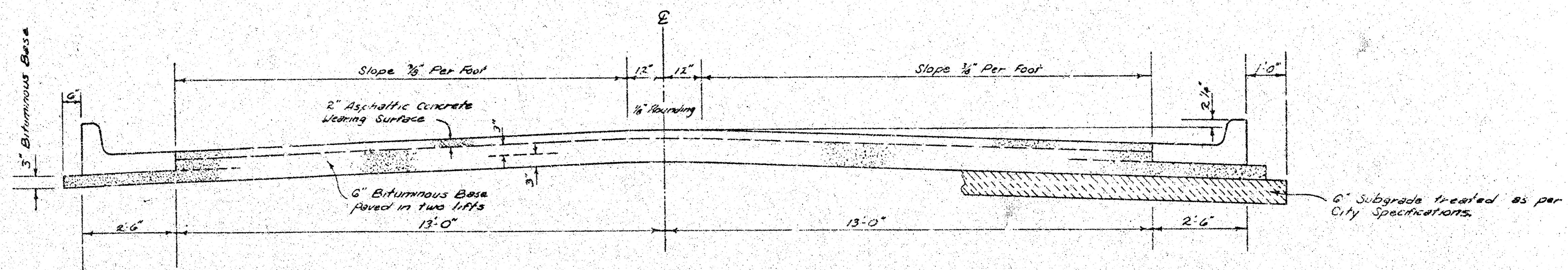


TERRACE DRIVE

E.L. FOUNTAIN Ave. to S.L. BROOKS Ave.

PROJ. NO. DAKS 576009



TYPICAL SECTION

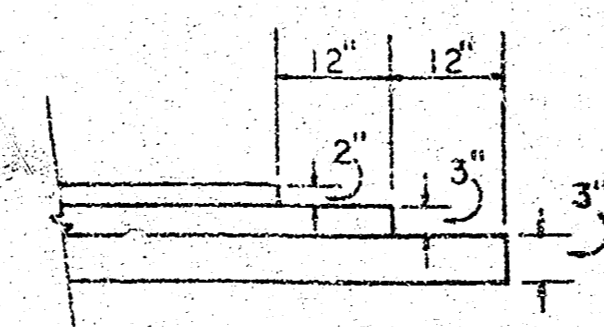
31' ASPHALTIC CONCRETE PAVEMENT WITH BITUMINOUS BASE

The A.C. pavement between the Comb. Curb & Gutter shall be paid as Sq. Yds. 3" A.C. Pavement (6 Bituminous Base). The Bituminous Base under the Comb. Curb & Gutter shall be paid as Sq. Yds. 3" Bituminous Base.

A TACK COAT OF EMULSIFIED ASPHALT (SS-1H) SHALL BE APPLIED AT AN APPROXIMATE RATE OF 0.05 GALLONS PER SQ. YD. BETWEEN LIFTS OF ASPHALTIC MATERIALS WHEN ORDERED BY THE ENGINEER. TACK COAT WILL NOT BE PAID FOR DIRECTLY AND SHALL BE CONSIDERED AS SUBSIDIARY TO PRICE BID FOR ASPHALTIC PAVEMENT.

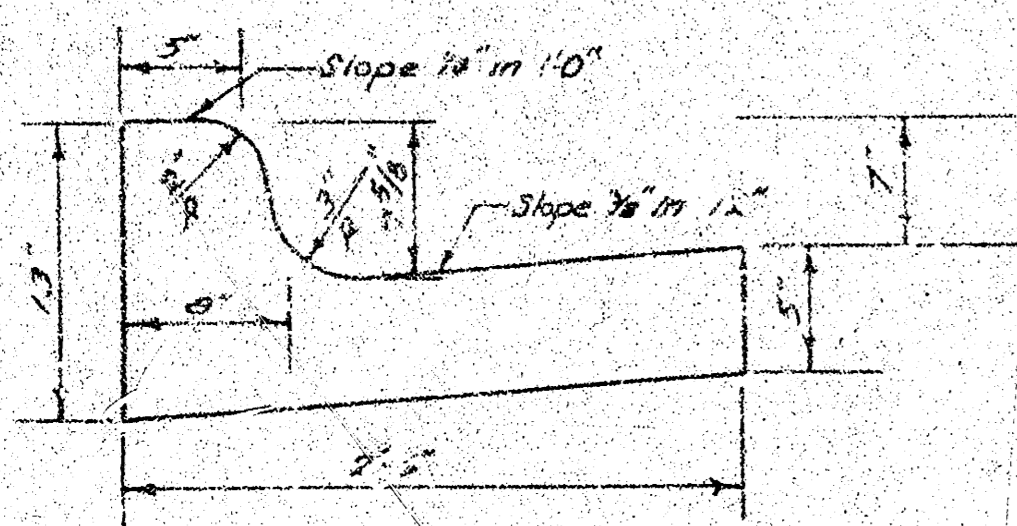
BITUMINOUS BASE AND ASPHALTIC CONCRETE WEARING SURFACE SHALL BE PLACED WITH A LAYDOWN MACHINE HAVING AUTOMATIC ELECTRONIC CONTROLS FOR CROWN AND GRADE. CONSTRUCTION JOINTS IN EACH LIFT SHALL BE STAGGERED A MINIMUM DISTANCE OF 1' WITH JOINTS IN PRECEDING LIFTS AND SUCH THAT A JOINT WILL BE CONSTRUCTED ON THE PAVEMENT CENTERLINE IN THE TOP LIFT.

DETAIL OF TRANSVERSE CONSTRUCTION JOINTS

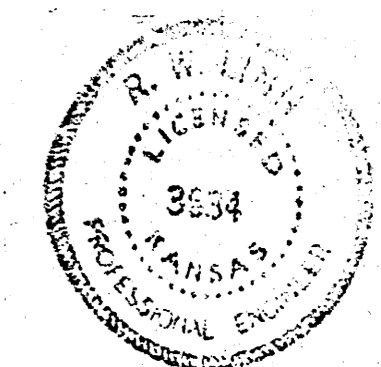
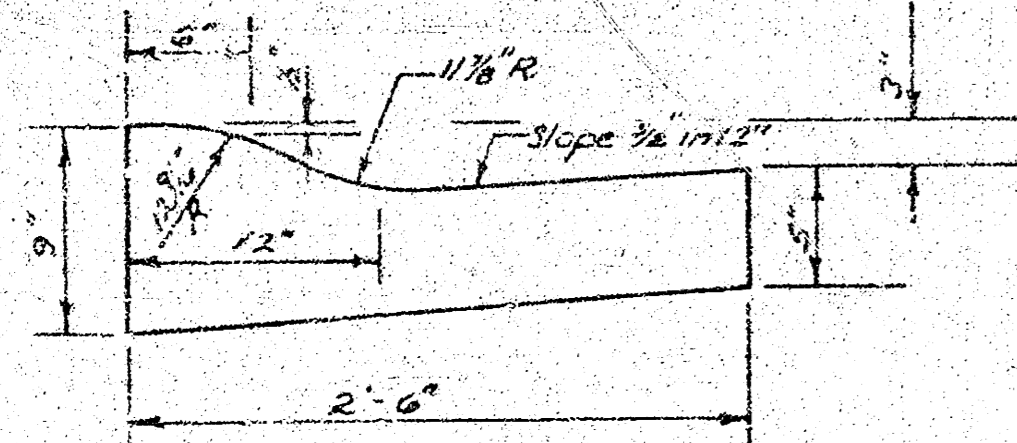


TRANSVERSE CONSTRUCTION JOINTS SHALL BE CONSTRUCTED IN FLEXIBLE BASE PAVEMENTS AT LOCATIONS WHERE PAVEMENT TEMPORARILY ENDS TO FACILITATE FUTURE PAVEMENT CONSTRUCTION AS SHOWN BY DETAIL. THE COST OF CONSTRUCTING THE TRANSVERSE CONSTRUCTION JOINTS SHALL NOT BE MEASURED OR PAID FOR DIRECTLY BUT SHALL BE INCLUDED IN THE BID PRICE FOR SQUARE YARDS OF ASPHALTIC CONCRETE PAVEMENT.

COMBINED CURB & GUTTER



ROLL TYPE CURB & GUTTER



CITY OF WICHITA, KANSAS

DEPARTMENT OF PUBLIC WORKS — ENGINEERING

R. W. LINN

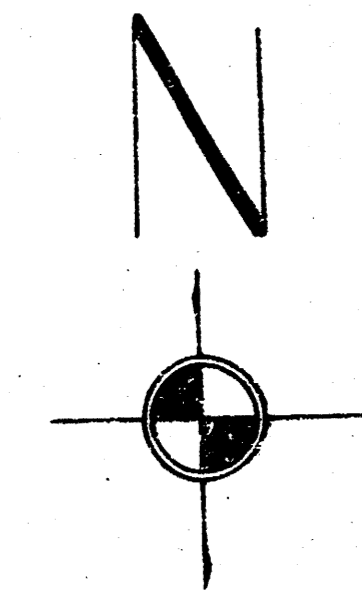
CITY ENGINEER

DATE: _____ PROJ. NO. DAKS 576009

1/7

FILMED FROM THE BEST AVAILABLE COPY.....

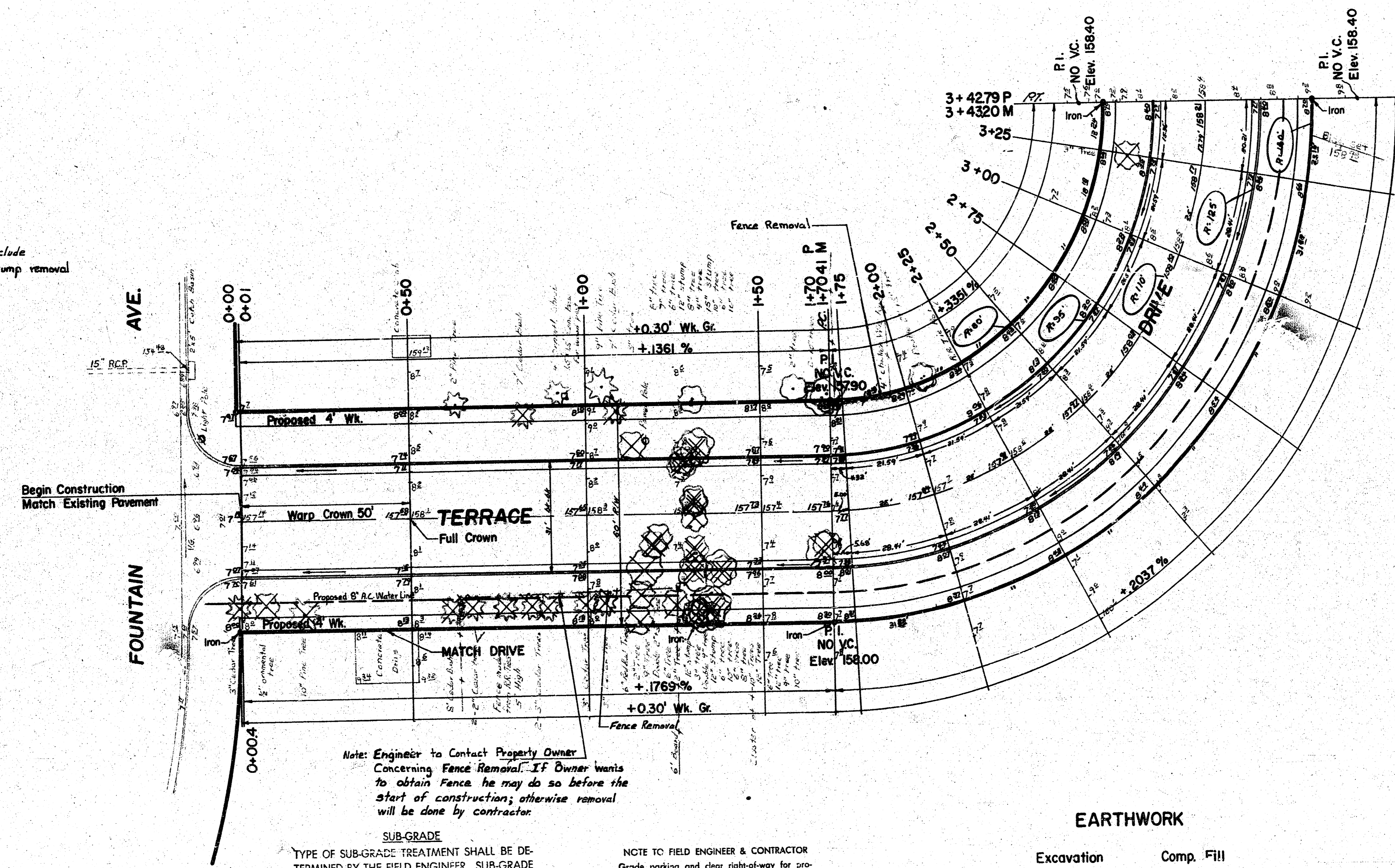
BM 161.56 NE Corner Concrete Porch House No. 4305 East 27th St. North
 BM 157.88 R.R. Spike E. side Wood St. Light Pole on N.E. Corner Terrace Dr. & Fountain.
 BM 156.91 W. Rim M.H. 28' NW of Iron S.L. Brooks at EL. Chisholm Park Estates
 Baseline— Centerline of Terrace Drive



SCALE 1" = 20'

Note: Bid item "clearing right-of-way" to include tree removal, fence removal, and stump removal

Survey, Scale, Quantity, BM, 1/10/2003
 Plan, P. 10/2003
 E.L., M.S., F. 10/2003
 Checked, C. 10/2003



= Fence Removal

Note: Trees to be removed are marked thus - Except that any tree marked for removal, which in the opinion of the engineer can be saved, shall be spared.

Note: Engineer to Contact Property Owner Concerning Fence Removal. If Owner wants to obtain Fence he may do so before the start of construction; otherwise removal will be done by contractor.

SUB-GRADE
 TYPE OF SUB-GRADE TREATMENT SHALL BE DETERMINED BY THE FIELD ENGINEER. SUB-GRADE TREATMENT MAY CONSIST OF LIME TREATMENT, CEMENT TREATMENT, SUB-GRADE MODIFICATION, OR ANY COMBINATION OF THESE.

NOTE TO FIELD ENGINEER & CONTRACTOR
 Grade parking and clear right-of-way for proposed sidewalk. Compact fill in sidewalk area. TO BE CONSTRUCTED BY "OTHERS".

Note: Only 15 Driveways to be Included on this Project.

$\Delta = 90^{\circ}00'$ R. = 110' T. = 110' L. = 172.74' L.C. = 155.54'

CURVE DATA BASED ON $\Delta = 90^{\circ}$ RAD. $\Delta = 1.57$

STA.	ARC.	CHORD LENGTH	DEFLECTION	TOTAL DEFLECTION
		8' OFF CB	8' OFF CB	
PC 1+70				0° 00' 00"
1+75	5.00	6.02	3.95	1° 18' 08"
2+00	25.00	30.16	19.73	6° 30' 39"
2+25	25.00	30.16	19.73	12° 30' 39"
2+50	25.00	30.16	19.73	18° 30' 39"
2+75	25.00	30.16	19.73	24° 30' 39"
3+00	25.00	30.16	19.73	30° 30' 39"
3+25	25.00	30.16	19.73	36° 30' 39"
PT 3+42.74	12.74	21.89	14.05	45° 00' 00"

Defl. / Ft. = 15.62612182 Min.

EARTHWORK

Excavation	Comp. Fill
780 cu. yd.	205.3 cu. yd.
plus 10% 78 cu. yd.	205 cu. yd.
TOTAL 858 cu. yd.	225.8 cu. yd.
Manipulation	3491.9 sq. yd.

TERRACE DRIVE
 E.L. FOUNTAIN AVE. to S.L. BROOKS AVE.
 31' B B AC Pavement With Comb. Cb. & Grt.
 CITY OF WICHITA, KANSAS
 R. W. LINN CITY ENGINEER
 Proj. No. DAKS 576009 Date 2/3

