

PAVING PLANS FOR
37TH. ROCK ADDITION
 36TH. ST. NO. : FROM THE W.L. OF 37TH. ROCK ADD. TO THE WEST
 LINE OF COMOTARA OFFICE CENTER
 INWOOD: FROM THE N.L. OF 36TH. ST. NO. TO THE
 SOUTH LINE OF 37TH. STREET NORTH
PROJECT NO.
472-76-245-81407-000-000-001
 CITY OF WICHITA, KANSAS
 MICHAEL E. LINDEBAK, CITY ENGINEER
 JANUARY, 1985

GENERAL NOTES

1. CURB AND GUTTER WITH WIDENED GUTTER TO BE PAID AS COMBINED CURB AND GUTTER.
2. ALL DRAINAGE STRUCTURES "BY OTHERS".
3. CONTRACTOR SHALL BE RESPONSIBLE FOR PRESERVING PROPERTY IRONS. THE CONTRACTOR SHALL BE REQUIRED TO RE-ESTABLISH ANY PROPERTY IRONS WHICH ARE DAMAGED OR DESTROYED BY THIS CONSTRUCTION OPERATION. SUCH IRONS SHALL BE RE-ESTABLISHED BY A LICENSED LAND SURVEYOR OR A LICENSED PROFESSIONAL ENGINEER IN ACCORDANCE WITH STATE LAWS.
4. PAVING CONTRACTOR TO COORDINATE WORK WITH STORM SEWER AND SANITARY SEWER CONTRACTORS AND TO CONTACT UTILITY COMPANIES FOR LOCATION OF ANY UNDERGROUND LINES.
5. CONTRACTOR SHALL COORDINATE WITH THE CONTRACTOR OF 36TH STREET NORTH (E.L. 37TH ROCK ADDITION TO E.L. COMOTARA OFFICE CENTER ADDITION) PROJECT.
6. TREES TO BE REMOVED ARE MARKED ALL TREES WHICH IN THE OPINION OF THE FIELD ENGINEER CAN BE SAVED SHALL BE SAVED.
7. NO MORE THAN 2-25' DRIVEWAY APPROACHES OR THE EQUIVALENT TO BE CONSTRUCTED.

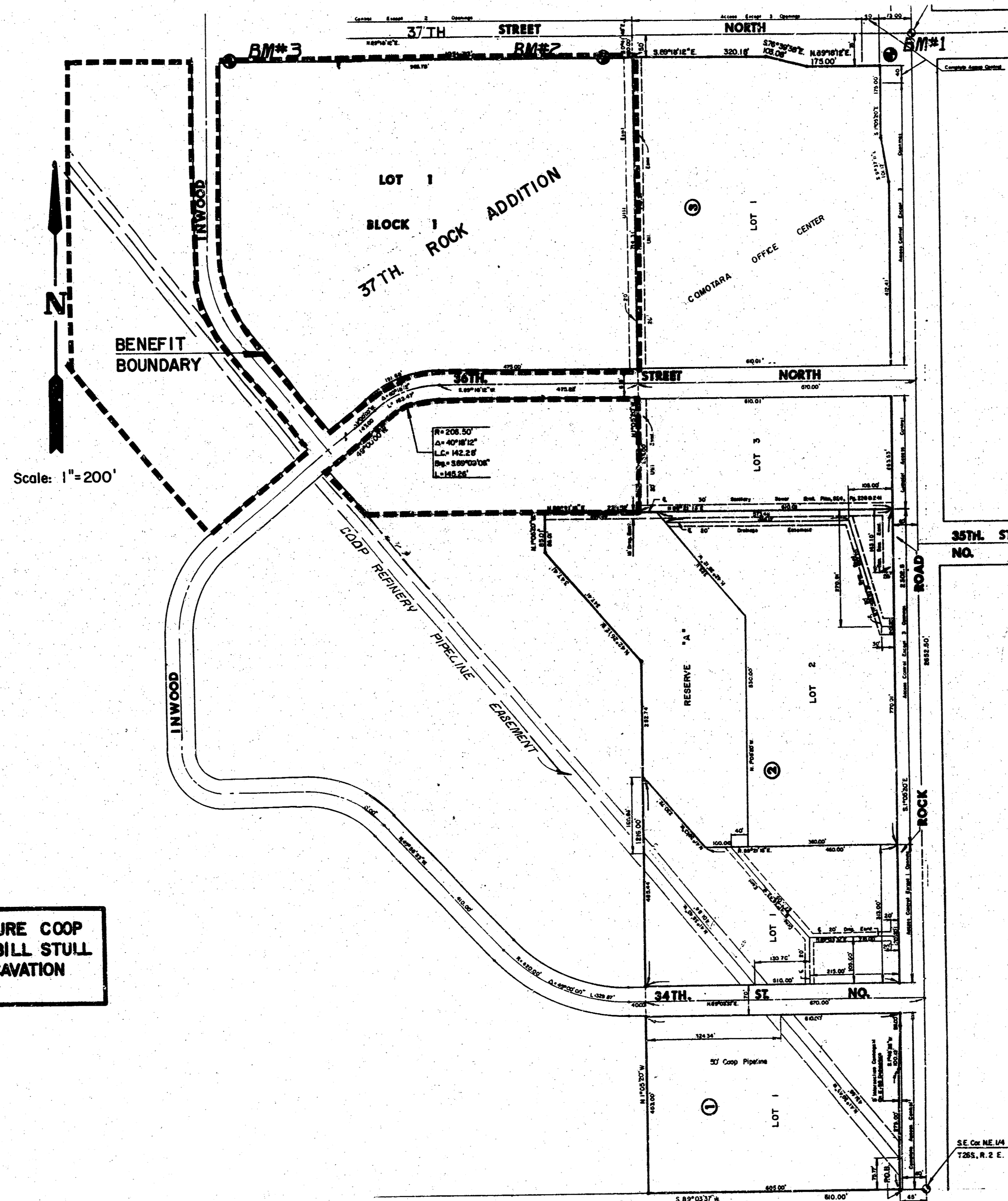
NOTE: NOTIFY THE FOLLOWING COMPANIES PRIOR TO ANY EXCAVATION:

ARKLA GAS COMPANY	942-8350
BELL TELEPHONE COMPANY	268-2256
CABLEVISION	269-3340
GAS SERVICE COMPANY	263-7511
KANSAS GAS & ELECTRIC	261-6375
KANSAS ONE-CALL	1-800-DIG-SAFE

BENCHMARKS

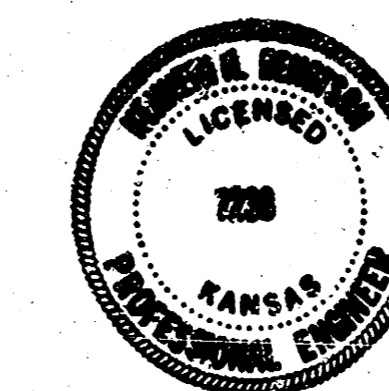
- BM # 1: ELEV. 204.11
 City of Wichita BM Disc. 44' S. and 48' W. of
 Intersection Rock Road at 37th Street North.
- BM # 2: ELEV. 199.26
 R.R. Spike in S.S./Pole 730.67' W. and 50' S. of
 Intersection Rock Road at 37th Street North.
- BM # 3: ELEV. 187.17
 R.R. Spike in S.S./Pole 1662.75' W. and 50' S. of
 Intersection Rock Road at 37th Street North.

CAUTION: HIGH PRESSURE COOP
 PIPELINE. CONTACT BILL STULL
 24 HRS. PRIOR TO EXCAVATION
 AT: 1-316-221-2107



INDEX TO DRAWINGS

SHEET NO.	DESCRIPTION
1	TITLE SHEET
2A-2C	PAVING & MANHOLE DETAILS
3-4	36TH. ST. NO. PLAN
5-6	INWOOD PLAN
7-11	CROSS SECTIONS
12	FINAL PLAT

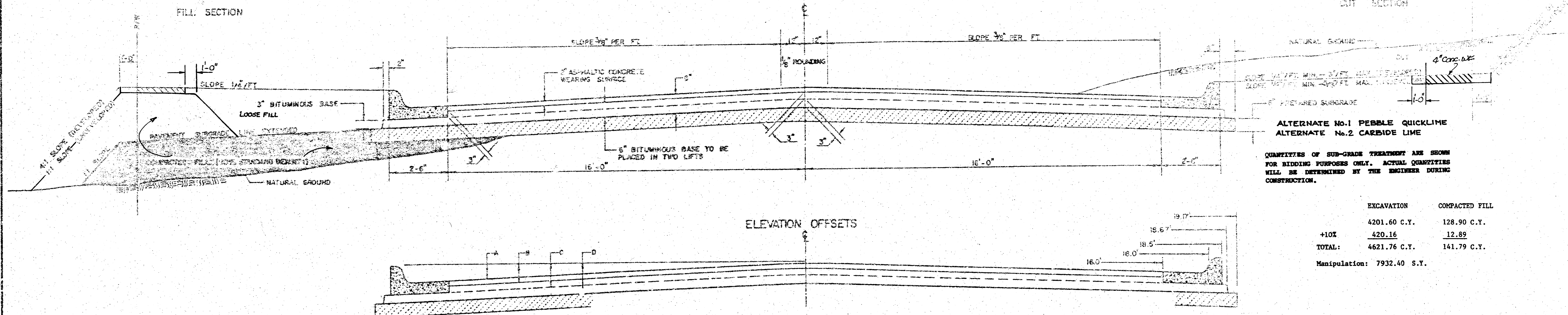


	PAVING PLANS FOR 37TH. ROCK ADDITION	Design AMS Drawn by DLM Checked by KHB Date JANUARY, 1984 Job no.
	MID-KANSAS ENGINEERING CONSULTANTS PA 240 NORTH ROCK ROAD SUITE 130 WICHITA, KANSAS 67206	Sheet 1 of 12

FILMED FROM THE BEST
 AVAILABLE COPY

TYPICAL 37' PAVEMENT DETAILS

TRANSVERSE SECTION

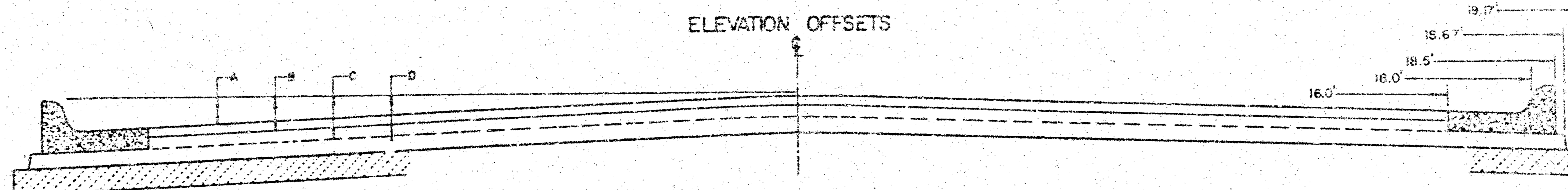


ALTERNATE No.1 PEBBLE QUICKLIME
ALTERNATE No.2 CARBIDE LIME

QUANTITIES OF SUB-GRADE TREATMENT ARE SHOWN FOR BIDDING PURPOSES ONLY. ACTUAL QUANTITIES WILL BE DETERMINED BY THE ENGINEER DURING CONSTRUCTION.

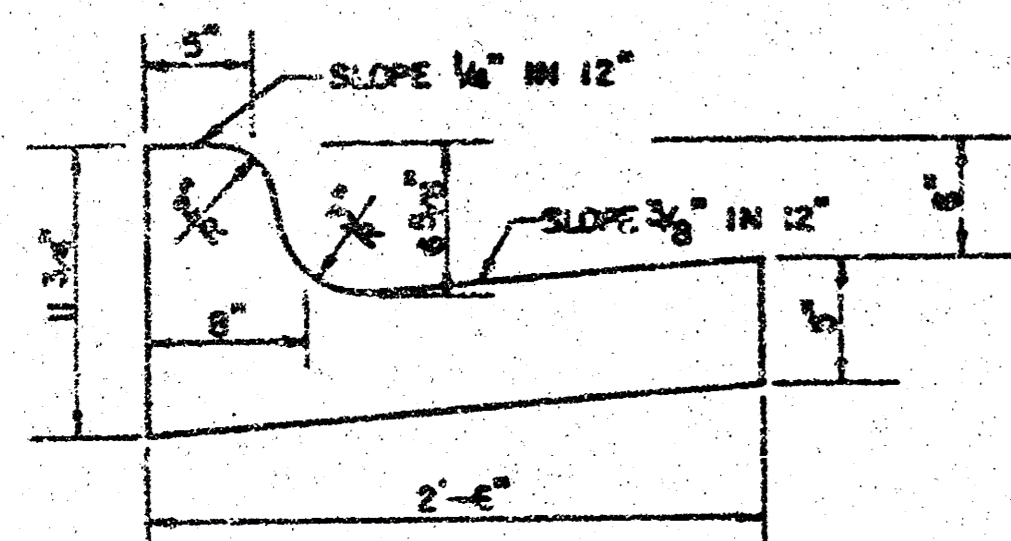
	EXCAVATION	COMPACTED FILL
+10%	4201.60 C.Y.	128.90 C.Y.
TOTAL:	4621.76 C.Y.	141.79 C.Y.
Manipulation:	7932.40 S.Y.	

ELEVATION OFFSETS

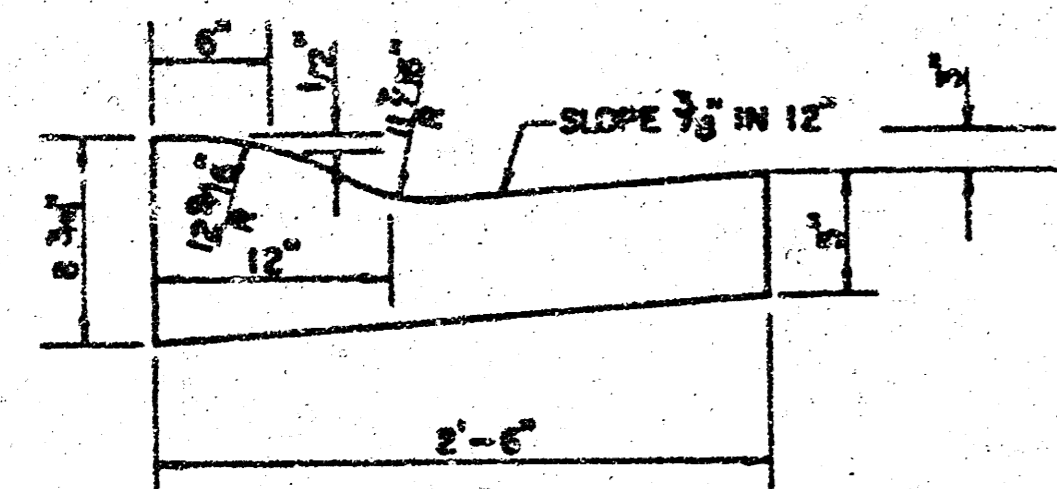


	DISTANCE FROM CENTERLINE (LT. & RT.)													
	0	2	4	6	8	10	12	14	16	18	18.5	18.67	19.17	
A: TOP OF CURBS TO TOP OF SURFACE LIFT	.01	.05	.11	.18	.24	.30	.36	.43	.49	—	—	—	—	
B: TOP OF CURBS TO TOP OF UPPER BASE LIFT	.17	.22	.28	.34	.40	.47	.53	.59	.65	—	—	—	—	
C: TOP OF CURBS TO TOP OF LOWER BASE LIFT	.42	.47	.53	.59	.65	.72	.78	.84	.90	.97	.98	.99	—	
D: TOP OF CURBS TO TOP OF SUBGRADE	.67	.72	.78	.84	.90	.97	1.03	1.09	1.15	1.22	1.23	1.24	1.25	

COMBINED CURB & GUTTER



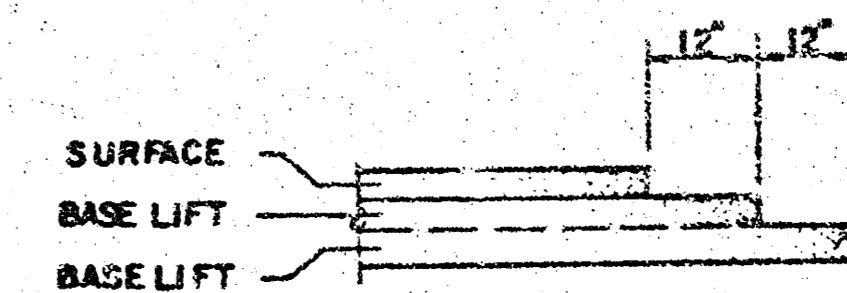
ROLL TYPE COMBINED CURB & GUTTER



GENERAL NOTES

- 1) THE ASPHALTIC CONCRETE PAVEMENT BETWEEN THE COMBINED CURB AND GUTTER SHALL BE PAID AS SQUARE YARDS OF 8\"/>
- 2) THE BITUMINOUS BASE UNDER AND BEHIND THE COMBINED CURB AND GUTTER SHALL BE PAID AS SQUARE YARDS OF 3\"/>
- 3) A TACK COAT OF EMULSIFIED ASPHALT (SC-1H OR CS-1H) SHALL BE APPLIED AT AN APPROXIMATE RATE OF 0.05 GALLONS PER SQUARE YARD BETWEEN EACH LIFT OF ASPHALTIC MATERIAL.
- 4) BITUMINOUS BASE AND ASPHALTIC CONCRETE WEARING SURFACE SHALL BE PLACED WITH A LAYDOWN MACHINE HAVING AUTOMATIC CONTROLS FOR LINE AND GRADE.
- 5) CONSTRUCTION JOINTS IN EACH LIFT SHALL BE STAGGERED A MINIMUM DISTANCE OF ONE (1) FOOT FROM JOINTS IN PRECEDING LIFTS AND PLACED SO THAT A JOINT WILL BE CONSTRUCTED ON THE CENTERLINE OF THE TOP LIFT.
- 6) CONTRACTOR TO BID ONLY ONE SUBGRADE TREATMENT ALTERNATE WHEN ALTERNATES ARE PROVIDED IN THE PROPOSAL AND CONTRACT. THE ALTERNATE CHOSEN BY THE SUCCESSFUL BIDDER SHALL BE USED IN CONSTRUCTING THIS PROJECT.

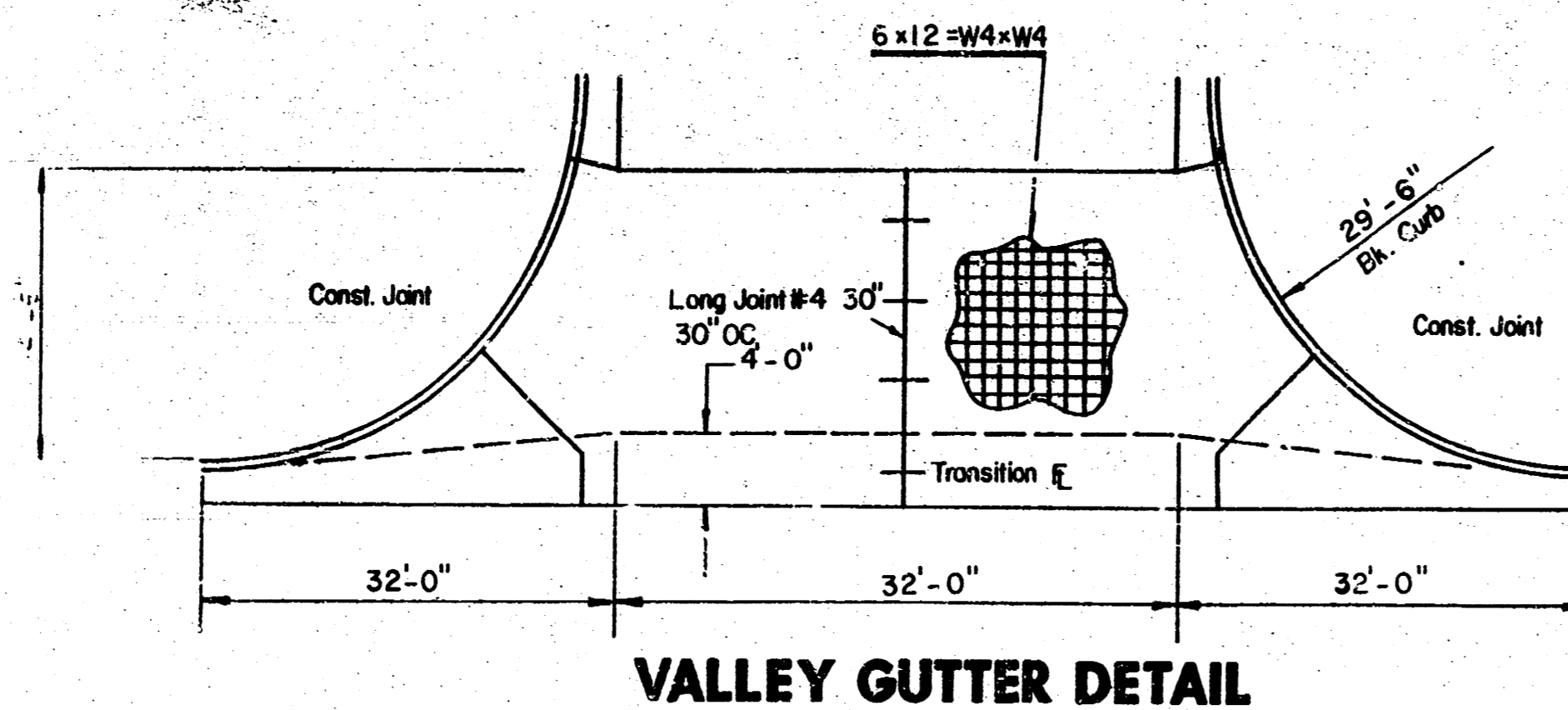
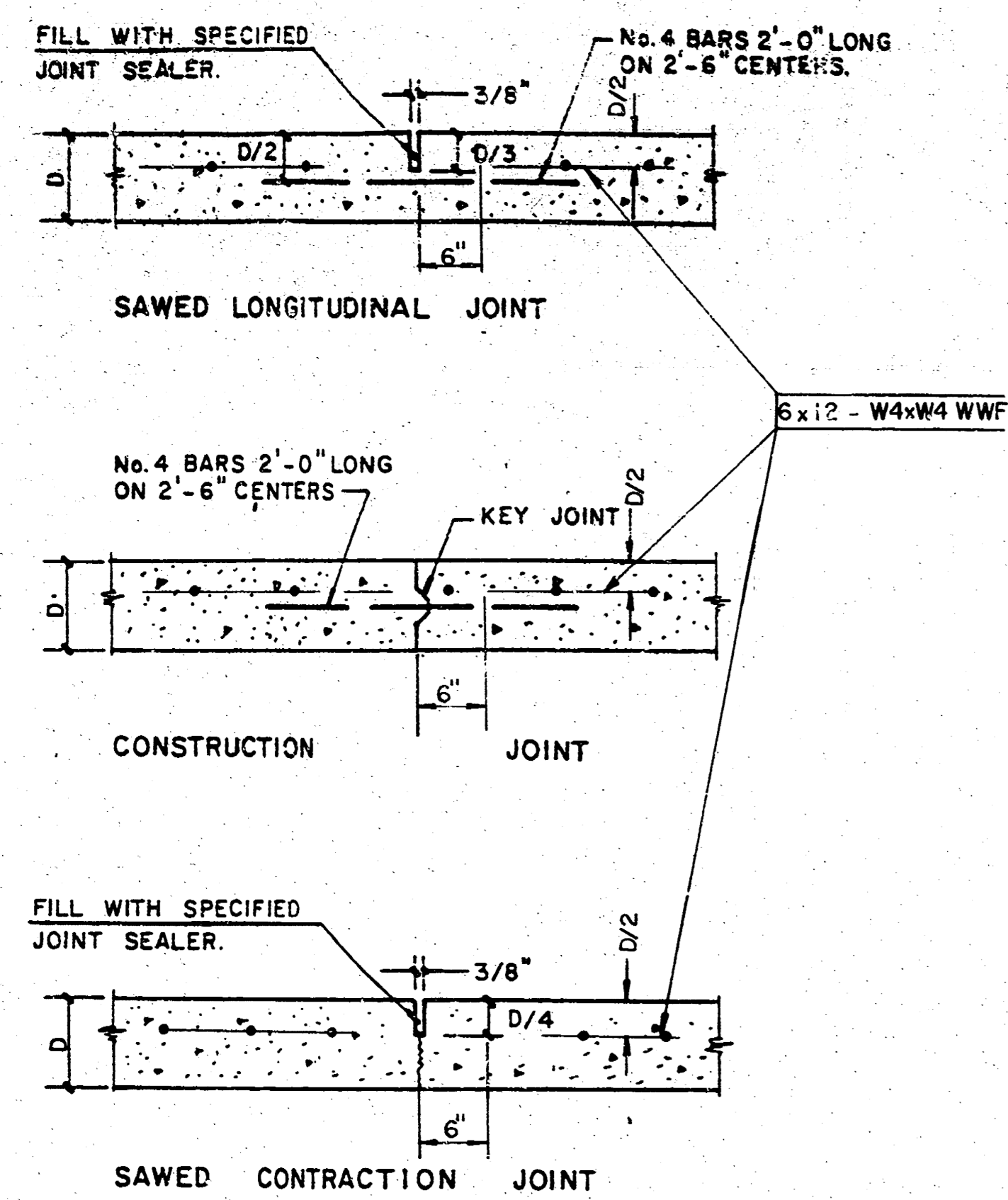
TRANSVERSE CONSTRUCTION JOINTS



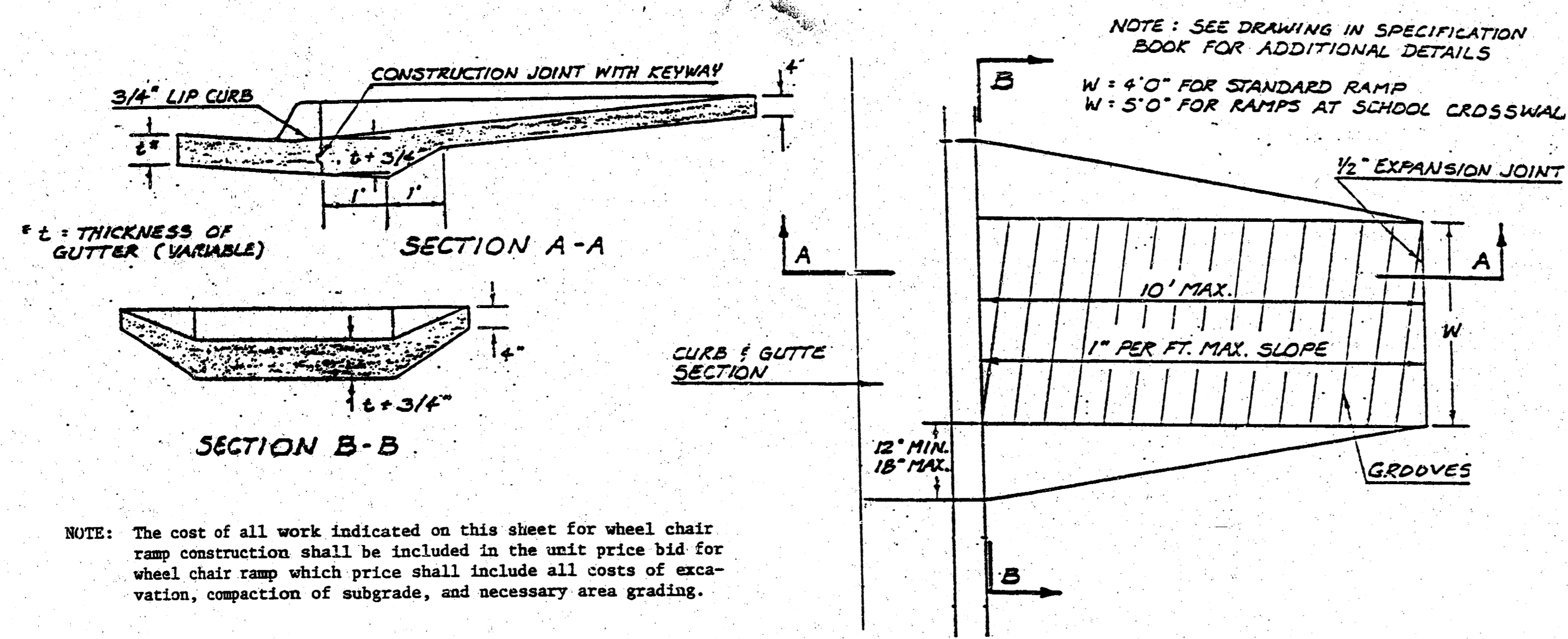
TRANSVERSE CONSTRUCTION JOINTS SHALL BE CONSTRUCTED IN FLEXIBLE BASE PAVEMENTS AT LOCATIONS WHERE PAVEMENT JOINTS EXISTING FLEXIBLE BASE PAVEMENT AS SHOWN BY THE DETAIL. ALL COSTS ASSOCIATED WITH THE CONSTRUCTION OF THE TRANSVERSE JOINT SHALL BE INCLUDED IN THE BID PRICE FOR SQUARE YARDS 8\"/>

8 INCH RESIDENTIAL ASPHALTIC CONCRETE
PAVEMENT WITH 6 INCH BITUMINOUS BASE
CITY OF WICHITA, KANSAS
PROJECT NUMBER 2/11
472-76-245-81407-000-000-001

ORIGINAL



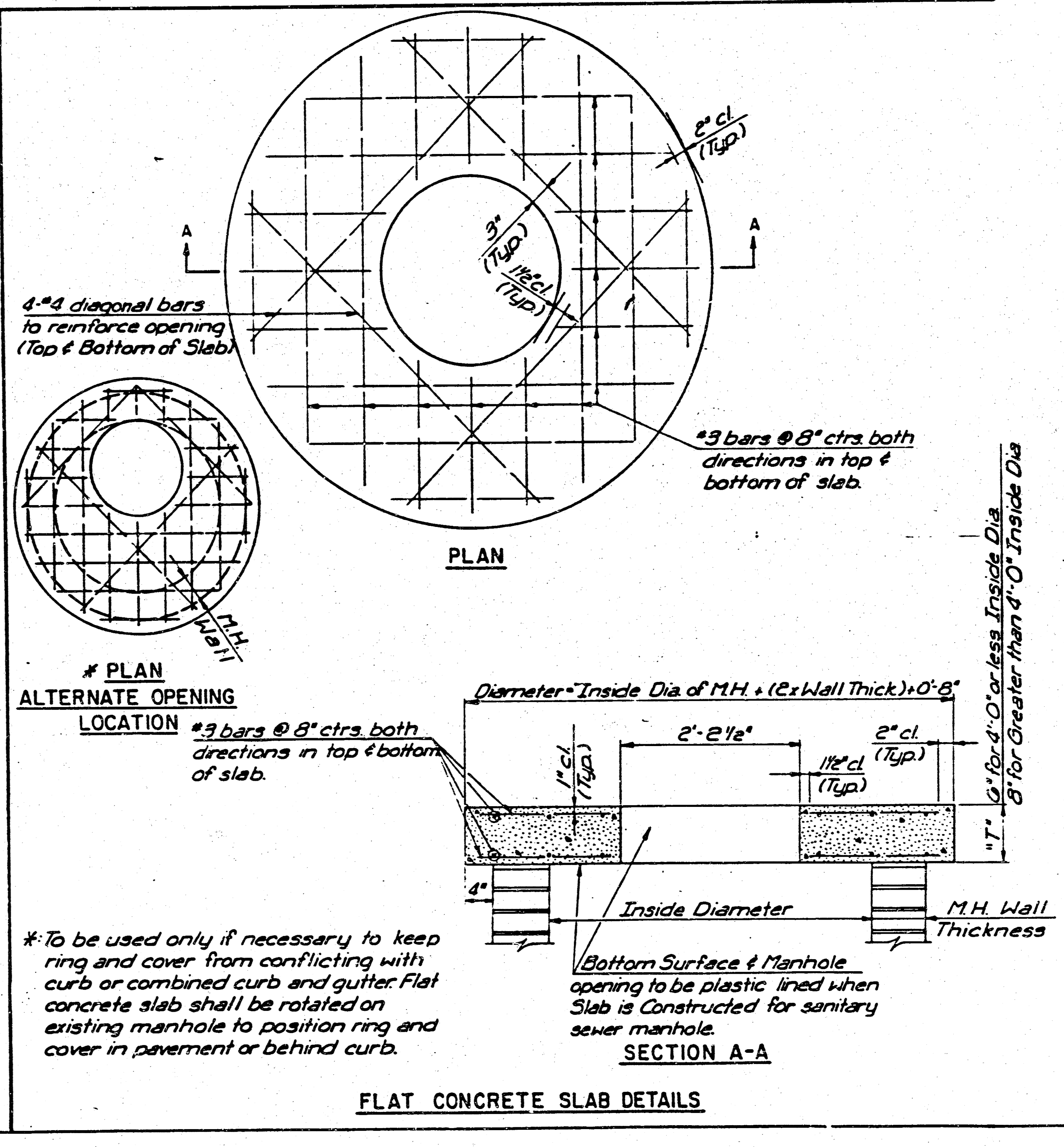
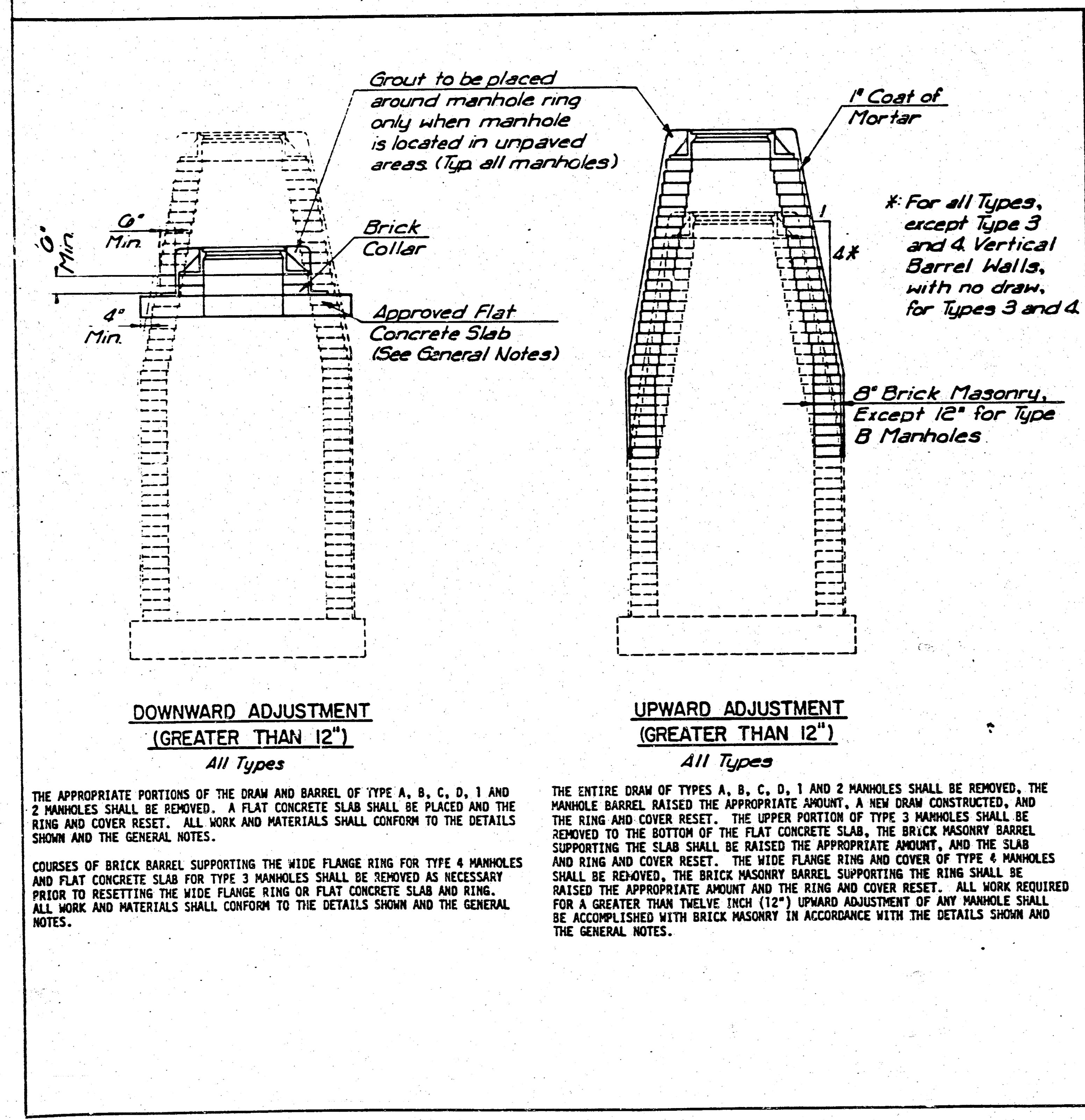
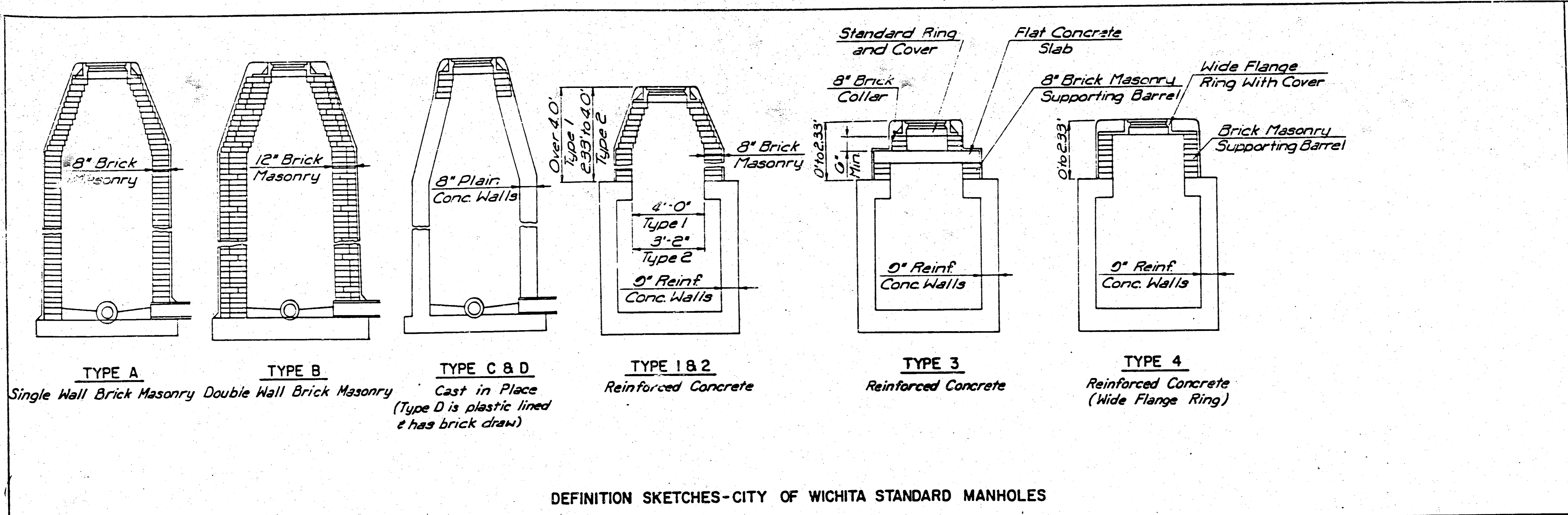
STANDARD WHEELCHAIR RAMP CONSTRUCTION DETAIL FOR STREETS WITH COMBINED CURB & GUTTER



NOTE: The cost of all work indicated on this sheet for wheel chair ramp construction shall be included in the unit price bid for wheel chair ramp which price shall include all costs of excavation, compaction of subgrade, and necessary area grading.

	<p>DETAILS</p>	Design
		Drawn by
		Checked by
		Date
<p>MID-KANSAS ENGINEERING CONSULTANTS PA 246 NORTH ROCK ROAD SUITE 130 WICHITA, KANSAS 67206</p>		<p>Sheet 2B 3 / 12</p>

FILMED FROM THE BEST AVAILABLE COPY.....



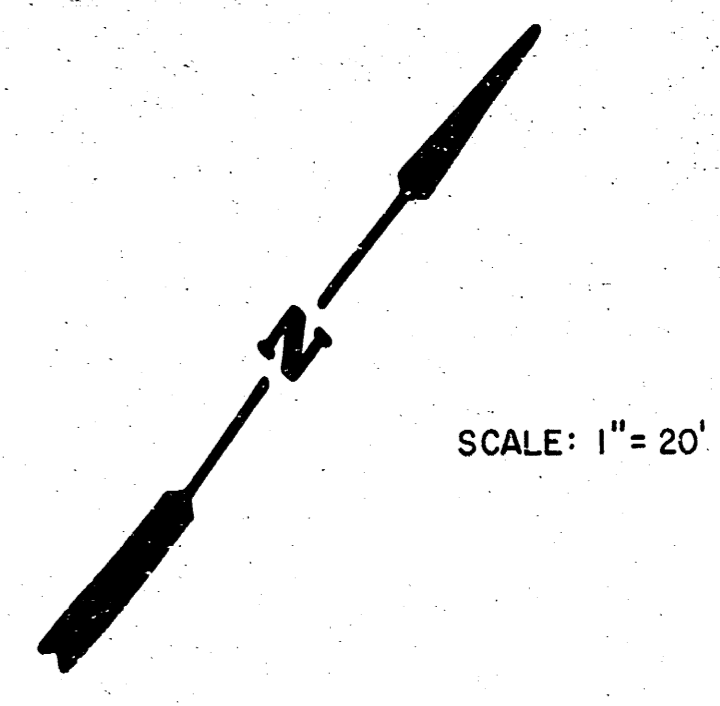
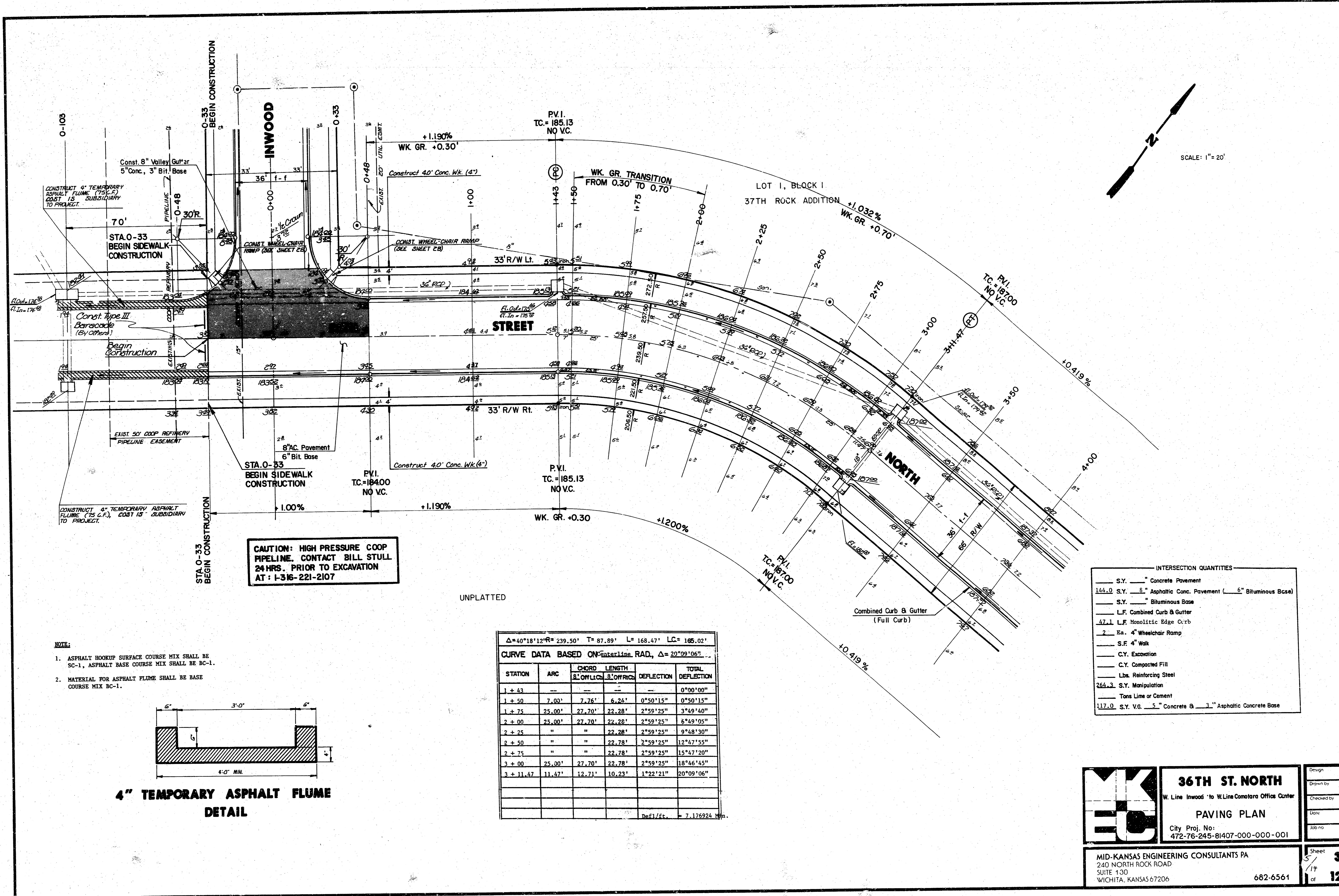
MANHOLE ADJUSTMENT DETAILS

CITY OF WICHITA, KANSAS
M. E. LINDEBAK - CITY ENGINEER

Designed by _____ Checked by _____
Drawn by _____ Date _____

2C
12

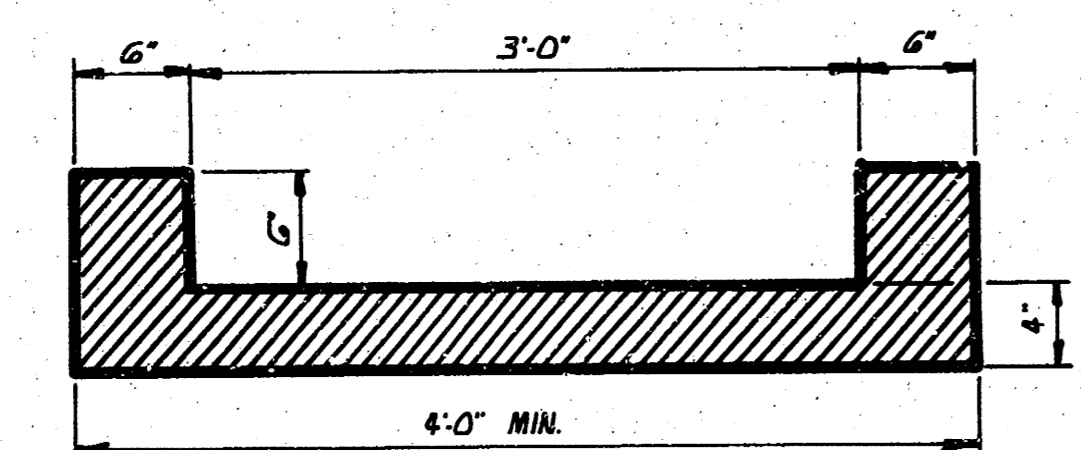
FILMED FROM THE BEST AVAILABLE COPY



SCALE: 1" = 20'

CAUTION: HIGH PRESSURE COOP PIPELINE. CONTACT BILL STULL 24 HRS. PRIOR TO EXCAVATION AT: 1-316-221-2107

- NOTE:**
- ASPHALT HOOPUP SURFACE COURSE MIX SHALL BE SC-1, ASPHALT BASE COURSE MIX SHALL BE BC-1.
 - MATERIAL FOR ASPHALT FLUME SHALL BE BASE COURSE MIX BC-1.



Δ=40°18'12" R=239.50' T=87.89' L=168.47' LC=165.02'

CURVE DATA BASED ON CENTERLINE RAD, Δ=20°09'10.6"

STATION	ARC	CHORD	LENGTH	DEFLECTION	TOTAL DEFLECTION
		8' OFF L.C.	8' OFF R.C.		
1+43	---	---	---	---	0°00'00"
1+50	7.00'	7.76'	6.26'	0°50'15"	0°50'15"
1+75	25.00'	27.70'	22.28'	2°59'25"	3°49'40"
2+00	25.00'	27.70'	22.28'	2°59'25"	6°49'05"
2+25	"	"	22.28'	2°59'25"	9°48'30"
2+50	"	"	22.78'	2°59'25"	12°47'55"
2+75	"	"	22.78'	2°59'25"	15°47'20"
3+00	25.00'	27.70'	22.78'	2°59'25"	18°46'45"
3+11.47	11.47'	12.71'	10.23'	1°22'21"	20°09'10"

Dist./ft. = 7.176924

INTERSECTION QUANTITIES

---	S.Y.	Concrete Pavement
144.0	S.Y.	8" Asphalt Conc. Pavement (5" Bituminous Base)
---	S.Y.	Bituminous Base
---	L.F.	Combined Curb & Gutter
47.1	L.F.	Monolithic Edge Curb
2	Ea.	4" Wheelchair Ramp
---	S.F.	4" Walk
---	C.Y.	Excavation
---	C.Y.	Compacted Fill
---	Lbs.	Reinforcing Steel
264.3	S.Y.	Manipulation
---	Tons	Lime or Cement
117.0	S.Y.	V.G. 5" Concrete & 3" Asphalt Concrete Base

36TH ST. NORTH
 W. Line Inwood to W. Line Comolara Office Center

PAVING PLAN

City Proj. No: 472-76-245-81407-000-001

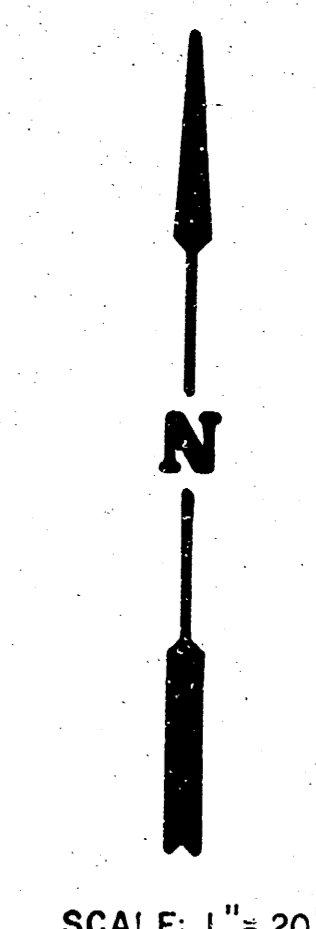
MID-KANSAS ENGINEERING CONSULTANTS PA
 240 NORTH ROCK ROAD
 SUITE 130
 WICHITA, KANSAS 67206

682-6561

Design: _____
 Drawn by: _____
 Checked by: _____
 Date: _____
 Job no: _____

Sheet 3 of 12

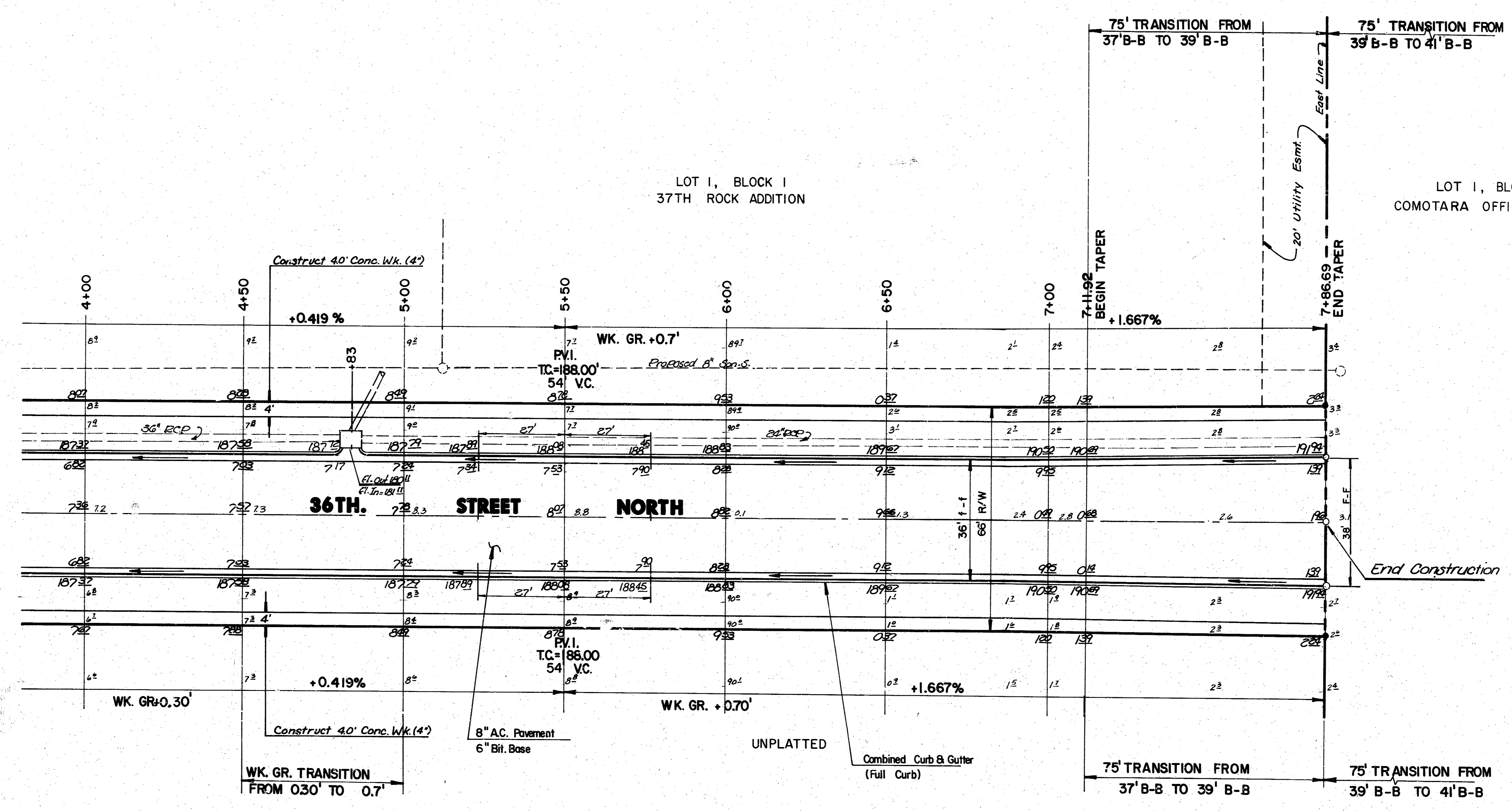
FILMED FROM THE BEST AVAILABLE COPY



SCALE: 1" = 20'

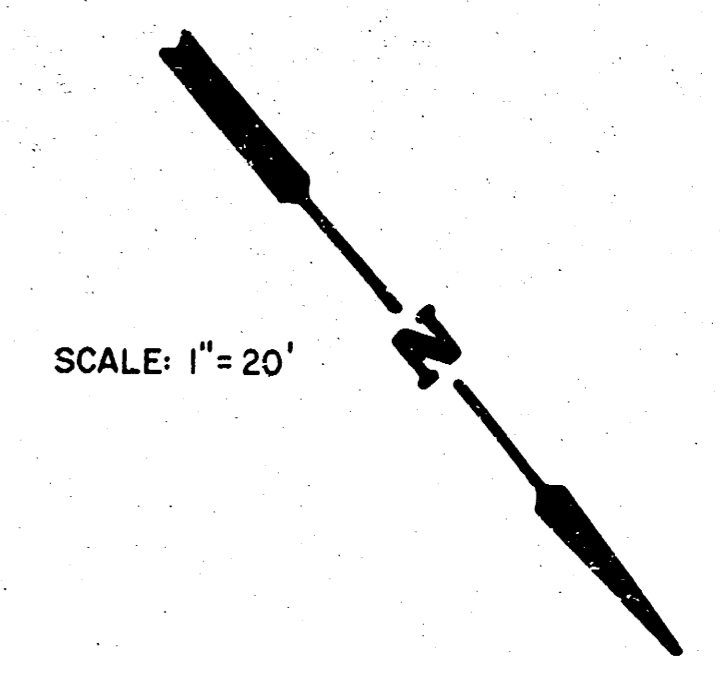
LOT 1, BLOCK 1
37TH ROCK ADDITION

LOT 1, BLOCK 3
COMOTARA OFFICE CENTER

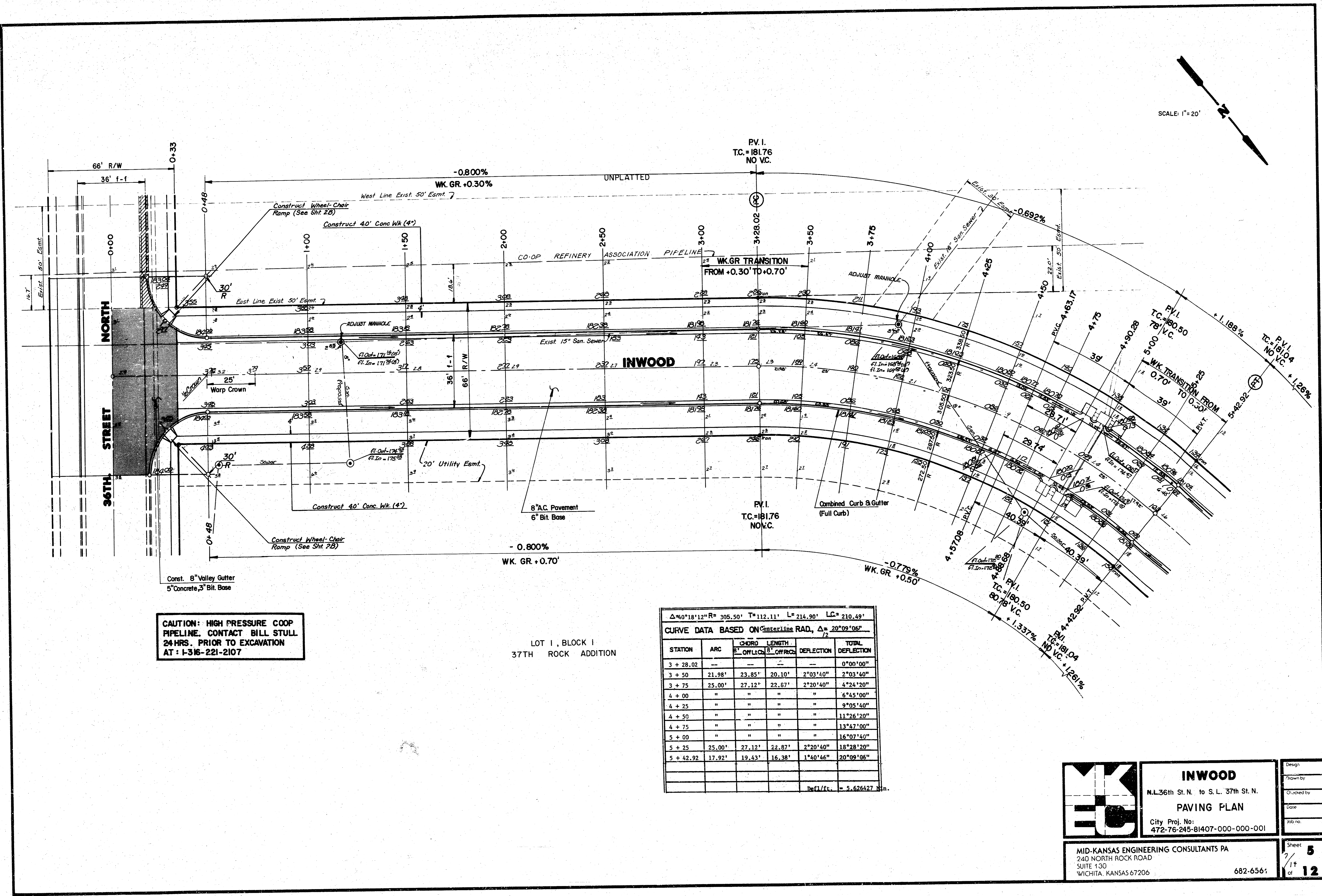


	36TH ST. NORTH	Design: AMS
	INWOOD to W.L. Comotara Office Cntr.	Drawn by:
	PAVING PLAN	Checked by: KHB
	City Proj. No: 472-76-245-81407-000-000-001	Date: JAN. 198 Job no.:
MID-KANSAS ENGINEERING CONSULTANTS PA 240 NORTH ROCK ROAD SUITE 130 WICHITA, KANSAS 67206	682-6561	Sheet 4 of 12

FILMED FROM THE BEST AVAILABLE COPY



SCALE: 1" = 20'



CAUTION: HIGH PRESSURE COOP PIPELINE. CONTACT BILL STULL 24 HRS. PRIOR TO EXCAVATION AT: 1-316-221-2107

LOT 1, BLOCK 1
37TH ROCK ADDITION

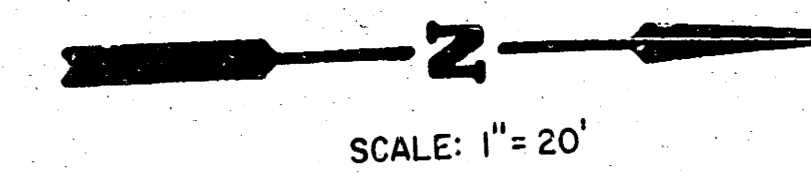
$\Delta = 40^\circ 18' 12''$ $R = 305.50'$ $T = 112.11'$ $L = 214.90'$ $LC = 210.49'$
 CURVE DATA BASED ON CENTERLINE RAD, $\Delta = 20^\circ 09' 06''$

STATION	ARC	CHORD LENGTH		DEFLECTION	TOTAL DEFLECTION
		B' OFF L/C	B' OFF R/C		
3 + 28.02	---	---	---	---	0°00'00"
3 + 50	21.98'	23.85'	20.10'	2°03'40"	2°03'40"
3 + 75	25.00'	27.12'	22.67'	2°20'40"	4°24'20"
4 + 00	"	"	"	"	6°45'00"
4 + 25	"	"	"	"	9°05'40"
4 + 50	"	"	"	"	11°26'20"
4 + 75	"	"	"	"	13°47'00"
5 + 00	"	"	"	"	16°07'40"
5 + 25	25.00'	27.12'	22.87'	2°20'40"	18°28'20"
5 + 42.92	17.92'	19.43'	16.38'	1°40'46"	20°09'06"

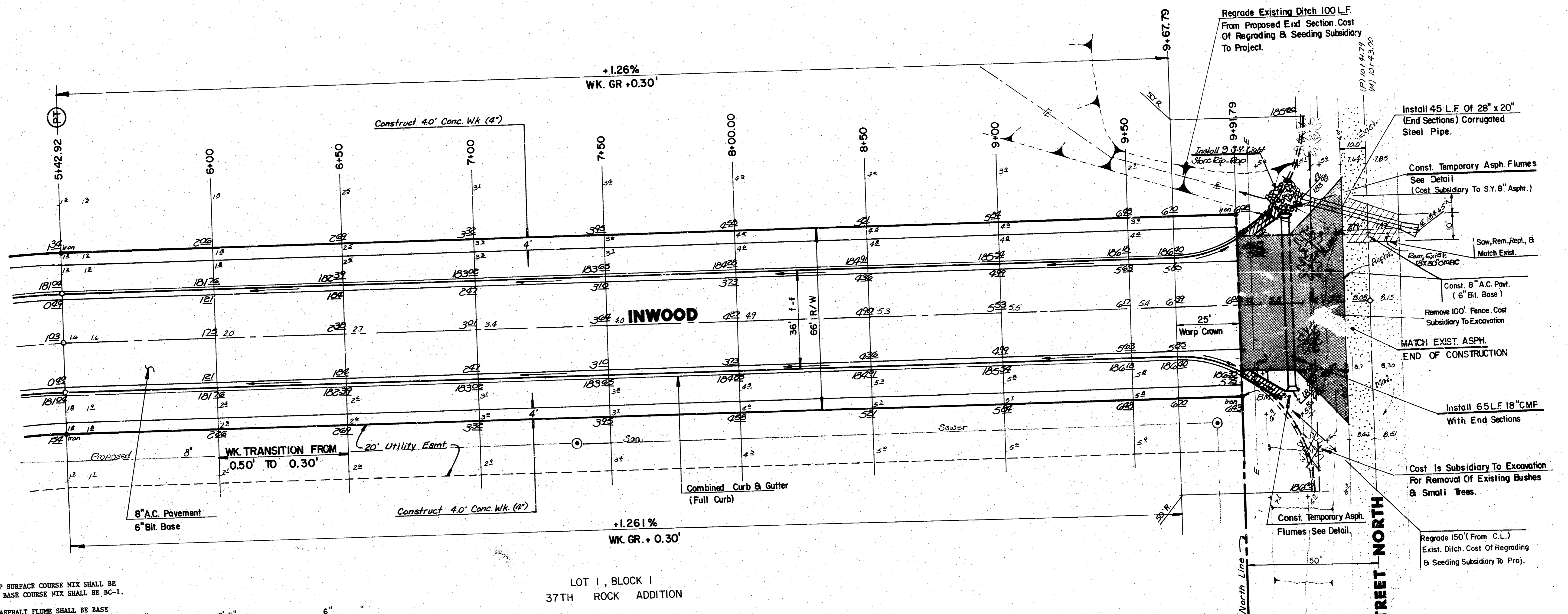
Def/ft. = 5.626427 H.H.

	INWOOD	Design
	N.L. 36th St. N. to S.L. 37th St. N.	Drawn by
	PAVING PLAN	Checked by
	City Proj. No: 472-76-245-81407-000-000-001	Date
MID-KANSAS ENGINEERING CONSULTANTS PA 240 NORTH ROCK ROAD SUITE 130 WICHITA, KANSAS 67206	682-6561	Sheet 5 of 12

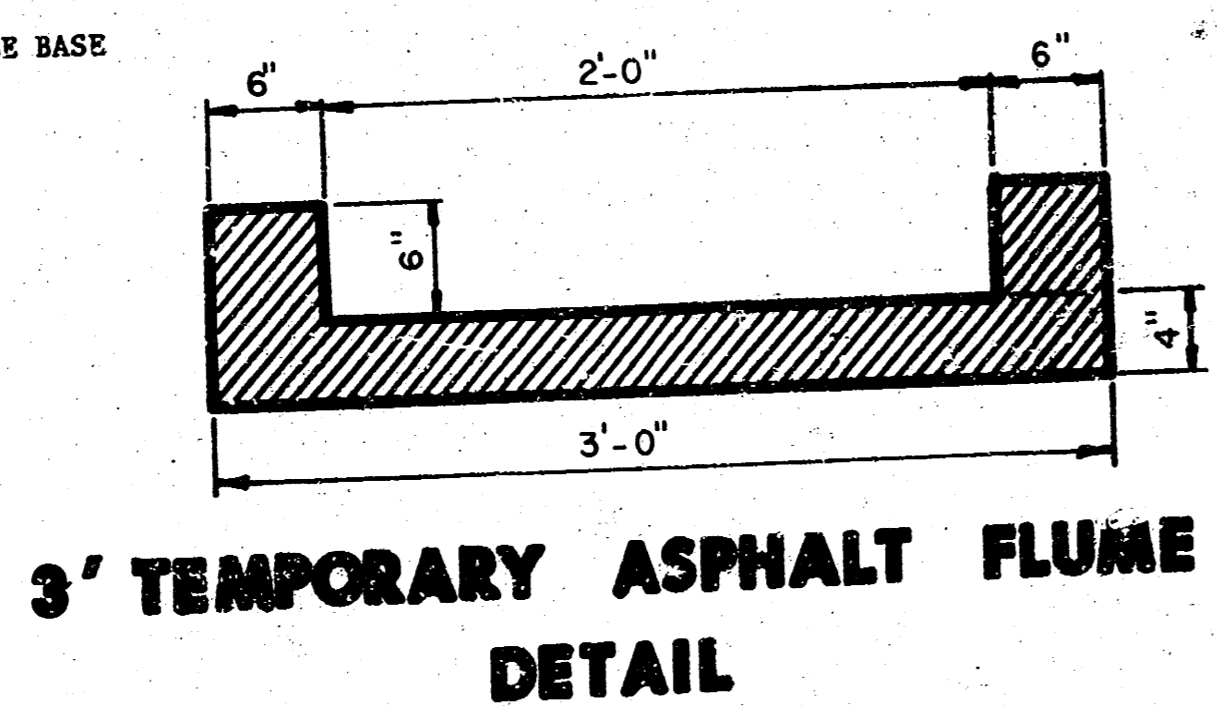
FILMED FROM THE BEST AVAILABLE COPY



UNPLATTED



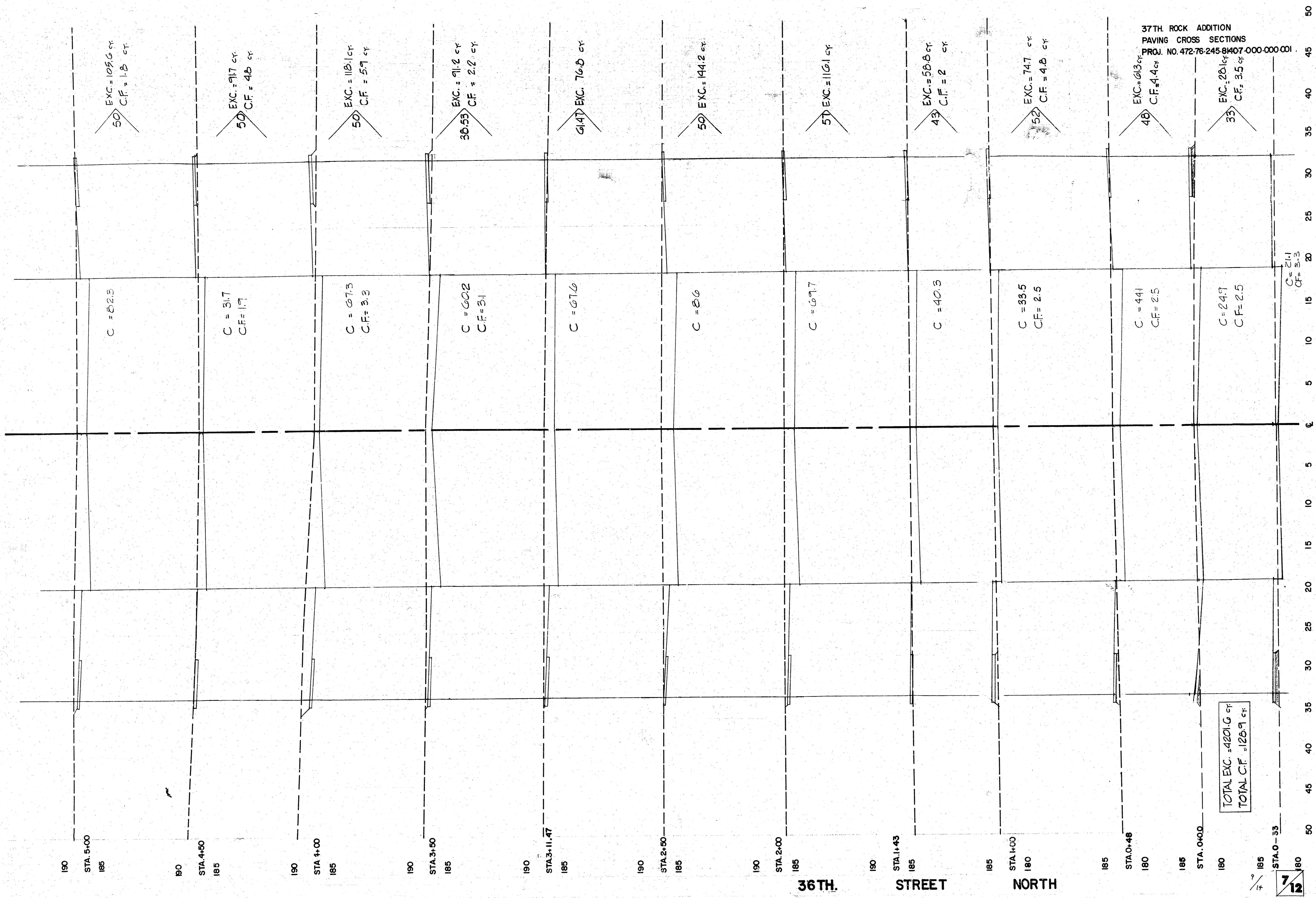
- NOTE:
1. ASPHALT HOOKUP SURFACE COURSE MIX SHALL BE SC-1, ASPHALT BASE COURSE MIX SHALL BE BC-1.
 2. MATERIAL FOR ASPHALT FLUME SHALL BE BASE COURSE MIX BC-1.



LOT 1, BLOCK 1
37TH ROCK ADDITION

	INWOOD	Design
	N. Line 36th. St. No. to S. Line 37th. St. N.	Drawn by
	PAVING PLAN	Checked by
	City Proj. No: 472-76-245-81407-000-001	Date
MID-KANSAS ENGINEERING CONSULTANTS PA 240 NORTH ROCK ROAD SUITE 130 WICHITA, KANSAS 67206	682-6561	Sheet 6 of 12

FILMED FROM THE BEST AVAILABLE COPY

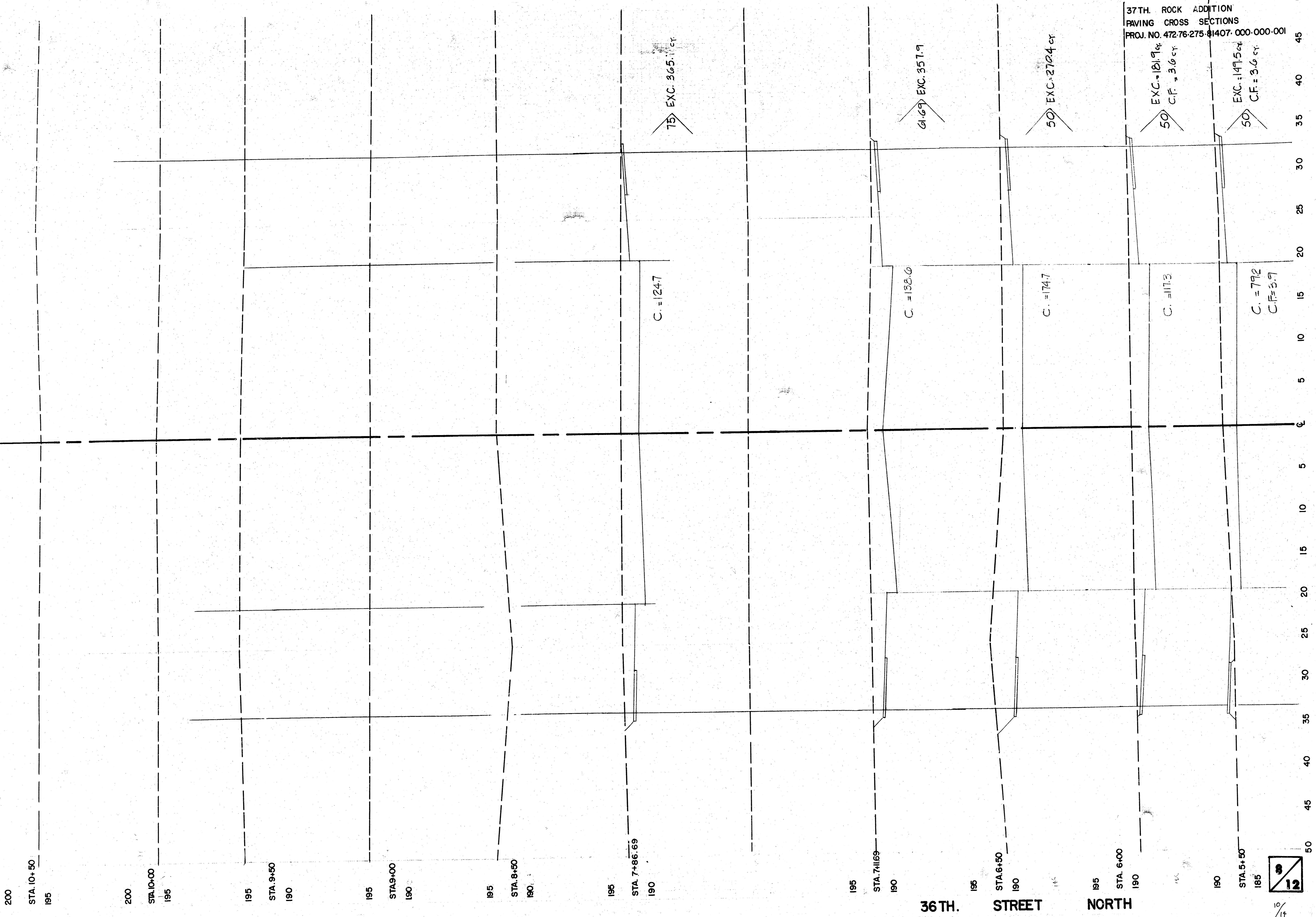


37TH ROCK ADDITION
PAVING CROSS SECTIONS
PROJ. NO. 472-76-245-9407-000-000-001

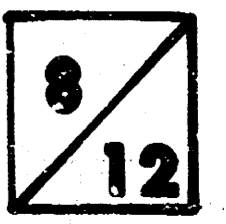
TOTAL EXC. = 2420.6 cy
TOTAL C.F. = 128.9 cy

7/12

FILMED FROM THE BEST AVAILABLE COPY



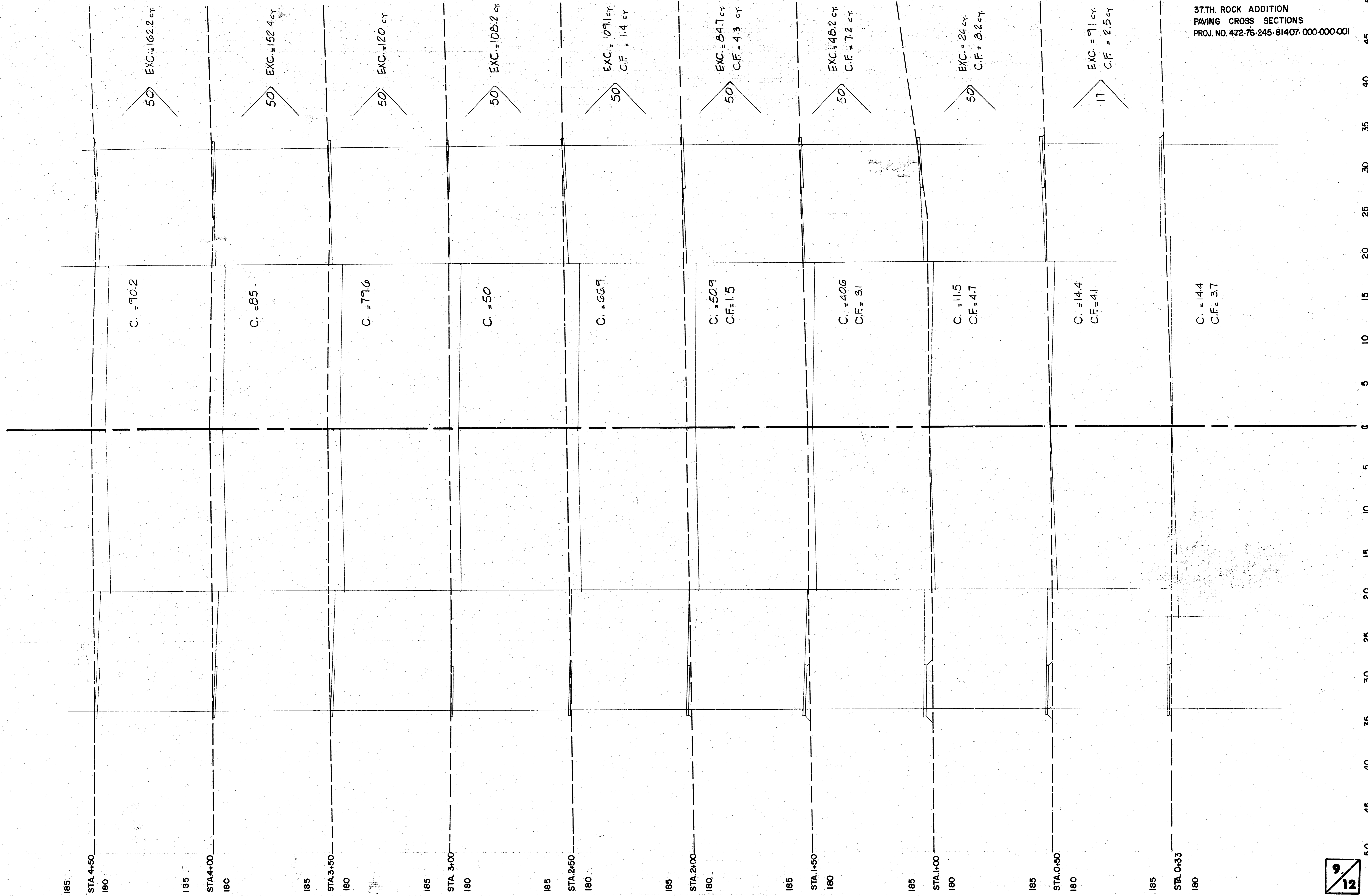
37TH. ROCK ADDITION
 PAVING CROSS SECTIONS
 PROJ. NO. 472-76-275-1407-000-000-001



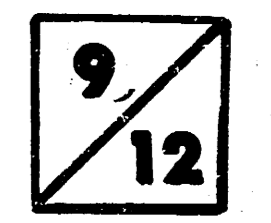
1/4" = 1'

FILMED FROM THE BEST
 AVAILABLE COPY

37TH. ROCK ADDITION
 PAVING CROSS SECTIONS
 PROJ. NO. 472-76-245-81407-000-000-001

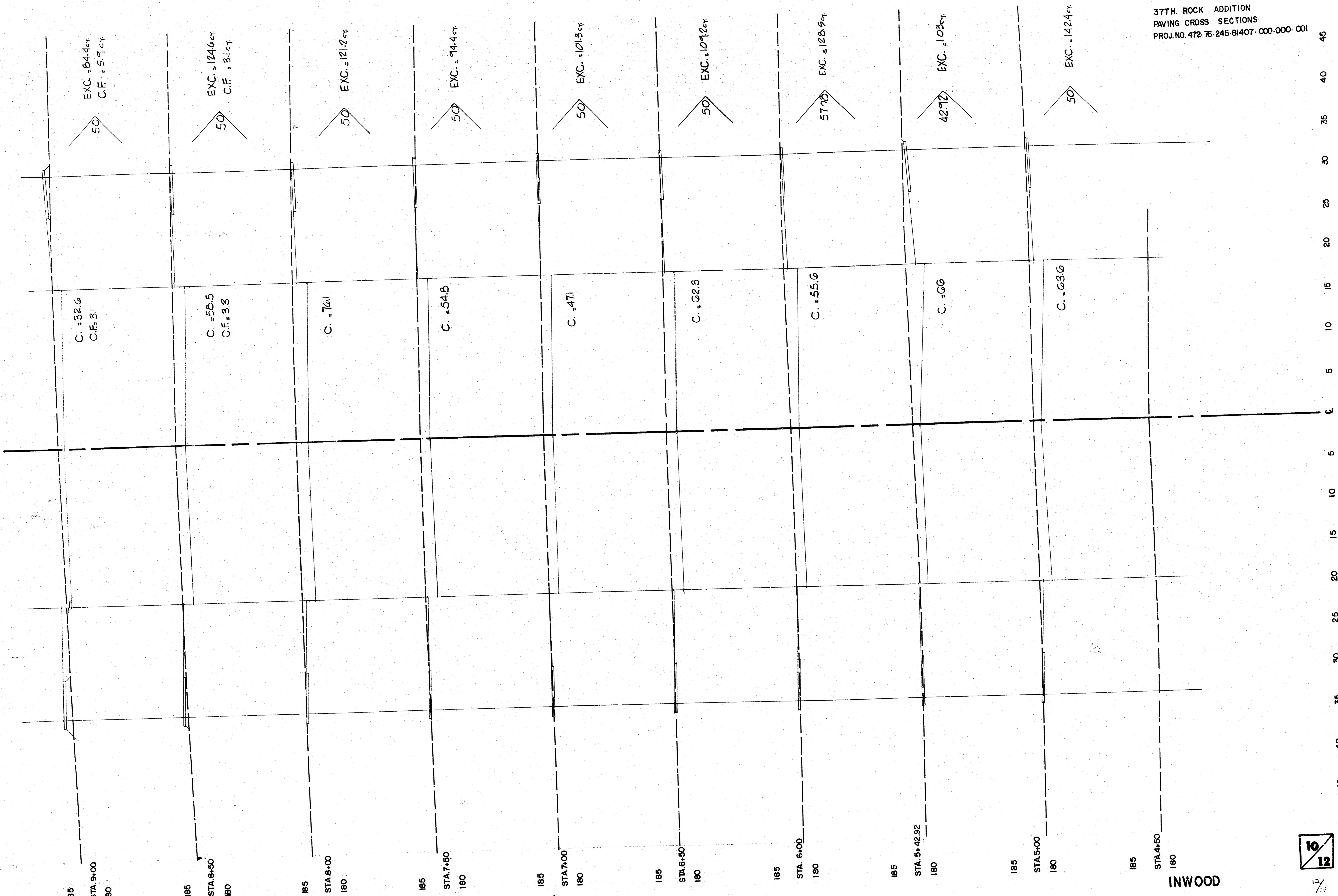


INWOOD



FILMED FROM THE BEST AVAILABLE COPY

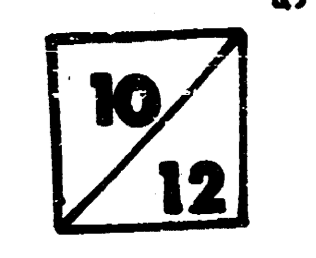
50 45 40 35 30 25 20 15 10 5 0 5 10 15 20 25 30 35 40 45 50



37TH. ROCK ADDITION
 PAVING CROSS SECTIONS
 PROJ. NO. 472-76-245-81407-000-000-001

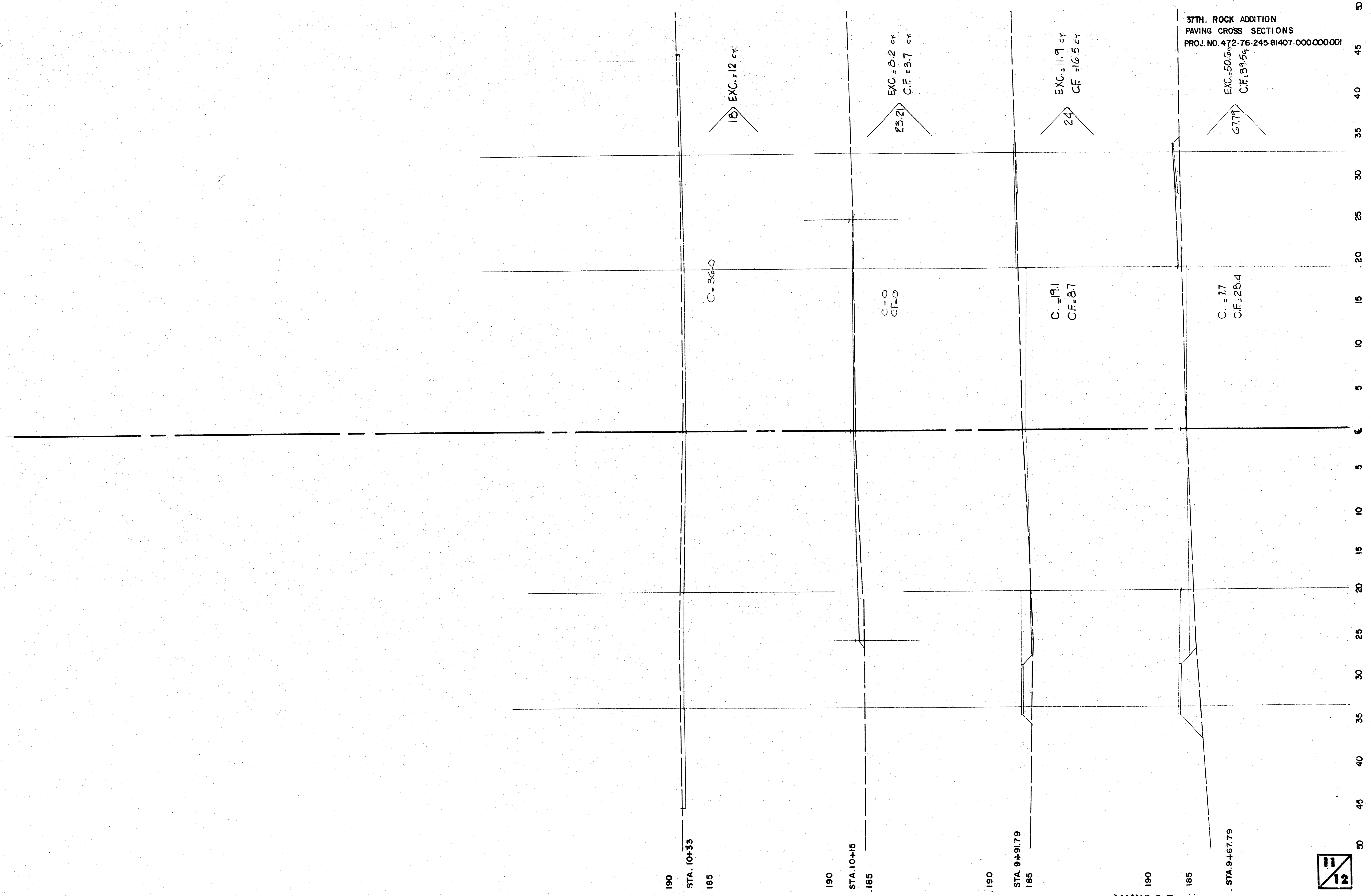
50
45
40
35
30
25
20
15
10
5
0
5
10
15
20
25
30
35
40
45
50

INWOOD

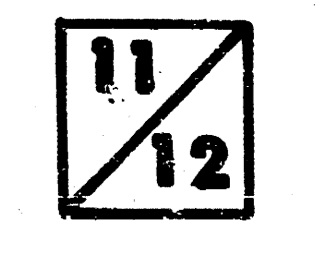


FILMED FROM THE BEST AVAILABLE COPY

37TH. ROCK ADDITION
PAVING CROSS SECTIONS
PROJ. NO. 472-76-245-81407-000000001



INWOOD

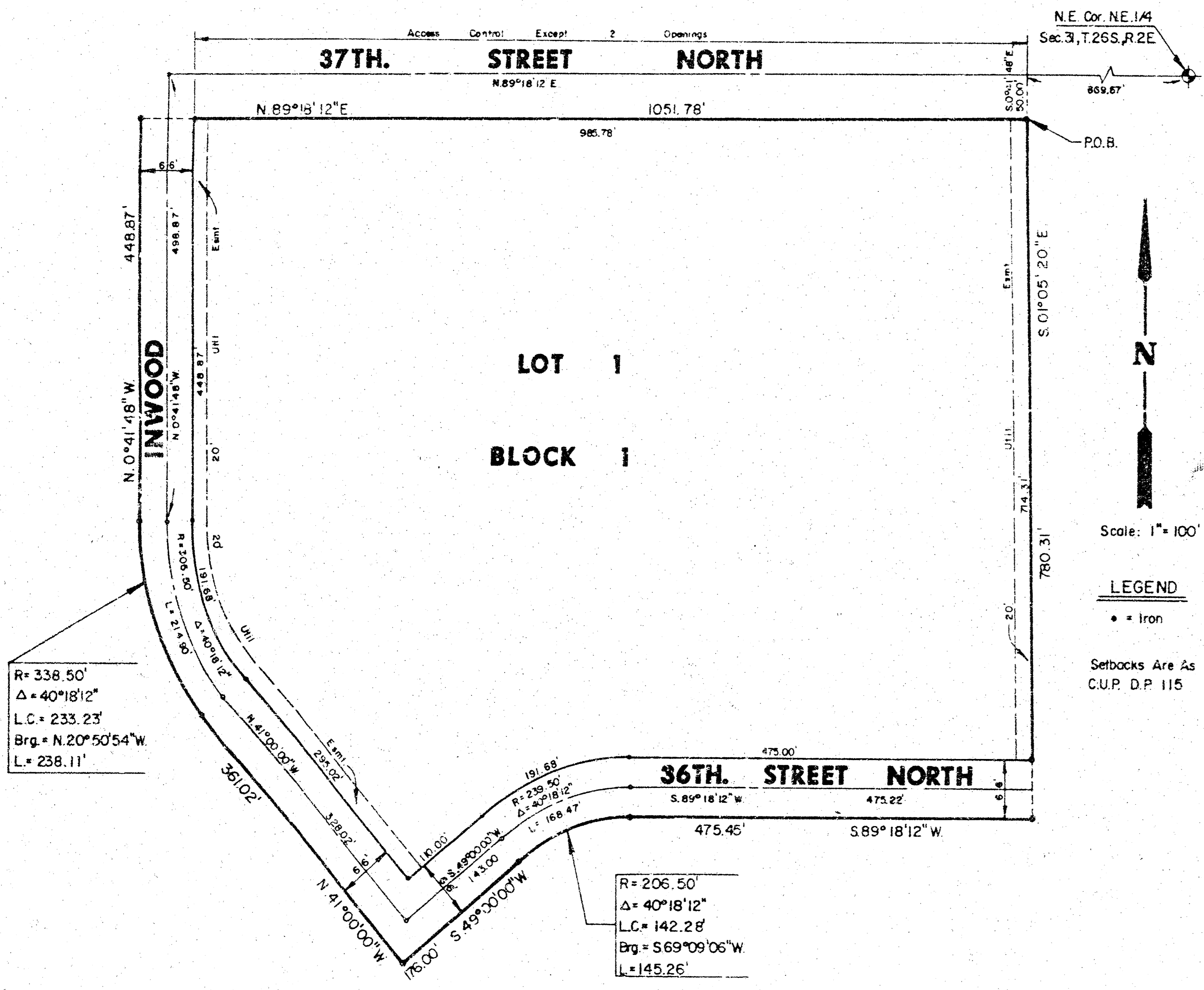


13/14

FILMED FROM THE BEST AVAILABLE COPY

37TH ROCK ADDITION

AN ADDITION TO WICHITA, SEDGWICK COUNTY, KANSAS



I, Michael D. Harding, a Civil Engineer in Kansas, do hereby certify that I have been in responsible charge of surveying and platting of "37th Rock Addition", an addition to Wichita, Sedgwick County, Kansas, into a Lot, a Block, and Streets, the same being accurately set forth in the accompanying plat and described herein:

A tract of land in the northeast quarter of Section 31, Township 26 South, Range 2 east of the 6th Principal Meridian, more particularly described as follows:

Beginning at a point 669.67 feet westerly bearing S 89° 18' 12" W and 50.00 feet southerly bearing S 0° 41' 48" E from the northeast corner of the said northeast quarter section, said point also being on the south line of 37th Street North; thence southerly bearing S 0° 05' 20" E, 780.31 feet; thence S 89° 13' 12" W, 475.45 feet to the beginning of a curve to the left; having a radius of 206.50 feet, a central angle of 40° 18' 12", a long chord bearing S 69° 09' 06" W, 142.28 feet; thence along said curve a distance of 145.26 feet; thence S 49° 00' 00" W, 176.00 feet; thence W 41° 00' 00" W, 361.02 feet to the beginning of a curve to the right, having a radius of 338.50 feet, a central angle of 40° 18' 12", a long chord bearing N 20° 50' 54" W, 233.23 feet; thence along said curve a distance of 238.11 feet; thence N 0° 41' 48" W, 448.87 feet to a point on the south line of 37th Street North thence easterly along said south line bearing N 89° 18' 12" E 1051.78 feet to the point of beginning containing 19.06 acres more or less.

I hereby certify that the details of this plat are correct to the best of my knowledge and belief this 23rd day of July, 1984.

Michael D. Harding
Michael D. Harding
Mid-Kansas Engineering Consultants, P.A.
240 N. Rock Road, Suite 139
Wichita, KS 67206

MICHAEL D. HARDING
LICENSED
KANSAS
9359
PROFESSIONAL ENGINEER

Know all men by these presents that we the undersigned property owners of the land as above set forth in the Civil Engineers Certificate, have caused the same to be surveyed and platted into a lot, a block, and streets, the same to be known as "37th Rock Addition" an addition to Wichita, Sedgwick County, Kansas. The streets are hereby dedicated to and for the use of the public. Easements for the construction and maintenance of public utilities are hereby granted as indicated. All abutters rights of access to or from 37th Street North over and across the north line of said "37th Rock Addition" are hereby granted to the City of Wichita, provided, however, that Lot 1 Block 1 shall have access to 37th Street North at two locations to be determined by the Engineer of the City of Wichita. Building setbacks shall be as shown on the Comatare Residential Community Unit Plan (D.P. 115) on file in the Wichita-Sedgwick County Metropolitan Area Planning Department Office, 1000 Flood, 452 N. Main, Wichita, Kansas.

Woodlawn Development Company
a partnership

Donald J. Abiah
Attorney in fact for Woodlawn Development Company

STATE OF KANSAS SS:
COUNTY OF SEDGWICK

Be it remembered that on this 23rd day of July, 1984, before me, a Notary Public in and for said State and County, came Donald J. Abiah, Attorney in fact for Woodlawn Development Company on behalf of Woodlawn Development Company, a partnership, to me personally known to be the same person who executed the foregoing instrument of writing and duly acknowledged the execution of the same. In testimony whereof I have hereunto set my hand and affixed my notarial seal the day and year above written.

Alma D. Gutierrez
Alma D. Gutierrez
Notary Public
My Appointment Expires: 12/31/1985

We the First National Bank of St. Paul, mortgagees on the above described property do hereby consent to the plat of "37th Rock Addition".

The First National Bank of St. Paul
By: *Phillip S. Frick*
Phillip S. Frick
Attorney in fact for the First National Bank of St. Paul

STATE OF KANSAS SS:
COUNTY OF SEDGWICK

Be it remembered on this 23rd day of July, 1984, before me, a Notary Public in and for said State and County, came the First National Bank of St. Paul, by Phillip S. Frick, Attorney in fact for the First National Bank of St. Paul, to me personally known to be the same person who executed the foregoing instrument of writing and duly acknowledged the execution of the same. In testimony whereof, I have hereunto set my hand and affixed my notarial seal the day and year above written.

Patti L. Whitney
Patti L. Whitney
Notary Public
My Appointment Expires: January 17, 1988

This plat of "37th Rock Addition" has been submitted to and approved by the Wichita-Sedgwick County Metropolitan Area Planning Commission, Wichita, Kansas.

Dated this 12th day of July, 1984.

Wichita-Sedgwick County Metropolitan Area Planning Commission
Robert K. Chisholm
Robert K. Chisholm, Chairman
Robert A. Lakin
Robert A. Lakin, Secretary

This plat approved and all dedications shown hereon, if any, accepted by the City Commission of the City of Wichita, Kansas, this 7th day of August, 1984.

Robert E. Knight
Robert E. Knight, Mayor
Donald C. Gistic
Donald C. Gistic, City Clerk

This plat approved and all dedications shown hereon, if any, accepted by the Board of County Commissioners of Sedgwick County, Kansas, this 24th day of August, 1984.

Jack Spratt
Jack Spratt, Chairman
Donald E. Bragg
Donald E. Bragg, Commissioner
Tom Scott
Tom Scott, Commissioner

Attest: *Michael T. Sawyer*
Michael T. Sawyer, Chief Deputy
County Clerk
Dorothy K. White
Dorothy K. White, County Clerk

Entered on transfer record this 24th day of August, 1984.

Michael T. Sawyer
Michael T. Sawyer, Chief Deputy
County Clerk
Dorothy K. White
Dorothy K. White, County Clerk

STATE OF KANSAS SS:
COUNTY OF SEDGWICK

This is to certify that this instrument was filed for record in the Register of Deeds Office at 10:30AM, 24th day of August, 1984.

Bette F. Wilcox
Bette F. Wilcox, Register of Deeds
Pat Kettler
Pat Kettler, Deputy