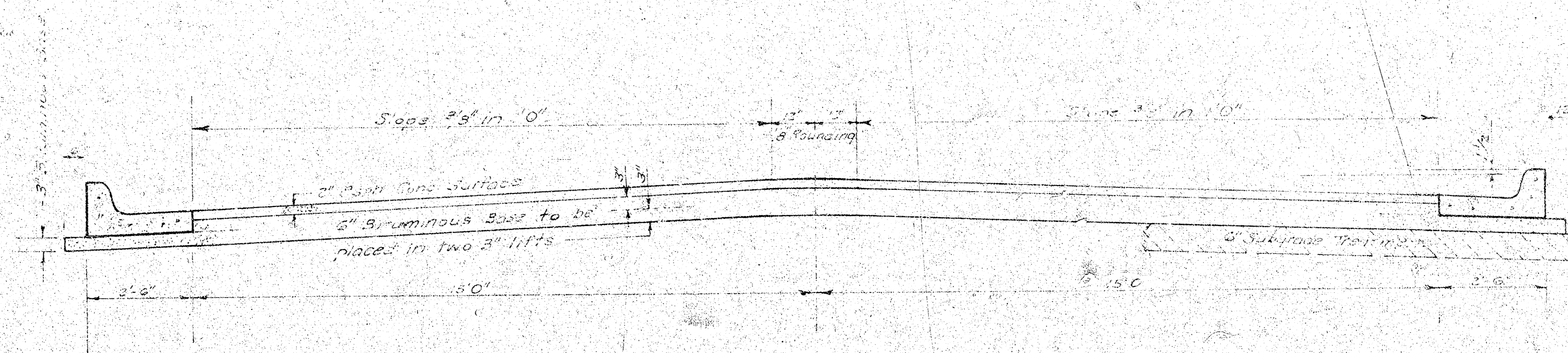


THURMAN COURT

N.L. THURMAN STREET to & INCL. CUL-DE-SAC

Proj. No. DAKS574048



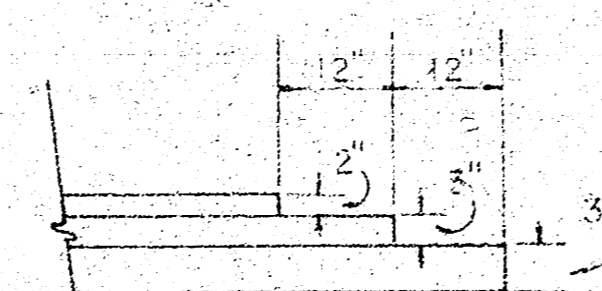
TYPICAL SECTION

35' ASPHALTIC CONCRETE PAVEMENT WITH BITUMINOUS BASE

A TACK COAT OF EMULSIFIED ASPHALT (SS-1H) SHALL BE APPLIED AT AN APPROXIMATE RATE 0.05 GALLONS PER SQ YD BETWEEN LIFTS OF ASPHALTIC MATERIALS WHEN ORDERED BY THE ENGINEER. TACK COAT WILL NOT BE PAID FOR DIRECTLY AND SHALL BE CONSIDERED AS SUBSIDIARY TO PRICE BID FOR ASPHALTIC PAVEMENT.

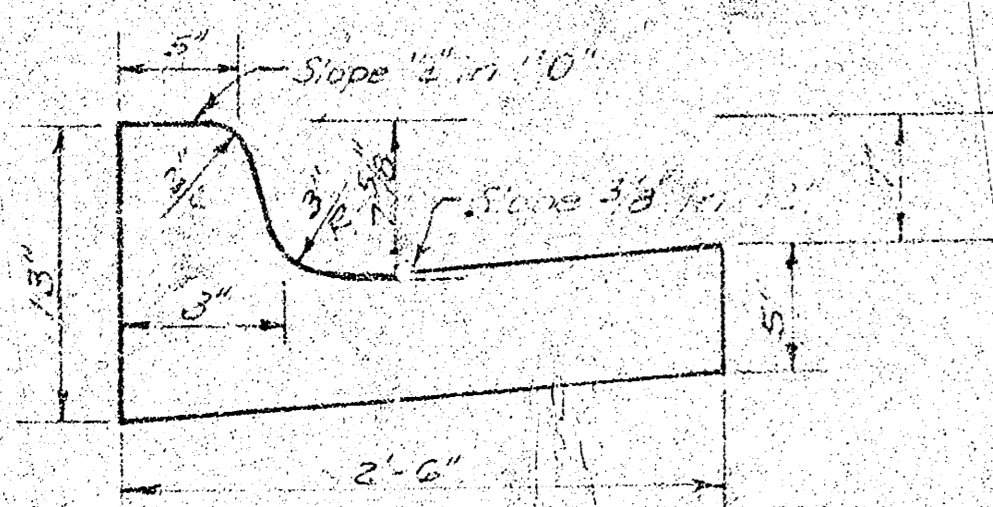
BITUMINOUS BASE AND ASPHALTIC CONCRETE WEARING SURFACE SHALL BE PLACED WITH A LAYDOWN MACHINE HAVING AUTOMATIC ELECTRONIC CONTROLS FOR CROWN AND GRADE. CONSTRUCTION JOINTS IN EACH LIFT SHALL BE STAGGERED A MINIMUM DISTANCE OF 1' WITH JOINTS IN PRECEDING LIFTS AND PLACED SUCH THAT A JOINT WILL BE CONSTRUCTED ON THE CENTERLINE IN THE TOP LIFT.

DETAIL OF TRANSVERSE CONSTRUCTION JOINTS

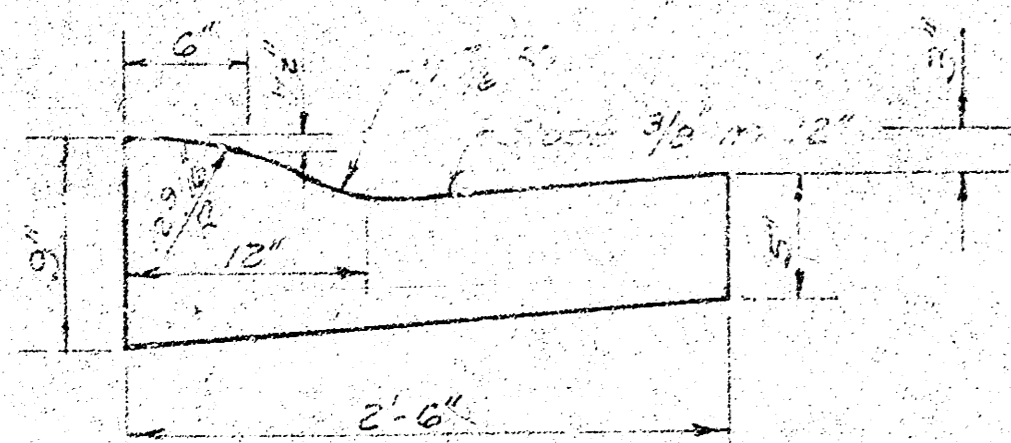


TRANSVERSE CONSTRUCTION JOINTS SHALL BE CONSTRUCTED IN FLEXIBLE BASE PAVEMENTS AT LOCATIONS WHERE PAVEMENT TEMPORARILY ENDS TO FACILITATE FUTURE PAVEMENT CONSTRUCTION AS SHOWN BY DETAIL. THE COST OF CONSTRUCTING THE TRANSVERSE CONSTRUCTION JOINTS SHALL NOT BE MEASURED OR PAID FOR DIRECTLY BUT SHALL BE INCLUDED IN THE BID PRICE FOR SQUARE YARDS OF ASPHALTIC CONCRETE PAVEMENT.

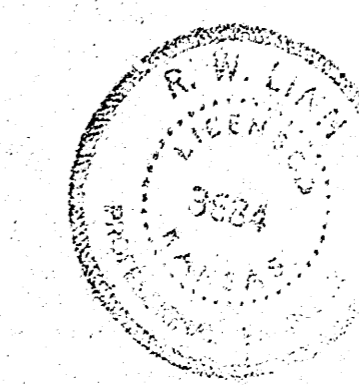
COMBINED CURB & GUTTER



ROLL TYPE CURB & GUTTER



The A.C. Pavement between the curb and gutter shall be paid as 35 sq yds. 6" A.C. Pavement to Bituminous Base. The Bituminous Base under the curb and gutter shall be paid as 35 sq yds. 3" Bituminous Base.

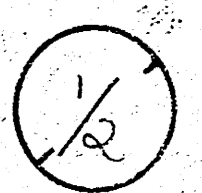


CITY OF WICHITA KANSAS

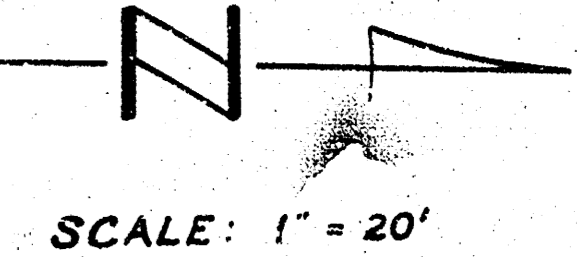
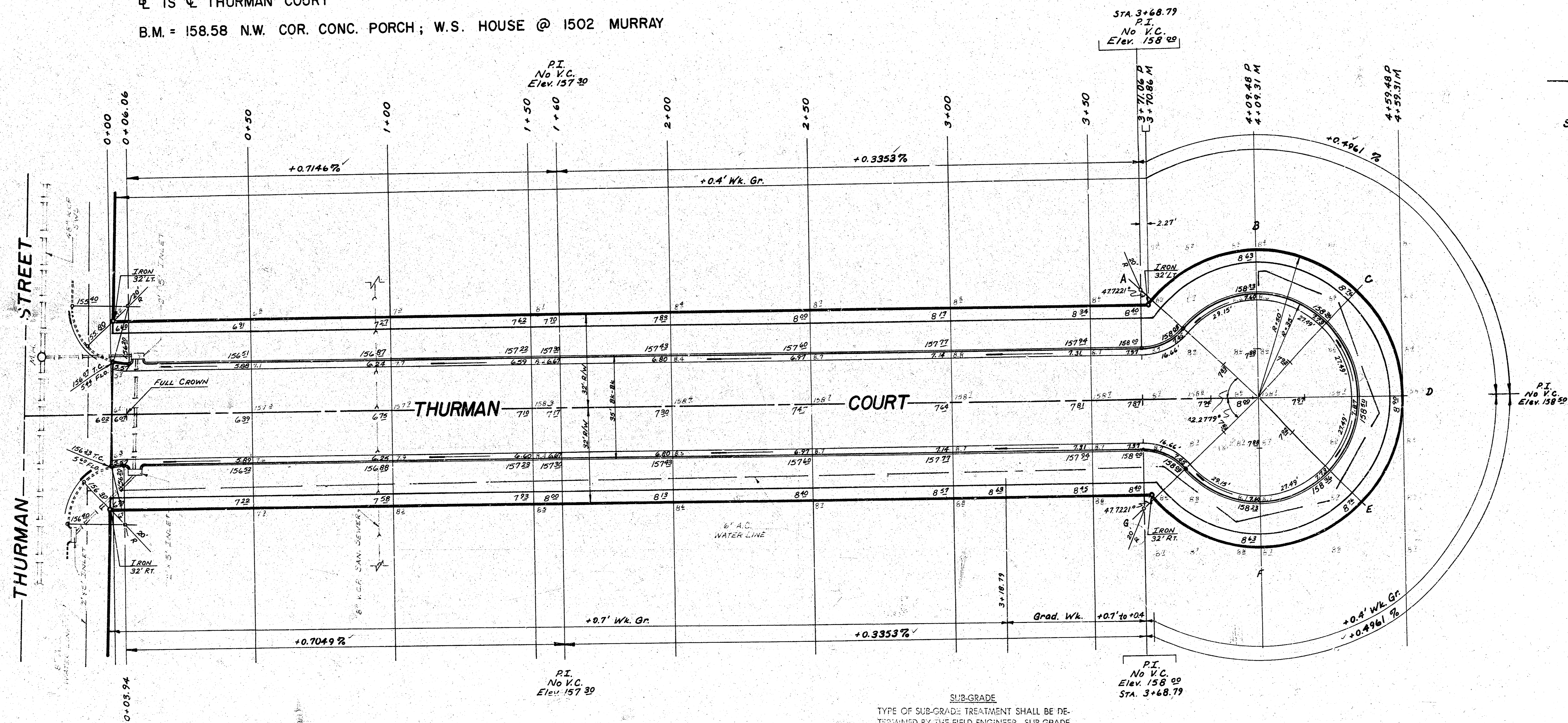
DEPARTMENT of PUBLIC WORKS - Engineering Division.

R. W. LINN CITY ENGINEER

DATE _____ Proj. No. DAKS574048



IS THURMAN COURT
 B.M. = 158.58 N.W. COR. CONC. PORCH; W.S. HOUSE @ 1502 MURRAY



SURVEY DRAWING
 Plan shown
 Checked
 BH 200-108

SUB-GRADE
 TYPE OF SUB-GRADE TREATMENT SHALL BE DETERMINED BY THE FIELD ENGINEER. SUB-GRADE TREATMENT MAY CONSIST OF LIME TREATMENT, CEMENT TREATMENT, SUB-GRADE MODIFICATION, OR ANY COMBINATION OF THESE.

NOTE TO FIELD ENGINEER & CONTRACTOR
 Grade parking and clear right-of-way for proposed sidewalk. Compact fill in sidewalk area. TO BE CONSTRUCTED BY "OTHERS".

NOTE: ONLY 4 DRIVES TO BE INCLUDED IN THIS PROJECT

EARTHWORK:

EXCAVATION	1360.0 C.Y.
+10%	136.0 C.Y.
TOTAL	1496.0 C.Y.
COMP. FILL	4.8 C.Y.
+10%	0.5 C.Y.
TOTAL	5.3 C.Y.
MANIPULATION = 2009.7 Sq. Yds.	

THURMAN COURT
 N.L. THURMAN STREET
 TO & INCLUDING CUL-DE-SAC
 35' B-B A.C. Pav't W/ Comb. Ch. & Gtr.
CITY OF WICHITA, KANS.
 R.W. LINN - CITY ENGINEER
 Proj. No. DAK5574048 Date 2/12

