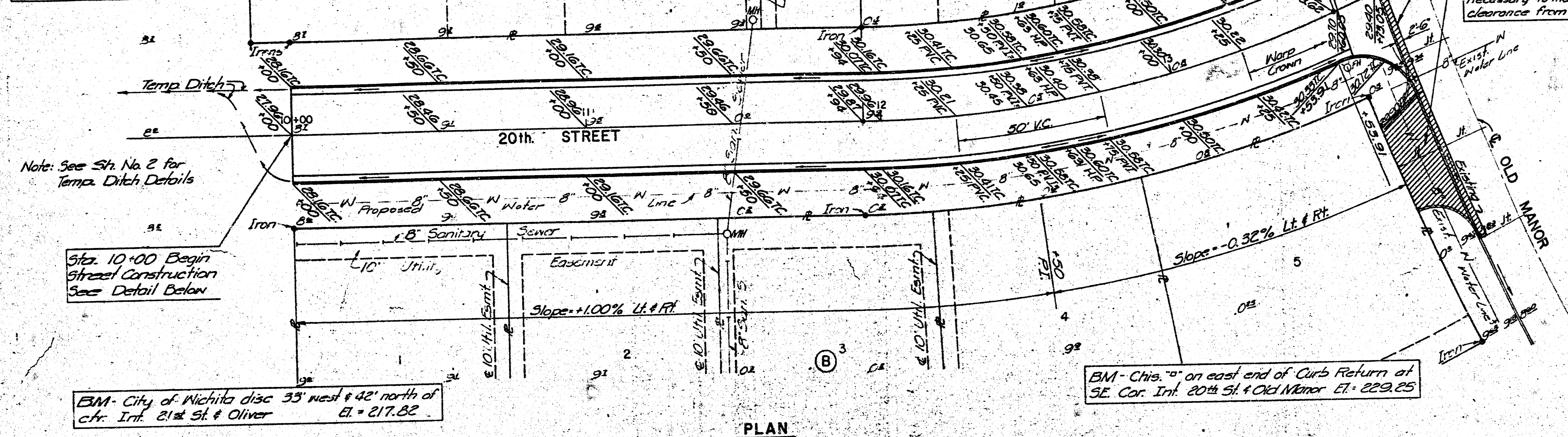


Station	Width
10+36.0 RT	24'-0"
10+73.5 LT	24'-0"
11+08.0 RT	24'-0"
12+30.5 RT	24'-0"
12+43.5 LT	24'-0"
12+71.7 RT	10'-8"
12+85.8 RT	10'-8"
13+26.9 RT	10'-8"



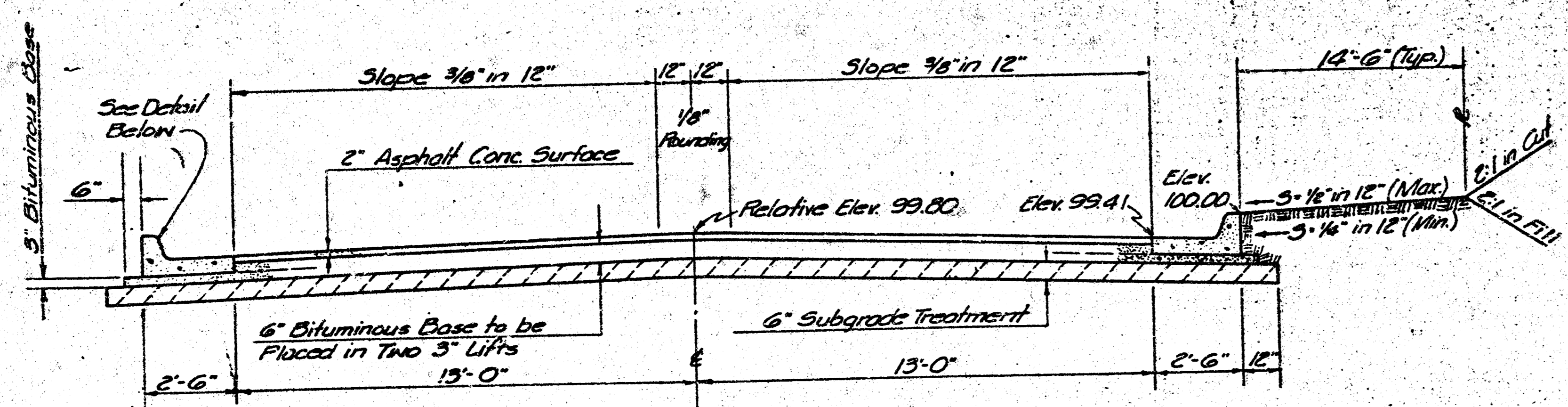
Note: See Sta. No. 2 for Temp. Ditch Details

Sta. 10+00 Begin Street Construction See Detail Below

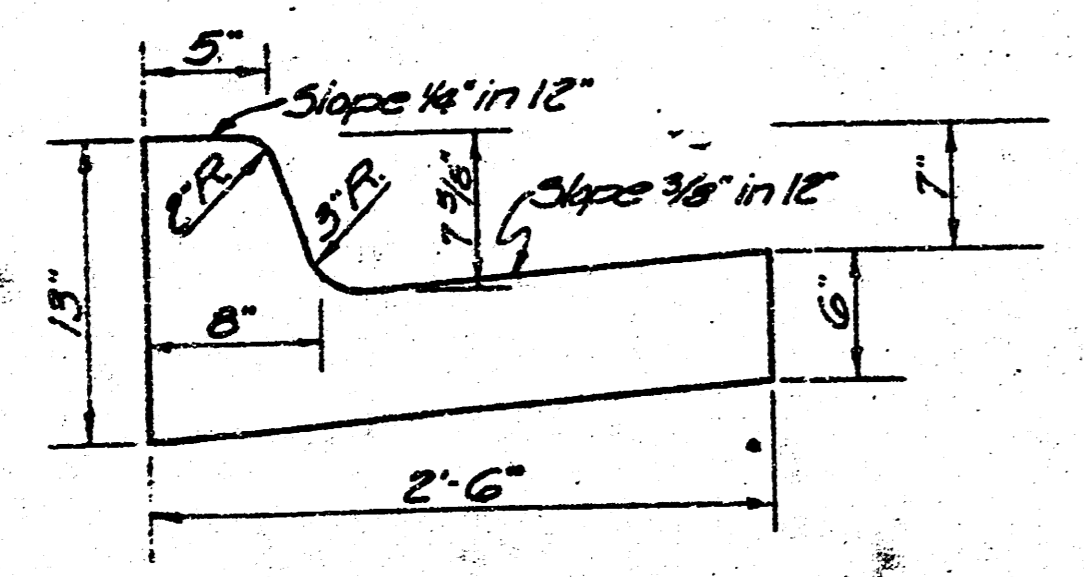
BM - City of Wichita disc 33' west & 42' north of cfr. Int. 21st St & Oliver El. = 217.82

BM - Chis. on east end of Curb Return at SE Cor. Int. 20th St & Old Manor El. = 229.25

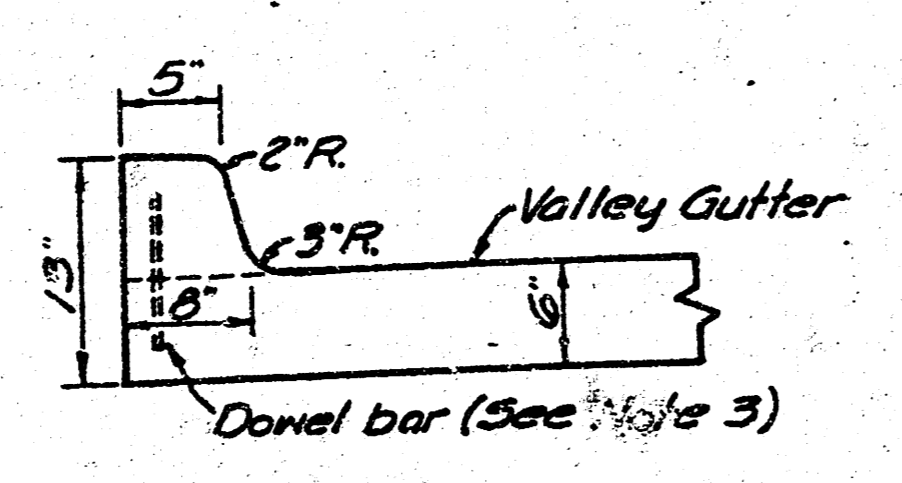
PLAN



TYPICAL SECTION  
3\"/>



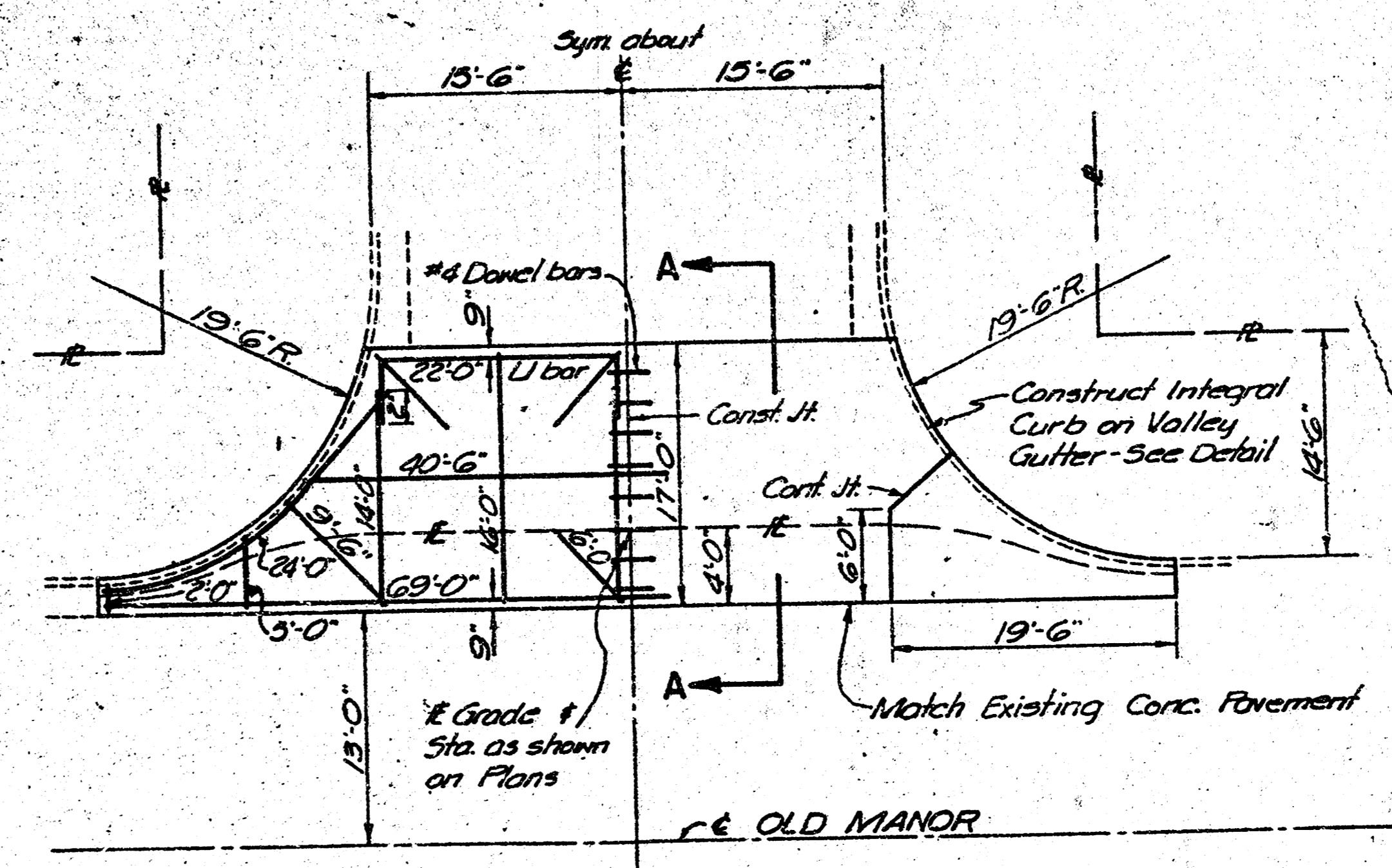
STANDARD CURB & GUTTER DETAIL



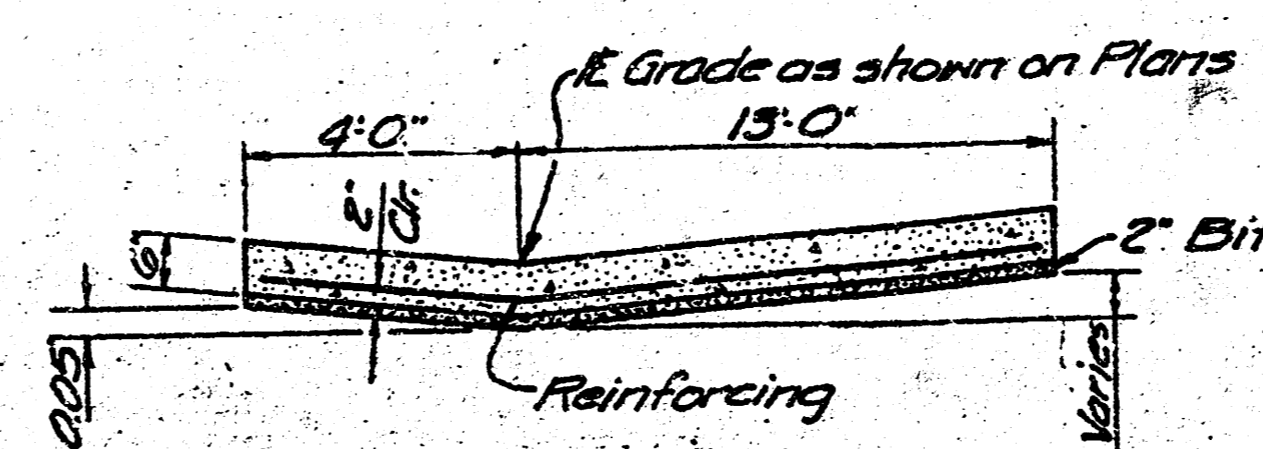
STANDARD INTEGRAL CURB DETAIL

BAR LIST (Valley Gutter)		
Quantity	Length	Shape
2	24'-0"	
6	6'-0"	
1	44'-6"	
1	73'-0"	
2	2'-0"	
2	5'-0"	
2	9'-6"	
2	24'-0"	
2	14'-0"	
2	16'-0"	

All bars are #6 bars except dowel bars.



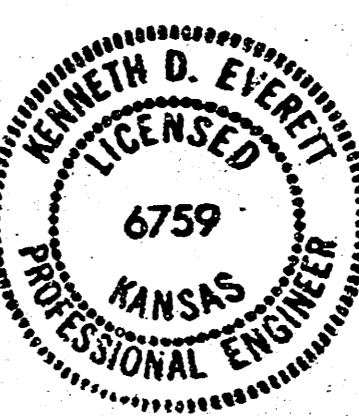
VALLEY GUTTER DETAIL



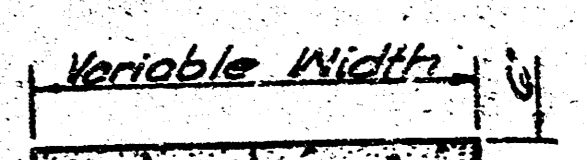
SECTION A-A

APPROVED FOR THE CITY OF WICHITA  
 CONTRACT NO. 42-78  
 HOLD FOR BIDS AND CONTRACT 4-28-78

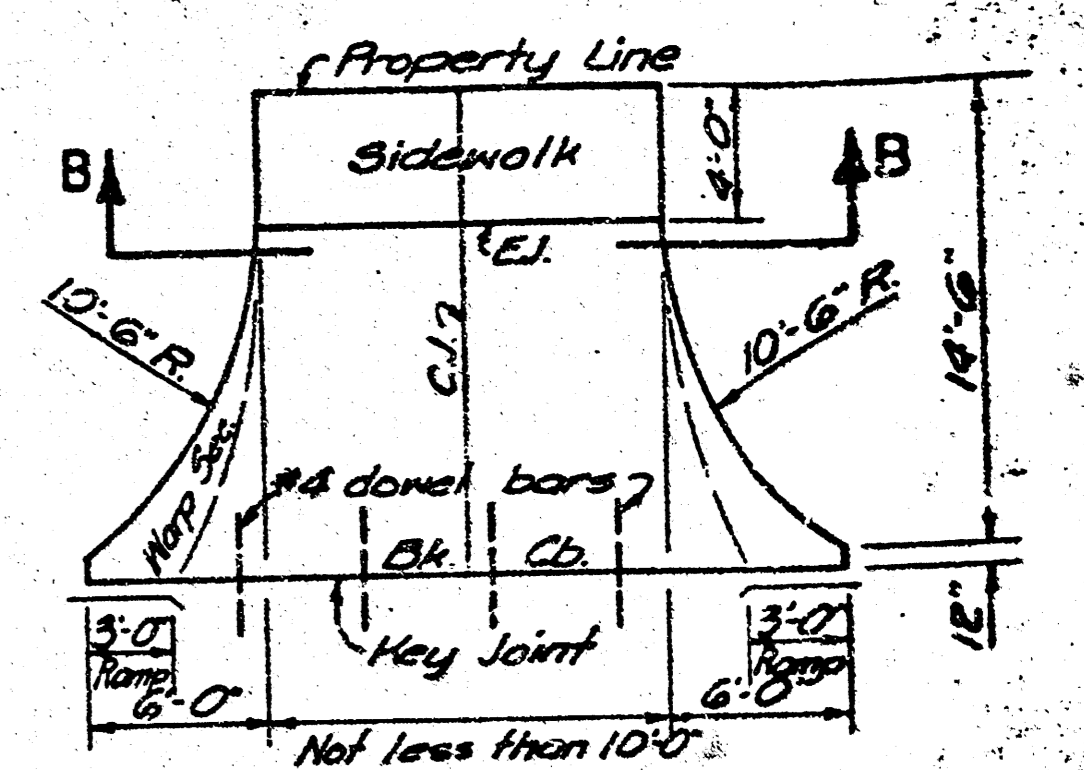
NOTE TO CONTRACTOR  
 This project will be constructed under the supervision of the CITY ENGINEER and conforming to the SPECIFICATIONS of the CITY OF WICHITA. THE CONTRACTOR will reimburse the City of Wichita for all cost of Engineering, Plans, and Inspection.



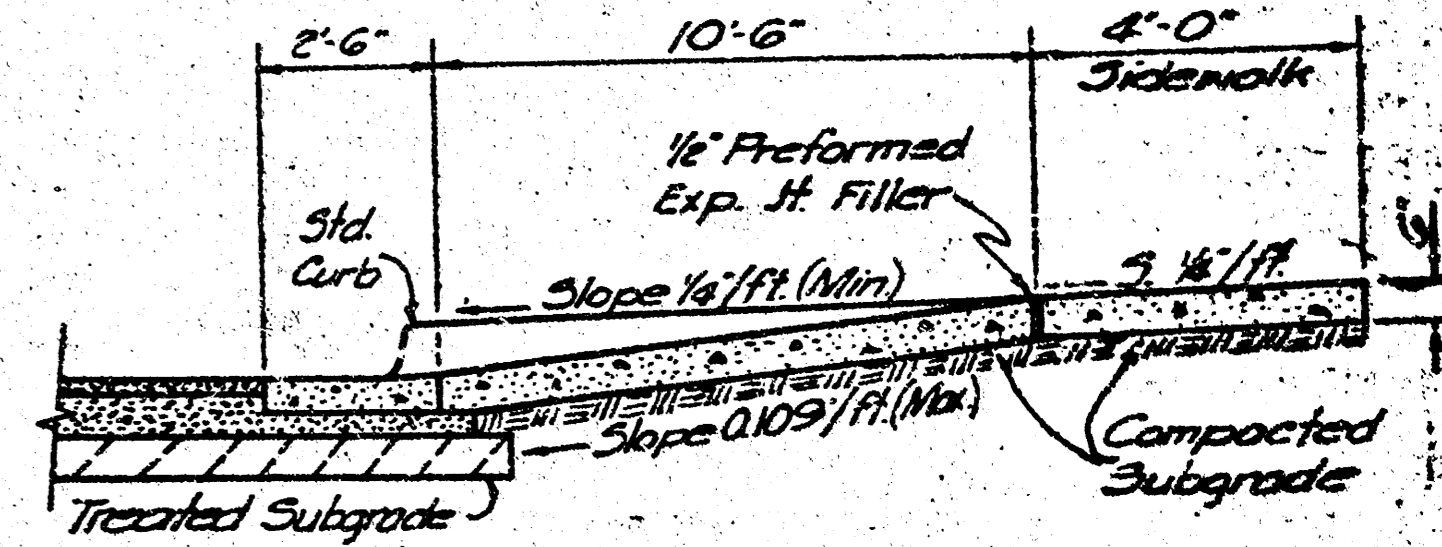
CITY OF WICHITA  
 SEDGWICK COUNTY, KANSAS  
**TIMBROOK**  
**STREET & DRAINAGE IMPROVEMENTS**  
 C of W Project No. 472-75-245-9772-000-000-000  
**PROFESSIONAL ENGINEERING CONSULTANTS, P.A.**  
 ENGINEERS  
 WICHITA, KANSAS  
 Designed by KE  
 Drawn by DD  
 Checked by KE  
 Date 3 Oct. 1978 Job No. 78305



SECTION B-B



DRIVE APPROACH DETAIL

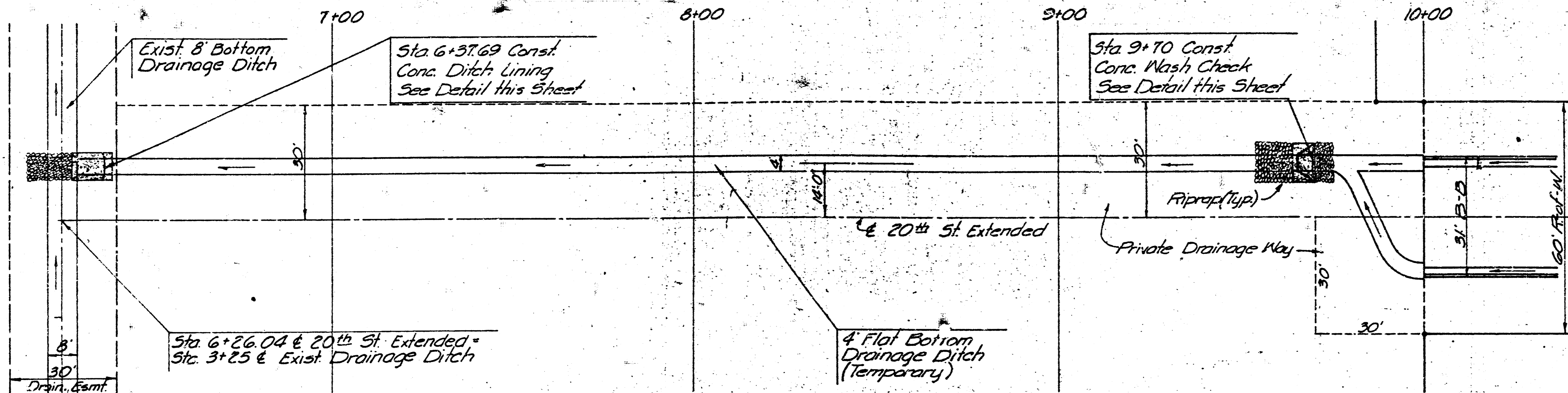


SECTION THRU DRIVE

NOTES

1. A tack coat of emulsified asphalt (55-11) shall be applied at an approx. rate 0.05 Gal. per sq. yd. between lifts of asphalt materials when ordered by the Engineer.
2. Bituminous Base and Asphaltic Concrete Wearing Surface shall be placed with a laydown machine having automatic electronic controls for crown and grade. Construction joints in each lift shall be staggered a minimum distance of 12' with joints in preceding lifts and placed such that a joint will be constructed on the centerline in the top lift.
3. Integral Curbs shall be tied to the pavement base with short deformed dowel bars spaced at 2'-6" intervals. These dowel bars shall be not less than 1/2" or more than 3/4" in diameter.
4. All Construction & Materials to comply with Standard City of Wichita Specifications. Construction is to be inspected by the Dept. of Public Works Inspection.

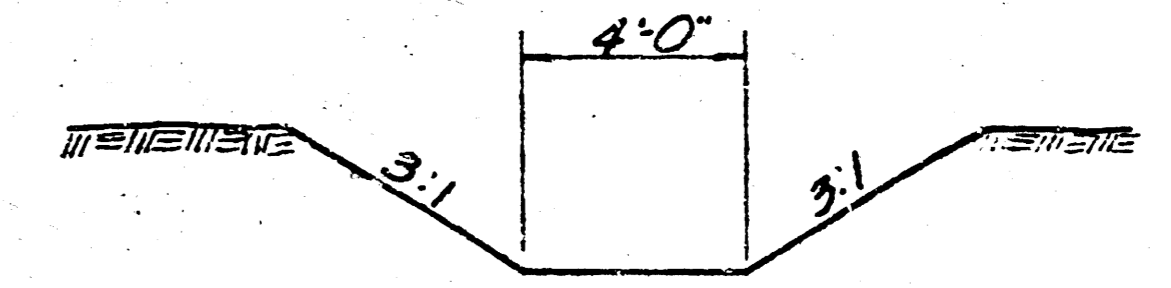
Scale  
1" = 20'



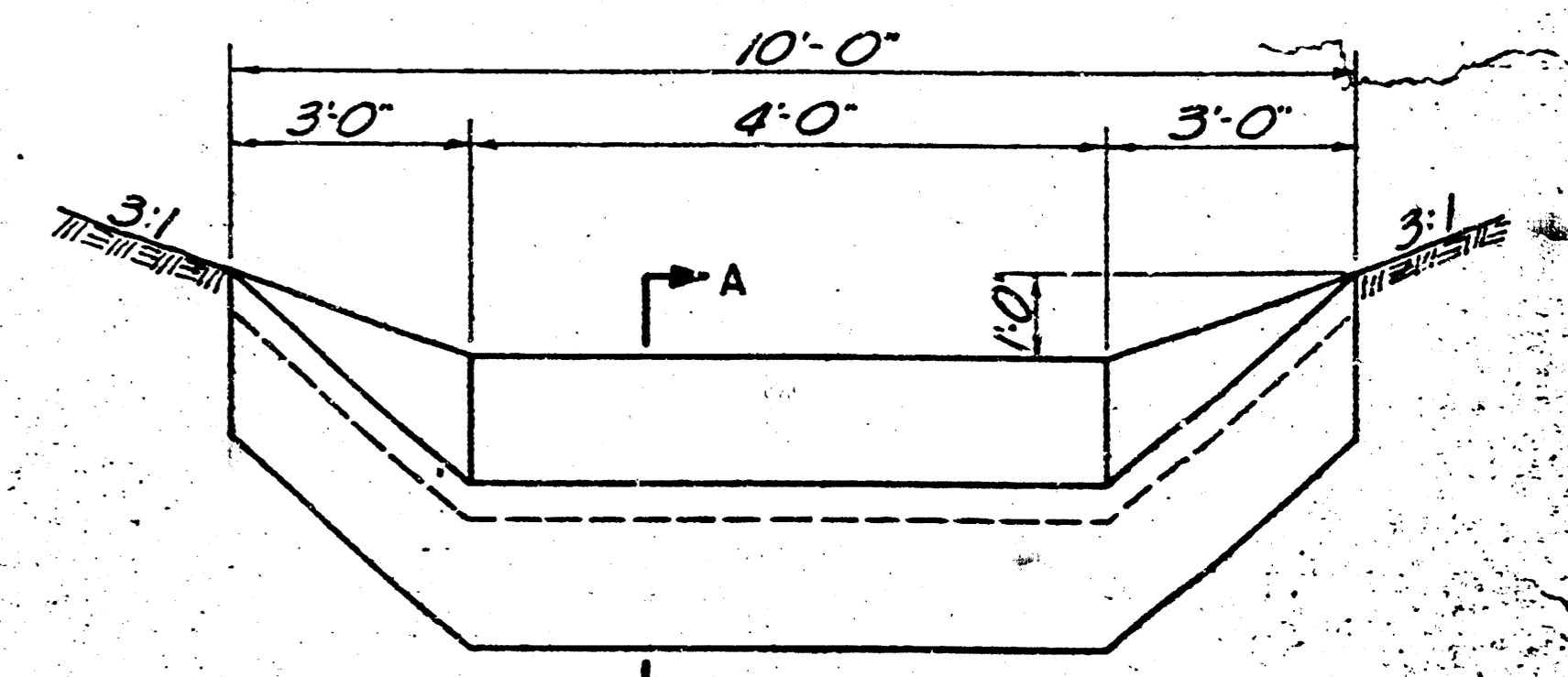
PLAN

B.M. - City of Wichita disc 33' west & 42' north of  
chr. Int. 21st St. & Oliver El. = 217.82

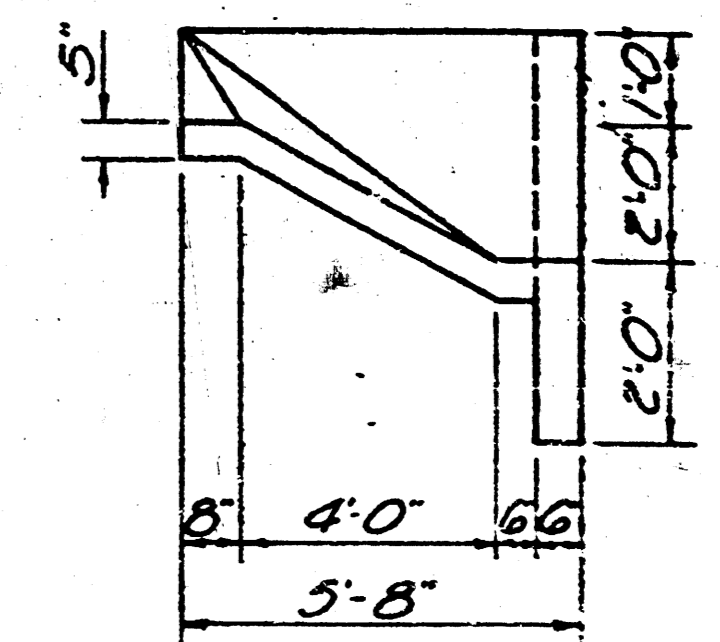
B.M. - Chis. "A" on east end of Curb Return at  
SE. Cor. Int. 20th Street & Old Manor El. = 229.25



TYPICAL SECTION DRAINAGE DITCH

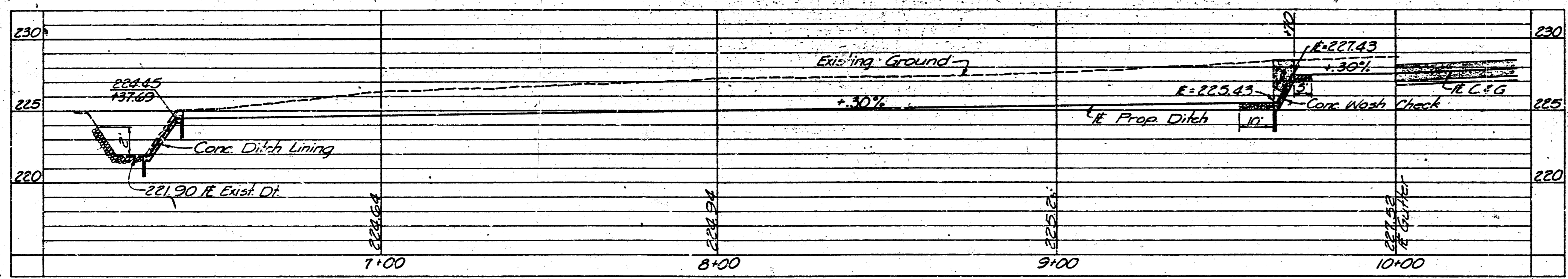


ELEVATION



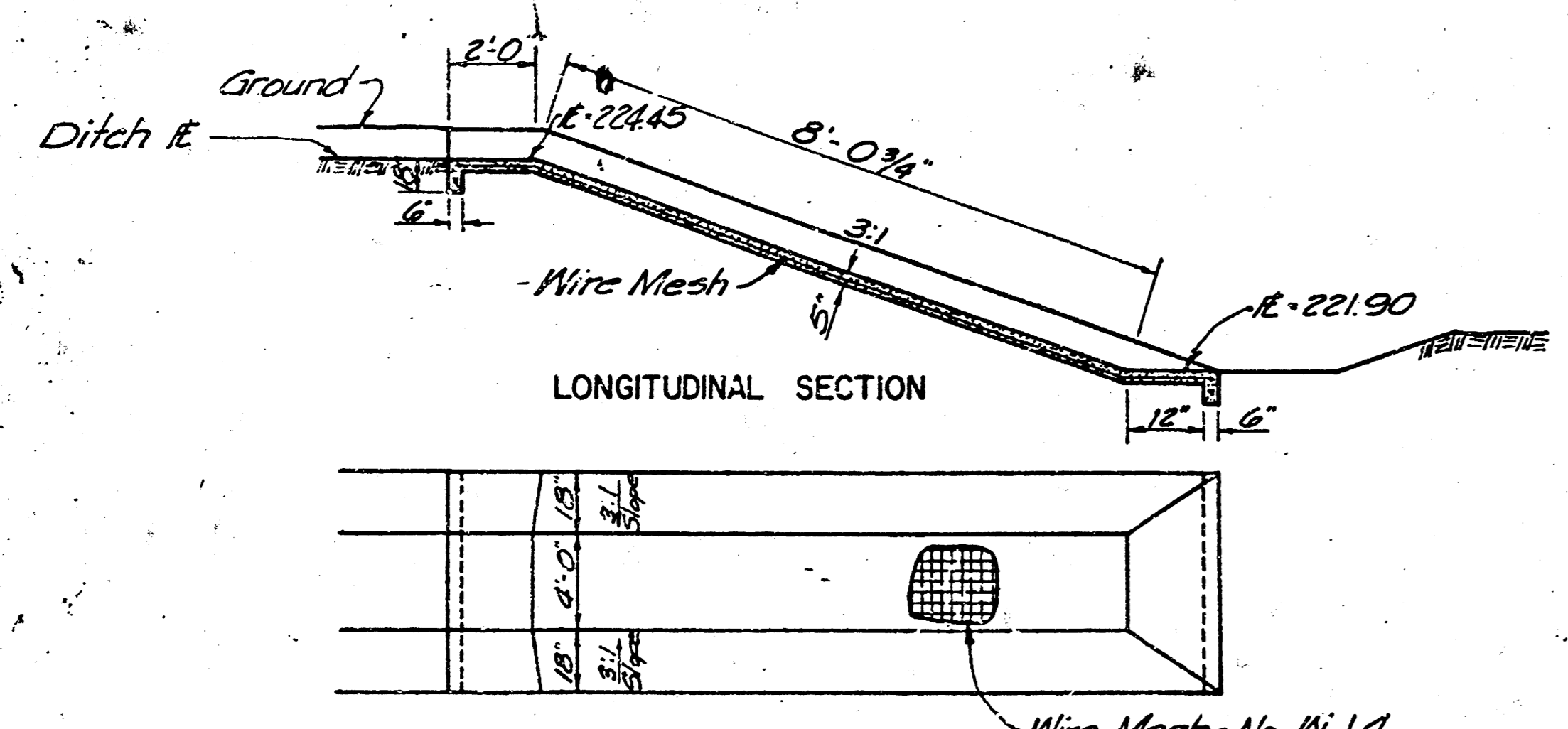
SECTION A-A

CONCRETE WASH CHECK DETAILS

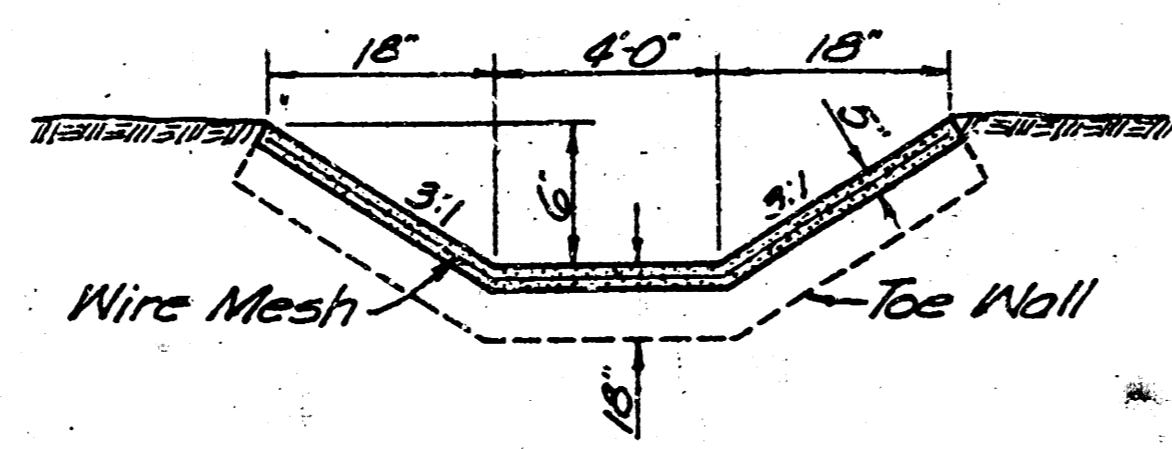


PROFILE

Note: Riprap to be broken concrete  
placed 12" thick with all  
protruding steel removed.



LONGITUDINAL SECTION



CROSS SECTION

CONCRETE DITCH LINING DETAILS

PLAN



CITY OF WICHITA  
SEDGWICK COUNTY, KANSAS

**TIMBROOK**  
STREET & DRAINAGE IMPROVEMENTS

C of W Project No. 472-76-245-8072-000-000-000

**PROFESSIONAL ENGINEERING CONSULTANTS, P.A.**  
ENGINEERS  
WICHITA, KANSAS

Designed by *KE* Checked by *KE*  
Drawn by *DD* Date *Sept. 1978* Job No. *18303*

Sheet 2 of 2