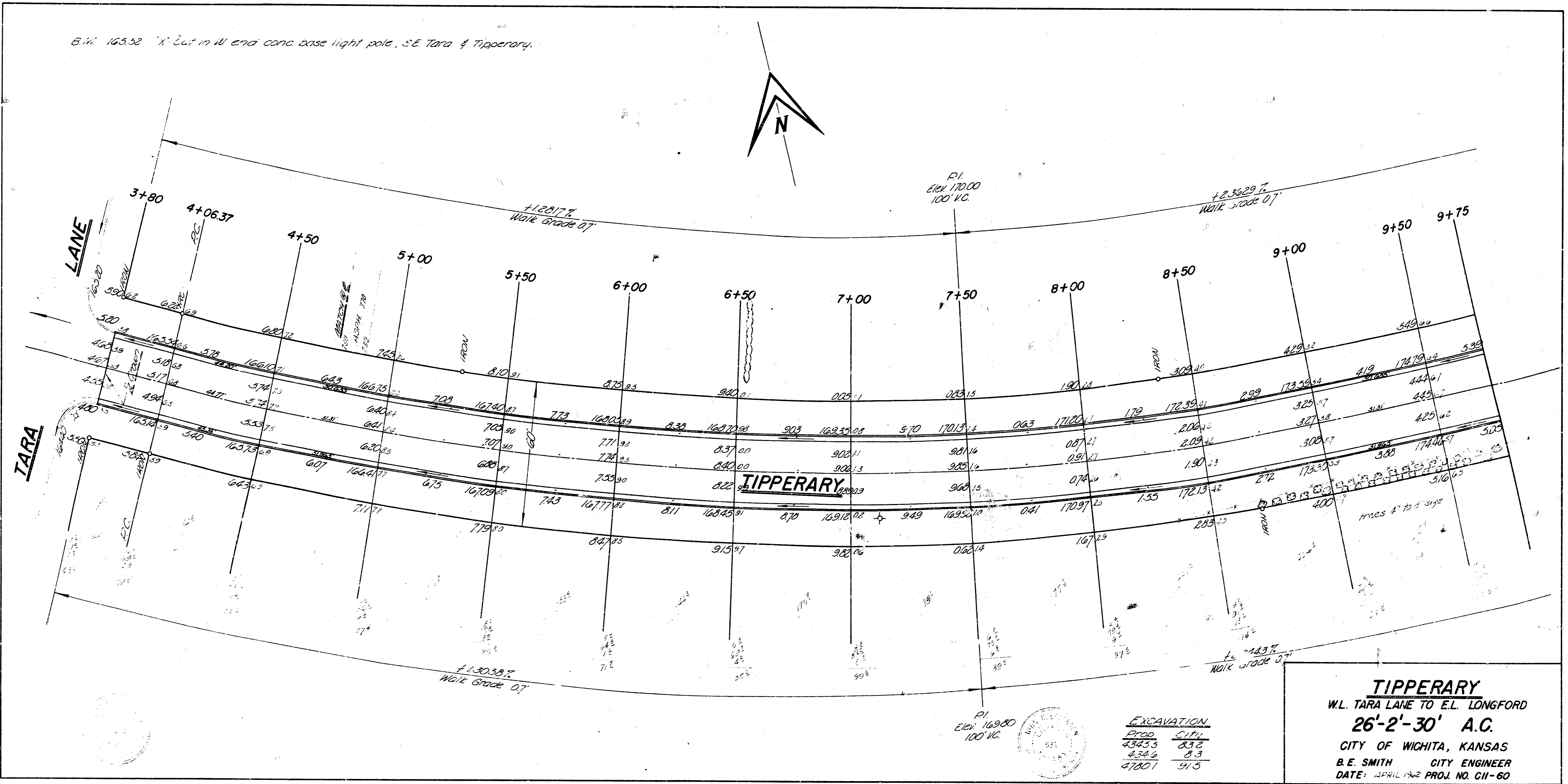
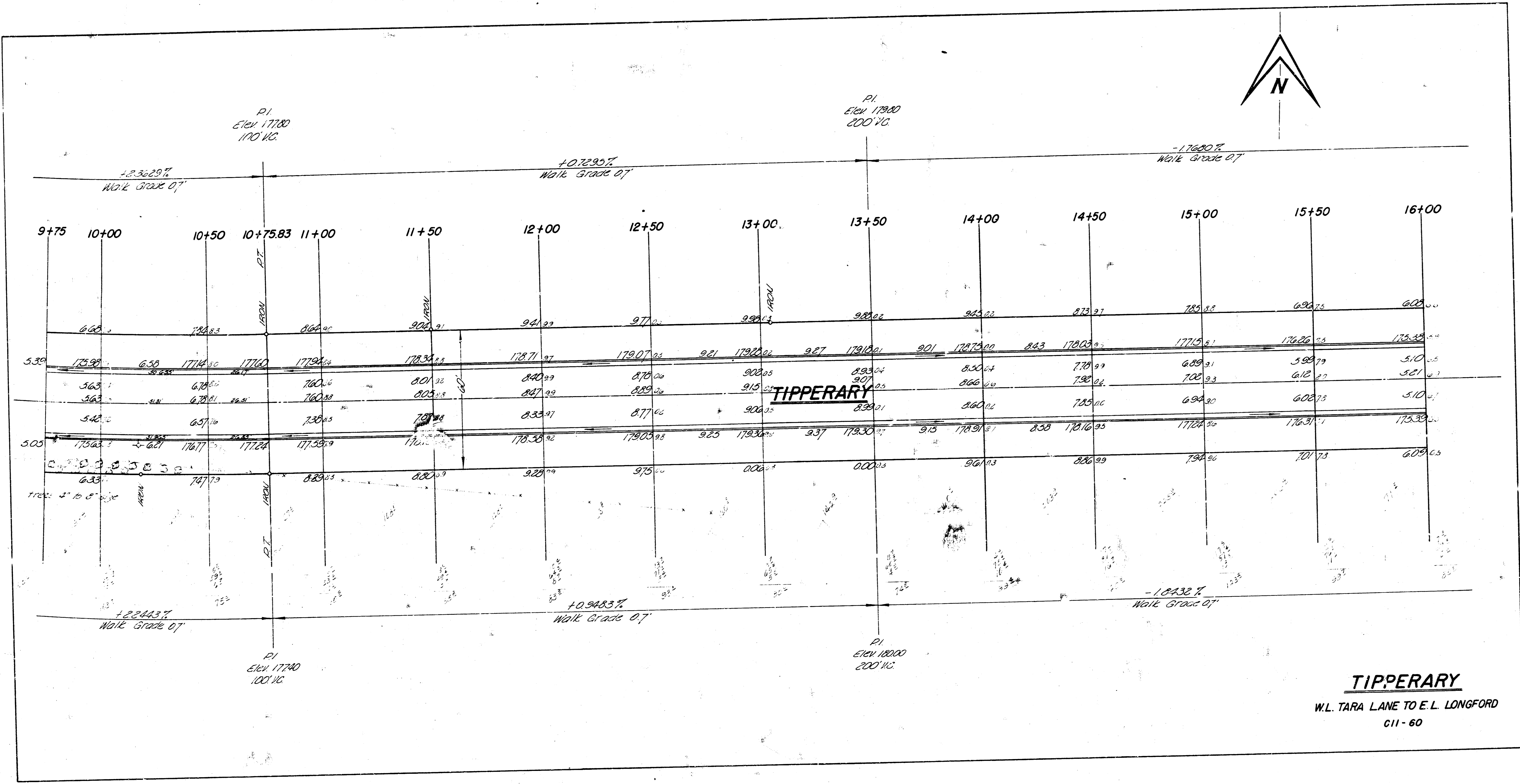
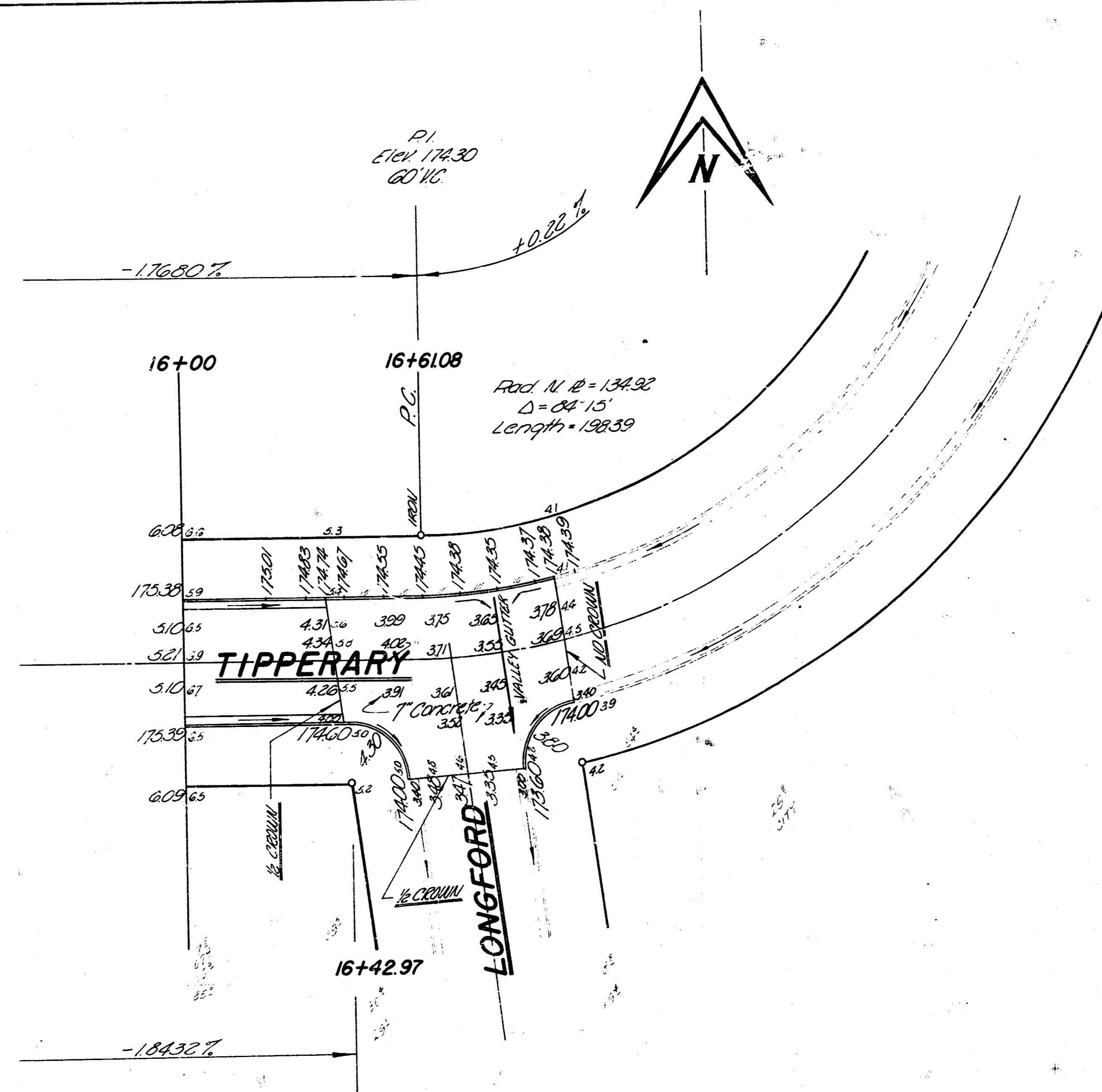


6. W. 163.32' X 26' in W end conc base light pole, S.E. Tara & Tipperary.





**TIPPERARY**  
W.L. TARA LANE TO E.L. LONGFORD  
C11-60



**CURVE DATA**

Radius of  $R = 114.5$   $\Delta = 33.30'$   
 Length = 669.56 Min. Per 141.3021

Sta.	Area	N. #	Dist. from Sta.	Dist.	E. Dist.
4106.37					
4125	1863	1863	1873	1948	0° 27' 38"
4130	2500	24.99	23.145	26.15	0° 37' 31.8"
4175					1° 43' 02"
4180					2° 20' 33"
4185					2° 58' 23"
4190					3° 35' 37"
4195					4° 13' 08"
4200					4° 50' 41"
4205					5° 28' 15"
4210					6° 05' 48"
4215					6° 43' 16"
4220					7° 20' 48"
4225					7° 58' 20"
4230					8° 35' 52"
4235					9° 13' 23"
4240					9° 50' 35"
4245					10° 28' 27"
4250					11° 05' 35"
4255					11° 43' 31"
4260					12° 21' 23"
4265					12° 59' 34"
4270					13° 36' 26"
4275					14° 13' 38"
4280					14° 51' 10"
4285					15° 28' 42"
4290	2500	24.99	23.145	26.15	0° 37' 31.8"
4295	2583	25.82	25.98	27.02	0° 38' 46.6"

**TIPPERARY**  
 W. L. TARA LANE TO EL. LONGFORD  
 C11 - 60