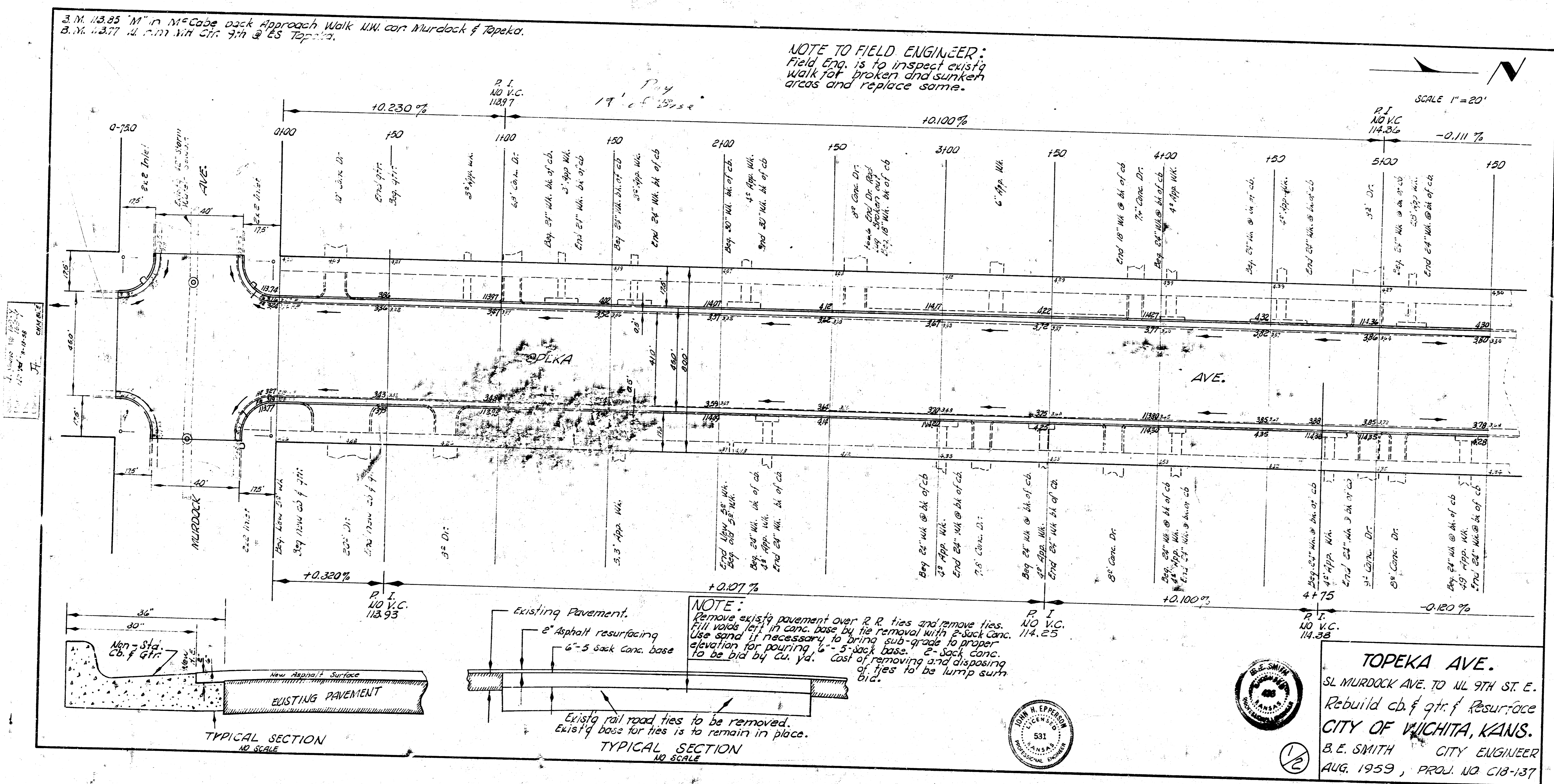


3. M. 113.85 M' in McCabe back Approach Walk W.W. cor. Murdock & Topeka.  
 B.M. 113.77 in 11th St. 7th @ ES Topeka.

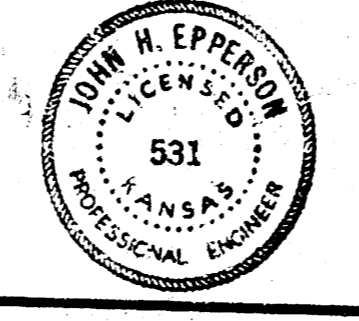
NOTE TO FIELD ENGINEER:  
 Field Eng. is to inspect existing  
 walk for broken and sunken  
 areas and replace same.

SCALE 1" = 20'



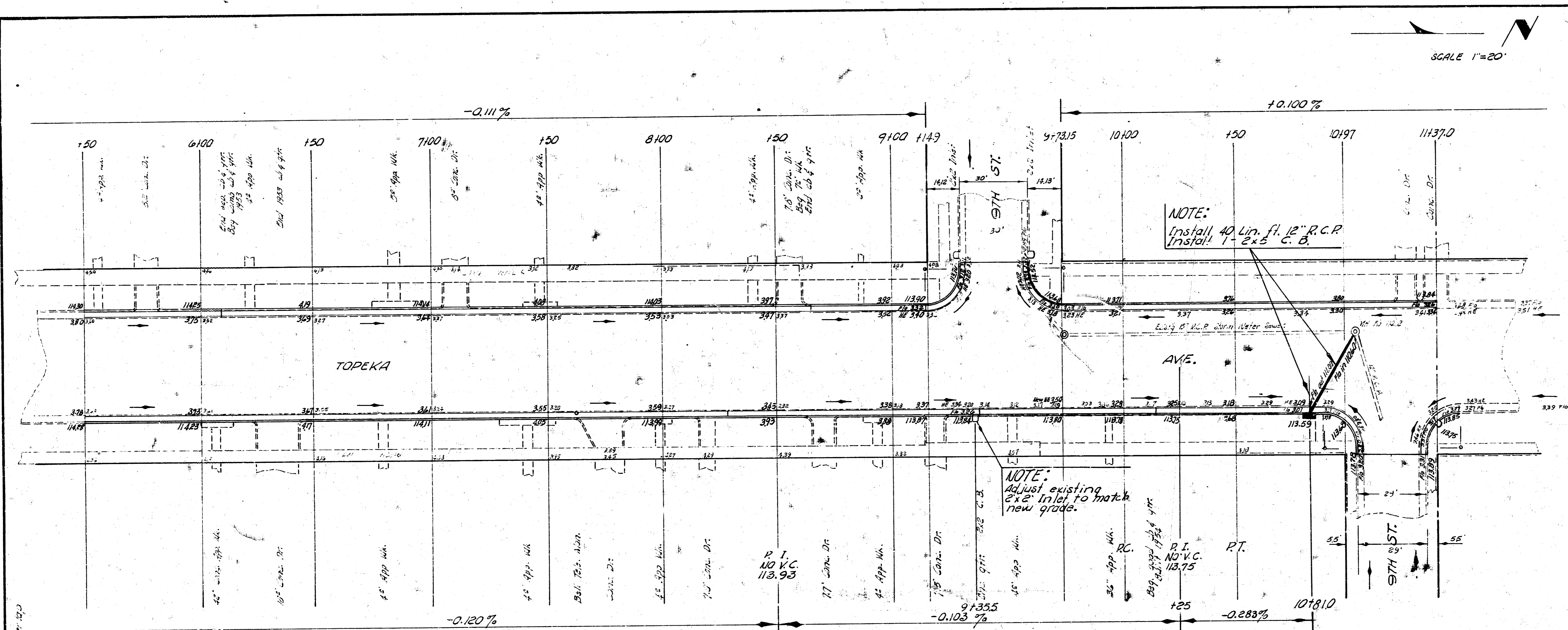
NOTE:  
 Remove existing pavement over R.R. ties and remove ties.  
 Fill voids left in conc. base by the removal with 2-sack conc.  
 Use sand if necessary to bring sub-grade to proper  
 elevation for pouring 1/2" - 5-sack base. 2-sack conc.  
 to be bid by cu. yd. Cost of removing and disposing  
 of ties to be lump sum bid.

**TOPEKA AVE.**  
 SL MURDOCK AVE. TO 11th ST. E.  
 Rebuild cb. & gr. & Resurface  
**CITY OF WICHITA, KANS.**  
 B. E. SMITH CITY ENGINEER  
 AUG. 1959, PROJ. NO. C18-137



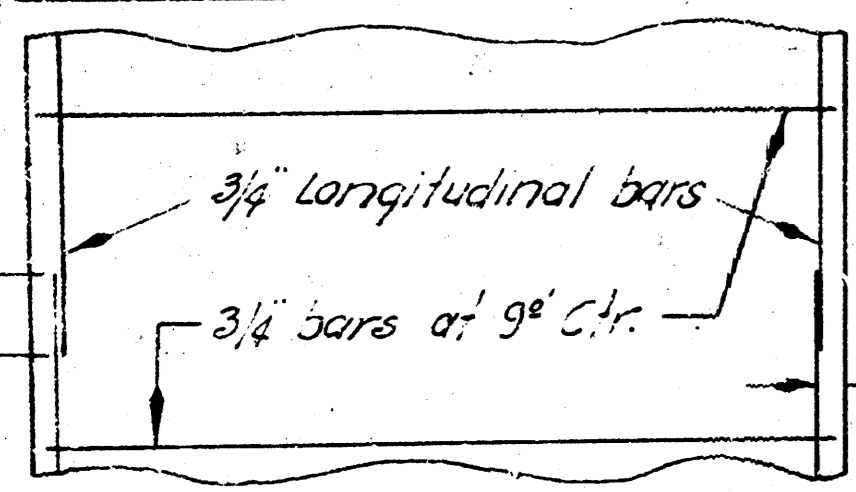
1/2

SCALE 1"=20'



NOTE:  
Excavation behind curb for forms to be bid as lin. ft. of hand excavation. Any other excavation required on project to be a non-pay item.  
Active file chains in curb are to be reset in new curb. Cost to be incidental to project.

It may be necessary to remove some old surface along high edges to obtain proper thickness for resurfacing. Surface removed to be bid by square yard.



STEEL PATTERN  
NO SCALE

2/2

10 1 3 (1)