

Street Improvements For  
**TOWNE PARC                      ADDITION**  
**PHASE 2**

CESSNA: From the E.L. Lot 3, Block 3 to 30' E. of the E.L. Lot 9, Block 3

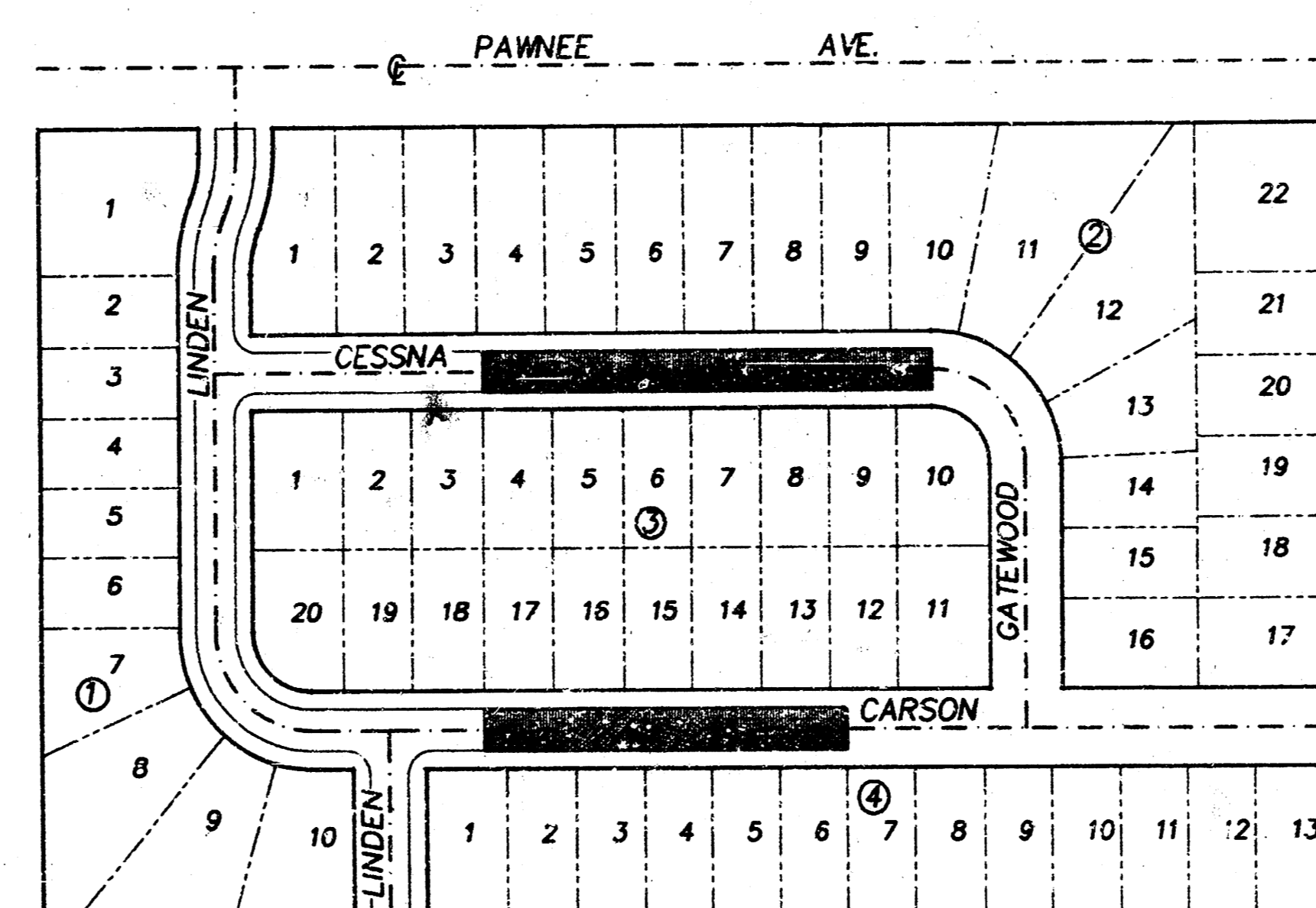
CARSON: From the E.L. Lot 18, Block 3 to the E.L. Lot 6, Block 4

Private Project Number  
**064PPP (607879)**

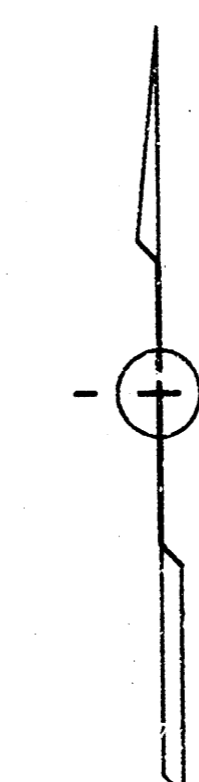
CITY OF WICHITA, KANSAS  
 Michael E. Lindebak      City Engineer

General Notes

1. Utility service lines, poles, valve boxes, meters and et cetera are to be adjusted as necessary by others prior to construction unless the plans specifically call for their adjustment by the Contractor or unless the plans specifically identify the utility to be adjusted by its owner during construction. Existing utilities and their location, as shown on the plans, represent the best information obtainable for design. The contractor will be required to work around existing utilities within the right-of-way which do not conflict with proposed construction.
2. This project includes a certain amount of roll-type curb construction. Roll curbs shall be depressed through all driveway openings when such drives are constructed as a part of the project.
3. The contractor shall be responsible for preserving property irons. The contractor will be required to re-establish any property irons which are damaged or destroyed by his construction operations. Such irons shall be re-established by a licensed land surveyor in accordance with state laws.



■ Project Area



SCALE: 1" = 150'

BENCH MARKS:

Standard City Disk, 2 Feet East and 48 Feet South of the N.W. Corner, N.E. Quarter, Section 5-8-2E Elevation 192.20, City Datum.

"□" Cut in Top of Curb on South Side of Carson and West R/W of Linden. Elevation 201.71 City Datum.

Sheet Index

- 1 Title Sheet
- 2 Typical Section
- 3-4 Plan
- 5 Drainage Plan

APPROVED AS NOTED  
 BY CITY ENGINEER OF WICHITA

Sanitary Sewers \_\_\_\_\_

Storm Sewers \_\_\_\_\_

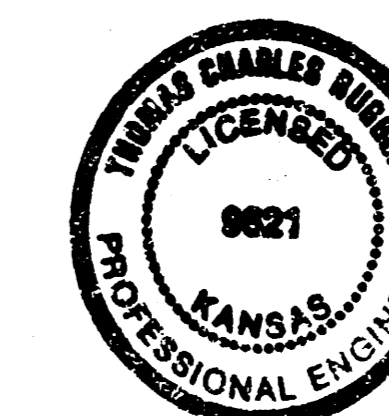
Driveway Approaches \_\_\_\_\_

Water Mains \_\_\_\_\_

Paving VRH 7/10/91

NOTE TO CONTRACTORS

Inspection and testing for this project is to be provided by a Licensed Consulting Engineering Firm under contract with the Owner/Developer. Said inspection to be in accordance with the City of Wichita standard construction engineering practices and certified by a Licensed Professional Engineer. No work shall be performed in dedicated easements or public right-of-way by the Contractor without such inspection nor shall any work be commenced without written authorization by the City Engineer.



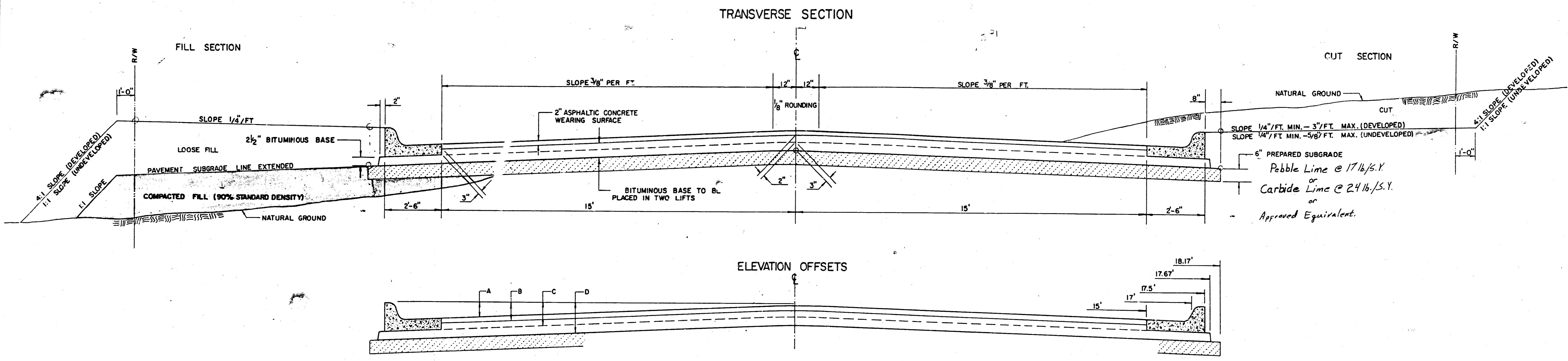
Revised as built 9-13-91

**BAUGHMAN COMPANY P. A.**  
 ENGINEERING & SURVEYING  
 316/252-7271 • 315 ELLIS • WICHITA, KANSAS 67211

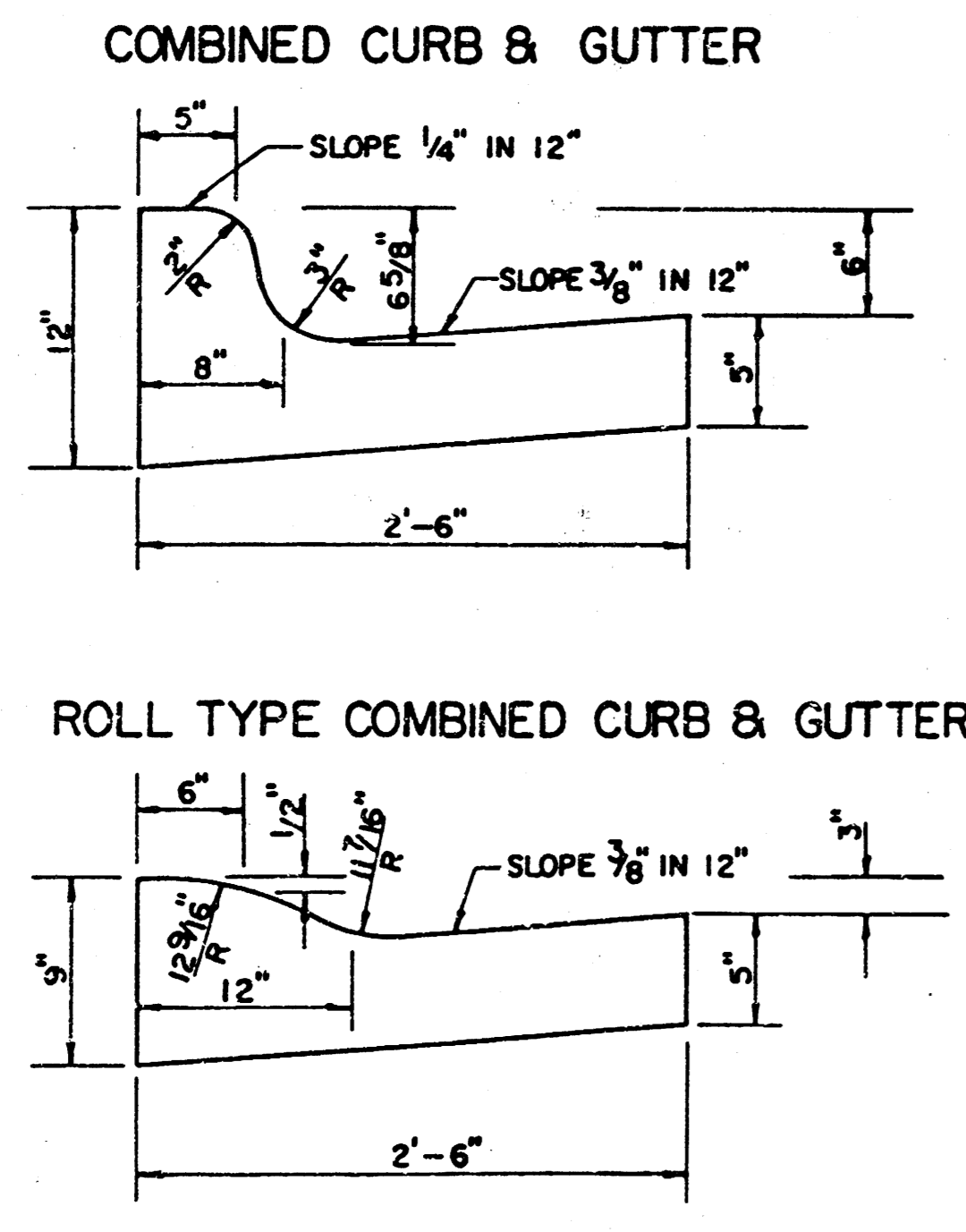
July 3, 1991

FILMED FROM THE BEST AVAILABLE COPY...

# TYPICAL 35' PAVEMENT DETAILS



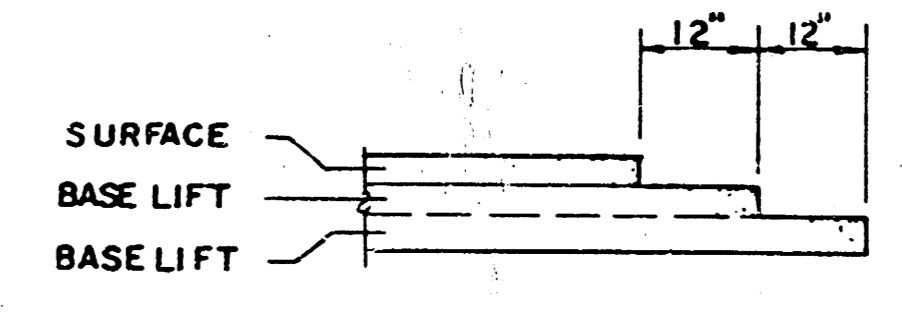
	DISTANCE FROM CENTERLINE (LT. & RT.)												
	0'	2'	4'	6'	8.5'	10'	12'	14'	15'	17'	17.5'	17.67'	18.17'
A: TOP OF CURBS TO TOP OF SURFACE LIFT	0.04	0.08	0.14	0.21	0.29	0.33	0.39	0.46	0.49	—	—	—	—
B: TOP OF CURBS TO TOP OF UPPER BASE LIFT	0.21	0.25	0.31	0.37	0.45	0.50	0.56	0.62	0.65	—	—	—	—
C: TOP OF CURBS TO TOP OF LOWER BASE LIFT	0.37	0.43	0.50	0.57	0.67	0.72	0.79	0.87	0.90	0.98	1.00	1.00	—
D: TOP OF CURBS TO TOP OF SUBGRADE	0.62	0.67	0.74	0.81	0.90	0.95	1.02	1.08	1.12	1.19	1.21	1.21	1.23



### GENERAL NOTES

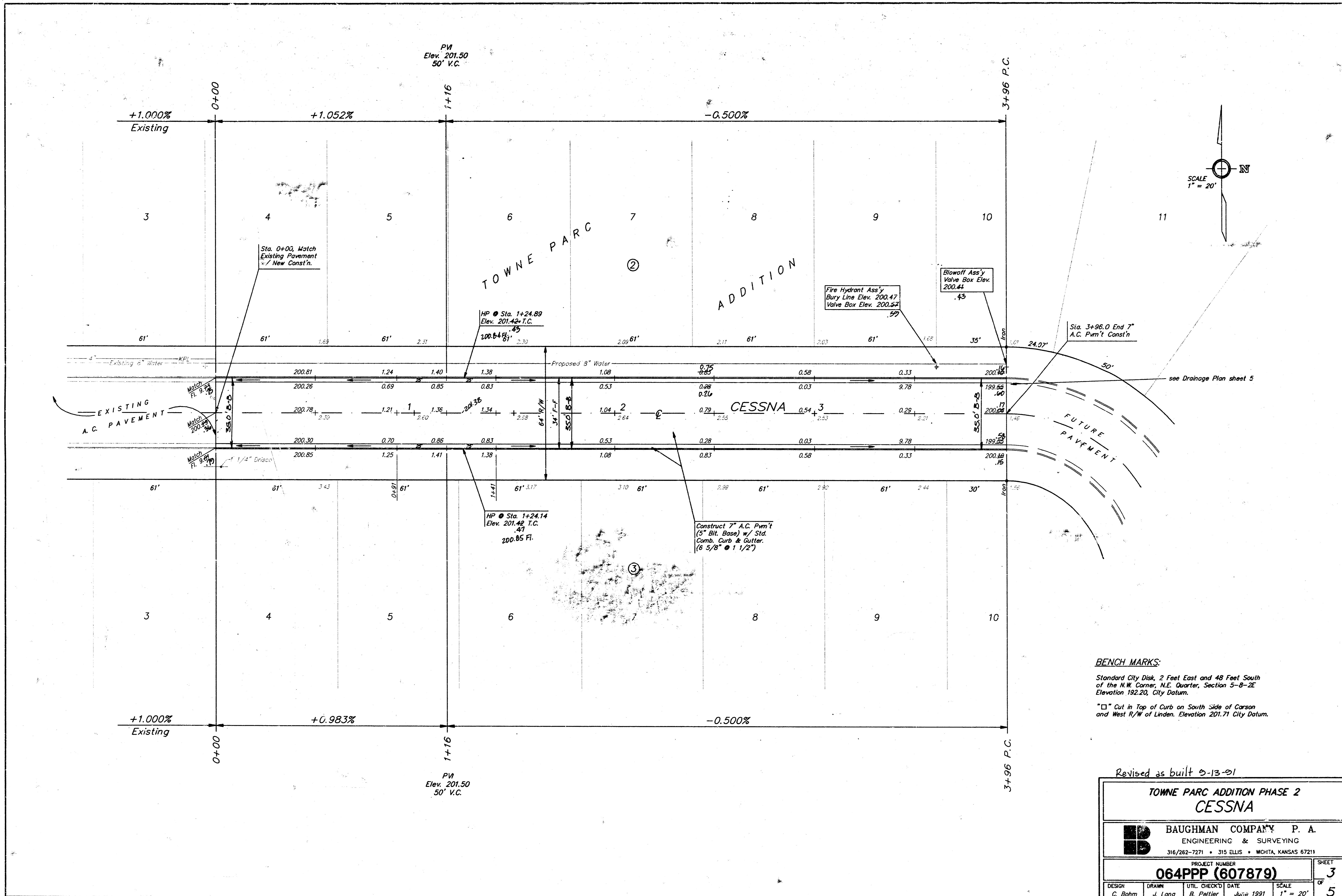
- 1) THE ASPHALTIC CONCRETE PAVEMENT BETWEEN THE COMBINED CURB AND GUTTER SHALL BE PAID AS SQUARE YARDS OF 7" ASPHALTIC CONCRETE (5" BITUMINOUS BASE).
- 2) THE BITUMINOUS BASE UNDER AND BEHIND THE COMBINED CURB AND GUTTER SHALL BE PAID AS SQUARE YARDS OF 2 1/2" BITUMINOUS BASE.
- 3) A TACK COAT OF EMULSIFIED ASPHALT (SC-1H OR CSS-1H) SHALL BE APPLIED AT AN APPROXIMATE RATE OF 0.05 GALLONS PER SQUARE YARD BETWEEN EACH LIFT OF ASPHALTIC MATERIAL.
- 4) BITUMINOUS BASE AND ASPHALTIC CONCRETE WEARING SURFACE SHALL BE PLACED WITH A LAYDOWN MACHINE HAVING AUTOMATIC CONTROLS FOR LINE AND GRADE.
- 5) CONSTRUCTION JOINTS IN EACH LIFT SHALL BE STAGGERED A MINIMUM DISTANCE OF ONE (1) FOOT FROM JOINTS IN PRECEDING LIFTS AND PLACED SO THAT A JOINT WILL BE CONSTRUCTED ON THE CENTERLINE OF THE TOP LIFT.
- 6) CONTRACTOR TO BID ONLY ONE SUBGRADE TREATMENT ALTERNATE WHEN ALTERNATES ARE PROVIDED IN THE PROPOSAL AND CONTRACT. THE ALTERNATE CHOSEN BY THE SUCCESSFUL BIDDER SHALL BE USED IN CONSTRUCTING THIS PROJECT.

### TRANSVERSE CONSTRUCTION JOINTS



TRANSVERSE CONSTRUCTION JOINTS SHALL BE CONSTRUCTED IN FLEXIBLE BASE PAVEMENTS AT LOCATIONS WHERE PAVEMENT JOINS EXISTING FLEXIBLE BASE PAVEMENT AS SHOWN BY THE DETAIL. ALL COSTS ASSOCIATED WITH THE CONSTRUCTION OF THE TRANSVERSE JOINT SHALL BE INCLUDED IN THE BID PRICE FOR SQUARE YARDS 7" ASPHALTIC CONCRETE (5" BITUMINOUS BASE).

7 INCH RESIDENTIAL ASPHALTIC CONCRETE PAVEMENT WITH 5 INCH BITUMINOUS BASE  
 CITY OF WICHITA, KANSAS  
 PROJECT NUMBER  
 064PPP (607879)

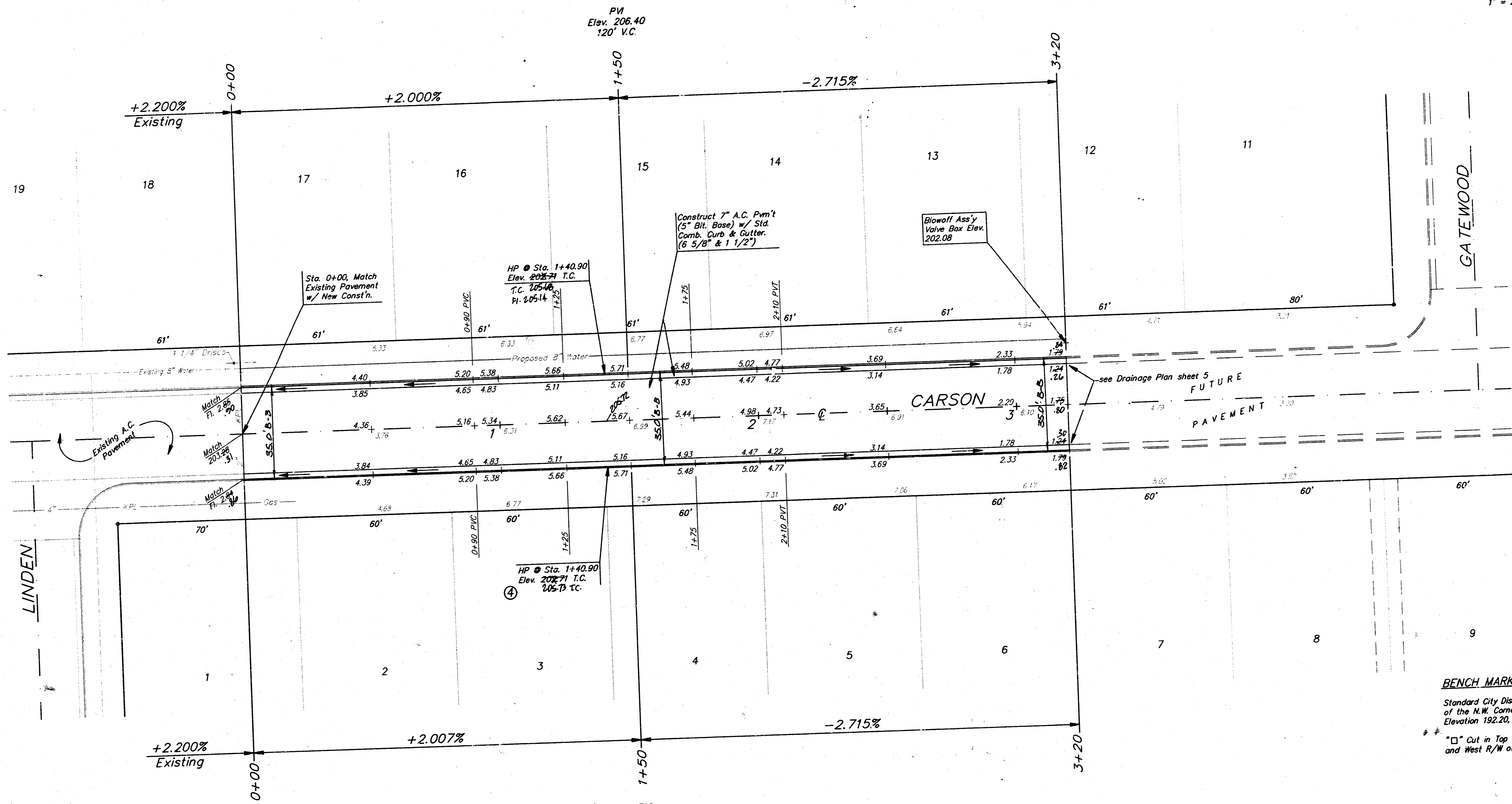
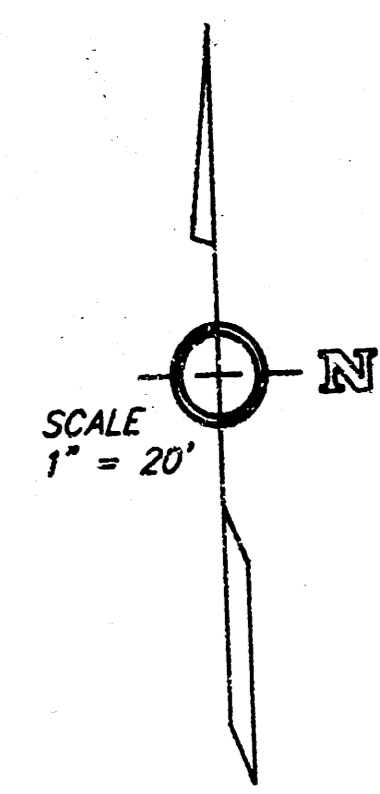


**BENCH MARKS:**  
 Standard City Disk, 2 Feet East and 48 Feet South  
 of the N.W. Corner, N.E. Quarter, Section 5-8-2E  
 Elevation 192.20, City Datum.  
 □ Cut in Top of Curb on South Side of Carsen  
 and West R/W of Linden, Elevation 201.71 City Datum.

Revised as built 5-13-91

<b>TOWNE PARC ADDITION PHASE 2 CESSNA</b>			
<b>BAUGHMAN COMPANY P. A.</b> ENGINEERING & SURVEYING <small>316/262-7271 • 315 ELLIS • WICHITA, KANSAS 67211</small>			
PROJECT NUMBER <b>064PPP (607879)</b>			SHEET <b>3</b> OF <b>5</b>
DESIGN C. Bohm	DRAWN J. Long	UTIL. CHECK'D B. Peltier	DATE June 1991
			SCALE 1" = 20'

**FILMED FROM THE BEST  
AVAILABLE COPY.....**



**BENCH MARKS:**  
 Standard City Disk, 2 Feet East and 48 Feet South  
 of the N.W. Corner, N.E. Quarter, Section 5-B-2E  
 Elevation 192.20, City Datum.  
 \* \* \* "□" Cut in Top of Curb on South Side of Carson  
 and West R/W of Linden. Elevation 201.71 City Datum.

Revised as built 8-13-01

<b>TOWNE PARC ADDITION PHASE 2 CARSON</b>	
<b>BAUGHMAN COMPANY P. A.</b> ENGINEERING & SURVEYING 316/262-7271 • 315 ELLIS • WICHITA, KANSAS 67211	
PROJECT NUMBER <b>064PPP (607879)</b>	
DESIGN C. Bohm	DRAWN J. Long
UTIL. CHECKED B. Peltier	DATE June 1991
SCALE 1" = 20'	
SHEET 4 OF 5	

**FILMED FROM THE BEST  
AVAILABLE COPY**

