

STREET IMPROVEMENTS FOR TOWNE PARC ADDITION

PROJECT NO.
472-76-245-80001-000-000-037

INDEX TO DRAWINGS

- 1 Title Sheet
- 2 35' Pavement Typical Section
- 3 Linden
- 4 Cessna
- 5 Carson

CITY OF WICHITA, KANSAS

MICHAEL E. LINDEBAK CITY ENGINEER

GENERAL NOTES

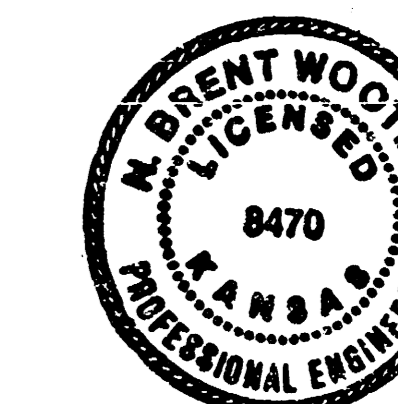
1. Utility service lines, poles, valve boxes, meters, and etcetera are to be adjusted as necessary by others prior to construction unless the plans specifically call for their adjustment by the Contractor or unless the plans specifically identify a utility to be adjusted by its owner during construction. Existing utilities and their location, as shown on the plans, represent the best information obtainable for design. The contractor will be required to work around existing utilities within the right-of-way which do not conflict with proposed construction.
2. The Contractor shall notify pipeline companies at least 48 hours in advance of any work being performed over and/or adjacent to their lines.
3. Limits of earthwork shall match existing ground elevations at the right-of-way line unless otherwise noted on the plans with a new finished grade elevation. When a new finished grade elevation is shown, the earthwork shall extend one foot beyond the right-of-way line and then sloped up or down using permissible slopes to match the existing ground surface.
4. The Contractor shall be responsible for preserving property irons. The Contractor will be required to re-establish any property irons which are damaged or destroyed by his construction operations. Such irons shall be re-established by a licensed land surveyor in accordance with state laws.
5. The Contractor shall use extreme caution when working in the vicinity of the Underground Conoco Gas Line and the Underground Southwestern Bell Fiber Optic Cable.

NOTE TO CONTRACTOR

This project will be constructed under the supervision of the CITY ENGINEER and conforming to the SPECIFICATIONS of the CITY OF WICHITA. The CONTRACTOR will pay the City of Wichita for all costs of plan review, inspection and booking per contract.

APPROVED AS NOTED
By CITY ENGINEER OF WICHITA

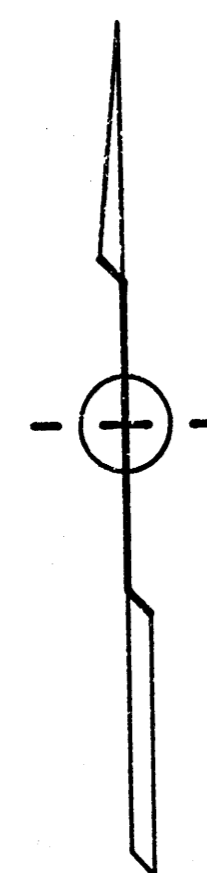
Sanitary Sewers _____
Storm Sewers _____
Driveway Approaches _____
Water Mains _____
Paving VRH 2/3/88



Rev 2/17/88
DATE Feb. 8, 1988

BAUGHMAN COMPANY P. A.
SURVEYING & ENGINEERING
316/262-7271 • 315 ELLIS • WICHITA, KANSAS 67211

SHEET 1
OF 5



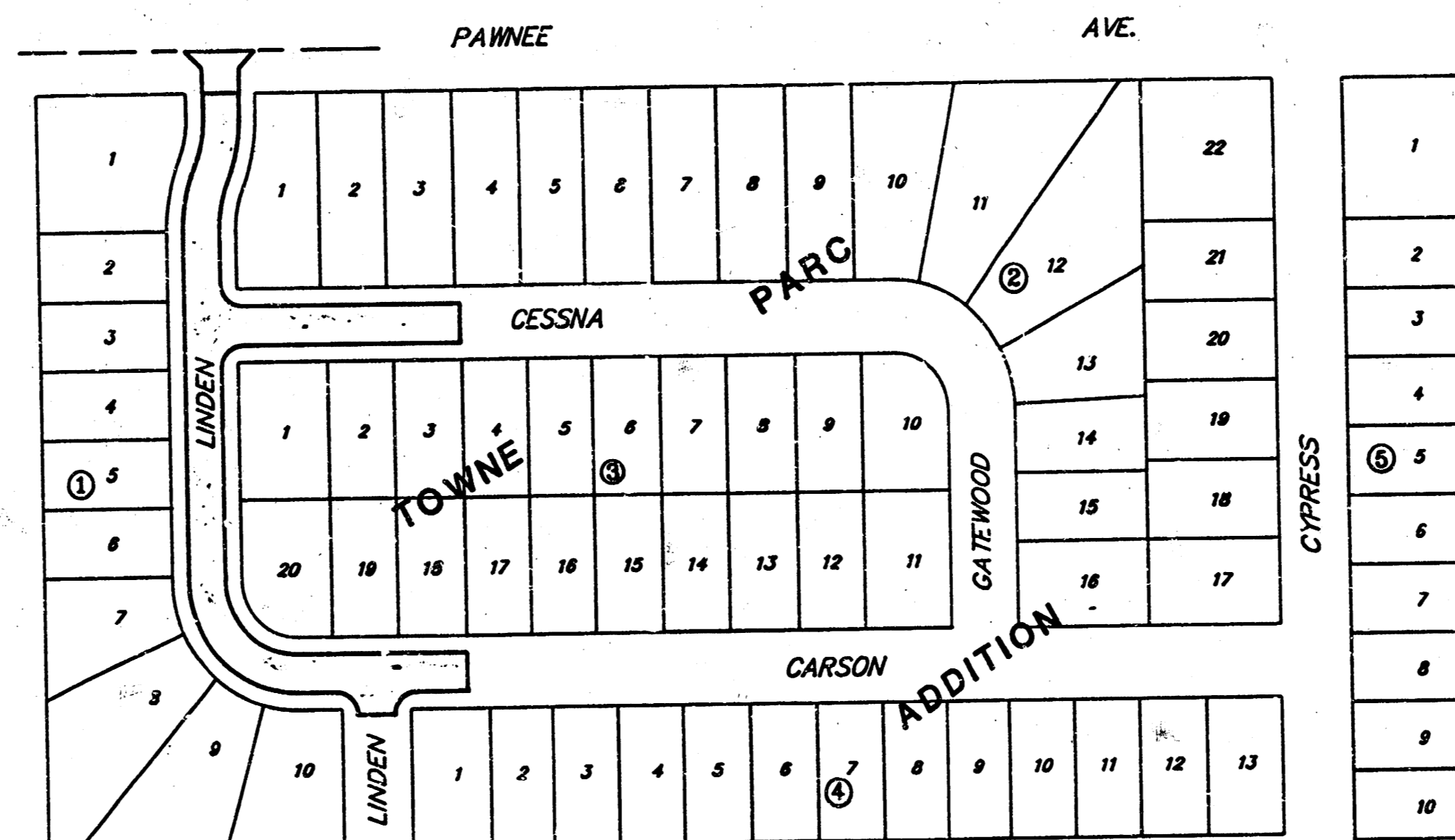
SCALE 1" = 150'

BENCH MARKS

Standard City Disk 2 feet east and 48 feet south of the N.W. Corner, N.E. Quarter, Section 5-28-2E. Elevation = 192.20 City Datum.

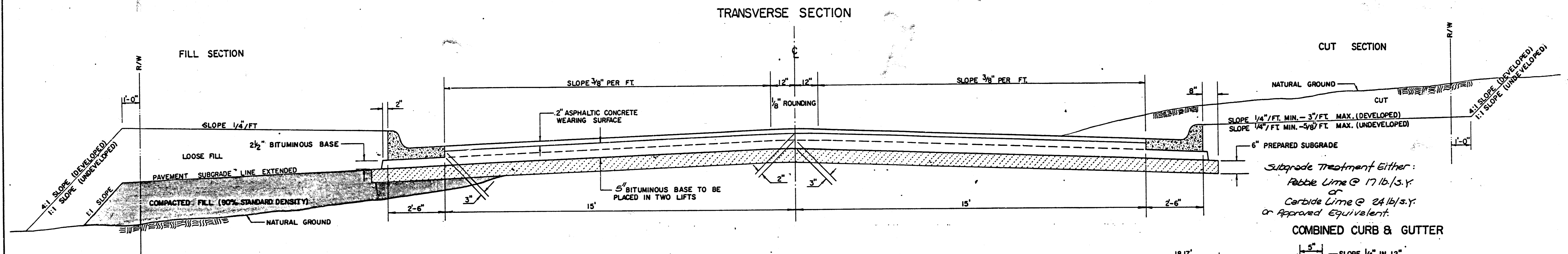
Step Bench in south face of power pole, 491 feet east and 39 feet south of the N.W. Corner, N.E. Quarter, Section 5-28-2E, Elevation = 200.13

LOCATION MAP



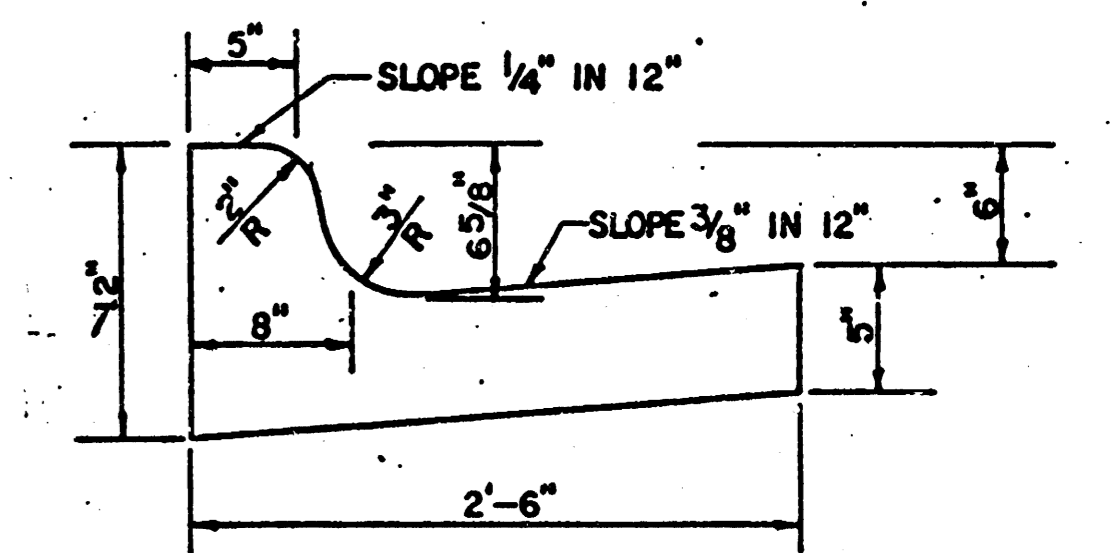
FILMED FROM THE BEST AVAILABLE COPY

TYPICAL 35' PAVEMENT DETAILS

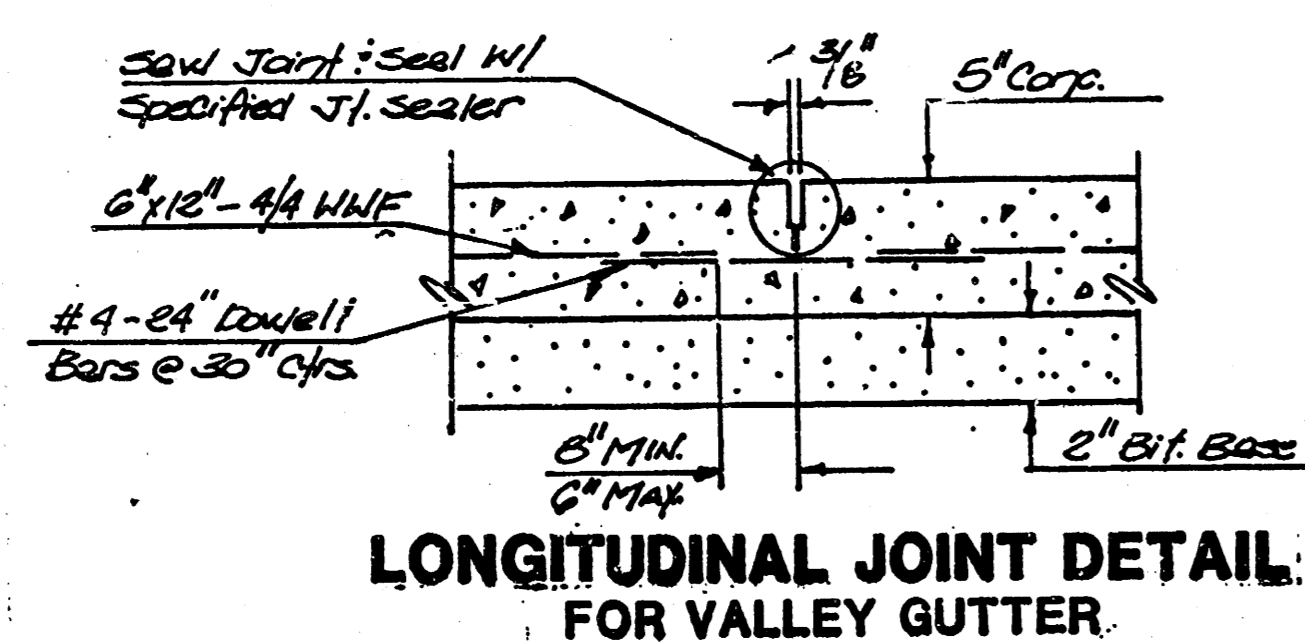
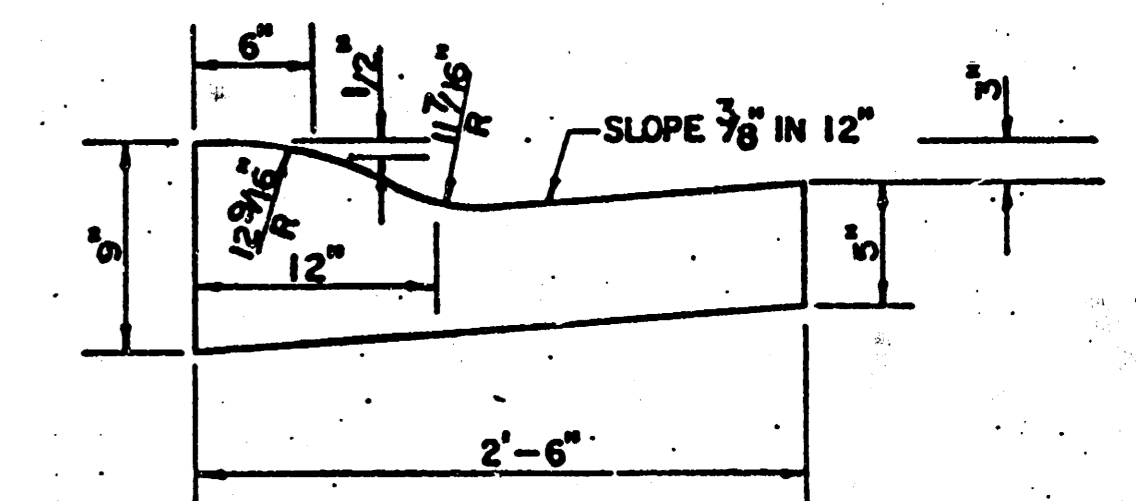


Subgrade Treatment Either:
 Pebble Lime @ 17 lb./s.y.
 Carbide Lime @ 24 lb./s.y.
 or Approved Equivalent.

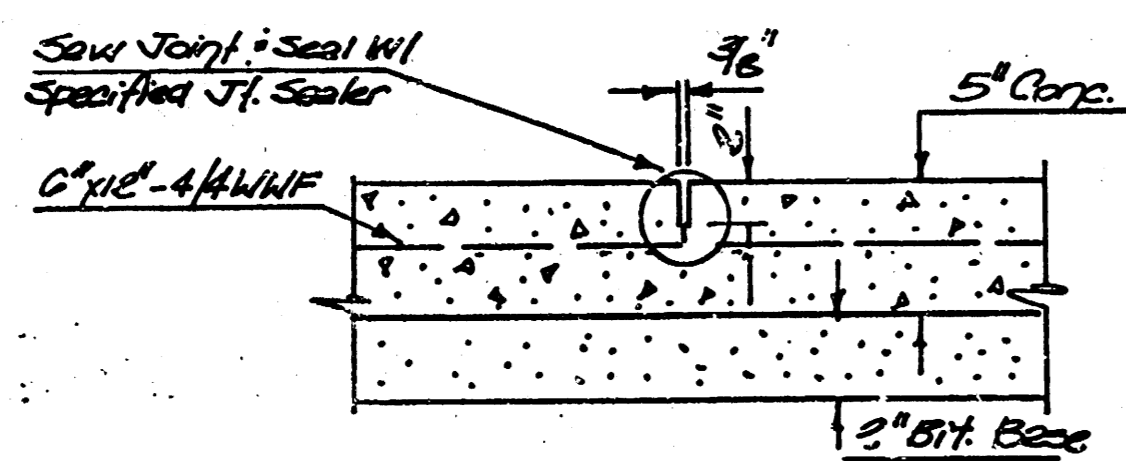
COMBINED CURB & GUTTER



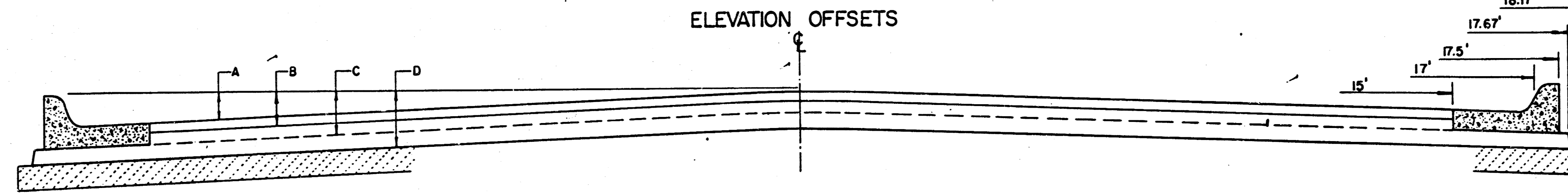
ROLL TYPE COMBINED CURB & GUTTER



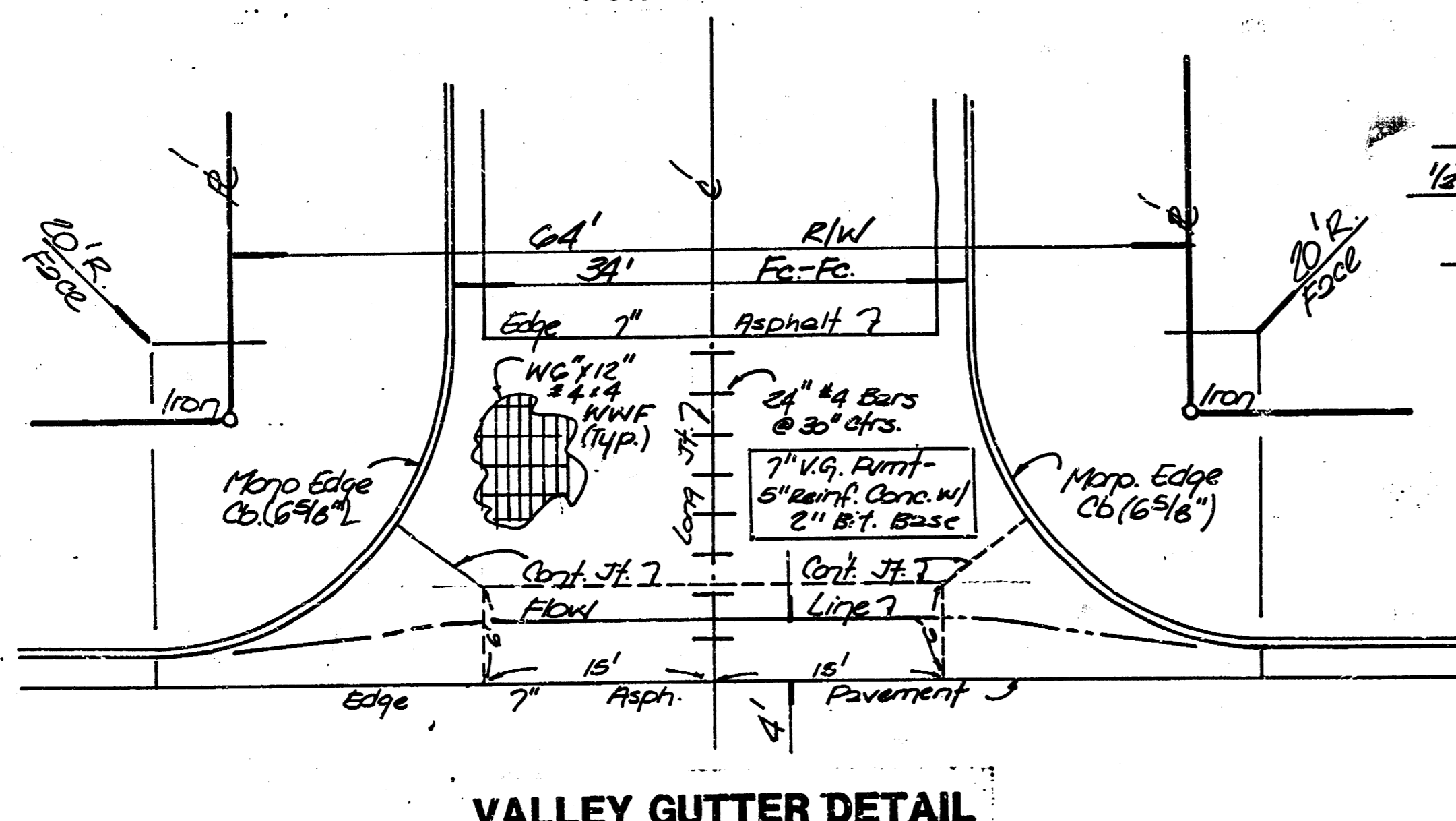
LONGITUDINAL JOINT DETAIL FOR VALLEY GUTTER



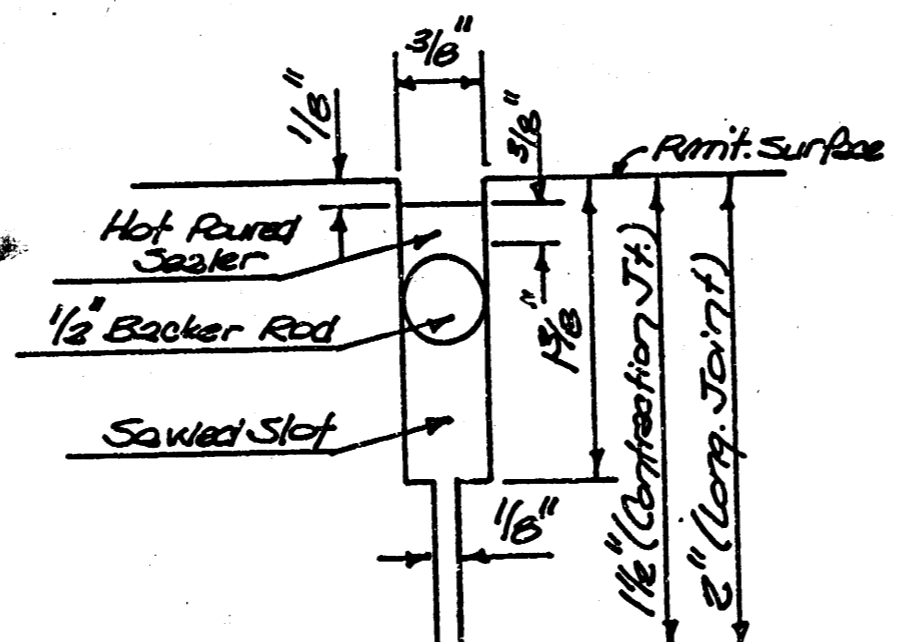
CONTRACTION JOINT DETAIL FOR VALLEY GUTTER



	DISTANCE FROM CENTERLINE (LT. & RT.)												
	0'	2'	4'	6'	8.5'	10'	12'	14'	15'	17'	17.5'	17.67'	18.17'
A: TOP OF CURBS TO TOP OF SURFACE LIFT	0.04	0.08	0.14	0.21	0.29	0.33	0.39	0.46	0.49	—	—	—	—
B: TOP OF CURBS TO TOP OF UPPER BASE LIFT	0.21	0.25	0.31	0.37	0.45	0.50	0.56	0.62	0.65	—	—	—	—
C: TOP OF CURBS TO TOP OF LOWER BASE LIFT	0.37	0.43	0.50	0.57	0.67	0.72	0.79	0.87	0.90	0.98	1.00	1.00	—
D: TOP OF CURBS TO TOP OF SUBGRADE	0.62	0.67	0.74	0.81	0.90	0.95	1.02	1.08	1.12	1.19	1.21	1.21	1.23



VALLEY GUTTER DETAIL



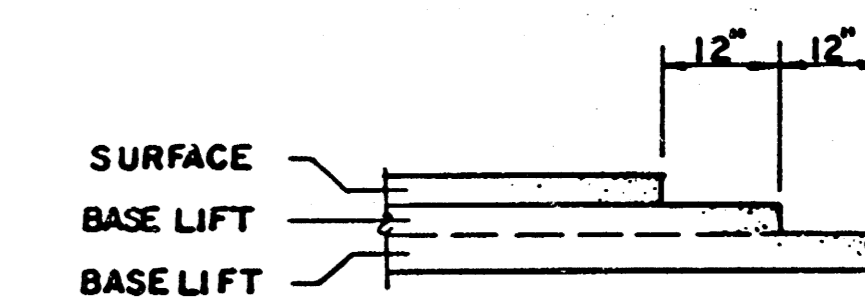
SAW JOINT DETAIL FOR CONT. AND LONG. JOINTS

Note: Sealer Material Shall Conform to ASTM D-3863 or ASTM D-1190

GENERAL NOTES

- 1) THE ASPHALTIC CONCRETE PAVEMENT BETWEEN THE COMBINED CURB AND GUTTER SHALL BE PAID AS SQUARE YARDS OF 7" ASPHALTIC CONCRETE (5" BITUMINOUS BASE).
- 2) THE BITUMINOUS BASE UNDER AND BEHIND THE COMBINED CURB AND GUTTER SHALL BE PAID AS SQUARE YARDS OF 2 1/2" BITUMINOUS BASE.
- 3) A TACK COAT OF EMULSIFIED ASPHALT (SC-1H OR CSS-1H) SHALL BE APPLIED AT AN APPROXIMATE RATE OF 0.05 GALLONS PER SQUARE YARD BETWEEN EACH LIFT OF ASPHALTIC MATERIAL.
- 4) BITUMINOUS BASE AND ASPHALTIC CONCRETE WEARING SURFACE SHALL BE PLACED WITH A LAYDOWN MACHINE HAVING AUTOMATIC CONTROLS FOR LINE AND GRADE.
- 5) CONSTRUCTION JOINTS IN EACH LIFT SHALL BE STAGGERED A MINIMUM DISTANCE OF ONE (1) FOOT FROM JOINTS IN PRECEDING LIFTS AND PLACED SO THAT A JOINT WILL BE CONSTRUCTED ON THE CENTERLINE OF THE TOP LIFT.
- 6) CONTRACTOR TO BID ONLY ONE SUBGRADE TREATMENT ALTERNATE WHEN ALTERNATES ARE PROVIDED IN THE PROPOSAL AND CONTRACT. THE ALTERNATE CHOSEN BY THE SUCCESSFUL BIDDER SHALL BE USED IN CONSTRUCTING THIS PROJECT.

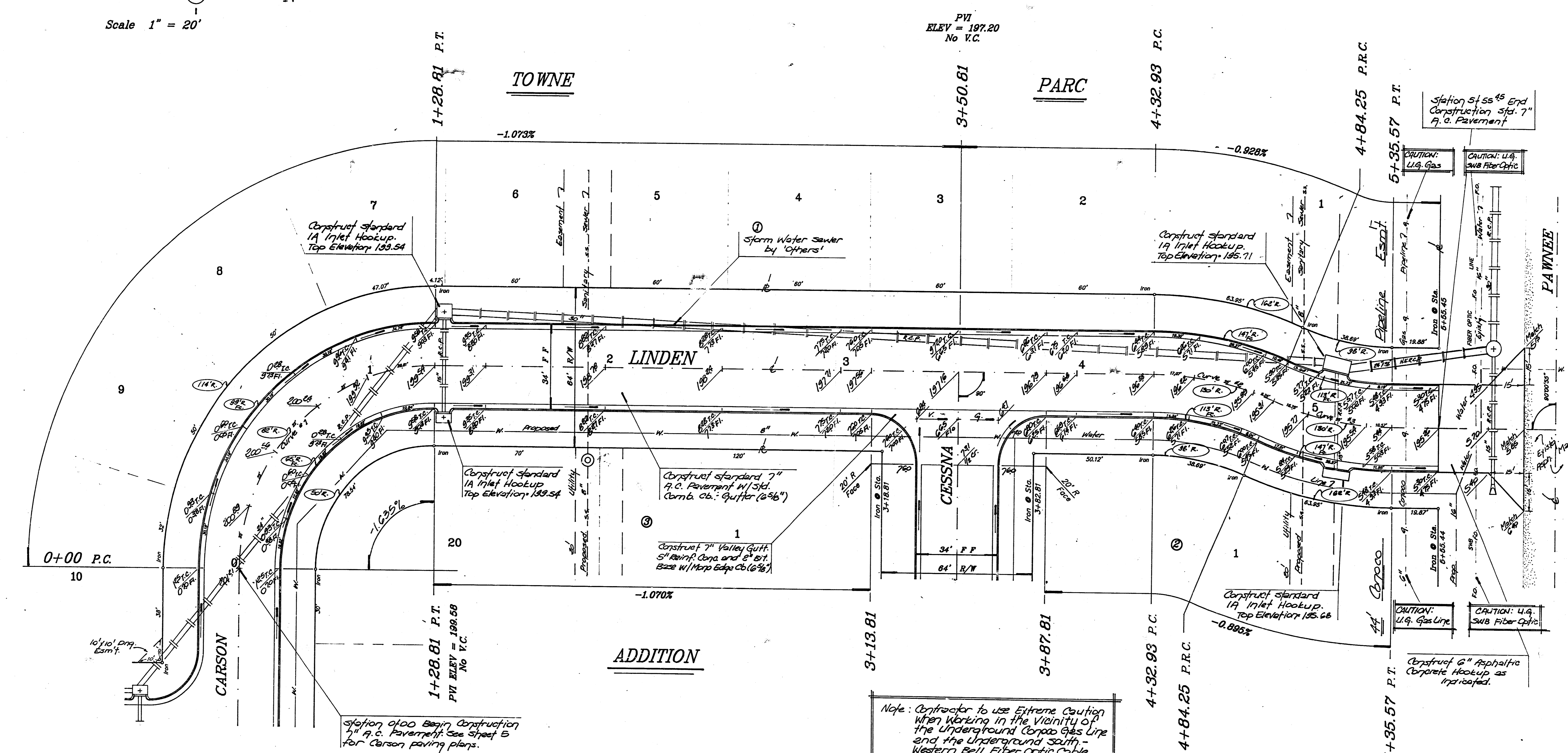
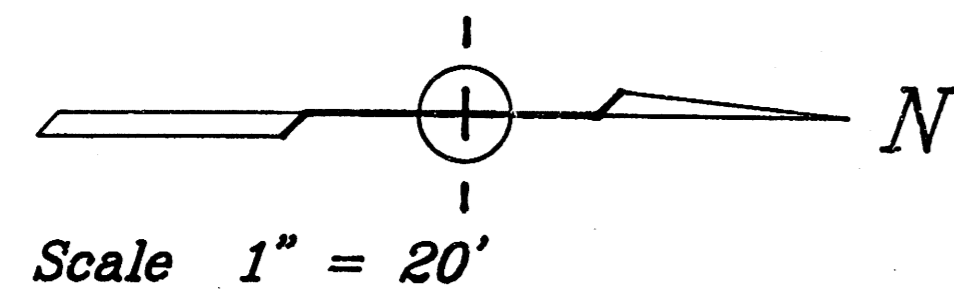
TRANSVERSE CONSTRUCTION JOINTS



TRANSVERSE CONSTRUCTION JOINTS SHALL BE CONSTRUCTED IN FLEXIBLE BASE PAVEMENTS AT LOCATIONS WHERE PAVEMENT JOINS EXISTING FLEXIBLE BASE PAVEMENT AS SHOWN BY THE DETAIL. ALL COSTS ASSOCIATED WITH THE CONSTRUCTION OF THE TRANSVERSE JOINT SHALL BE INCLUDED IN THE BID PRICE FOR SQUARE YARDS 7" ASPHALTIC CONCRETE (5" BITUMINOUS BASE).

7 INCH RESIDENTIAL ASPHALTIC CONCRETE PAVEMENT WITH 5 INCH BITUMINOUS BASE
 CITY OF WICHITA, KANSAS
 PROJECT NUMBER
 472-76-245-80001-000-000-037

FILMED FROM THE BEST AVAILABLE COPY



Index to symbols

- 9 — 9 — Coraco Gas Pipeline
- Fa — Fa — SWB Fiber Optic Cable
- W — W — Water Line (Prop.)
- SS — SS — sanitary sewer (Prop.)
- S — S — storm water sewer pipe
- W — W — Existing Water Line

CURVE DATA BASED ON CENTER LINE

CURVE #1						CURVE #2						CURVE #3					
Radius = 82' Tangent = 82' L Chord = 116.87' Arc = 128.81' Def/foot = 20.8811 mib. Delta = 95 Degrees						Radius = 130' Tangent = 26' L Chord = 50.89' Arc = 51.32' Def/foot = 13.2228 mib. Delta = 22° 37' 12"						Radius = 130' Tangent = 26' L Chord = 50.89' Arc = 51.32' Def/foot = 13.2228 mib. Delta = 22° 37' 12"					
Ctr. Line Station	Arc Length	8' Left of Face	8' Right of Face	Deflection Angle	Total Deflection Angle	Ctr. Line Station	Arc Length	8' Left of Face	8' Right of Face	Deflection Angle	Total Deflection Angle	Ctr. Line Station	Arc Length	8' Left of Face	8' Right of Face	Deflection Angle	Total Deflection Angle
0+00 PC	—	—	—	0° 00' 00"	0° 00' 00"	0+00 PC	—	—	—	0° 00' 00"	0° 00' 00"	0+00 PC	—	—	—	0° 00' 00"	0° 00' 00"
+25	25'	32.48'	17.31'	8° 44' 02"	8° 44' 02"	+32.83 PC	—	—	—	0° 00' 00"	0° 00' 00"	+84.25 PRC	—	—	—	0° 00' 00"	0° 00' 00"
+50	25'	32.48'	17.31'	8° 44' 01"	17° 28' 03"	+50	17.07'	20.34'	13.78'	3° 45' 43"	3° 45' 43"	+00	18.78'	12.71'	18.77'	3° 28' 18"	3° 28' 18"
+75	25'	32.48'	17.31'	8° 44' 02"	26° 12' 05"	+75	25'	29.78'	20.18'	8° 30' 34"	8° 15' 17"	+25	25'	28.78'	28.78'	8° 30' 34"	8° 58' 50"
+100	25'	32.48'	17.31'	8° 44' 02"	34° 56' 07"	+100	25'	29.78'	20.18'	8° 30' 34"	8° 30' 34"	+50	25'	28.78'	28.78'	8° 30' 34"	8° 58' 50"
+128.81 PT	28.81'	37.40'	18.82'	10° 03' 53"	45° 00' 00"	+128.81 PRC	0.25'	11.03'	7.47'	2° 02' 18"	11° 18' 38"	+128.81 PRC	10.57'	8.54'	12.80'	2° 10' 46"	11° 18' 38"

Station 0+00 Begin Construction of A.C. Pavement. See Sheet 5 for Carson paving plans.

Note: Contractor to use Extreme Caution when Working in the Vicinity of the Underground Coraco Gas Line and the Underground South-Western Bell Fiber Optic Cable.

LINDEN
TOWNE PARC ADDITION

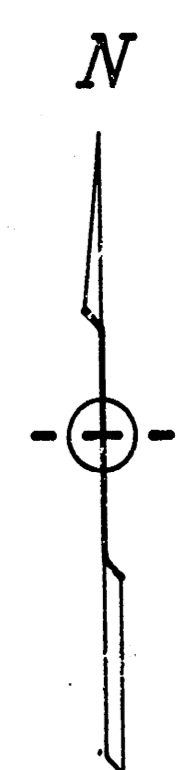
BAUGHMAN COMPANY P.A.
SURVEYING & ENGINEERING
316/282-7271 • 315 ELLIS • WICHITA, KANSAS 67211

PROJECT NUMBER
472-76-245-80001-000-000-037

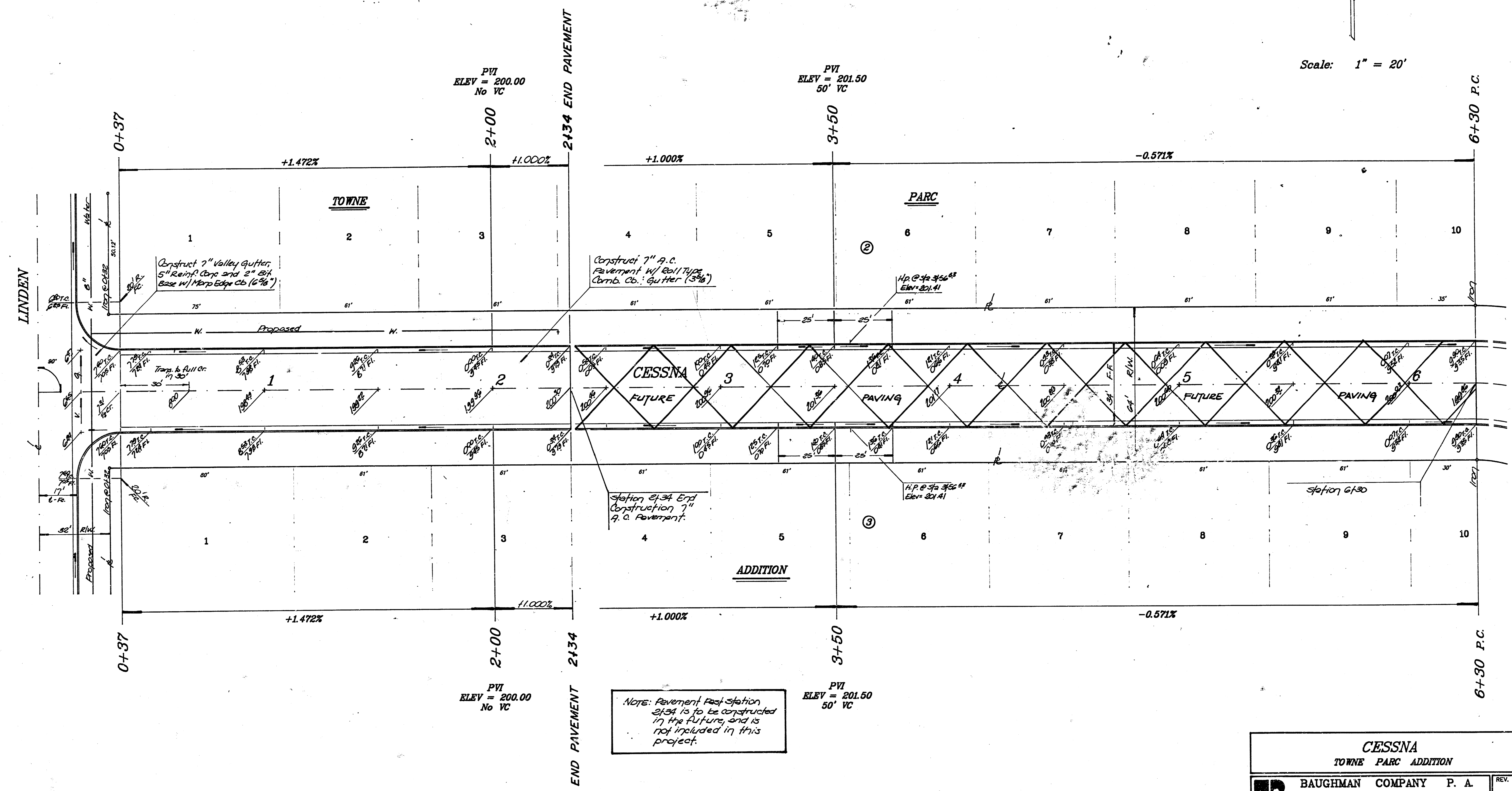
DESIGN: CB DRAWN: DMH APPROVED: DATE: SCALE: 1" = 20'

SHEET 3 OF 5

FILMED FROM THE BEST AVAILABLE COPY



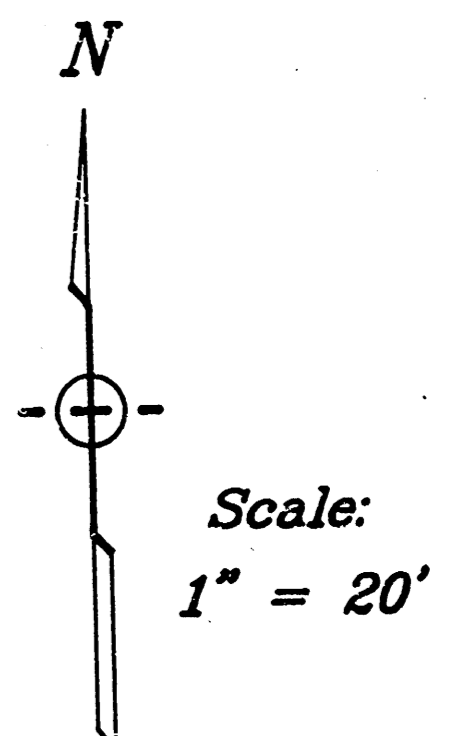
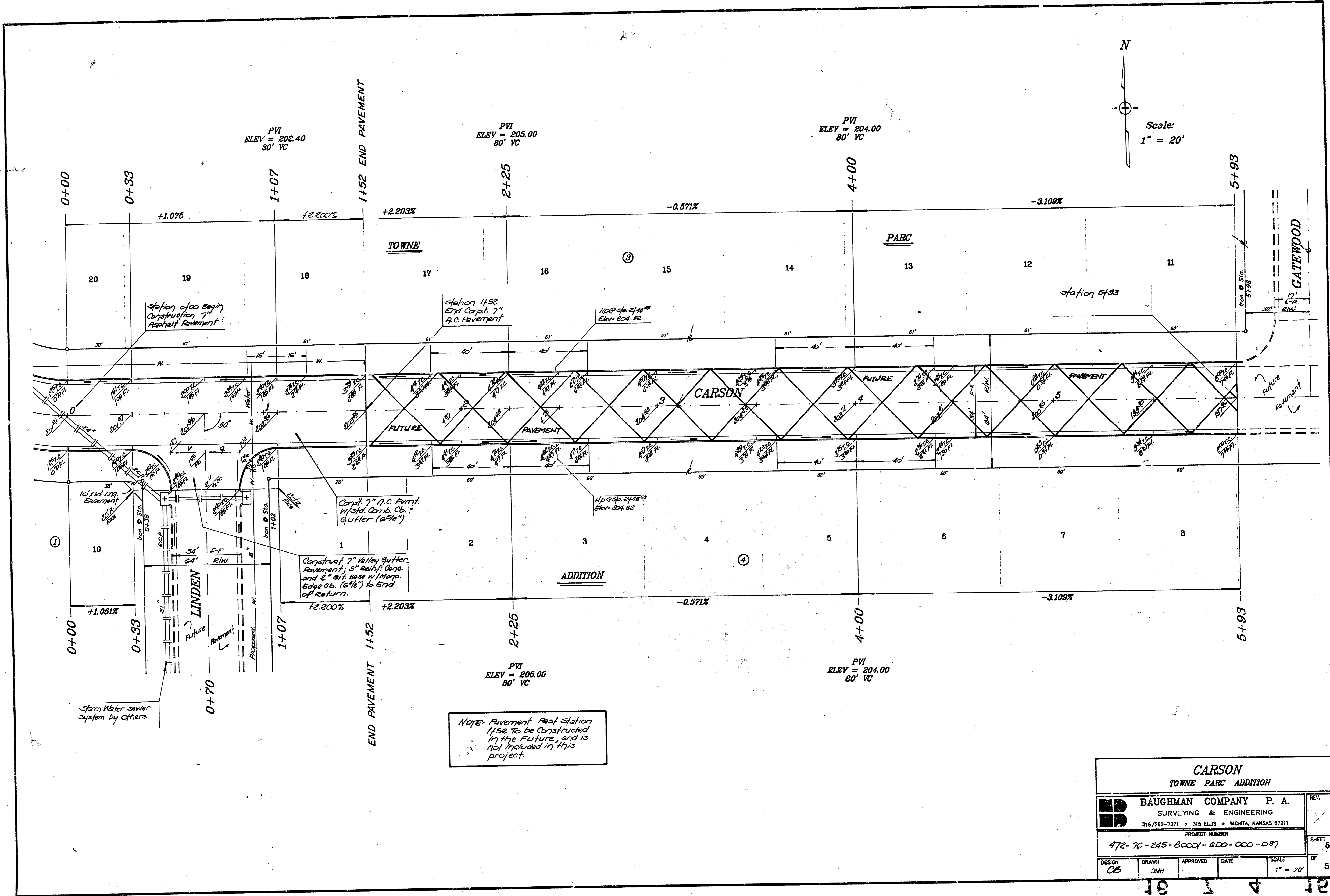
Scale: 1" = 20'



Note: Pavement Past Station 2+34 is to be constructed in the future and is not included in this project.

CESSNA				
TOWNE PARC ADDITION				
	BAUGHMAN COMPANY P. A.			
	SURVEYING & ENGINEERING			
316/282-7271 • 315 ELLIS • WICHITA, KANSAS 67211				
PROJECT NUMBER				
472-76-245-80001-000-000-057				
DESIGN	DRAWN	APPROVED	DATE	SCALE
CB	DMH			1" = 20'
				REV. 4
				SHEET 4
				OF 5

FILMED FROM THE BEST AVAILABLE COPY



NOTE: Pavement Past Station 1+52 To be Constructed in the Future, and is not included in this project.

CARSON TOWNE PARC ADDITION				
BAUGHMAN COMPANY P. A. SURVEYING & ENGINEERING 316/282-7271 • 315 ELLIS • WICHITA, KANSAS 67211				
PROJECT NUMBER 472-76-245-3000-000-000-037				
DESIGN CB	DRAWN DMH	APPROVED	DATE	SCALE 1" = 20'
				REV. 5 OF 5

FILMED FROM THE BEST AVAILABLE COPY