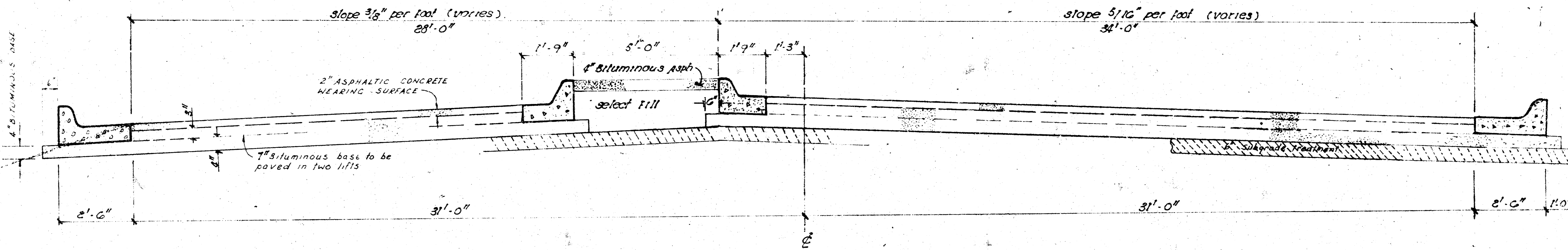


**TRACY STREET**  
**N. L. KELLOGG DRIVE TO S. L. TAFT STREET**  
**PROJ No. 472-76-245-80633000-000-001**



**TYPICAL SECTION**

The A.C. pavement between the comb. curb & gutter shall be paid as sq. yds. 3" A.C. pavement (7" Bituminous Base). The Bituminous Base under the comb. curb & gutter shall be paid as sq. yds. 7" Bituminous Base.

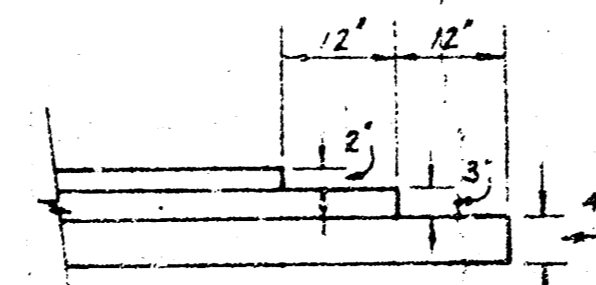
**66' ASPHALTIC CONCRETE PAVEMENT WITH BITUMINOUS BASE**

A TACK COAT OF EMULSIFIED ASPHALT SS 1H SHALL BE APPLIED AT AN APPROXIMATE RATE 0.05 GALLONS PER SQ. YD. BETWEEN LIFTS OF ASPHALTIC MATERIALS WHEN ORDERED BY THE ENGINEER. TACK COAT WILL NOT BE PAID FOR DIRECTLY AND SHALL BE CONSIDERED AS SUBSIDIARY TO PRICE BID FOR ASPHALTIC PAVEMENT.

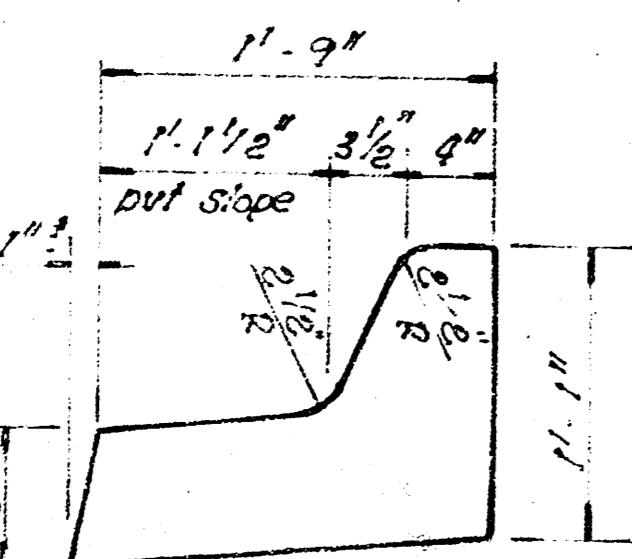
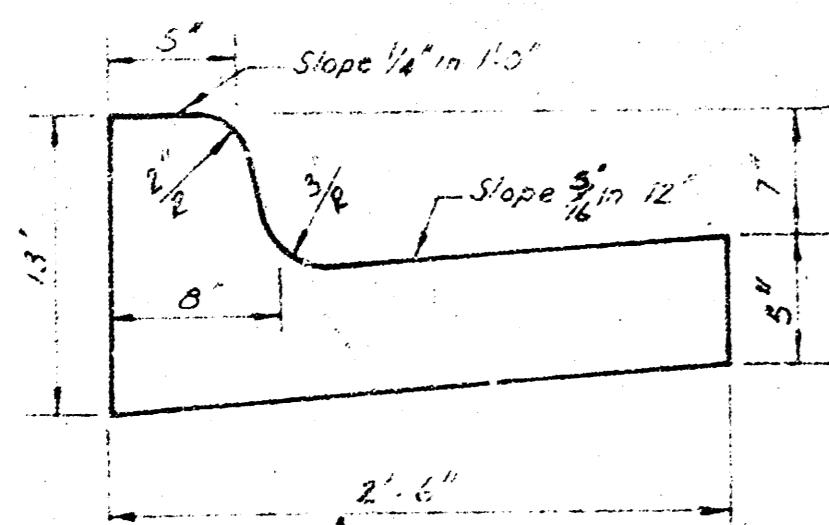
BITUMINOUS BASE AND ASPHALTIC CONCRETE WEARING SURFACE SHALL BE PLACED WITH A LAYDOWN MACHINE HAVING AUTOMATIC CONTROLS FOR CROWN AND GRADE. CONSTRUCTION JOINTS IN EACH LIFT SHALL BE STAGGERED A MINIMUM DISTANCE OF 1' WITH JOINTS IN PRECEDING LIFTS AND SUCH THAT A JOINT WILL BE CONSTRUCTED ON THE PAVEMENT CENTERLINE IN THE TOP LIFT.

**DETAIL OF TRANSVERSE CONSTRUCTION JOINTS.**

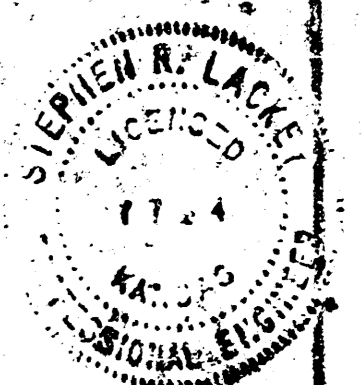
TRANSVERSE CONSTRUCTION JOINTS SHALL BE CONSTRUCTED IN FLEXIBLE BASE PAVEMENTS AT LOCATIONS WHERE PAVEMENT TEMPORARILY ENDS TO FACILITATE FUTURE PAVEMENT CONSTRUCTION AS SHOWN BY DETAIL. THE COST OF CONSTRUCTING THE TRANSVERSE CONSTRUCTION JOINTS SHALL NOT BE MEASURED OR PAID FOR DIRECTLY BUT SHALL BE INCLUDED IN THE BID PRICE FOR SQUARE YARDS OF ASPHALTIC CONCRETE PAVEMENT.



**COMBINED CURB & GUTTER**



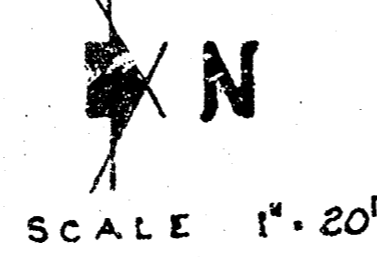
**MEDIAN CURB**



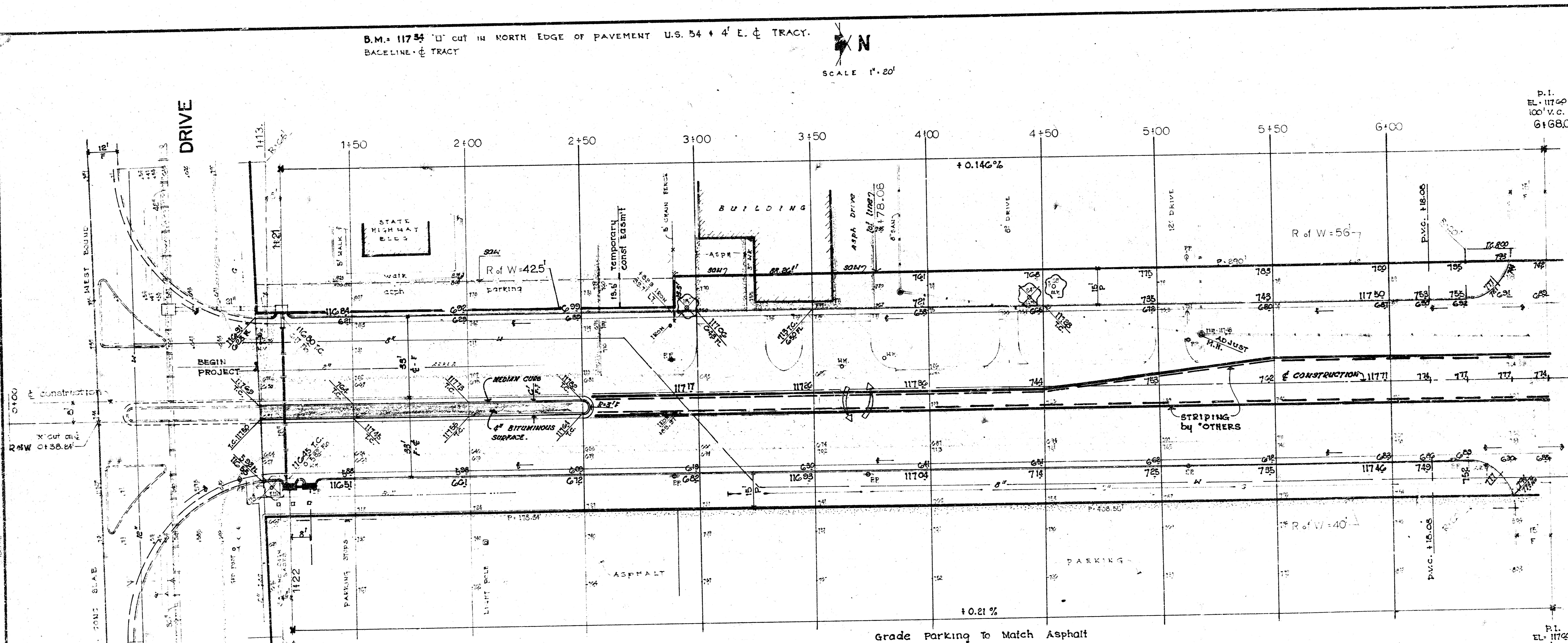
**CITY OF WICHITA, KANSAS**  
 DEPARTMENT of PUBLIC WORKS - Engineering Division.  
 DEAN SELLERS Acting City Engineer  
 DATE \_\_\_\_\_

1/6

B.M. 117.54 1' cut in north edge of pavement U.S. 54 + 4' E. of TRACY.  
 BASELINE = TRACY



P.I.  
 EL. 117.60  
 100' V.C.  
 6+68.00



P.I.  
 EL. 117.60  
 100' V.C.

**TRACY STREET**  
 From N.L. KELLOGG DRIVE TO S.L. TAFT  
**CITY WICHITA, KANSAS**

(66' FF) Accl-Decl 2" AC Surface  
 Bituminous base w comb Curb & Gtr.

Date:  
 Proj. No. 472 76 245 80633000 000 001

REVISD APRIL 1980

EXCAVATION  
 3423.1 cu yds  
 110% 342.3 " "  
 5165.4 cu yds

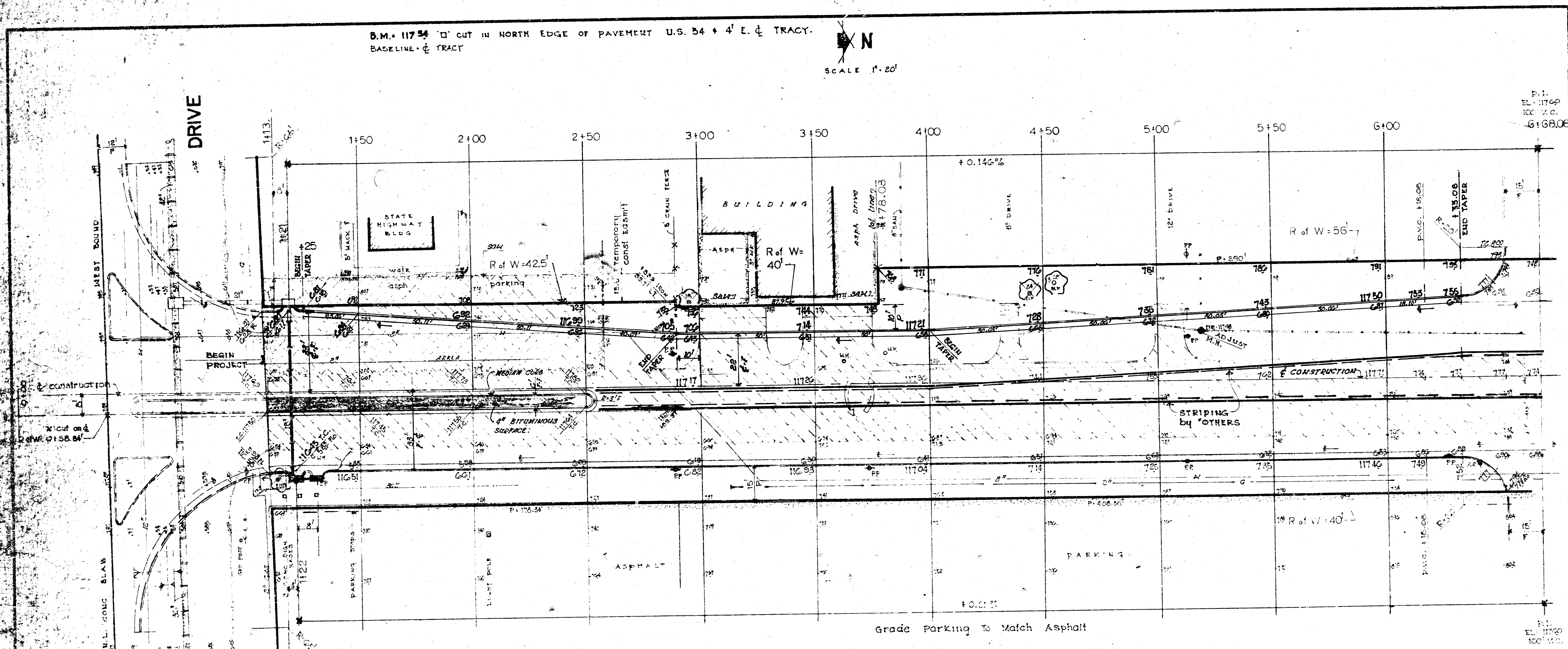
2  
 6

FILMED FROM THE BEST AVAILABLE COPY

B.M. 11734 □ CUT IN NORTH EDGE OF PAVEMENT U.S. 54 + 4' E. OF TRACY.  
 BASELINE OF TRACY

SCALE 1" = 20'

P.I.  
 EL. 11740  
 100' V.C.  
 -6+68.06



DRIVE

KELLOGG

REVISED APRIL 1980  
 - REVISED JULY 1980 -

EXCAVATION  
 3423.1 cu yds  
 110% 342.3  
 51654 cu yds

TRACY STREET  
 From N.L. KELLOGG DRIVE To S.L. TAFT  
 CITY WICHITA, KANSAS

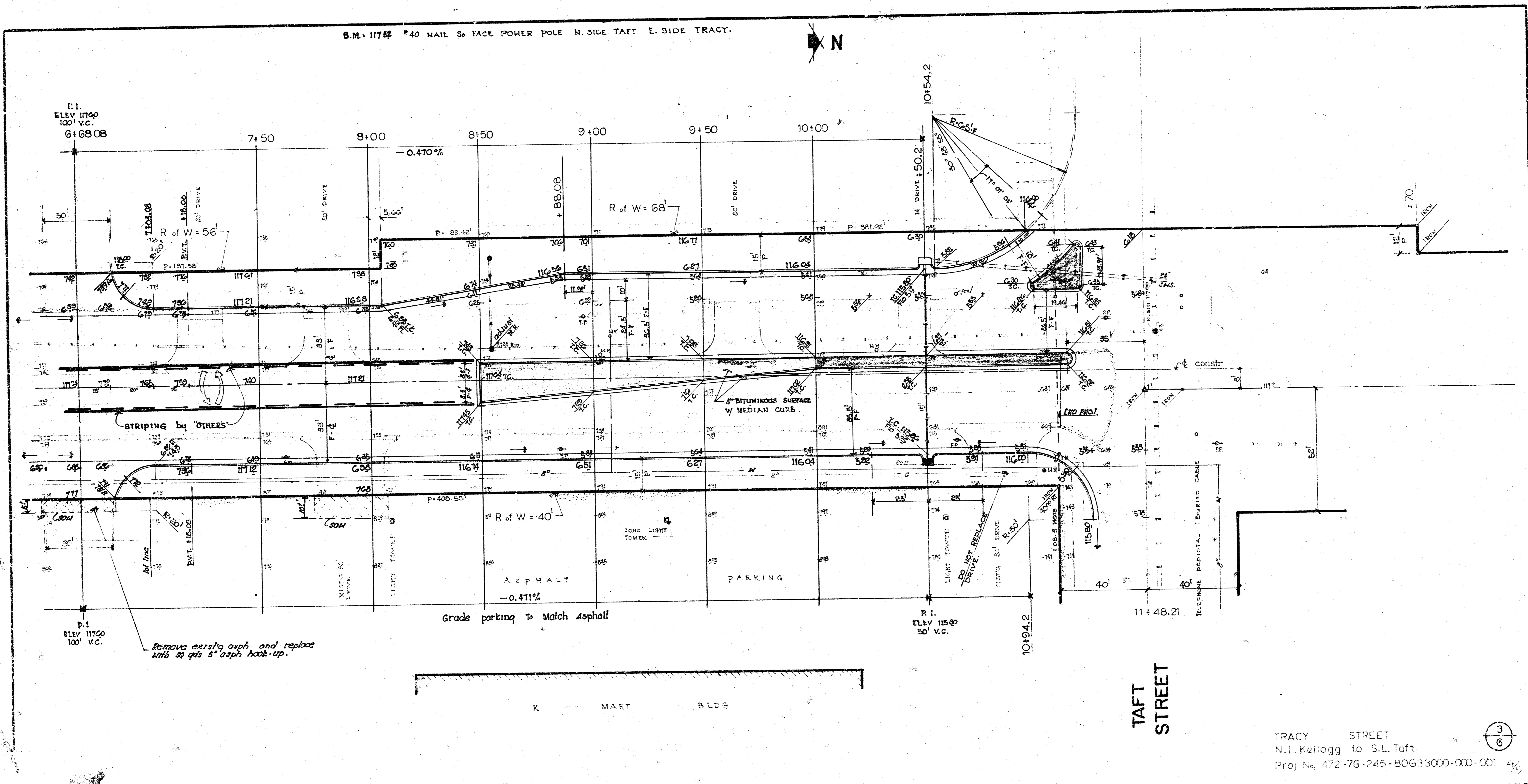
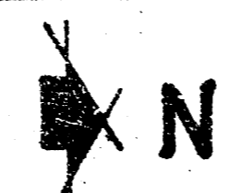
(66 F.F.) Accl-Decel 2' AC. Surface + 7'  
 Bituminous base w/ comb Curb & Gtr.

2A  
 6

Date:  
 Proj No. 472 76 245 80633000 000 001

FILMED FROM THE BEST AVAILABLE COPY

B.M. 11752 \*40 NAIL 50' FACE POWER POLE N. SIDE TAFT E. SIDE TRACT.



Remove existing asphalt and replace with 30 gals 5\"/>

Grade parking to match asphalt

K MART BLDG

TAFT STREET

TRACY STREET  
N.L. Keillogg to S.L. Taft  
Proj. No. 472-76-245-80633000-000-001 4/3

3/6

FILMED FROM THE BEST AVAILABLE COPY .....

