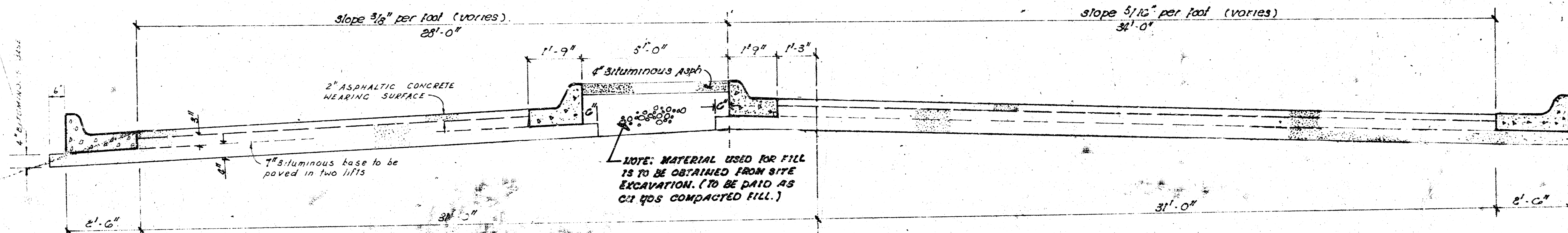


TRACY STREET
S.L. TAFT STREET TO S.L. MAPLE STREET
PROJ No. 472-76-245-80876000-000-001



The A.C. pavement between the comb. curb & gutter shall be paid as sq. yds. 9" A.C. pavement (7" Bituminous Base). The Bituminous Base under the comb. curb & gutter shall be paid as sq. yds. 4" Bituminous Base.

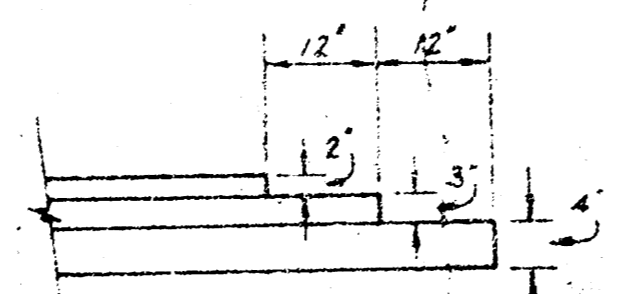
TYPICAL SECTION

66' ASPHALTIC CONCRETE PAVEMENT WITH BITUMINOUS BASE

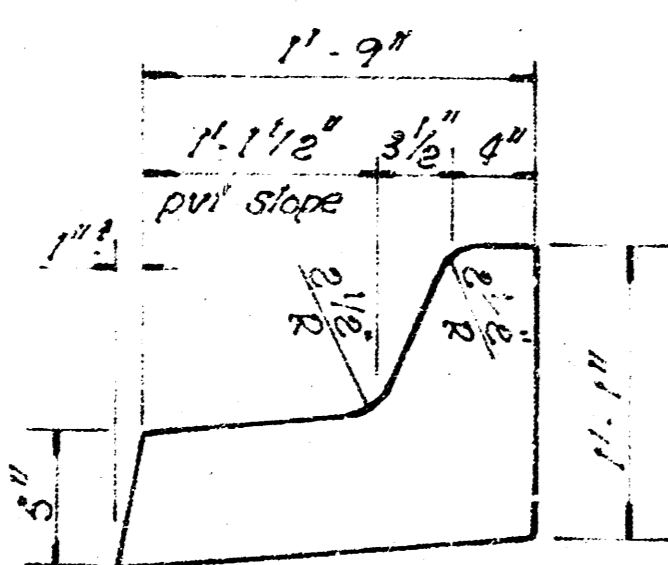
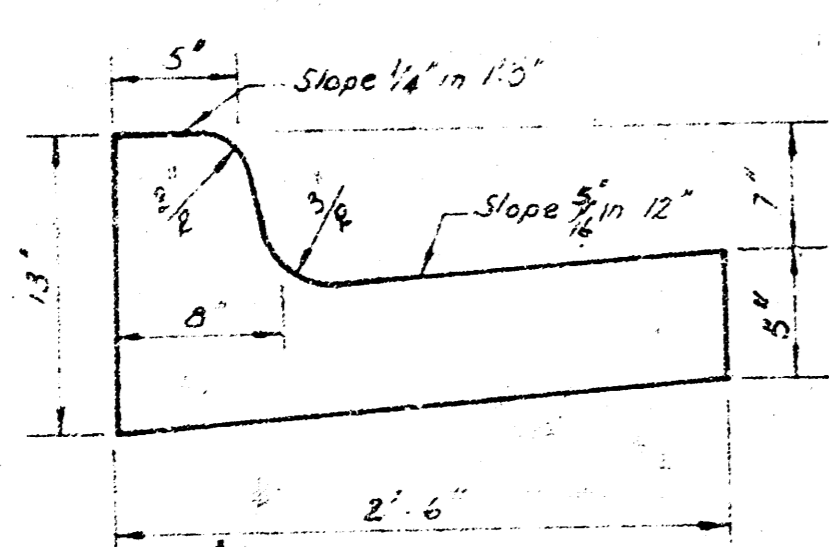
A TACK COAT OF EMULSIFIED ASPHALT SS 1H SHALL BE APPLIED AT AN APPROXIMATE RATE 0.05 GALLONS PER SQ. YD. BETWEEN LIFTS OF ASPHALTIC MATERIALS WHEN ORDERED BY THE ENGINEER. TACK COAT WILL NOT BE PAID FOR DIRECTLY AND SHALL BE CONSIDERED AS SUBSIDIARY TO PRICE BID FOR ASPHALTIC PAVEMENT. BITUMINOUS BASE AND ASPHALTIC CONCRETE WEARING SURFACE SHALL BE PLACED WITH A LAYDOWN MACHINE HAVING AUTOMATIC CONTROLS FOR CROWN AND GRADE. CONSTRUCTION JOINTS IN EACH LIFT SHALL BE STAGGERED A MINIMUM DISTANCE OF 1' WITH JOINTS IN PRECEDING LIFTS AND SUCH THAT A JOINT WILL BE CONSTRUCTED ON THE PAVEMENT CENTERLINE IN THE TOP LIFT.

DETAIL OF TRANSVERSE CONSTRUCTION JOINTS.

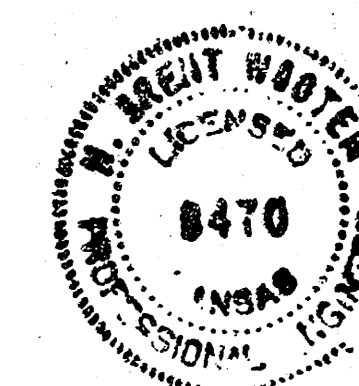
TRANSVERSE CONSTRUCTION JOINTS SHALL BE CONSTRUCTED IN FLEXIBLE BASE PAVEMENTS AT LOCATIONS WHERE PAVEMENT TEMPORARILY ENDS TO FACILITATE FUTURE PAVEMENT CONSTRUCTION AS SHOWN BY DETAIL. THE COST OF CONSTRUCTING THE TRANSVERSE CONSTRUCTION JOINTS SHALL NOT BE MEASURED OR PAID FOR DIRECTLY BUT SHALL BE INCLUDED IN THE BID PRICE FOR SQUARE YARDS OF ASPHALTIC CONCRETE PAVEMENT.



COMBINED CURB & GUTTER

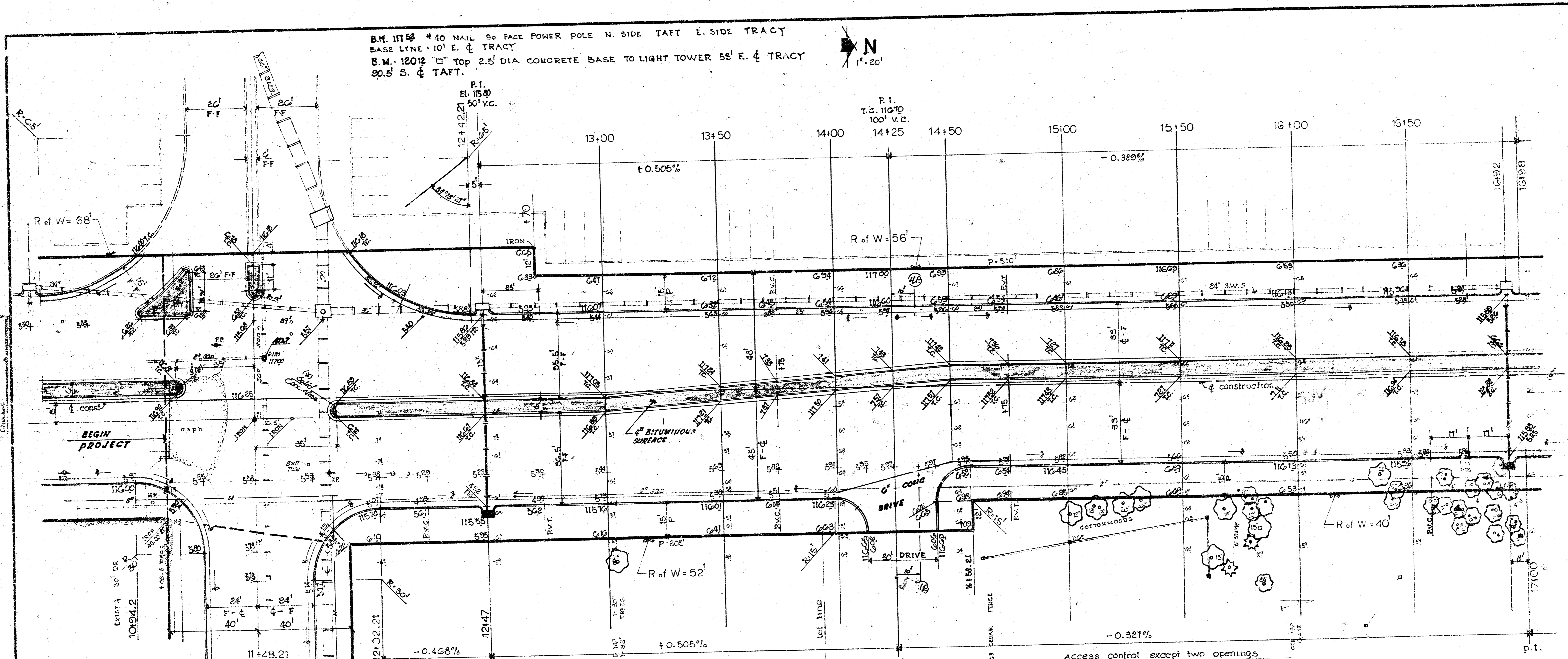
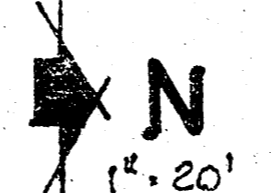


MEDIAN CURB



CITY OF WICHITA, KANSAS.
 DEPARTMENT of PUBLIC WORKS - Engineering Division.
 DEAN SELLERS Acting City Engineer
 DATE _____

B.M. 11752 #40 NAIL 50 FACE POWER POLE N. SIDE TAFT E. SIDE TRACY
 BASE LINE 10' E. OF TRACY
 B.M. 12012 "□" TOP 2.5' DIA CONCRETE BASE TO LIGHT TOWER 53' E. OF TRACY
 30.5' S. OF TAFT.



•• TIES TO IRON STA 11+48.21 ••
 43.65' S.E. to top E. CURB TRACY
 45.07' S.E. to top 4\"/>

"EARTHWORK"

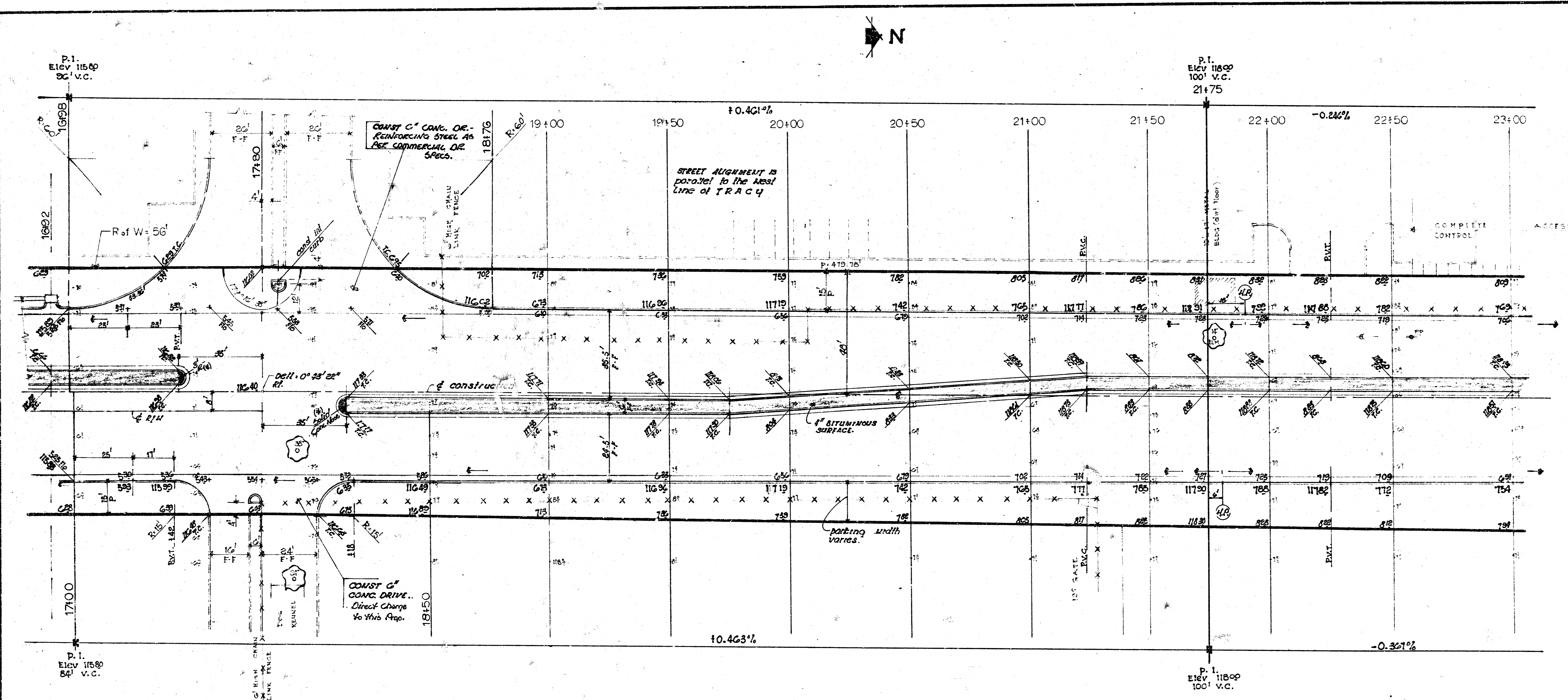
"PROPERTY"	"CITY"
EXCAVATION	EXCAVATION
477.0 CU YDS	301.7 CU YDS
110% 417.7	110% 302.2
5237.3 CU YDS	331.9 CU YDS
C. FILL	C. FILL
2.0 CU YDS	2.9 CU YDS
110% .8	

Note:
 No Subgrade Modification or Treatment to be performed in this Project.
 Irons moved or destroyed due to construction shall be replaced.
 Engineer to determine what trees are to be removed.
 6\"/>

2
9

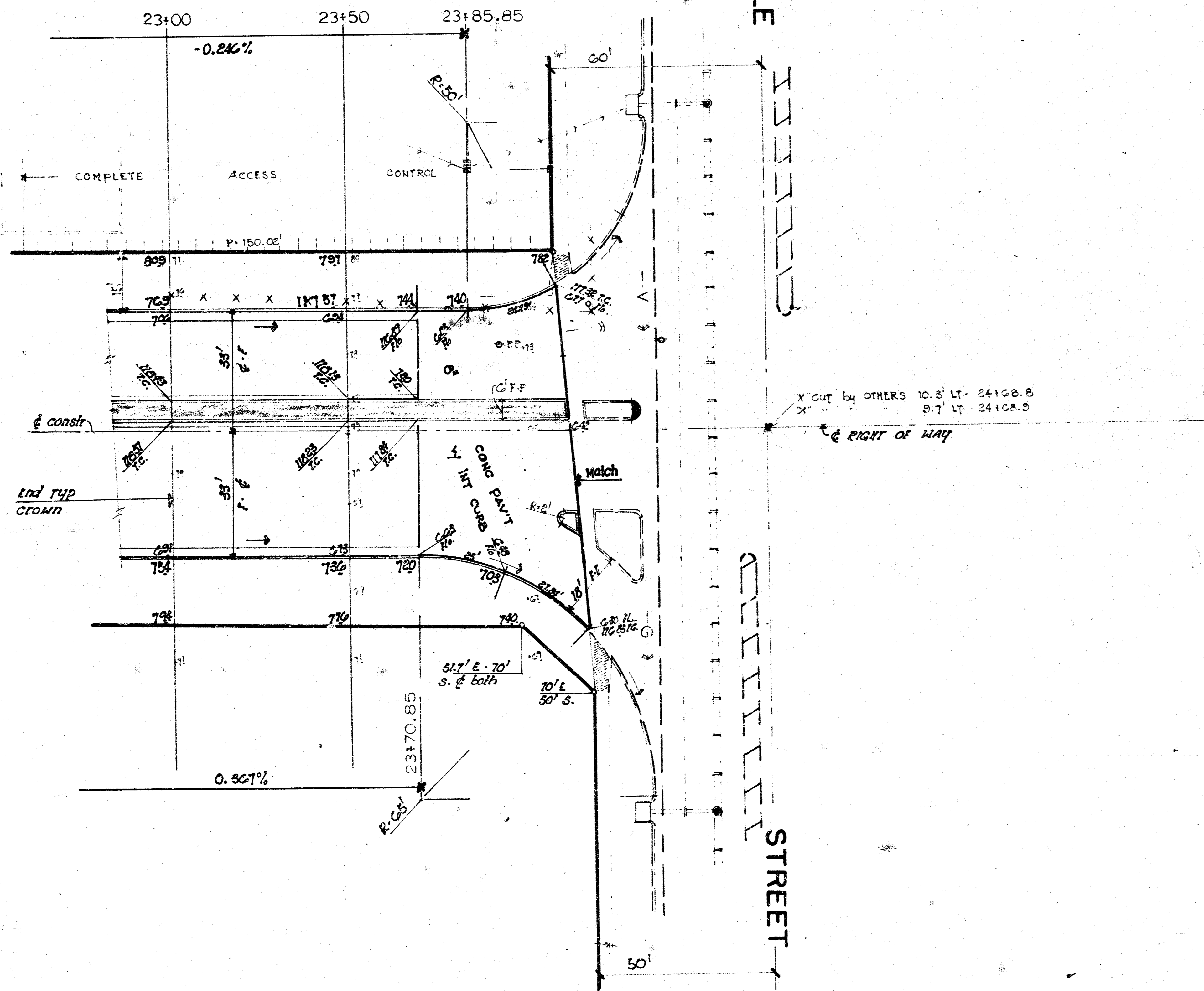
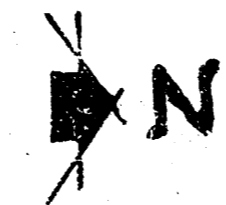
TRACY STREET
 From S.L. TAFT To S.L. MAPLE ST
CITY WICHITA, KANSAS
 (66' FF) 2\"/>

Date:
 Proj. No. 472-76-245-80676(000-000-001)



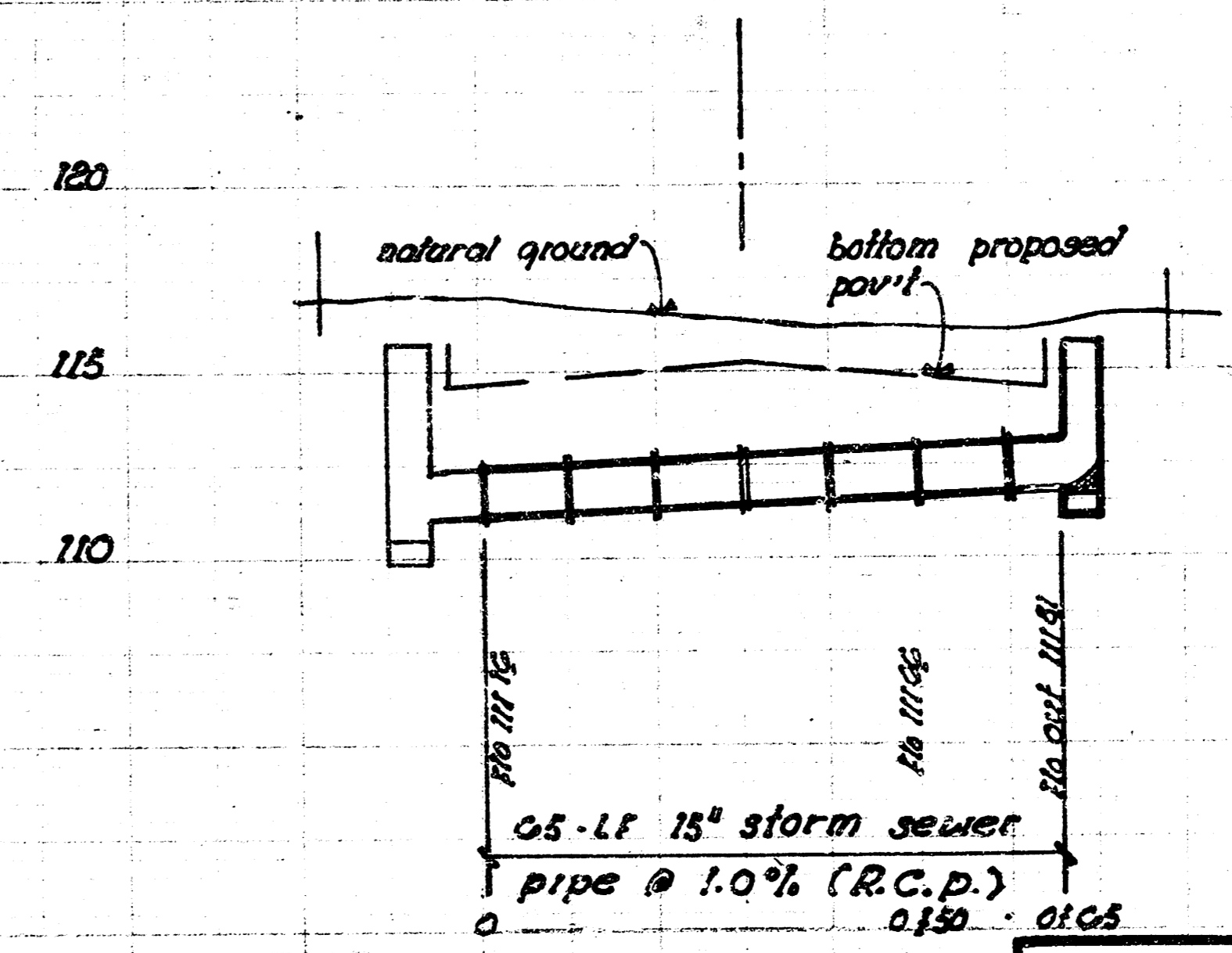
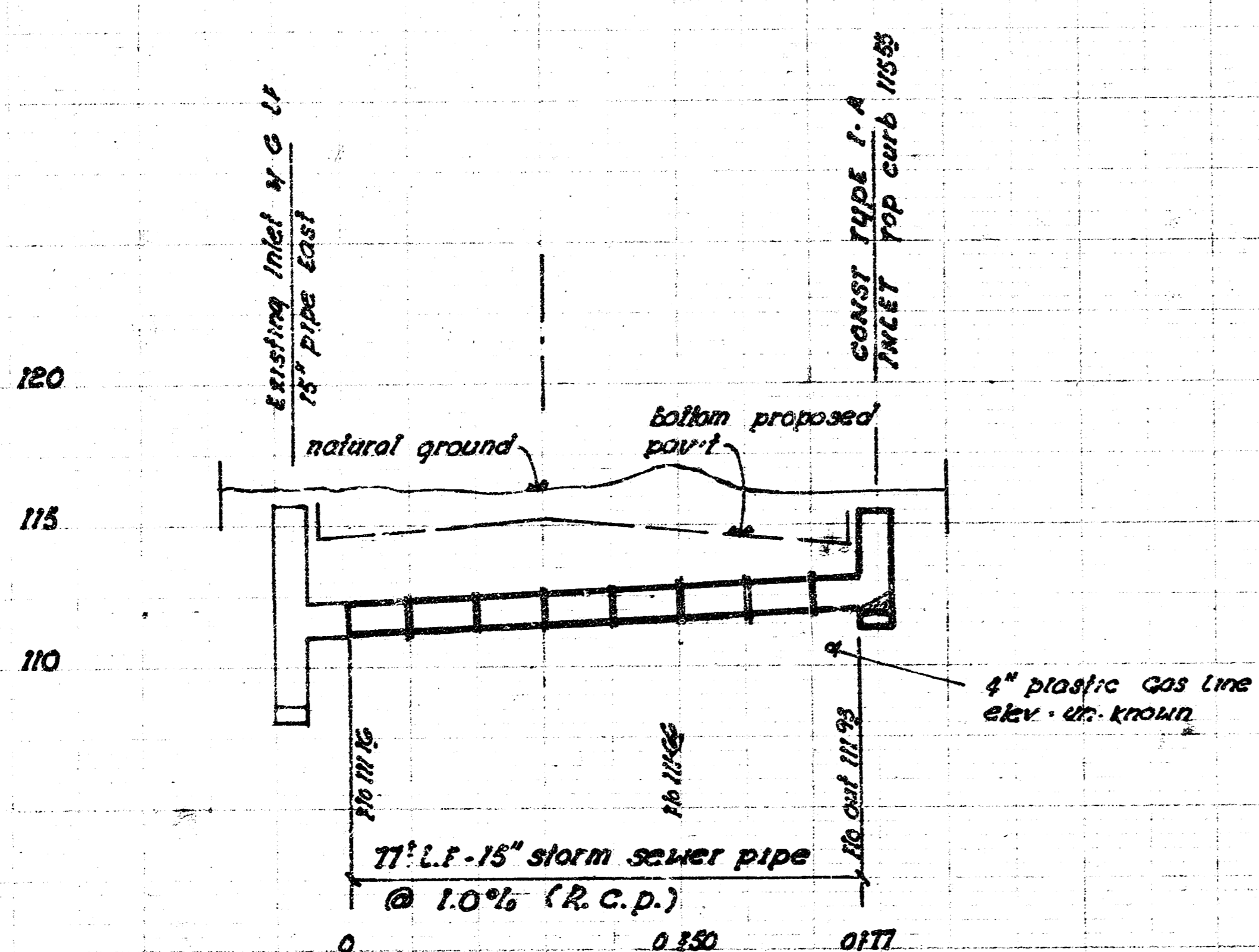
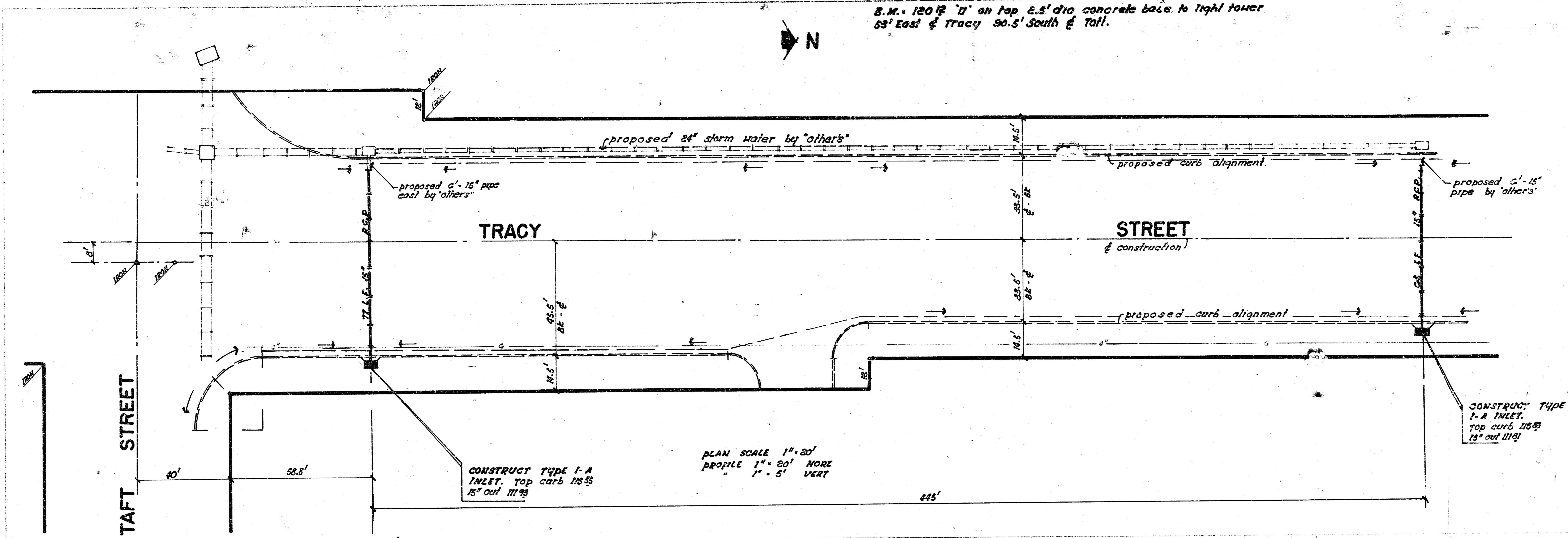
TRACY STREET
S.L. Taft to S.L. Maple
Proj No. 472-76-245-80676000-000-001

B.M. 110 NORTH CURB MAPLE @ E.L. TRACY



TRACY STREET
S.L. Taft to S.L. Maple
Proj No 472-76-245-80676000-000-C01

B.M. 120 12' on top 2.5' dia concrete base to right tower
 53' East of Tracy 90.5' South of Taft.



DRAINAGE in connection with paving
 TRACY STREET S.L. Taft To
 S.L. Maple.
 CITY OF WICHITA, KANSAS
 DEAN SELLERS Acting City Engineer
 Date
 Proj No. 472-76-245-80676000-000-002

