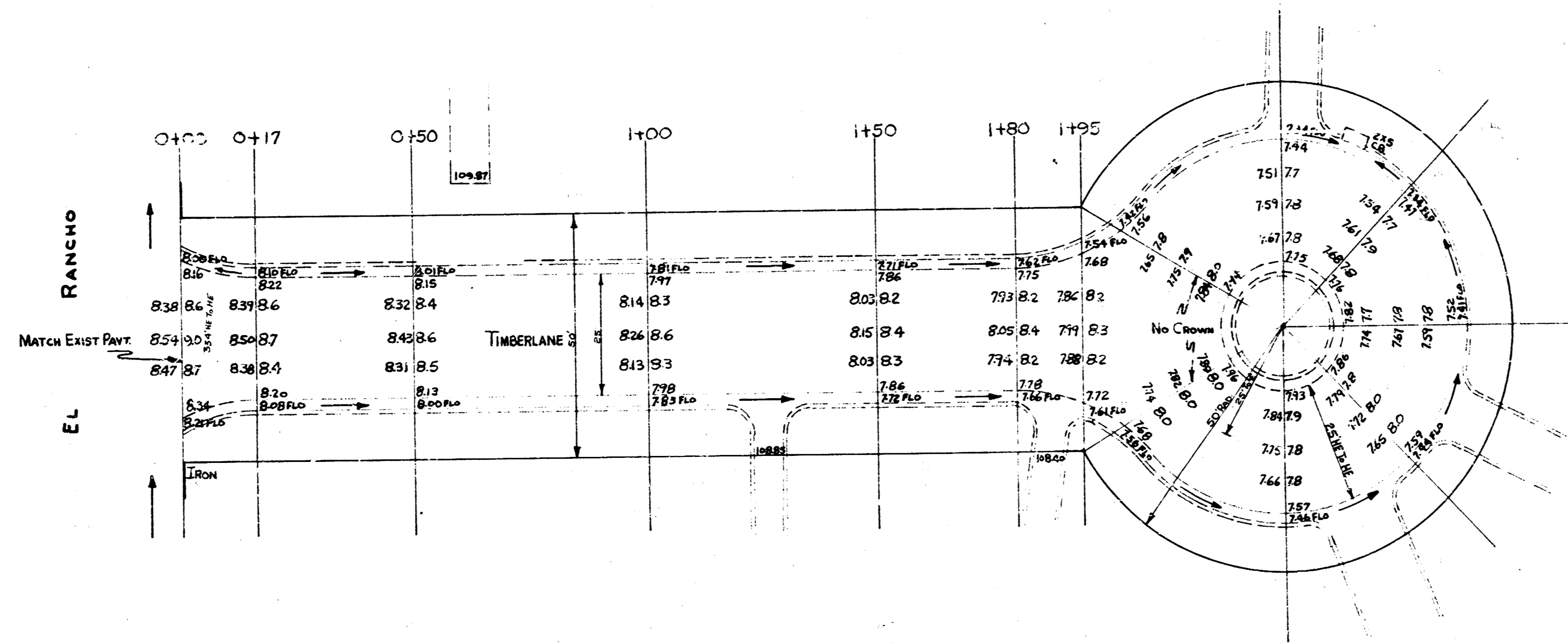
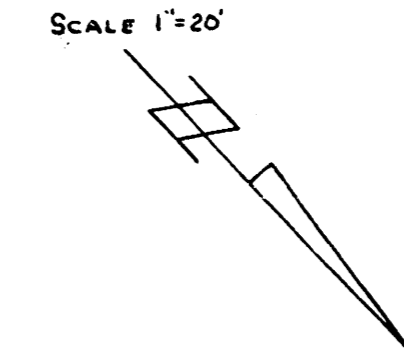


STATION #  
 B.M. 109.05 "X" ON S. Q. EL RANCHO 15' E. OF E.L. TIMBERLANE.  
 B.M. 108.91 "X" ON S. Q. EL RANCHO AT N. END C.B. 15' W. OF W.L. GLEN OAKS DR.

SCALE 1"=20'



WILLS 1-11-1954  
 SEAMAN  
 W.R.

**TIMBERLANE**  
 E.L. EL RANCHO N-TO-N. END OF CUL-DESIGN  
 26' CONC.  
 CITY OF WICHITA KAN.  
 B.E. SMITH CITY ENGINEER  
 SEPT. 1954 PROJ. NO. CIV-236