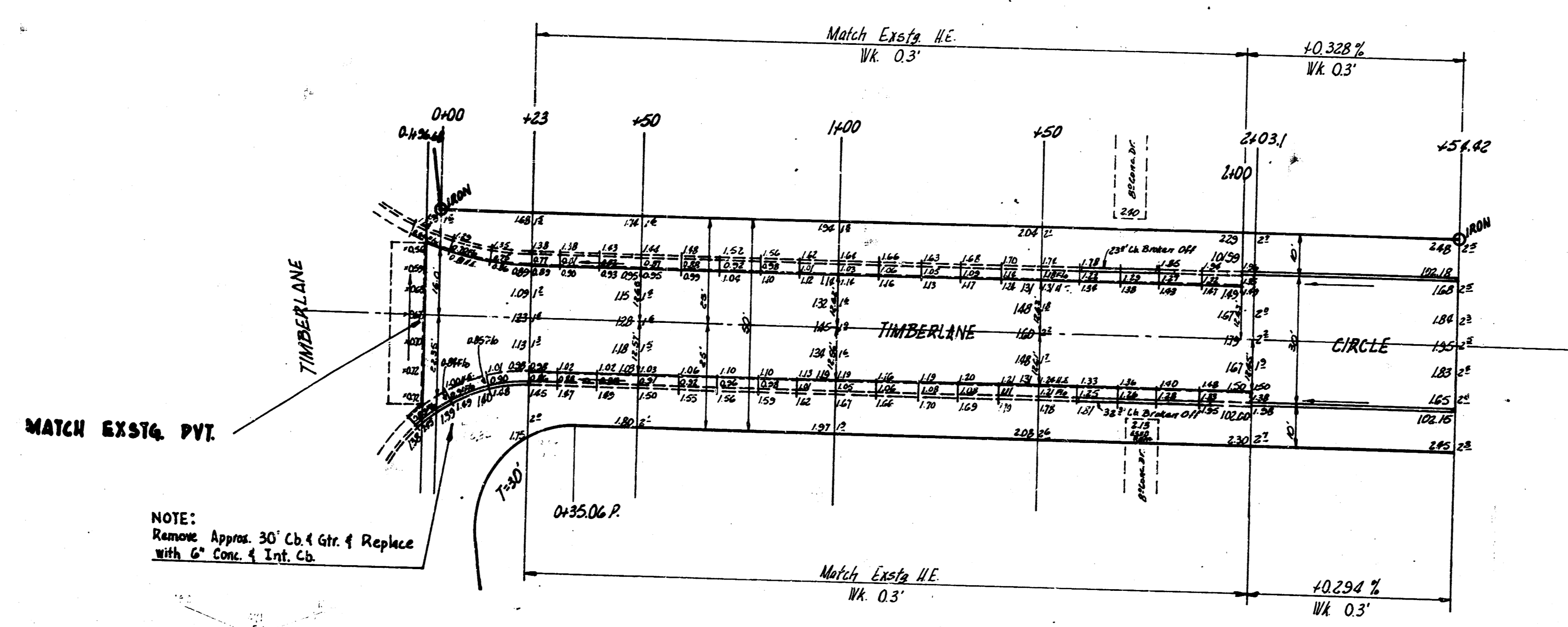


B.M. 105.14 NW Cor. Conc. Step Nos. #3143 Timberlane.
 B.M. 102.91 NE Cor. Conc. Step Nos. #2951 Timberlane

Chaining N. on 4, also 3rd Ch. & Gr.



NOTE:
 Remove Approx. 30' Ch. & Gr. & Replace
 with 6" Conc. & Int. Ch.



TIMBERLANE CIRCLE
 N.L. TIMBERLANE - N.L. Lot 12, Blk. B, REPLAT
 OF PART OF PANNIEE RANCA ADD
 30' CONC. & CB.
 CITY OF WICHITA, KANS.
 B.E. SMITH CITY ENGINEER
 AUG 1955 PROJ. NO. C15-52