

B.M. 102.09 N.E. Cor. Conc. Porch No. 2957 Glenn Oaks Drive
 B.M. 101.55 S.W. Cor. Conc. Porch No. N.E. Cor. Pawnee & Choutauque.

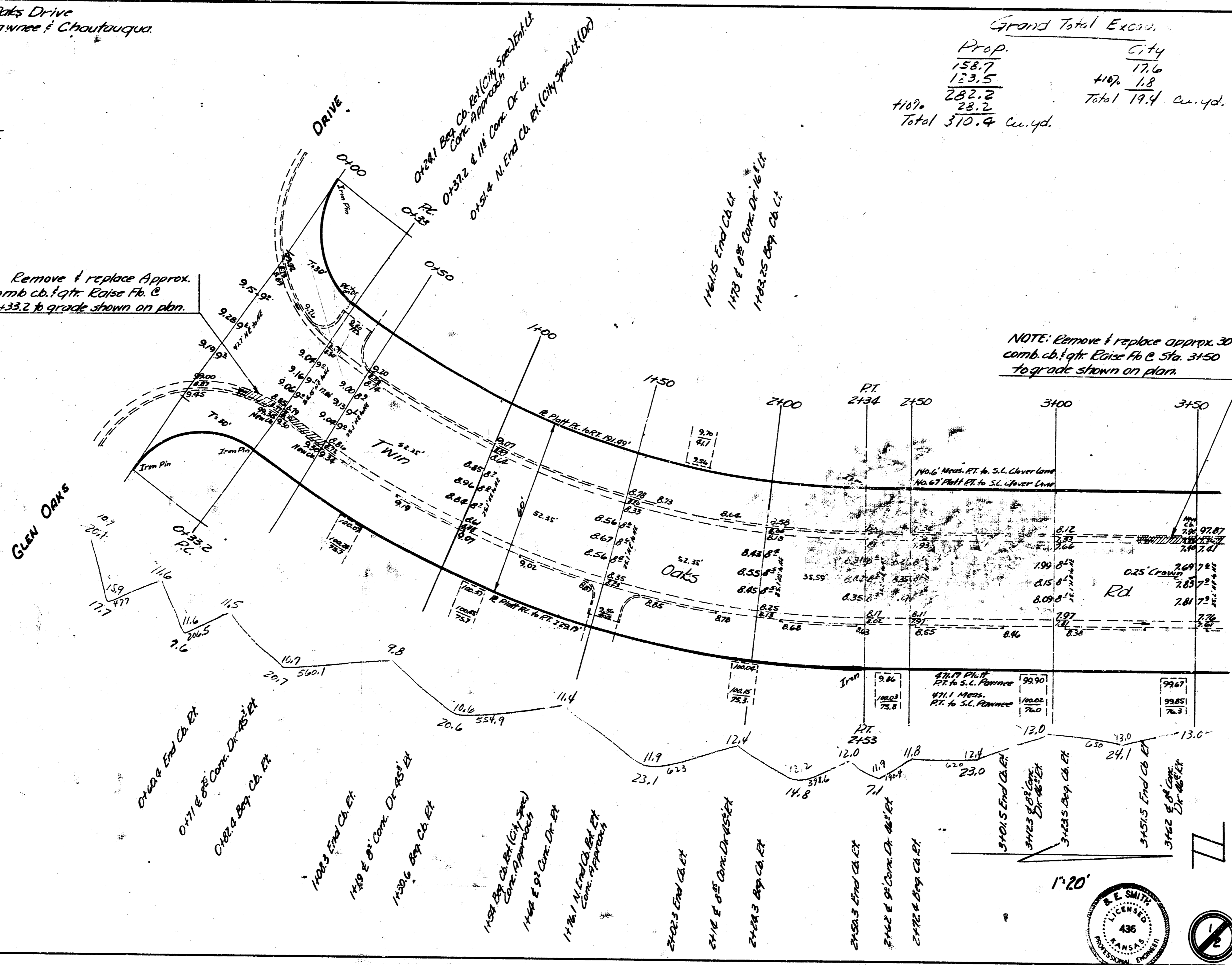
NOTE: X- Sec. are Sta. on W. Cb. face
 1.00 on X- Sec. is W. Cb. face
 2. Drives on Rt. are from Lt. Cb. face
 3. Drives on Lt. are from Lt. Cb. face
 4. All Sta. shown to Rt. are from 0+00 on E. Cb. face, 1 all Sta. shown to Lt. are from 0+00 on W. Cb. face.
 5. 2.95 Comb. Cb. f. at both Rt. & Lt.

NOTE: Remove & replace Approx. 33' comb. c.b. f. at Sta. 0+33.2 to grade shown on plan.

Grand Total Excav.

Prop.	City	Excav.
158.7	17.6	17.7
133.5	4.8	2.6
282.2	19.4	20.7
419.2		23.1
28.2		11.8
Total 370.4 cu. yd.		7.1
		23.0
		14.1
		733.7 cu. yd.

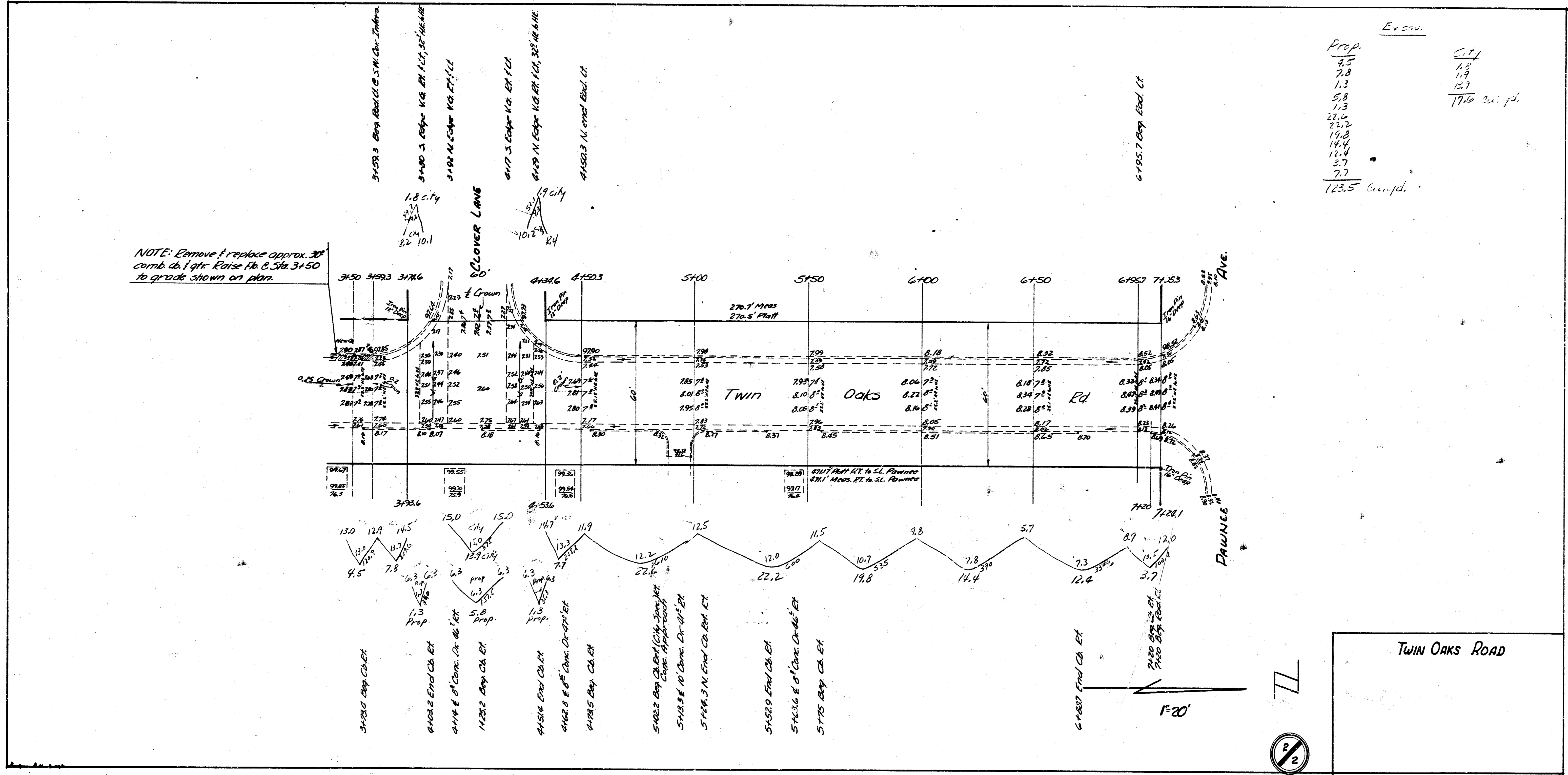
Prop.	City	Excav.
17.7	0	17.7
2.6		2.6
20.7		20.7
23.1		23.1
11.8		11.8
7.1		7.1
23.0		23.0
14.1		14.1
		733.7 cu. yd.



NOTE: Remove & replace approx. 30' comb. c.b. f. at Sta. 3+50 to grade shown on plan.

TWIN OAKS ROAD
 N.L. GLEN OAKS TO S.L. PAWNEE
 26' CONC.
 CITY OF WICHITA, KANSAS
 B.E. SMITH CITY ENGINEER
 JAN. 26, 1953 Proj. No. C12-234





TWIN OAKS ROAD

