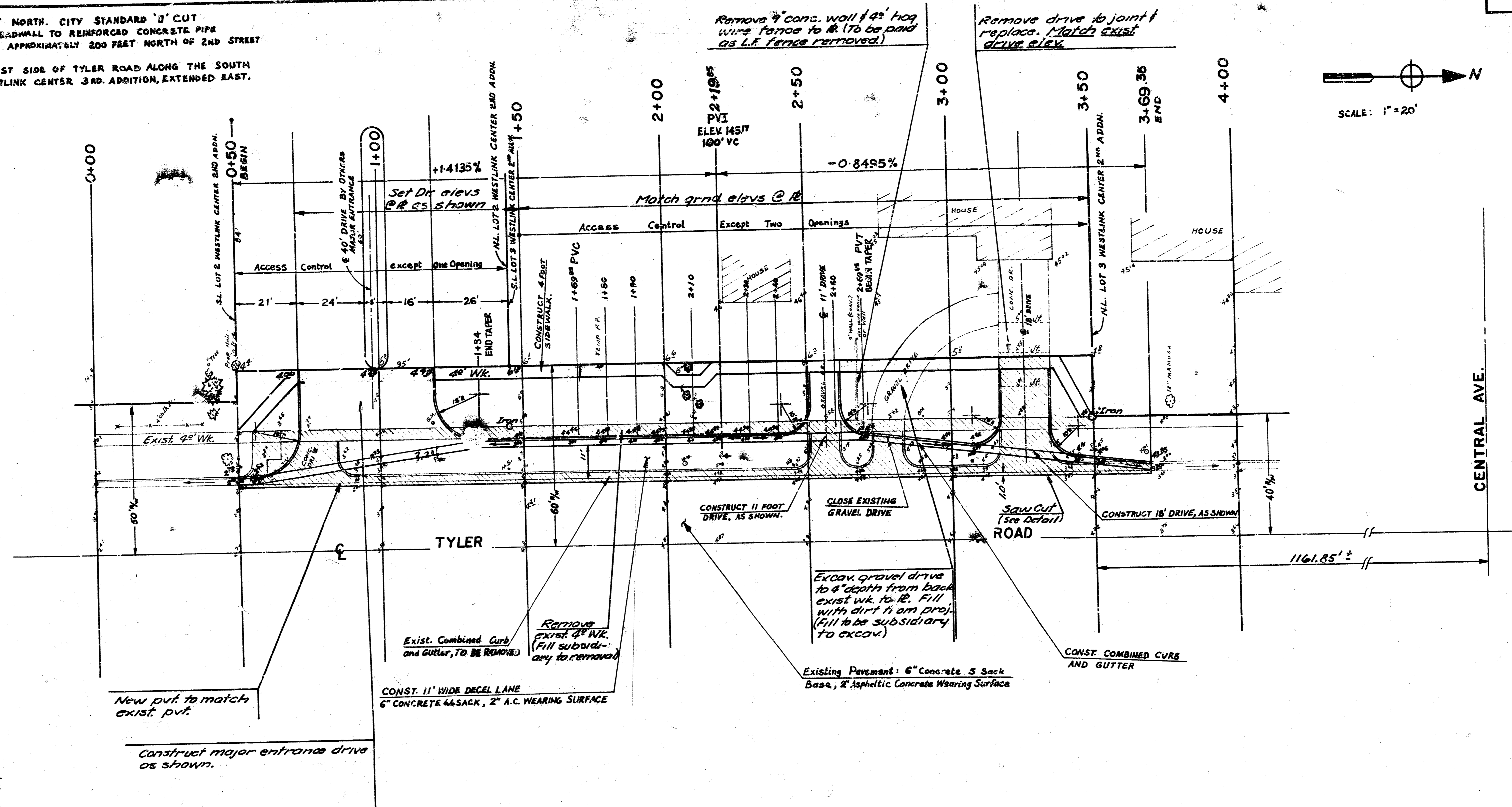
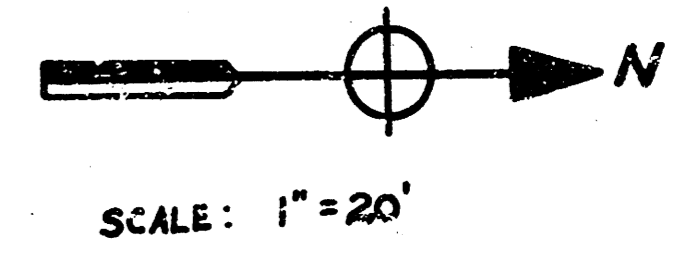


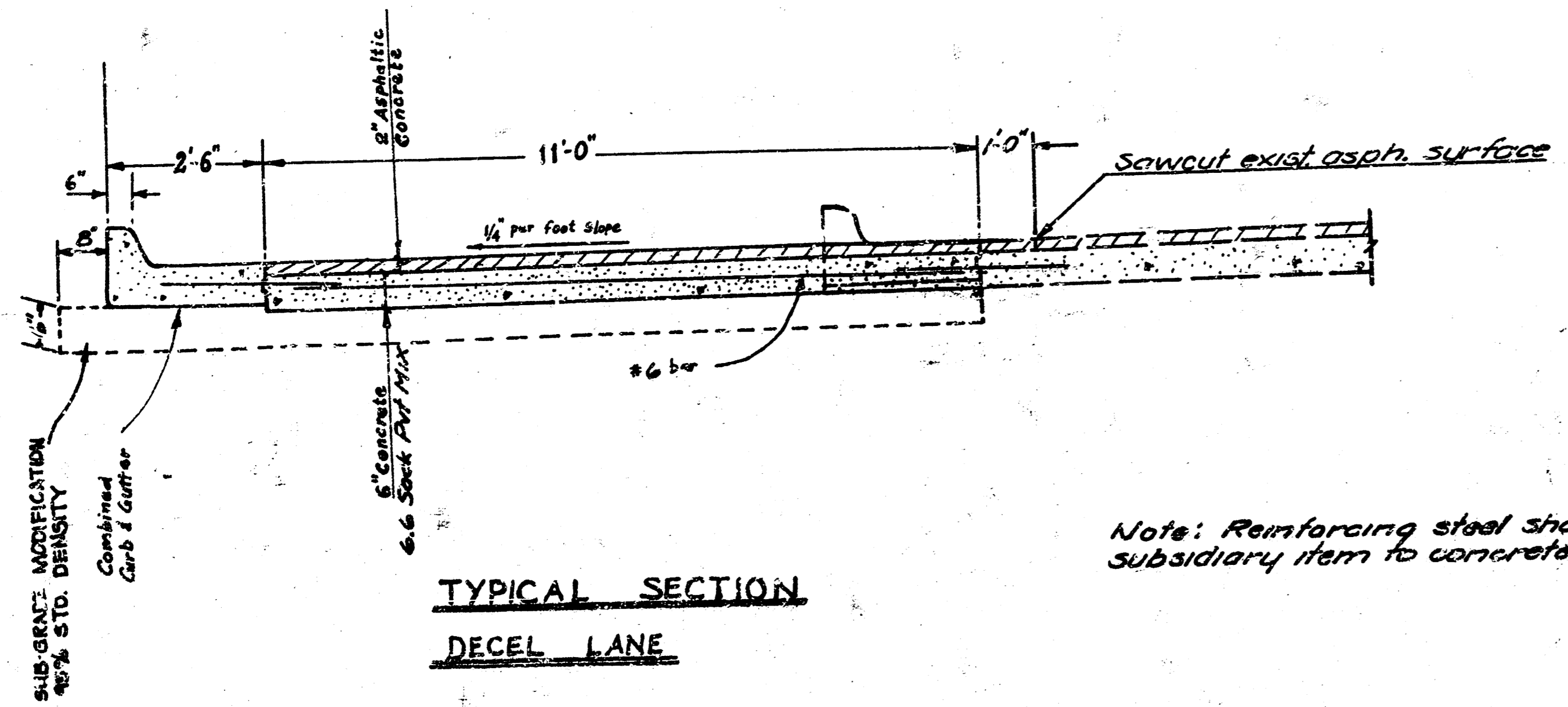
BENCH MARKS:

- 137-251 TYLER & 2ND STREET NORTH. CITY STANDARD 'D' CUT CENTER OF CONCRETE HEADWALL TO REINFORCED CONCRETE PIPE EAST SIDE TYLER AND APPROXIMATELY 200 FEET NORTH OF 2ND STREET
- 142-47 'D' BACK OF CURB EAST SIDE OF TYLER ROAD ALONG THE SOUTH LINE OF LOT 1, WESTLINK CENTER 3RD. ADDITION, EXTENDED EAST.

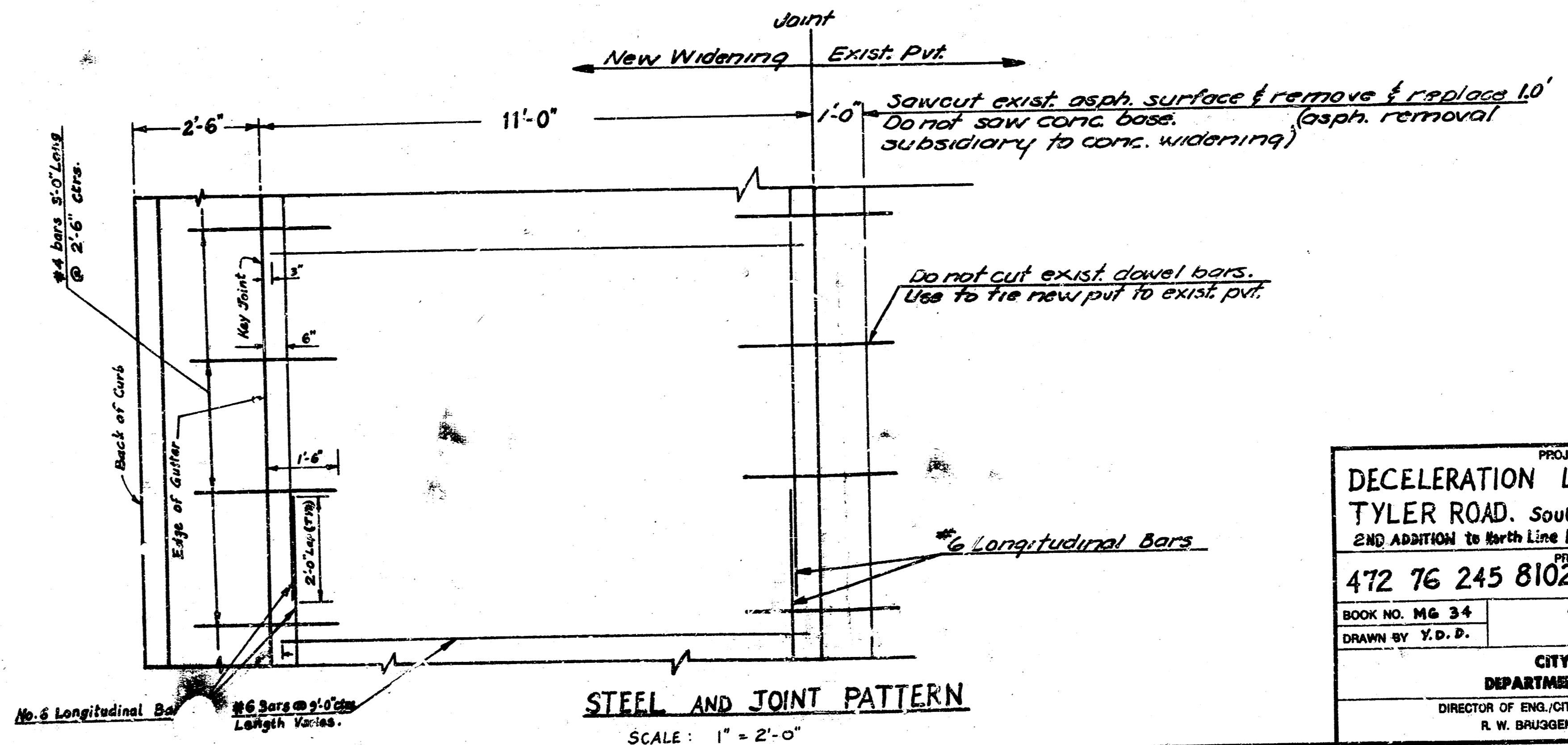


Total Earthwork

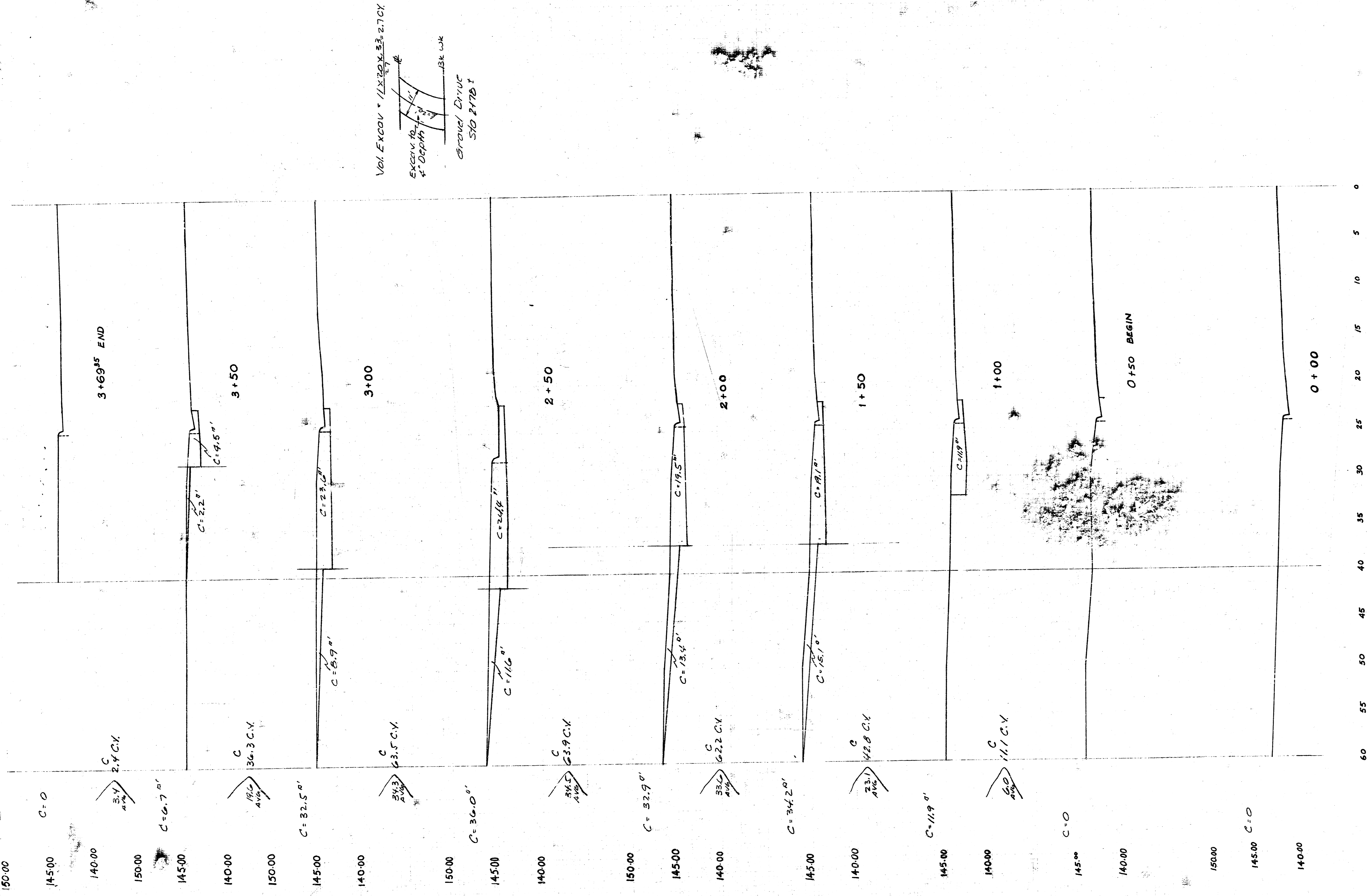
Excav.	CO. IR. FILL
284.9 C.Y.	65.7 cy
+10% 28.5	+10% 6.6
Total 313.4 C.Y.	TOTAL 72.3 cy



Note: Reinforcing steel shall be a subsidiary item to concrete widening.



PROJECT DESCRIPTION		
DECELERATION LANE, WEST SIDE		
TYLER ROAD, South Line LOT 2, WESTLINK CENTER		
2ND ADDITION to North Line LOT 3, WESTLINK CENTER 2ND ADDITION.		
PROJECT NUMBER		
472 76 245 81025 000 000 001		
BOOK NO. M6 34	APPROVED BY	DATE JULY 82
DRAWN BY Y.D.P.		REVISED
CITY OF WICHITA		
DEPARTMENT OF ENGINEERING		
DIRECTOR OF ENG./CITY ENGINEER		
R. W. BRUGGEMAN		



Vol. EXCAV = $11.2 \times 20 \times 33 = 2.7 \text{ CY}$
 EXCAV TO 4" DEPTH
 GRAVEL DRIVE
 510 217B

EARTHWORK TOTAL
 EXCAV
 284.9 C.Y.

0 5 10 15 20 25 30 35 40 45 50 55 60

DECELERATION LANE, WEST SIDE
 TYLER ROAD, South Line LOT 1, WESTLINK
 CENTER 3RD ADDITION to North Line LOT 3, WESTLINK
 CENTER 2ND ADDITION.
 PROJ. No. 472 76 245 81025 000.000.001
 CITY OF WICHITA, KANSAS
 DEPARTMENT OF ENGINEERING
 R. W. BRUGGEMAN DIRECTOR OF ENGINEERING/CITY ENGINEER