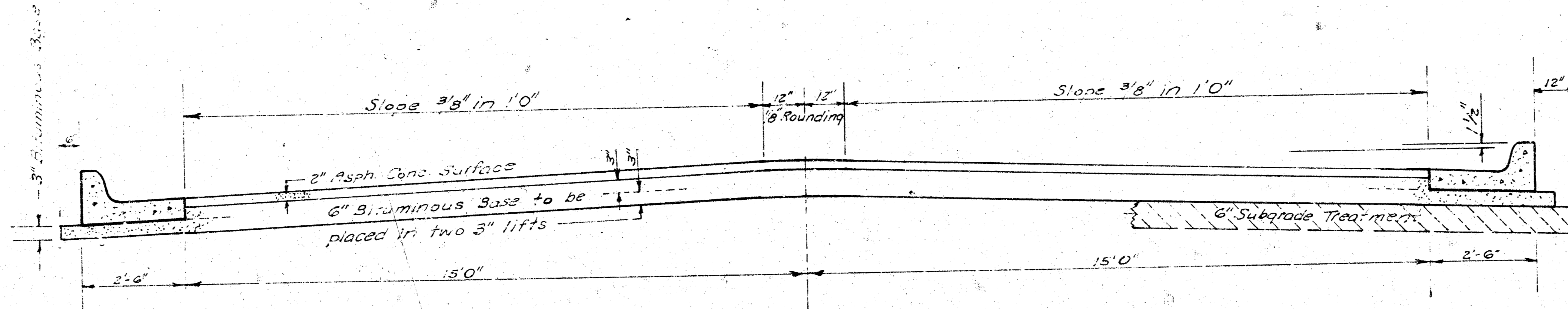


WOOD COURT

E. L. WOOD DRIVE To & INCL CUL-DE-SAC



TYPICAL SECTION

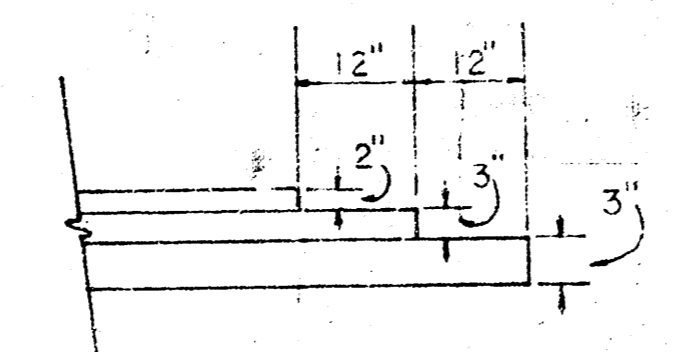
35' ASPHALTIC CONCRETE PAVEMENT WITH BITUMINOUS BASE

A TACK COAT OF EMULSIFIED ASPHALT (SS-1H) SHALL BE APPLIED AT AN APPROXIMATE RATE OF 0.35 GALLONS PER SQ YD BETWEEN LIFTS OF ASPHALTIC MATERIALS WHEN ORDERED BY THE ENGINEER. TACK COAT WILL NOT BE PAID FOR DIRECTLY AND SHALL BE CONSIDERED AS SUBSIDIARY TO PRICE BID FOR ASPHALTIC PAVEMENT.

BITUMINOUS BASE AND ASPHALTIC CONCRETE WEARING SURFACE SHALL BE PLACED WITH A LAYDOWN MACHINE HAVING AUTOMATIC ELECTRONIC CONTROLS FOR CROWN AND GRADE. CONSTRUCTION JOINTS IN EACH LIFT SHALL BE STAGGERED A MINIMUM DISTANCE OF 1' WITH JOINTS IN PRECEDING LIFTS AND PLACED SUCH THAT A JOINT WILL BE CONSTRUCTED ON THE CENTERLINE IN THE TOP LIFT.

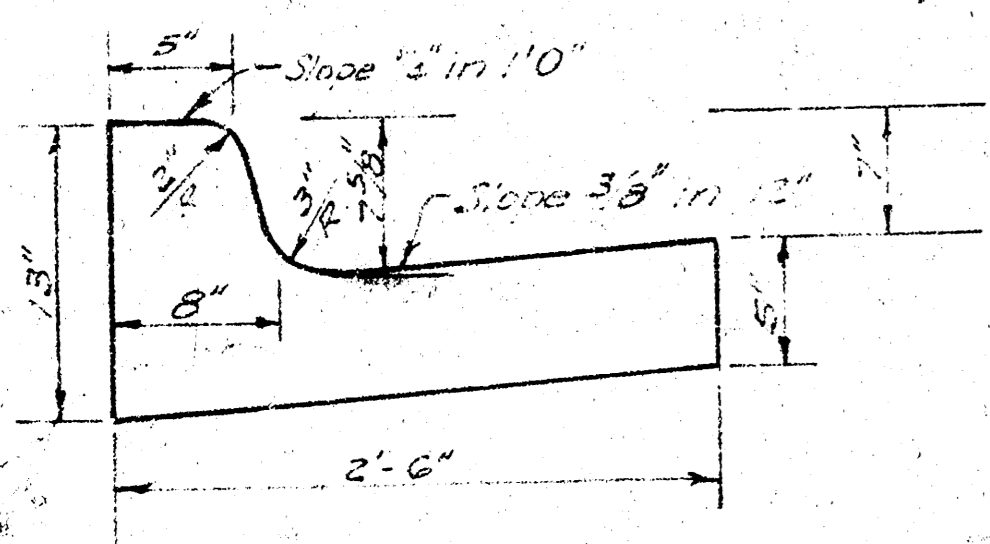
*The A.C. Pavement between the comb curb & gutter shall be paid as Sq.Yds. B" A.C. Pavement (6" Bituminous Base).
The Bituminous Base under the comb curb & gutter shall be paid as Sq.Yds. 3" Bituminous Base.*

DETAIL OF TRANSVERSE CONSTRUCTION JOINTS

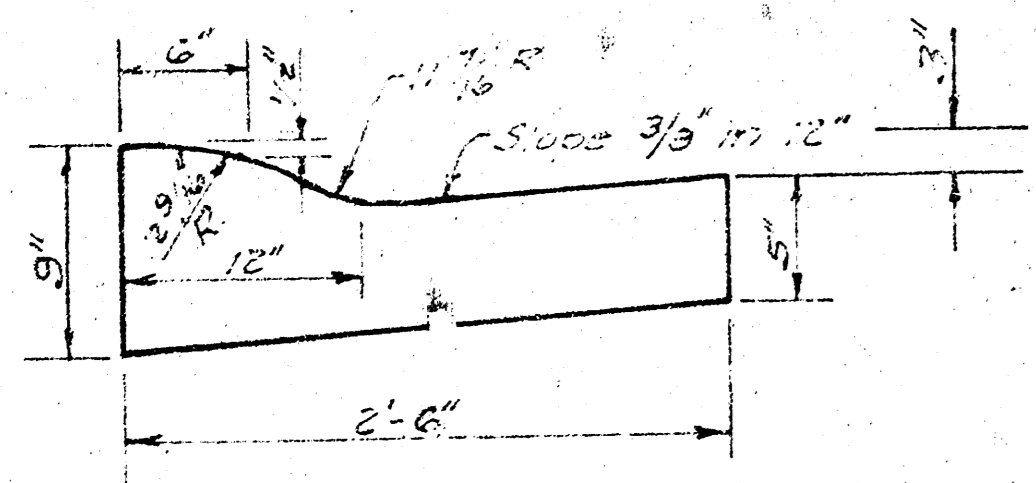


TRANSVERSE CONSTRUCTION JOINTS SHALL BE CONSTRUCTED IN FLEXIBLE BASE PAVEMENTS AT LOCATIONS WHERE PAVEMENT TEMPORARILY ENDS TO FACILITATE FUTURE PAVEMENT CONSTRUCTION AS SHOWN BY DETAIL. THE COST OF CONSTRUCTING THE TRANSVERSE CONSTRUCTION JOINTS SHALL NOT BE MEASURED OR PAID FOR DIRECTLY BUT SHALL BE INCLUDED IN THE BID PRICE FOR SQUARE YARDS OF ASPHALTIC CONCRETE PAVEMENT.

COMBINED CURB & GUTTER



ROLL TYPE CURB & GUTTER



CITY OF WICHITA KANSAS

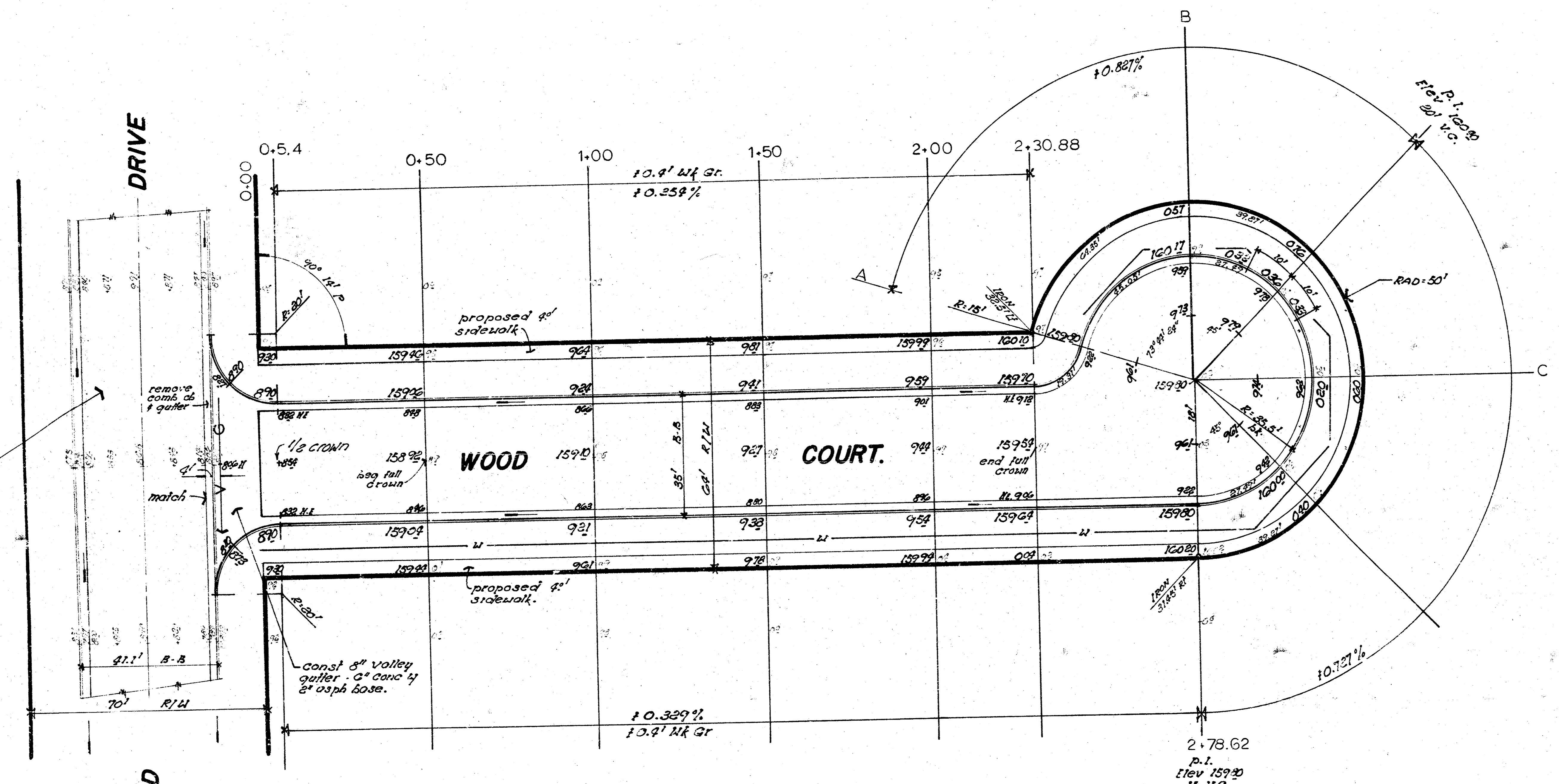
DEPARTMENT of PUBLIC WORKS - Engineering
Division

R. W. LINN CITY ENGINEER

DATE _____ Proj No. DAKS 574060

1
3

S.M. 15275 S.E. Cor Gene porch of Ho. # 9110 NANTUCKET.



Existing 9' asph
roadway base of
hearing surface.

NOTE: Contractor to coordinate
gas line installation with ARKLA
GAS Co.

NOTE TO FIELD ENGINEER & CONTRACTOR
Grade points and elevations for 4' sidewalk, compact 4' in thick as shown to be constructed by contractor.

TYPE OF CURB OR SIDEWALK SHALL BE DETERMINED BY THE FIELD ENGINEER. THE GRADE TREATMENT SHALL BE AS SHOWN. MODIFICATION, OR ANY CHANGE THEREIN, SHALL BE MADE BY THE FIELD ENGINEER.

"EARTHWORK"		
"PROPERTY"		"CITY"
EXCAVATION	Comp Fill	EXCAVATION
155.7 cu yds	0.1 cu yds	40.3 cu yds
110% 75.0	110% 0.1	110% 4.0
831.3 cu yds	6.7 cu yds	44.3 cu yds

2
3

WOOD COURT
E.L. WOOD DR to & incl Cul-De-Sac
CITY of WICHITA, KANSAS
(35'-6" Bituminous base-2" asph conc wearing surface by comb Cb & Gtr.)
R.W. LINN — CITY ENGINEER
Date: Proj. No. DAKS574060

FILMED FROM THE BEST AVAILABLE COPY