

PARKRIDGE

FROM THE SOUTH LINE OF BELLA VISTA AND THE SOUTHERLY LINE OF LOT 39, BLOCK 1, WOODBRIDGE 2ND ADDITION TO THE NORTHERLY LINE OF LOT 10, BLOCK 1, WOODBRIDGE 5TH ADDITION AND THE SOUTHERLY LINE OF LOT 38, BLOCK 1, WOODBRIDGE 2ND ADDITION.

BELLA VISTA

FROM THE WEST LINE OF LOT 2, BLOCK 1 AND THE WEST LINE OF LOT 33, BLOCK 2, WOODBRIDGE 5TH ADDITION TO THE WEST LINE OF PARKRIDGE.

CHAMBERS CIRCLE

FROM THE SOUTH LINE OF BELLA VISTA TO AND INCLUDING CUL-DE-SAC SERVING LOTS 6 THROUGH 26 INCLUSIVE, BLOCK 2, WOODBRIDGE 5TH ADDITION.

CITY OF WICHITA, KANSAS

M. E. LINDEBAK CITY ENGINEER

CITY PROJECT NO. 472-76-245-81702-000-000-001
INDEX NO. 761338

NOTES:

- CONTRACTOR WILL BE REQUIRED TO PROVIDE A MINIMUM ADVANCE NOTICE OF TWENTY-FOUR (24) HOURS TO UTILITY COMPANIES PRIOR TO STARTING ANY EXCAVATION AS FOLLOWS:

KANSAS ONE-CALL	687-2470
THE CONTRACTOR MUST NOTIFY THE FOLLOWING IN CASE OF AN EMERGENCY:	
CABLEVISION	262-4270 OR 263-2064
K.P. & L. GAS SERVICE COMPANY	263-7511
KANSAS GAS & ELECTRIC	264-1141
ARKLA GAS COMPANY	942-8350 OR 263-8161
SOUTHWESTERN BELL TELEPHONE COMPANY	1-571-2611
CITY OF WICHITA WATER DEPT.	268-4908
CITY OF WICHITA SEWER MAINTENANCE	268-4071

- INTERURBAN TRAFFIC GENERATED OUTSIDE THE PROJECT AREA IS NOT TO BE CARRIED THROUGH CONSTRUCTION.
 - EXISTING UTILITIES AND THEIR LOCATION, AS SHOWN ON THE PLANS, REPRESENT THE BEST INFORMATION OBTAINABLE FOR DESIGN. THE CONTRACTOR WILL BE REQUIRED TO WORK AROUND EXISTING UTILITIES WITHIN THE RIGHT-OF-WAY WHICH DO NOT CONFLICT WITH PROPOSED CONSTRUCTION.
 - RUBBLE FROM THE REMOVAL OF MISCELLANEOUS STRUCTURES AND EXCAVATION WHICH IS TO BE WASTED SHALL BE DISPOSED OF ON SITES TO BE PROVIDED BY THE CONTRACTOR. THESE SITES SHALL BE APPROVED BY THE ENGINEER AS TO SUITABILITY, APPEARANCE AND SITE LOCATION. LOCATIONS THAT, IN THE OPINION OF THE ENGINEER, WILL LEAVE AN URSIGHTLY APPEARANCE WILL NOT BE APPROVED.
- ALL DISPOSAL SITES MUST BE APPROVED BY THE KANSAS DEPARTMENT OF HEALTH AND ENVIRONMENT. MATERIAL EITHER STOCKPILED OR DISPOSED OF IN A FLOOD PLAIN WOULD REQUIRE A KANSAS STATE BOARD OF AGRICULTURE PERMIT. ANY MATERIAL DUMPED IN WATERS OF THE UNITED STATES OR WETLANDS IS SUBJECT TO U.S. CORPS OF ENGINEERS PERMITTING REGULATIONS. ANY MATERIAL BURIED TO STOCKPILE BEYOND APPROVED CONSTRUCTION LIMITS WOULD REQUIRE ADDITIONAL ARCHAEOLOGICAL INVESTIGATIONS UNLESS BURIED IN A PREVIOUSLY APPROVED BORROW LOCATION.
- THIS PROJECT DOES NOT INCLUDE ANY PROVISIONS FOR CONSTRUCTION OF DRIVEWAYS.
 - LIMITS OF EARTHWORK SHALL MATCH EXISTING GROUND ELEVATIONS AT THE RIGHT-OF-WAY LINE UNLESS OTHERWISE NOTED ON THE PLANS WITH A NEW FINISHED GRADE ELEVATION. WHEN A NEW FINISHED GRADE ELEVATION IS SHOWN, THE EARTHWORK SHALL EXTEND ONE FOOT BEYOND THE RIGHT-OF-WAY LINE AND THEN SLOPED UP OR DOWN USING PERMISSIBLE SLOPES TO MATCH THE EXISTING GROUND SURFACE.
 - CONTRACTOR SHALL GIVE THE OWNER OF PROPERTY ADJUTING THIS PROJECT, WHOSE YARDS WILL BE LONGER THAN THE NEW FINISHED GRADE ELEVATIONS AT THE RIGHT-OF-WAY LINE, AN OPPORTUNITY TO UTILIZE EXCESS EXCAVATED MATERIAL FROM THE PROJECT TO REGRADE THOSE YARDS TO DRAIN TO THE NEW PAVEMENT. CONTRACTOR WILL BE REQUIRED TO GRAB AND SPREAD THE EXCESS MATERIAL AS REQUIRED BY THE SPECIFICATIONS WHEN REQUESTED BY THE PROPERTY OWNER. THE CONTRACTOR SHALL BE FURNISHED A WRITTEN REQUEST FROM THE PROPERTY OWNER BEFORE ANY SUCH EXCESS MATERIAL IS DELIVERED TO SUCH PROPERTIES.
 - THE CONTRACTOR SHALL BID BOTH ALTERNATE TYPES OF SUBGRADE TREATMENT. THE TYPE OF TREATMENT TO BE USED SHALL BE AS DETERMINED BY THE ENGINEER AT THE TIME OF CONSTRUCTION.
 - THE CONTRACTOR SHALL BE RESPONSIBLE FOR PRESERVING PROPERTY IRONS. THE CONTRACTOR WILL BE REQUIRED TO RE-ESTABLISH ANY PROPERTY IRONS WHICH ARE DAMAGED OR DESTROYED BY HIS CONSTRUCTION OPERATIONS. SUCH IRONS SHALL BE RE-ESTABLISHED BY A LICENSED LAND SURVEYOR IN ACCORDANCE WITH STATE LAWS.
 - THE WATER DEPARTMENT SHALL FIELD LOCATE WATER VALVES ONE TIME DURING CONSTRUCTION WHEN REQUESTED BY THE CONTRACTOR. IT SHALL BE THE CONTRACTOR'S RESPONSIBILITY TO PRESERVE SUCH FIELD LOCATIONS DURING THE CONSTRUCTION PROCESS. WATER VALVES, WATER VALVE BOXES OR FIRE HYDRANTS DAMAGED DURING CONSTRUCTION SHALL BE REPAIRED BY THE CONTRACTOR AT HIS OWN EXPENSE.
 - THE CONTRACTOR SHALL ADJUST WATER VALVE BOXES AS DIRECTED BY THE ENGINEER. THIS WORK TO BE SUBSIDIARY TO OTHER BID ITEMS.
 - INLET HOOKUPS SHALL BE BID PER EACH REGARDLESS OF INLET SIZE.
 - EARTH WORK IS BASED ON THE FULL DEPTH ASPHALT PAVING ALTERNATE. ANY DIFFERENCE IN EARTH WORK FOR ALTERNATE 1, SHALL BE SUBSIDIARY TO THE CRUSHED ROCK BASE.

NOTE: Portions of the streets in this project to be constructed with roll-type curb. Top of curb elevations given are for full height curb.

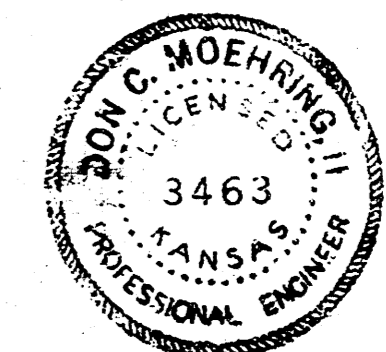
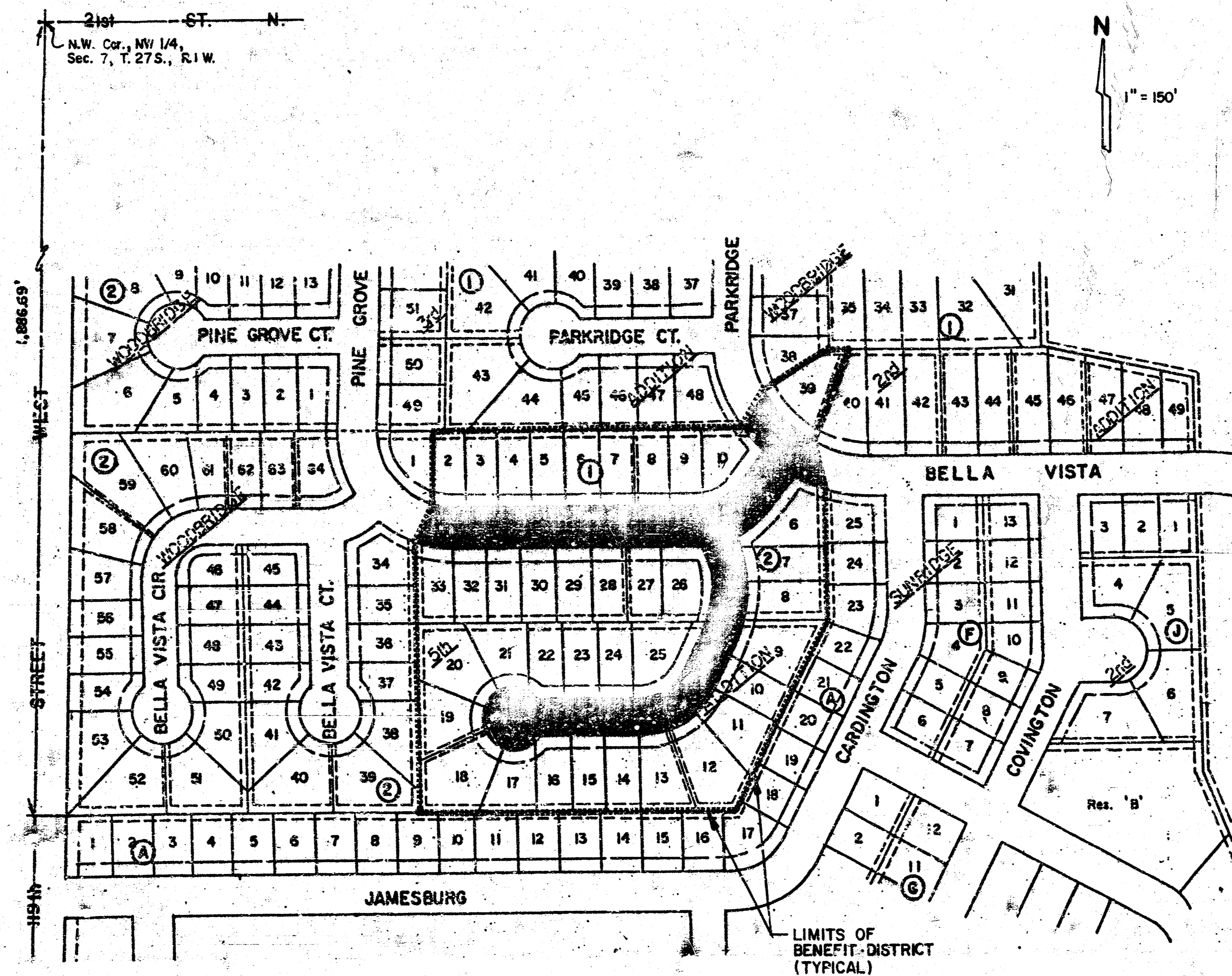
EARTHWORK QUANTITIES
EXCAVATION = 1,919.5 C.Y.
TOTAL PROJECT LENGTH = 1,417.20 L.F. (H.E.-H.E.)

INDEX OF SHEETS

- Cover Sheet
- Recorded Plat - Woodbridge 5th Addition
- Typical 37' Pavement Standards
- Typical 35' Pavement Standards
- Typical 29' Pavement Standards
- Bella Vista Plans
- Bella Vista/Parkridge Plans
- Chambers Circle Plans
- Cross Sections

BENCHMARKS

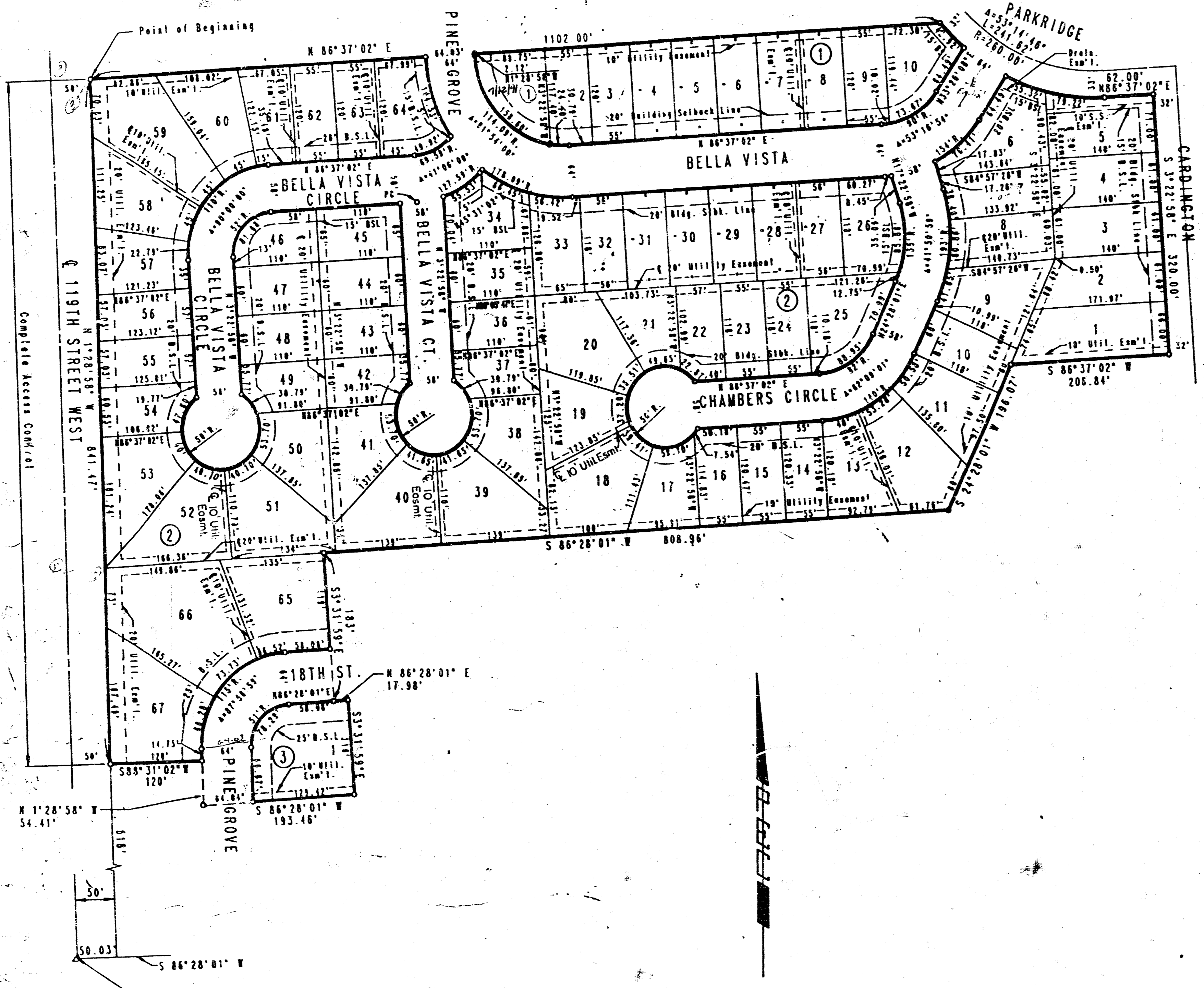
- City Disc - 79' South and 46' East of N.W. Cor., NW 1/4, Sec. 7, T. 27 S., R. 1 W.
Elev. = 172.08 City Datum
- "□" on top of curb, N. end return (NW Cor.) Bella Vista and Bella Vista Circle.
Elev. = 165.37 City Datum
- "□" on top of curb, S. end return (SW Cor.) Parkridge and Parkridge Court.
Elev. = 160.69 City Datum
- "□" on RCBC, N. end E. Wingwall, S. side Bella Vista.
Elev. = 159.74 City Datum



MOEHRING & ASSOCIATES
CONSULTING ENGINEERS
WICHITA

C-2 7-35

WOODBIDGE 5TH ADDITION TO WICHITA, SEDGWICK COUNTY, KANSAS



SCALE: 1" = 100'
o = IRON SET

BENCH MARK - CHISELED "O" AT N.E. COR. OF HEADWALL,
120 FEET WEST OF INTERSECTION 21ST ST.
AND WAIZE ROAD.
ELEV. = 1351.065 M.S.L.
R.S.L. = BUILDING SETBACK LINE
S.S. = SANITARY SEWER

STATE OF KANSAS)
COUNTY OF SEDGWICK) SS

I, JAMES R. BECKETT, A REGISTERED LAND SURVEYOR IN AFORESAID STATE AND COUNTY, DO HEREBY CERTIFY THAT ON THIS 13th DAY OF August, 1987, I HAVE CAUSED TO BE SURVEYED AND PLATTED WOODBRIDGE 5TH ADDITION TO WICHITA, SEDGWICK COUNTY, KANSAS, INTO LOTS, BLOCKS, AND STREETS THE SAME BEING A TRACT OF LAND IN THE NW 1/4 OF SECTION 7, T27S R1W, OF THE 6TH PM, DESCRIBED AS BEING A REPLAT OF LOTS 1 THROUGH 16 IN BLOCK 8, ALL OF BLOCK 7, THE NORTH 0.05 FEET OF LOTS 23, 24 AND 25 IN BLOCK 8 AND ALL OF LOTS 26 THROUGH 47 IN BLOCK 8, LOTS 1 THROUGH 4 AND PART OF LOT 5 IN BLOCK 9, TOGETHER WITH THOSE STREETS BETWEEN BLOCKS 6 AND 7, BLOCKS 7 AND 8, AND BETWEEN BLOCKS 7, 8 AND 9 THE ABOVE DESCRIBED LOTS, ALL IN ECHO HILLS 2ND ADDITION TO WICHITA, SEDGWICK COUNTY, KANSAS; ALSO, REPLAT OF LOTS 1, 2 AND 3, BLOCK 1; LOT 4, BLOCK 3, AND LOT 1, BLOCK 4, AND THOSE PORTIONS OF PINE GROVE STREET AND 18TH STREET ADJUTING SAID LOTS ALL IN COUNTRY VILLAGE ADDITION TO WICHITA, SEDGWICK COUNTY, KANSAS, MORE PARTICULARLY DESCRIBED AS: BEGINNING AT THE NW CORNER OF LOT 1, BLOCK 8, ECHO HILLS 2ND ADDITION TO WICHITA, SEDGWICK COUNTY, KANSAS, SAME POINT ALSO BEING THE SW CORNER OF LOT 4, BLOCK 2, WOODBRIDGE 3RD ADDITION TO WICHITA, SEDGWICK COUNTY, KANSAS; THENCE ALONG THE SOUTH LINE OF SAID BLOCK 2 AND ALONG THE SOUTH LINE OF BLOCK 1 IN SAID ADDITION, BEARING N06°37'02"E, A DISTANCE OF 1192.00 FEET TO THE SE CORNER OF SAID BLOCK 1 AND TO A POINT IN A CURVE TO THE LEFT HAVING A RADIUS OF 260.00 FEET AND A CHORD OF 233.02 FEET BEARING S68°45'33"E, THENCE ALONG SAID CURVE THROUGH A CENTRAL ANGLE OF 53°14'48" AN ARC DISTANCE OF 241.32 FEET; THENCE BEARING N48°37'02"E A DISTANCE OF 82.00 FEET TO A POINT IN THE WEST LINE OF CARBINGTON STREET; THENCE BEARING S3°22'58"E ALONG SAID WEST LINE A DISTANCE OF 320.00 FEET TO THE NE CORNER OF LOT 20, BLOCK 4, COUNTRY VILLAGE ADDITION; THENCE BEARING S88°37'02"W ALONG THE NORTH LINE OF LOTS 1 & 2 IN SAID BLOCK 4, A DISTANCE OF 206.84 FEET; THENCE BEARING S24°28'01"W ALONG THE WEST LINE OF LOTS 18 & 19 IN SAID BLOCK 4 A DISTANCE OF 190.07 FEET; THENCE BEARING S66°28'01"W ALONG THE NORTH LINE OF LOTS 10, 9, 8, 7, 6, 5, 4, 3 AND 2 IN SAID BLOCK 4, A DISTANCE OF 808.98 FEET TO THE NW CORNER OF LOT 2, BLOCK 4, COUNTRY VILLAGE ADDITION TO WICHITA, SEDGWICK COUNTY, KANSAS; THENCE BEARING S3°31'59"E ALONG THE WEST LINE OF SAID LOT 2, A DISTANCE OF 183.00 FEET TO A POINT IN THE SOUTH LINE OF 18TH STREET; THENCE ALONG SAID SOUTH LINE BEARING N06°28'01"E A DISTANCE OF 17.98 FEET TO THE NE CORNER OF LOT 4, BLOCK 3, IN SAID COUNTRY VILLAGE ADDITION; THENCE BEARING S3°31'59"E A DISTANCE OF 110.00 FEET TO THE SE CORNER OF SAID LOT 4; THENCE BEARING S88°37'02"W ALONG THE SOUTH LINE OF SAID LOT 4 EXTENDED WEST A DISTANCE OF 193.46 FEET TO A POINT IN THE WEST LINE OF PINE GROVE STREET; THENCE ALONG SAID WEST LINE BEARING N12°28'58"W A DISTANCE OF 4.91 FEET TO THE W. CORNER OF LOT 4, BLOCK 1, IN SAID COUNTRY VILLAGE ADDITION; THENCE BEARING S88°37'02"W A DISTANCE OF 120.00 FEET TO NW CORNER OF SAID LOT 4, AND TO A POINT IN THE EAST LINE OF 18TH STREET WEST; THENCE BEARING N12°28'58"W ALONG SAID EAST LINE, PARALLEL TO AND 50.00 FEET EAST OF THE WEST LINE, NW 1/4 OF SAID SECTION 7, A DISTANCE OF 841.47 FEET TO THE POINT OF BEGINNING.

James R. Beckett
JAMES R. BECKETT RLS NO. 832



KNOW ALL MEN BY THESE PRESENTS THAT WE, THE UNDERSIGNED PROPERTY OWNERS OF THE LAND, AS ABOVE SET FORTH IN THE ENGINEER'S CERTIFICATE HAVE CAUSED THE LAND TO BE SURVEYED AND PLATTED INTO LOTS, BLOCKS AND STREETS THE SAME TO BE KNOWN AS WOODBRIDGE 5TH ADDITION TO WICHITA, SEDGWICK COUNTY, KANSAS. EASEMENTS AS INDICATED FOR THE CONSTRUCTION AND MAINTENANCE OF PUBLIC UTILITIES AND DRAINAGE ARE HEREBY GRANTED. THE STREETS ARE HEREBY DEDICATED TO AND FOR THE USE OF THE PUBLIC. ALL ADJUTERS' RIGHTS OF ACCESS TO AND FROM 18TH STREET WEST OVER AND ACROSS THE WEST LINE OF SAID PLAT ARE HEREBY GRANTED TO THE CITY OF WICHITA.

ALL PORTIONS OF ECHO HILLS 2ND ADDITION AND COUNTRY VILLAGE ADDITION TO WICHITA, SEDGWICK COUNTY, KANSAS, WITHIN THE ABOVE DESCRIBED TRACT OF LAND ARE HEREBY VACATED AND REPLATTED BY VIRTUE OF RSA 12-512(b) AMENDED.

SLAWSON INVESTMENT CORPORATION #906862

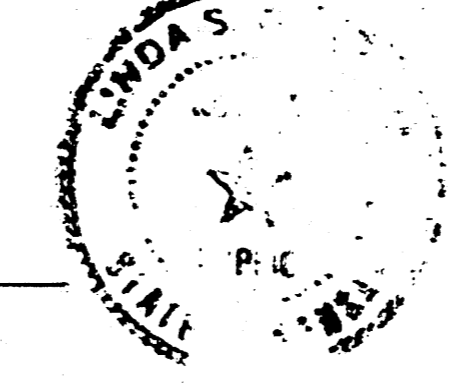
Larry D. Chambers
LARRY CHAMBERS VICE-PRESIDENT

STATE OF KANSAS)
COUNTY OF SEDGWICK) SS

BE IT REMEMBERED THAT ON THIS 14th DAY OF August, 1987, BEFORE ME, A NOTARY PUBLIC IN AFORESAID STATE AND COUNTY, CAME LARRY A. CHAMBERS, VICE-PRESIDENT OF SLAWSON INVESTMENT CORPORATION, TO ME PERSONALLY KNOWN TO BE THE SAME PERSON WHO EXECUTED THE FOREGOING INSTRUMENT OF WRITING AND DULY ACKNOWLEDGE THE EXECUTION OF SAME FOR AND ON BEHALF OF AS THE VOLUNTARY ACT AND DEED OF SAID COMPANY, IN TESTIMONY WHEREOF I HAVE HERETO SET MY HAND AND AFFIXED MY NOTARIAL SEAL THE DAY AND YEAR ABOVE WRITTEN.

Linda S. Abraham NOTARY PUBLIC

MY APPOINTMENT EXPIRES: 2-9-90



WE, THE MELLON BANK, N.A., PITTSBURGH, PA., HOLDER OF A MORTGAGE ON THE ABOVE DESCRIBED PROPERTY, DO HEREBY CONSENT TO THE PLATTING OF WOODBRIDGE 5TH ADDITION TO WICHITA, SEDGWICK COUNTY, KANSAS.

BY John E. Kalb VICE-PRESIDENT

STATE OF PENNSYLVANIA)
COUNTY OF ALLEGHENY) SS

BE IT REMEMBERED THAT ON THIS 10th DAY OF August, 1987, BEFORE ME, A NOTARY PUBLIC IN AFORESAID STATE AND COUNTY, CAME John E. Kalb OF THE MELLON BANK, N.A., PITTSBURGH, PA., TO ME PERSONALLY KNOWN TO BE THE SAME PERSON WHO EXECUTED THE FOREGOING INSTRUMENT OF WRITING AND DULY ACKNOWLEDGE THE EXECUTION OF SAME FOR AND ON BEHALF OF AS THE VOLUNTARY ACT AND DEED OF SAID BANK, IN TESTIMONY WHEREOF I HAVE HERETO SET MY HAND AND AFFIXED MY NOTARIAL SEAL THE DAY AND YEAR ABOVE WRITTEN.

Will N. Jurolsky NOTARY PUBLIC

MY APPOINTMENT EXPIRES: _____

THIS PLAT HAS BEEN SUBMITTED TO AND APPROVED BY THE WICHITA-SEDGWICK COUNTY METROPOLITAN AREA PLANNING COMMISSION, WICHITA, KANSAS, DATED THIS 9th DAY OF July, 1987.

Wayne Ellen Conlee VICE-CHAIRMAN
Wayne Ellen Conlee
Marvin S. Kroat SECRETARY
MARVIN S. KROAT



THIS PLAT APPROVED AND ALL DEDICATIONS SHOWN HEREON ARE ACCEPTED BY THE CITY COUNCIL OF THE CITY OF WICHITA, KANSAS, DATED THIS _____ DAY OF _____, 1987.

Robert C. Knight MAYOR
Dale E. Rea DEPUTY CITY CLERK
DALE E. REA

ENTERED ON TRANSFER RECORD THIS 14th DAY OF _____, 1987.

Don Wright COUNTY CLERK
DON WRIGHT

THIS IS TO CERTIFY THAT THIS INSTRUMENT WAS FILED FOR RECORD IN THE REGISTER OF DEEDS OFFICE AT 2:00 P.M. ON THIS 14th DAY OF SEPTEMBER, 1987.

Pat Kettler REGISTER OF DEEDS
PAT KETTLER

Ed Resa DEPUTY
ED RESA

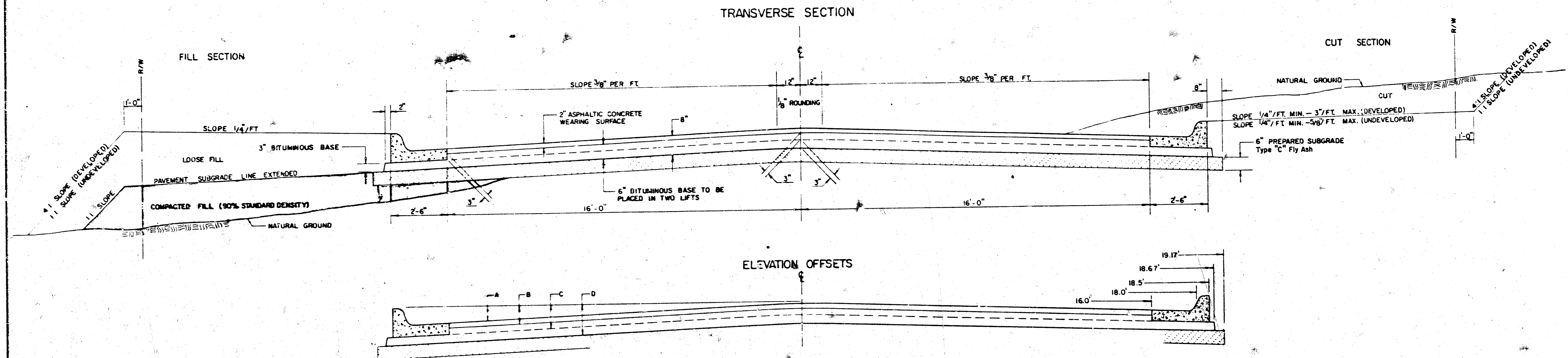
20.00

Register Consent F 918 28 12/17

C-2 7-35

148

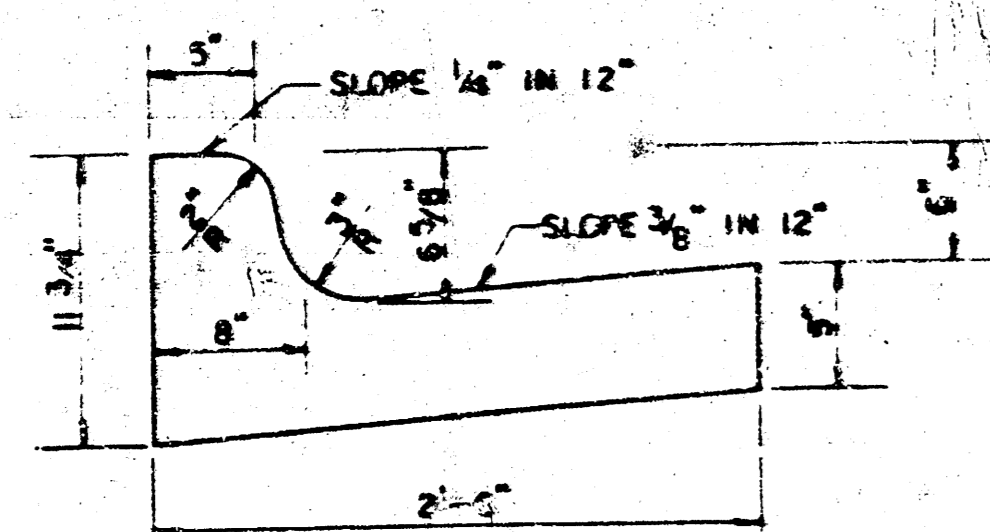
TYPICAL 37' PAVEMENT DETAILS



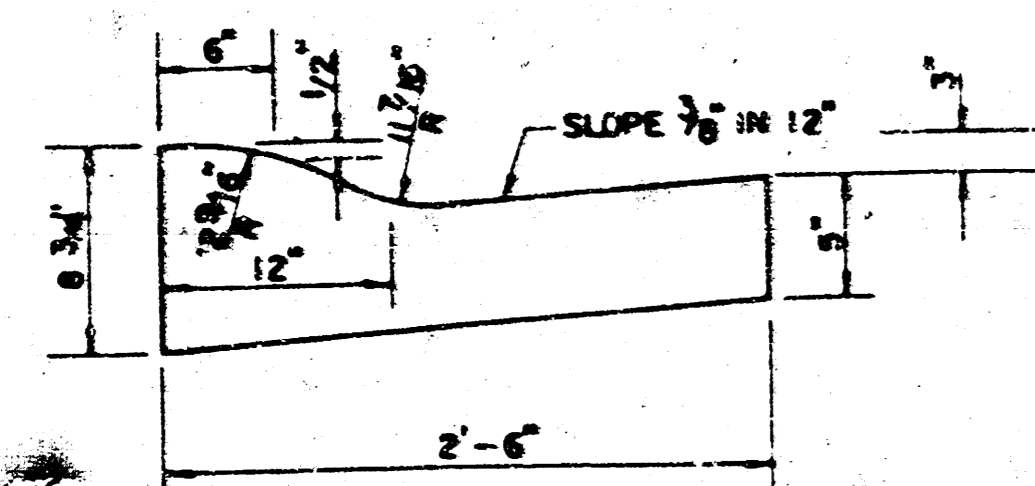
DISTANCE FROM CENTERLINE (LT. & RT.)

	0	2	4	6	8	10	12	14	16	18.5	18.67	19.17
A. TOP OF CURBS TO TOP OF SURFACE LIFT	.01	.05	.11	.18	.24	.30	.36	.43	.49	—	—	—
B. TOP OF CURBS TO TOP OF UPPER BASE LIFT	.17	.22	.28	.34	.40	.47	.53	.59	.65	—	—	—
C. TOP OF CURBS TO TOP OF LOWER BASE LIFT	.42	.47	.53	.59	.65	.72	.78	.84	.90	.97	.98	.99
D. TOP OF CURBS TO TOP OF SUBGRADE	.67	.72	.78	.84	.90	.97	1.03	1.09	1.15	1.22	1.23	1.24

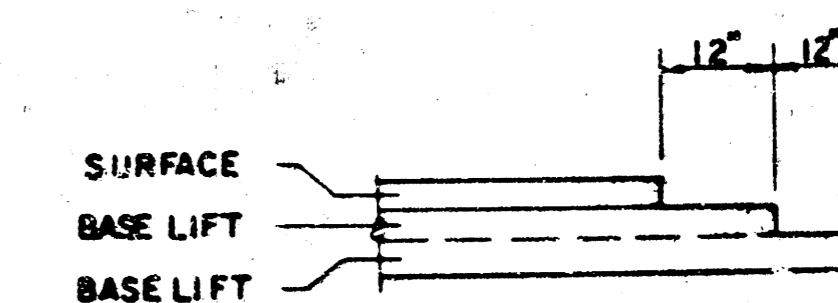
COMBINED CURB & GUTTER



ROLL TYPE COMBINED CURB & GUTTER



TRANSVERSE CONSTRUCTION JOINTS



TRANSVERSE CONSTRUCTION JOINTS SHALL BE CONSTRUCTED IN FLEXIBLE BASE PAVEMENTS AT LOCATIONS WHERE PAVEMENT JOINTS EXIST. FLEXIBLE BASE PAVEMENT AS SHOWN BY THE DETAIL. ALL COSTS ASSOCIATED WITH THE CONSTRUCTION OF THE TRANSVERSE JOINT SHALL BE INCLUDED IN THE BID PRICE FOR SQUARE YARDS OF 8\"/>

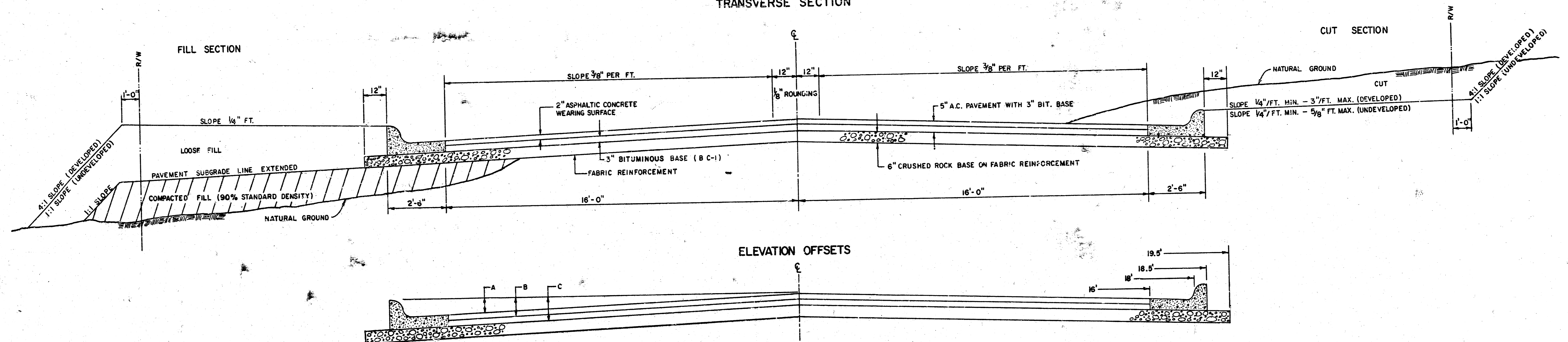
GENERAL NOTES

- 1) THE ASPHALTIC CONCRETE PAVEMENT BETWEEN THE COMBINED CURB AND GUTTER SHALL BE PAID AS SQUARE YARDS OF 8\"/>
- 2) THE BITUMINOUS BASE UNDER AND BEHIND THE COMBINED CURB AND GUTTER SHALL BE PAID AS SQUARE YARDS OF 3\"/>
- 3) A TACK COAT OF EMULSIFIED ASPHALT (SC-1H OR CSS-1H) SHALL BE APPLIED AT AN APPROXIMATE RATE OF 0.05 GALLONS PER SQUARE YARD BETWEEN EACH LIFT OF ASPHALTIC MATERIAL.
- 4) BITUMINOUS BASE AND ASPHALTIC CONCRETE WEARING SURFACE SHALL BE PLACED WITH A LAYDOWN MACHINE HAVING AUTOMATIC CONTROLS FOR LINE AND GRADE.
- 5) CONSTRUCTION JOINTS IN EACH LIFT SHALL BE STAGGERED A MINIMUM DISTANCE OF ONE (1) FOOT FROM JOINTS IN PRECEDING LIFTS AND PLACED SO THAT A JOINT WILL BE CONSTRUCTED ON THE CENTERLINE OF THE TOP LIFT.
- 6) CONTRACTOR TO BID ONLY ONE SUBGRADE TREATMENT ALTERNATE WHEN ALTERNATES ARE PROVIDED IN THE PROPOSAL AND CONTRACT. THE ALTERNATE CHOSEN BY THE SUCCESSFUL BIDDER SHALL BE USED IN CONSTRUCTING THIS PROJECT.

8 INCH RESIDENTIAL ASPHALTIC CONCRETE PAVEMENT WITH 6 INCH BITUMINOUS BASE
CITY OF WICHITA, KANSAS

TYPICAL 37' PAVEMENT DETAILS

TRANSVERSE SECTION

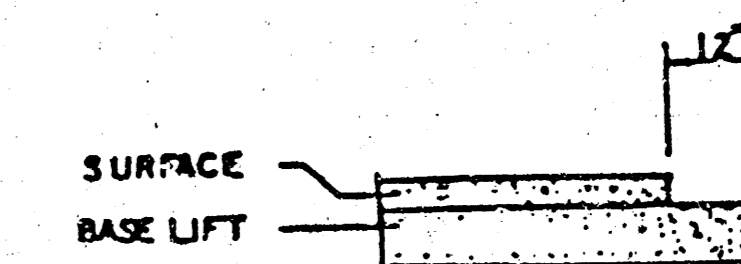


ELEVATION OFFSETS

	DISTANCE FROM CENTERLINE (LT. & RT.)										
	0	2	4	6	8	10	12	14	16	18	18.5
A: TOP OF CURBS TO TOP OF SURFACE LIFT	.01	.05	.11	.18	.24	.30	.36	.43	.49	—	—
B: TOP OF CURBS TO TOP OF UPPER BASE LIFT	.17	.22	.28	.34	.40	.47	.53	.59	.65	—	—
C: TOP OF CURBS TO TOP OF LOWER BASE LIFT	.42	.47	.53	.59	.65	.72	.78	.84	.90	.97	.98

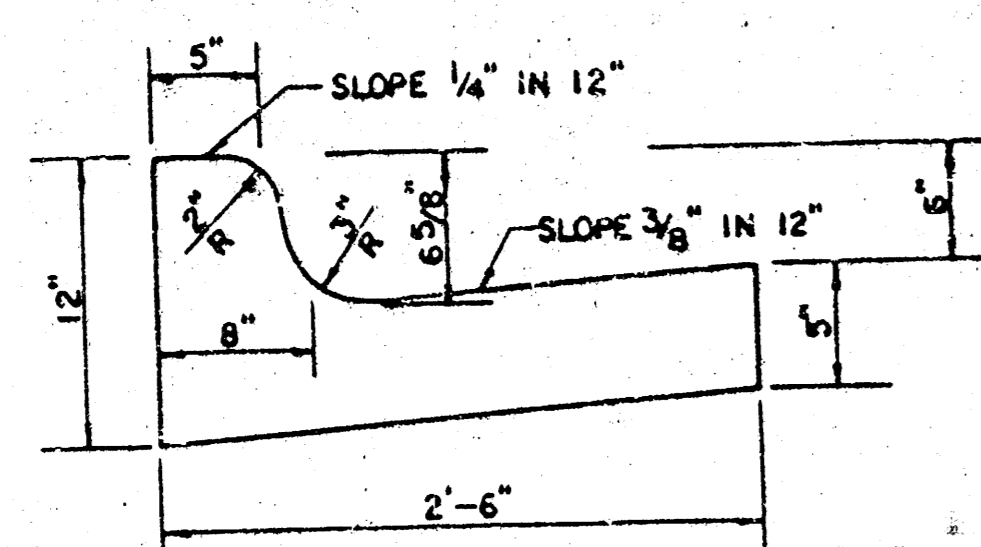
FABRIC BASE REINFORCEMENT SHALL BE B X 1100 GEOGRID AS MANUFACTURED BY TENSAR CORPORATION OR APPROVED EQUAL. FABRIC BASE REINFORCEMENT SHALL BE INSTALLED IN ACCORDANCE WITH MANUFACTURER'S RECOMMENDATIONS. CRUSHED ROCK SHALL BE UNIFORMLY GRADED FROM 1-1/2" MAXIMUM SIZE TO NOT MORE THAN 10% PASSING A No. 200 SIEVE. ROCK QUALITY SHALL BE THE SAME AS SPECIFIED FOR COARSE AGGREGATE FOR CONCRETE MIXES.

TRANSVERSE CONSTRUCTION JOINTS

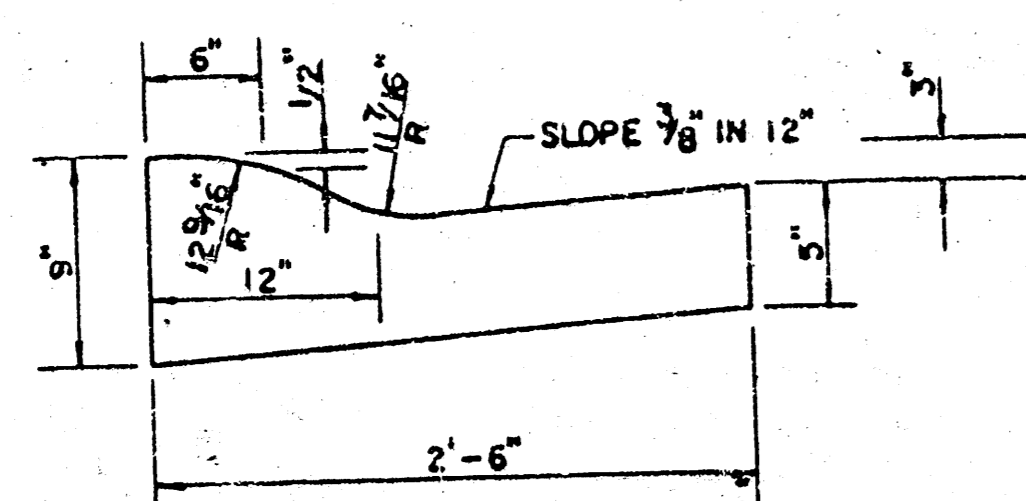


TRANSVERSE CONSTRUCTION JOINTS SHALL BE CONSTRUCTED IN FLEXIBLE BASE PAVEMENTS AT LOCATIONS WHERE PAVEMENT JOINTS EXISTING FLEXIBLE BASE PAVEMENT AS SHOWN BY THE DETAIL. ALL COSTS ASSOCIATED WITH THE CONSTRUCTION OF THE TRANSVERSE JOINT SHALL BE INCLUDED IN THE BID PRICE FOR SQUARE YARDS 5" ASPHALTIC CONCRETE PAVEMENT (3" BITUMINOUS BASE)

COMBINED CURB & GUTTER



ROLL TYPE COMBINED CURB & GUTTER



GENERAL NOTES

ROCK BASE IS TO BE COMPACTED AND SMOOTHED WITH A STEEL FACED ROLLER PRIOR TO PLACEMENT OF ASPHALT. TACK COAT WILL NOT BE APPLIED TO ROCK BASE.

A TACK COAT OF EMULSIFIED ASPHALT (SC-1H OR CSS-1H) SHALL BE APPLIED AT AN APPROPRIATE RATE OF 0.03 GALLONS PER SQUARE YARD BETWEEN EACH LIFT OF ASPHALTIC MATERIAL.

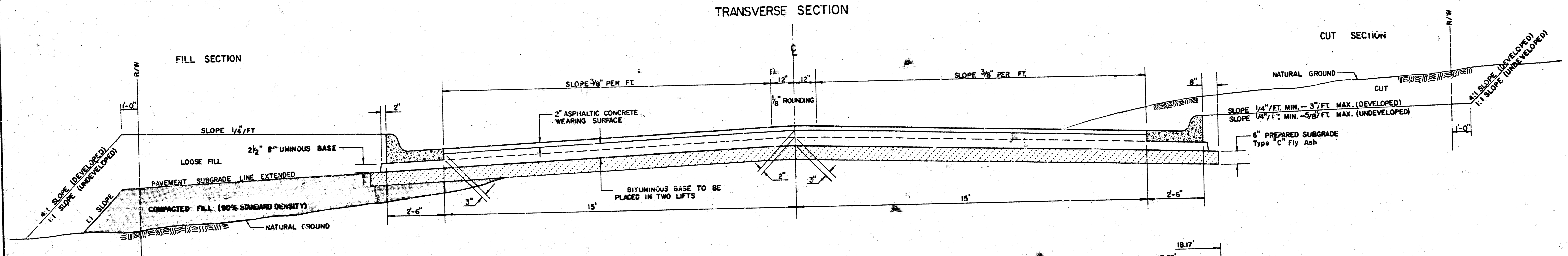
BITUMINOUS BASE AND ASPHALTIC CONCRETE WEARING SURFACE SHALL BE PLACED WITH A LAYDOWN MACHINE HAVING AUTOMATIC CONTROLS FOR LINE AND GRADE.

CONSTRUCTION JOINTS IN EACH LIFT SHALL BE STAGGERED A MAXIMUM DISTANCE OF ONE (1) FOOT FROM JOINTS IN PRECEDING LIFTS AND PLACED SO THAT A JOINT WILL BE CONSTRUCTED ON THE CENTERLINE OF THE TOP LIFT.

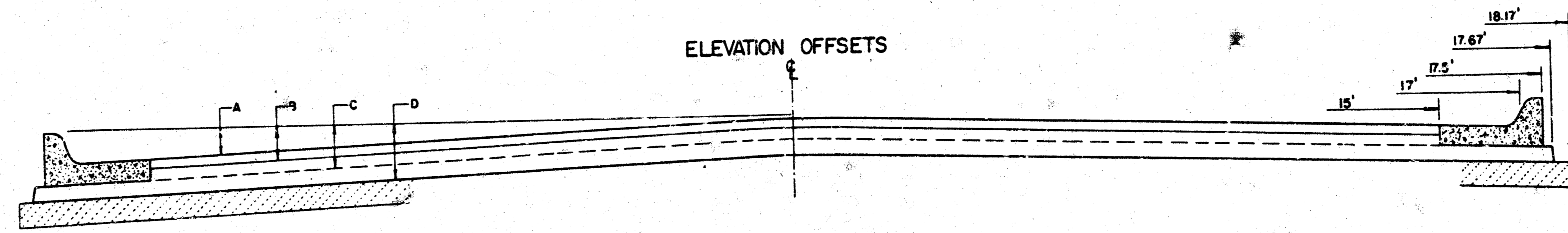
5 INCH RESIDENTIAL ASPHALTIC CONCRETE PAVEMENT WITH CRUSHED ROCK BASE ON FABRIC REINFORCEMENT

TYPICAL 35' PAVEMENT DETAILS

TRANSVERSE SECTION

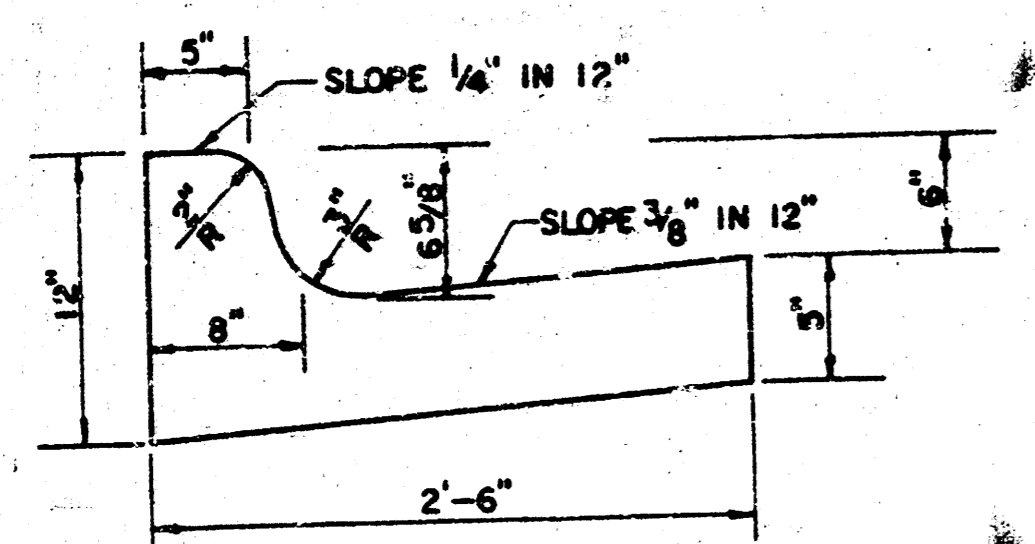


ELEVATION OFFSETS

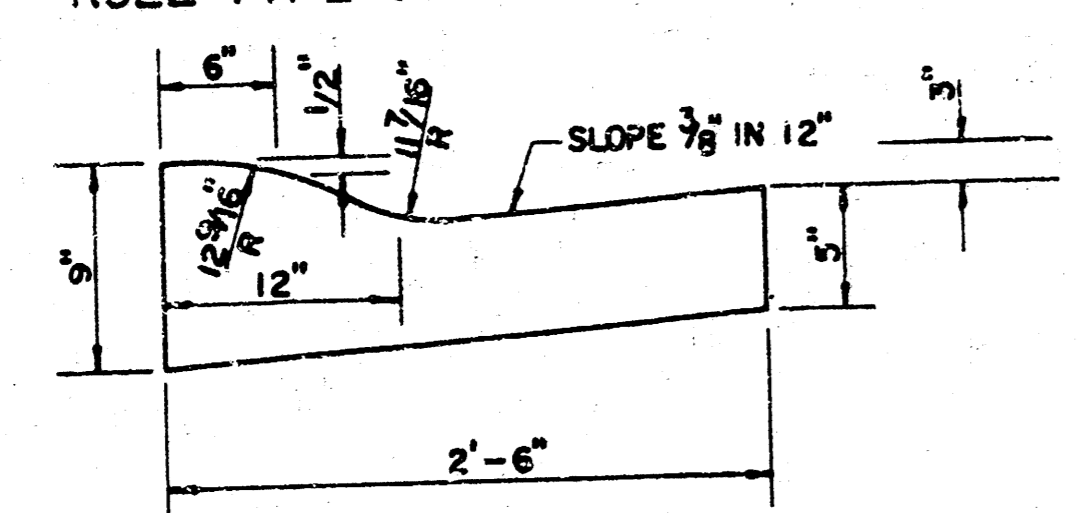


	DISTANCE FROM CENTERLINE (LT. & RT.)												
	0'	2'	4'	6'	8.5'	10'	12'	14'	15'	17'	17.5'	17.67'	18.17'
A: TOP OF CURBS TO TOP OF SURFACE LIFT	0.04	0.08	0.14	0.21	0.29	0.33	0.39	0.46	0.49	—	—	—	—
B: TOP OF CURBS TO TOP OF UPPER BASE LIFT	0.21	0.25	0.31	0.37	0.45	0.50	0.56	0.62	0.65	—	—	—	—
C: TOP OF CURBS TO TOP OF LOWER BASE LIFT	0.37	0.43	0.50	0.57	0.67	0.72	0.79	0.87	0.90	0.98	1.00	1.00	—
D: TOP OF CURBS TO TOP OF SUBGRADE	0.62	0.67	0.74	0.81	0.90	0.95	1.02	1.08	1.12	1.19	1.21	1.21	1.23

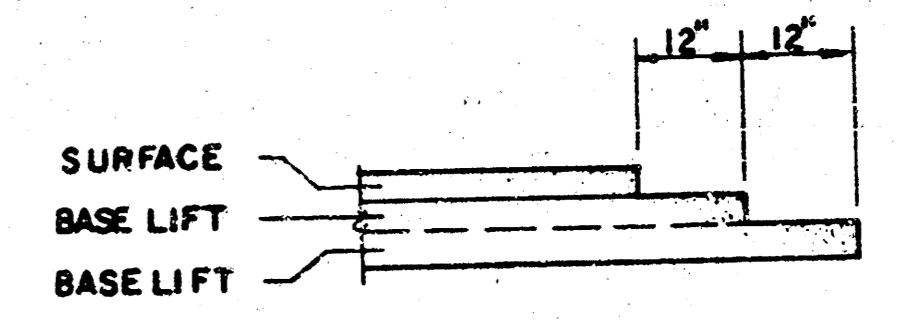
COMBINED CURB & GUTTER



ROLL TYPE COMBINED CURB & GUTTER



TRANSVERSE CONSTRUCTION JOINTS



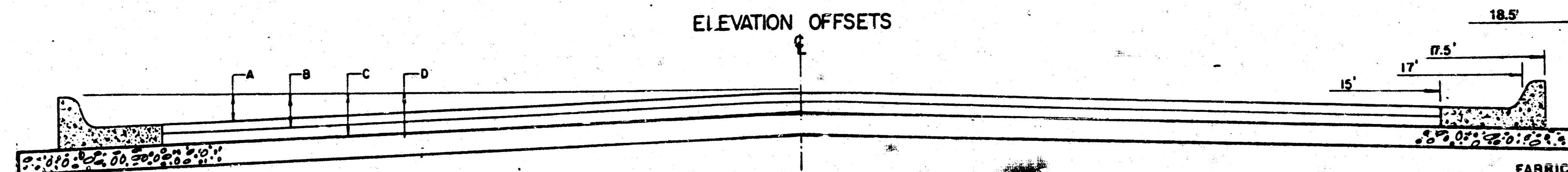
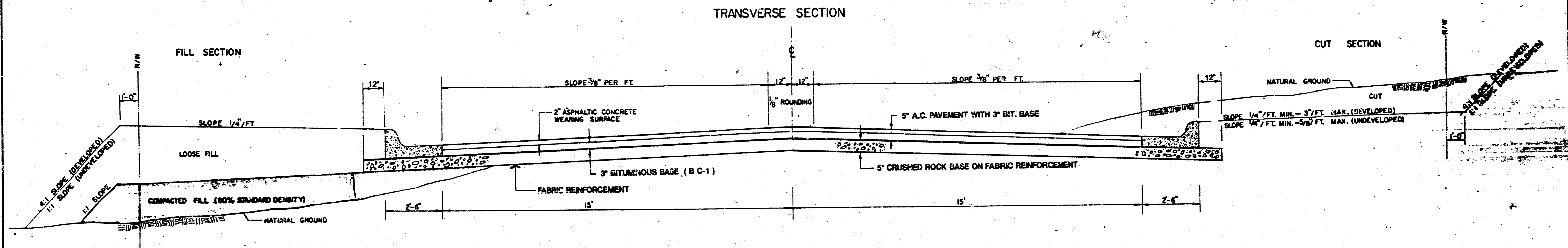
TRANSVERSE CONSTRUCTION JOINTS SHALL BE CONSTRUCTED IN FLEXIBLE BASE PAVEMENTS AT LOCATIONS WHERE PAVEMENT JOINS EXISTING FLEXIBLE BASE PAVEMENT AS SHOWN BY THE DETAIL. ALL COSTS ASSOCIATED WITH THE CONSTRUCTION OF THE TRANSVERSE JOINT SHALL BE INCLUDED IN THE BID PRICE FOR SQUARE YARDS 7" ASPHALTIC CONCRETE (5" BITUMINOUS BASE).

GENERAL NOTES

- 1) THE ASPHALTIC CONCRETE PAVEMENT BETWEEN THE COMBINED CURB AND GUTTER SHALL BE PAID AS SQUARE YARDS OF 7" ASPHALTIC CONCRETE (5" BITUMINOUS BASE).
- 2) THE BITUMINOUS BASE UNDER AND BEHIND THE COMBINED CURB AND GUTTER SHALL BE PAID AS SQUARE YARDS OF 2 1/2" BITUMINOUS BASE.
- 3) A TACK COAT OF EMULSIFIED ASPHALT (SC-1H OR CSS-1H) SHALL BE APPLIED AT AN APPROXIMATE RATE OF 0.05 GALLONS PER SQUARE YARD BETWEEN EACH LIFT OF ASPHALTIC MATERIAL.
- 4) BITUMINOUS BASE AND ASPHALTIC CONCRETE WEARING SURFACE SHALL BE PLACED WITH A LAYDOWN MACHINE HAVING AUTOMATIC CONTROLS FOR LINE AND GRADE.
- 5) CONSTRUCTION JOINTS IN EACH LIFT SHALL BE STAGGERED A MINIMUM DISTANCE OF ONE (1) FOOT FROM JOINTS IN PRECEDING LIFTS AND PLACED SO THAT A JOINT WILL BE CONSTRUCTED ON THE CENTERLINE OF THE TOP LIFT.
- 6) CONTRACTOR TO BID ONLY ONE SUBGRADE TREATMENT ALTERNATE WHEN ALTERNATES ARE PROVIDED IN THE PROPOSAL AND CONTRACT. THE ALTERNATE CHOSEN BY THE SUCCESSFUL BIDDER SHALL BE USED IN CONSTRUCTING THIS PROJECT.

7 INCH RESIDENTIAL ASPHALTIC CONCRETE PAVEMENT WITH 5 INCH BITUMINOUS BASE
CITY OF WICHITA, KANSAS
PROJECT NUMBER

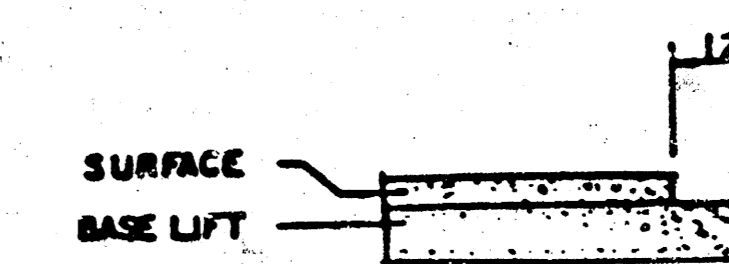
TYPICAL 35' PAVEMENT DETAILS



	DISTANCE FROM CENTERLINE (LT. & RT.)										
	0'	2'	4'	6'	8.5'	10'	12'	14'	15'	17'	17.5'
A: TOP OF CURBS TO TOP OF SURFACE LIFT	0.04	0.08	0.14	0.21	0.29	0.33	0.39	0.46	0.49	—	—
B: TOP OF CURBS TO TOP OF UPPER BASE LIFT	0.21	0.25	0.31	0.37	0.45	0.50	0.56	0.62	0.65	—	—
C: TOP OF CURBS TO TOP OF LOWER BASE LIFT	0.37	0.43	0.50	0.57	0.67	0.72	0.79	0.87	0.90	0.98	1.00
D: TOP OF CURBS TO TOP OF SUBGRADE											

FABRIC BASE REINFORCEMENT SHALL BE 8 X 1100 GEOGRID AS MANUFACTURED BY TENSAR CORPORATION OR APPROVED EQUAL. FABRIC BASE REINFORCEMENT SHALL BE INSTALLED IN ACCORDANCE WITH MANUFACTURER'S RECOMMENDATIONS. CRUSHED ROCK SHALL BE UNIFORMLY GRADED FROM 1-1/2" MAXIMUM SIZE TO NOT MORE THAN 10% PASSING A No. 200 SIEVE. ROCK QUALITY SHALL BE THE SAME AS SPECIFIED FOR COARSE AGGREGATE FOR CONCRETE MIXES.

TRANSVERSE CONSTRUCTION JOINTS



TRANSVERSE CONSTRUCTION JOINTS SHALL BE CONSTRUCTED IN FLEXIBLE BASE PAVEMENTS AT LOCATIONS WHERE PAVEMENT JOINTS EXISTING FLEXIBLE BASE PAVEMENT AS SHOWN BY THE DETAIL. ALL COSTS ASSOCIATED WITH THE CONSTRUCTION OF THE TRANSVERSE JOINT SHALL BE INCLUDED IN THE BID PRICE FOR SQUARE YARDS 5" ASPHALTIC CONCRETE PAVEMENT (3" BITUMINOUS BASE).

GENERAL NOTES

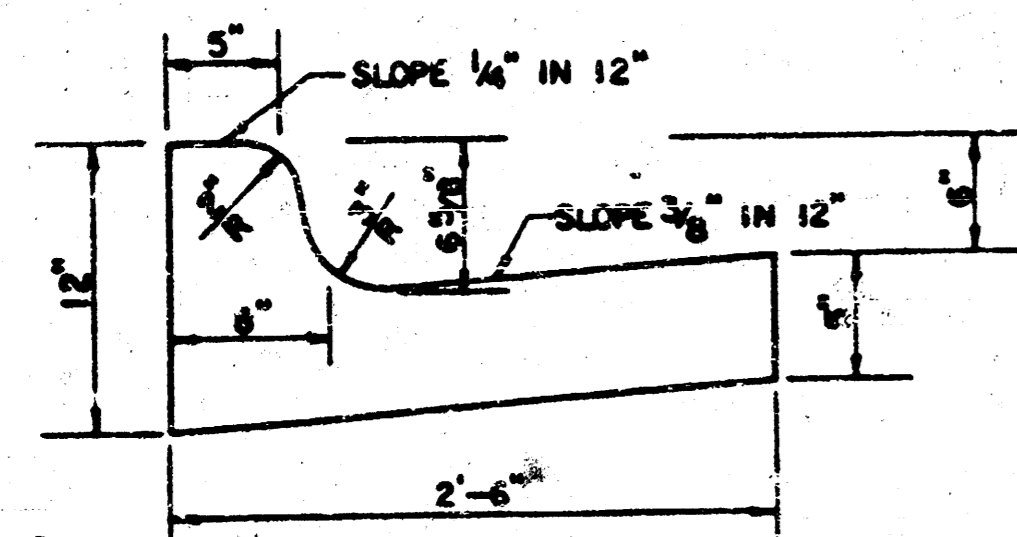
ROCK BASE IS TO BE COMPACTED AND SMOOTHED WITH A STEEL FACED ROLLER PRIOR TO PLACEMENT OF ASPHALT. TACK COAT WILL NOT BE APPLIED TO ROCK BASE.

A TACK COAT OF EMULSIFIED ASPHALT (SC-1H OR CSS-1H) SHALL BE APPLIED AT AN APPROXIMATE RATE OF 0.03 GALLONS PER SQUARE YARD BETWEEN EACH LIFT OF ASPHALTIC MATERIAL.

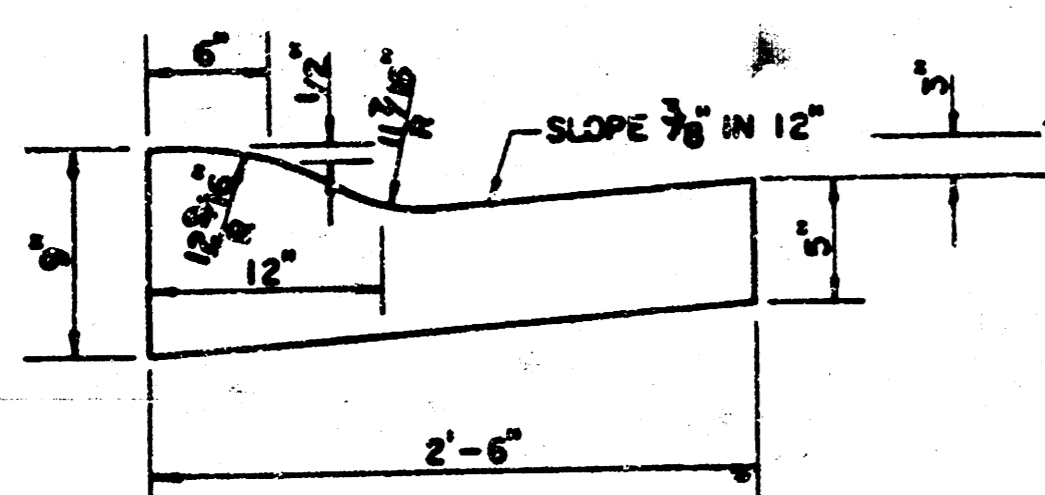
BITUMINOUS BASE AND ASPHALTIC CONCRETE WEARING SURFACE SHALL BE PLACED WITH A LAYDOWN MACHINE HAVING AUTOMATIC CONTROLS FOR LINE AND GRADE.

CONSTRUCTION JOINTS IN EACH LIFT SHALL BE STAGGERED A MINIMUM DISTANCE OF ONE (1) FOOT FROM JOINTS IN PRECEDING LIFTS AND PLACED SO THAT A JOINT WILL BE CONSTRUCTED ON THE CENTERLINE OF THE TOP LIFT.

COMBINED CURB & GUTTER



ROLL TYPE COMBINED CURB & GUTTER

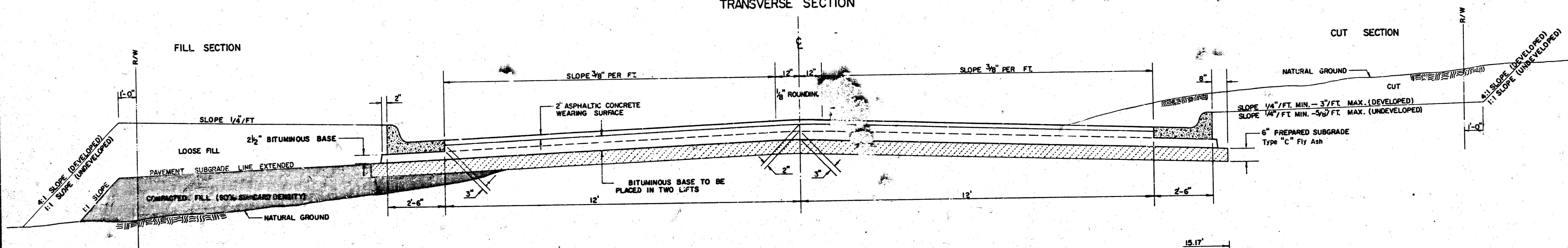


5" RESIDENTIAL ASPHALTIC CONCRETE PAVEMENT WITH CRUSHED ROCK BASE ON FABRIC REINFORCEMENT

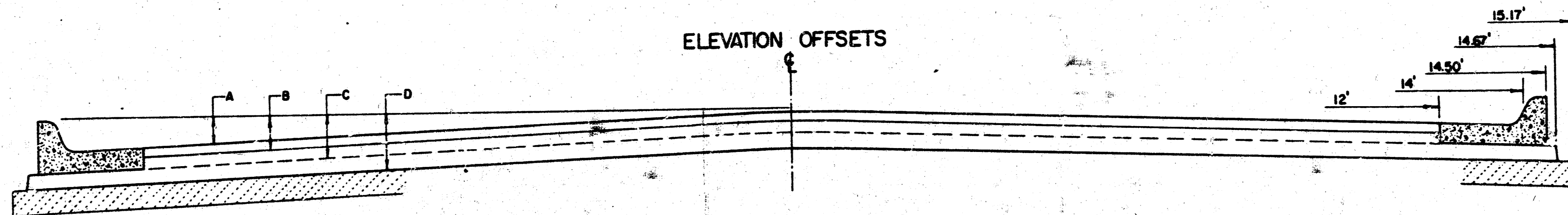
10 1 5 30

TYPICAL 29' PAVEMENT DETAILS

TRANSVERSE SECTION

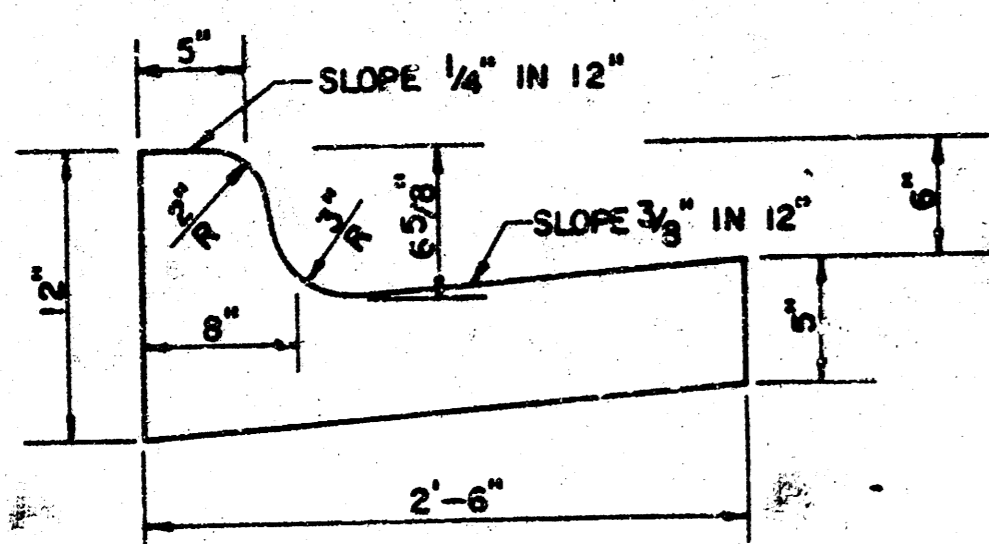


ELEVATION OFFSETS

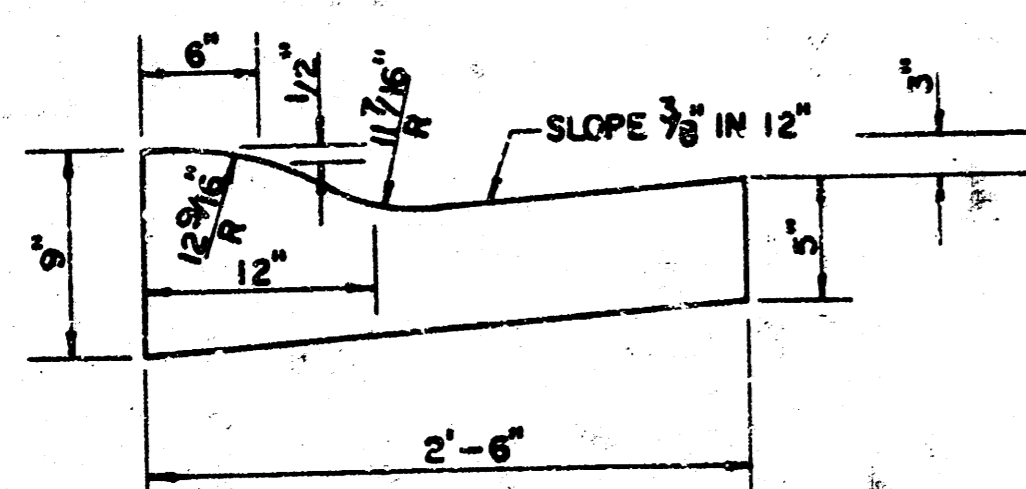


	DISTANCE FROM CENTERLINE (LT. & RT.)											
	0'	2'	4'	6'	7'	8'	10'	12'	14'	14.5'	14.67'	15.17'
A: TOP OF CURBS TO TOP OF SURFACE LIFT	0.13	0.18	0.24	0.30	0.33	0.36	0.43	0.49	—	—	—	—
B: TOP OF CURBS TO TOP OF UPPER BASE LIFT	0.30	0.35	0.41	0.47	0.50	0.53	0.60	0.66	—	—	—	—
C: TOP OF CURBS TO TOP OF LOWER BASE LIFT	0.47	0.52	0.60	0.66	0.71	0.75	0.83	0.90	0.98	1.00	1.01	—
D: TOP OF CURBS TO TOP OF SUBGRADE	0.72	0.77	0.84	0.91	0.94	0.98	1.05	1.12	1.19	1.21	1.21	1.23

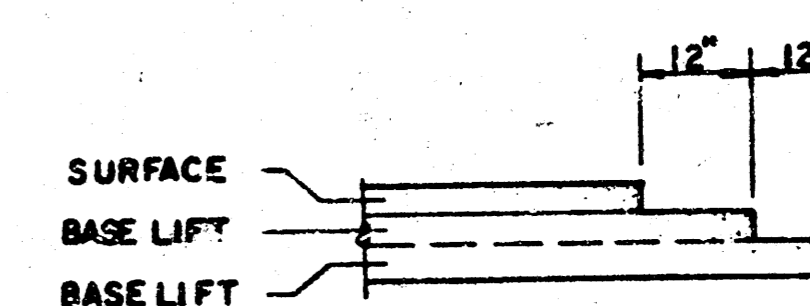
COMBINED CURB & GUTTER



ROLL TYPE COMBINED CURB & GUTTER



TRANSVERSE CONSTRUCTION JOINTS



TRANSVERSE CONSTRUCTION JOINTS SHALL BE CONSTRUCTED IN FLEXIBLE BASE PAVEMENTS AT LOCATIONS WHERE PAVEMENT JOINTS EXISTING FLEXIBLE BASE PAVEMENT AS SHOWN BY THE DETAIL. ALL COSTS ASSOCIATED WITH THE CONSTRUCTION OF THE TRANSVERSE JOINT SHALL BE INCLUDED IN THE BID PRICE FOR SQUARE YARDS 7" ASPHALTIC CONCRETE (5" BITUMINOUS BASE).

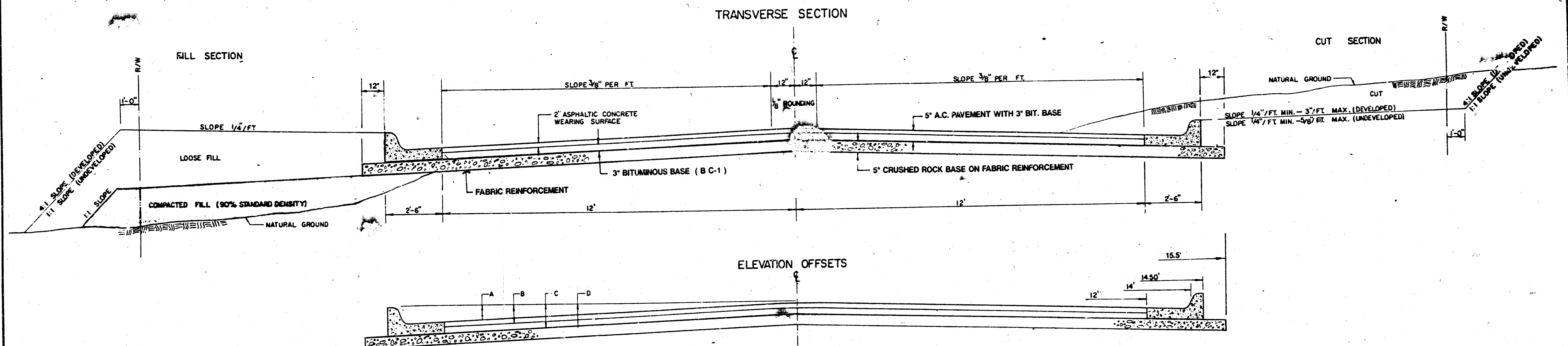
GENERAL NOTES

- 1) THE ASPHALTIC CONCRETE PAVEMENT BETWEEN THE COMBINED CURB AND GUTTER SHALL BE PAID AS SQUARE YARDS OF 7" ASPHALTIC CONCRETE (5" BITUMINOUS BASE).
- 2) THE BITUMINOUS BASE UNDER AND BEHIND THE COMBINED CURB AND GUTTER SHALL BE PAID AS SQUARE YARDS OF 2 1/2" BITUMINOUS BASE.
- 3) A TACK COAT OF EMULSIFIED ASPHALT (SC-1H OR CSS-1H) SHALL BE APPLIED AT AN APPROXIMATE RATE OF 0.05 GALLONS PER SQUARE YARD BETWEEN EACH LIFT OF ASPHALTIC MATERIAL.
- 4) BITUMINOUS BASE AND ASPHALTIC CONCRETE WEARING SURFACE SHALL BE PLACED WITH A LAYDOWN MACHINE HAVING AUTOMATIC CONTROLS FOR LINE AND GRADE.
- 5) CONSTRUCTION JOINTS IN EACH LIFT SHALL BE STAGGERED A MINIMUM DISTANCE OF ONE (1) FOOT FROM JOINTS IN PRECEDING LIFTS AND PLACED SO THAT A JOINT WILL BE CONSTRUCTED ON THE CENTERLINE OF THE TOP LIFT.
- 6) CONTRACTOR TO BID ONLY ONE SUBGRADE TREATMENT ALTERNATE WHEN ALTERNATES ARE PROVIDED IN THE PROPOSAL AND CONTRACT. THE ALTERNATE CHOSEN BY THE SUCCESSFUL BIDDER SHALL BE USED IN CONSTRUCTING THIS PROJECT.

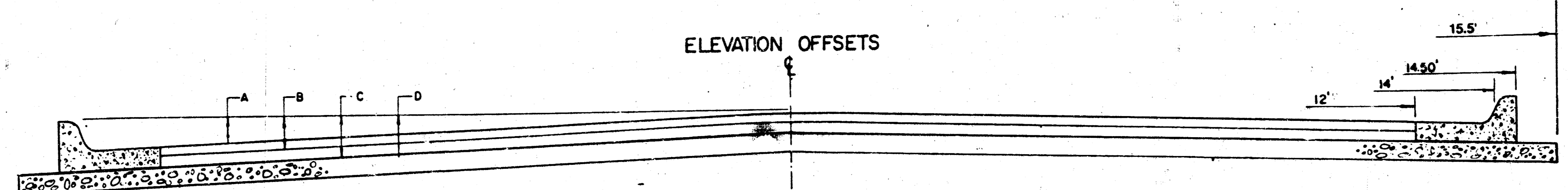
7 INCH RESIDENTIAL ASPHALTIC CONCRETE PAVEMENT WITH 5 INCH BITUMINOUS BASE
CITY OF WICHITA, KANSAS
PROJECT NUMBER

TYPICAL 29' PAVEMENT DETAILS

TRANSVERSE SECTION



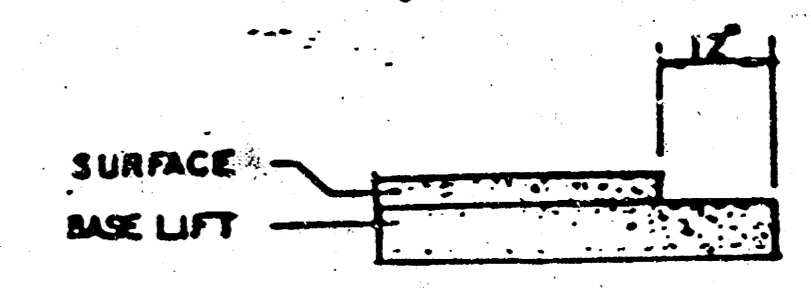
ELEVATION OFFSETS



	DISTANCE FROM CENTERLINE (LT. & RT.)										
	0'	2'	4'	6'	7'	8'	10'	12'	14'	14.5'	
A: TOP OF CURBS TO TOP OF SURFACE LIFT	0.13	0.18	0.24	0.30	0.33	0.36	0.43	0.49	—	—	—
B: TOP OF CURBS TO TOP OF UPPER BASE LIFT	0.30	0.35	0.41	0.47	0.50	0.53	0.60	0.66	—	—	—
C: TOP OF CURBS TO TOP OF LOWER BASE LIFT	0.47	0.52	0.60	0.68	0.71	0.75	0.83	0.90	0.98	1.00	—
D: TOP OF CURBS TO TOP OF SUBGRADE											

FABRIC BASE REINFORCEMENT SHALL BE 8x1100 GEOGRID AS MANUFACTURED BY TENSAR CORPORATION OR APPROVED EQUAL. FABRIC REINFORCEMENT SHALL BE INSTALLED IN ACCORDANCE WITH MANUFACTURER'S RECOMMENDATIONS. CRUSHED ROCK SHALL BE UNIFORMLY GRADED FROM 1-1/2" MAXIMUM SIZE TO NOT MORE THAN 10% PASSING A No. 200 SIEVE. ROCK QUALITY SHALL BE THE SAME AS SPECIFIED FOR COARSE AGGREGATE FOR CONCRETE CURBS.

TRANSVERSE CONSTRUCTION JOINTS

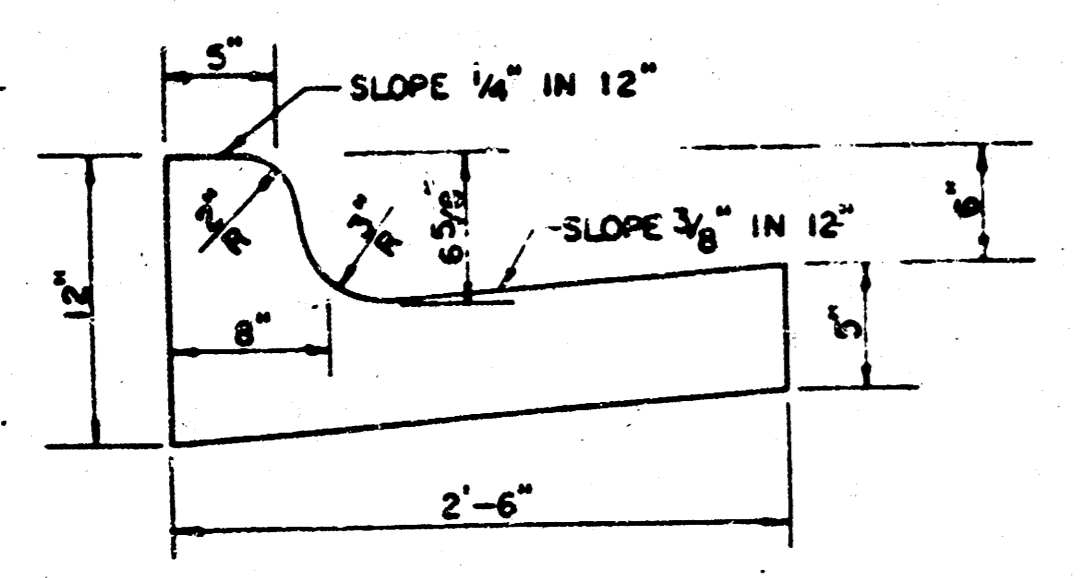


TRANSVERSE CONSTRUCTION JOINTS SHALL BE CONSTRUCTED IN FLEXIBLE BASE PAVEMENTS AT LOCATIONS WHERE PAVEMENT JOINTS EXISTING FLEXIBLE BASE PAVEMENT AS SHOWN BY THE DETAIL. ALL COSTS ASSOCIATED WITH THE CONSTRUCTION OF THE TRANSVERSE JOINT SHALL BE INCLUDED IN THE BID PRICE FOR SQUARE YARDS 5" ASPHALTIC CONCRETE PAVEMENT (3" BITUMINOUS BASE)

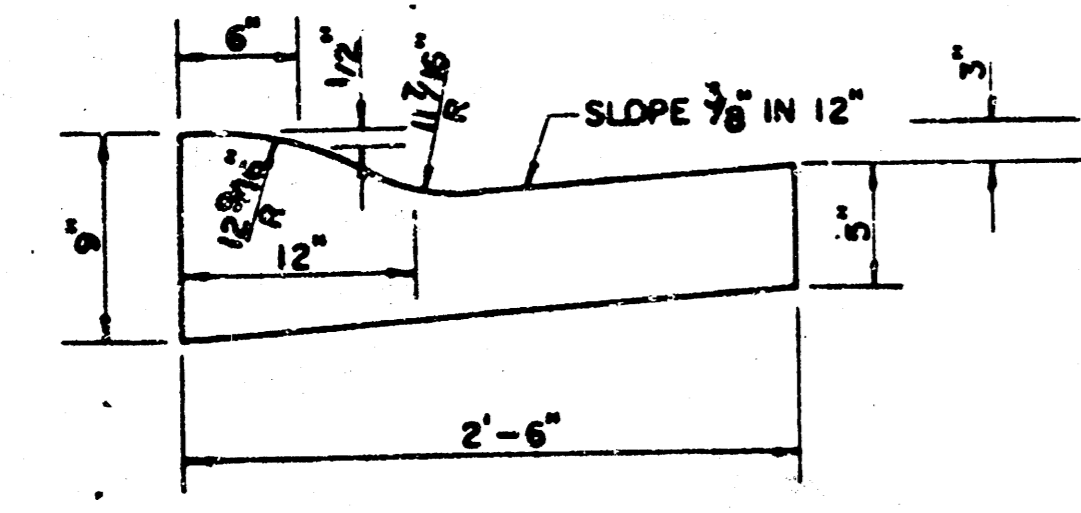
GENERAL NOTES

- ROCK BASE IS TO BE COMPACTED AND SMOOTHED WITH A STEEL FACED ROLLER PRIOR TO PLACEMENT OF ASPHALT. TACK COAT WILL NOT BE APPLIED TO ROCK BASE.
- A TACK COAT OF EMULSIFIED ASPHALT (SC-1H OR CSS-1H) SHALL BE APPLIED AT AN APPROXIMATE RATE OF 0.05 GALLONS PER SQUARE YARD BETWEEN EACH LIFT OF ASPHALTIC MATERIAL.
- BITUMINOUS BASE AND ASPHALTIC CONCRETE WEARING SURFACE SHALL BE PLACED WITH A LAYDOWN MACHINE HAVING AUTOMATIC CONTROLS FOR LINE AND GRADE.
- CONSTRUCTION JOINTS IN EACH LIFT SHALL BE STAGGERED A MINIMUM DISTANCE OF ONE (1) FOOT FROM JOINTS IN PRECEDING LIFTS AND PLACED SO THAT A JOINT WILL BE CONSTRUCTED ON THE CENTERLINE OF THE TOP LIFT.

COMBINED CURB & GUTTER



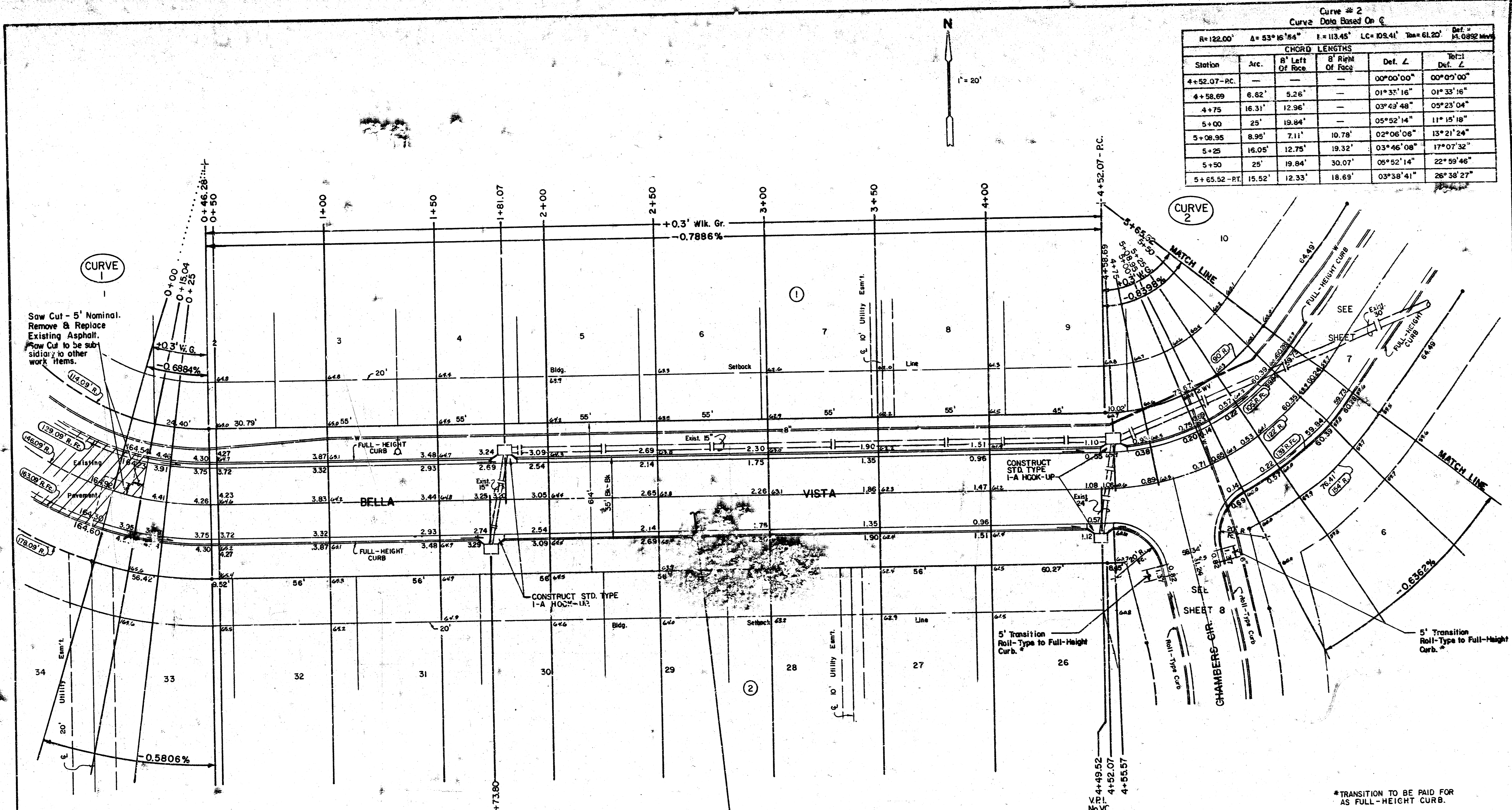
ROLL TYPE COMBINED CURB & GUTTER



5" RESIDENTIAL ASPHALTIC CONCRETE PAVEMENT WITH CRUSHED ROCK BASE ON FABRIC REINFORCEMENT

Curve # 2
Curve Data Based On C

CHORD LENGTHS					
Station	Arc.	B' Left Of Face	B' Right Of Face	Def. L	Total Def. L
4+52.07-RC.	—	—	—	00°00'00"	00°00'00"
4+58.69	6.62'	5.26'	—	01°35'16"	01°35'16"
4+75	16.31'	12.96'	—	03°43'48"	05°23'04"
5+00	25'	19.84'	—	05°52'14"	11°15'18"
5+08.95	8.95'	7.11'	10.78'	02°06'06"	13°21'24"
5+25	16.05'	12.75'	19.32'	03°46'08"	17°07'32"
5+50	25'	19.84'	30.07'	05°52'14"	22°59'46"
5+65.52-PT.	15.52'	12.33'	18.69'	03°38'41"	26°38'27"



Curve # 1
Curve Data Based On C

CHORD LENGTHS					
Station	Arc.	B' Left Of Face	B' Right Of Face	Def. L	Total Def. L
0+00 P.O.C.	—	—	—	00°00'00"	00°00'00"
0+15.04	15.04'	12.46'	17.61'	02°56'58"	02°56'58"
0+25	9.96'	8.25'	11.66'	01°57'11"	04°54'09"
0+46.28-PT.	21.28'	17.62'	24.90'	04°10'22"	09°04'31"

INTERSECTION QUANTITIES
 308.4 S.Y. 7" Asphaltic Conc. Pavement
 (5" Bituminous Base)
 39.4 S.Y. 2-1/2" Bituminous Base
 355.0 S.Y. Manipulation
 130.8 L.F. Combined Curb & Gutter

BELLA VISTA

STA. 0+00 TO STA. 5+65.52

MOEHRING & ASSOCIATES
 CONSULTING ENGINEERS
 WICHITA

Sheet 9

*TRANSITION TO BE PAID FOR AS FULL-HEIGHT CURB.

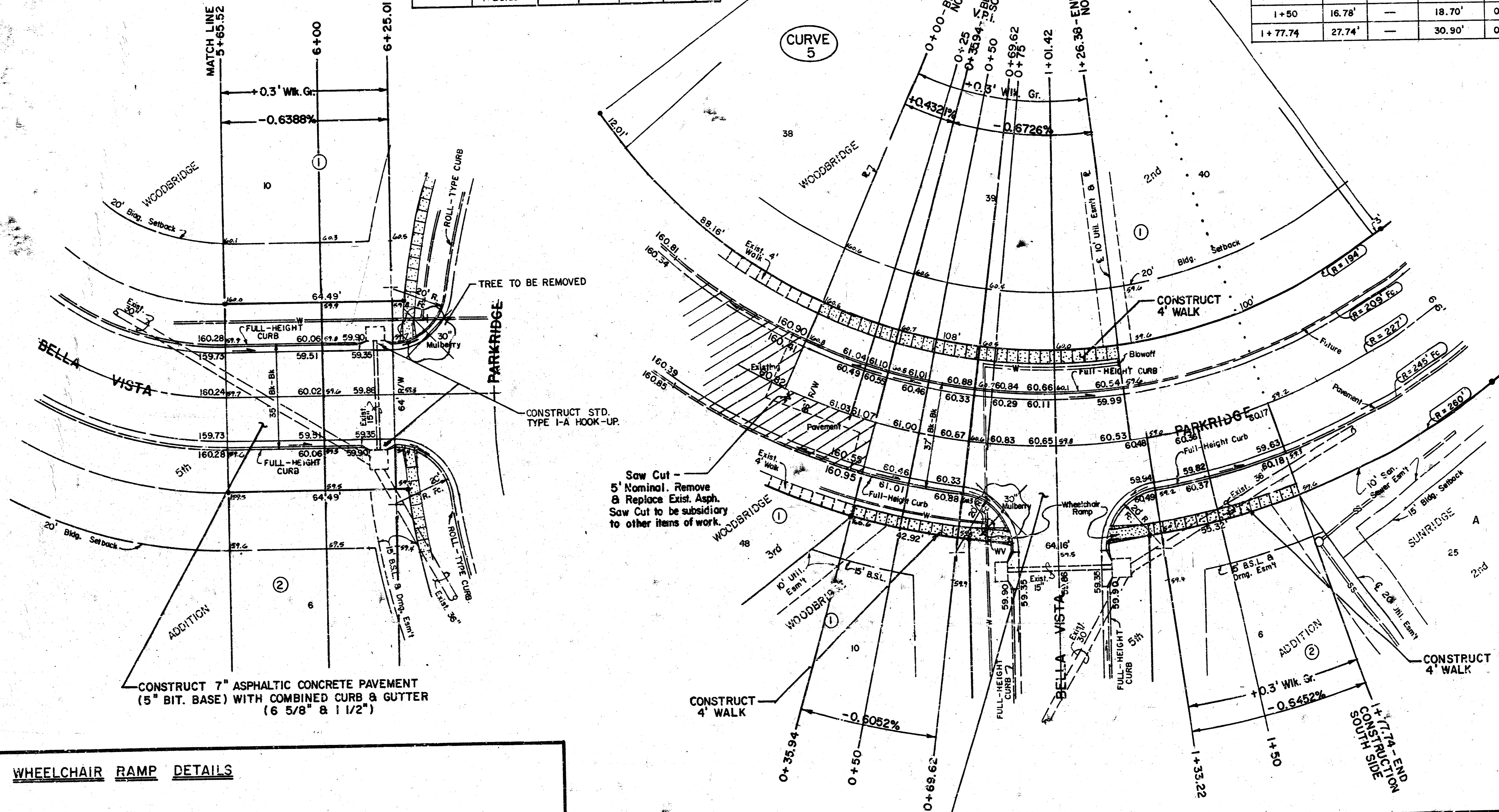
NOTE: Adjustment of water valves and/or fire hydrants will not be paid for directly, but merged into the price bid for earthwork.

WATER VALVE TABLE					
STREET	STATION	DISTANCE FROM C. RT.	LT.	EXIST. ELEV.	PROPOSED ELEV.
BELLA VISTA	1+32.07	-	24.79'	-	163.8
	5+05	-	32.00'	-	161.0
CHAMBERS CIRCLE	0+00	-	39.75'	-	164.9
	2+39	21.87'	-	-	162.7
PARKRIDGE	0+78	25.00'	-	-	160.6
	1+26.38	-	27.00'	-	160.7

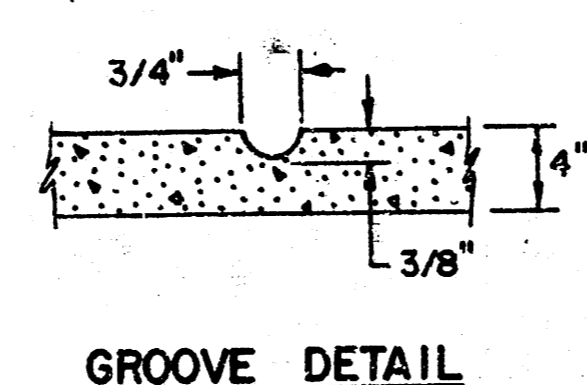
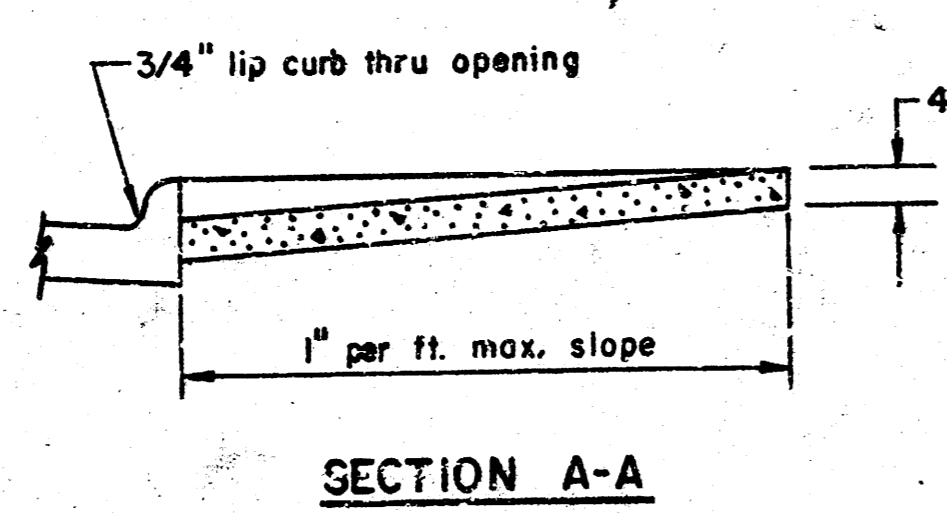
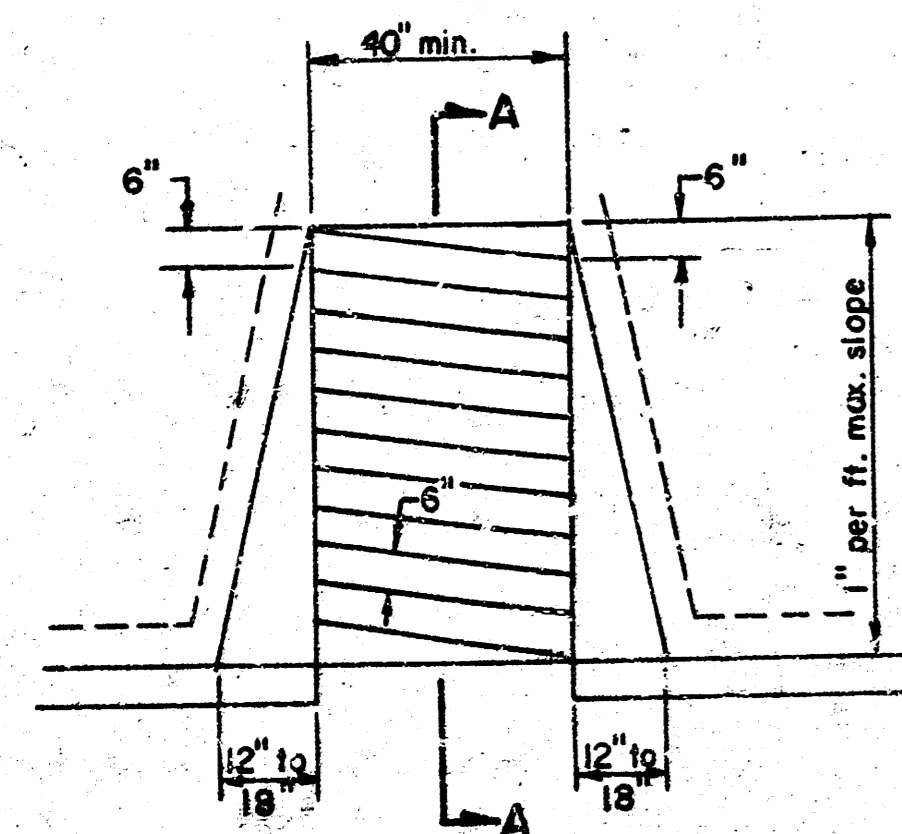
Curve #5
Curve Data Based On C

R=227' Δ=44°51'33" L=177.73' LC=173.22' Tan.=93.70' Defl.=7.572' Min/PI

CHORD LENGTHS					
Station	Arc.	B' Left of Face	B' Right of Face	Def. L.	Total Def. L.
0+00	-	-	-	00°00'00"	00°00'00"
0+25	25'	22.12'	-	03°09'18"	03°09'18"
0+35.94	10.94'	9.69'	12.19'	01°22'50"	04°32'08"
0+50	14.06'	12.45'	15.67'	01°46'27"	06'18'35"
0+69.62	19.62'	17.37'	21.86'	02°28'34"	08'47'09"
0+75	5.38'	4.76'	-	00°40'44"	09°27'53"
1+01.42	26.42'	23.38'	-	03°20'03"	12°47'56"
1+26.38	24.96'	22.09'	-	03°09'00"	15°56'56"
1+33.22	6.84'	-	7.62'	00°51'47"	16°48'43"
1+50	16.78'	-	18.70'	02°07'03"	18°55'46"
1+77.74	27.74'	-	30.90'	03°30'01"	22°25'47"



WHEELCHAIR RAMP DETAILS



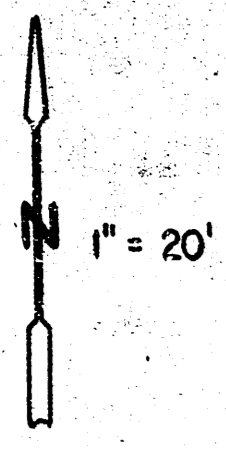
INTERSECTION QUANTITIES

- 347.4 S.Y. 8" Asphaltic Conc. Pavement (6" Bituminous Base)
- 34.8 S.Y. 3" Bituminous Base
- 393.6 S.Y. Manipulation
- 115.1 L.F. Combined Curb & Gutter
- 153.0 S.F. Wheelchair Ramp
- 236.0 S.F. 4" Walk

BELLA VISTA
STA. 5+65.52 TO STA. 6+25.01

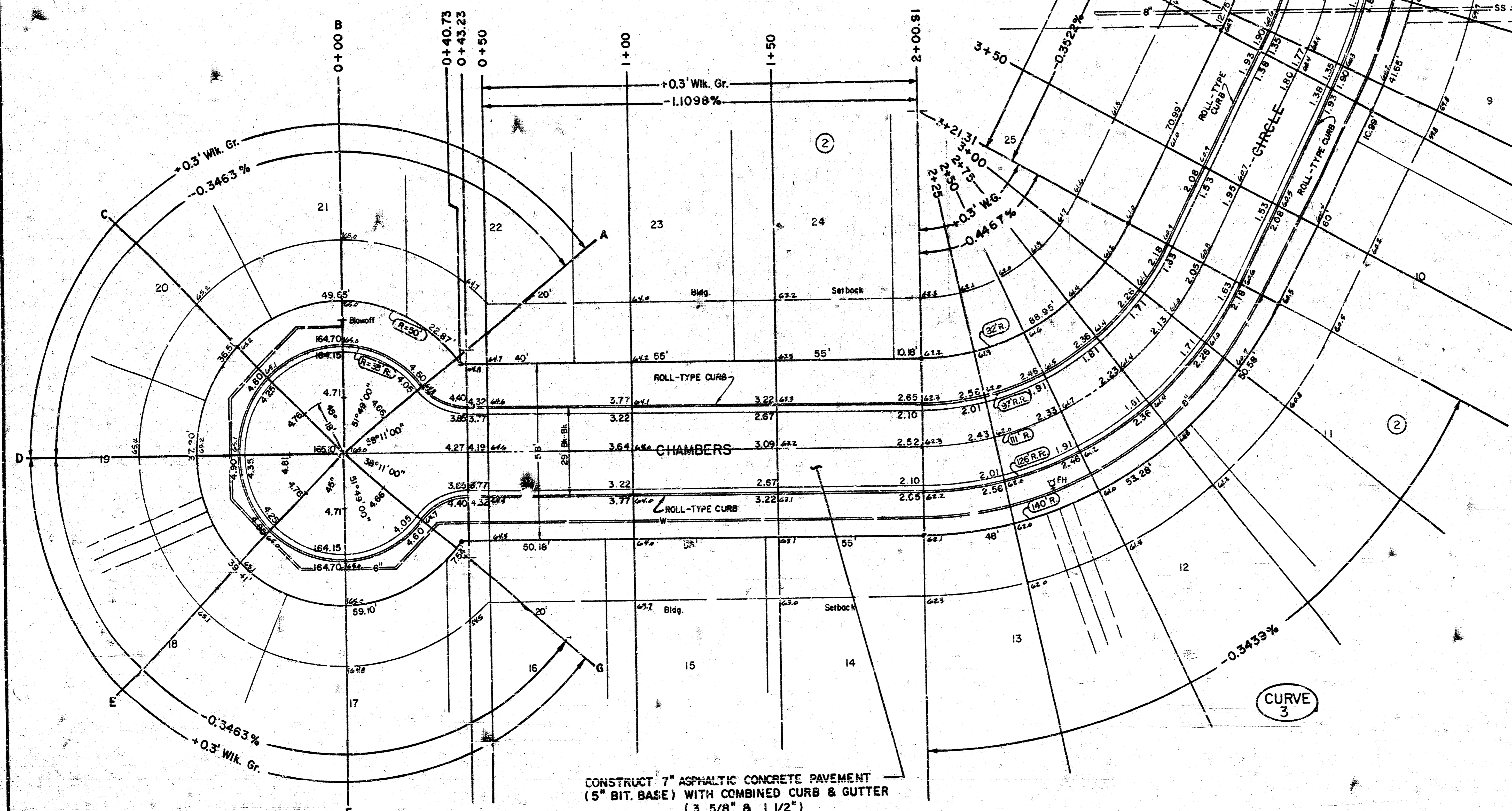
PARKRIDGE
STA. 0+00 TO STA. 1+77.74

MOERING & ASSOCIATES
CONSULTING ENGINEERS
WICHITA



Curve # 4
Curve Data Based On C

Station	Arc.	B' Left of Face	B' Right of Face	Def. L.	Total Def. L.
3+92.30 PC	-	-	-	00°00'00"	00°00'00"
4+00	7.70'	6.67'	8.73'	01°20'42"	01°20'42"
4+25	25'	21.63'	28.33'	04°22'01"	05°42'43"
4+50	25'	21.63'	28.33'	04°22'01"	10°04'44"
4+75	25'	21.63'	28.33'	04°22'01"	14°26'45"
5+00	25'	21.63'	28.33'	04°22'01"	18°48'46"
5+12.09 PT	12.09'	10.40'	13.71'	02°06'43"	20°55'29.5"



Curve # 3
Curve Data Based On C

Station	Arc.	B' Left of Face	B' Right of Face	Def. L.	Total Def. L.
2+00.91 PC	-	-	-	00°00'00"	00°00'00"
2+25	24.09'	19.28'	28.81'	06°13'03"	06°13'03"
2+50	25'	20.00'	29.89'	06°27'09"	12°40'12"
2+75	25'	20.00'	29.89'	06°27'09"	19°07'21"
3+00	25'	20.00'	29.89'	06°27'09"	25°34'30"
3+21.31 PT	21.31'	17.08'	25.49'	03°50'00"	31°04'30.5"

* TRANSITION TO BE PAID FOR AS FULL-HEIGHT CURB.

CHAMBERS CIRCLE

MOEHRING & ASSOCIATES
CONSULTING ENGINEERS
WICHITA

Sheet 11

EARTHWORK FOR STA. 4+56.1:
 C = 16.4 SF
 F = 17.8 SF

C = 40.9 CY
 F = 23.4 CY

C = 26.0 SF
 F = 6.5 SF

4+00

165
160

165
160

C = 55.3 SF
 F = 0.0 SF

3+50

165
160

165
160

C = 82.0 SF
 F = 0.0 SF

3+00

165
160

165
160

C = 102.7 SF
 F = 0.0 SF

2+50

165
160

165
160

C = 113.9 SF
 F = 0.0 SF

2+00

165
160

165
160

C = 116.0 SF
 F = 0.0 SF

1+81.07

165
160

165
160

C = 115.2 SF
 F = 0.0 SF

1+50

165
160

165
160

C = 97.4 SF
 F = 0.0 SF

1+00

165
160

165
160

C = 71.9 SF
 F = 0.0 SF

0+50

165
160

165
160

C = 63.4 SF
 F = 0.0 SF

0+15.04

165
160

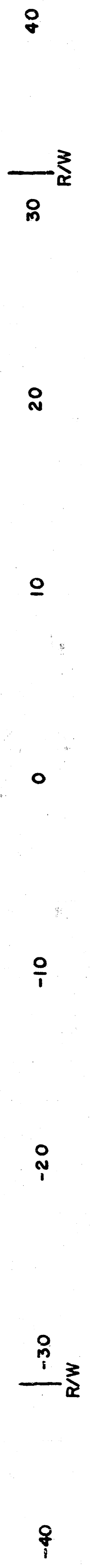
165
160

C = 0.0 SF
 F = 0.0 SF

0+00

165
160

165
160

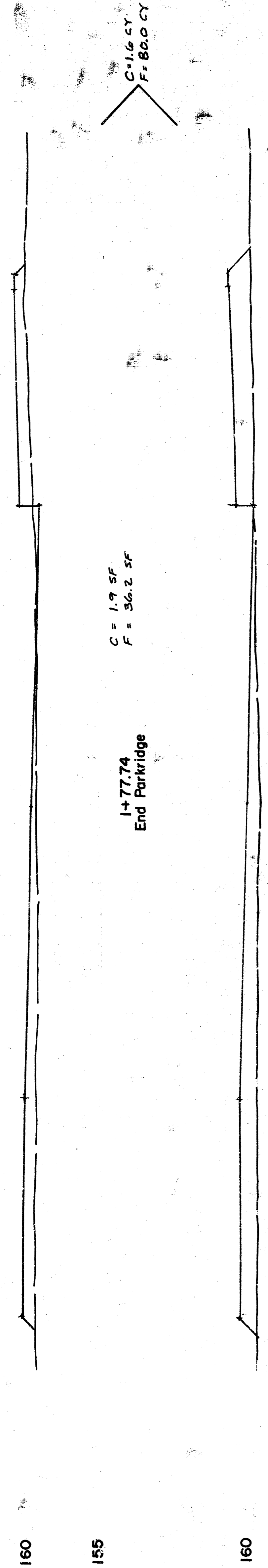


EARTHWORK FOR THIS SHEET:
 CUT = 1287.4 CY
 FILL = 29.4 CY

BELLA VISTA

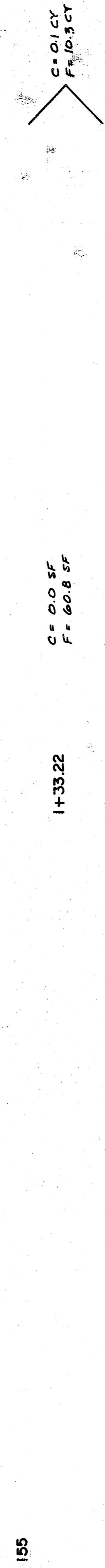
GARTINMARK P&E STA. 14+72.7
 C = 0.0 SF
 F = 0.0 SF

C = 0.0 CY
 F = 0.0 CY



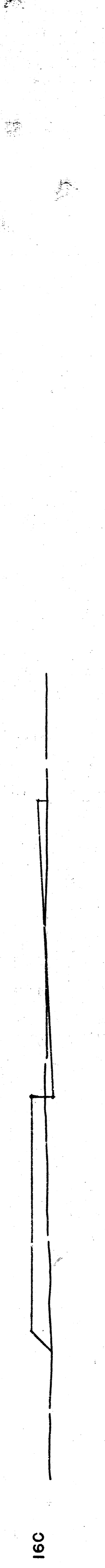
C = 1.9 SF
 F = 36.2 SF

1+77.74
 End Parkridge



C = 0.0 SF
 F = 60.8 SF

1+33.22



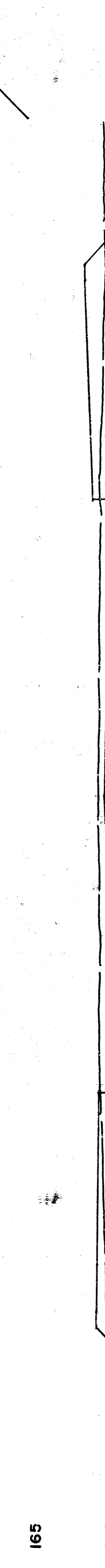
C = 1.0 SF
 F = 20.7 SF

1+26.38



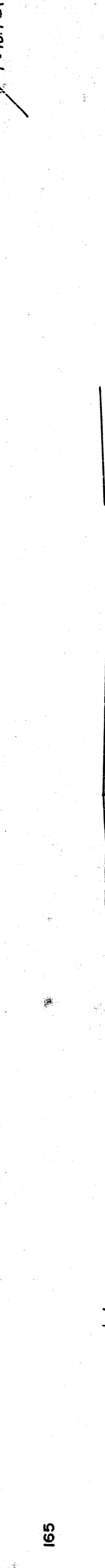
C = 6.3 SF
 F = 14.1 SF

1+01.42



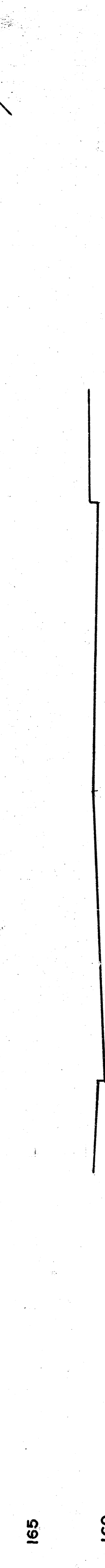
C = 24.1 SF
 F = 22.8 SF

0+69.62



C = 15.7 SF
 F = 7.5 SF

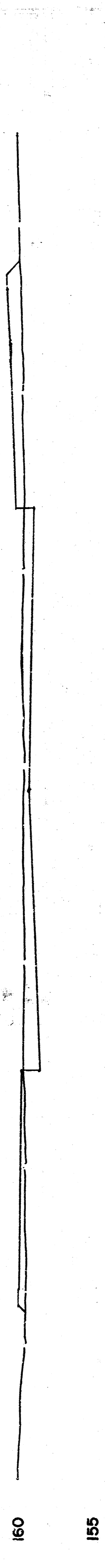
0+35.94



C = 0.0 SF
 F = 0.0 SF

0+00
 Begin Parkridge

-40 -30 -20 -10 0 10 20 30 40
 R/W



C = 20.0 SF
 F = 14.7 SF

6+25.01 - W. End Return
 End Bella Vista



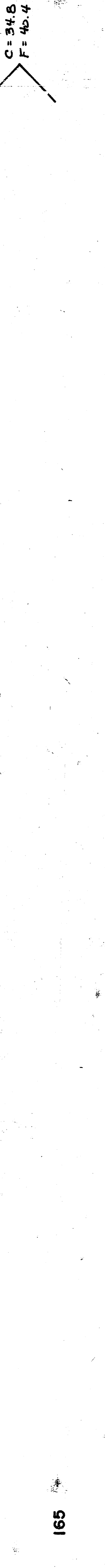
C = 13.5 SF
 F = 21.2 SF

5+65.52



C = 16.7 SF
 F = 20.6 SF

5+08.95



C = 16.4 SF
 F = 17.8 SF

4+52.07

-40 -30 -20 -10 0 10 20 30 40
 R/W

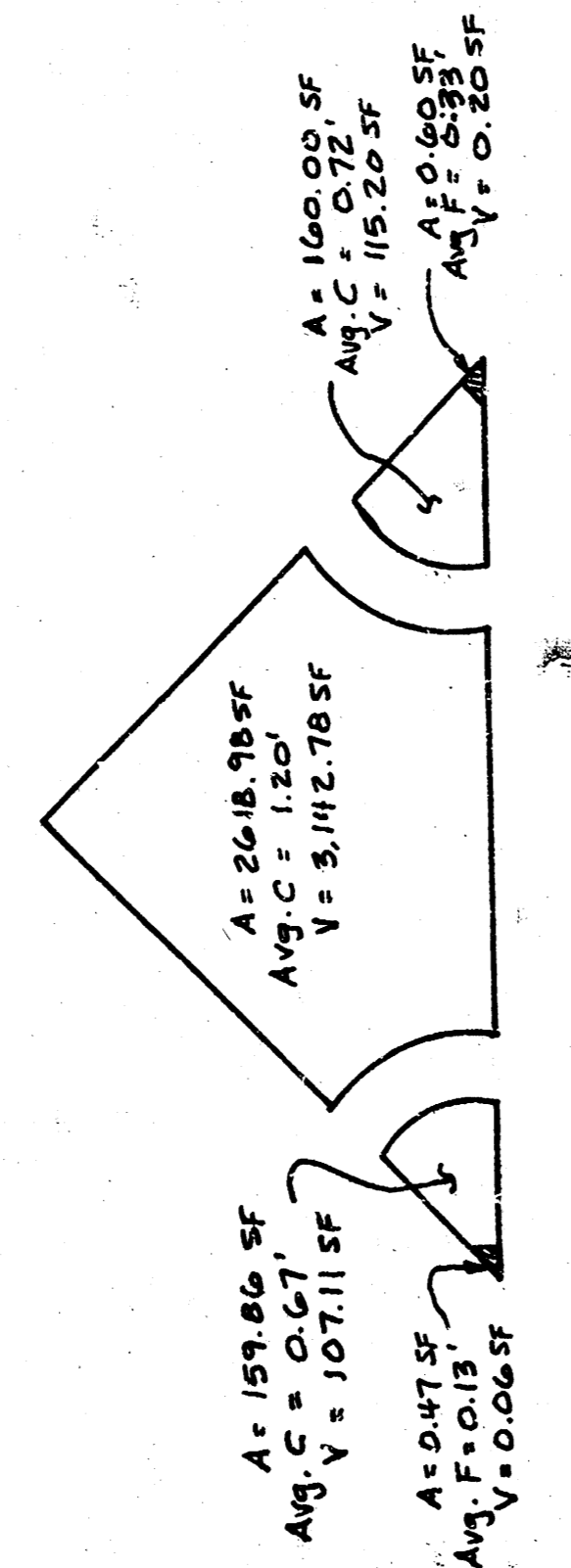
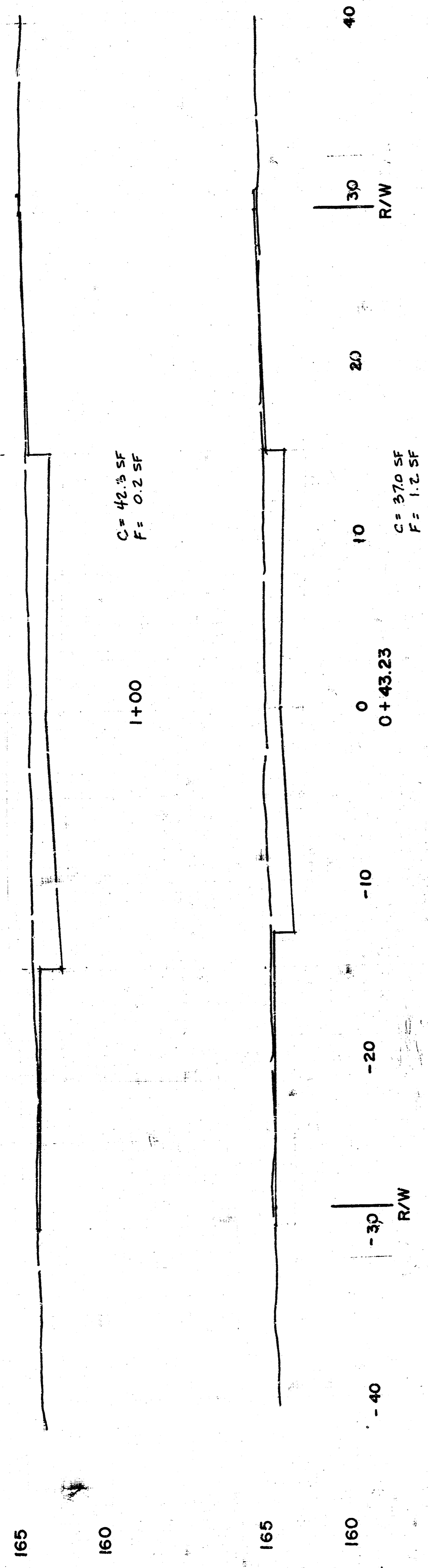
EARTHWORK FOR THIS SHEET:
 CUT = 161.7 CY
 FILL = 275.7 CY

BELLA VISTA/
 PARKRIDGE
 Sheet 13

EARTHWORK FOR 1+50
 C = 27.9 SF
 F = 4.3 SF

C = 66.8 CY
 F = 4.2 CY

C = 83.3 CY
 F = 1.3 CY



C = 124.6 CY
 F = 0.01 CY

C = 1.8 CY
 F = 1.7 CY

C = 2.1 CY
 F = 0.00 CY

C = 1.7 CY
 F = 0.00 CY

C = 2.6 CY
 F = 0.00 CY

C = 3.1 CY
 F = 0.00 CY

C = 2.0 CY
 F = 0.20 CY

C = 0.1 SF
 F = 2.6 SF

C = 2.1 SF
 F = 0.0 SF

C = 1.3 SF
 F = 0.0 SF

C = 1.3 SF
 F = 0.0 SF

C = 2.8 SF
 F = 0.0 SF

C = 2.1 SF
 F = 0.0 SF

C = 32.8 SF
 F = 0.0 SF

C = 36.5 SF
 F = 0.0 SF

C = 34.7 SF
 F = 0.0 SF

C = 34.7 SF
 F = 0.0 SF

C = 36.5 SF
 F = 0.0 SF

C = 36.5 SF
 F = 0.0 SF

C = 34.6 SF
 F = 0.0 SF

C = 19.3 CY
 F = 0.0 CY

C = 18.7 CY
 F = 0.0 CY

C = 18.2 CY
 F = 0.0 CY

C = 18.7 CY
 F = 0.0 CY

C = 19.2 CY
 F = 0.0 CY

C = 19.6 CY
 F = 0.0 CY

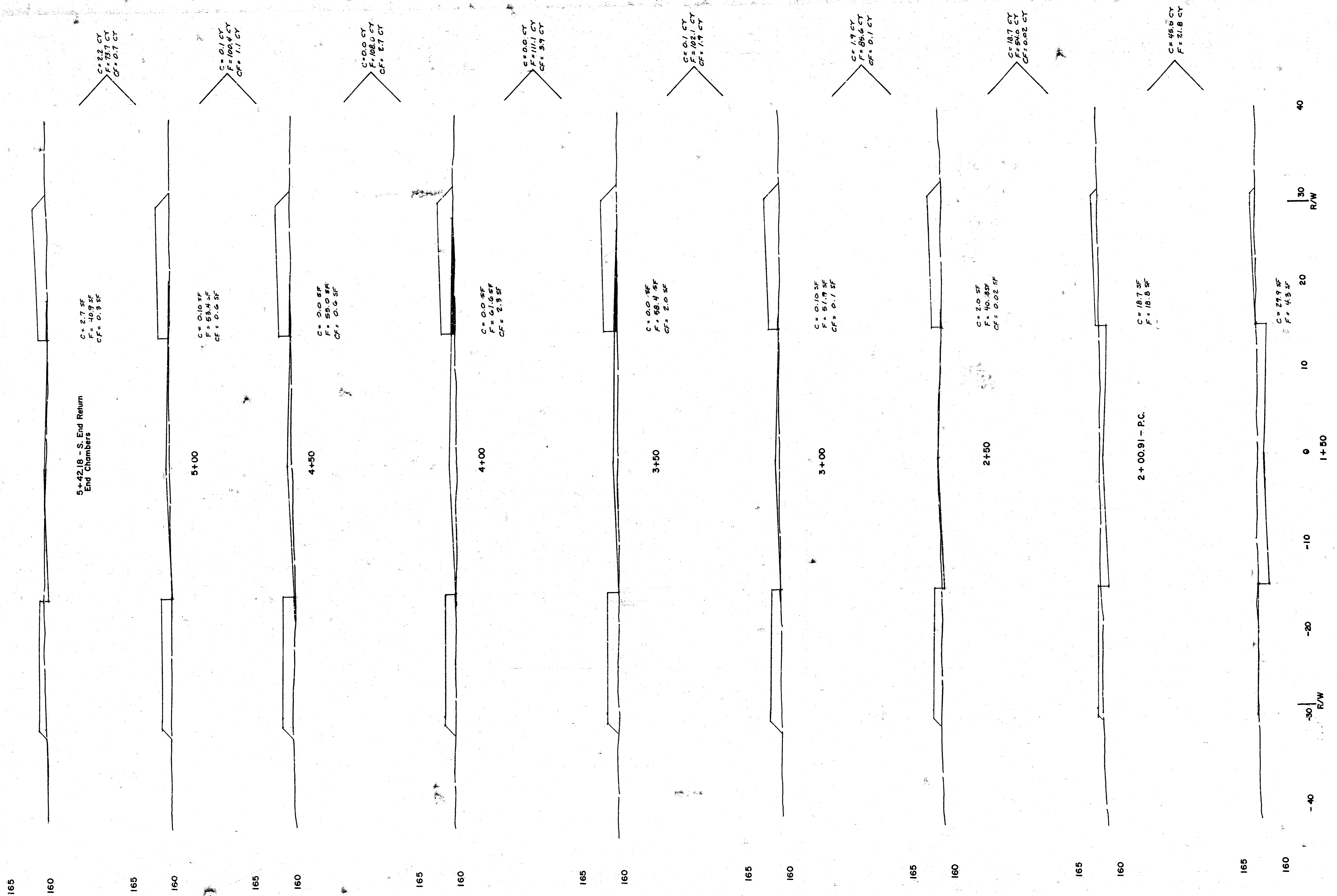
165
160

0 10 20 30 40 50 60
 R/W

CHAMBERS CIRCLE CUL - DE - SAC

EARTHWORK THIS SHEET:
 CUT = 401.6 CY
 FILL = 7.6 CY

CHAMBERS CIRCLE



EARTHWORK THIS SHEET:
 CUT = 68.8 CY
 FILL = 656.7 CY
 COMP. FILL = 10.4 CY