

STREETS IN WOODLAND ESTATES

LINDEN / SHANNON WAY : FROM THE NORTH LINE OF GATEWOOD TO THE WEST LINE OF WOODLAND ESTATES
LINDEN COURT : FROM THE WEST LINE OF LINDEN TO AND INCL. CUL-DE-SAC (LOTS 1 THROUGH 12 BLK. 1, WOODLAND ESTATES)
LINDEN COURT : FROM THE WEST LINE OF LINDEN TO AND INCL. CUL-DE-SAC (LOTS 13 THROUGH 20 BLK. 1, WOODLAND ESTATES)
LINDEN COURT : FROM THE WEST LINE OF LINDEN TO AND INCL. CUL-DE-SAC (LOTS 21 THROUGH 26 BLK. 1, WOODLAND ESTATES)

PROJECT NO.
472-76-245-81593-000-000-001

CITY OF WICHITA KANSAS
MICHAEL E. LINDEBAK CITY ENGINEER
DECEMBER, 1986

GENERAL NOTES

- CURB AND GUTTER WITH WIDENED GUTTER TO BE PAID AS COMBINED CURB AND GUTTER.
- ALL DRAINAGE STRUCTURES "BY OTHERS".
- THE CONTRACTOR SHALL BE RESPONSIBLE FOR PRESERVING PROPERTY IRONS. THE CONTRACTOR SHALL BE REQUIRED TO RE-ESTABLISH ANY PROPERTY IRONS WHICH ARE DAMAGED OR DESTROYED BY HIS CONSTRUCTION OPERATIONS. SUCH IRONS SHALL BE RE-ESTABLISHED BY A LICENSED LAND SURVEYOR OR A LICENSED PROFESSIONAL ENGINEER IN ACCORDANCE WITH STATE LAWS.
- TRANSITION CURB FROM FULL HEIGHT COMBINATION CURB AND GUTTER TO ROLL TYPE COMBINATION CURB AND GUTTER IS TO BE PAID AS BID FOR LINEAR FEET COMBINED CURB AND GUTTER. (3 5/8" ROLL).
- CURB SHALL BE DEPRESSED THROUGH DRIVES (1 1/2"), WHERE ROLL TYPE CURB AND GUTTER IS CONSTRUCTED.
- STANDARD STORM WATER INLET HOOKUPS ARE TO BE A BID "EACH" WITHOUT REGARD TO WIDTH OR LENGTH. THE NON-STANDARD STORM WATER INLET HOOKUP AT STA. 2 + 00 RIGHT ON LINDEN SHALL BE BID AS LUMP SUM.
- TREES ARE AN IMPORTANT ASSET IN THIS DEVELOPMENT. A PRE-CONSTRUCTION CONFERENCE SHALL BE HELD TO DETERMINE WHICH TREES (IF ANY) BEYOND OR OUTSIDE OF CURB LINES SHALL BE REMOVED. THIS CONFERENCE SHOULD INCLUDE THE OWNER AND/OR HIS AGENT.

NOTE: NOTIFY THE FOLLOWING COMPANIES PRIOR TO ANY EXCAVATION:

ARKLA GAS COMPANY	942-8350
BELL TELEPHONE COMPANY	1-316-571-2115
CABLEVISION	262-0661
KPL GAS SERVICE	263-7511
KANSAS GAS & ELECTRIC	261-6248
KANSAS ONE-CALL	1-800-344-7233
CITIES SERVICE	524-0491
KANSAS GAS SUPPLY	1-316-254-7243
CONTINENTAL PIPELINE COMPANY	1-316-681-2081
CO-OP REFINERY PIPELINE	1-316-221-2107

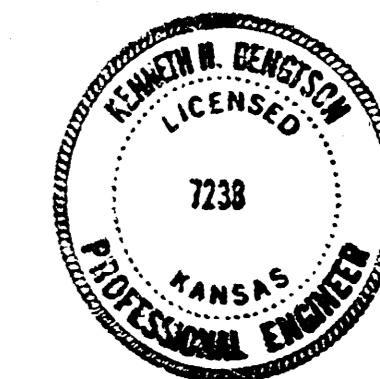
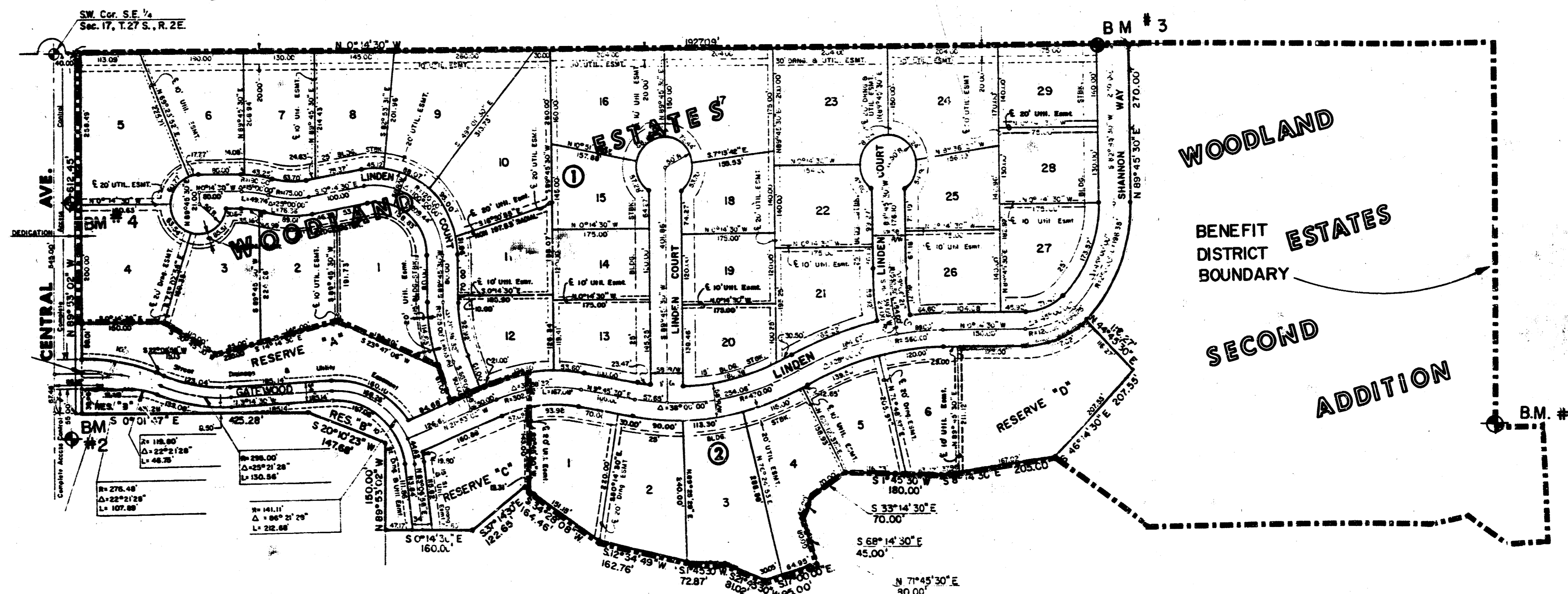
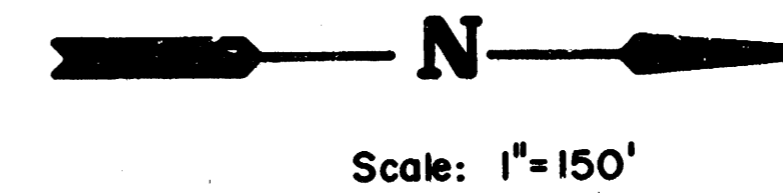
ASPHALTIC CONCRETE AND CONCRETE SLABS SHOWN ON THESE PLANS WERE IN PLACE AT THE TIME OF THE PRELIMINARY SURVEY. SINCE THAT TIME PORTIONS AND PIECES OF THESE SLABS HAVE BEEN REMOVED BY OTHER CONSTRUCTION ACTIVITY. THE WORK OF REMOVING THE REMAINING SLABS WITHIN THE STREET RIGHT-OF-WAY WILL BE AS A LUMP SUM BID ITEM. (CONCRETE AND ASPHALT SLABS REMOVED)

BENCH MARKS

- T.B.M. #1 SPK STEP IN COR. FC POST
 660' E. & 40' S. OF CTR.
 SEC. 17, T27S, R2E
 ELEV. = 176.09'
- B.M. #2 CITY OF WICHITA BENCH MARK DISC.
 ON THE NORTHEAST CORNER OF RCB
 AT CENTRAL AND GYPSUM CREEK
 ELEV. = 157.24'
- B.M. #3 " " ON S. CURB OF SHANNON WAY
 44' W. OF W. LINE OF WOODLAND ESTATES
 ELEV. = 173.89'
- B.M. #4 " " CUT ON N. TC. OF CENTRAL ON
 LOT LINE BETWEEN LOTS 4 & 5 - 1
 ELEV. = 162.56'

INDEX TO DRAWINGS

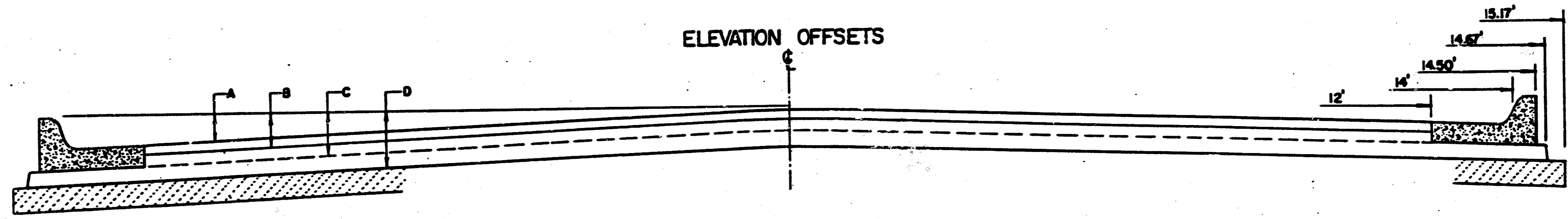
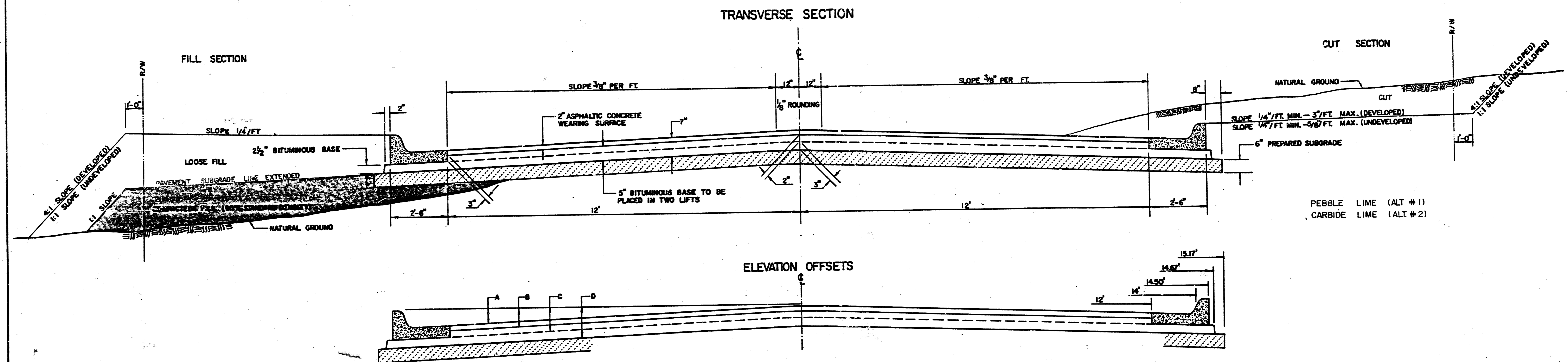
SHEET NO.	DESCRIPTION
1	TITLE SHEET
2	PAVING DETAILS
3-4	LINDEN
5	SHANNON WAY
6-7	LINDEN COURT (Lots 1-12, Blk. 1)
8	LINDEN COURT (Lots 13-20, Blk. 1)
9	LINDEN COURT (Lots 21-26, Blk. 1)
10-19	CROSS SECTIONS
20	FINAL PLAT



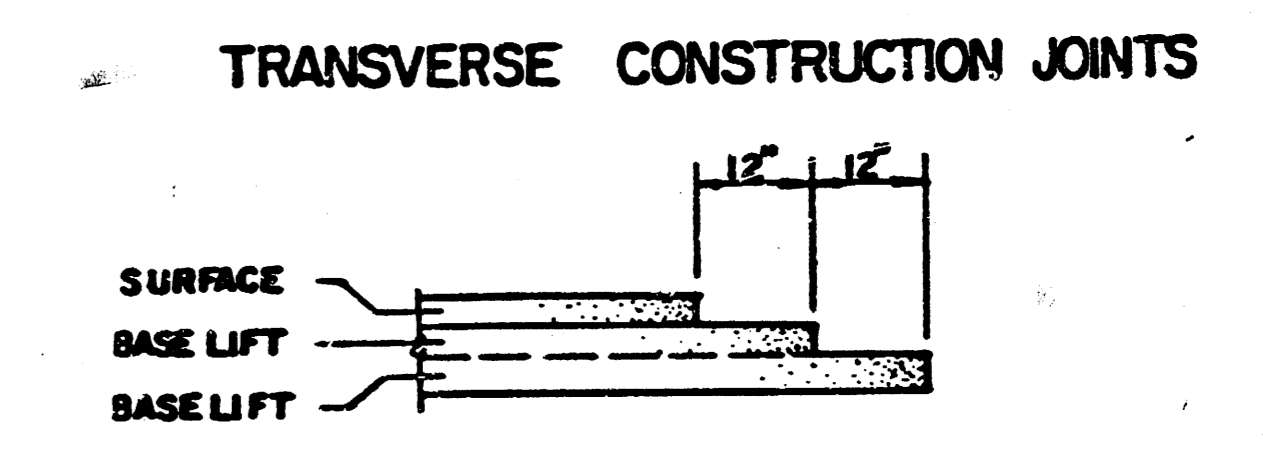
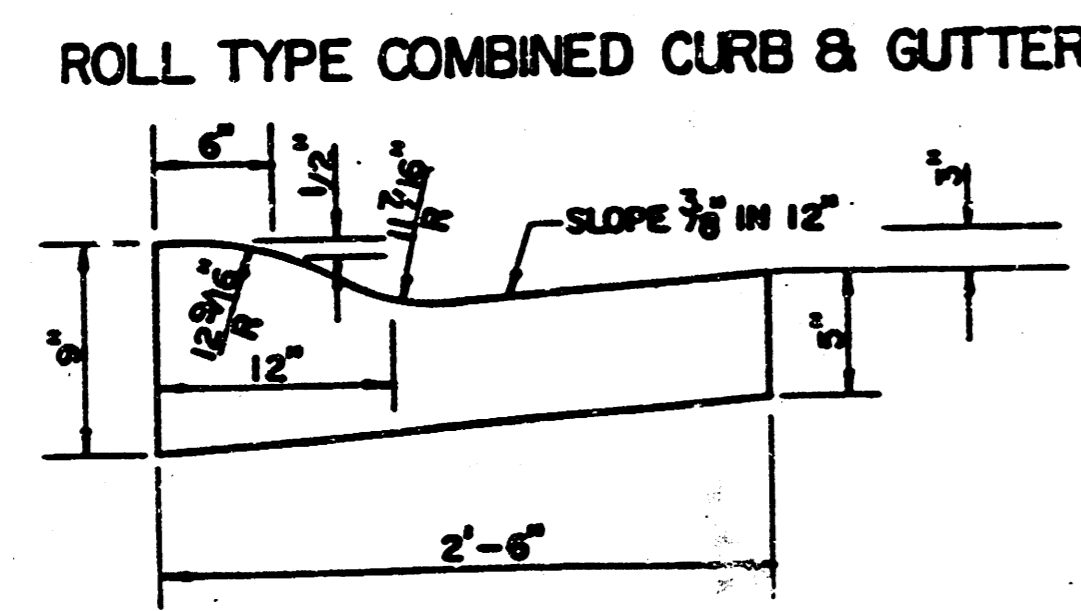
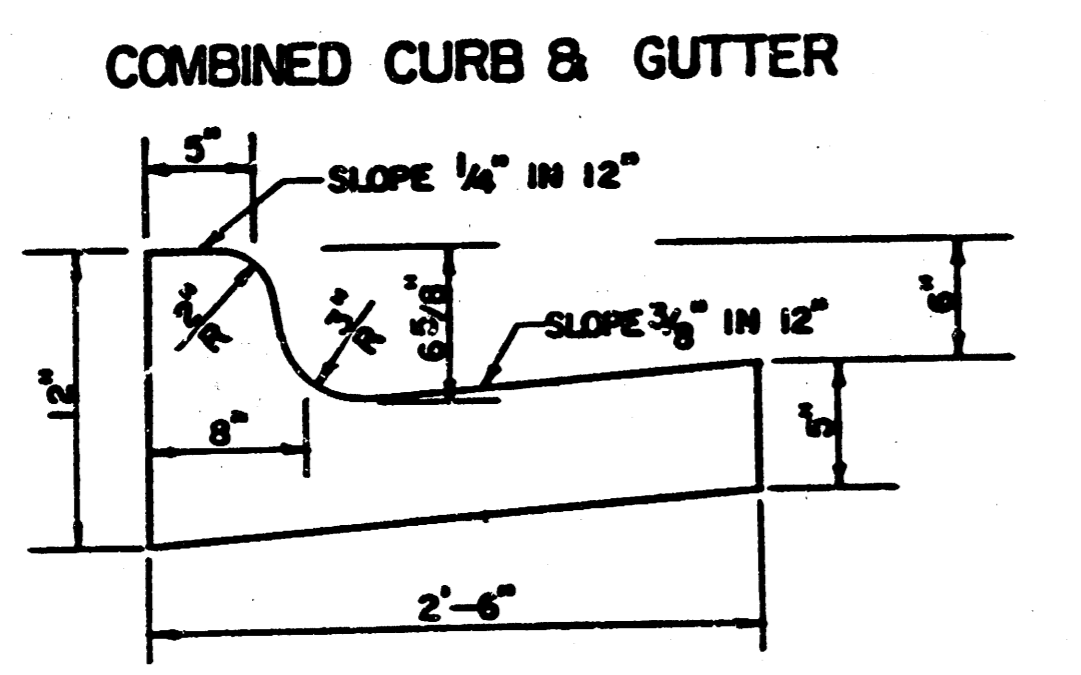
	WOODLAND ESTATES	Drawn by KHB
	PAVING PLANS	Checked by KHB
		Date DEC 1986
		Job No.

MID-KANSAS ENGINEERING CONSULTANTS PA 3500 NORTH ROCK ROAD BUILDING #800 WICHITA, KANSAS 67226	682-6561	Sheet 1 / 16 of 20
---	----------	-------------------------------------

TYPICAL 29' PAVEMENT DETAILS



	DISTANCE FROM CENTERLINE (L.F. & RT)											
	0'	2'	4'	6'	7'	8'	10'	12'	14'	14.5'	14.67'	15.17'
A: TOP OF CURBS TO TOP OF SURFACE LIFT	0.13	0.18	0.24	0.30	0.33	0.36	0.43	0.49	—	—	—	—
B: TOP OF CURBS TO TOP OF UPPER BASE LIFT	0.30	0.35	0.41	0.47	0.50	0.53	0.60	0.66	—	—	—	—
C: TOP OF CURBS TO TOP OF LOWER BASE LIFT	0.47	0.52	0.60	0.68	0.71	0.75	0.83	0.90	0.98	1.00	1.01	—
D: TOP OF CURBS TO TOP OF SUBGRADE	0.72	0.77	0.84	0.91	0.94	0.98	1.05	1.12	1.19	1.21	1.21	1.23



GENERAL NOTES

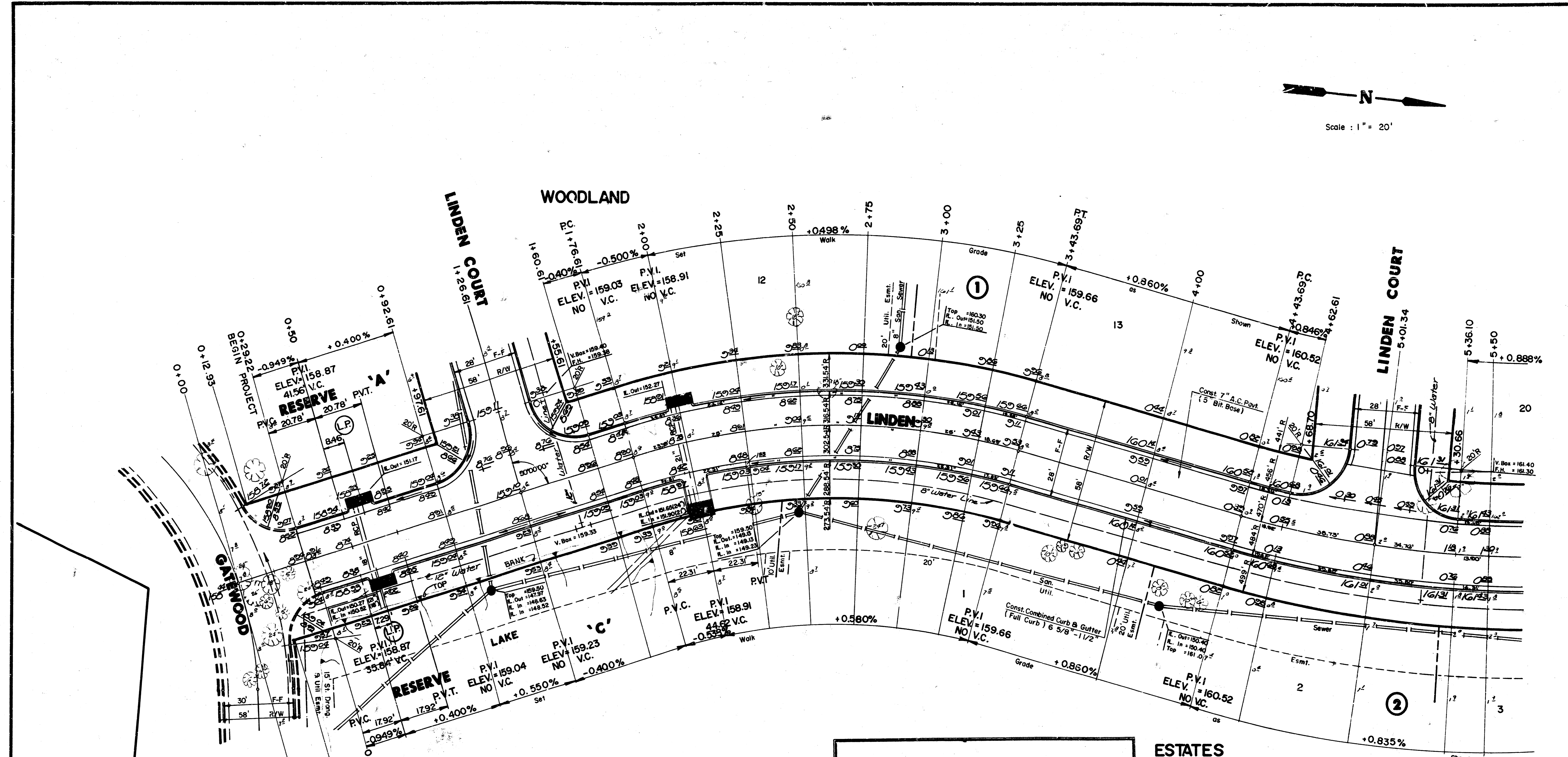
- 1) THE ASPHALTIC CONCRETE PAVEMENT BETWEEN THE COMBINED CURB AND GUTTER SHALL BE PAID AS SQUARE YARDS OF 7\"/>
- 2) THE BITUMINOUS BASE UNDER AND BEHIND THE COMBINED CURB AND GUTTER SHALL BE PAID AS SQUARE YARDS OF 2 1/2\"/>
- 3) A TACK COAT OF EMULSIFIED ASPHALT (SC-1H OR CSS-1H) SHALL BE APPLIED AT AN APPROXIMATE RATE OF 0.05 GALLONS PFR SQUARE YARD BETWEEN EACH LIFT OF ASPHALTIC MATERIAL.
- 4) BITUMINOUS BASE AND ASPHALTIC CONCRETE WEARING SURFACE SHALL BE PLACED WITH A LAYDOWN MACHINE HAVING AUTOMATIC CONTROLS FOR LINE AND GRADE.
- 5) CONSTRUCTION JOINTS IN EACH LIFT SHALL BE STAGGERED A MINIMUM DISTANCE OF ONE (1) FOOT FROM JOINTS IN PRECEDING LIFTS AND PLACED SO THAT A JOINT WILL BE CONSTRUCTED ON THE CENTERLINE OF THE TOP LIFT.
- 6) CONTRACTOR TO BID ONLY ONE SUBGRADE TREATMENT ALTERNATE WHEN ALTERNATES ARE PROVIDED IN THE PROPOSAL AND CONTRACT. THE ALTERNATE CHOSEN BY THE SUCCESSFUL BIDDER SHALL BE USED IN CONSTRUCTING THIS PROJECT.

TRANSVERSE CONSTRUCTION JOINTS SHALL BE CONSTRUCTED IN FLEXIBLE BASE PAVEMENTS AT LOCATIONS WHERE PAVEMENT JOINS EXISTING FLEXIBLE BASE PAVEMENT AS SHOWN BY THE DETAIL. ALL COSTS ASSOCIATED WITH THE CONSTRUCTION OF THE TRANSVERSE JOINT SHALL BE INCLUDED IN THE BID PRICE FOR SQUARE YARDS 7\"/>

7 INCH RESIDENTIAL ASPHALTIC CONCRETE PAVEMENT WITH 5 INCH BITUMINOUS BASE
CITY OF WICHITA, KANSAS
PROJECT NUMBER
 472-76-245-81593-000-000-001 2/16



Scale: 1" = 20'



$\Delta = 31^\circ 38' 32''$ R = 302.54' T = 85.73' L = 167.08 LC = 164.97'

CURVE DATA BASED ON Centerline RAD. $\Delta / 2 = 15^\circ 49' 16''$

STATION	ARC	CHORD LENGTH	CHORD LENGTH	DEFLECTION	TOTAL DEFLECTION
		LT. OFFSET	RT. OFFSET		
1+76.61					00°00'00"
2+00.00	23.39'	25.08'	21.68'	02°12'53"	02°12'53"
2+25.00	25.00'	26.81'	23.17'	02°22'02"	04°34'55"
2+50.00	25.00'	26.81'	23.17'	02°22'02"	06°56'58"
2+75.00	25.00'	26.81'	23.17'	02°22'02"	09°19'00"
3+00.00	25.00'	26.81'	23.17'	02°22'02"	11°41'02"
3+25.00	25.00'	26.81'	23.17'	02°22'02"	14°03'04"
3+43.69	18.69'	20.05'	17.33'	01°46'11"	15°49'16"

Def./Ft. = 5.6815 Min

$\Delta = 38^\circ 00' 00''$ R = 470.00' T = 161.83' L = 311.72 LC = 306.03'

CURVE DATA BASED ON Centerline RAD. $\Delta / 2 = 19^\circ 00' 00''$

STATION	ARC	CHORD LENGTH		DEFLECTION	TOTAL DEFLECTION
		LT. OFFSET	RT. OFFSET		
4+43.69					00°00'00"
4+62.61	18.92'	18.03'	19.81'	01°09'12"	01°09'12"
5+01.34	38.73'	69.98'	40.53'	02°21'39"	03°30'50"
5+36.10	34.76'	36.38'	36.38'	02°07'07"	05°37'57"
5+50.00	13.90'	13.25'	14.55'	00°50'50"	06°28'47"
5+75.00	25.00'	23.83'	26.17'	01°31'26"	08°00'13"
6+00.00	25.00'	23.83'	26.17'	01°31'26"	09°31'39"
6+25.00	25.00'	23.83'	26.17'	01°31'26"	11°03'05"
6+50.00	25.00'	23.83'	26.17'	01°31'26"	12°34'31"
6+75.00	25.00'	23.83'	26.17'	01°31'26"	14°05'57"
7+00.00	25.00'	23.83'	26.17'	01°31'26"	15°37'22"
7+25.00	25.00'	23.83'	26.17'	01°31'26"	17°08'48"
7+50.00	25.00'	23.83'	26.17'	01°31'26"	18°40'14"
7+55.40	9.40'	5.15'	5.66'	00°19'46"	19°00'00"

Def./Ft. = 3.6572 Min

ESTATES

Excavation	Comp. Fill
5466.0	77.0
546.6	7.7
6012.6 CY	84.7 CY

Manipulation = 11,850 S.Y.

CITY OF WICHITA

LINDEN

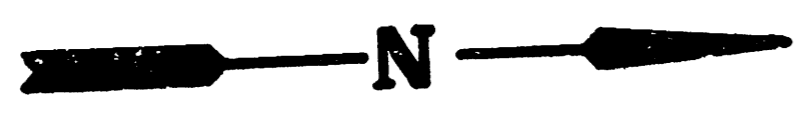
PROJECT NO.
472-76-245-81593-000-000-001

Design FF
Drawn by FF
Checked by KMB / JCS
Date Dec., 1986
Job no.

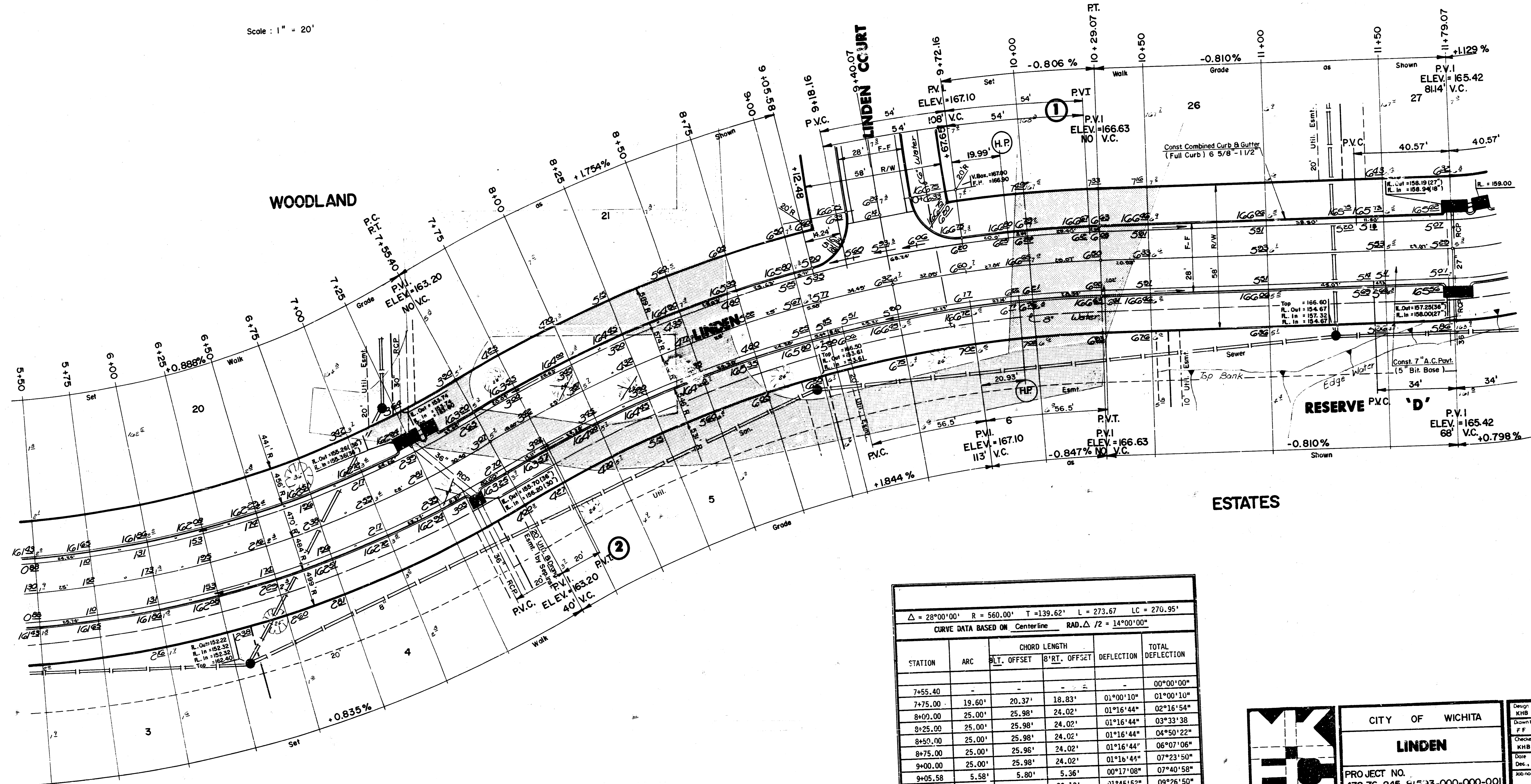
MID-KANSAS ENGINEERING CONSULTANTS PA
3500 NORTH ROCK ROAD
BUILDING #800
WICHITA, KANSAS 67226

682-6561

Sheet **3**
of **20**



Scale: 1" = 20'



$\Delta = 28^{\circ}00'00''$ R = 560.00' T = 139.62' L = 273.67' LC = 270.95'
 CURVE DATA BASED ON Centerline RAD. $\Delta / 2 = 14^{\circ}00'00''$

STATION	ARC	CHORD LENGTH		DEFLECTION	TOTAL DEFLECTION
		BLT. OFFSET	RT. OFFSET		
7+55.40	-	-	-	-	00°00'00"
7+75.00	19.60'	20.37'	18.83'	01°00'10"	01°00'10"
8+00.00	25.00'	25.98'	24.02'	01°16'44"	02°16'54"
8+25.00	25.00'	25.98'	24.02'	01°16'44"	03°33'38"
8+50.00	25.00'	25.98'	24.02'	01°16'44"	04°50'22"
8+75.00	25.00'	25.98'	24.02'	01°16'44"	06°07'06"
9+00.00	25.00'	25.98'	24.02'	01°16'44"	07°23'50"
9+05.58	5.58'	5.80'	5.36'	00°17'08"	07°40'58"
9+10.07	34.49'	69.16'	33.13'	01°45'52"	09°26'50"
9+40.07	32.09'	-	30.83'	01°38'30"	11°05'20"
9+72.16	27.84'	28.93'	26.74'	01°25'27"	12°30'47"
10+00.00	29.07'	30.21'	27.93'	01°29'14"	14°00'00"
10+29.07	-	-	-	-	-

Def./Ft. = 3.0694 Min.

CITY OF WICHITA

LINDEN

PROJECT NO.
472-76-245-61533-000-000-001

Design: KHB FF

Drawn by: FF

Checked by: KHB

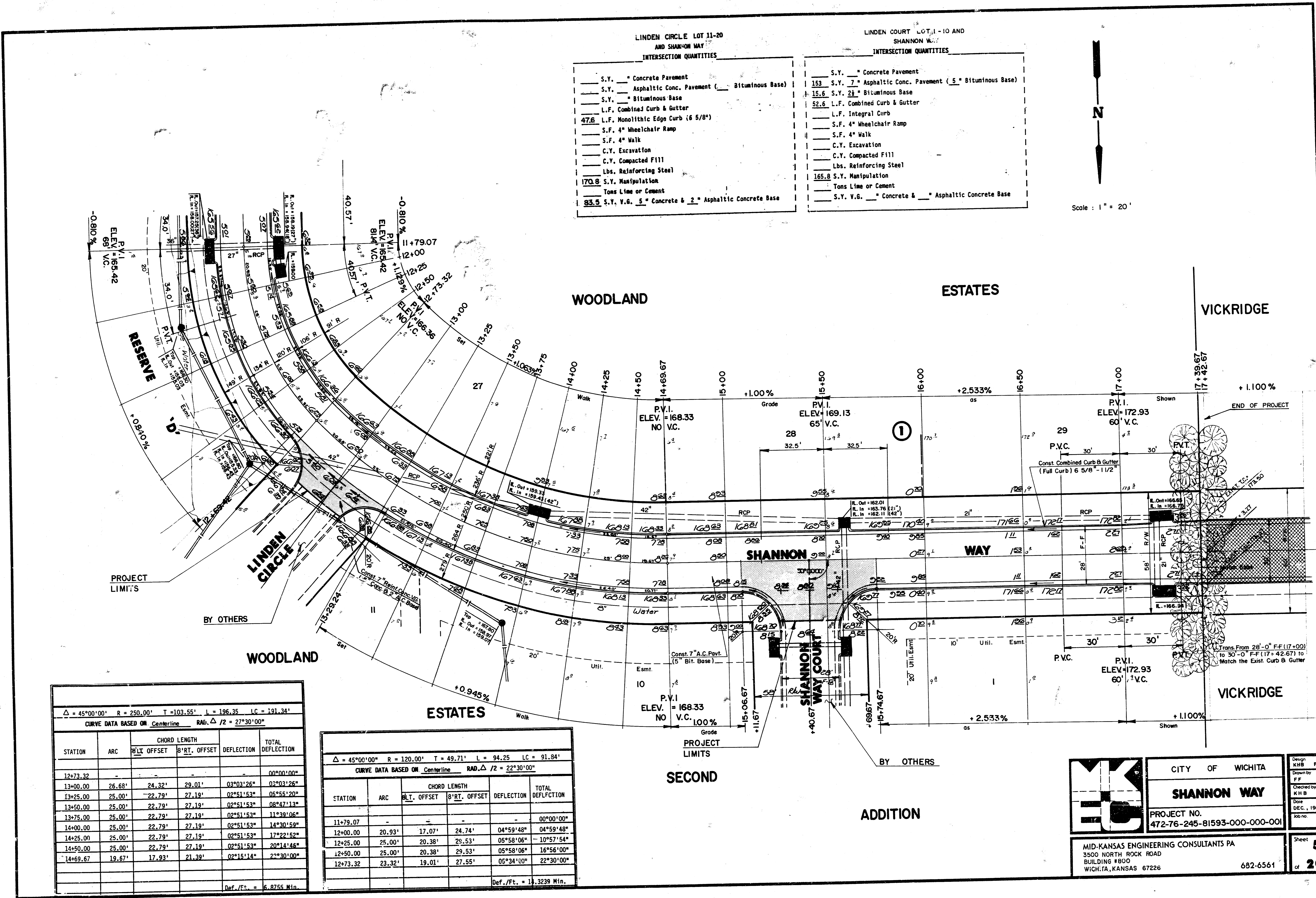
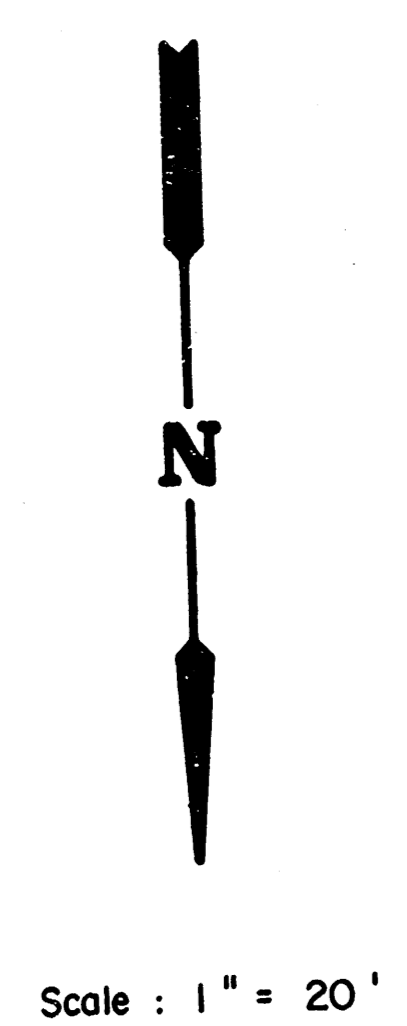
Date: 1986

Sheet: 4 of 20

MID-KANSAS ENGINEERING CONSULTANTS PA
 3500 NORTH ROCK ROAD
 BUILDING #800
 WICHITA, KANSAS 67226

682-6561

LINDEN CIRCLE LOT 11-20 AND SHANNON WAY INTERSECTION QUANTITIES		LINDEN COURT LOT 1-10 AND SHANNON WAY INTERSECTION QUANTITIES	
— S.Y. —	Concrete Pavement	— S.Y. —	Concrete Pavement
— S.Y. —	Asphaltic Conc. Pavement (— Bituminous Base)	153 S.Y. 7"	Asphaltic Conc. Pavement (5" Bituminous Base)
— S.Y. —	Bituminous Base	15.6 S.Y. 2 1/2"	Bituminous Base
—	L.F. Combined Curb & Gutter	52.6	L.F. Combined Curb & Gutter
47.6	L.F. Monolithic Edge Curb (6 5/8")	—	L.F. Integral Curb
—	S.F. 4" Wheelchair Ramp	—	S.F. 4" Wheelchair Ramp
—	S.F. 4" Walk	—	S.F. 4" Walk
—	C.V. Excavation	—	C.V. Excavation
—	C.V. Compacted Fill	—	C.V. Compacted Fill
—	Lbs. Reinforcing Steel	—	Lbs. Reinforcing Steel
170.8	S.Y. Manipulation	165.8	S.Y. Manipulation
—	Tons Lime or Cement	—	Tons Lime or Cement
83.5	S.Y. V.G. 5" Concrete & 2" Asphaltic Concrete Base	—	S.Y. V.G. —" Concrete & —" Asphaltic Concrete Base



$\Delta = 45^{\circ}00'00''$ R = 250.00' T = 103.55' L = 196.35' LC = 191.34'

CURVE DATA BASED ON Centerline RAD. $\Delta / 2 = 27^{\circ}30'00''$

STATION	ARC	CHORD LENGTH	CHORD BEARING	CHORD OFFSET	DEFLECTION	TOTAL DEFLECTION
12+73.32						00°00'00"
13+00.00	26.68'	24.32'	29.01'	03°03'26"	03°03'26"	03°03'26"
13+25.00	25.00'	22.79'	27.19'	02°51'53"	05°55'20"	05°55'20"
13+50.00	25.00'	22.79'	27.19'	02°51'53"	08°47'13"	08°47'13"
13+75.00	25.00'	22.79'	27.19'	02°51'53"	11°39'06"	11°39'06"
14+00.00	25.00'	22.79'	27.19'	02°51'53"	14°30'59"	14°30'59"
14+25.00	25.00'	22.79'	27.19'	02°51'53"	17°22'52"	17°22'52"
14+50.00	25.00'	22.79'	27.19'	02°51'53"	20°14'45"	20°14'45"
14+69.67	19.67'	17.93'	21.39'	02°15'14"	22°30'00"	22°30'00"


Def./Ft. = 6.8755 Min.

$\Delta = 45^{\circ}00'00''$ R = 120.00' T = 49.71' L = 94.25' LC = 91.84'

CURVE DATA BASED ON Centerline RAD. $\Delta / 2 = 22^{\circ}30'00''$

STATION	ARC	CHORD LENGTH	CHORD BEARING	CHORD OFFSET	DEFLECTION	TOTAL DEFLECTION
11+79.07						00°00'00"
12+00.00	20.93'	17.07'	24.74'	04°59'48"	04°59'48"	04°59'48"
12+25.00	25.00'	20.38'	28.53'	05°58'06"	10°57'54"	10°57'54"
12+50.00	25.00'	20.38'	28.53'	05°58'06"	16°56'00"	16°56'00"
12+73.32	23.32'	19.01'	27.55'	05°34'00"	22°30'00"	22°30'00"

Def./Ft. = 1.3239 Min.



CITY OF WICHITA
SHANNON WAY
PROJECT NO.
472-76-245-81593-000-000-001

Design: KHB FF
Drawn by: FF
Checked by: KHB
Date: DEC., 1986
Job No.

MID-KANSAS ENGINEERING CONSULTANTS PA
3500 NORTH ROCK ROAD
BUILDING #800
WICHITA, KANSAS 67226

682-6561

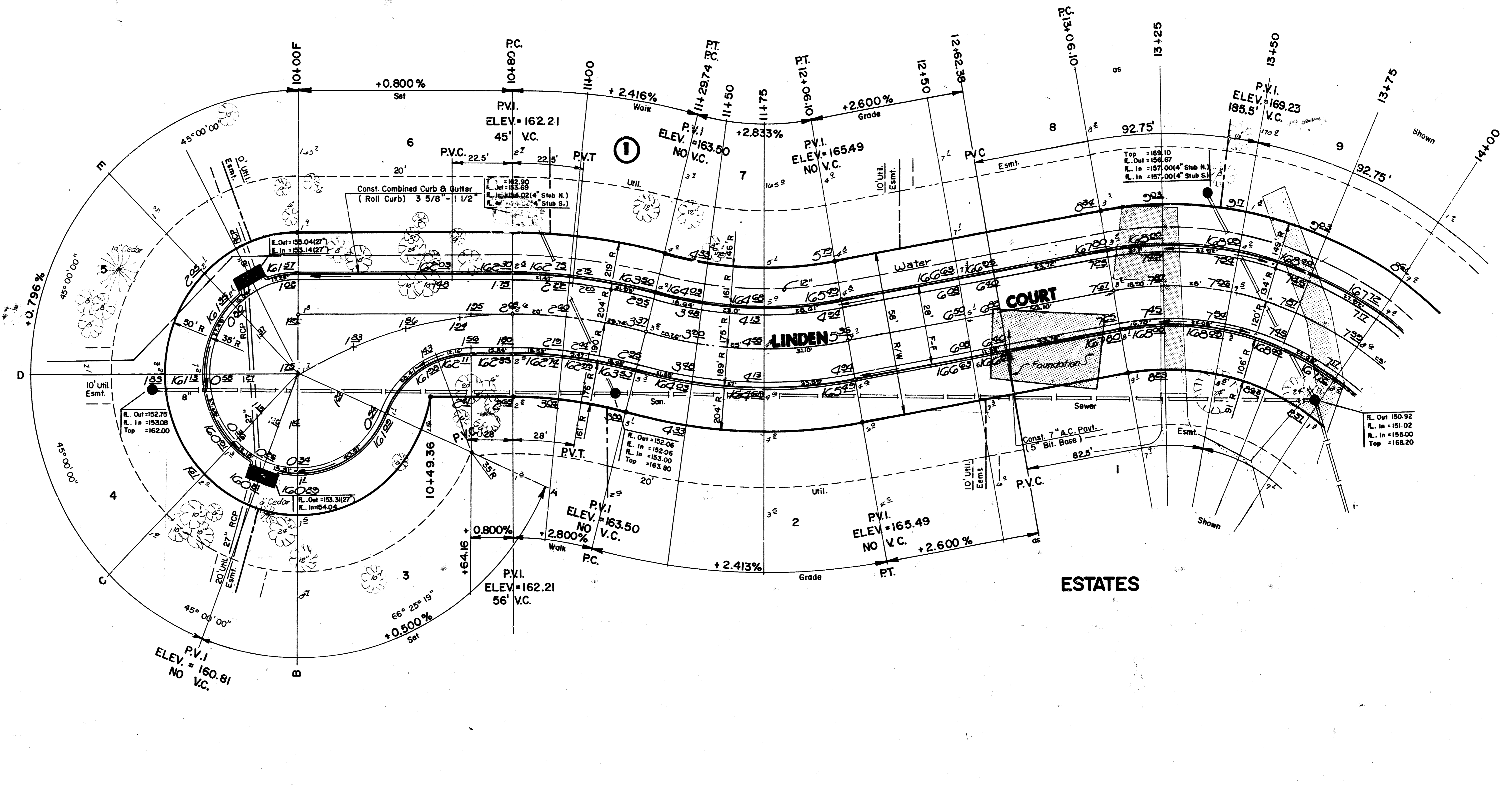
Sheet **5** of **20**



Scale: 1" = 20'

WOODLAND

NOTE:
Top Of Curb Elevations Shown For
Full Curb, Construct Combined Curo
& Gutter (Roll Type).



$\Delta = 25^{\circ}00'00''$ R = 175.00' T = 38.80' L = 76.36' LC = 75.75'

CURVE DATA BASED ON Centerline RAD. $\Delta / 2 = 12^{\circ}30'00''$

STATION	ARC	CHORD LENGTH		DEFLECTION	TOTAL DEFLECTION
		8' L. OFFSET	8' RT. OFFSET		
11+29.74	-	-	-	-	00°00'00"
11+50.00	20.26'	12.70'	22.79'	03°19'00"	03°19'00"
11+75.00	25.00'	21.34'	28.12'	04°05'33"	07°24'33"
12+06.10	31.10'	27.15'	34.96'	05°05'27"	12°30'00"
					Def./Ft. = 9.8221 Min.

$\Delta = 15^{\circ}00'00''$ R = 190.00' T = 25.01' L = 49.74' LC = 49.60'

CURVE DATA BASED ON Centerline RAD. $\Delta / 2 = 07^{\circ}00'00''$

STATION	ARC	CHORD LENGTH		DEFLECTION	TOTAL DEFLECTION
		8' L. OFFSET	8' RT. OFFSET		
10+80.00	-	-	-	-	00°00'00"
11+00.00	20.00'	22.31'	17.68'	03°00'56"	03°00'56"
11+29.74	29.74'	33.15'	26.27'	04°29'04"	07°30'00"
					Def./Ft. = 9.047 Min.

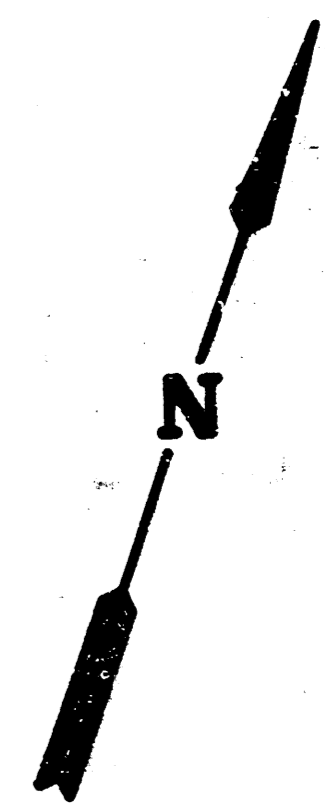


CITY OF WICHITA
LINDEN COURT
LOT 1 THRU 12 BLK. 1
PROJECT NO.
472-76-245-81593-000-000-001

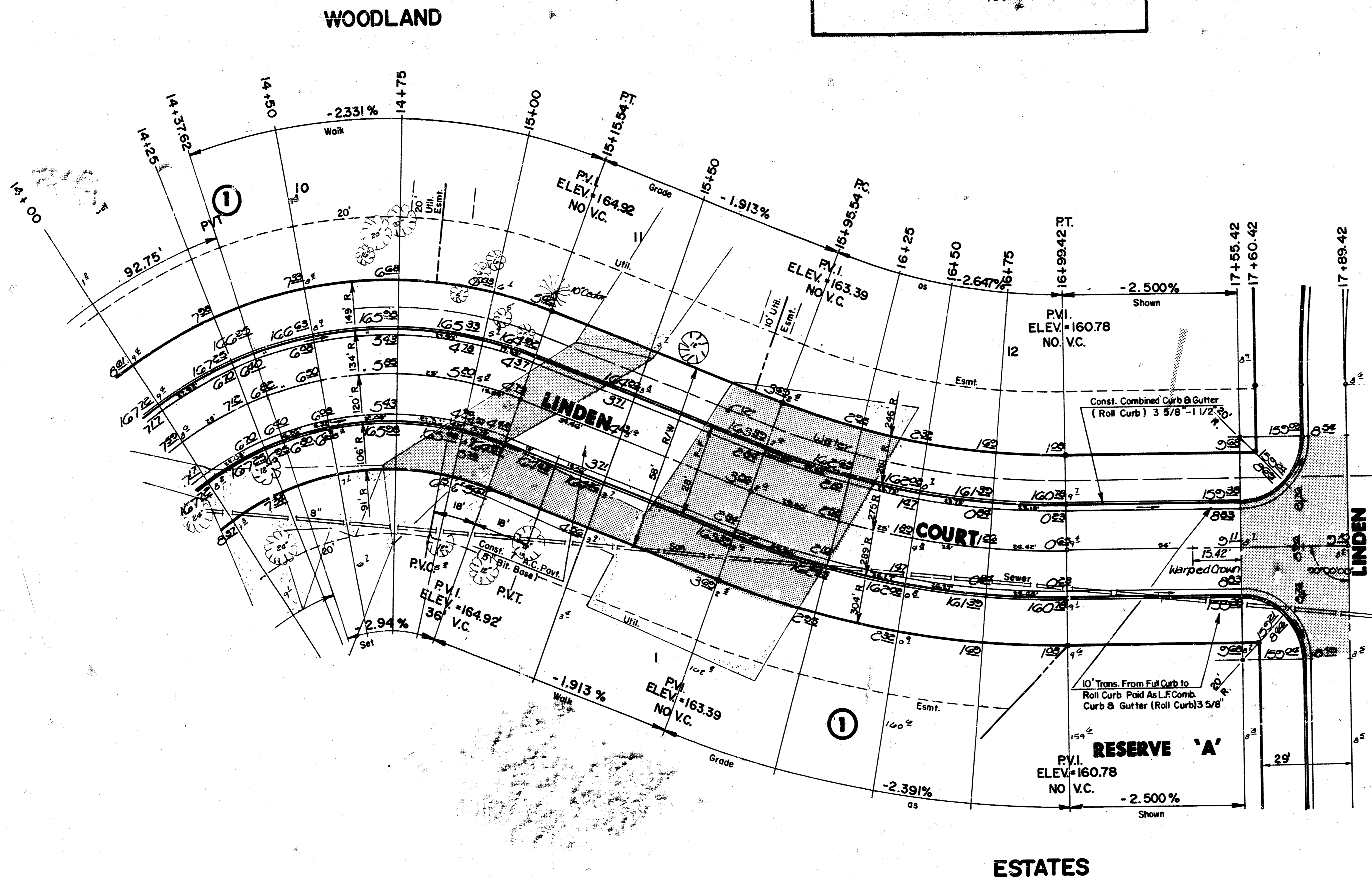
MID-KANSAS ENGINEERING CONSULTANTS PA
3500 NORTH ROCK ROAD
BUILDING #800
WICHITA, KANSAS 67226
682-6561

Design
FF
Drawn by
F F
Checked by
K.H.B.
Date
DEC., 1986
Job no.
Sheet
6
of
20

NOTE:
Top Of Curb Elevations Shown For Full Curb, Construct Combined Curb & Gutter (Roll Type).



Scale : 1" = 20'



$\Delta = 100^{\circ}00'00''$ R = 120.00' T = 143.01' L = 209.44 LC = 183.85'
CURVE DATA BASED ON Centerline RAD $\Delta / 2 = 50^{\circ}00'00''$

STATION	ARC	CHORD LENGTH		DEFLECTION	
		BLT. OFFSET	8" RT. OFFSET	DEFLECTION	TOTAL DEFLECTION
13+06.10					00°00'00"
13+25.00	18.90'	22.34'	15.42'	04°30'43"	04°30'43"
13+50.00	25.00'	29.53'	20.38'	05°58'06"	10°28'49"
13+75.00	25.00'	29.53'	20.38'	05°58'06"	16°26'55"
14+00.00	25.00'	29.53'	20.38'	05°58'06"	22°25'01"
14+25.00	25.00'	29.53'	20.38'	05°58'06"	28°23'07"
14+50.00	25.00'	29.53'	20.38'	05°58'06"	34°21'13"
14+75.00	25.00'	29.53'	20.38'	05°58'06"	40°19'19"
15+00.00	25.00'	29.53'	20.38'	05°58'06"	46°17'25"
15+15.54	15.54'	18.38'	12.68'	03°42'35"	50°00'00"

Def./Ft. = 14.3239 Min.

$\Delta = 21^{\circ}38'32''$ R = 275.00' T = 52.56' L = 103.88 LC = 103.26'
CURVE DATA BASED ON Centerline RAD $\Delta / 2 = 10^{\circ}49'16''$

STATION	ARC	CHORD LENGTH		DEFLECTION	
		BLT. OFFSET	8" RT. OFFSET	DEFLECTION	TOTAL DEFLECTION
15+95.54					00°00'00"
16+25.00	29.46'	27.09'	31.80'	03°04'08"	03°04'08"
16+50.00	25.00'	22.99'	26.99'	02°36'16"	05°40'24"
16+75.00	25.00'	22.99'	26.99'	02°36'16"	08°16'40"
16+99.42	24.42'	22.46'	26.36'	02°32'38"	10°49'16"

Def./Ft. = 6.2504 Min.

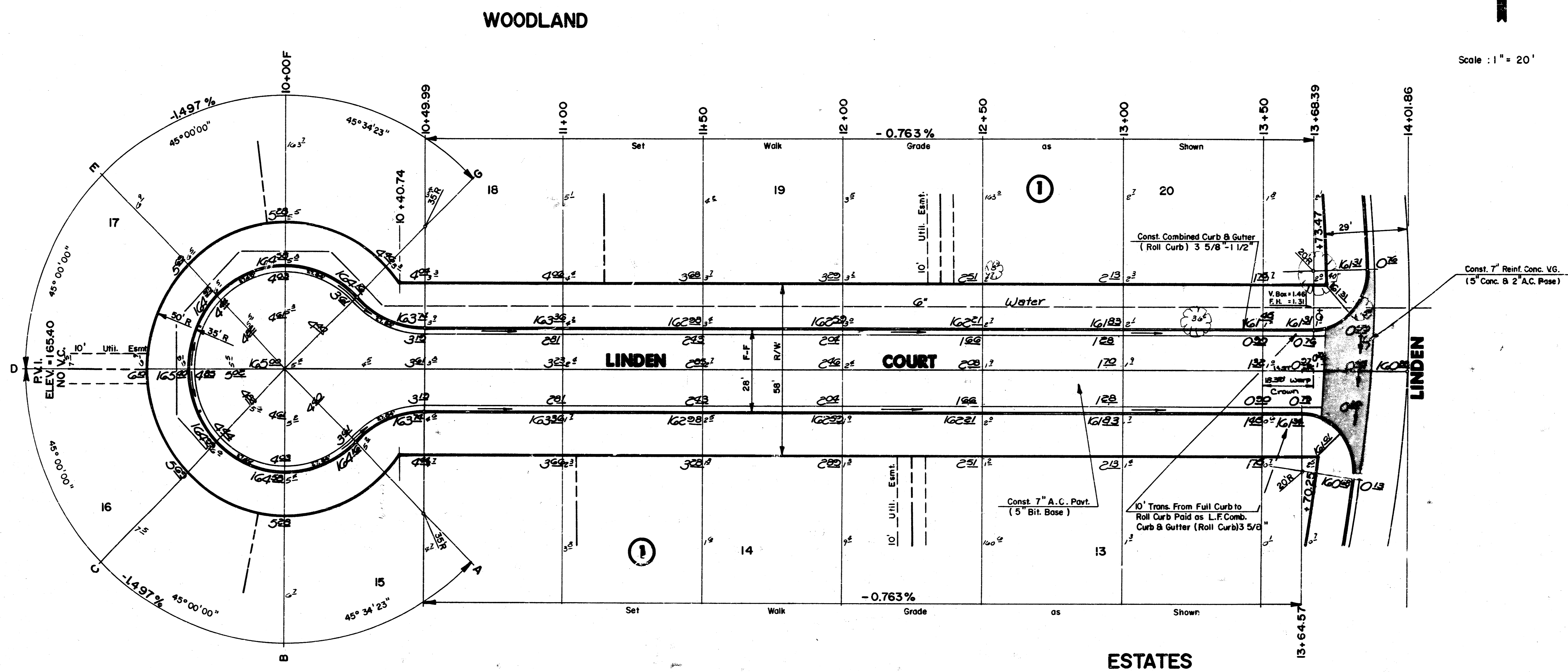
- LINDEN & LINDEN COURT (1-12)
INTERSECTION QUANTITIES
- ___ S.Y. ___ Concrete Pavement
 - 172.4 S.Y. 7" Asphaltic Conc. Pavement (5" Bituminous Base)
 - 18.6 S.Y. 2 1/2" Bituminous Base
 - 62.8 L.F. Combined Curb & Gutter
 - ___ L.F. Integral Curb
 - ___ S.F. 4" Wheelchair Ramp
 - ___ S.F. 4" Walk
 - ___ C.Y. Excavation
 - ___ C.Y. Compacted Fill
 - ___ Lbs. Reinforcing Steel
 - 181.2 S.Y. Manipulation
 - ___ Tons Lime or Cement
 - ___ S.Y. V.G. ___ Concrete & ___ Asphaltic Concrete Base

	CITY OF WICHITA	Design KHB
	LINDEN COURT LOT 1 THRU 12 BLK. 1	Drawn by P.F.
	PROJECT NO 472-76-245-91593-000-000-001	Checked by K.H.B.
MID-KANSAS ENGINEERING CONSULTANTS PA 3500 NORTH ROCK ROAD BUILDING #800 WICHITA, KANSAS 67226	682-6561	Date DEC., 1986 Job no.
		Sheet 7 of 20

NOTE:
Top Of Curb Elevations Shown For Full Curb, Construct Combined Curb & Gutter (Roll Type).



Scale : 1" = 20'



**LINDEN COURT LOT 13-20
AND LINDEN
INTERSECTION QUANTITIES**

—	S.Y.	Concrete Pavement
—	S.Y.	7" Asphaltic Conc. Pavement (5" Bituminous Base)
—	S.Y.	Bituminous Base
—	L.F.	Combined Curb & Gutter
53.4	L.F.	Monolithic Edge Curb (6 5/8")
—	S.F.	4" Wheelchair Ramp
—	S.F.	4" Walk
—	C.Y.	Excavation
—	C.Y.	Compacted Fill
—	Lbs.	Reinforcing Steel
188.9	S.Y.	Manipulation
—	Tons	Lime or Cement
90.2	S.Y.	V.G. 5" Concrete & 2" Asphaltic Concrete Base



CITY OF WICHITA
LINDEN COURT
LOT 13 THRU 20 BLK. I
PROJECT NO.
472-76-245-81593-000-000-001

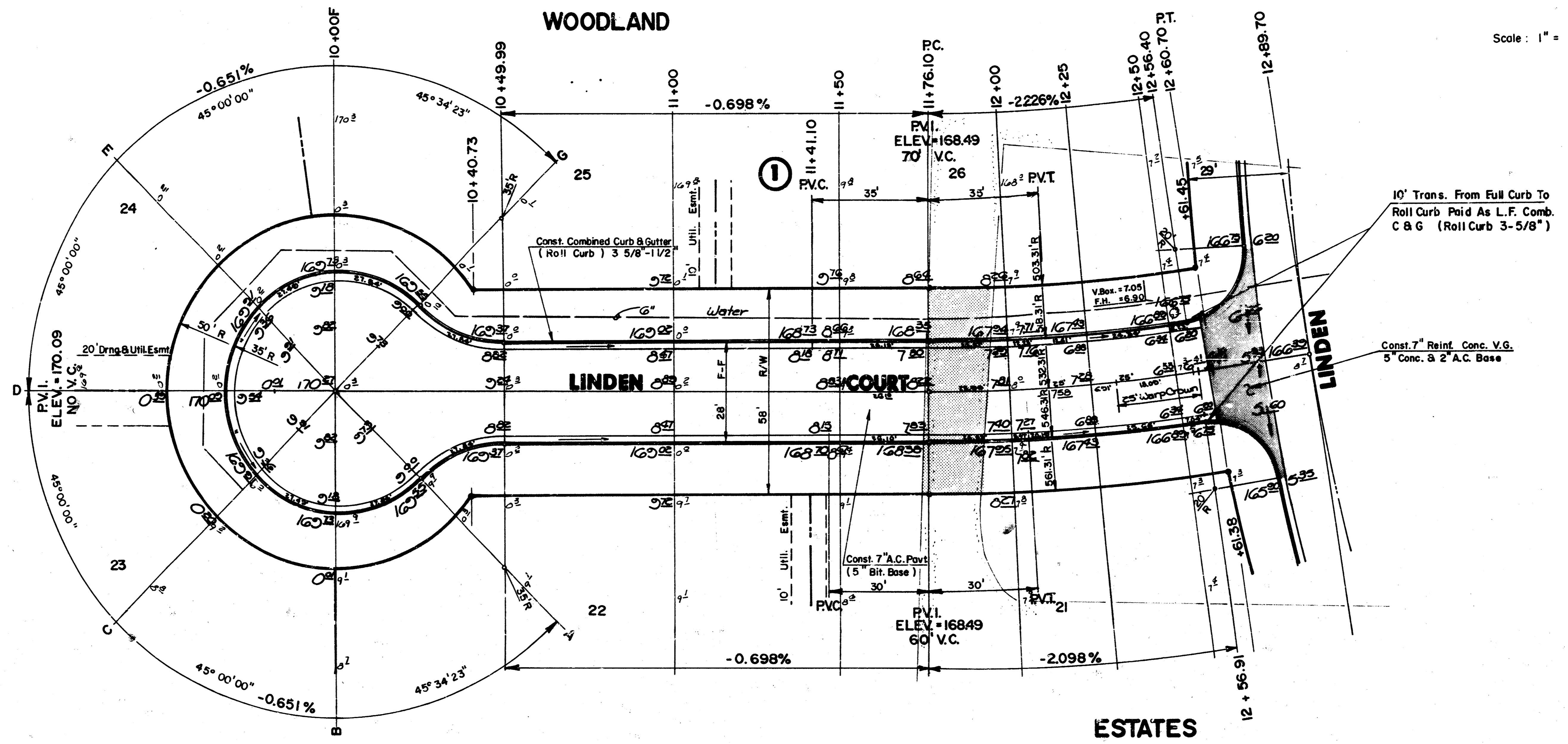
Design
FF
Drawn by
FF
Checked by
KHB / DSS
Date
DEC. 1986
100%

MID-KANSAS ENGINEERING CONSULTANTS PA
3500 NORTH ROCK ROAD
BUILDING #800
WICHITA, KANSAS 67226

Sheet
8
of 20

NOTE:
Top Of Curb Elevations Shown For
Full Curb, Construct Combined Curb
& Gutter (Roll Type).

Scale: 1" = 20'



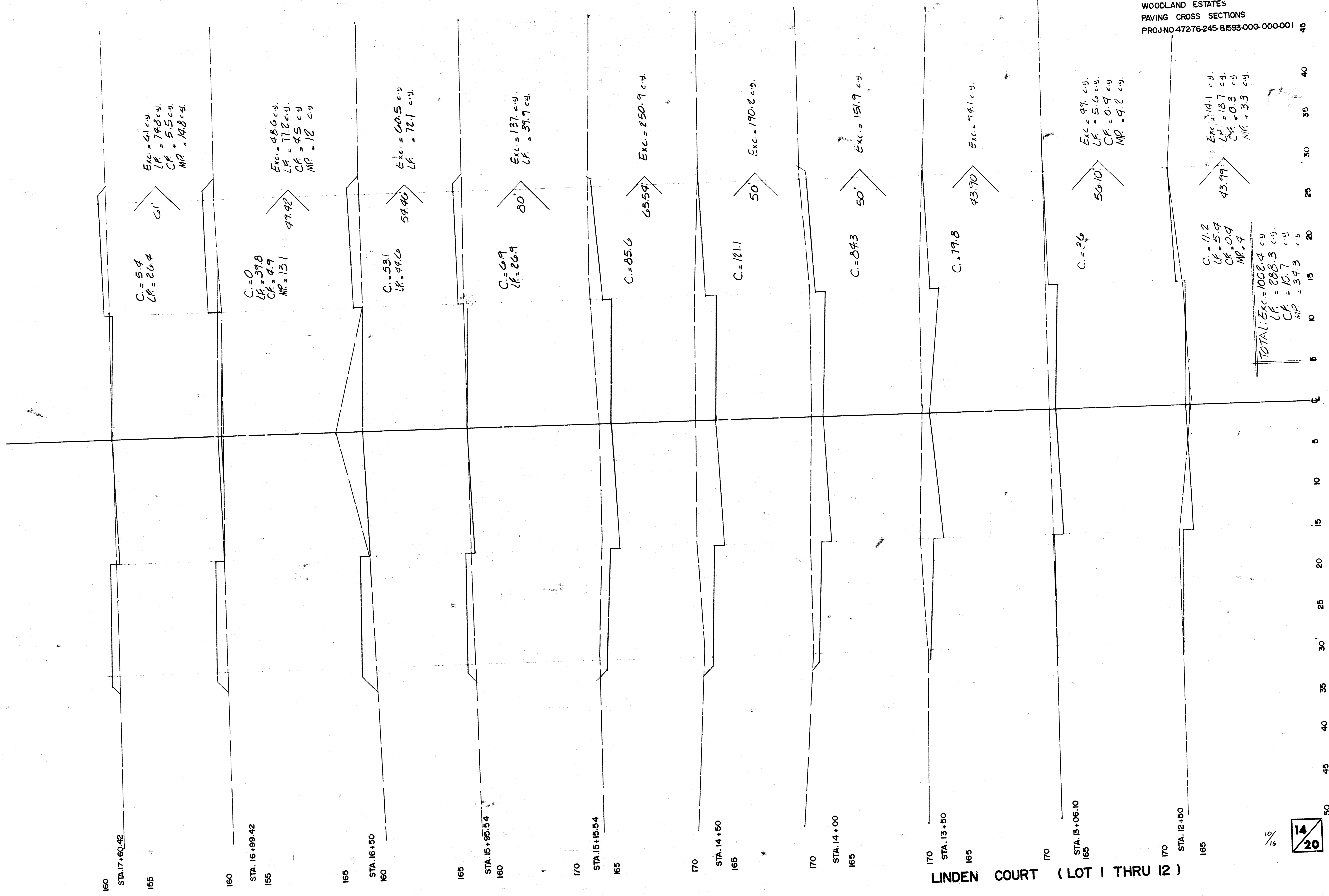
$\Delta = 09^{\circ}06'21''$ R = 532.31' T = 42.39' L = 84.60' LC = 84.51'

CURVE DATA BASED ON Centerline RAD. $\Delta / 2 = 04^{\circ}33'11''$

STATION	ARC	CHORD LENGTH			DEFLECTION	TOTAL DEFLECTION
		BL OFFSET	Rt. OFFSET	DEFLECTION		
11+76.10	-	-	-	-	00°00'00"	
12+00.00	23.90	22.91'	24.89'	01°17'11"	01°17'11"	
12+25.00	25.00'	23.97'	26.03'	01°20'44"	02°37'55"	
12+50.00	25.00'	23.97'	26.03'	01°20'44"	03°58'39"	
12+56.40	6.40'	6.14'	6.66'	00°20'40"	04°19'19"	
12+56.91	0.51'	0.49'	0.53'	00°01'39"	04°20'58"	
12+60.70	3.79'	3.63'	3.95'	00°12'14"	04°33'11"	
				Def./Ft. =	3.2291 Min	

- LINDEN COURT LOT 21-26
AND LINDEN
INTERSECTION QUANTITIES
- S.Y. Concrete Pavement
 - 88.1 S.Y. 7" Asphaltic Conc. Pavement (5" Bituminous Base)
 - S.Y. Bituminous Base
 - .F. Combined Curb & Gutter
 - 49.5 L.F. Monolithic Edge Curb (6 5/8")
 - S.F. 4" Wheelchair Ramp
 - S.F. 4" Walk
 - C.Y. Excavation
 - C.Y. Compacted Fill
 - Lbs. Reinforcing Steel
 - 170.6 S.Y. Manipulation
 - Tons Lime or Cement
 - 78.9 S.Y. V.G. 5" Concrete & 2" Asphaltic Concrete Base

	CITY OF WICHITA	Design
	LINDEN COURT LOT 21 THRU 26 BLK. I PROJECT NO. 472-76-245-81593-000-000	Checked by
		Date
MID-KANSAS ENGINEERING CONSULTANTS PA 3500 NORTH ROCK ROAD BUILDING #800 WICHITA, KANSAS 67226	682-6561	Sheet 9 of 20

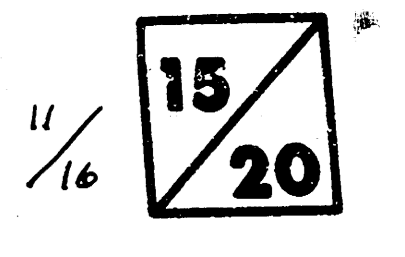


LINDEN COURT (LOT 1 THRU 12)



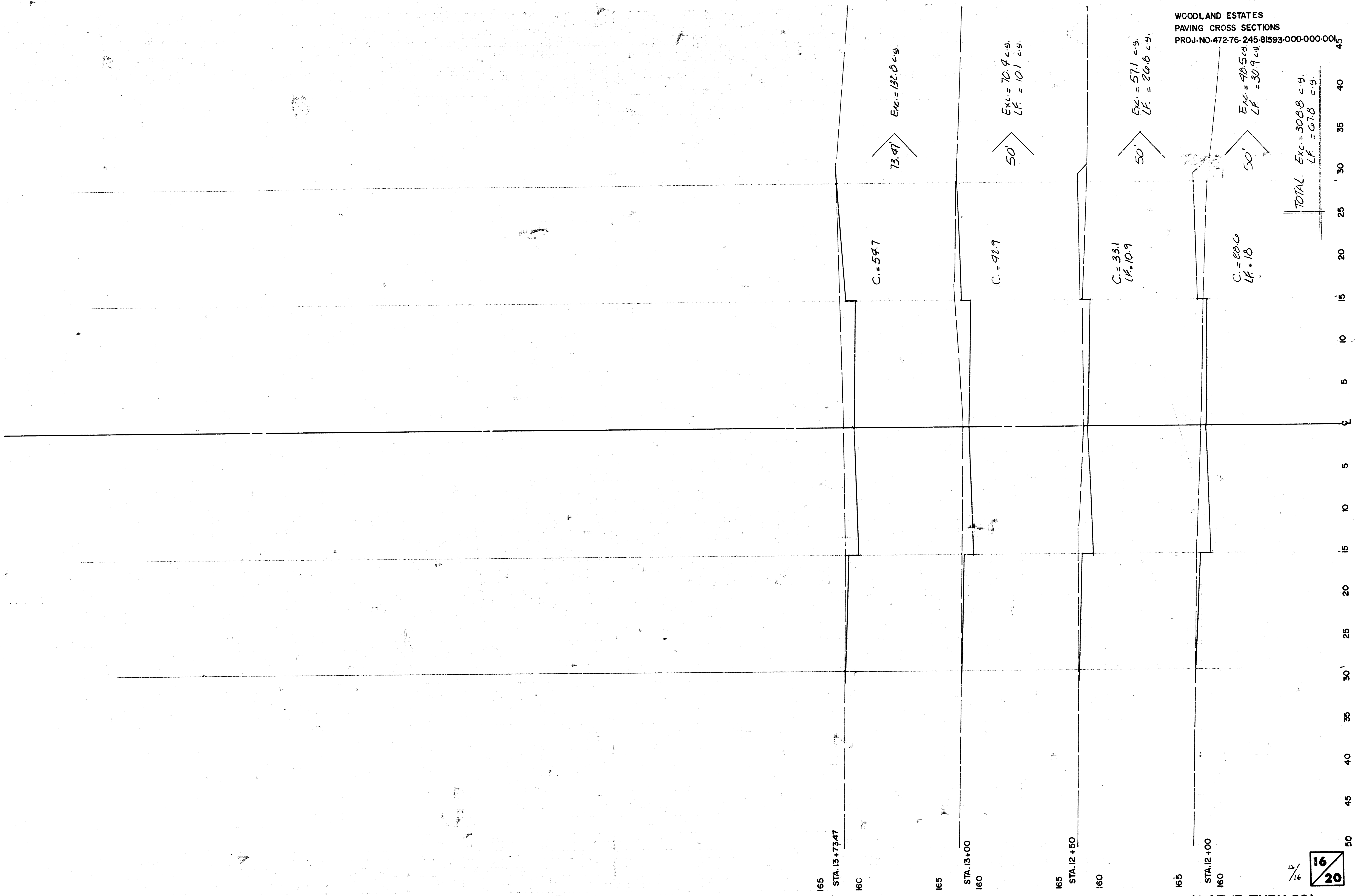
TOTAL: Exc. = 474.8 c.y.
 LF = 40.4 c.y.

LINDEN COURT (LOT 1 THRU 12)

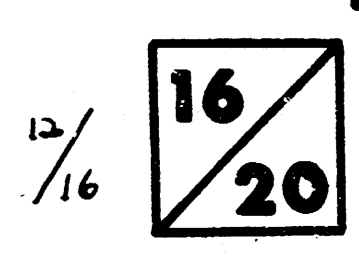


50
45
40
35
30
25
20
15
10
5
0

WOODLAND ESTATES
PAVING CROSS SECTIONS
PROJ. NO. 472-76-245-81593-000-000-001



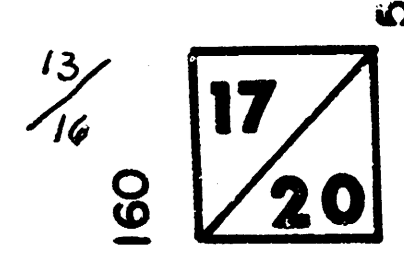
TOTAL Exc. = 308.8 c.y.
LF = 67.8 c.y.



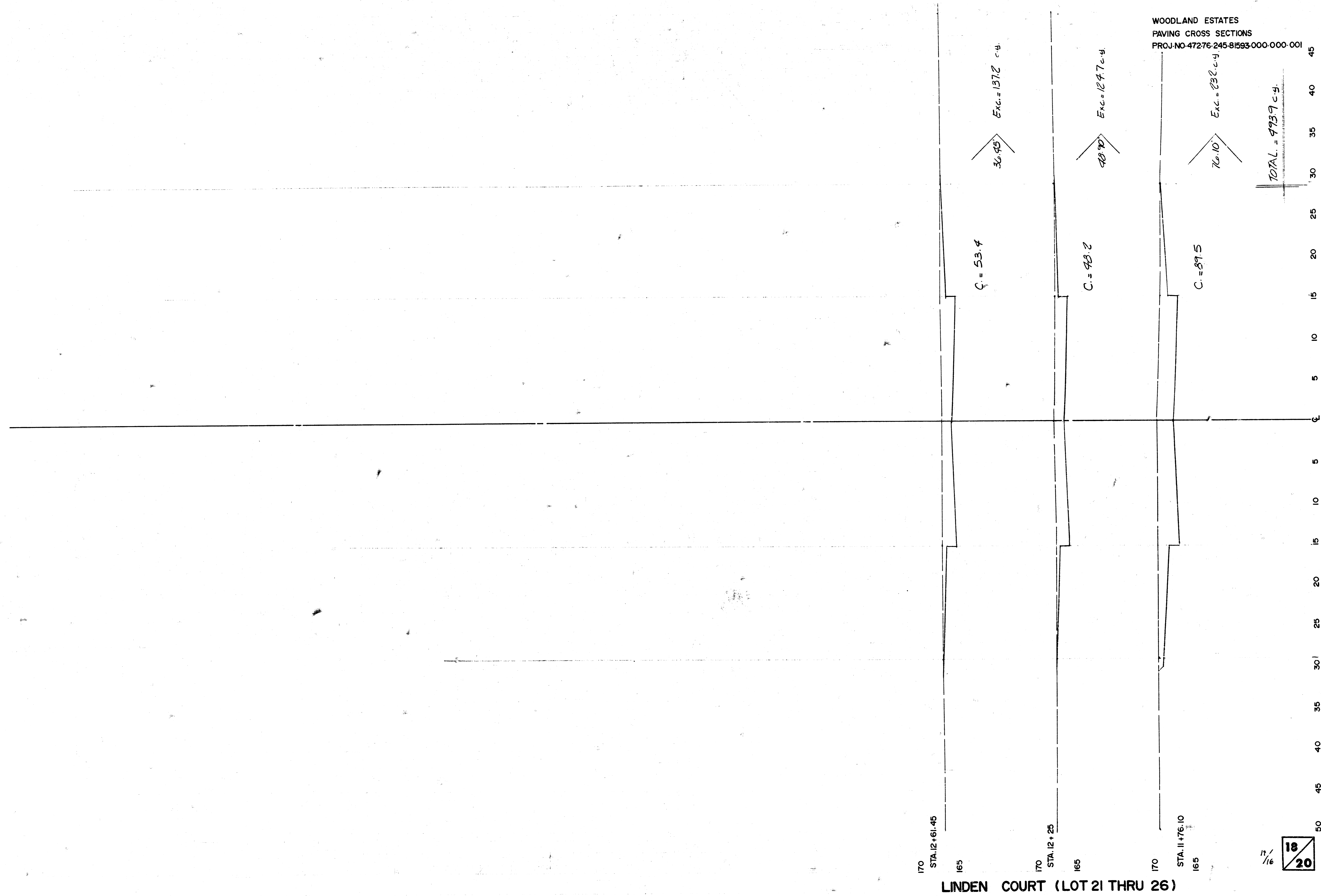
LINDEN COURT (LOT 13 THRU 20)



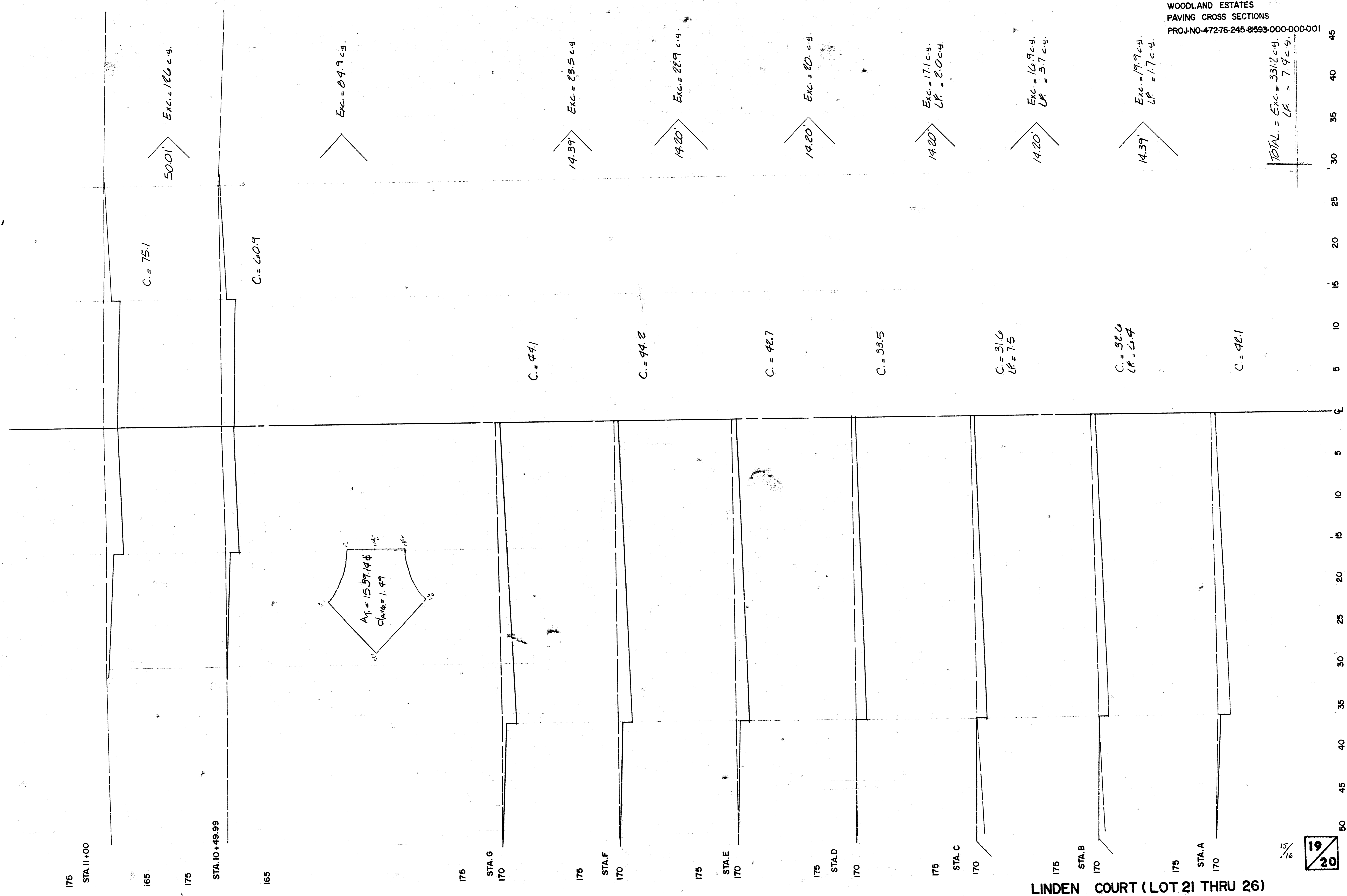
LINDEN COURT (LOT 13 THRU 20)



WOODLAND ESTATES
PAVING CROSS SECTIONS
PROJ. NO. 47276.245-81593.000-000-001



LINDEN COURT (LOT 21 THRU 26)

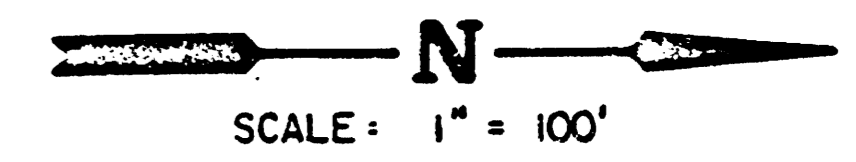
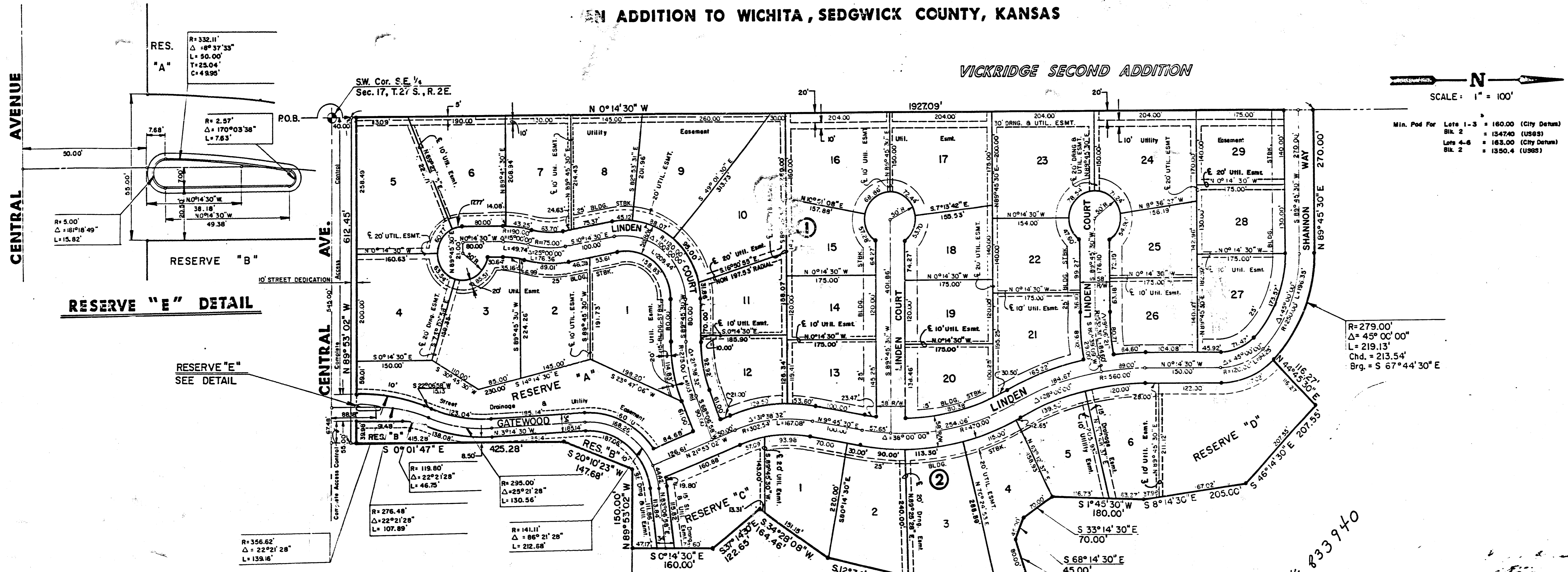


LINDEN COURT (LOT 21 THRU 26)

FINAL PLAT OF WOODLAND ESTATES

AN ADDITION TO WICHITA, SEDGWICK COUNTY, KANSAS

VICKRIDGE SECOND ADDITION



Min. Plat Fee	Lots 1-3	= 160.00 (City Detent)
	Blk. 2	= 1347.00 (US69)
	Lots 4-6	= 163.00 (City Detent)
	Blk. 2	= 1350.4 (US69)

RESERVE "E" DETAIL

RESERVE "E" SEE DETAIL

I, Kenneth H. Bengtson, a Civil Engineer in Kansas, do hereby certify that I have been in responsible charge of surveying and platting of "WOODLAND ESTATES" an addition to Wichita, Sedgwick County, Kansas, into Lots, Blocks, Reserves, and Streets, the same being accurately set forth in the accompanying plat and described herein:

A tract of land lying in the Southeast Quarter of Section 17, Township 27 South, Range 2 East of the 6th P.M., more particularly described as follows:

Beginning at a point 40.00 feet North and on the West line of said Southeast Quarter; thence N 0° 14' 30" W, 1927.09 feet; thence N 89° 45' 30" E, 270.00 feet to a point on a curve to the right having a central angle of 45° 00' 00", a radius of 279.00 feet, and a long chord of 213.54 feet bearing S 67° 44' 30" E; thence along said curve a distance of 219.13 feet; thence N 44° 45' 30" E, 116.27 feet; thence S 46° 14' 30" E, 207.55 feet; thence S 8° 14' 30" E, 205.00 feet; thence S 1° 45' 30" W, 180.00 feet; thence S 33° 14' 30" E, 70.00 feet; thence S 68° 14' 30" E, 45.00 feet; thence N 71° 45' 30" E, 80.00 feet; thence S 17° 00' 00" E, 95.00 feet; thence S 21° 45' 30" W, 81.02 feet; thence S 1° 45' 30" W, 72.87 feet; thence S 12° 34' 49" W, 162.76 feet; thence S 34° 28' 08" W, 164.46 feet; thence S 37° 14' 30" E, 122.65 feet; thence S 0° 14' 30" E, 160.00 feet; thence N 89° 53' 02" W, 150.00 feet; thence S 20° 10' 23" W, 147.68 feet; thence S 0° 01' 47" E, 425.28 feet to a point 40.00 feet North of the South line of said Southeast Quarter; thence N 89° 53' 02" W, 612.45 feet, parallel with the South line of said Southeast Quarter to the point of beginning.

I hereby certify that the details of this plat are correct to the best of my knowledge and belief this 20th day of August, 1986.

Kenneth H. Bengtson
Kenneth H. Bengtson, P.E.
Mid-Kansas Engineering Consultants, P.A.
3500 N. Rock Road, Building #800



Know all men by these presents that we the undersigned property owners of the land as above set forth in the Civil Engineers Certificate, have caused the same to be surveyed and platted into lots, blocks, streets and reserves, the same to be known as "WOODLAND ESTATES" an addition to Wichita, Sedgwick County, Kansas. The streets are hereby dedicated to and for the use of the public. Easements for the construction and maintenance of street, drainage and public utilities as indicated on the accompanying plat are hereby granted. Reserves "A", "B" & "C" are being platted for construction and maintenance of public utilities, drainage, landscaping, walks, open space and entry monuments. Reserve "E" is platted for landscaping. Reserve "D" is being platted for construction and maintenance of public utilities, drainage, landscaping and irrigation. The Reserves shall be owned and maintained by the Homeowners Association. Minimum pad elevation on Lots 1 through 6 inclusive, Block 2 shall be as indicated on the face of the plat. All abutters right of access to or from the North line of Central Avenue over and across the South lines of Lots 4 and 5 Block 1, Reserve A, and Reserve B of "Woodland Estates" are hereby granted to the City of Wichita.

ITCHIE ASSOCIATES, INC., a Kansas Corporation
Jack D. Ritchie
Jack D. Ritchie, President

STATE OF KANSAS) ss:
SEDGWICK COUNTY)

Be it remembered that on this 20th day of August, 1986, before me a Notary Public in and for said State and County, came Ritchie Associates, Inc., by Jack D. Ritchie, President, to me personally known to be the same person who executed the foregoing instrument of writing and duly acknowledged the execution of the same. In testimony whereof I have hereunto set my hand and affixed my notarial seal the day and year above written.

Teresa A. Niles
Teresa A. Niles
My Appointment Expires: _____, Notary Public

This plat of "WOODLAND ESTATES" has been submitted to and approved by the Wichita-Sedgwick County Metropolitan Area Planning Commission, Wichita, Kansas.

Dated this 7th day of August, 1986.

WICHITA-SEDGWICK COUNTY METROPOLITAN AREA PLANNING COMMISSION
David Bayouth Vice-Chairman
Michael E. Lindbeck Secretary
Michael E. Lindbeck

This plat approved and all dedications shown hereon, if any, accepted by the City Commission of the City of Wichita, Kansas, this 22nd day of September, 1986.

Tony Casao Mayor
Donald G. Gistick City Clerk

Entered on transfer record this 22 day of September, 1986.

Don Wright
Don Wright, County Clerk

STATE OF KANSAS)
SEDGWICK COUNTY)

This is to certify that this instrument was filed for record in the Register of Deeds office this 22nd day of September, 1986.

Pat Kettler
Pat Kettler, Register of Deeds

Ed Resa
Ed Resa, Deputy



2070

C-1 3-28

16/16
20/20