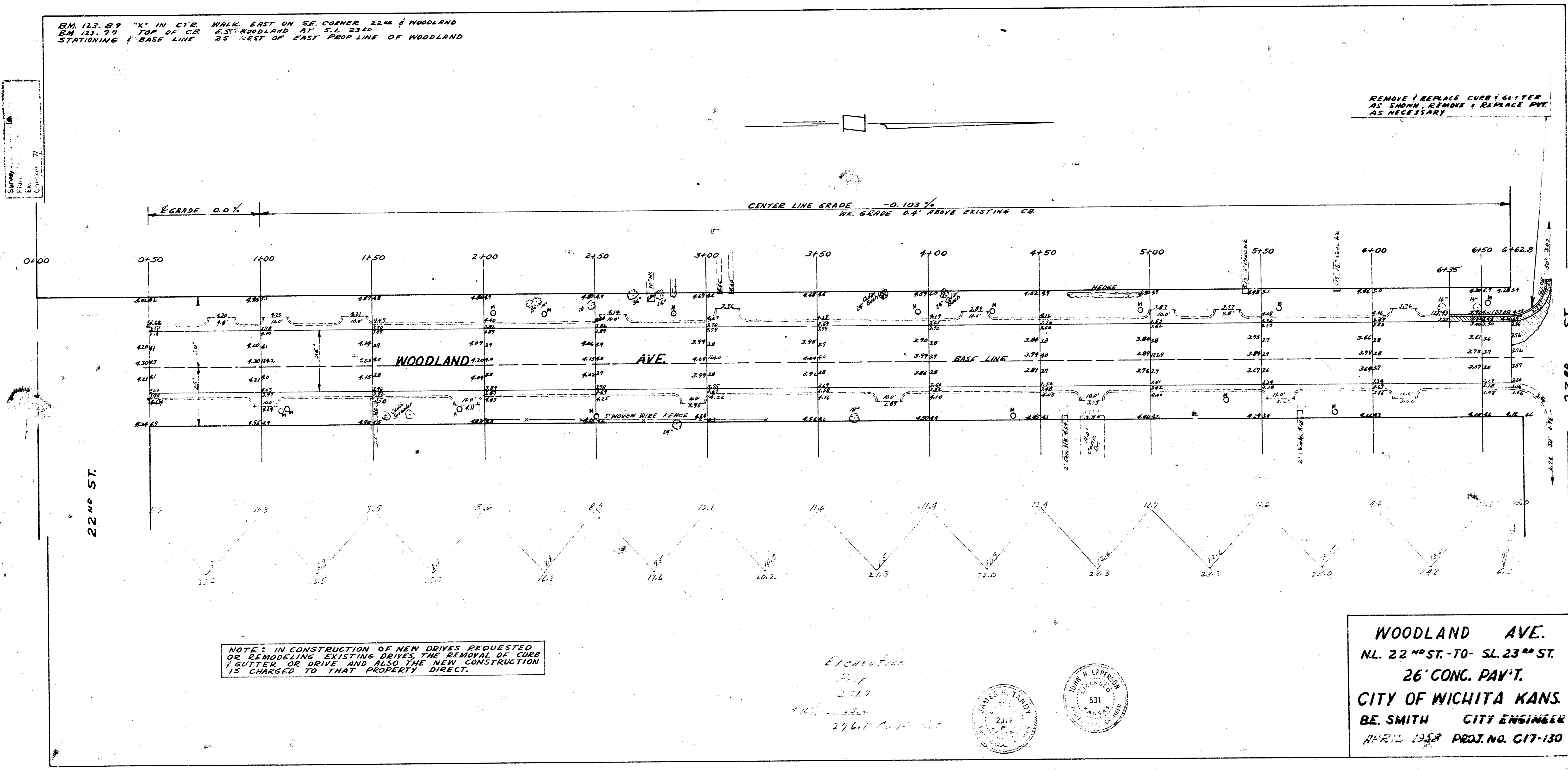


BM 123.89 "X" IN C.Y.D. WALK EAST ON SE CORNER 22<sup>ND</sup> & WOODLAND  
 BM 121.72 TOP OF C.C. E.S. WOODLAND AT S.L. 23<sup>RD</sup>  
 STATIONING & BASE LINE 25' WEST OF EAST PROP. LINE OF WOODLAND

REMOVE & REPLACE CURB & GUTTER  
 AS SHOWN. REMOVE & REPLACE PAV.  
 AS NECESSARY



NOTE: IN CONSTRUCTION OF NEW DRIVES REQUESTED  
 OR REMODELING EXISTING DRIVES, THE REMOVAL OF CURB  
 & GUTTER OR DRIVE AND ALSO THE NEW CONSTRUCTION  
 IS CHARGED TO THAT PROPERTY DIRECT.

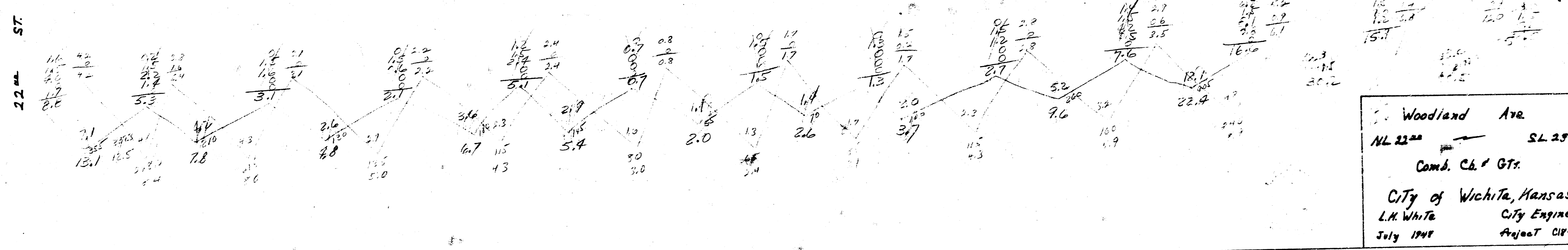
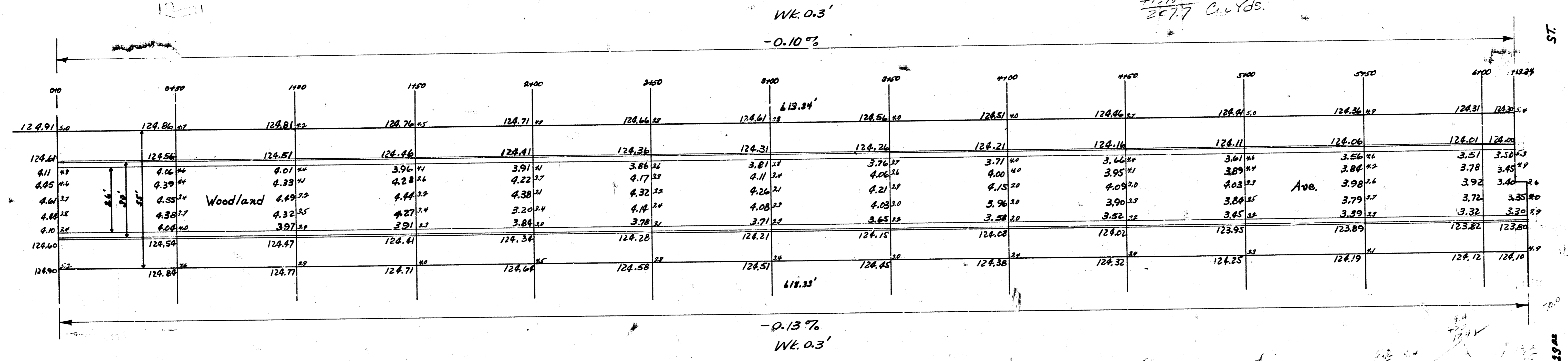
Elevation  
 2.17  
 2.17  
 2.17  
 2.17



WOODLAND AVE.  
 NL. 22<sup>ND</sup> ST. - TO - SL. 23<sup>RD</sup> ST.  
 26' CONC. PAV'T.  
 CITY OF WICHITA KANS.  
 BE. SMITH CITY ENGINEER  
 APRIL 1958 PROJ. NO. C17-130

B.M. 123.89 X' in C.F. W.A. E. SE. Cor. 22nd & Woodland

Property 15' width  
 Prop. 15' width  
 City 15' width  
 12.1  
 7.5  
 4.3  
 6.7  
 5.2  
 2.0  
 2.4  
 4.3  
 3.7  
 1.6  
 22.4  
 50.2  
 60.5  
 166.0  
 +137.7  
 203.7 Cu.Yds.



Woodland Ave  
 NL 22nd SL 25th  
 Comb. Cb. & G.T.  
 City of Wichita, Kansas  
 L.M. White City Engineer  
 July 1948 Project C18-85