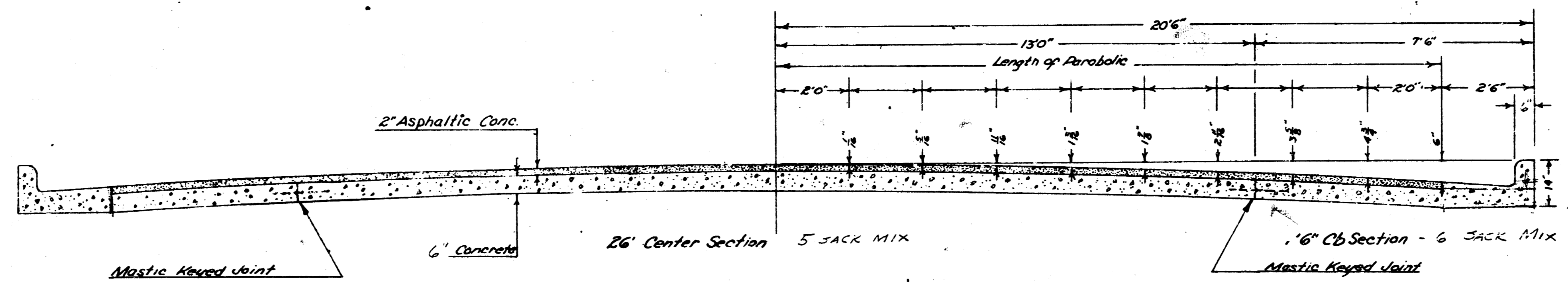
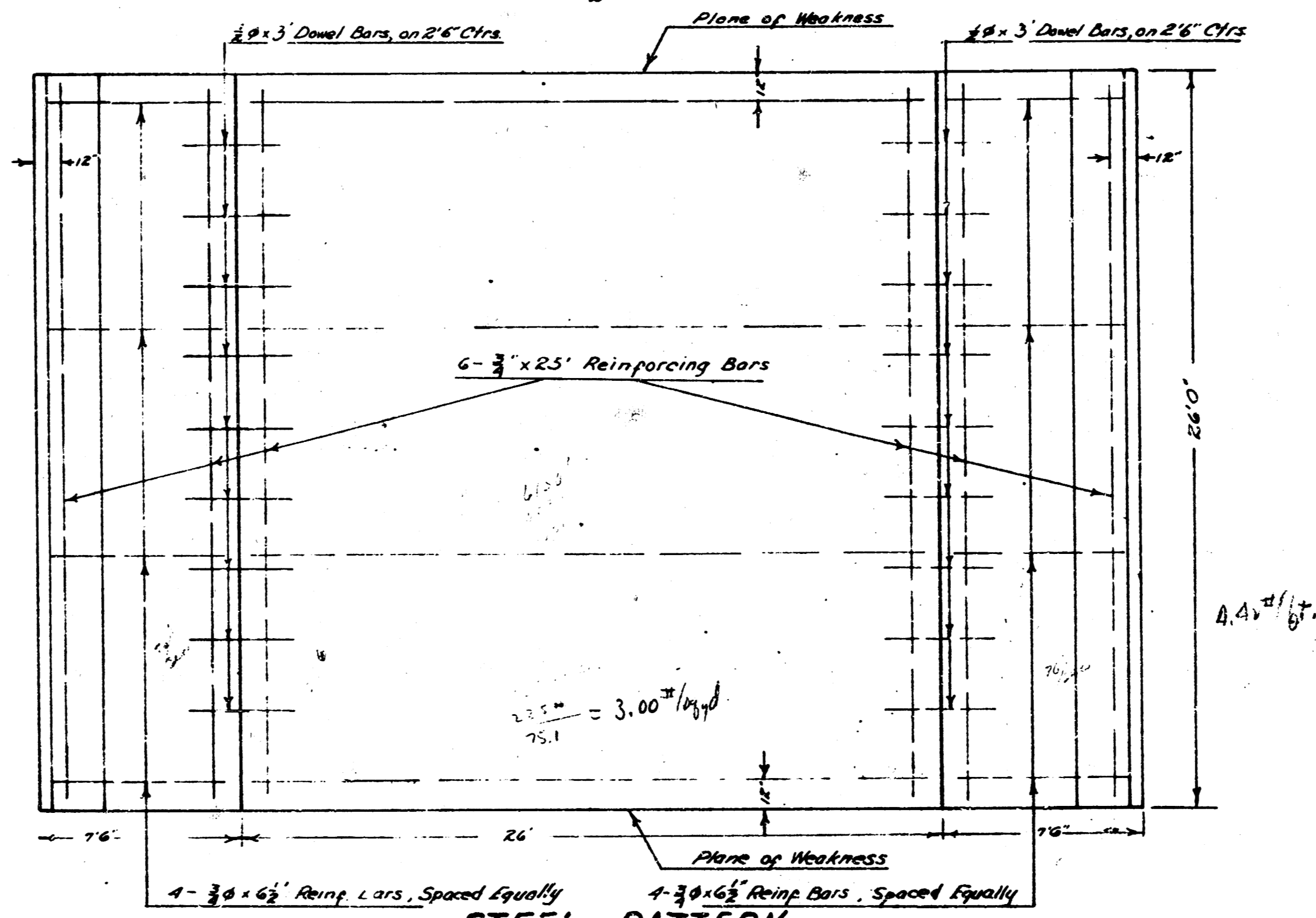


WOODLAWN
 N. LINCOLN TO S. L. ALLEY S. HUNTER



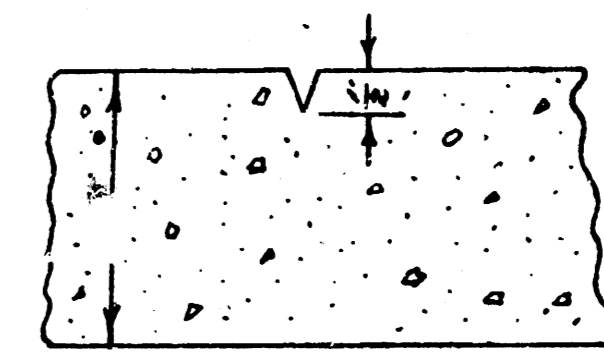
TYPICAL SECTION

Scale $\frac{1}{2}'' = 1'$

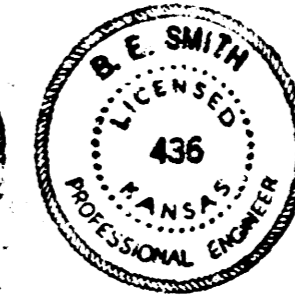
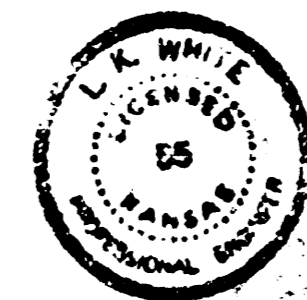


STEEL PATTERN

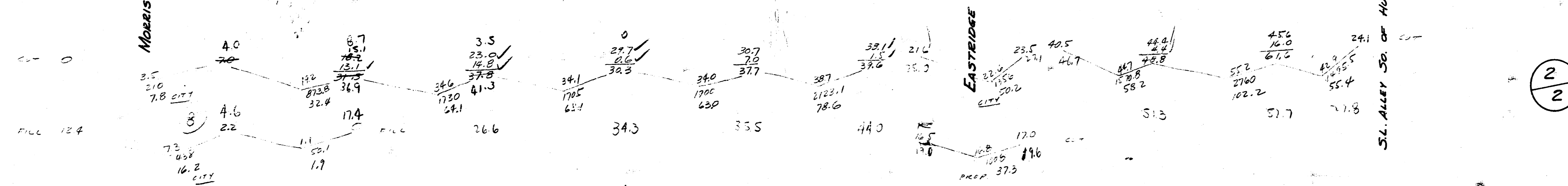
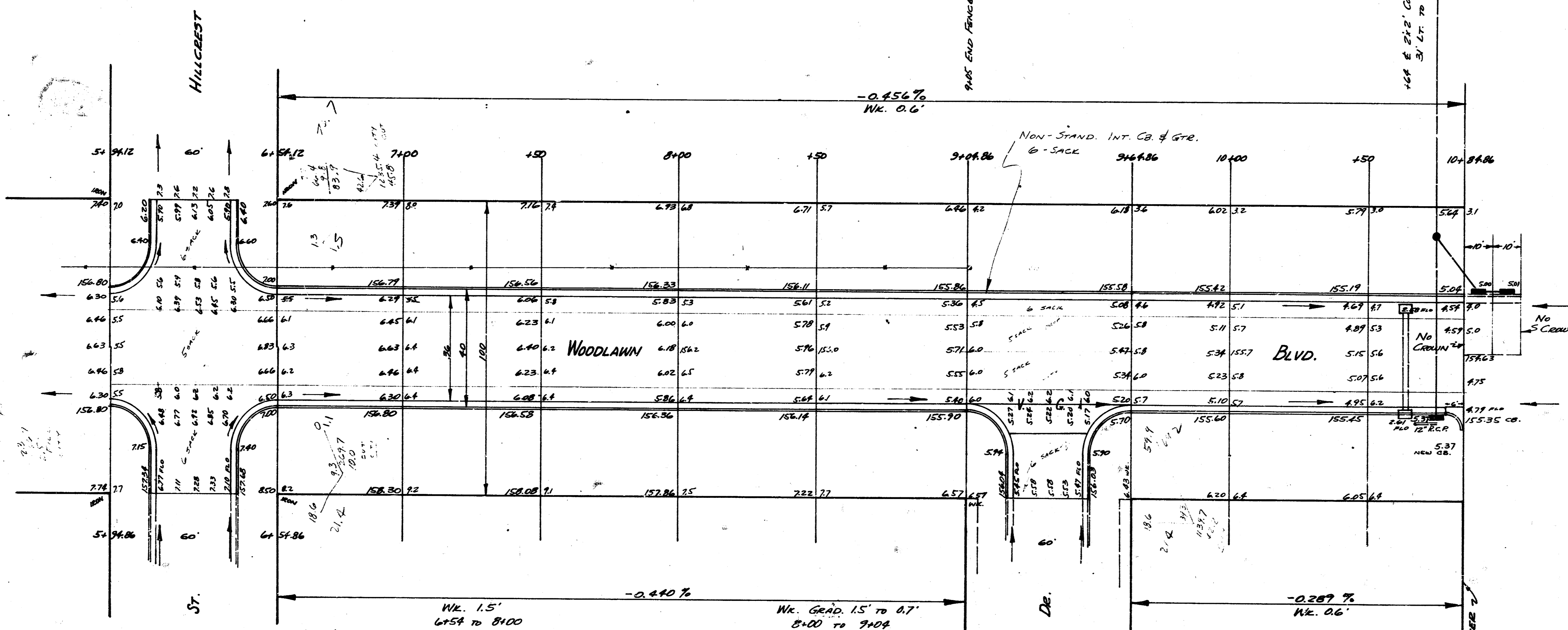
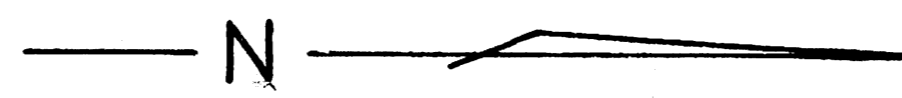
Scale $\frac{1}{4}'' = 1'$



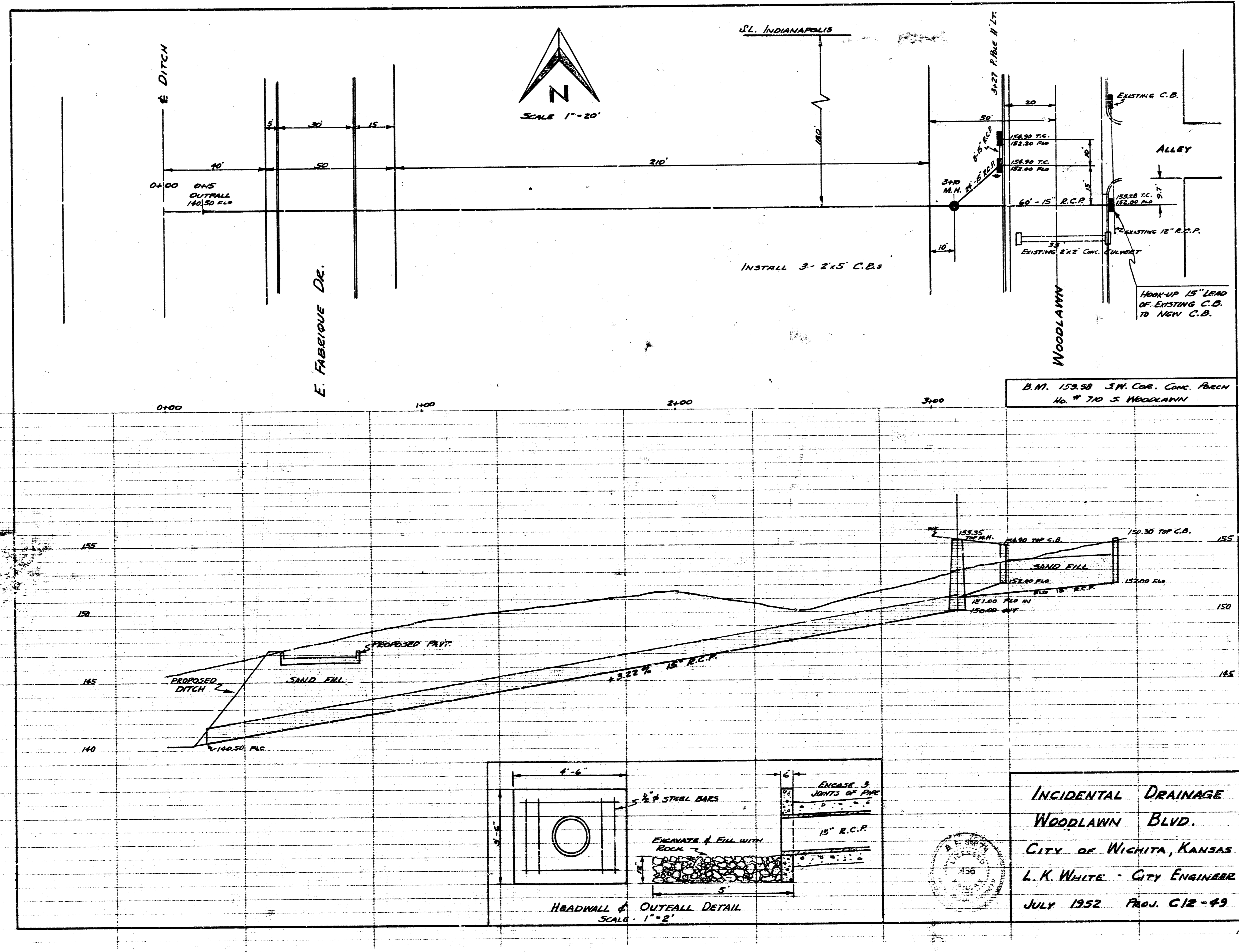
Detail Plane of Weakness
 Plane of Weakness to be cut with
 Double-Ridge Groover to Depth as
 Shown in a Straight Line from
 Curb to Curb 24\"/>



B.M. 153.40 STANDARD N.E. COR. WOODLAWN & LINCOLN
B.M. 160.07 S.W. COR. CONC. PAVEN. H. # 710 S. WOODLAWN



2/2



SCALE 1"=20'

W. INDIANAPOLIS

± DITCH

E. FABRIQUE DE.

WOODLAWN

EXISTING C.B.

ALLEY

HOOK-UP 15" LEAD
OF EXISTING C.B.
TO NEW C.B.

INSTALL 3-2x5 C.B.s

B.M. 152.58 S.W. COR. CONC. PAVEN
NO. 710 S. WOODLAWN

HEADWALL & OUTFALL DETAIL
SCALE 1"=2'

