

PAVING PLANS FOR WOODROW

WOODROW: FROM THE NORTH LINE OF 32ND ST. NORTH TO THE NORTH LINE OF J.E. SANBORNS REPLAT OF PART OF RUSSELL TRACTS

PROJECT NO.
472-76-245-81606-000-000-001

CITY OF WICHITA, KANSAS
MICHAEL E. LINDEBAK, CITY ENGINEER
DECEMBER, 1986

GENERAL NOTES

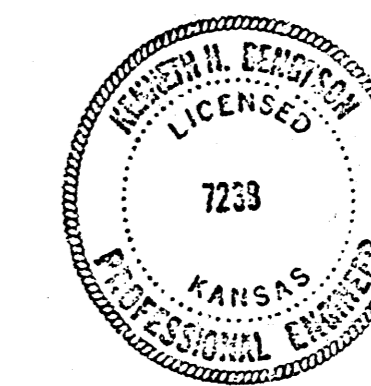
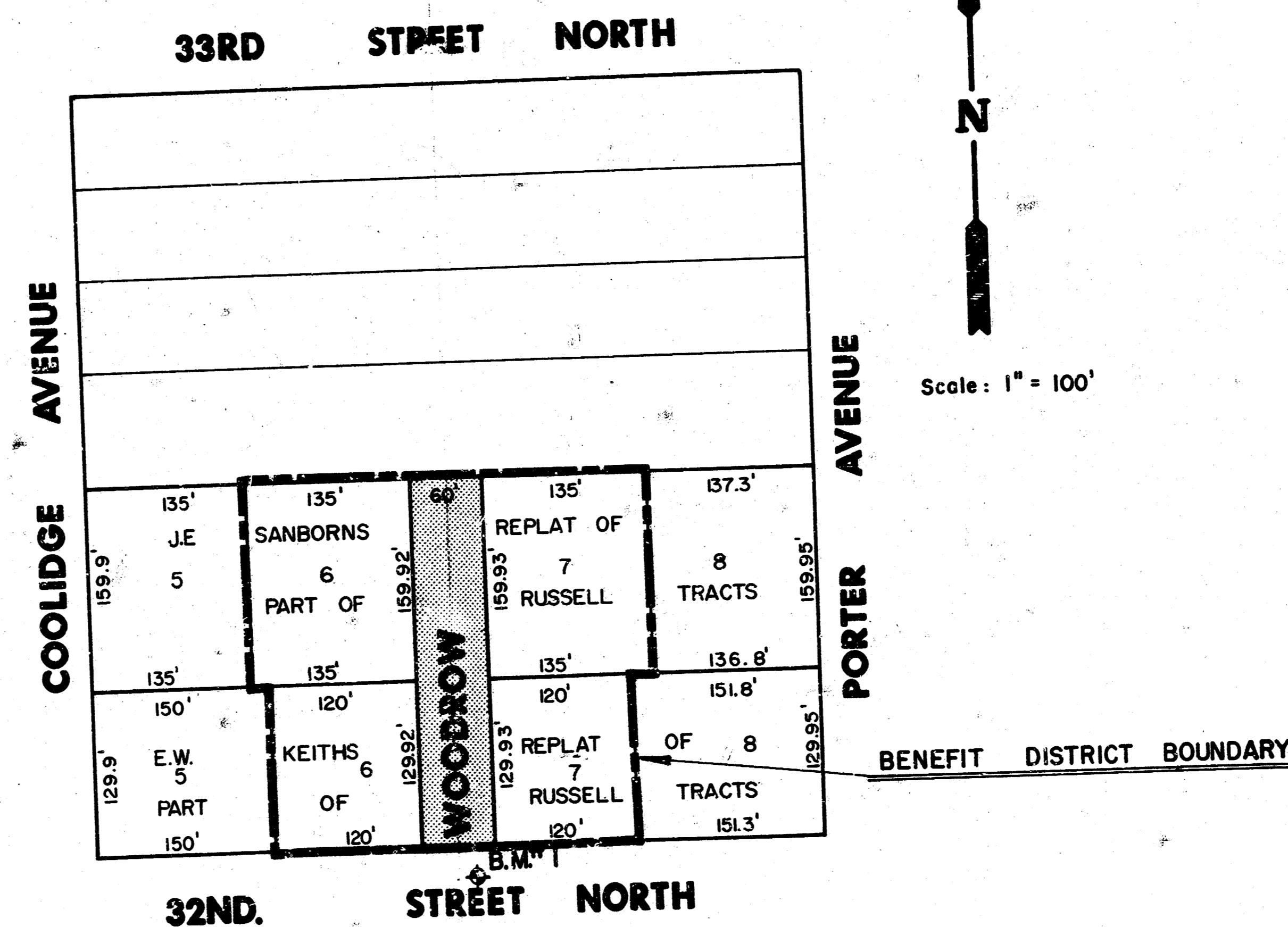
- Existing utilities and their location, as shown on the plans, represent the best information obtainable for design. The contractor will be required to work around existing utilities within the right-of-way which do not conflict with proposed construction.
- Rubble from the removal of miscellaneous structures and excess excavation which is to be wasted shall be disposed of on sites to be provided by the Contractor. These sites shall be approved by the Engineer as to suitability, appearance and site location. Locations that, in the opinion of the Engineer, will leave an unsightly appearance will not be approved.
- Mailboxes within the limits of the project shall be removed and replaced by the Contractor as approved by the Engineer. Contractor will be required to make satisfactory provisions for mail delivery to properties affected by this project during its construction.
- Trees and shrubs in public right-of-way which are indirect conflict with proposed new construction shall be removed by the Contractor with the Engineer's approval. Trees and shrubs which are not in direct conflict with proposed new construction shall be saved and protected from damage.
- Limits of earthwork shall match existing ground elevations at the right-of-way line unless otherwise noted on the plans with a new finished grade elevation. When a new finished grade elevation is shown, the earthwork shall extend one foot beyond the right-of-way line and then sloped up or down using permissible slopes to match the existing ground surface.
- All entrance and cross road pipe within the project limits shall be removed by the Contractor unless otherwise noted on the plans. Removal of such pipes shall conform to the applicable section of the Standard Specifications.
- Contractor shall give property owners abutting this project, whose yards will be lower than the new finished grade elevations at the right-of-way line, an opportunity to utilize excess excavated material from the project to regrade their yards to drain to the new pavement. Contractor will be required to dump and spread the excess material as required by the specifications when requested by the property owner. The Contractor shall ascertain that a dirt order form has been properly executed by the property owner before any such excess material is delivered to such properties.
- ~~The Contractor will be permitted to bid only one of the alternate types of subgrade treatment used to construct the project.~~
- The Contractor shall be responsible for preserving property irons. The Contractor will be required to re-establish any property irons which are damaged or destroyed by his construction operations. Such irons shall be re-established by licensed land surveyor or a licensed professional engineer in accordance with state laws.
- The Contractor shall give all property owners and/or tenants of developed property abutting the project limits a minimum of ten (10) days advance notice prior to start of construction.
- Utility service lines, poles, valve boxes, meters, and etcetera are to be adjusted as necessary by others prior to construction unless the plans specifically call for their adjustment by the contractor.

BENCH MARKS

B.M. # 1 Spike In North Face Of Telephone Pole, 25' South & 15' East Of $\frac{1}{2}$ Of 32nd Street North & Woodrow Avenue.
Elev. = 132.07

INDEX TO DRAWINGS

Sheet No.	Description
1	TITLE SHEET
2	PAVING DETAILS
3	WOODROW AVENUE
4	CROSS SECTIONS



WOODROW
PAVING PLANS

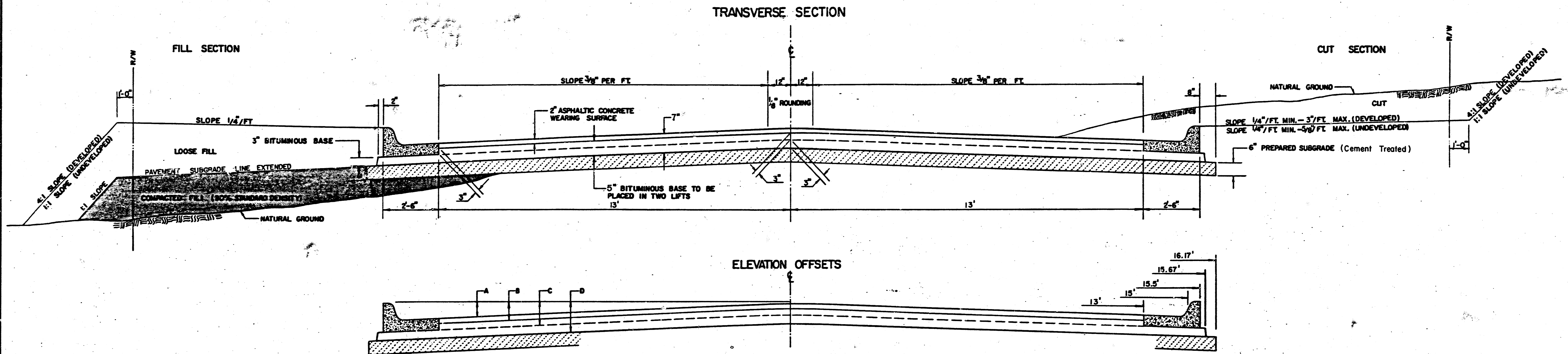
Design: K.H.B.
Drawn by: S.J.M.
Checked by: K.H.B.
Date: Dec., 1986
Scale: as shown

MID-KANSAS ENGINEERING CONSULTANTS PA
3500 NORTH ROEK ROAD
BUILDING #800
WICHITA, KANSAS 67226

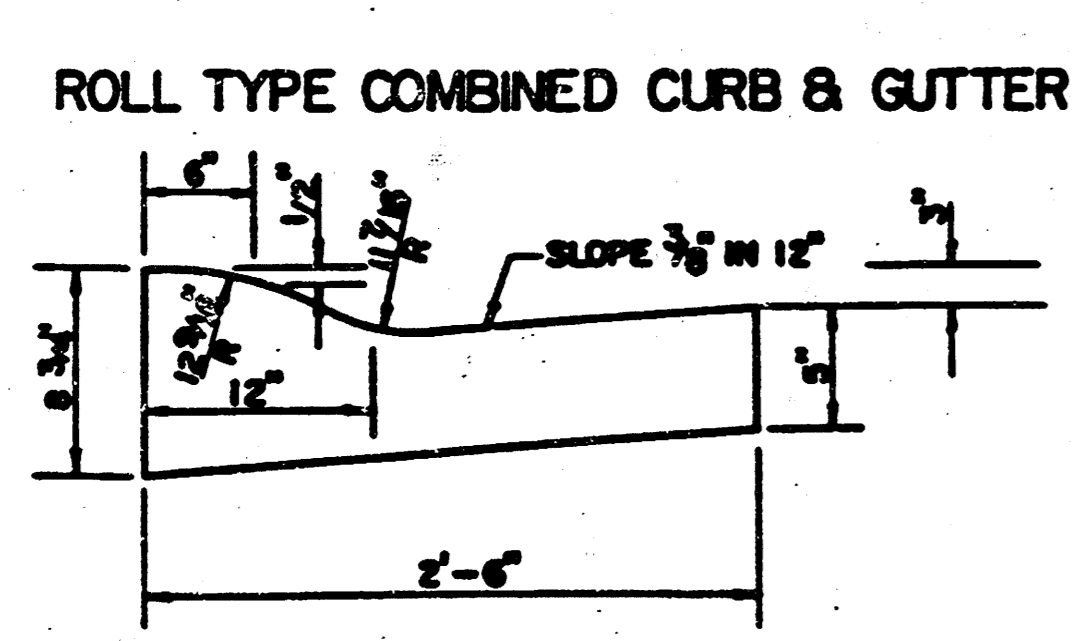
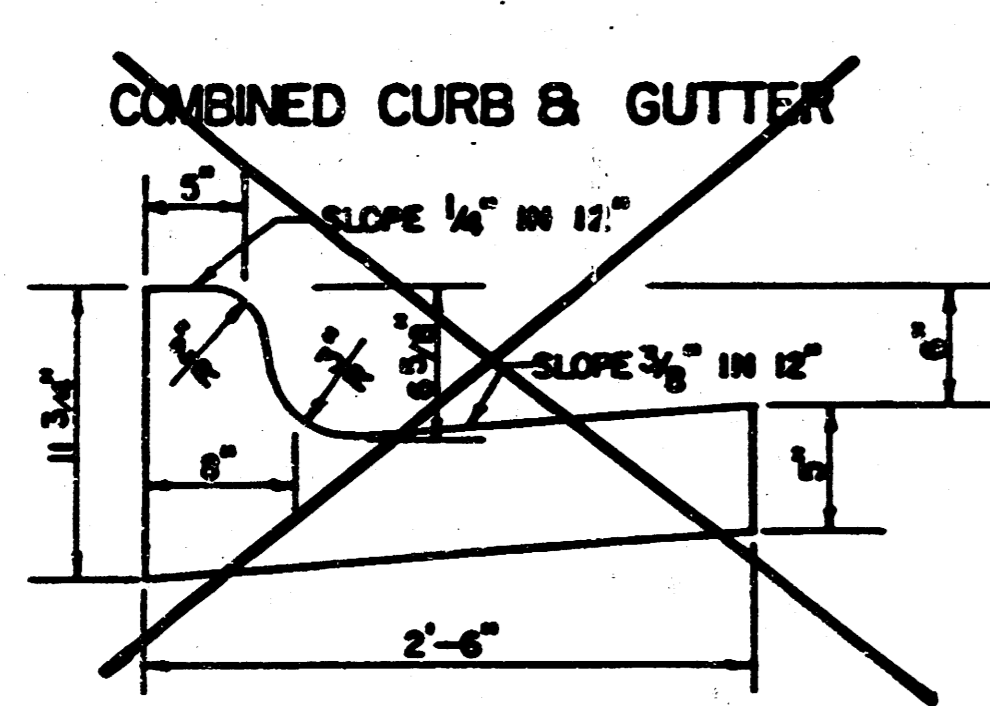
682-6561

Sheet 1
of 4

TYPICAL 31' PAVEMENT DETAILS



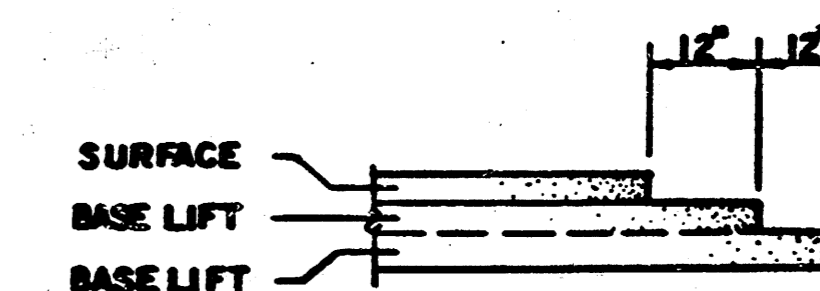
	DISTANCE FROM CENTERLINE (LI & RT)											
	0'	2'	4'	6'	7.5'	10'	12'	13'	15'	15.5'	15.67'	16.17'
A: TOP OF CURBS TO TOP OF SURFACE LIFT	.10	.14	.21	.27	.32	.39	.46	.49	---	---	---	---
B: TOP OF CURBS TO TOP OF UPPER BASE LIFT	.27	.31	.37	.44	.48	.56	.62	.65	---	---	---	---
C: TOP OF CURBS TO TOP OF LOWER BASE LIFT	.52	.56	.62	.69	.73	.81	.87	.90	.97	.98	.99	---
D: TOP OF CURBS TO TOP OF SUBGRADE	.77	.81	.87	.94	.98	1.03	1.10	1.15	1.22	1.23	1.24	1.25



GENERAL NOTES

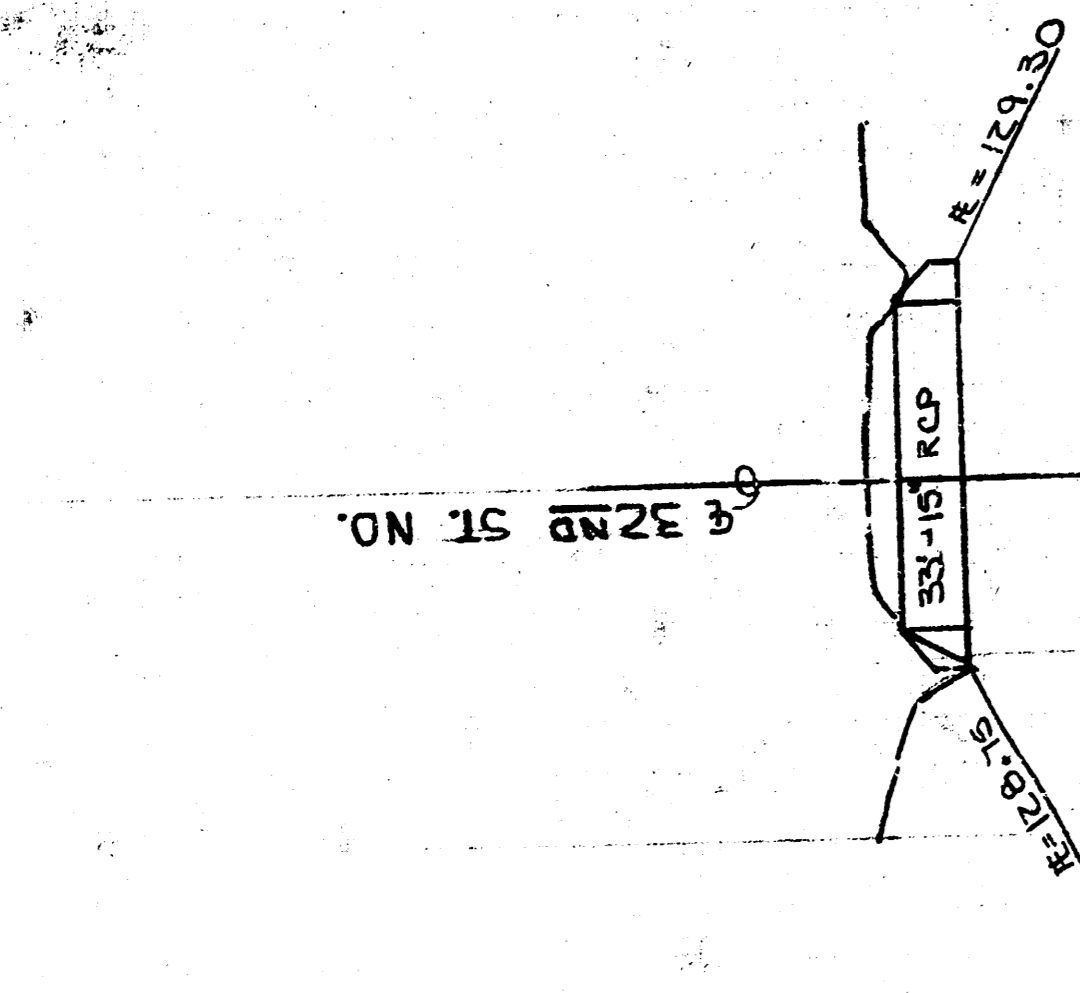
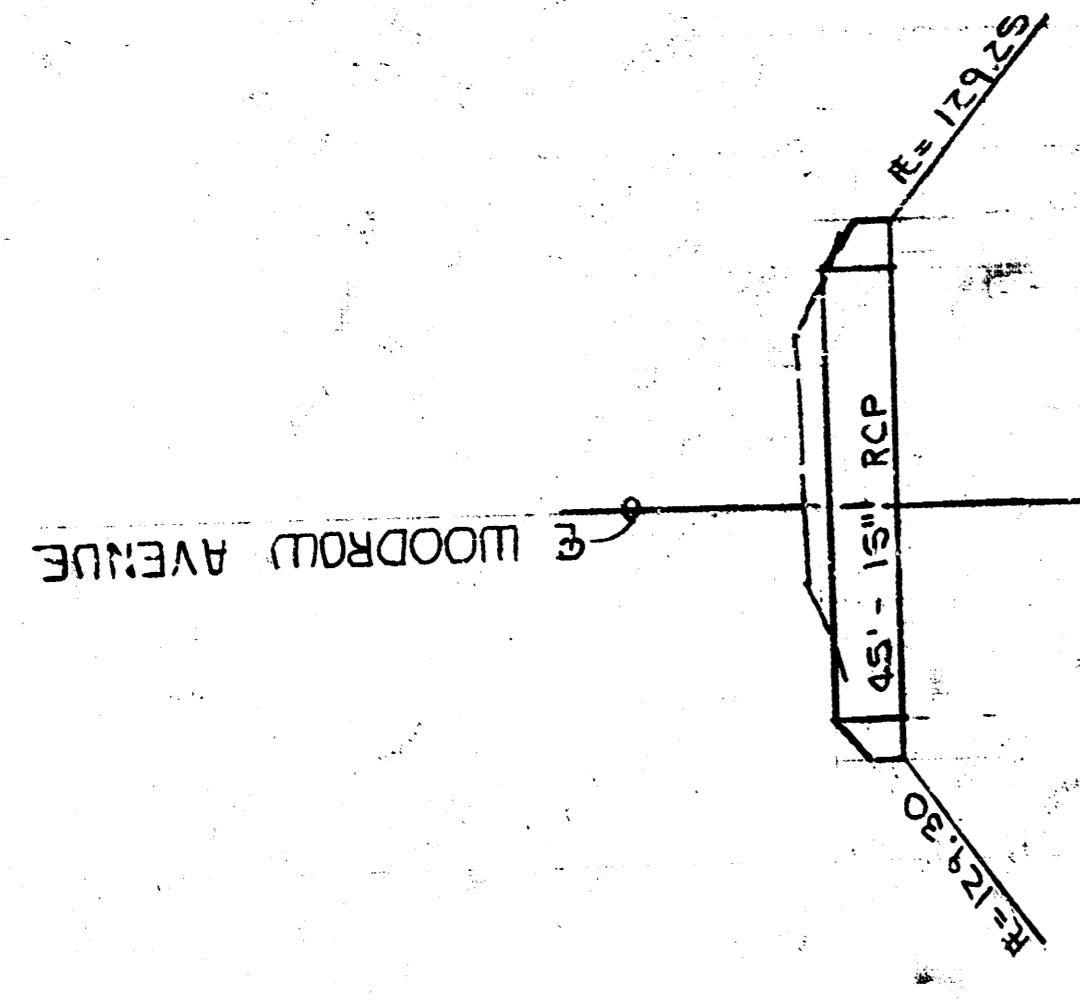
- 1) THE ASPHALTIC CONCRETE PAVEMENT BETWEEN THE COMBINED CURB AND GUTTER SHALL BE PAID AS SQUARE YARDS OF 7" ASPHALTIC CONCRETE (6" BITUMINOUS BASE).
- 2) THE BITUMINOUS BASE UNDER AND BEHIND THE COMBINED CURB AND GUTTER SHALL BE PAID AS SQUARE YARDS OF 3" BITUMINOUS BASE.
- 3) A TACK COAT OF EMULSIFIED ASPHALT (SC-1H OR CSS-1H) SHALL BE APPLIED AT AN APPROXIMATE RATE OF 0.05 GALLONS PER SQUARE YARD BETWEEN EACH LIFT OF ASPHALTIC MATERIAL.
- 4) BITUMINOUS BASE AND ASPHALTIC CONCRETE WEARING SURFACE SHALL BE PLACED WITH A LAYDOWN MACHINE HAVING AUTOMATIC CONTROLS FOR LINE AND GRADE.
- 5) CONSTRUCTION JOINTS 7'4" EACH LIFT SHALL BE STAGGERED A MINIMUM DISTANCE OF ONE (1) FOOT FROM JOINTS IN PRECEDING LIFTS AND PLACED SO THAT A JOINT WILL BE CONSTRUCTED ON THE CENTERLINE OF THE TOP LIFT.
- 6) CONTRACTOR TO BID ONLY ONE SUBGRADE TREATMENT ALTERNATE WHEN ALTERNATES ARE PROVIDED IN THE PROPOSAL AND CONTRACT. THE ALTERNATE CHOSEN BY THE SUCCESSFUL BIDDER SHALL BE USED IN CONSTRUCTING THIS PROJECT.

TRANSVERSE CONSTRUCTION JOINTS



TRANSVERSE CONSTRUCTION JOINTS SHALL BE CONSTRUCTED IN FLEXIBLE BASE PAVEMENTS AT LOCATIONS WHERE PAVEMENT JOINTS EXISTING FLEXIBLE BASE PAVEMENT AS SHOWN BY THE DETAIL. ALL COSTS ASSOCIATED WITH THE CONSTRUCTION OF THE TRANSVERSE JOINT SHALL BE INCLUDED IN THE BID PRICE FOR SQUARE YARDS 6" ASPHALTIC CONCRETE (6" BITUMINOUS BASE).

7 INCH RESIDENTIAL ASPHALTIC CONCRETE
PAVEMENT WITH 5 INCH BITUMINOUS BASE
CITY OF WICHITA, KANSAS
PROJECT NUMBER 2/4
72-76-245-81606-000-000-001



135
130
125

135
130
125

135
130
125

40 0 20 40

40 0 20 40

135
130
125
STA. 3+20

C = 20.4
LF = 13.6

Exc. = 41.8 cy
LF = 29.9 cy

135
130
125
STA. 3+00

C = 16.7
LF = 18.7

Exc. = 45.8 cy
LF = 39.5 cy

135
130
125
STA. 2+50

C = 32.8
LF = 24

Exc. = 86.9 cy
LF = 22.2 cy

135
130
125
STA. 2+00

C = 61.1

Exc. = 104.7 cy
LF = 2.4 cy

135
130
125
STA. 1+50

C = 52
LF = 26

Exc. = 93.9 cy
LF = 3 cy

135
130
125
STA. 1+00

C = 49.4
LF = 0.6

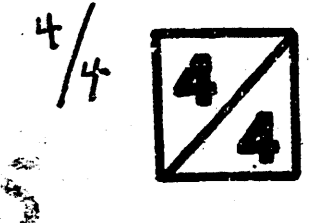
Exc. = 110.7 cy
LF = 0.8 cy
CF = 0.9 cy
MP = 3 cy

135
130
125
STA. 0+30

C = 36
CF = 0.7
MP = 2.3

WOODROW AVE.
PAVING CROSS SECTIONS
PROJ. NO. 472-76-245-81606-000-000-001

TOTAL Exc. = 483.8 cy
LF = 77.8 cy
CF = 0.9 cy
MP = 3 cy



50 45 40 35 30 25 20 15 10 5 0 5 10 15 20 25 30 35 40 45