

STREET IMPROVEMENTS FOR

THE PARK 4TH ADDITION

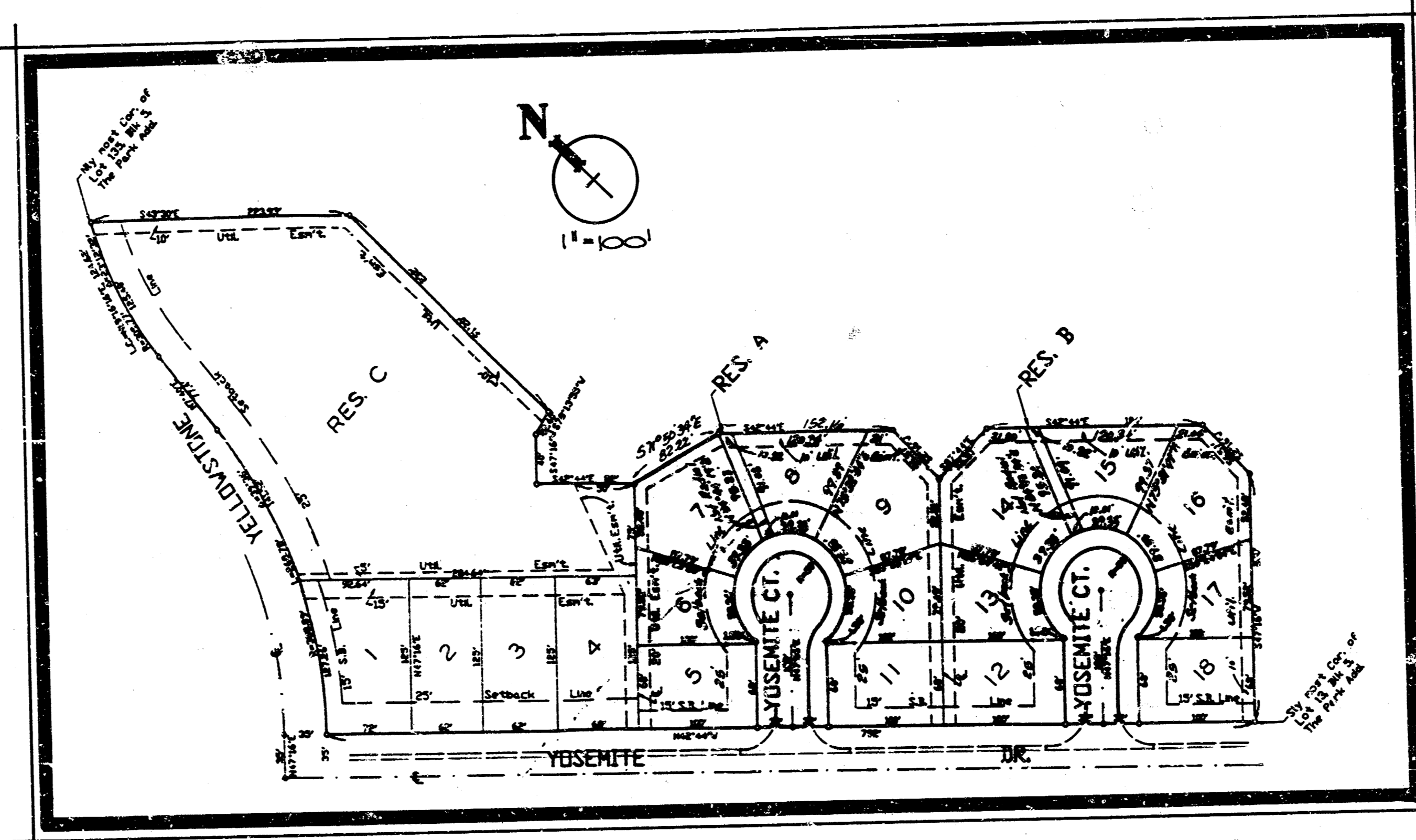
YOSEMITE COURT : FROM E.L. YOSEMITE DRIVE TO AND INCLUDING CUL DE SAC
(LOTS 6 thru 10, INCLUSIVE)

YOSEMITE COURT : FROM E.L. YOSEMITE DRIVE TO AND INCLUDING CUL DE SAC
(LOTS 13 thru 17, INCLUSIVE)

472-76-245-82033-000-000-001

GENERAL NOTES

- Utility service lines, poles, valve boxes, meters, and etcetera are to be adjusted as necessary by others prior to construction unless the plans specifically call for their adjustment by the Contractor or unless the plans specifically identify a utility to be adjusted by its owner during construction. Existing utilities and their location, as shown on the plans, represent the best information obtainable for design. The contractor will be required to work around existing utilities within the right-of-way which do not conflict with proposed construction.
- This project includes a certain amount of roll type curb construction. Roll Curbs shall be depressed through all driveway openings when such drives are constructed as a part of the project.
- No more than 2 drives 18 feet in width, or equivalent combinations thereof, are to be constructed with this project.
- Widened gutter section of combined curb and gutter at intersections will not be paid for directly, and this cost shall be considered as subsidiary to the other contract pay items of work.
- The Contractor shall be responsible for preserving property irons. The Contractor will be required to re-establish any property irons which are damaged or destroyed by his construction operations. Such irons shall be re-established by a licensed land surveyor in accordance with state laws.



BENCHMARKS

1. "0" OUT TOP CB, NWLY COR, LOT 6 THE PARK 4TH ADDN, (YOSEMITE DR.) ELEV. = 1321.30 C/D.
2. "0" OUT TOP CB, NWLY COR, LOT 12 THE PARK 4TH ADDN, (YOSEMITE DR.) ELEV. = 1321.15 C/D.
3. "0" OUT TOP CB, SWLY COR, LOT 15 THE PARK 4TH ADDN, (YOSEMITE DR.) ELEV. = 1321.94 C/D.

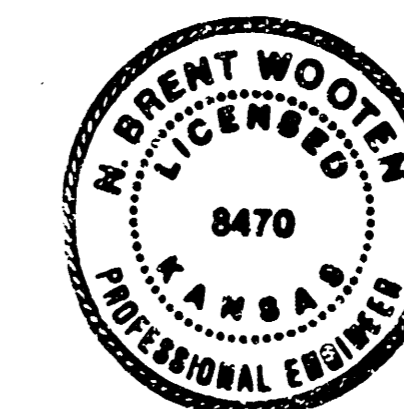
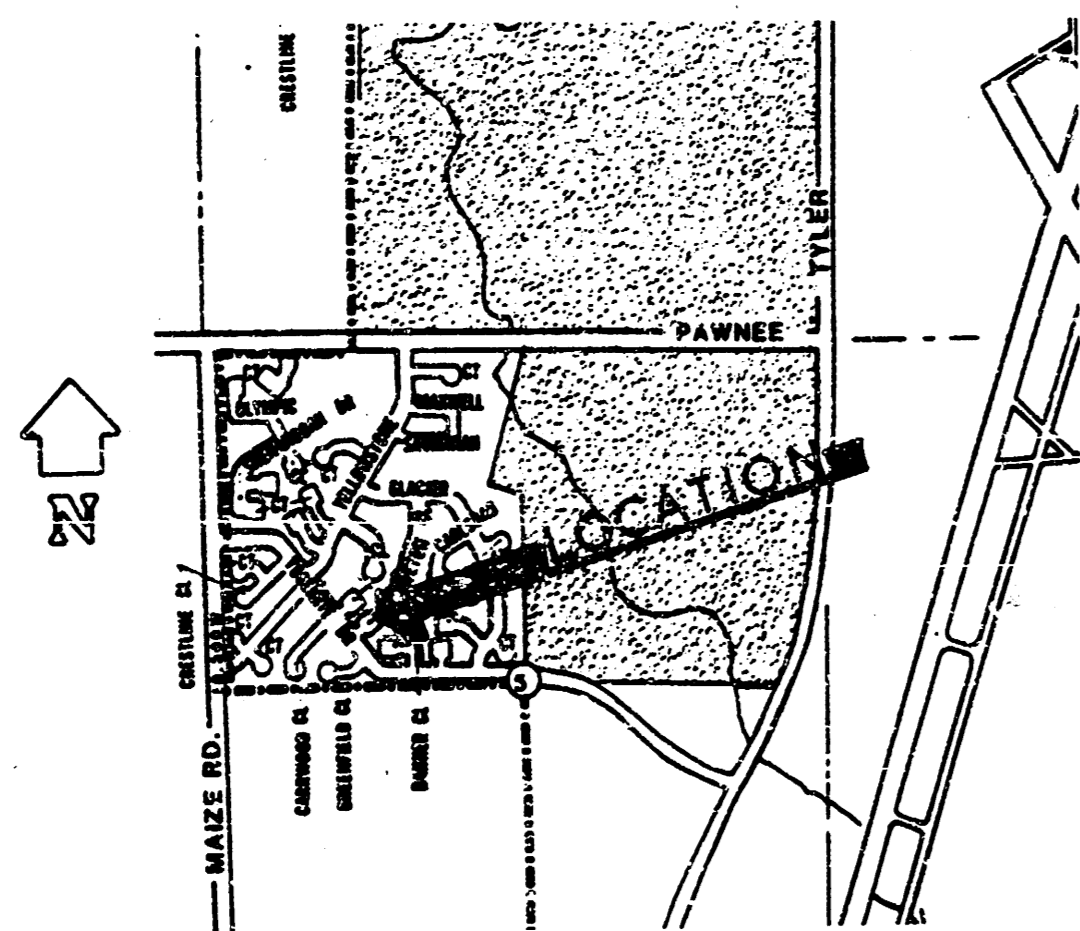
INDEX of SHEETS

TITLE SHEET 1
 PAVEMENT TYPICALS 2
 PLAN SHEETS 3-4
 EARTHWORK X-SECTIONS 5-6
 FINAL PLAT 7

BENEFIT DISTRICT

760645
INDEX CODE

CITY of WICHITA, KANSAS
MICHAEL E. LINDEBAK
CITY ENGINEER

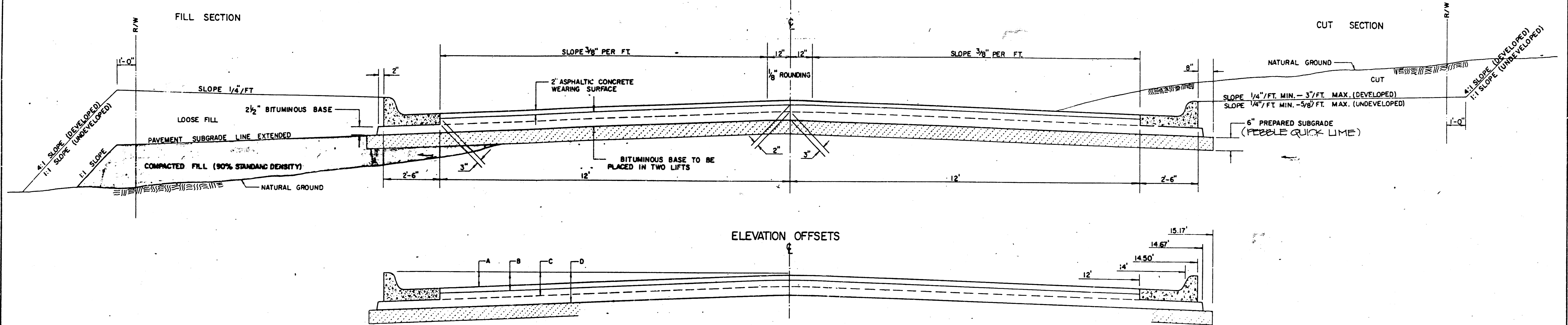


TITLE SHEET				
BAUGHMAN COMPANY, P.A. SURVEYING & ENGINEERING 316255-7271 • 315 ELLIS • WICHITA, KANSAS 67211				
Drawn: WOOTEN	Checked: SONNY	Approved: N/B/W	Date: MAY 02	Notes: NOTED
				1
				7

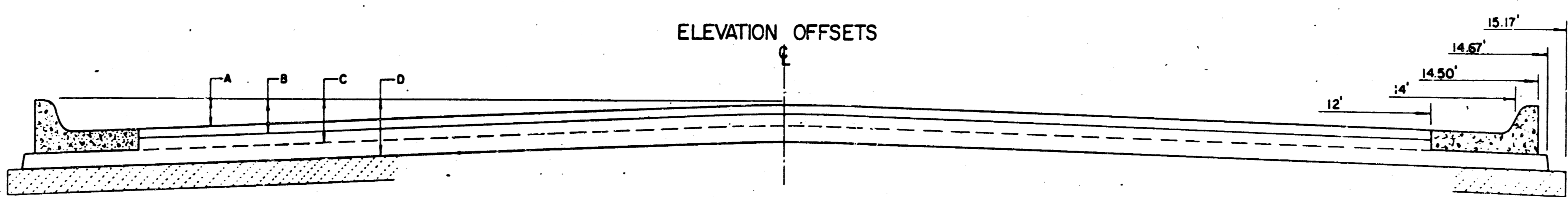
FILMED FROM THE BEST AVAILABLE COPY

TYPICAL 29' PAVEMENT DETAILS

TRANSVERSE SECTION

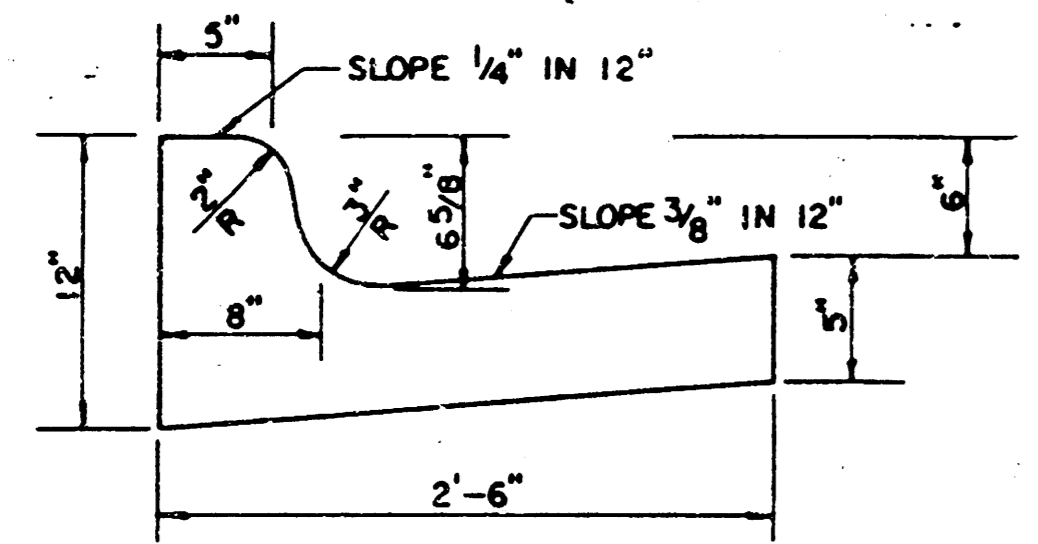


ELEVATION OFFSETS

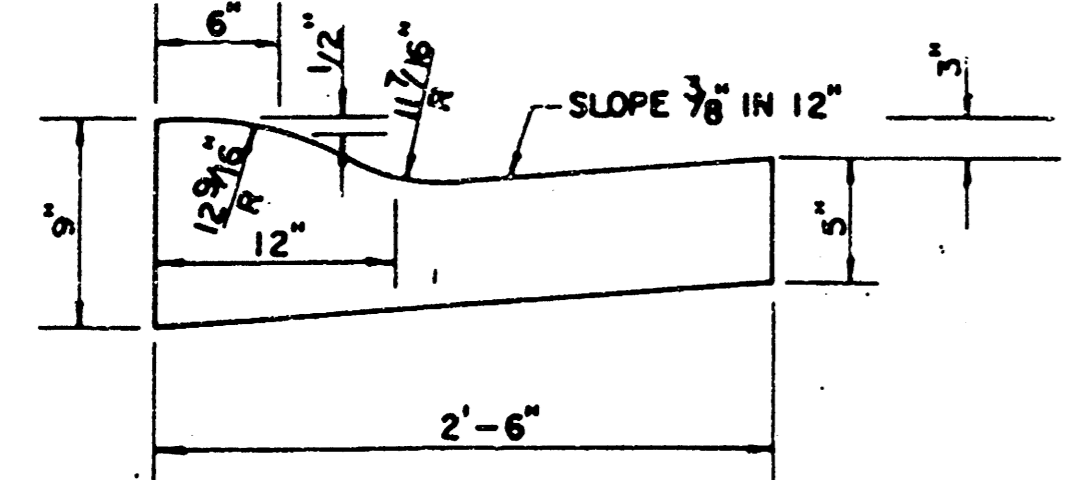


	DISTANCE FROM CENTERLINE (LT. & RT.)											
	0'	2'	4'	6'	7'	8'	10'	12'	14'	14.5'	14.67'	15.17'
A: TOP OF CURBS TO TOP OF SURFACE LIFT	0.13	0.18	0.24	0.30	0.33	0.36	0.43	0.49	—	—	—	—
B: TOP OF CURBS TO TOP OF UPPER BASE LIFT	0.30	0.35	0.41	0.47	0.50	0.53	0.60	0.66	—	—	—	—
C: TOP OF CURBS TO TOP OF LOWER BASE LIFT	0.47	0.52	0.60	0.68	0.71	0.75	0.83	0.90	0.98	1.00	1.01	—
D: TOP OF CURBS TO TOP OF SUBGRADE	0.72	0.77	0.84	0.91	0.94	0.98	1.05	1.12	1.19	1.21	1.21	1.23

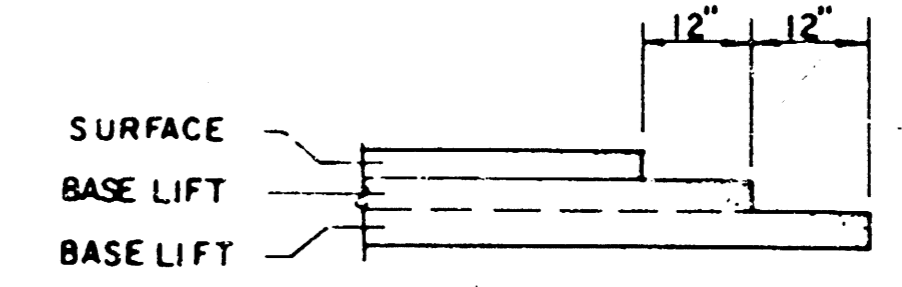
COMBINED CURB & GUTTER



ROLL TYPE COMBINED CURB & GUTTER



TRANSVERSE CONSTRUCTION JOINTS



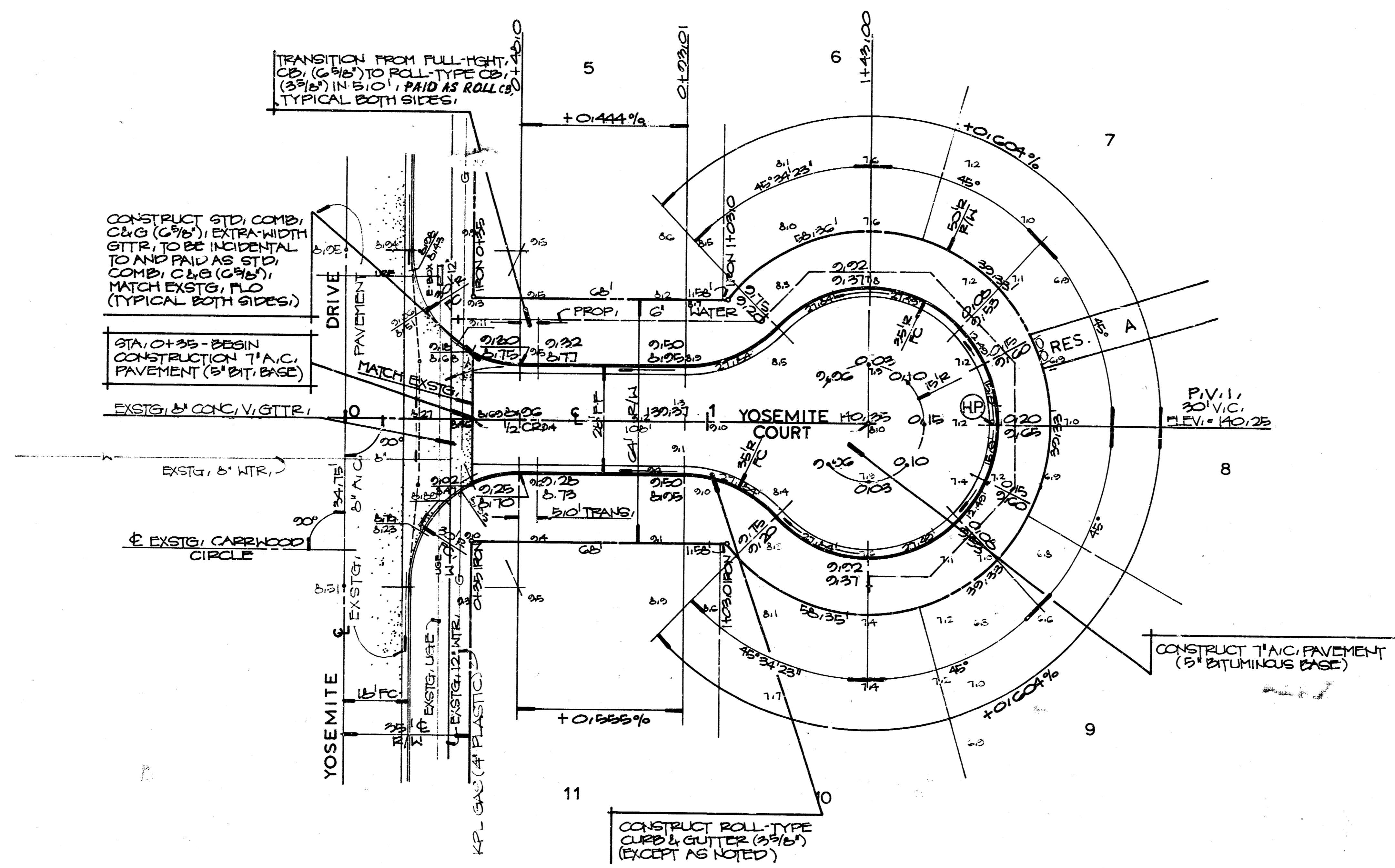
TRANSVERSE CONSTRUCTION JOINTS SHALL BE CONSTRUCTED IN FLEXIBLE BASE PAVEMENTS AT LOCATIONS WHERE PAVEMENT JOINS EXISTING FLEXIBLE BASE PAVEMENT AS SHOWN BY THE DETAIL. ALL COSTS ASSOCIATED WITH THE CONSTRUCTION OF THE TRANSVERSE JOINT SHALL BE INCLUDED IN THE BID PRICE FOR SQUARE YARDS 7" ASPHALTIC CONCRETE (5" BITUMINOUS BASE).

GENERAL NOTES

- 1) THE ASPHALTIC CONCRETE PAVEMENT BETWEEN THE COMBINED CURB AND GUTTER SHALL BE PAID AS SQUARE YARDS OF 7" ASPHALTIC CONCRETE (5" BITUMINOUS BASE).
- 2) THE BITUMINOUS BASE UNDER AND BEHIND THE COMBINED CURB AND GUTTER SHALL BE PAID AS SQUARE YARDS OF 2 1/2" BITUMINOUS BASE.
- 3) A TACK COAT OF EMULSIFIED ASPHALT (SC-1H OR CSS-1H) SHALL BE APPLIED AT AN APPROXIMATE RATE OF 0.05 GALLONS PER SQUARE YARD BETWEEN EACH LIFT OF ASPHALTIC MATERIAL.
- 4) BITUMINOUS BASE AND ASPHALTIC CONCRETE WEARING SURFACE SHALL BE PLACED WITH A LAYDOWN MACHINE HAVING AUTOMATIC CONTROLS FOR LINE AND GRADE.
- 5) CONSTRUCTION JOINTS IN EACH LIFT SHALL BE STAGGERED A MINIMUM DISTANCE OF ONE (1) FOOT FROM JOINTS IN PRECEDING LIFTS AND PLACED SO THAT A JOINT WILL BE CONSTRUCTED ON THE CENTERLINE OF THE TOP LIFT.
- 6) CONTRACTOR TO BID ONLY ONE SUBGRADE TREATMENT ALTERNATE WHEN ALTERNATES ARE PROVIDED IN THE PROPOSAL AND CONTRACT. THE ALTERNATE CHOSEN BY THE SUCCESSFUL BIDDER SHALL BE USED IN CONSTRUCTING THIS PROJECT.

7 INCH RESIDENTIAL ASPHALTIC CONCRETE PAVEMENT WITH 5 INCH BITUMINOUS BASE
 CITY OF WICHITA, KANSAS
 PROJECT NUMBER
 472 76 245 82033 000 000 001 2/7

FILMED FROM THE BEST AVAILABLE COPY



THE PARK 4TH ADDITION

EARTHWORK QUANTITIES

Excavation	664.2	cy.	Compacted Fill	178.9	cy.
• 10%	66.4		• 10%	17.9	
Total	730.6	cy.	Total	196.8	cy.
Subgrade Manipulation		1405	sq.		
Borrow Material		214	cy.		

- BENCH MARKS**
- 1' 0" OUT TOP CB, NW 1/4 COR, LOT 8 THE PARK 4TH ADDN, (YOSEMITE DR.) ELEV. = 1321.30 C/D
 - 2' 0" OUT TOP CB, NW 1/4 COR, LOT 12 THE PARK 4TH ADDN, (YOSEMITE DR.) ELEV. = 1321.15 C/D
 - 3' 0" OUT TOP CB, SW 1/4 COR, LOT 16 THE PARK 4TH ADDN, (YOSEMITE DR.) ELEV. = 1321.04 C/D

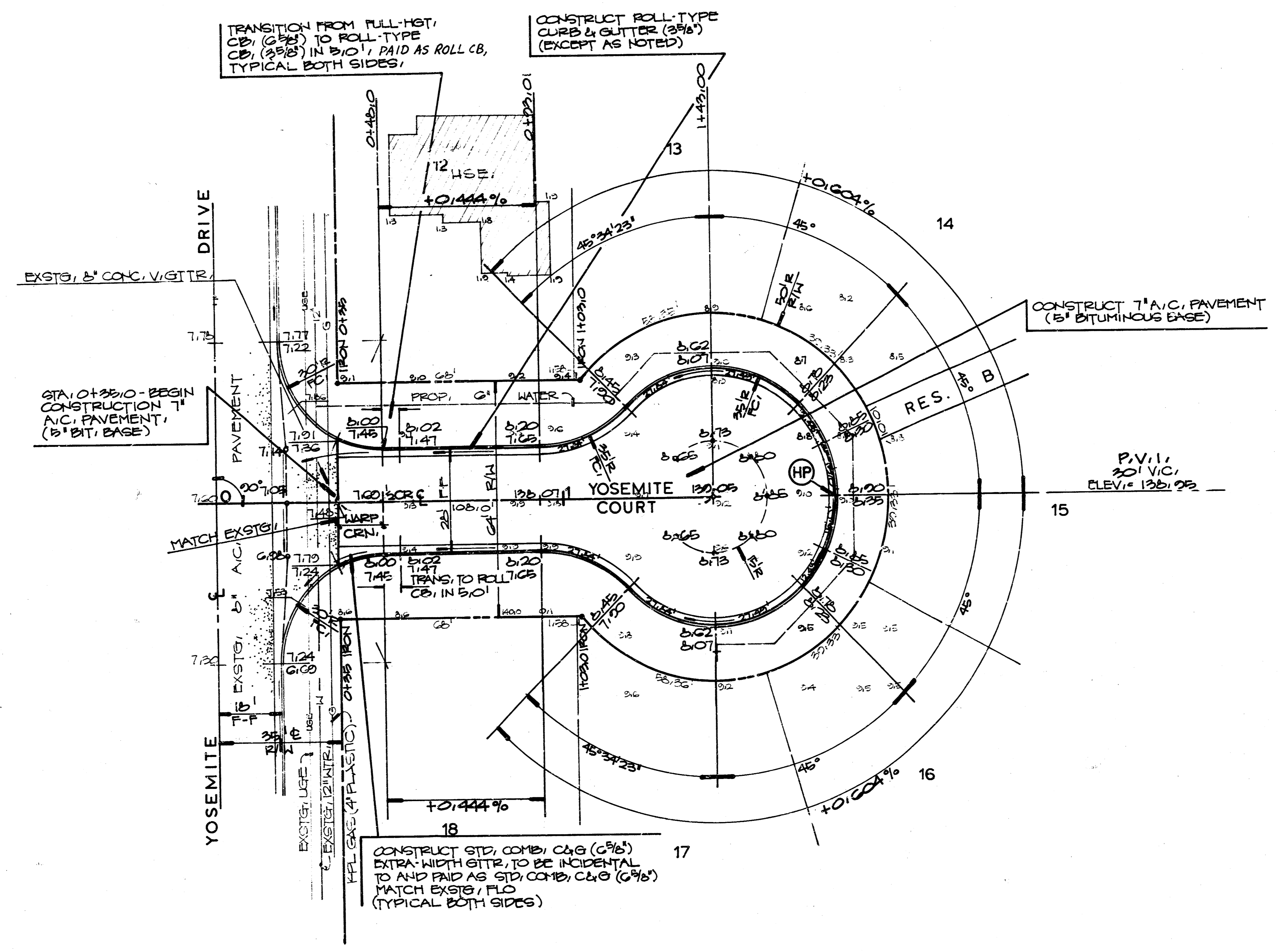
PROJ. NO. 472 76 245 82033 000 000 001

YOSEMITE COURT
FROM EL. YOSEMITE DR. TO & INCLUDING CUL-DE-SAC; LOTS 6-10, THE PARK 4th ADDN.

BAUGHMAN COMPANY, P.A.
SURVEYING & ENGINEERING
316 WEST 7271 • 315 ELLIS • WICHITA, KANSAS 67211

Drawn:	TCR	Checked:	SONNY N. B. W.	Date:	OCT. 00	Notes:	NOTED
Sheet:	3	of:	7				

FILMED FROM THE BEST AVAILABLE COPY.....



BENCH MARKS

- 1) 10' CUT TOP CURB, N.H.V. COR, LOT 5, THE PARK 4TH ADDN, (YOSEMITE DR.) ELEV. = 1321.30 C/D.
- 2) 10' CUT TOP CURB, N.H.V. COR, LOT 12, THE PARK 4TH ADDN, (YOSEMITE DR.) ELEV. = 1321.13 C/D.
- 3) 10' CUT TOP CURB, S.H.V. COR, LOT 15, THE PARK 4TH ADDN, (YOSEMITE DR.) ELEV. = 1321.24 C/D.

PROJ. NO. 472 76 245 82033 000 000 001

YOSEMITE COURT
FROM EL. YOSEMITE DR. TO & INCLUDING
CUL-DE-SAC; LOTS 13-17, THE PARK 4th ADDN.

BAUGHMAN COMPANY, P.A. SURVEYING & ENGINEERING <small>316268-7271 • 315 ELLIS • WICHITA, KANSAS 67211</small>				Sheet: 4
Design: TCR	Drawn: SONNY	Approved: N. B. W.	Date: OCT, 00	Scale: NOTED

FILMED FROM THE BEST AVAILABLE COPY

