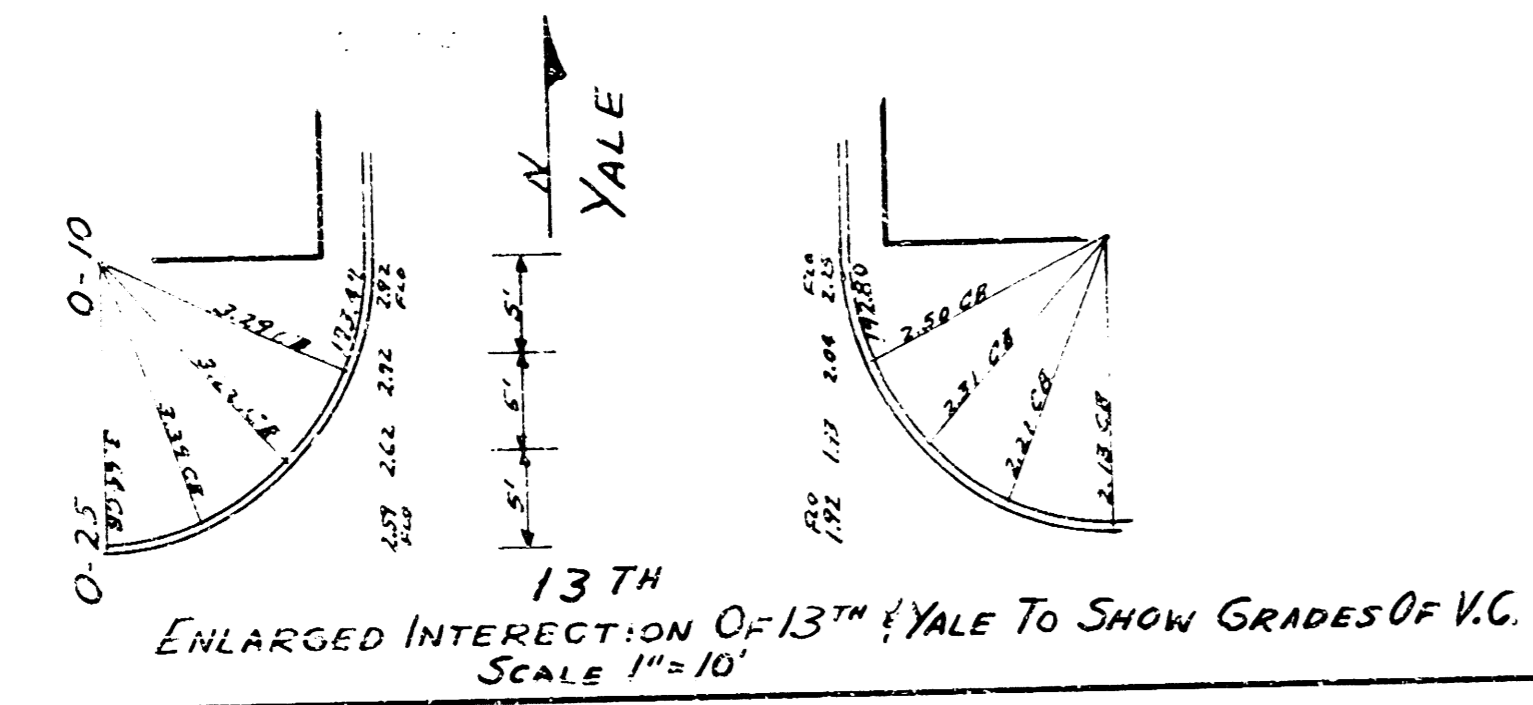
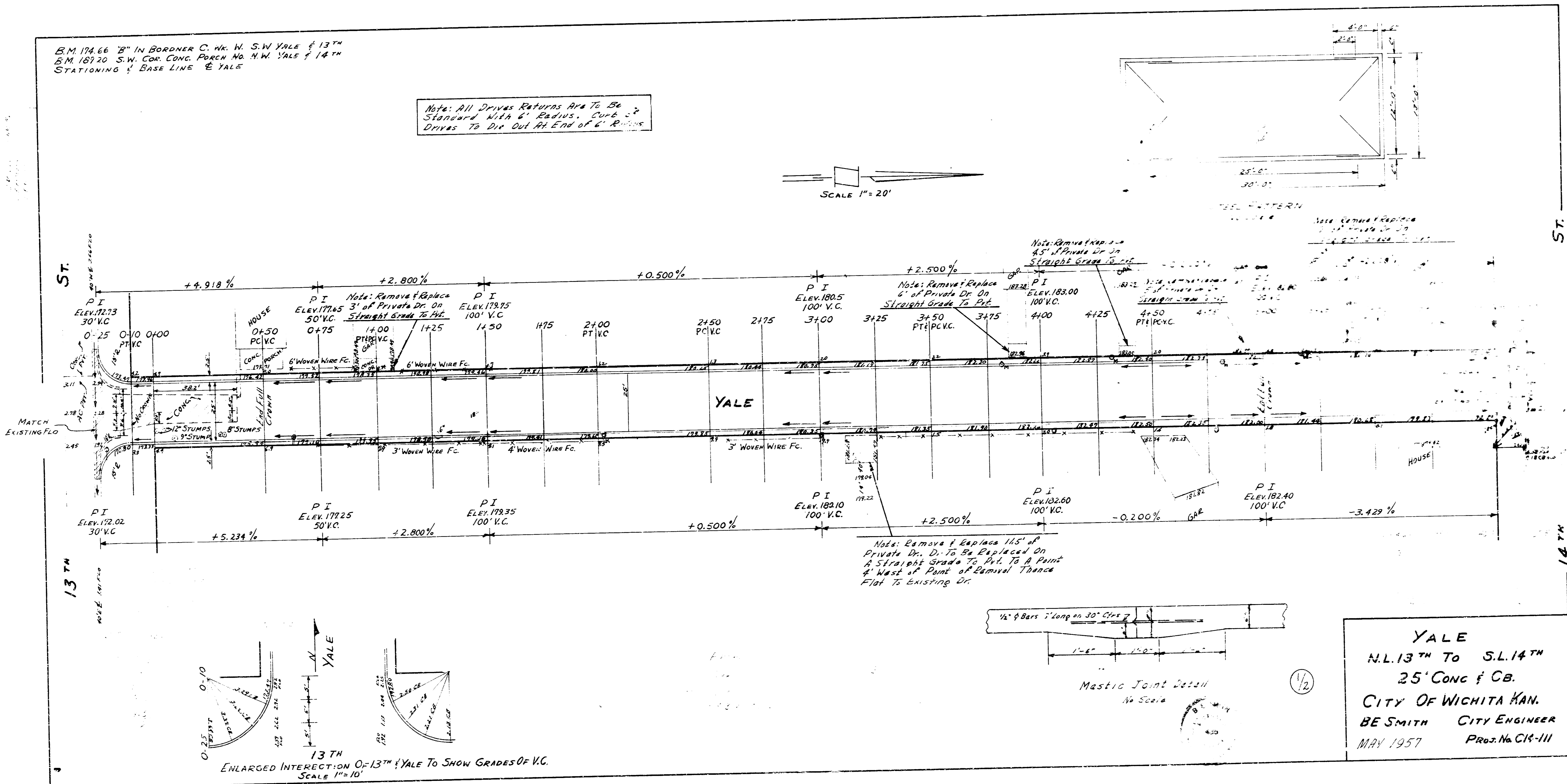
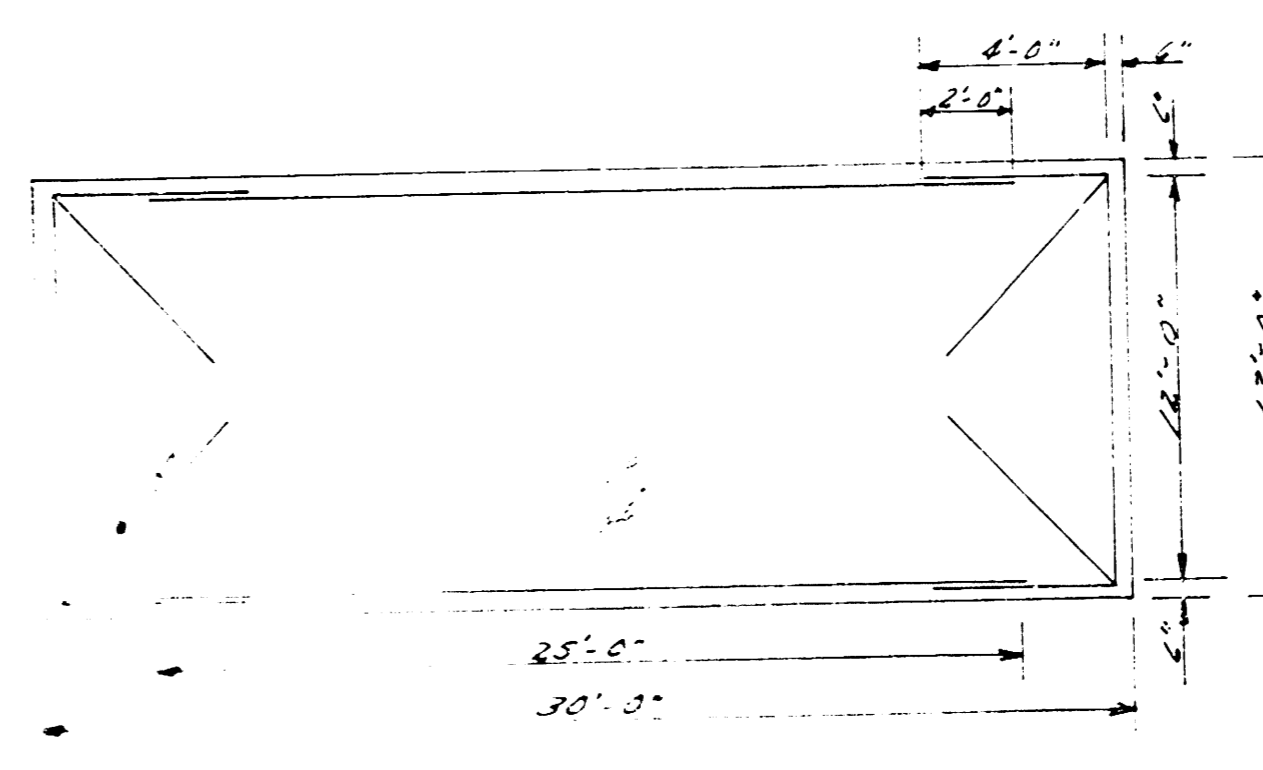
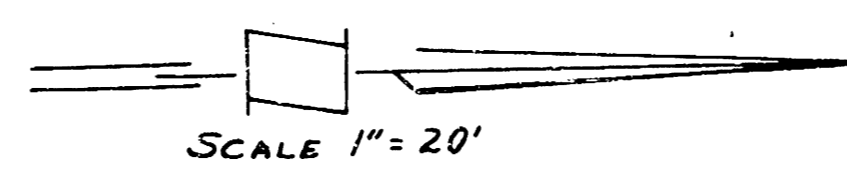


B.M. 174.66 "B" IN BORDNER C. W. N. S.W. YALE & 13TH
 B.M. 187.20 S.W. COR. CONC. POREN NO. N.W. YALE & 14TH
 STATIONING & BASE LINE @ YALE

Note: All Drives Returns Are To Be
 Standard With 6' Radius. Curve &
 Drives To Dig Out At End of 6' Radius



YALE
 N.L. 13TH TO S.L. 14TH
 25' CONC & CB.
 CITY OF WICHITA KAN.
 BE SMITH CITY ENGINEER
 MAY 1957 PROJ. NO. C18-111