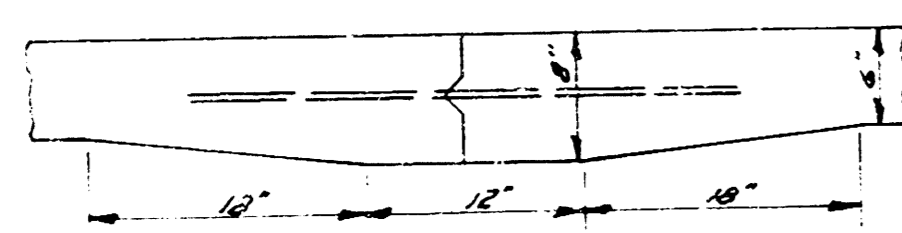
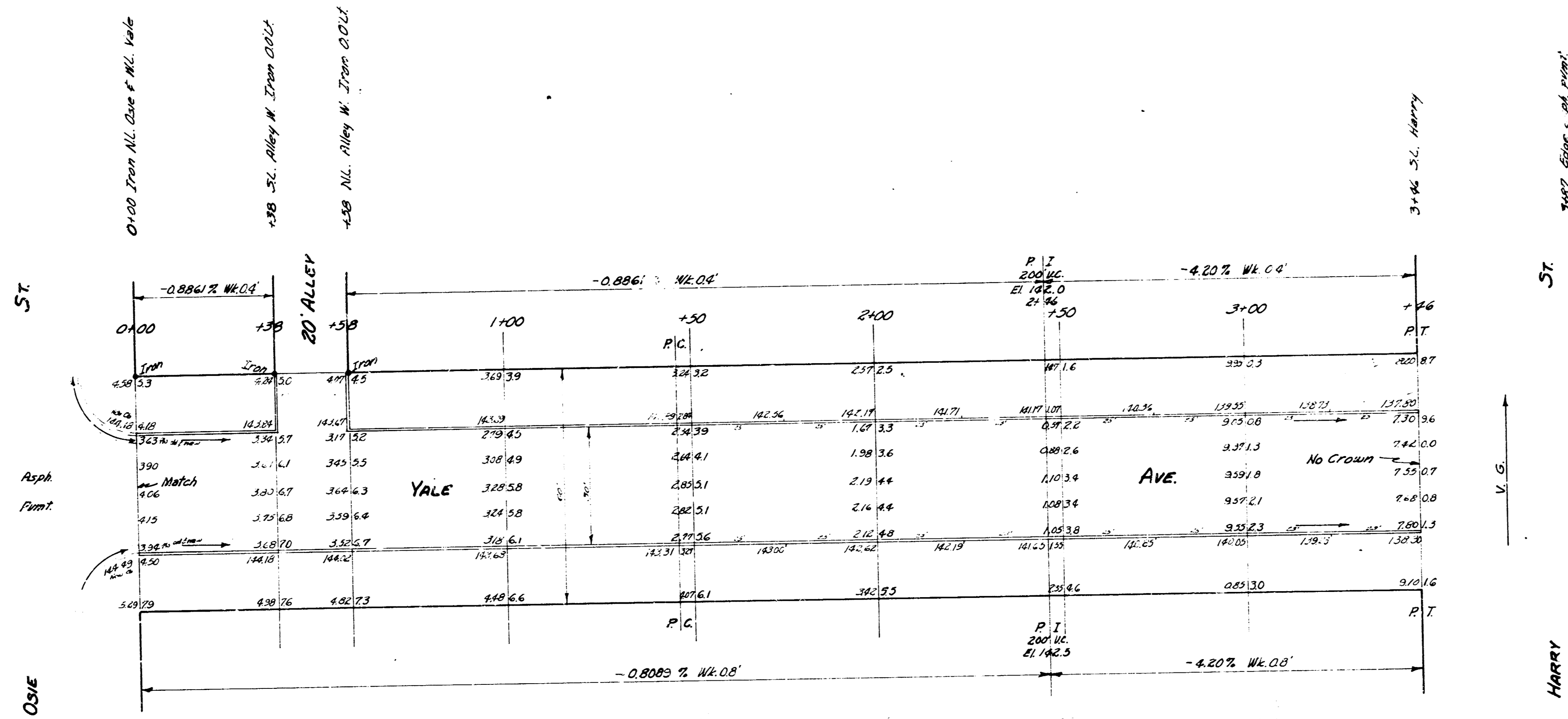
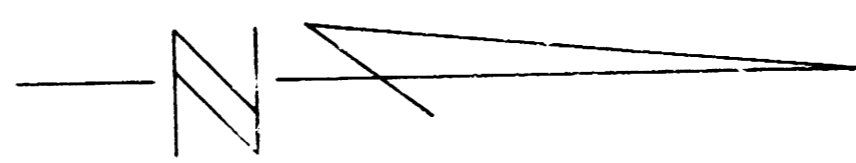


B.M. 144.19 "2" in Ritchie N end rad., W side Yale, N.L. Osie
 B.M. 140.24 N.W. cor. porch, Ho # 1724 S Clinton
 Stationing on W.R.



Use 1/2" # 8 Bars, 3' long, on 2'-6" CTRs.

Mastic Joint Detail

YALE
 N.L. OSIE TO S.L. HARRY
 30' CONC. & CB.
 CITY OF WICHITA KANSAS
 B.E. SMITH CITY ENGINEER
 APRIL 1955 PROJ. NO. C-1-6

