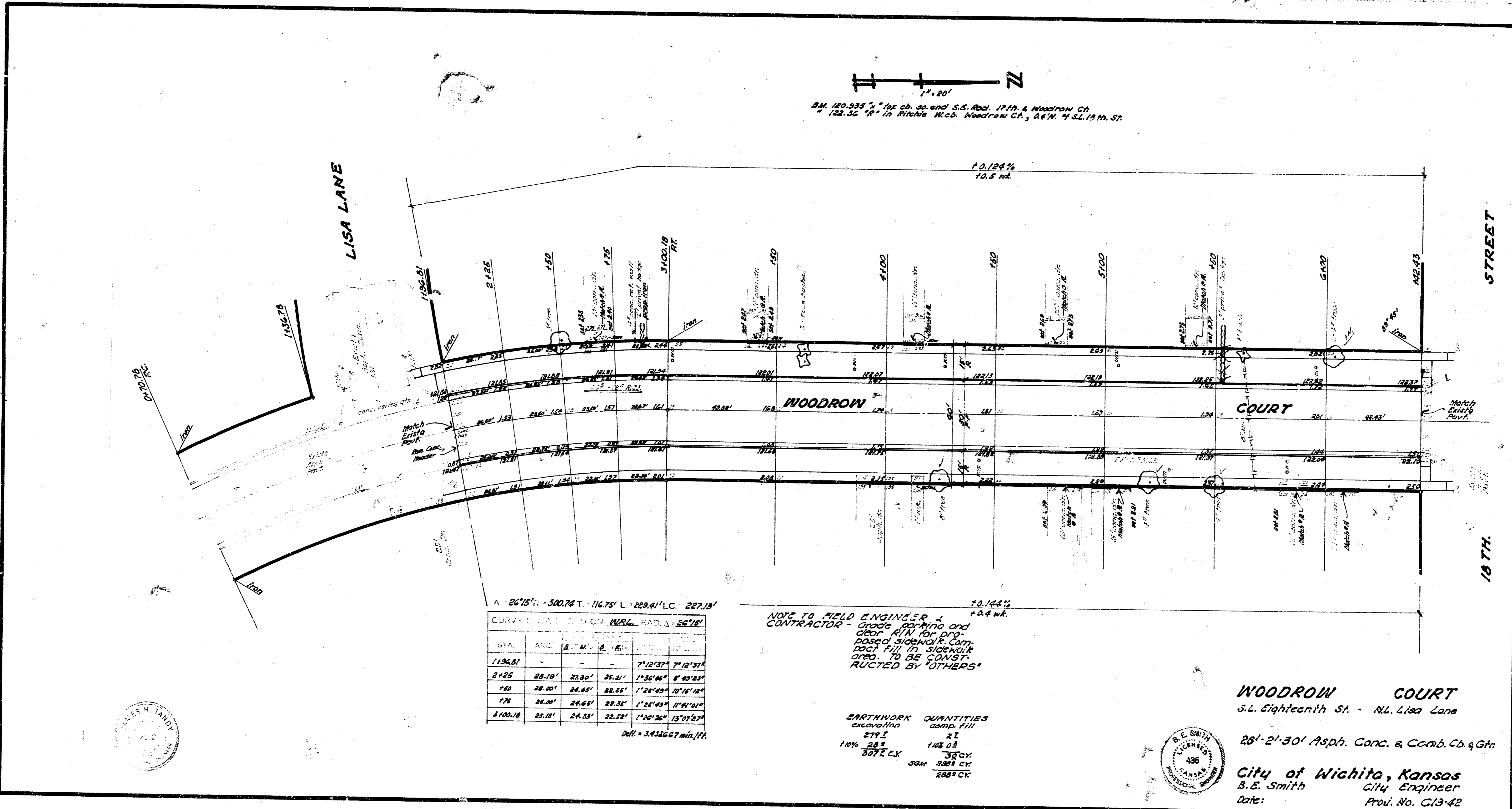


RM. 120-335' ± for ch. 20. and S.S. Rod. 17th. & Woodrow Ct.
 122.36' ± in Riteing W.C. Woodrow Ct., R.F.N. 4 S.L. 18th St.



Δ = 26.75' T = 500.74' L = 116.75' L.C. = 227.13'

STA	ANG	Δ	T	L	L.C.
1+00.00					
2+25	88.18°	27.80'	25.21'	1°12'37"	7°12'31"
1+0	26.00°	24.65'	22.55'	1°26'40"	10°18'18"
1+25	26.00°	24.65'	22.55'	1°26'40"	10°18'18"
3+00.18	25.18°	24.33'	22.12'	1°20'36"	13°07'27"

DEL. = 3.432667 min./ft.

NOTE TO FIELD ENGINEER & CONTRACTOR - Grade parking and clear 4' W for proposed sidewalk. Comp. rock fill in sidewalk area. TO BE CONSTRUCTED BY OTHERS.

EARTHWORK QUANTITIES
 conc. fill 21
 279.2 143.03
 10% 28% 32 CY
 304 289 CY
 289 CY

WOODROW COURT
 S.E. Eighteenth St. - N.E. Lisa Lane

26'-21'-30" Asph. Conc. & Comb. Cb. 9 Gr.

City of Wichita, Kansas
 B. S. Smith City Engineer
 Date: Proj. No. C13-42



SIGNED: P. 1003 ARS
 Plan
 Sec
 Div
 Date