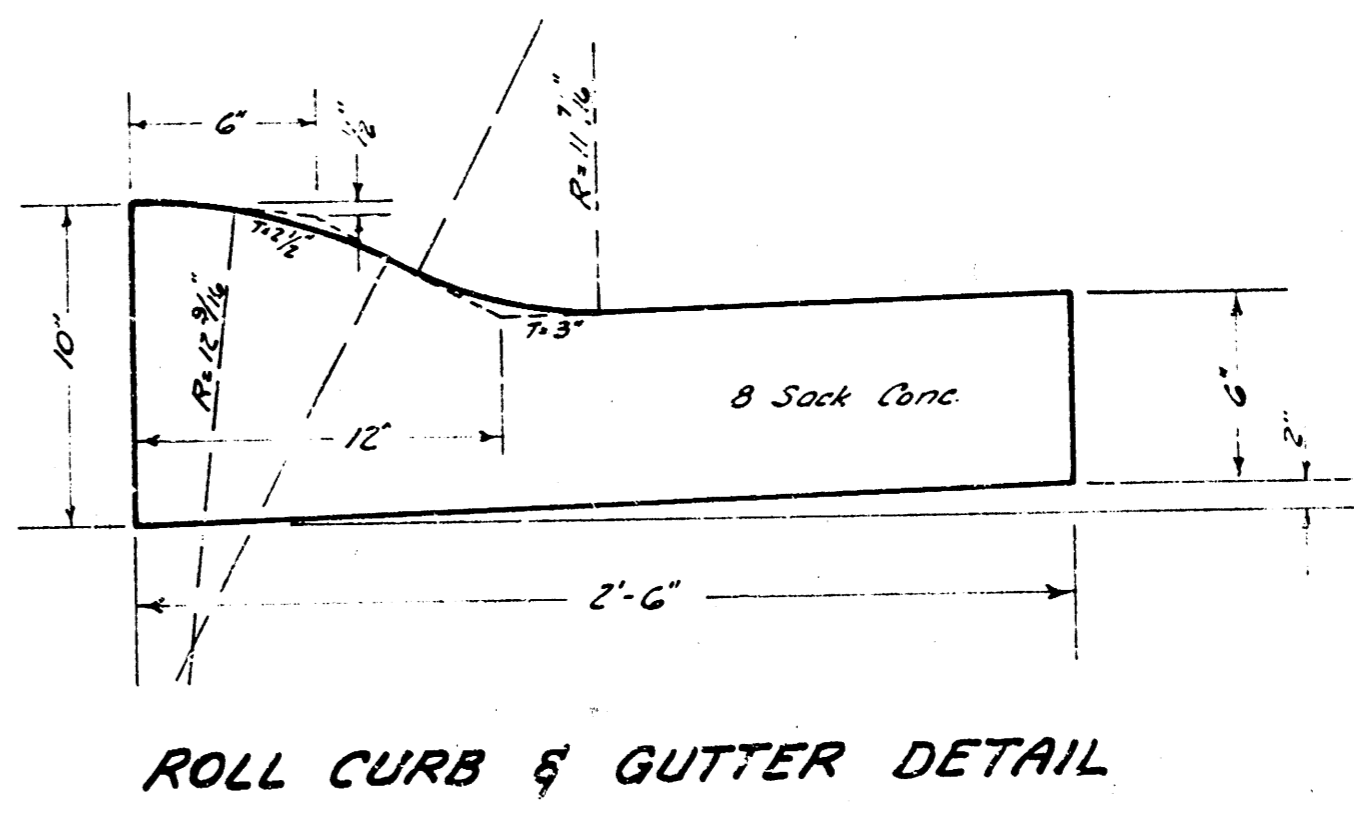
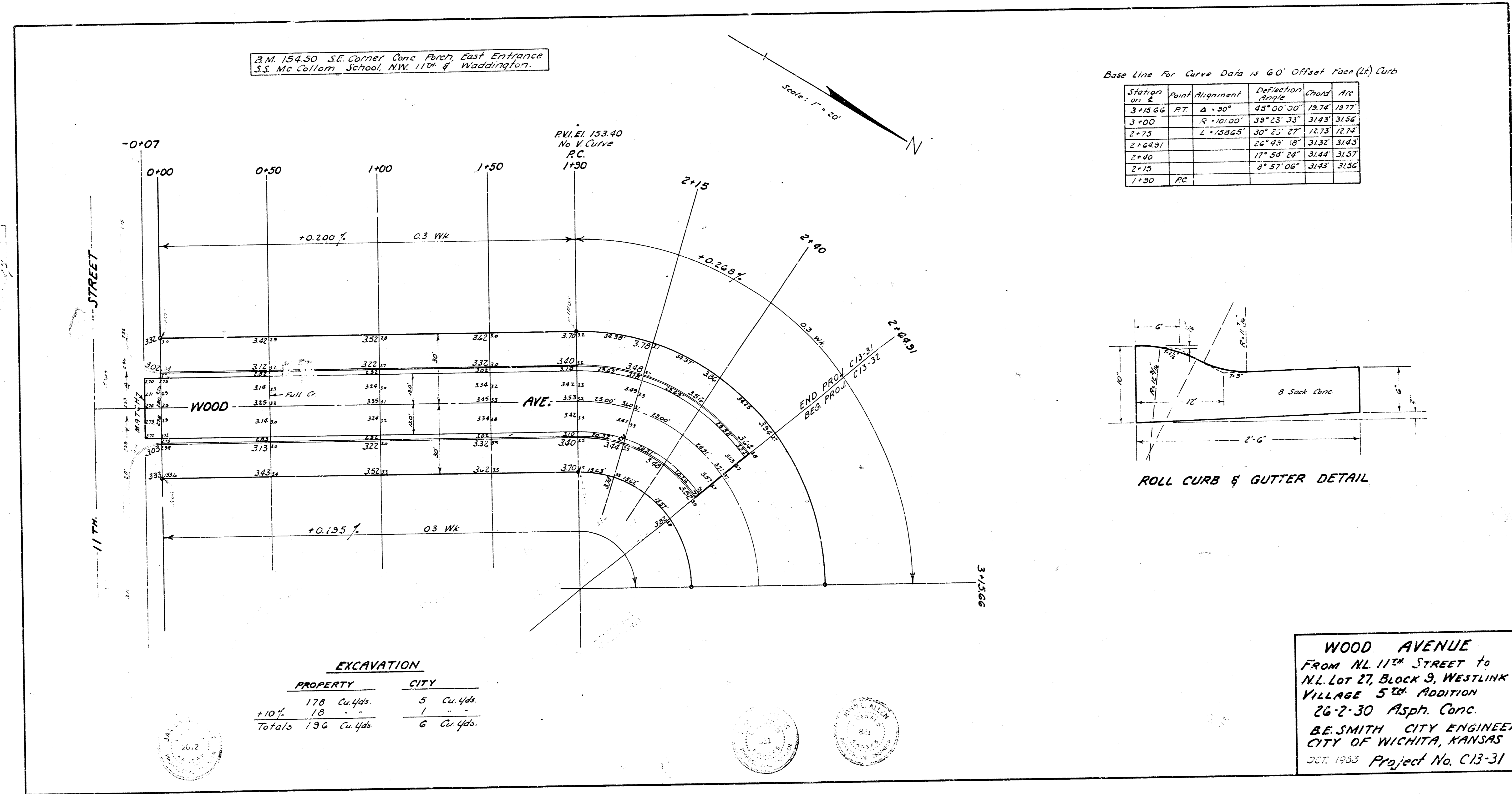


B.M. 154.50 S.E. Corner Conc. Paved East Entrance  
S.S. Mc Collum School, NW 11th & Waddington.

Scale: 1" = 50'

Base Line for Curve Data is 60' Offset Face (L) Curb

Station on E	Point	Alignment	Deflection Angle	Chord	Arc
3+15.66	PT	$\Delta = 50^\circ$	$45^\circ 00' 00''$	19.74	19.77
3+00		R = 10' 00"	$38^\circ 23' 33''$	3.143	3.154
2+75		L = 158.65'	$30^\circ 23' 27''$	12.73	12.74
2+49.91			$26^\circ 49' 18''$	3.132	3.145
2+40			$17^\circ 54' 24''$	3.144	3.157
2+15			$8^\circ 57' 08''$	3.143	3.156
1+30	PC				



**EXCAVATION**

PROPERTY	CITY
170 Cu. Yds.	5 Cu. Yds.
+10% 18	1
<b>Totals 196 Cu. Yds.</b>	<b>6 Cu. Yds.</b>

**WOOD AVENUE**  
FROM N.L. 11TH STREET TO  
N.L. LOT 27, BLOCK 9, WESTLINK  
VILLAGE 5TH ADDITION  
26-2-30 Asph. Conc.  
B.E. SMITH CITY ENGINEER  
CITY OF WICHITA, KANSAS  
JULY 1933 Project No. C13-31

