

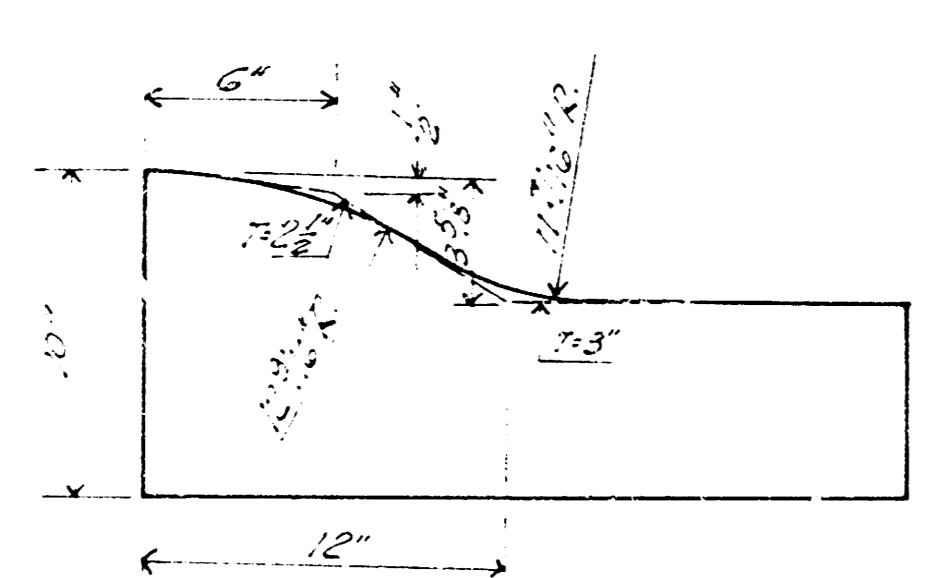
C. S. Smith
 City Engineer



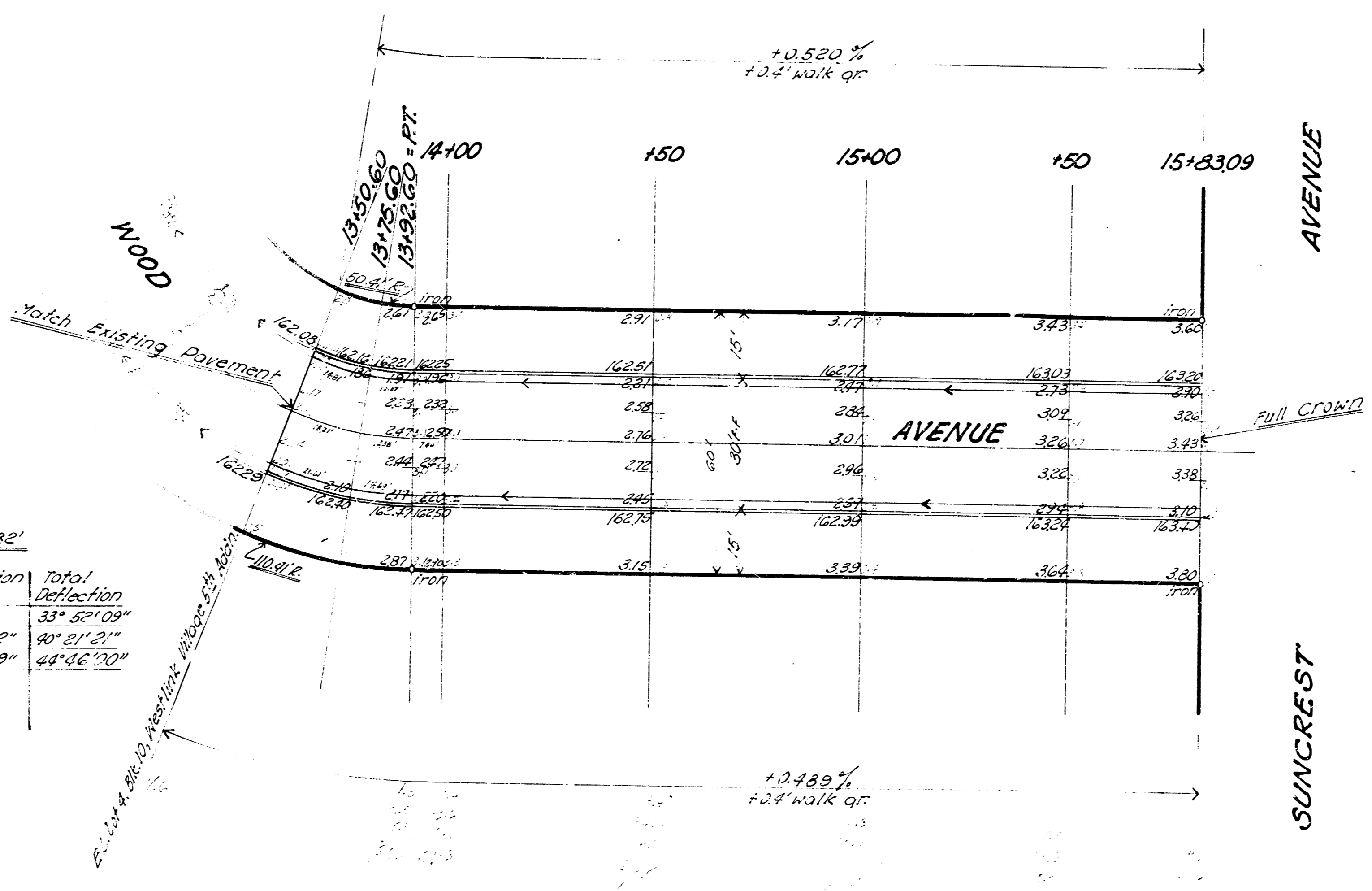
B.M. 154.50 S.E. Cor. Care. Park, East Entrance, to side McCullum School NW 11th St. & Woodington.
 B.M. 147.725 R.2. Spike W. side of Park on NW Cor. Suncrest & Tyler Road
 Stationed on East and South Prop. Lines

Curve Data Based On South R. Road = 110.41' $\Delta = 39^{\circ}32'$

Station	Arc Length	Chord Length @ 0' to Curb	Chord Length @ 8' to Curb	Deflection	Total Deflection
13450.2	25'	12.97'	23.86'	6' 29" 12"	33' 52" 09"
13475.2	17'	8.83'	15.91'	4' 24" 39"	44' 56" 00"



DETAIL OF ROLL TYPE COMB CURB & GUTTER



Earthwork Quantities
 Exp. = 350.0
 1.35% (4.0%)
 363.9 cu.

WOOD AVENUE
 24 Lot 4, Blk. E. to 32 Suncrest Avenue
 Westlink Village 5th. Av. W. 1/2
 26'-2" 30' Asphaltic Conc. Pavement
 City of Wichita, Kansas
 B.E. Smith ——— City Engineer
 Date: JUNE 1937. Proj. No. 513-47